

Synergy Resources

Well Name: **SRC Kelly Farms 22-4-3NHZ #2**

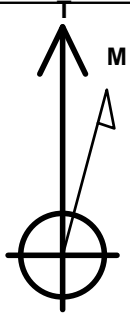
Surface Location: SRC Kelly Farms Pad Sec.4-T5N-R66W
North American Datum 1983 , US State Plane 1983 , Colorado Northern Zone

Ground Elevation: 4754.0

+N/-S	+E/-W	Northing	Easting	Latitude	Longitude	Slot
0.0	0.0	1400825.37	3199117.44	40.431463	-104.784723	
Original Well Elev WELL @ 4767.0ft (Original Well Elev)						

WELLBORE TARGET DETAILS

Name	TVD	+N/-S	+E/-W	Shape
SHL 2152'FNL & 2337'FWL, Sec. 4	1.0	0.0	0.0	Point
BHL 2510'FNL & 2109'FWL, Sec. 3	7057.0	-355.8	5100.2	Point



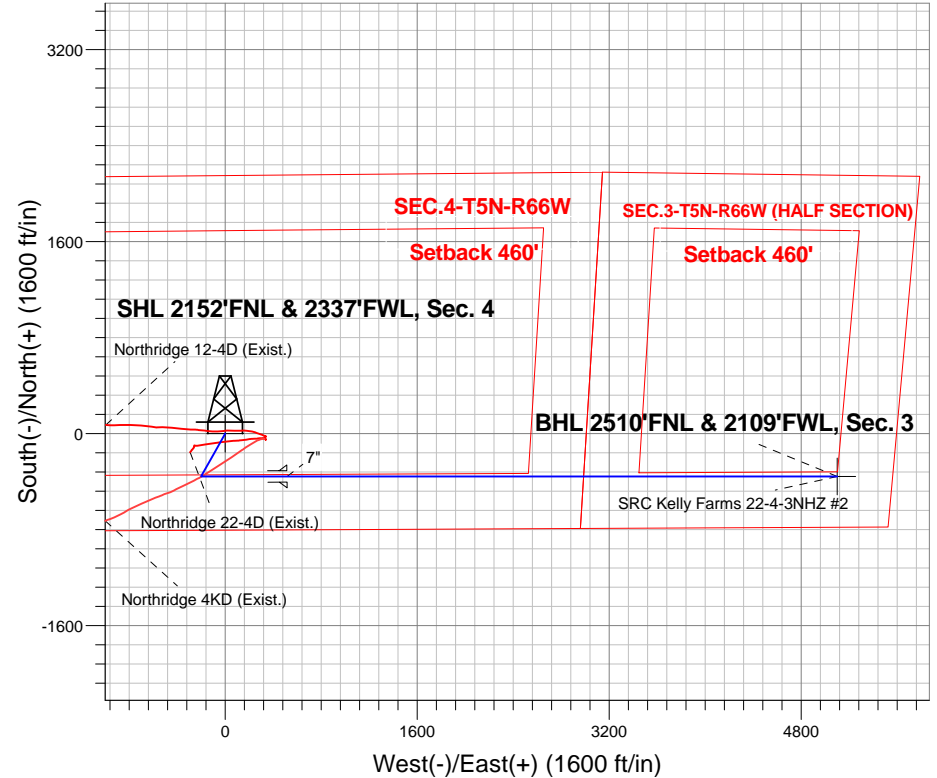
Azimuths to True North
Magnetic North: 8.62°

Magnetic Field
Strength: 52943.0srT
Dip Angle: 67.01°
Date: 5/20/2013
Model: IGRF2010

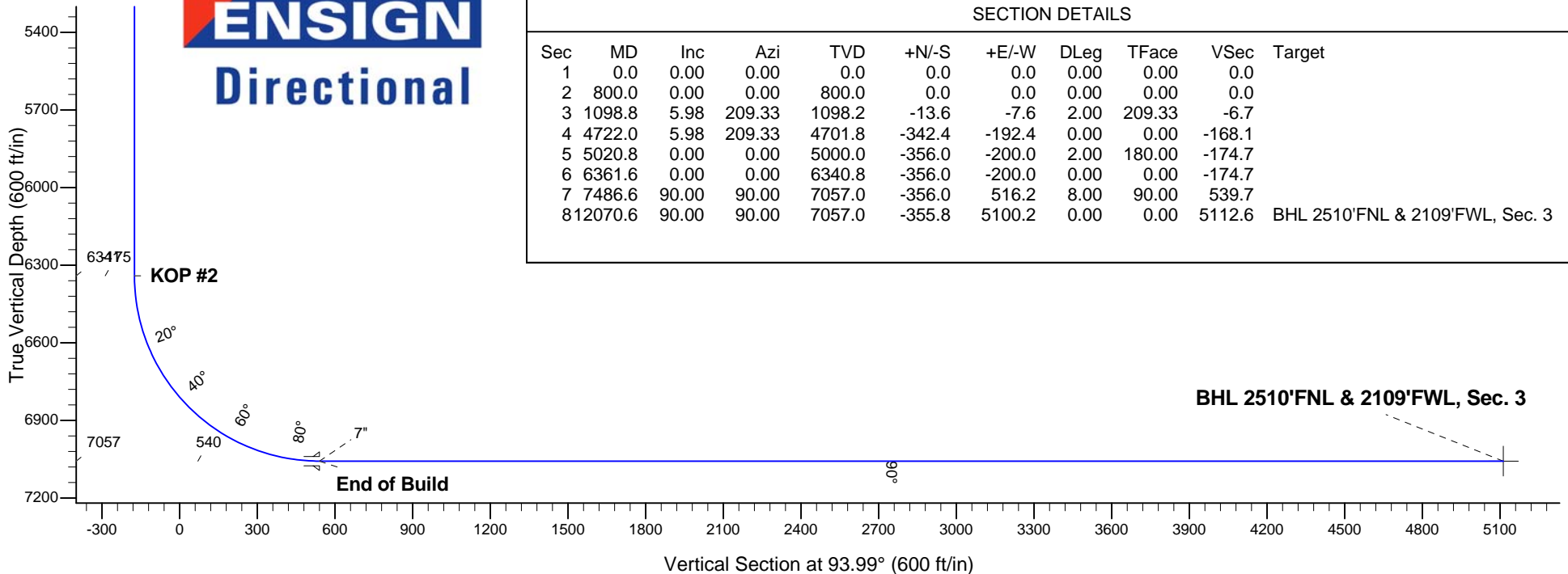
SRC Kelly Farms Pad Sec.4-T5N-R66W
SRC Kelly Farms 22-4-3NHZ #2
Plan #1 (5-20-13)
11:21, May 29 2013

ANNOTATIONS

TVD	MD	Annotation
800.0	800.0	KOP
6340.8	6361.6	KOP #2
7057.0	7486.6	End of Build



ENSIGN
Directional



SECTION DETAILS

Sec	MD	Inc	Azi	TVD	+N/-S	+E/-W	DLeg	TFace	VSec	Target
1	0.0	0.00	0.00	0.0	0.0	0.0	0.00	0.00	0.0	
2	800.0	0.00	0.00	800.0	0.0	0.0	0.00	0.00	0.0	
3	1098.8	5.98	209.33	1098.2	-13.6	-7.6	2.00	209.33	-6.7	
4	4722.0	5.98	209.33	4701.8	-342.4	-192.4	0.00	0.00	-168.1	
5	5020.8	0.00	0.00	5000.0	-356.0	-200.0	2.00	180.00	-174.7	
6	6361.6	0.00	0.00	6340.8	-356.0	-200.0	0.00	0.00	-174.7	
7	7486.6	90.00	90.00	7057.0	-356.0	516.2	8.00	90.00	539.7	
8	12070.6	90.00	90.00	7057.0	-355.8	5100.2	0.00	0.00	5112.6	BHL 2510'FNL & 2109'FWL, Sec. 3



Synergy Resources

SEC.4-T5N-R66W

SRC Kelly Farms Pad Sec.4-T5N-R66W

SRC Kelly Farms 22-4-3NHZ #2

Wellbore #1

Plan: Plan #1 (5-20-13)

Standard Planning Report

29 May, 2013

Database:	Landmark	Local Co-ordinate Reference:	Well SRC Kelly Farms 22-4-3NHZ #2
Company:	Synergy Resources	TVD Reference:	WELL @ 4767.0ft (Original Well Elev)
Project:	SEC.4-T5N-R66W	MD Reference:	WELL @ 4767.0ft (Original Well Elev)
Site:	SRC Kelly Farms Pad Sec.4-T5N-R66W	North Reference:	True
Well:	SRC Kelly Farms 22-4-3NHZ #2	Survey Calculation Method:	Minimum Curvature
Wellbore:	Wellbore #1		
Design:	Plan #1 (5-20-13)		

Project	SEC.4-T5N-R66W, Weld County, Colorado		
Map System:	US State Plane 1983	System Datum:	Mean Sea Level
Geo Datum:	North American Datum 1983		Using Well Reference Point
Map Zone:	Colorado Northern Zone		Using geodetic scale factor

Site	SRC Kelly Farms Pad Sec.4-T5N-R66W				
Site Position:		Northing:	1,400,891.57 ft	Latitude:	40.431645
From:	Lat/Long	Easting:	3,199,103.54 ft	Longitude:	-104.784771
Position Uncertainty:	0.0 ft	Slot Radius:	"	Grid Convergence:	0.46 °

Well	SRC Kelly Farms 22-4-3NHZ #2					
Well Position	+N-S	-66.3 ft	Northing:	1,400,825.37 ft	Latitude:	40.431463
	+E-W	13.4 ft	Easting:	3,199,117.44 ft	Longitude:	-104.784723
Position Uncertainty		0.0 ft	Wellhead Elevation:	ft	Ground Level:	4,754.0 ft

Wellbore	Wellbore #1				
Magnetics	Model Name	Sample Date	Declination (°)	Dip Angle (°)	Field Strength (nT)
	IGRF2010	5/20/2013	8.62	67.01	52,943

Design	Plan #1 (5-20-13)			
Audit Notes:				
Version:	Phase:	PROTOTYPE	Tie On Depth:	0.0
Vertical Section:	Depth From (TVD) (ft)	+N/-S (ft)	+E/-W (ft)	Direction (°)
	0.0	0.0	0.0	93.99

Plan Sections										
Measured Depth (ft)	Inclination (°)	Azimuth (°)	Vertical Depth (ft)	+N/-S (ft)	+E/-W (ft)	Dogleg Rate (°/100ft)	Build Rate (°/100ft)	Turn Rate (°/100ft)	TFO (°)	Target
0.0	0.00	0.00	0.0	0.0	0.0	0.00	0.00	0.00	0.00	
800.0	0.00	0.00	800.0	0.0	0.0	0.00	0.00	0.00	0.00	
1,098.8	5.98	209.33	1,098.2	-13.6	-7.6	2.00	2.00	0.00	209.33	
4,722.0	5.98	209.33	4,701.8	-342.4	-192.4	0.00	0.00	0.00	0.00	
5,020.8	0.00	0.00	5,000.0	-356.0	-200.0	2.00	-2.00	0.00	180.00	
6,361.6	0.00	0.00	6,340.8	-356.0	-200.0	0.00	0.00	0.00	0.00	
7,486.6	90.00	90.00	7,057.0	-356.0	516.2	8.00	8.00	0.00	90.00	
12,070.6	90.00	90.00	7,057.0	-355.8	5,100.2	0.00	0.00	0.00	0.00	BHL 2510'FNL & 21

Database:	Landmark	Local Co-ordinate Reference:	Well SRC Kelly Farms 22-4-3NHZ #2
Company:	Synergy Resources	TVD Reference:	WELL @ 4767.0ft (Original Well Elev)
Project:	SEC.4-T5N-R66W	MD Reference:	WELL @ 4767.0ft (Original Well Elev)
Site:	SRC Kelly Farms Pad Sec.4-T5N-R66W	North Reference:	True
Well:	SRC Kelly Farms 22-4-3NHZ #2	Survey Calculation Method:	Minimum Curvature
Wellbore:	Wellbore #1		
Design:	Plan #1 (5-20-13)		

Planned Survey									
Measured Depth (ft)	Inclination (°)	Azimuth (°)	Vertical Depth (ft)	+N/-S (ft)	+E/-W (ft)	Vertical Section (ft)	Dogleg Rate (°/100ft)	Build Rate (°/100ft)	Turn Rate (°/100ft)
0.0	0.00	0.00	0.0	0.0	0.0	0.0	0.00	0.00	0.00
1.0	0.00	0.00	1.0	0.0	0.0	0.0	0.00	0.00	0.00
SHL 2152'FNL & 2337'FWL, Sec. 4									
100.0	0.00	0.00	100.0	0.0	0.0	0.0	0.00	0.00	0.00
200.0	0.00	0.00	200.0	0.0	0.0	0.0	0.00	0.00	0.00
300.0	0.00	0.00	300.0	0.0	0.0	0.0	0.00	0.00	0.00
400.0	0.00	0.00	400.0	0.0	0.0	0.0	0.00	0.00	0.00
500.0	0.00	0.00	500.0	0.0	0.0	0.0	0.00	0.00	0.00
600.0	0.00	0.00	600.0	0.0	0.0	0.0	0.00	0.00	0.00
700.0	0.00	0.00	700.0	0.0	0.0	0.0	0.00	0.00	0.00
800.0	0.00	0.00	800.0	0.0	0.0	0.0	0.00	0.00	0.00
KOP									
900.0	2.00	209.33	900.0	-1.5	-0.9	-0.7	2.00	2.00	0.00
1,000.0	4.00	209.33	999.8	-6.1	-3.4	-3.0	2.00	2.00	0.00
1,098.8	5.98	209.33	1,098.2	-13.6	-7.6	-6.7	2.00	2.00	0.00
1,100.0	5.98	209.33	1,099.5	-13.7	-7.7	-6.7	0.00	0.00	0.00
1,200.0	5.98	209.33	1,198.9	-22.8	-12.8	-11.2	0.00	0.00	0.00
1,300.0	5.98	209.33	1,298.4	-31.8	-17.9	-15.6	0.00	0.00	0.00
1,400.0	5.98	209.33	1,397.8	-40.9	-23.0	-20.1	0.00	0.00	0.00
1,500.0	5.98	209.33	1,497.3	-50.0	-28.1	-24.5	0.00	0.00	0.00
1,600.0	5.98	209.33	1,596.7	-59.1	-33.2	-29.0	0.00	0.00	0.00
1,700.0	5.98	209.33	1,696.2	-68.1	-38.3	-33.4	0.00	0.00	0.00
1,800.0	5.98	209.33	1,795.6	-77.2	-43.4	-37.9	0.00	0.00	0.00
1,900.0	5.98	209.33	1,895.1	-86.3	-48.5	-42.4	0.00	0.00	0.00
2,000.0	5.98	209.33	1,994.6	-95.4	-53.6	-46.8	0.00	0.00	0.00
2,100.0	5.98	209.33	2,094.0	-104.4	-58.7	-51.3	0.00	0.00	0.00
2,200.0	5.98	209.33	2,193.5	-113.5	-63.8	-55.7	0.00	0.00	0.00
2,300.0	5.98	209.33	2,292.9	-122.6	-68.9	-60.2	0.00	0.00	0.00
2,400.0	5.98	209.33	2,392.4	-131.7	-74.0	-64.6	0.00	0.00	0.00
2,500.0	5.98	209.33	2,491.8	-140.8	-79.1	-69.1	0.00	0.00	0.00
2,600.0	5.98	209.33	2,591.3	-149.8	-84.2	-73.5	0.00	0.00	0.00
2,700.0	5.98	209.33	2,690.8	-158.9	-89.3	-78.0	0.00	0.00	0.00
2,800.0	5.98	209.33	2,790.2	-168.0	-94.4	-82.5	0.00	0.00	0.00
2,900.0	5.98	209.33	2,889.7	-177.1	-99.5	-86.9	0.00	0.00	0.00
3,000.0	5.98	209.33	2,989.1	-186.1	-104.6	-91.4	0.00	0.00	0.00
3,100.0	5.98	209.33	3,088.6	-195.2	-109.7	-95.8	0.00	0.00	0.00
3,200.0	5.98	209.33	3,188.0	-204.3	-114.8	-100.3	0.00	0.00	0.00
3,300.0	5.98	209.33	3,287.5	-213.4	-119.9	-104.7	0.00	0.00	0.00
3,400.0	5.98	209.33	3,387.0	-222.4	-125.0	-109.2	0.00	0.00	0.00
3,500.0	5.98	209.33	3,486.4	-231.5	-130.1	-113.6	0.00	0.00	0.00
3,600.0	5.98	209.33	3,585.9	-240.6	-135.2	-118.1	0.00	0.00	0.00
3,700.0	5.98	209.33	3,685.3	-249.7	-140.3	-122.5	0.00	0.00	0.00
3,800.0	5.98	209.33	3,784.8	-258.7	-145.4	-127.0	0.00	0.00	0.00
3,900.0	5.98	209.33	3,884.2	-267.8	-150.5	-131.5	0.00	0.00	0.00
4,000.0	5.98	209.33	3,983.7	-276.9	-155.6	-135.9	0.00	0.00	0.00
4,100.0	5.98	209.33	4,083.2	-286.0	-160.7	-140.4	0.00	0.00	0.00
4,200.0	5.98	209.33	4,182.6	-295.1	-165.8	-144.8	0.00	0.00	0.00
4,300.0	5.98	209.33	4,282.1	-304.1	-170.9	-149.3	0.00	0.00	0.00
4,400.0	5.98	209.33	4,381.5	-313.2	-176.0	-153.7	0.00	0.00	0.00
4,500.0	5.98	209.33	4,481.0	-322.3	-181.1	-158.2	0.00	0.00	0.00
4,600.0	5.98	209.33	4,580.4	-331.4	-186.2	-162.6	0.00	0.00	0.00
4,700.0	5.98	209.33	4,679.9	-340.4	-191.3	-167.1	0.00	0.00	0.00
4,722.0	5.98	209.33	4,701.8	-342.4	-192.4	-168.1	0.00	0.00	0.00
4,800.0	4.42	209.33	4,779.4	-348.6	-195.8	-171.1	2.00	-2.00	0.00

Database:	Landmark	Local Co-ordinate Reference:	Well SRC Kelly Farms 22-4-3NHZ #2
Company:	Synergy Resources	TVD Reference:	WELL @ 4767.0ft (Original Well Elev)
Project:	SEC.4-T5N-R66W	MD Reference:	WELL @ 4767.0ft (Original Well Elev)
Site:	SRC Kelly Farms Pad Sec.4-T5N-R66W	North Reference:	True
Well:	SRC Kelly Farms 22-4-3NHZ #2	Survey Calculation Method:	Minimum Curvature
Wellbore:	Wellbore #1		
Design:	Plan #1 (5-20-13)		

Planned Survey									
Measured Depth (ft)	Inclination (°)	Azimuth (°)	Vertical Depth (ft)	+N/-S (ft)	+E/-W (ft)	Vertical Section (ft)	Dogleg Rate (°/100ft)	Build Rate (°/100ft)	Turn Rate (°/100ft)
4,900.0	2.42	209.33	4,879.3	-353.8	-198.8	-173.7	2.00	-2.00	0.00
5,000.0	0.42	209.33	4,979.2	-355.9	-200.0	-174.7	2.00	-2.00	0.00
5,020.8	0.00	0.00	5,000.0	-356.0	-200.0	-174.7	2.00	-2.00	0.00
5,100.0	0.00	0.00	5,079.2	-356.0	-200.0	-174.7	0.00	0.00	0.00
5,200.0	0.00	0.00	5,179.2	-356.0	-200.0	-174.7	0.00	0.00	0.00
5,300.0	0.00	0.00	5,279.2	-356.0	-200.0	-174.7	0.00	0.00	0.00
5,400.0	0.00	0.00	5,379.2	-356.0	-200.0	-174.7	0.00	0.00	0.00
5,500.0	0.00	0.00	5,479.2	-356.0	-200.0	-174.7	0.00	0.00	0.00
5,600.0	0.00	0.00	5,579.2	-356.0	-200.0	-174.7	0.00	0.00	0.00
5,700.0	0.00	0.00	5,679.2	-356.0	-200.0	-174.7	0.00	0.00	0.00
5,800.0	0.00	0.00	5,779.2	-356.0	-200.0	-174.7	0.00	0.00	0.00
5,900.0	0.00	0.00	5,879.2	-356.0	-200.0	-174.7	0.00	0.00	0.00
6,000.0	0.00	0.00	5,979.2	-356.0	-200.0	-174.7	0.00	0.00	0.00
6,100.0	0.00	0.00	6,079.2	-356.0	-200.0	-174.7	0.00	0.00	0.00
6,200.0	0.00	0.00	6,179.2	-356.0	-200.0	-174.7	0.00	0.00	0.00
6,300.0	0.00	0.00	6,279.2	-356.0	-200.0	-174.7	0.00	0.00	0.00
6,361.6	0.00	0.00	6,340.8	-356.0	-200.0	-174.7	0.00	0.00	0.00
KOP #2									
6,400.0	3.07	90.00	6,379.2	-356.0	-199.0	-173.7	8.01	8.01	0.00
6,500.0	11.07	90.00	6,478.4	-356.0	-186.7	-161.4	8.00	8.00	0.00
6,600.0	19.07	90.00	6,574.8	-356.0	-160.7	-135.5	8.00	8.00	0.00
6,700.0	27.07	90.00	6,666.8	-356.0	-121.5	-96.5	8.00	8.00	0.00
6,800.0	35.07	90.00	6,752.4	-356.0	-69.9	-45.0	8.00	8.00	0.00
6,900.0	43.07	90.00	6,829.9	-356.0	-7.0	17.8	8.00	8.00	0.00
7,000.0	51.07	90.00	6,898.0	-356.0	66.2	90.8	8.00	8.00	0.00
7,100.0	59.07	90.00	6,955.2	-356.0	148.1	172.5	8.00	8.00	0.00
7,200.0	67.07	90.00	7,000.4	-356.0	237.2	261.4	8.00	8.00	0.00
7,300.0	75.07	90.00	7,032.8	-356.0	331.7	355.7	8.00	8.00	0.00
7,400.0	83.07	90.00	7,051.8	-356.0	429.8	453.6	8.00	8.00	0.00
7,486.6	90.00	90.00	7,057.0	-356.0	516.2	539.7	8.00	8.00	0.00
End of Build - 7"									
7,500.0	90.00	90.00	7,057.0	-356.0	529.6	553.1	0.00	0.00	0.00
7,600.0	90.00	90.00	7,057.0	-356.0	629.6	652.9	0.00	0.00	0.00
7,700.0	90.00	90.00	7,057.0	-356.0	729.6	752.6	0.00	0.00	0.00
7,800.0	90.00	90.00	7,057.0	-356.0	829.6	852.4	0.00	0.00	0.00
7,900.0	90.00	90.00	7,057.0	-355.9	929.6	952.1	0.00	0.00	0.00
8,000.0	90.00	90.00	7,057.0	-355.9	1,029.6	1,051.9	0.00	0.00	0.00
8,100.0	90.00	90.00	7,057.0	-355.9	1,129.6	1,151.7	0.00	0.00	0.00
8,200.0	90.00	90.00	7,057.0	-355.9	1,229.6	1,251.4	0.00	0.00	0.00
8,300.0	90.00	90.00	7,057.0	-355.9	1,329.6	1,351.2	0.00	0.00	0.00
8,400.0	90.00	90.00	7,057.0	-355.9	1,429.6	1,450.9	0.00	0.00	0.00
8,500.0	90.00	90.00	7,057.0	-355.9	1,529.6	1,550.7	0.00	0.00	0.00
8,600.0	90.00	90.00	7,057.0	-355.9	1,629.6	1,650.4	0.00	0.00	0.00
8,700.0	90.00	90.00	7,057.0	-355.9	1,729.6	1,750.2	0.00	0.00	0.00
8,800.0	90.00	90.00	7,057.0	-355.9	1,829.6	1,850.0	0.00	0.00	0.00
8,900.0	90.00	90.00	7,057.0	-355.9	1,929.6	1,949.7	0.00	0.00	0.00
9,000.0	90.00	90.00	7,057.0	-355.9	2,029.6	2,049.5	0.00	0.00	0.00
9,100.0	90.00	90.00	7,057.0	-355.9	2,129.6	2,149.2	0.00	0.00	0.00
9,200.0	90.00	90.00	7,057.0	-355.9	2,229.6	2,249.0	0.00	0.00	0.00
9,300.0	90.00	90.00	7,057.0	-355.9	2,329.6	2,348.7	0.00	0.00	0.00
9,400.0	90.00	90.00	7,057.0	-355.9	2,429.6	2,448.5	0.00	0.00	0.00
9,500.0	90.00	90.00	7,057.0	-355.9	2,529.6	2,548.3	0.00	0.00	0.00
9,600.0	90.00	90.00	7,057.0	-355.9	2,629.6	2,648.0	0.00	0.00	0.00
9,700.0	90.00	90.00	7,057.0	-355.9	2,729.6	2,747.8	0.00	0.00	0.00

Database:	Landmark	Local Co-ordinate Reference:	Well SRC Kelly Farms 22-4-3NHZ #2
Company:	Synergy Resources	TVD Reference:	WELL @ 4767.0ft (Original Well Elev)
Project:	SEC.4-T5N-R66W	MD Reference:	WELL @ 4767.0ft (Original Well Elev)
Site:	SRC Kelly Farms Pad Sec.4-T5N-R66W	North Reference:	True
Well:	SRC Kelly Farms 22-4-3NHZ #2	Survey Calculation Method:	Minimum Curvature
Wellbore:	Wellbore #1		
Design:	Plan #1 (5-20-13)		

Planned Survey										
Measured Depth (ft)	Inclination (°)	Azimuth (°)	Vertical Depth (ft)	+N/-S (ft)	+E/-W (ft)	Vertical Section (ft)	Dogleg Rate (°/100ft)	Build Rate (°/100ft)	Turn Rate (°/100ft)	
9,800.0	90.00	90.00	7,057.0	-355.9	2,829.6	2,847.5	0.00	0.00	0.00	
9,900.0	90.00	90.00	7,057.0	-355.9	2,929.6	2,947.3	0.00	0.00	0.00	
10,000.0	90.00	90.00	7,057.0	-355.9	3,029.6	3,047.0	0.00	0.00	0.00	
10,100.0	90.00	90.00	7,057.0	-355.9	3,129.6	3,146.8	0.00	0.00	0.00	
10,200.0	90.00	90.00	7,057.0	-355.8	3,229.6	3,246.6	0.00	0.00	0.00	
10,300.0	90.00	90.00	7,057.0	-355.8	3,329.6	3,346.3	0.00	0.00	0.00	
10,400.0	90.00	90.00	7,057.0	-355.8	3,429.6	3,446.1	0.00	0.00	0.00	
10,500.0	90.00	90.00	7,057.0	-355.8	3,529.6	3,545.8	0.00	0.00	0.00	
10,600.0	90.00	90.00	7,057.0	-355.8	3,629.6	3,645.6	0.00	0.00	0.00	
10,700.0	90.00	90.00	7,057.0	-355.8	3,729.6	3,745.3	0.00	0.00	0.00	
10,800.0	90.00	90.00	7,057.0	-355.8	3,829.6	3,845.1	0.00	0.00	0.00	
10,900.0	90.00	90.00	7,057.0	-355.8	3,929.6	3,944.9	0.00	0.00	0.00	
11,000.0	90.00	90.00	7,057.0	-355.8	4,029.6	4,044.6	0.00	0.00	0.00	
11,100.0	90.00	90.00	7,057.0	-355.8	4,129.6	4,144.4	0.00	0.00	0.00	
11,200.0	90.00	90.00	7,057.0	-355.8	4,229.6	4,244.1	0.00	0.00	0.00	
11,300.0	90.00	90.00	7,057.0	-355.8	4,329.6	4,343.9	0.00	0.00	0.00	
11,400.0	90.00	90.00	7,057.0	-355.8	4,429.6	4,443.6	0.00	0.00	0.00	
11,500.0	90.00	90.00	7,057.0	-355.8	4,529.6	4,543.4	0.00	0.00	0.00	
11,600.0	90.00	90.00	7,057.0	-355.8	4,629.6	4,643.2	0.00	0.00	0.00	
11,700.0	90.00	90.00	7,057.0	-355.8	4,729.6	4,742.9	0.00	0.00	0.00	
11,800.0	90.00	90.00	7,057.0	-355.8	4,829.6	4,842.7	0.00	0.00	0.00	
11,900.0	90.00	90.00	7,057.0	-355.8	4,929.6	4,942.4	0.00	0.00	0.00	
12,000.0	90.00	90.00	7,057.0	-355.8	5,029.6	5,042.2	0.00	0.00	0.00	
12,070.6	90.00	90.00	7,057.0	-355.8	5,100.2	5,112.6	0.00	0.00	0.00	
BHL 2510'FNL & 2109'FWL, Sec. 3										

Targets										
Target Name	Dip Angle (°)	Dip Dir. (°)	TVD (ft)	+N/-S (ft)	+E/-W (ft)	Northing (ft)	Easting (ft)	Latitude	Longitude	
BHL 2510'FNL & 2109'FWL - hit/miss target - Shape - plan hits target center - Point	0.00	0.00	7,057.0	-355.8	5,100.2	1,400,510.77	3,204,220.16	40.430485	-104.766403	
SHL 2152'FNL & 2337'FWL - plan hits target center - Point	0.00	0.00	1.0	0.0	0.0	1,400,825.38	3,199,117.44	40.431463	-104.784723	

Casing Points					
Measured Depth (ft)	Vertical Depth (ft)	Name	Casing Diameter (")	Hole Diameter (")	
7,486.6	7,057.0	7"	7	7-1/2	

Database:	Landmark	Local Co-ordinate Reference:	Well SRC Kelly Farms 22-4-3NHZ #2
Company:	Synergy Resources	TVD Reference:	WELL @ 4767.0ft (Original Well Elev)
Project:	SEC.4-T5N-R66W	MD Reference:	WELL @ 4767.0ft (Original Well Elev)
Site:	SRC Kelly Farms Pad Sec.4-T5N-R66W	North Reference:	True
Well:	SRC Kelly Farms 22-4-3NHZ #2	Survey Calculation Method:	Minimum Curvature
Wellbore:	Wellbore #1		
Design:	Plan #1 (5-20-13)		

Plan Annotations				
Measured Depth (ft)	Vertical Depth (ft)	Local Coordinates		Comment
		+N/-S (ft)	+E/-W (ft)	
800.0	800.0	0.0	0.0	KOP
6,361.6	6,340.8	-356.0	-200.0	KOP #2
7,486.6	7,057.0	-356.0	516.2	End of Build



Synergy Resources

SEC.4-T5N-R66W

SRC Kelly Farms Pad Sec.4-T5N-R66W

SRC Kelly Farms 22-4-3NHZ #2

Wellbore #1

Plan #1 (5-20-13)

Anticollision Report

29 May, 2013

Company:	Synergy Resources	Local Co-ordinate Reference:	Well SRC Kelly Farms 22-4-3NHZ #2
Project:	SEC.4-T5N-R66W	TVD Reference:	WELL @ 4767.0ft (Original Well Elev)
Reference Site:	SRC Kelly Farms Pad Sec.4-T5N-R66W	MD Reference:	WELL @ 4767.0ft (Original Well Elev)
Site Error:	0.0ft	North Reference:	True
Reference Well:	SRC Kelly Farms 22-4-3NHZ #2	Survey Calculation Method:	Minimum Curvature
Well Error:	0.0ft	Output errors are at	2.00 sigma
Reference Wellbore	Wellbore #1	Database:	Landmark
Reference Design:	Plan #1 (5-20-13)	Offset TVD Reference:	Offset Datum

Offset Design Northridge Pad Sec.4-T5N-R66W - Northridge 12-4D (Exist.) - Wellbore #1 - Wellbore #1													Offset Site Error:	0.0 ft
Survey Program: 182-MWD													Offset Well Error:	0.0 ft
Reference		Offset		Semi Major Axis			Distance							Warning
Measured Depth (ft)	Vertical Depth (ft)	Measured Depth (ft)	Vertical Depth (ft)	Reference (ft)	Offset (ft)	Highside Toolface (°)	Offset Wellbore Centre +N/-S (ft)	+E/-W (ft)	Between Centres (ft)	Between Ellipses (ft)	Minimum Separation (ft)	Separation Factor		
1,400.0	1,397.8	1,448.1	1,429.3	3.0	4.6	-140.54	25.7	155.3	195.5	188.9	6.61	29.593		
1,500.0	1,497.3	1,544.1	1,522.8	3.2	5.0	-144.74	24.7	133.4	182.0	174.8	7.20	25.288		
1,600.0	1,596.7	1,646.9	1,622.3	3.5	5.5	-150.69	24.9	107.7	168.5	160.6	7.92	21.273		
1,700.0	1,696.2	1,747.3	1,718.7	3.8	6.0	-157.99	25.0	79.9	154.6	145.8	8.76	17.652		
1,800.0	1,795.6	1,845.4	1,812.4	4.1	6.6	-167.08	25.4	50.5	142.3	132.5	9.72	14.632		
1,900.0	1,895.1	1,944.4	1,906.2	4.3	7.2	-178.22	25.9	19.3	133.2	122.4	10.81	12.329		
2,000.0	1,994.6	2,043.4	2,000.1	4.6	7.9	169.98	22.9	-12.4	126.6	114.7	11.89	10.649		
2,067.5	2,061.7	2,107.9	2,061.0	4.8	8.3	161.77	20.6	-33.3	125.0	112.5	12.59	9.933 CC, ES		
2,100.0	2,094.0	2,138.3	2,089.6	4.9	8.5	157.66	19.8	-43.6	125.5	112.6	12.92	9.716		
2,200.0	2,193.5	2,231.2	2,176.3	5.2	9.1	144.71	18.7	-77.0	132.9	119.2	13.79	9.638 SF		
2,300.0	2,292.9	2,322.9	2,261.8	5.5	9.7	133.80	18.8	-109.9	148.3	133.9	14.44	10.275		
2,400.0	2,392.4	2,415.5	2,348.8	5.8	10.3	125.94	22.0	-141.4	170.6	155.6	14.95	11.412		
2,500.0	2,491.8	2,510.6	2,438.5	6.1	10.9	120.13	26.0	-172.7	195.5	180.0	15.44	12.658		
2,600.0	2,591.3	2,603.9	2,526.0	6.4	11.6	115.29	29.4	-204.9	222.3	206.4	15.93	13.954		
2,700.0	2,690.8	2,694.7	2,610.9	6.7	12.2	111.42	33.1	-237.1	251.4	234.9	16.45	15.284		
2,800.0	2,790.2	2,781.5	2,690.4	7.0	13.0	107.66	35.4	-271.7	283.4	266.5	16.94	16.730		
2,900.0	2,889.7	2,871.5	2,771.6	7.2	13.7	104.01	37.3	-310.5	318.7	301.2	17.44	18.274		
3,000.0	2,989.1	2,966.5	2,857.9	7.5	14.5	101.03	39.0	-350.2	353.6	335.6	17.95	19.699		
3,100.0	3,088.6	3,050.0	2,933.8	7.8	15.2	99.14	42.6	-384.9	390.4	371.9	18.47	21.141		
3,200.0	3,188.0	3,139.0	3,013.8	8.1	16.0	97.36	47.0	-423.5	429.5	410.5	19.01	22.589		
3,300.0	3,287.5	3,250.2	3,115.3	8.4	16.9	95.60	50.9	-468.9	465.8	446.2	19.62	23.743		
3,400.0	3,387.0	3,353.0	3,210.0	8.7	17.7	94.44	54.9	-508.6	500.9	480.7	20.22	24.776		
3,500.0	3,486.4	3,494.9	3,342.6	9.0	18.7	92.71	53.1	-558.9	531.1	510.2	20.89	25.417		
3,600.0	3,585.9	3,597.0	3,440.6	9.3	19.2	92.30	54.3	-587.5	556.0	534.5	21.49	25.869		
3,700.0	3,685.3	3,704.4	3,544.6	9.6	19.8	92.36	58.3	-613.5	578.9	556.8	22.13	26.165		
3,800.0	3,784.8	3,788.3	3,625.9	9.9	20.2	92.38	61.5	-634.4	602.5	579.8	22.70	26.545		
3,900.0	3,884.2	3,868.0	3,702.2	10.2	20.7	92.25	64.5	-657.0	629.0	605.7	23.26	27.041		
4,000.0	3,983.7	3,946.9	3,777.0	10.5	21.2	91.96	66.9	-682.1	658.0	634.2	23.83	27.615		
4,100.0	4,083.2	4,029.7	3,854.7	10.8	21.8	91.52	68.8	-710.4	688.8	664.4	24.41	28.223		
4,200.0	4,182.6	4,111.3	3,930.7	11.1	22.4	91.00	70.1	-740.3	721.4	696.4	24.98	28.877		
4,300.0	4,282.1	4,213.0	4,024.9	11.4	23.2	90.37	71.9	-778.4	755.0	729.4	25.62	29.474		
4,400.0	4,381.5	4,337.0	4,141.3	11.7	24.0	89.76	72.9	-821.3	785.6	759.3	26.31	29.864		
4,500.0	4,481.0	4,417.0	4,216.6	12.0	24.6	89.36	72.9	-848.5	815.4	788.5	26.87	30.348		
4,600.0	4,580.4	4,507.9	4,301.4	12.3	25.2	88.84	72.4	-881.2	846.7	819.2	27.47	30.819		
4,700.0	4,679.9	4,593.7	4,381.2	12.6	25.9	88.34	71.4	-912.7	878.5	850.4	28.06	31.304		
4,800.0	4,779.4	4,672.6	4,454.1	12.9	26.5	88.38	70.7	-942.7	911.7	883.0	28.70	31.768		
4,900.0	4,879.3	4,751.5	4,526.7	13.1	27.1	88.47	71.0	-973.7	946.8	917.5	29.27	32.342		
5,000.0	4,979.2	4,842.4	4,610.0	13.2	27.9	88.37	72.3	-1,010.0	983.1	953.3	29.82	32.964		

Company:	Synergy Resources	Local Co-ordinate Reference:	Well SRC Kelly Farms 22-4-3NHZ #2
Project:	SEC.4-T5N-R66W	TVD Reference:	WELL @ 4767.0ft (Original Well Elev)
Reference Site:	SRC Kelly Farms Pad Sec.4-T5N-R66W	MD Reference:	WELL @ 4767.0ft (Original Well Elev)
Site Error:	0.0ft	North Reference:	True
Reference Well:	SRC Kelly Farms 22-4-3NHZ #2	Survey Calculation Method:	Minimum Curvature
Well Error:	0.0ft	Output errors are at	2.00 sigma
Reference Wellbore	Wellbore #1	Database:	Landmark
Reference Design:	Plan #1 (5-20-13)	Offset TVD Reference:	Offset Datum

Offset Design Northridge Pad Sec.4-T5N-R66W - Northridge 22-4D (Exist.) - Wellbore #1 - Wellbore #1													Offset Site Error:	0.0 ft
Survey Program: 182-MWD													Offset Well Error:	0.0 ft
Reference		Offset		Semi Major Axis			Distance							Warning
Measured Depth (ft)	Vertical Depth (ft)	Measured Depth (ft)	Vertical Depth (ft)	Reference (ft)	Offset (ft)	Highside Toolface (°)	Offset Wellbore Centre +N/-S (ft)	+E/-W (ft)	Between Centres (ft)	Between Ellipses (ft)	Minimum Separation (ft)	Separation Factor		
0.0	0.0	0.0	0.0	0.0	0.0	95.74	-33.5	333.2	335.2					
100.0	100.0	84.7	84.7	0.1	0.1	95.86	-34.2	333.5	335.2	335.0	0.21	1,574.073		
200.0	200.0	182.0	182.0	0.3	0.2	96.26	-36.7	334.3	336.3	335.7	0.55	608.080		
300.0	300.0	282.8	282.7	0.6	0.4	96.81	-40.0	335.3	337.7	336.7	0.99	341.405		
400.0	400.0	383.3	383.1	0.8	0.6	97.27	-42.9	336.1	338.9	337.5	1.42	238.090		
500.0	500.0	483.9	483.7	1.0	0.9	97.66	-45.3	336.9	340.0	338.1	1.87	182.003		
600.0	600.0	584.6	584.4	1.2	1.1	97.98	-47.3	337.4	340.8	338.4	2.31	147.320		
700.0	700.0	684.8	684.6	1.5	1.3	98.26	-49.1	338.1	341.6	338.9	2.75	124.146		
800.0	800.0	786.6	786.4	1.7	1.5	98.49	-50.5	338.3	342.0	338.8	3.19	107.104		
900.0	900.0	887.5	887.3	1.9	1.7	-111.19	-50.0	338.4	342.7	339.1	3.60	95.142		
1,000.0	999.8	989.9	989.7	2.1	1.9	-112.35	-47.8	338.3	344.3	340.3	3.99	86.181		
1,100.0	1,099.5	1,091.4	1,091.1	2.3	2.1	-113.91	-46.1	337.3	346.5	342.1	4.40	78.822		
1,200.0	1,198.9	1,191.6	1,191.3	2.5	2.3	-115.69	-44.7	335.9	349.5	344.6	4.82	72.505		
1,300.0	1,298.4	1,291.3	1,290.9	2.7	2.6	-117.44	-43.2	334.5	352.6	347.3	5.26	66.990		
1,400.0	1,397.8	1,391.4	1,391.1	3.0	2.8	-119.19	-41.5	332.8	355.9	350.1	5.72	62.250		
1,500.0	1,497.3	1,490.1	1,489.7	3.2	3.0	-120.85	-40.1	331.2	359.4	353.3	6.16	58.325		
1,600.0	1,596.7	1,589.4	1,589.1	3.5	3.2	-122.44	-38.9	329.7	363.4	356.8	6.61	54.974		
1,700.0	1,696.2	1,692.0	1,691.6	3.8	3.4	-124.02	-37.9	327.6	367.3	360.2	7.08	51.901		
1,800.0	1,795.6	1,793.1	1,792.6	4.1	3.6	-125.45	-37.6	325.0	370.6	363.1	7.54	49.169		
1,900.0	1,895.1	1,892.6	1,892.2	4.3	3.8	-126.81	-37.4	322.4	374.3	366.3	8.00	46.803		
2,000.0	1,994.6	1,996.8	1,996.2	4.6	4.0	-128.22	-37.3	319.0	377.3	368.9	8.47	44.552		
2,100.0	2,094.0	2,099.2	2,098.5	4.9	4.3	-129.63	-37.0	314.4	379.5	370.5	8.94	42.446		
2,200.0	2,193.5	2,203.8	2,203.0	5.2	4.5	-131.00	-37.3	309.1	381.3	371.8	9.41	40.506		
2,300.0	2,292.9	2,310.6	2,309.6	5.5	4.7	-132.43	-37.6	301.6	381.2	371.3	9.89	38.538		
2,400.0	2,392.4	2,426.1	2,424.5	5.8	5.0	-134.11	-38.0	290.3	378.8	368.4	10.39	36.451		
2,500.0	2,491.8	2,534.6	2,532.1	6.1	5.3	-135.66	-39.7	276.1	373.1	362.2	10.88	34.300		
2,600.0	2,591.3	2,648.4	2,644.2	6.4	5.6	-137.63	-40.8	257.2	364.4	353.0	11.37	32.036		
2,700.0	2,690.8	2,756.4	2,750.0	6.7	6.0	-139.83	-41.8	235.2	352.5	340.6	11.86	29.724		
2,800.0	2,790.2	2,864.8	2,855.7	7.0	6.3	-142.15	-43.9	211.2	339.0	326.6	12.35	27.448		
2,900.0	2,889.7	2,974.3	2,961.4	7.2	6.8	-144.69	-47.8	183.3	322.3	309.4	12.85	25.075		
3,000.0	2,989.1	3,068.4	3,052.0	7.5	7.1	-147.20	-51.3	158.0	304.7	291.4	13.32	22.882		
3,100.0	3,088.6	3,163.3	3,143.7	7.8	7.5	-149.89	-54.8	133.9	289.2	275.5	13.78	20.989		
3,200.0	3,188.0	3,264.6	3,241.4	8.1	7.9	-153.39	-57.2	107.2	274.4	260.2	14.29	19.204		
3,300.0	3,287.5	3,354.6	3,328.2	8.4	8.3	-157.11	-58.1	83.2	261.2	246.4	14.80	17.647		
3,400.0	3,387.0	3,453.0	3,423.7	8.7	8.7	-161.04	-59.8	59.4	250.8	235.5	15.35	16.337		
3,500.0	3,486.4	3,554.7	3,522.2	9.0	9.1	-165.23	-63.0	34.6	240.6	224.7	15.96	15.073		
3,600.0	3,585.9	3,654.9	3,618.8	9.3	9.6	-170.11	-66.0	8.2	230.5	213.9	16.65	13.842		
3,700.0	3,685.3	3,754.3	3,714.2	9.6	10.1	-175.60	-69.1	-19.4	221.3	203.9	17.43	12.702		
3,800.0	3,784.8	3,853.9	3,809.6	9.9	10.7	-178.41	-73.0	-47.8	213.2	194.9	18.29	11.656		
3,900.0	3,884.2	3,951.0	3,902.2	10.2	11.2	-171.86	-76.9	-76.7	207.0	187.8	19.25	10.755		
4,000.0	3,983.7	4,046.8	3,993.5	10.5	11.7	-165.03	-80.3	-105.6	204.1	183.9	20.25	10.079		
4,036.6	4,020.1	4,082.1	4,027.4	10.6	11.9	-162.66	-81.7	-115.6	203.9	183.3	20.61	9.893 CC		
4,100.0	4,083.2	4,143.2	4,086.3	10.8	12.2	-158.89	-84.2	-131.8	204.5	183.3	21.21	9.638 ES		
4,200.0	4,182.6	4,239.8	4,179.9	11.1	12.6	-153.62	-87.9	-155.1	207.7	185.6	22.11	9.395		
4,300.0	4,282.1	4,337.7	4,275.4	11.4	13.0	-149.16	-91.4	-176.3	212.9	189.9	22.94	9.279		
4,400.0	4,381.5	4,435.6	4,371.5	11.7	13.4	-145.61	-94.5	-194.9	219.5	195.8	23.70	9.261		
4,500.0	4,481.0	4,534.1	4,468.4	12.0	13.7	-142.72	-97.1	-211.9	227.3	202.9	24.41	9.310		
4,600.0	4,580.4	4,633.6	4,566.9	12.3	14.0	-140.74	-99.2	-226.1	235.5	210.5	25.05	9.402		
4,700.0	4,679.9	4,732.0	4,664.7	12.6	14.3	-139.83	-100.7	-236.4	244.0	218.4	25.61	9.527		
4,800.0	4,779.4	4,828.6	4,761.1	12.9	14.5	-139.51	-100.7	-244.1	252.6	226.5	26.10	9.677		
4,900.0	4,879.3	4,928.8	4,861.1	13.1	14.7	-139.42	-99.3	-249.1	259.4	232.9	26.51	9.787		
5,000.0	4,979.2	5,031.2	4,963.4	13.2	14.9	-139.22	-98.3	-252.1	262.8	236.0	26.86	9.784		

CC - Min centre to center distance or convergent point, SF - min separation factor, ES - min ellipse separation

Company:	Synergy Resources	Local Co-ordinate Reference:	Well SRC Kelly Farms 22-4-3NHZ #2
Project:	SEC.4-T5N-R66W	TVD Reference:	WELL @ 4767.0ft (Original Well Elev)
Reference Site:	SRC Kelly Farms Pad Sec.4-T5N-R66W	MD Reference:	WELL @ 4767.0ft (Original Well Elev)
Site Error:	0.0ft	North Reference:	True
Reference Well:	SRC Kelly Farms 22-4-3NHZ #2	Survey Calculation Method:	Minimum Curvature
Well Error:	0.0ft	Output errors are at	2.00 sigma
Reference Wellbore	Wellbore #1	Database:	Landmark
Reference Design:	Plan #1 (5-20-13)	Offset TVD Reference:	Offset Datum

Offset Design Northridge Pad Sec.4-T5N-R66W - Northridge 22-4D (Exist.) - Wellbore #1 - Wellbore #1												Offset Site Error:	0.0 ft
Survey Program: 182-MWD												Offset Well Error:	0.0 ft
Reference		Offset		Semi Major Axis			Distance						
Measured Depth (ft)	Vertical Depth (ft)	Measured Depth (ft)	Vertical Depth (ft)	Reference (ft)	Offset (ft)	Highside Toolface (°)	Offset Wellbore Centre +N/-S (ft)	+E/-W (ft)	Between Centres (ft)	Between Ellipses (ft)	Minimum Separation (ft)	Separation Factor	Warning
5,100.0	5,079.2	5,132.6	5,064.8	13.4	15.1	-11.84	-97.9	-254.1	263.7	240.0	23.72	11.117	
5,200.0	5,179.2	5,232.9	5,165.1	13.6	15.2	-12.18	-97.8	-255.7	264.1	240.1	24.07	10.975	
5,300.0	5,279.2	5,333.7	5,265.9	13.7	15.4	-12.46	-97.8	-257.1	264.4	240.0	24.42	10.828	
5,400.0	5,379.2	5,435.2	5,367.3	13.9	15.5	-12.71	-98.2	-258.1	264.3	239.5	24.78	10.667	
5,500.0	5,479.2	5,536.6	5,468.8	14.0	15.7	-12.88	-99.1	-258.7	263.6	238.4	25.14	10.485	
5,600.0	5,579.2	5,637.4	5,569.6	14.2	15.9	-13.00	-100.3	-259.0	262.4	236.9	25.50	10.291	
5,700.0	5,679.2	5,737.1	5,669.3	14.3	16.0	-13.09	-101.6	-259.2	261.2	235.3	25.86	10.100	
5,800.0	5,779.2	5,837.1	5,769.3	14.5	16.2	-13.16	-102.8	-259.2	260.0	233.8	26.22	9.915	
5,900.0	5,879.2	5,936.8	5,868.9	14.7	16.3	-13.23	-104.0	-259.2	258.9	232.3	26.59	9.735	
6,000.0	5,979.2	6,036.8	5,969.0	14.8	16.5	-13.34	-105.1	-259.5	257.9	230.9	26.96	9.566	
6,100.0	6,079.2	6,137.4	6,069.6	15.0	16.7	-13.45	-106.4	-259.7	256.7	229.3	27.33	9.391	
6,200.0	6,179.2	6,237.5	6,169.6	15.2	16.8	-13.55	-107.8	-259.8	255.4	227.7	27.70	9.218	
6,300.0	6,279.2	6,338.4	6,270.5	15.3	17.0	-13.67	-109.4	-260.0	253.8	225.8	28.08	9.040	
6,400.0	6,379.2	6,439.6	6,371.7	15.5	17.1	-104.07	-111.4	-260.1	252.2	220.5	31.67	7.962	
6,427.3	6,406.4	6,467.1	6,399.2	15.5	17.2	-104.54	-112.0	-260.0	252.1	220.3	31.76	7.937	
6,500.0	6,478.4	6,538.8	6,470.8	15.6	17.3	-106.77	-113.7	-260.0	253.2	221.2	31.98	7.917 SF	
6,600.0	6,574.8	6,633.8	6,565.9	15.7	17.5	-111.80	-115.9	-260.9	260.2	228.1	32.10	8.105	
6,700.0	6,666.8	6,724.9	6,656.9	15.8	17.6	-118.05	-118.0	-262.3	276.5	244.7	31.89	8.672	
6,800.0	6,752.4	6,809.5	6,741.5	15.8	17.8	-124.12	-120.0	-263.8	305.4	274.2	31.25	9.772	
6,900.0	6,829.9	6,886.0	6,817.9	15.9	17.9	-128.95	-121.8	-265.2	348.6	318.2	30.35	11.486	
7,000.0	6,898.0	6,952.4	6,884.3	15.9	18.1	-131.88	-123.5	-266.5	405.9	376.4	29.50	13.756	
7,100.0	6,955.2	7,007.6	6,939.5	16.2	18.2	-132.46	-125.0	-267.7	475.6	446.5	29.19	16.293	
7,200.0	7,000.4	7,050.8	6,982.7	17.3	18.3	-129.98	-126.2	-268.6	555.6	525.6	30.02	18.505	
7,300.0	7,032.8	7,081.0	7,012.8	18.7	18.3	-122.89	-127.1	-269.3	643.2	610.5	32.69	19.676	
7,400.0	7,051.8	7,097.6	7,029.4	20.4	18.3	-108.19	-127.6	-269.7	735.9	698.7	37.24	19.759	
7,500.0	7,057.0	7,100.5	7,032.3	22.3	18.4	-87.07	-127.7	-269.8	831.4	791.1	40.36	20.599	
7,600.0	7,057.0	7,098.2	7,030.0	24.4	18.3	-86.49	-127.6	-269.7	928.0	885.6	42.41	21.880	

Northridge Pad Sec.4-T5N-R66W - Northridge 4KD (Exist.) - Wellbore #1 - Wellbore #1														Offset Site Error:	0.0 ft
Survey Program: 124-MWD														Offset Well Error:	0.0 ft
Reference		Offset		Semi Major Axis			Distance							Warning	
Measured Depth	Vertical Depth	Measured Depth	Vertical Depth	Reference	Offset	Highside Toolface	Offset Wellbore Centre		Between Centres	Between Ellipses	Minimum Separation	Separation Factor			
(ft)	(ft)	(ft)	(ft)	(ft)	(ft)	(°)	+N/-S (ft)	+E/-W (ft)	(ft)	(ft)	(ft)				
0.0	0.0	0.0	0.0	0.0	0.0	97.67	-44.1	327.4	330.6						
100.0	100.0	89.8	89.8	0.1	0.1	97.61	-43.7	327.1	330.0	329.8	0.21	1,539.019			
200.0	200.0	192.6	192.6	0.3	0.3	97.46	-42.6	325.9	328.7	328.1	0.63	523.378			
300.0	300.0	298.4	298.3	0.6	0.5	97.39	-41.9	323.3	326.2	325.1	1.09	299.408			
400.0	400.0	403.5	403.4	0.8	0.8	97.49	-41.9	318.8	322.0	320.5	1.55	207.147			
500.0	500.0	524.6	523.9	1.0	1.2	98.07	-43.7	308.1	313.4	311.3	2.08	150.498			
600.0	600.0	633.9	632.0	1.2	1.7	99.21	-47.4	292.2	299.4	296.8	2.59	115.774			
700.0	700.0	733.8	730.3	1.5	2.2	100.97	-53.4	275.7	284.2	281.1	3.05	93.285			
800.0	800.0	832.4	827.2	1.7	2.7	103.36	-61.5	259.1	269.3	265.8	3.50	76.981			
900.0	900.0	937.8	929.7	1.9	3.4	-102.78	-74.1	238.6	253.8	249.3	4.52	56.208			
1,000.0	999.8	1,040.6	1,029.1	2.1	4.2	-99.74	-87.0	215.5	237.2	231.9	5.36	44.231			
1,100.0	1,099.5	1,138.6	1,123.3	2.3	5.0	-96.71	-100.8	191.9	220.9	214.6	6.31	34.997			
1,200.0	1,198.9	1,234.9	1,215.3	2.5	5.8	-92.74	-116.8	168.3	206.2	198.7	7.42	27.772			
1,300.0	1,298.4	1,335.4	1,310.6	2.7	6.7	-87.39	-135.3	143.0	192.9	184.2	8.66	22.265			
1,400.0	1,397.8	1,431.9	1,402.7	3.0	7.3	-82.04	-150.8	118.1	179.7	169.9	9.79	18.350			
1,500.0	1,497.3	1,528.5	1,494.9	3.2	8.1	-76.04	-167.2	94.5	169.9	158.9	11.00	15.450			
1,600.0	1,596.7	1,625.2	1,587.1	3.5	8.9	-69.25	-184.0	70.6	162.4	150.2	12.21	13.304			
1,700.0	1,696.2	1,723.0	1,680.5	3.8	9.6	-62.08	-201.1	47.1	158.1	144.8	13.33	11.859			
1,800.0	1,795.6	1,821.9	1,774.6	4.1	10.5	-54.23	-218.5	22.5	156.1	141.7	14.39	10.846			
1,883.4	1,878.6	1,906.1	1,854.6	4.3	11.2	-47.15	-232.6	0.3	155.7	140.6	15.12	10.303 CC			
1,900.0	1,895.1	1,922.9	1,870.5	4.3	11.4	-45.69	-235.2	-4.3	155.7	140.5	15.24	10.223 ES			
2,000.0	1,994.6	2,019.7	1,962.7	4.6	12.1	-37.70	-250.1	-30.0	157.7	141.9	15.73	10.026 SF			
2,100.0	2,094.0	2,115.5	2,054.0	4.9	12.9	-30.47	-265.5	-54.4	163.3	147.3	16.06	10.169			
2,200.0	2,193.5	2,214.0	2,148.0	5.2	13.7	-23.66	-281.5	-79.4	171.8	155.6	16.23	10.584			
2,300.0	2,292.9	2,308.4	2,238.2	5.5	14.4	-18.22	-297.5	-102.1	182.9	166.6	16.31	11.217			
2,400.0	2,392.4	2,412.0	2,337.2	5.8	15.2	-12.81	-314.6	-127.5	195.2	178.9	16.33	11.956			
2,500.0	2,491.8	2,512.5	2,433.4	6.1	16.0	-7.75	-328.3	-152.7	206.6	190.3	16.27	12.696			
2,600.0	2,591.3	2,606.1	2,523.2	6.4	16.7	-4.02	-342.6	-175.0	220.1	203.8	16.31	13.491			
2,700.0	2,690.8	2,703.0	2,615.9	6.7	17.5	-0.60	-358.4	-198.5	235.7	219.3	16.39	14.378			
2,800.0	2,790.2	2,801.0	2,709.3	7.0	18.3	3.09	-372.4	-224.6	251.8	235.3	16.43	15.321			
2,900.0	2,889.7	2,895.5	2,798.8	7.2	19.2	6.44	-386.5	-251.3	270.1	253.6	16.50	16.366			
3,000.0	2,989.1	2,994.8	2,893.3	7.5	20.0	9.60	-400.0	-278.8	288.0	271.4	16.60	17.349			
3,100.0	3,088.6	3,082.6	2,976.1	7.8	20.8	12.16	-413.1	-304.9	309.0	292.3	16.76	18.434			
3,200.0	3,188.0	3,183.4	3,070.9	8.1	21.8	14.78	-428.6	-335.5	331.5	314.5	16.98	19.527			
3,300.0	3,287.5	3,285.7	3,167.8	8.4	22.7	17.22	-442.0	-365.3	352.0	334.7	17.22	20.444			
3,400.0	3,387.0	3,375.8	3,253.0	8.7	23.5	19.04	-454.7	-391.6	373.7	356.2	17.52	21.332			
3,500.0	3,486.4	3,473.3	3,344.8	9.0	24.4	20.62	-470.4	-420.4	397.4	379.5	17.89	22.213			
3,600.0	3,585.9	3,580.0	3,446.1	9.3	25.3	22.27	-485.3	-450.7	419.0	400.7	18.29	22.906			
3,700.0	3,685.3	3,693.5	3,554.2	9.6	26.2	24.40	-496.3	-483.5	438.8	420.1	18.70	23.470			
3,800.0	3,784.8	3,772.3	3,629.5	9.9	26.9	25.70	-503.7	-505.2	458.0	438.9	19.10	23.982			
3,900.0	3,884.2	3,845.2	3,698.0	10.2	27.6	26.73	-513.5	-528.2	482.7	463.2	19.52	24.726			
4,000.0	3,983.7	3,925.0	3,771.7	10.5	28.5	27.91	-524.8	-556.7	511.8	491.8	19.99	25.595			
4,100.0	4,083.2	4,014.9	3,854.2	10.8	29.5	29.20	-537.3	-590.1	542.4	521.9	20.52	26.436			
4,200.0	4,182.6	4,096.5	3,928.5	11.1	30.5	30.11	-550.6	-621.0	575.0	554.0	21.03	27.340			
4,300.0	4,282.1	4,199.3	4,022.1	11.4	31.7	31.07	-568.2	-659.9	608.2	586.6	21.63	28.125			
4,400.0	4,381.5	4,319.4	4,132.8	11.7	32.9	32.12	-586.6	-702.6	638.5	616.3	22.28	28.665			
4,500.0	4,481.0	4,413.4	4,220.3	12.0	33.8	32.89	-599.7	-734.3	666.6	643.8	22.85	29.174			
4,600.0	4,580.4	4,499.8	4,300.1	12.3	34.7	33.41	-613.7	-764.2	696.7	673.2	23.41	29.761			
4,700.0	4,679.9	4,604.7	4,397.2	12.6	35.8	33.91	-631.6	-799.6	726.3	702.3	24.03	30.226			
4,800.0	4,779.4	4,709.7	4,495.0	12.9	36.8	34.41	-650.8	-832.9	755.5	731.0	24.57	30.752			
4,900.0	4,879.3	4,849.3	4,626.3	13.1	38.1	34.90	-673.8	-874.1	784.8	759.7	25.12	31.242			
5,000.0	4,979.2	5,001.3	4,772.5	13.2	39.2	35.35	-691.8	-911.6	810.3	784.7	25.63	31.611			

COMPASS 2003.21 Build 46

Company:	Synergy Resources	Local Co-ordinate Reference:	Well SRC Kelly Farms 22-4-3NHZ #2
Project:	SEC.4-T5N-R66W	TVD Reference:	WELL @ 4767.0ft (Original Well Elev)
Reference Site:	SRC Kelly Farms Pad Sec.4-T5N-R66W	MD Reference:	WELL @ 4767.0ft (Original Well Elev)
Site Error:	0.0ft	North Reference:	True
Reference Well:	SRC Kelly Farms 22-4-3NHZ #2	Survey Calculation Method:	Minimum Curvature
Well Error:	0.0ft	Output errors are at	2.00 sigma
Reference Wellbore	Wellbore #1	Database:	Landmark
Reference Design:	Plan #1 (5-20-13)	Offset TVD Reference:	Offset Datum

Offset Design Northridge Pad Sec.4-T5N-R66W - Northridge 4KD (Exist.) - Wellbore #1 - Wellbore #1												Offset Site Error:	0.0 ft
Survey Program: 124-MWD												Offset Well Error:	0.0 ft
Reference		Offset		Semi Major Axis			Distance						
Measured Depth (ft)	Vertical Depth (ft)	Measured Depth (ft)	Vertical Depth (ft)	Reference (ft)	Offset (ft)	Highside Toolface (°)	Offset Wellbore Centre +N/-S (ft)	+E/-W (ft)	Between Centres (ft)	Between Ellipses (ft)	Minimum Separation (ft)	Separation Factor	Warning
5,100.0	5,079.2	5,110.6	4,878.9	13.4	39.9	-115.18	-701.4	-934.6	833.0	780.5	52.55	15.851	
5,200.0	5,179.2	5,239.2	5,004.7	13.6	40.6	-115.06	-711.2	-959.7	854.1	800.7	53.44	15.983	
5,300.0	5,279.2	5,391.4	5,154.9	13.7	41.3	-114.94	-719.7	-982.2	869.8	815.5	54.26	16.029	
5,400.0	5,379.2	5,525.3	5,288.0	13.9	41.7	-114.86	-724.7	-995.7	880.4	825.6	54.84	16.055	
5,500.0	5,479.2	5,646.9	5,409.2	14.0	42.0	-114.83	-728.1	-1,004.3	888.0	832.7	55.29	16.062	
5,600.0	5,579.2	5,771.7	5,533.9	14.2	42.2	-114.83	-730.8	-1,010.0	893.1	837.4	55.68	16.041	
5,700.0	5,679.2	5,888.9	5,651.1	14.3	42.3	-114.81	-731.8	-1,012.8	895.6	839.6	55.99	15.997	
5,800.0	5,779.2	5,992.4	5,754.5	14.5	42.4	-114.80	-732.3	-1,014.3	897.2	840.9	56.25	15.949	
5,900.0	5,879.2	6,098.2	5,860.4	14.7	42.5	-114.80	-732.7	-1,015.2	898.0	841.5	56.51	15.891	
6,000.0	5,979.2	6,199.3	5,961.4	14.8	42.6	-114.81	-733.0	-1,015.7	898.6	841.9	56.76	15.831	
6,100.0	6,079.2	6,301.4	6,063.6	15.0	42.7	-114.81	-733.3	-1,016.1	899.1	842.1	57.01	15.770	
6,200.0	6,179.2	6,403.5	6,165.7	15.2	42.7	-114.82	-733.4	-1,016.2	899.2	842.0	57.26	15.705	
6,300.0	6,279.2	6,505.0	6,267.1	15.3	42.8	-114.83	-733.5	-1,016.1	899.2	841.7	57.50	15.637	
6,344.4	6,323.6	6,550.0	6,312.2	15.4	42.8	155.18	-733.6	-1,016.0	899.6	868.8	30.80	29.205	
6,400.0	6,379.2	6,606.4	6,368.6	15.5	42.9	155.16	-733.7	-1,015.9	900.0	869.1	30.85	29.176	
6,500.0	6,478.4	6,706.1	6,468.2	15.6	42.9	155.09	-734.0	-1,015.4	910.8	880.6	30.23	30.126	
6,600.0	6,574.8	6,799.9	6,562.0	15.7	43.0	154.89	-734.4	-1,015.0	934.4	905.1	29.23	31.970	
6,700.0	6,666.8	6,891.1	6,653.2	15.8	43.1	154.52	-735.0	-1,014.8	970.4	942.4	27.95	34.718	

Company:	Synergy Resources	Local Co-ordinate Reference:	Well SRC Kelly Farms 22-4-3NHZ #2
Project:	SEC.4-T5N-R66W	TVD Reference:	WELL @ 4767.0ft (Original Well Elev)
Reference Site:	SRC Kelly Farms Pad Sec.4-T5N-R66W	MD Reference:	WELL @ 4767.0ft (Original Well Elev)
Site Error:	0.0ft	North Reference:	True
Reference Well:	SRC Kelly Farms 22-4-3NHZ #2	Survey Calculation Method:	Minimum Curvature
Well Error:	0.0ft	Output errors are at	2.00 sigma
Reference Wellbore	Wellbore #1	Database:	Landmark
Reference Design:	Plan #1 (5-20-13)	Offset TVD Reference:	Offset Datum

Offset Design													Offset Site Error:	0.0 ft
Survey Program: 0-MWD													Offset Well Error:	0.0 ft
Reference		Offset		Semi Major Axis			Distance							Warning
Measured Depth (ft)	Vertical Depth (ft)	Measured Depth (ft)	Vertical Depth (ft)	Reference (ft)	Offset (ft)	Highside Toolface (°)	Offset Wellbore Centre +N/-S (ft)	+E/-W (ft)	Between Centres (ft)	Between Ellipses (ft)	Minimum Separation (ft)	Separation Factor		
0.0	0.0	0.0	0.0	0.0	0.0	-11.33	22.2	-4.5	22.7					
100.0	100.0	99.0	99.0	0.1	0.1	-11.33	22.2	-4.5	22.7	22.4	0.22	101.345		
200.0	200.0	199.0	199.0	0.3	0.3	-11.33	22.2	-4.5	22.7	22.0	0.67	33.725		
300.0	300.0	299.0	299.0	0.6	0.6	-11.33	22.2	-4.5	22.7	21.5	1.12	20.208		
400.0	400.0	399.0	399.0	0.8	0.8	-11.33	22.2	-4.5	22.7	21.1	1.57	14.426		
500.0	500.0	499.0	499.0	1.0	1.0	-11.33	22.2	-4.5	22.7	20.6	2.02	11.217		
600.0	600.0	599.0	599.0	1.2	1.2	-11.33	22.2	-4.5	22.7	20.2	2.47	9.176		
700.0	700.0	699.0	699.0	1.5	1.5	-11.33	22.2	-4.5	22.7	19.7	2.92	7.763		
800.0	800.0	799.0	799.0	1.7	1.7	-11.33	22.2	-4.5	22.7	19.3	3.37	6.727 CC, ES		
900.0	900.0	899.0	899.0	1.9	1.9	142.04	22.2	-4.5	24.0	20.2	3.79	6.332		
1,000.0	999.8	998.8	998.8	2.1	2.1	148.51	22.2	-4.5	28.3	24.1	4.20	6.747		
1,100.0	1,099.5	1,099.4	1,099.4	2.3	2.3	153.94	21.0	-5.7	34.8	30.2	4.59	7.577		
1,200.0	1,198.9	1,200.2	1,200.1	2.5	2.5	155.52	17.3	-9.4	40.2	35.3	4.97	8.093		
1,300.0	1,298.4	1,301.3	1,300.7	2.7	2.7	153.75	11.0	-15.6	43.1	37.7	5.38	8.000		
1,400.0	1,397.8	1,402.1	1,400.8	3.0	3.0	149.02	2.3	-24.3	43.5	37.6	5.83	7.457		
1,465.7	1,463.2	1,467.8	1,465.9	3.2	3.1	145.20	-3.9	-30.6	43.4	37.2	6.14	7.060		
1,500.0	1,497.3	1,502.0	1,499.8	3.2	3.2	143.20	-7.1	-33.8	43.4	37.1	6.31	6.877		
1,600.0	1,596.7	1,601.9	1,598.8	3.5	3.5	137.43	-16.6	-43.3	43.8	36.9	6.82	6.411		
1,700.0	1,696.2	1,701.8	1,697.8	3.8	3.7	131.81	-26.1	-52.7	44.6	37.2	7.37	6.044		
1,800.0	1,795.6	1,801.8	1,796.8	4.1	4.0	126.44	-35.5	-62.2	45.8	37.8	7.95	5.759		
1,900.0	1,895.1	1,901.7	1,895.8	4.3	4.3	121.39	-45.0	-71.7	47.4	38.8	8.55	5.545		
2,000.0	1,994.6	2,001.6	1,994.8	4.6	4.6	116.70	-54.5	-81.1	49.3	40.2	9.16	5.388		
2,100.0	2,094.0	2,101.5	2,093.8	4.9	4.9	112.40	-63.9	-90.6	51.6	41.8	9.78	5.277		
2,200.0	2,193.5	2,201.4	2,192.8	5.2	5.3	108.47	-73.4	-100.1	54.1	43.7	10.40	5.203		
2,300.0	2,292.9	2,301.3	2,291.8	5.5	5.6	104.91	-82.9	-109.5	56.9	45.8	11.02	5.159		
2,400.0	2,392.4	2,401.2	2,390.8	5.8	5.9	101.69	-92.3	-119.0	59.8	48.2	11.64	5.137		
2,500.0	2,491.8	2,501.1	2,489.8	6.1	6.2	98.78	-101.8	-128.5	62.9	50.7	12.26	5.133		
2,600.0	2,591.3	2,601.0	2,588.8	6.4	6.5	96.15	-111.3	-138.0	66.2	53.3	12.87	5.142		
2,700.0	2,690.8	2,700.9	2,687.8	6.7	6.9	93.77	-120.7	-147.4	69.6	56.1	13.48	5.161		
2,800.0	2,790.2	2,800.8	2,786.8	7.0	7.2	91.61	-130.2	-156.9	73.1	59.0	14.09	5.187		
2,900.0	2,889.7	2,900.7	2,885.9	7.2	7.5	89.66	-139.7	-166.4	76.7	62.0	14.69	5.219		
3,000.0	2,989.1	3,000.6	2,984.9	7.5	7.9	87.88	-149.1	-175.8	80.3	65.1	15.29	5.254		
3,100.0	3,088.6	3,100.5	3,083.9	7.8	8.2	86.26	-158.6	-185.3	84.1	68.2	15.89	5.293		
3,200.0	3,188.0	3,200.4	3,182.9	8.1	8.5	84.77	-168.1	-194.8	87.9	71.4	16.48	5.333		
3,300.0	3,287.5	3,300.3	3,281.9	8.4	8.9	83.41	-177.5	-204.2	91.8	74.7	17.08	5.374		
3,400.0	3,387.0	3,400.2	3,380.9	8.7	9.2	82.17	-187.0	-213.7	95.7	78.0	17.67	5.415		
3,500.0	3,486.4	3,500.1	3,479.9	9.0	9.5	81.02	-196.5	-223.2	99.6	81.4	18.26	5.457		
3,600.0	3,585.9	3,600.0	3,578.9	9.3	9.9	79.95	-205.9	-232.6	103.6	84.8	18.84	5.499		
3,700.0	3,685.3	3,701.0	3,679.0	9.6	10.2	79.30	-215.0	-241.7	107.3	87.9	19.41	5.528		
3,800.0	3,784.8	3,802.6	3,780.2	9.9	10.4	80.24	-221.8	-248.5	109.6	89.6	19.96	5.490		
3,900.0	3,884.2	3,904.1	3,881.5	10.2	10.6	82.84	-226.0	-252.7	110.5	89.9	20.54	5.379		
4,000.0	3,983.7	4,005.1	3,982.5	10.5	10.8	87.12	-227.7	-254.4	110.4	89.3	21.12	5.228		
4,053.9	4,037.3	4,058.9	4,036.3	10.7	10.9	90.00	-227.8	-254.5	110.3	88.9	21.42	5.148		
4,100.0	4,083.2	4,104.8	4,082.2	10.8	10.9	92.48	-227.8	-254.5	110.4	88.7	21.67	5.094		
4,200.0	4,182.6	4,204.2	4,181.6	11.1	11.1	97.81	-227.8	-254.5	111.3	89.2	22.15	5.025		
4,300.0	4,282.1	4,303.7	4,281.1	11.4	11.3	103.01	-227.8	-254.5	113.2	90.6	22.58	5.014		
4,400.0	4,381.5	4,403.2	4,380.5	11.7	11.4	108.00	-227.8	-254.5	116.0	93.1	22.95	5.054		
4,500.0	4,481.0	4,502.6	4,480.0	12.0	11.6	112.73	-227.8	-254.5	119.7	96.4	23.28	5.139		
4,600.0	4,580.4	4,602.1	4,579.4	12.3	11.7	117.15	-227.8	-254.5	124.1	100.5	23.58	5.262		
4,700.0	4,679.9	4,701.5	4,678.9	12.6	11.9	121.24	-227.8	-254.5	129.2	105.3	23.85	5.415		
4,800.0	4,779.4	4,801.1	4,778.4	12.9	12.1	124.71	-227.8	-254.5	134.3	110.2	24.10	5.571		
4,900.0	4,879.3	4,900.9	4,878.3	13.1	12.3	126.80	-227.8	-254.5	137.8	113.4	24.35	5.657		

CC - Min centre to center distance or convergent point, SF - min separation factor, ES - min ellipse separation

Company:	Synergy Resources	Local Co-ordinate Reference:	Well SRC Kelly Farms 22-4-3NHZ #2
Project:	SEC.4-T5N-R66W	TVD Reference:	WELL @ 4767.0ft (Original Well Elev)
Reference Site:	SRC Kelly Farms Pad Sec.4-T5N-R66W	MD Reference:	WELL @ 4767.0ft (Original Well Elev)
Site Error:	0.0ft	North Reference:	True
Reference Well:	SRC Kelly Farms 22-4-3NHZ #2	Survey Calculation Method:	Minimum Curvature
Well Error:	0.0ft	Output errors are at	2.00 sigma
Reference Wellbore	Wellbore #1	Database:	Landmark
Reference Design:	Plan #1 (5-20-13)	Offset TVD Reference:	Offset Datum

Offset Design												Offset Site Error:	0.0 ft
Survey Program: 0-MWD												Offset Well Error:	0.0 ft
Reference		Offset		Semi Major Axis			Distance						Warning
Measured Depth (ft)	Vertical Depth (ft)	Measured Depth (ft)	Vertical Depth (ft)	Reference (ft)	Offset (ft)	Highside Toolface (°)	Offset Wellbore Centre +N/-S (ft)	+E/-W (ft)	Between Centres (ft)	Between Ellipses (ft)	Minimum Separation (ft)	Separation Factor	
5,000.0	4,979.2	5,000.9	4,978.2	13.2	12.4	127.64	-227.8	-254.5	139.3	114.6	24.65	5.650	
5,100.0	5,079.2	5,100.9	5,078.2	13.4	12.6	-23.01	-227.8	-254.5	139.3	116.1	23.23	5.998	
5,200.0	5,179.2	5,200.9	5,178.2	13.6	12.8	-23.01	-227.8	-254.5	139.3	115.7	23.59	5.905	
5,300.0	5,279.2	5,300.9	5,278.2	13.7	13.0	-23.01	-227.8	-254.5	139.3	115.3	23.96	5.814	
5,400.0	5,379.2	5,400.9	5,378.2	13.9	13.1	-23.01	-227.8	-254.5	139.3	115.0	24.33	5.726	
5,500.0	5,479.2	5,500.9	5,478.2	14.0	13.3	-23.01	-227.8	-254.5	139.3	114.6	24.70	5.639	
5,600.0	5,579.2	5,600.9	5,578.2	14.2	13.5	-23.01	-227.8	-254.5	139.3	114.2	25.08	5.555	
5,700.0	5,679.2	5,700.9	5,678.2	14.3	13.7	-23.01	-227.8	-254.5	139.3	113.8	25.46	5.472	
5,800.0	5,779.2	5,800.9	5,778.2	14.5	13.9	-23.01	-227.8	-254.5	139.3	113.5	25.84	5.391	
5,900.0	5,879.2	5,900.9	5,878.2	14.7	14.1	-23.01	-227.8	-254.5	139.3	113.1	26.22	5.313	
6,000.0	5,979.2	6,000.9	5,978.2	14.8	14.2	-23.01	-227.8	-254.5	139.3	112.7	26.61	5.236	
6,100.0	6,079.2	6,100.9	6,078.2	15.0	14.4	-23.01	-227.8	-254.5	139.3	112.3	26.99	5.161	
6,200.0	6,179.2	6,200.9	6,178.2	15.2	14.6	-23.01	-227.8	-254.5	139.3	111.9	27.38	5.088	
6,300.0	6,279.2	6,300.9	6,278.2	15.3	14.8	-23.01	-227.8	-254.5	139.3	111.5	27.77	5.016	
6,400.0	6,379.2	6,404.1	6,381.4	15.5	15.0	-112.85	-227.7	-252.9	139.2	109.5	29.68	4.690	
6,500.0	6,478.4	6,511.3	6,487.5	15.6	15.1	-112.10	-227.2	-238.0	139.1	109.2	29.83	4.661	
6,536.9	6,514.4	6,550.8	6,525.9	15.7	15.2	-111.70	-226.8	-228.5	139.0	109.2	29.83	4.662	
6,600.0	6,574.8	6,618.2	6,589.8	15.7	15.2	-110.85	-226.0	-207.5	139.1	109.3	29.79	4.669	
6,700.0	6,666.8	6,724.5	6,686.0	15.8	15.2	-109.14	-224.3	-162.5	139.4	109.7	29.67	4.697	
6,800.0	6,752.4	6,830.2	6,774.0	15.8	15.3	-107.01	-222.2	-104.1	140.0	110.3	29.67	4.718	
6,900.0	6,829.9	6,935.1	6,851.8	15.9	15.4	-104.54	-219.5	-34.0	141.0	111.0	30.00	4.700	
7,000.0	6,898.0	7,039.1	6,918.1	15.9	15.7	-101.81	-216.5	45.9	142.5	111.6	30.89	4.613	
7,100.0	6,955.2	7,142.1	6,971.6	16.2	16.5	-98.90	-213.3	133.8	144.5	112.0	32.49	4.448	
7,200.0	7,000.4	7,244.2	7,011.7	17.3	17.8	-95.90	-209.8	227.5	147.1	112.2	34.84	4.221	
7,300.0	7,032.8	7,345.2	7,037.9	18.7	19.3	-92.90	-206.1	324.9	150.1	112.3	37.85	3.967	
7,400.0	7,051.8	7,445.3	7,050.0	20.4	21.1	-89.98	-202.4	424.1	153.7	112.3	41.33	3.718	
7,500.0	7,057.0	7,545.0	7,051.0	22.3	23.1	-88.18	-198.7	523.7	157.5	112.3	45.17	3.487	
7,600.0	7,057.0	7,644.9	7,051.0	24.4	25.2	-88.22	-194.9	623.6	161.2	111.8	49.36	3.266	
7,700.0	7,057.0	7,744.8	7,051.0	26.6	27.4	-88.26	-191.2	723.5	164.9	111.1	53.82	3.065	
7,800.0	7,057.0	7,844.8	7,051.0	29.0	29.7	-88.30	-187.5	823.3	168.7	110.2	58.47	2.885	
7,900.0	7,057.0	7,944.7	7,051.0	31.4	32.1	-88.34	-183.7	923.2	172.4	109.1	63.28	2.725	
8,000.0	7,057.0	8,044.6	7,051.0	33.8	34.6	-88.37	-180.0	1,023.0	176.1	107.9	68.21	2.582	
8,100.0	7,057.0	8,144.6	7,051.0	36.3	37.1	-88.41	-176.3	1,122.9	179.9	106.6	73.23	2.456	
8,200.0	7,057.0	8,244.5	7,051.0	38.9	39.7	-88.44	-172.5	1,222.8	183.6	105.3	78.34	2.344	
8,300.0	7,057.0	8,344.4	7,051.0	41.5	42.2	-88.47	-168.8	1,322.6	187.3	103.8	83.51	2.243	
8,400.0	7,057.0	8,444.4	7,051.0	44.1	44.8	-88.50	-165.1	1,422.5	191.1	102.3	88.73	2.153	
8,500.0	7,057.0	8,544.3	7,051.0	46.7	47.5	-88.53	-161.3	1,522.3	194.8	100.8	93.99	2.072	
8,600.0	7,057.0	8,644.2	7,051.0	49.4	50.1	-88.56	-157.6	1,622.2	198.5	99.2	99.29	1.999	
8,700.0	7,057.0	8,744.1	7,051.0	52.0	52.8	-88.58	-153.9	1,722.1	202.3	97.6	104.63	1.933	
8,800.0	7,057.0	8,844.1	7,051.0	54.7	55.4	-88.61	-150.1	1,821.9	206.0	96.0	109.99	1.873	
8,900.0	7,057.0	8,944.0	7,051.0	57.4	58.1	-88.63	-146.4	1,921.8	209.7	94.3	115.37	1.818	
9,000.0	7,057.0	9,043.9	7,051.0	60.1	60.8	-88.66	-142.7	2,021.6	213.5	92.7	120.78	1.767	
9,100.0	7,057.0	9,143.9	7,051.0	62.8	63.5	-88.68	-138.9	2,121.5	217.2	91.0	126.20	1.721	
9,200.0	7,057.0	9,243.8	7,051.0	65.5	66.2	-88.70	-135.2	2,221.4	220.9	89.3	131.63	1.678	
9,300.0	7,057.0	9,343.7	7,051.0	68.3	69.0	-88.72	-131.5	2,321.2	224.6	87.6	137.08	1.639	
9,400.0	7,057.0	9,443.7	7,051.0	71.0	71.7	-88.74	-127.7	2,421.1	228.4	85.8	142.54	1.602	
9,500.0	7,057.0	9,543.6	7,051.0	73.7	74.4	-88.76	-124.0	2,521.0	232.1	84.1	148.02	1.568	
9,600.0	7,057.0	9,643.5	7,051.0	76.5	77.1	-88.78	-120.3	2,620.8	235.8	82.3	153.50	1.536	
9,700.0	7,057.0	9,743.4	7,051.0	79.2	79.9	-88.80	-116.5	2,720.7	239.6	80.6	158.99	1.507	
9,800.0	7,057.0	9,843.4	7,051.0	82.0	82.6	-88.82	-112.8	2,820.5	243.3	78.8	164.49	1.479 Level 3	
9,900.0	7,057.0	9,943.3	7,051.0	84.7	85.4	-88.84	-109.0	2,920.4	247.0	77.0	169.99	1.453 Level 3	
10,000.0	7,057.0	10,043.2	7,051.0	87.5	88.1	-88.86	-105.3	3,020.3	250.8	75.3	175.50	1.429 Level 3	

CC - Min centre to center distance or convergent point, SF - min separation factor, ES - min ellipse separation

Company:	Synergy Resources	Local Co-ordinate Reference:	Well SRC Kelly Farms 22-4-3NHZ #2
Project:	SEC.4-T5N-R66W	TVD Reference:	WELL @ 4767.0ft (Original Well Elev)
Reference Site:	SRC Kelly Farms Pad Sec.4-T5N-R66W	MD Reference:	WELL @ 4767.0ft (Original Well Elev)
Site Error:	0.0ft	North Reference:	True
Reference Well:	SRC Kelly Farms 22-4-3NHZ #2	Survey Calculation Method:	Minimum Curvature
Well Error:	0.0ft	Output errors are at	2.00 sigma
Reference Wellbore	Wellbore #1	Database:	Landmark
Reference Design:	Plan #1 (5-20-13)	Offset TVD Reference:	Offset Datum

Offset Design													Offset Site Error:	0.0 ft
Survey Program: 0-MWD													Offset Well Error:	0.0 ft
Reference		Offset		Semi Major Axis			Distance							Warning
Measured Depth (ft)	Vertical Depth (ft)	Measured Depth (ft)	Vertical Depth (ft)	Reference (ft)	Offset (ft)	Highside Toolface (°)	Offset Wellbore Centre +N/-S (ft)	+E/-W (ft)	Between Centres (ft)	Between Ellipses (ft)	Minimum Separation (ft)	Separation Factor		
10,100.0	7,057.0	10,143.2	7,051.0	90.3	90.9	-88.87	-101.6	3,120.1	254.5	73.5	181.02	1.406	Level 3	
10,200.0	7,057.0	10,243.1	7,051.0	93.0	93.6	-88.89	-97.8	3,220.0	258.2	71.7	186.54	1.384	Level 3	
10,300.0	7,057.0	10,343.0	7,051.0	95.8	96.4	-88.91	-94.1	3,319.8	262.0	69.9	192.07	1.364	Level 3	
10,400.0	7,057.0	10,443.0	7,051.0	98.6	99.1	-88.92	-90.4	3,419.7	265.7	68.1	197.60	1.345	Level 3	
10,500.0	7,057.0	10,542.9	7,051.0	101.3	101.9	-88.94	-86.6	3,519.6	269.4	66.3	203.13	1.326	Level 3	
10,600.0	7,057.0	10,642.8	7,051.0	104.1	104.7	-88.95	-82.9	3,619.4	273.2	64.5	208.67	1.309	Level 3	
10,700.0	7,057.0	10,742.8	7,051.0	106.9	107.4	-88.96	-79.2	3,719.3	276.9	62.7	214.21	1.293	Level 3	
10,800.0	7,057.0	10,842.7	7,051.0	109.7	110.2	-88.98	-75.4	3,819.1	280.6	60.9	219.76	1.277	Level 3	
10,900.0	7,057.0	10,942.6	7,051.0	112.4	113.0	-88.99	-71.7	3,919.0	284.4	59.1	225.30	1.262	Level 3	
11,000.0	7,057.0	11,042.5	7,051.0	115.2	115.7	-89.00	-68.0	4,018.9	288.1	57.2	230.85	1.248	Level 2	
11,100.0	7,057.0	11,142.5	7,051.0	118.0	118.5	-89.02	-64.2	4,118.7	291.8	55.4	236.41	1.234	Level 2	
11,200.0	7,057.0	11,242.4	7,051.0	120.8	121.3	-89.03	-60.5	4,218.6	295.6	53.6	241.96	1.221	Level 2	
11,300.0	7,057.0	11,342.3	7,051.0	123.6	124.1	-89.04	-56.8	4,318.4	299.3	51.8	247.52	1.209	Level 2	
11,400.0	7,057.0	11,442.3	7,051.0	126.4	126.8	-89.05	-53.0	4,418.3	303.0	49.9	253.08	1.197	Level 2	
11,500.0	7,057.0	11,542.2	7,051.0	129.1	129.6	-89.07	-49.3	4,518.2	306.7	48.1	258.64	1.186	Level 2	
11,600.0	7,057.0	11,642.1	7,051.0	131.9	132.4	-89.08	-45.6	4,618.0	310.5	46.3	264.20	1.175	Level 2	
11,700.0	7,057.0	11,742.1	7,051.0	134.7	135.2	-89.09	-41.8	4,717.9	314.2	44.4	269.77	1.165	Level 2	
11,800.0	7,057.0	11,842.0	7,051.0	137.5	137.9	-89.10	-38.1	4,817.7	317.9	42.6	275.33	1.155	Level 2	
11,900.0	7,057.0	11,941.9	7,051.0	140.3	140.7	-89.11	-34.4	4,917.6	321.7	40.8	280.90	1.145	Level 2	
12,000.0	7,057.0	12,041.8	7,051.0	143.1	143.5	-89.12	-30.6	5,017.5	325.4	38.9	286.47	1.136	Level 2	
12,070.6	7,057.0	12,112.4	7,051.0	145.1	145.5	-89.13	-28.0	5,088.0	328.0	37.6	290.40	1.130	Level 2, SF	

Company:	Synergy Resources	Local Co-ordinate Reference:	Well SRC Kelly Farms 22-4-3NHZ #2
Project:	SEC.4-T5N-R66W	TVD Reference:	WELL @ 4767.0ft (Original Well Elev)
Reference Site:	SRC Kelly Farms Pad Sec.4-T5N-R66W	MD Reference:	WELL @ 4767.0ft (Original Well Elev)
Site Error:	0.0ft	North Reference:	True
Reference Well:	SRC Kelly Farms 22-4-3NHZ #2	Survey Calculation Method:	Minimum Curvature
Well Error:	0.0ft	Output errors are at	2.00 sigma
Reference Wellbore	Wellbore #1	Database:	Landmark
Reference Design:	Plan #1 (5-20-13)	Offset TVD Reference:	Offset Datum

Offset Design													Offset Site Error:	0.0 ft
Survey Program: 0-MWD													Offset Well Error:	0.0 ft
Measured Depth (ft)	Vertical Depth (ft)	Measured Depth (ft)	Vertical Depth (ft)	Reference (ft)	Offset (ft)	Semi Major Axis Highside Toolface (°)	Offset Wellbore Centre +N/-S (ft)	+E/-W (ft)	Between Centres (ft)	Between Ellipses (ft)	Minimum Separation (ft)	Separation Factor	Warning	
0.0	0.0	0.0	0.0	0.0	0.0	78.46	8.0	39.3	40.2					
100.0	100.0	97.0	97.0	0.1	0.1	78.46	8.0	39.3	40.1	39.8	0.22	180.954		
200.0	200.0	197.0	197.0	0.3	0.3	78.46	8.0	39.3	40.1	39.4	0.67	60.015		
300.0	300.0	297.0	297.0	0.6	0.6	78.46	8.0	39.3	40.1	38.9	1.12	35.864		
400.0	400.0	397.0	397.0	0.8	0.8	78.46	8.0	39.3	40.1	38.5	1.57	25.573		
500.0	500.0	497.0	497.0	1.0	1.0	78.46	8.0	39.3	40.1	38.0	2.02	19.871		
600.0	600.0	597.0	597.0	1.2	1.2	78.46	8.0	39.3	40.1	37.6	2.47	16.248		
700.0	700.0	697.0	697.0	1.5	1.5	78.46	8.0	39.3	40.1	37.1	2.92	13.743		
800.0	800.0	797.0	797.0	1.7	1.7	78.46	8.0	39.3	40.1	36.7	3.36	11.907 CC, ES		
900.0	900.0	897.0	897.0	1.9	1.9	-132.68	8.0	39.3	41.2	37.4	3.79	10.885		
1,000.0	999.8	996.8	996.8	2.1	2.1	-137.54	8.0	39.3	44.9	40.7	4.19	10.722		
1,100.0	1,099.5	1,096.5	1,096.5	2.3	2.4	-143.99	8.0	39.3	51.7	47.1	4.60	11.232		
1,200.0	1,198.9	1,195.9	1,195.9	2.5	2.6	-149.79	8.0	39.3	60.5	55.4	5.03	12.025		
1,300.0	1,298.4	1,297.6	1,297.6	2.7	2.8	-154.50	7.4	37.7	68.1	62.6	5.44	12.513		
1,400.0	1,397.8	1,399.8	1,399.6	3.0	3.0	-159.09	5.4	32.8	72.7	66.8	5.84	12.439		
1,500.0	1,497.3	1,502.1	1,501.5	3.2	3.2	-164.15	2.1	24.5	74.4	68.1	6.25	11.889		
1,600.0	1,596.7	1,604.1	1,602.8	3.5	3.4	-170.25	-2.6	12.8	73.4	66.8	6.68	10.993		
1,700.0	1,696.2	1,704.8	1,702.3	3.8	3.7	-177.82	-8.3	-1.6	70.8	63.6	7.13	9.927		
1,800.0	1,795.6	1,804.3	1,800.5	4.1	4.0	173.98	-14.2	-16.3	69.0	61.4	7.61	9.068		
1,865.8	1,861.1	1,869.7	1,865.1	4.2	4.2	168.44	-18.1	-25.9	68.7	60.8	7.96	8.631		
1,900.0	1,895.1	1,903.8	1,898.7	4.3	4.3	165.55	-20.1	-31.0	68.8	60.7	8.15	8.442		
2,000.0	1,994.6	2,003.2	1,996.9	4.6	4.6	157.24	-26.0	-45.7	70.1	61.3	8.74	8.016		
2,100.0	2,094.0	2,102.7	2,095.1	4.9	4.9	149.37	-31.8	-60.4	72.7	63.4	9.37	7.761		
2,200.0	2,193.5	2,202.2	2,193.3	5.2	5.2	142.19	-37.7	-75.1	76.7	66.7	10.03	7.644		
2,300.0	2,292.9	2,301.7	2,291.5	5.5	5.6	135.79	-43.6	-89.8	81.7	71.0	10.71	7.634 SF		
2,400.0	2,392.4	2,401.2	2,389.7	5.8	5.9	130.19	-49.5	-104.5	87.7	76.3	11.38	7.703		
2,500.0	2,491.8	2,500.6	2,488.0	6.1	6.2	125.34	-55.3	-119.2	94.3	82.3	12.05	7.828		
2,600.0	2,591.3	2,600.1	2,586.2	6.4	6.6	121.15	-61.2	-133.9	101.6	88.9	12.71	7.991		
2,700.0	2,690.8	2,699.6	2,684.4	6.7	6.9	117.53	-67.1	-148.6	109.3	96.0	13.37	8.178		
2,800.0	2,790.2	2,799.1	2,782.6	7.0	7.3	114.40	-73.0	-163.2	117.4	103.4	14.02	8.378		
2,900.0	2,889.7	2,898.6	2,880.8	7.2	7.7	111.67	-78.9	-177.9	125.8	111.2	14.66	8.586		
3,000.0	2,989.1	2,998.0	2,979.0	7.5	8.0	109.30	-84.7	-192.6	134.5	119.2	15.29	8.796		
3,100.0	3,088.6	3,097.5	3,077.2	7.8	8.4	107.21	-90.6	-207.3	143.3	127.4	15.92	9.004		
3,200.0	3,188.0	3,197.0	3,175.4	8.1	8.7	105.37	-96.5	-222.0	152.4	135.8	16.55	9.208		
3,300.0	3,287.5	3,296.5	3,273.7	8.4	9.1	103.73	-102.4	-236.7	161.5	144.4	17.17	9.407		
3,400.0	3,387.0	3,396.0	3,371.9	8.7	9.5	102.27	-108.3	-251.4	170.8	153.0	17.79	9.601		
3,500.0	3,486.4	3,495.4	3,470.1	9.0	9.8	100.96	-114.1	-266.1	180.2	161.8	18.41	9.787		
3,600.0	3,585.9	3,594.9	3,568.3	9.3	10.2	99.78	-120.0	-280.8	189.7	170.6	19.03	9.966		
3,700.0	3,685.3	3,694.4	3,666.5	9.6	10.6	98.72	-125.9	-295.5	199.2	179.5	19.65	10.139		
3,800.0	3,784.8	3,793.9	3,764.7	9.9	10.9	97.75	-131.8	-310.2	208.8	188.5	20.26	10.304		
3,900.0	3,884.2	3,893.4	3,862.9	10.2	11.3	96.86	-137.7	-324.9	218.4	197.6	20.88	10.463		
4,000.0	3,983.7	3,992.8	3,961.1	10.5	11.7	96.05	-143.5	-339.6	228.1	206.6	21.49	10.615		
4,100.0	4,083.2	4,092.3	4,059.3	10.8	12.1	95.31	-149.4	-354.3	237.9	215.8	22.11	10.761		
4,200.0	4,182.6	4,191.8	4,157.6	11.1	12.4	94.63	-155.3	-369.0	247.6	224.9	22.72	10.901		
4,300.0	4,282.1	4,291.3	4,255.8	11.4	12.8	94.00	-161.2	-383.7	257.5	234.1	23.33	11.034		
4,400.0	4,381.5	4,390.7	4,354.0	11.7	13.2	93.41	-167.0	-398.4	267.3	243.3	23.94	11.163		
4,500.0	4,481.0	4,490.2	4,452.2	12.0	13.6	92.87	-172.9	-413.1	277.2	252.6	24.56	11.286		
4,600.0	4,580.4	4,590.1	4,550.8	12.3	13.9	92.36	-178.8	-427.8	287.0	261.9	25.17	11.404		
4,700.0	4,679.9	4,689.1	4,655.8	12.6	14.2	92.20	-184.3	-441.5	295.7	270.0	25.72	11.498		
4,800.0	4,779.4	4,802.5	4,761.6	12.9	14.4	92.53	-188.3	-451.5	302.1	275.9	26.22	11.522		
4,900.0	4,879.3	4,909.1	4,868.0	13.1	14.7	92.76	-190.9	-457.9	306.2	279.6	26.62	11.503		
5,000.0	4,979.2	5,015.8	4,974.6	13.2	14.8	92.84	-191.9	-460.6	308.0	281.0	26.96	11.421		

CC - Min centre to center distance or convergent point, SF - min separation factor, ES - min ellipse separation

Company:	Synergy Resources	Local Co-ordinate Reference:	Well SRC Kelly Farms 22-4-3NHZ #2
Project:	SEC.4-T5N-R66W	TVD Reference:	WELL @ 4767.0ft (Original Well Elev)
Reference Site:	SRC Kelly Farms Pad Sec.4-T5N-R66W	MD Reference:	WELL @ 4767.0ft (Original Well Elev)
Site Error:	0.0ft	North Reference:	True
Reference Well:	SRC Kelly Farms 22-4-3NHZ #2	Survey Calculation Method:	Minimum Curvature
Well Error:	0.0ft	Output errors are at	2.00 sigma
Reference Wellbore	Wellbore #1	Database:	Landmark
Reference Design:	Plan #1 (5-20-13)	Offset TVD Reference:	Offset Datum

Offset Design													Offset Site Error:	0.0 ft
Survey Program: 0-MWD													Offset Well Error:	0.0 ft
Reference		Offset		Semi Major Axis			Distance							
Measured Depth (ft)	Vertical Depth (ft)	Measured Depth (ft)	Vertical Depth (ft)	Reference (ft)	Offset (ft)	Highside Toolface (°)	Offset Wellbore Centre +N/-S (ft)	+E/-W (ft)	Between Centres (ft)	Between Ellipses (ft)	Minimum Separation (ft)	Separation Factor	Warning	
5,100.0	5,079.2	5,117.4	5,076.2	13.4	15.0	-57.83	-192.0	-460.7	308.0	284.1	23.89	12.892		
5,200.0	5,179.2	5,217.4	5,176.2	13.6	15.1	-57.83	-192.0	-460.7	308.0	283.8	24.25	12.700		
5,300.0	5,279.2	5,317.4	5,276.2	13.7	15.3	-57.83	-192.0	-460.7	308.0	283.4	24.62	12.513		
5,400.0	5,379.2	5,417.4	5,376.2	13.9	15.4	-57.83	-192.0	-460.7	308.0	283.1	24.98	12.330		
5,500.0	5,479.2	5,517.4	5,476.2	14.0	15.6	-57.83	-192.0	-460.7	308.0	282.7	25.35	12.150		
5,600.0	5,579.2	5,617.4	5,576.2	14.2	15.7	-57.83	-192.0	-460.7	308.0	282.3	25.72	11.975		
5,700.0	5,679.2	5,717.4	5,676.2	14.3	15.9	-57.83	-192.0	-460.7	308.0	281.9	26.10	11.803		
5,800.0	5,779.2	5,817.4	5,776.2	14.5	16.1	-57.83	-192.0	-460.7	308.0	281.6	26.47	11.636		
5,900.0	5,879.2	5,917.4	5,876.2	14.7	16.2	-57.83	-192.0	-460.7	308.0	281.2	26.85	11.472		
6,000.0	5,979.2	6,017.4	5,976.2	14.8	16.4	-57.83	-192.0	-460.7	308.0	280.8	27.23	11.311		
6,100.0	6,079.2	6,117.4	6,076.2	15.0	16.6	-57.83	-192.0	-460.7	308.0	280.4	27.62	11.155		
6,200.0	6,179.2	6,217.4	6,176.2	15.2	16.7	-57.83	-192.0	-460.7	308.0	280.0	28.00	11.002		
6,300.0	6,279.2	6,317.4	6,276.2	15.3	16.9	-57.83	-192.0	-460.7	308.0	279.7	28.39	10.852		
6,342.3	6,321.5	6,359.7	6,318.5	15.4	17.0	-147.87	-192.0	-460.7	308.4	277.1	31.37	9.832		
6,400.0	6,379.2	6,408.5	6,367.4	15.5	17.1	-147.88	-192.0	-461.1	309.4	277.9	31.52	9.814		
6,500.0	6,478.4	6,479.0	6,437.6	15.6	17.2	-148.47	-191.7	-466.9	327.0	295.6	31.42	10.409		
6,600.0	6,574.8	6,550.0	6,507.4	15.7	17.5	-149.56	-191.2	-479.7	364.8	333.8	30.93	11.794		
6,700.0	6,666.8	6,600.0	6,555.6	15.8	17.7	-149.57	-190.7	-492.8	420.5	390.4	30.13	13.956		
6,800.0	6,752.4	6,635.2	6,589.0	15.8	17.9	-147.79	-190.3	-504.0	491.5	462.2	29.26	16.797		
6,900.0	6,829.9	6,664.1	6,616.0	15.9	18.1	-143.76	-189.9	-514.4	574.1	545.4	28.70	20.002		
7,000.0	6,898.0	6,682.6	6,632.9	15.9	18.2	-134.84	-189.6	-521.7	664.8	635.4	29.37	22.633		
7,100.0	6,955.2	6,700.0	6,648.8	16.2	18.3	-117.74	-189.3	-528.9	760.4	728.1	32.26	23.569		
7,200.0	7,000.4	6,700.0	6,648.8	17.3	18.3	-82.25	-189.3	-528.9	858.0	823.4	34.62	24.787		
7,300.0	7,032.8	6,700.0	6,648.8	18.7	18.3	-48.68	-189.3	-528.9	955.8	927.2	28.63	33.385		

Company:	Synergy Resources	Local Co-ordinate Reference:	Well SRC Kelly Farms 22-4-3NHZ #2
Project:	SEC.4-T5N-R66W	TVD Reference:	WELL @ 4767.0ft (Original Well Elev)
Reference Site:	SRC Kelly Farms Pad Sec.4-T5N-R66W	MD Reference:	WELL @ 4767.0ft (Original Well Elev)
Site Error:	0.0ft	North Reference:	True
Reference Well:	SRC Kelly Farms 22-4-3NHZ #2	Survey Calculation Method:	Minimum Curvature
Well Error:	0.0ft	Output errors are at	2.00 sigma
Reference Wellbore	Wellbore #1	Database:	Landmark
Reference Design:	Plan #1 (5-20-13)	Offset TVD Reference:	Offset Datum

Reference Depths are relative to WELL @ 4767.0ft (Original Well Elev) Coordinates are relative to: SRC Kelly Farms 22-4-3NHZ #2
 Offset Depths are relative to Offset Datum Coordinate System is US State Plane 1983, Colorado Northern Zone
 Central Meridian is -105.500000 ° Grid Convergence at Surface is: 0.46°



Company:	Synergy Resources	Local Co-ordinate Reference:	Well SRC Kelly Farms 22-4-3NHZ #2
Project:	SEC.4-T5N-R66W	TVD Reference:	WELL @ 4767.0ft (Original Well Elev)
Reference Site:	SRC Kelly Farms Pad Sec.4-T5N-R66W	MD Reference:	WELL @ 4767.0ft (Original Well Elev)
Site Error:	0.0ft	North Reference:	True
Reference Well:	SRC Kelly Farms 22-4-3NHZ #2	Survey Calculation Method:	Minimum Curvature
Well Error:	0.0ft	Output errors are at	2.00 sigma
Reference Wellbore	Wellbore #1	Database:	Landmark
Reference Design:	Plan #1 (5-20-13)	Offset TVD Reference:	Offset Datum

Reference Depths are relative to WELL @ 4767.0ft (Original Well Elev) Coordinates are relative to: SRC Kelly Farms 22-4-3NHZ #2
Offset Depths are relative to Offset Datum Coordinate System is US State Plane 1983, Colorado Northern Zone
Central Meridian is -105.500000 ° Grid Convergence at Surface is: 0.46°

