

Synergy Resources

Well Name: **SRC Kelly Farms 22-4-3CHZ**

Surface Location: SRC Kelly Farms Pad Sec.4-T5N-R66W
North American Datum 1983 , US State Plane 1983 , Colorado Northern Zone

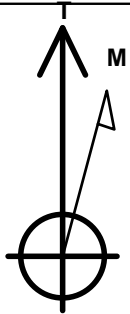
Ground Elevation: 4753.0

+N/-S	+E/-W	Northing	Easting	Latitude	Longitude	Slot
0.0	0.0	1400891.56	3199103.54	40.431645	-104.784771	

Original Well Elev WELL @ 4766.0ft (Original Well Elev)

WELLBORE TARGET DETAILS

Name	TVD	+N/-S	+E/-W	Shape
SHL 2086'FNL & 2317'FWL, Sec. 4	1.0	0.0	0.0	Point
BHL 1850'FNL & 2127'FWL, Sec. 3	7222.0	237.0	5173.3	Point



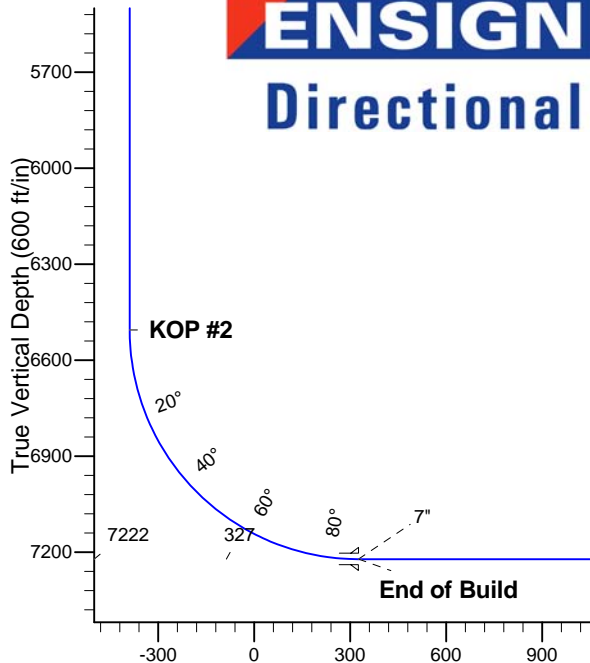
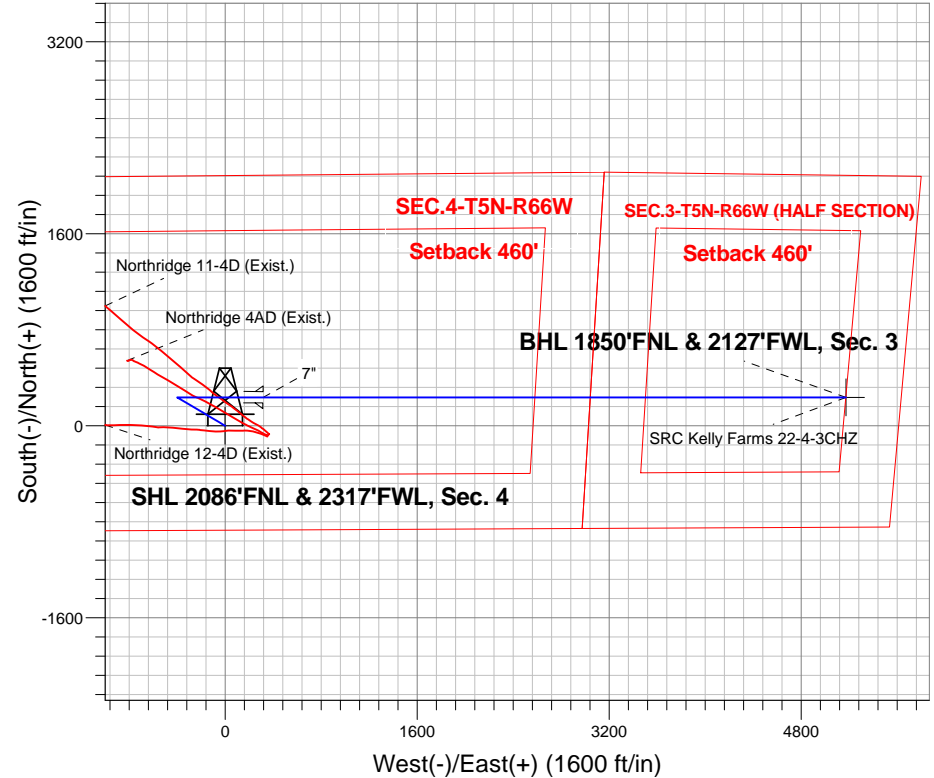
Azimuths to True North
Magnetic North: 8.62°

Magnetic Field
Strength: 52943.1srT
Dip Angle: 67.01°
Date: 5/20/2013
Model: IGRF2010

SRC Kelly Farms Pad Sec.4-T5N-R66W
SRC Kelly Farms 22-4-3CHZ
Plan #1 (5-20-13)
11:58, May 29 2013

ANNOTATIONS

TVD	MD	Annotation
800.0	800.0	KOP
6505.8	6532.9	KOP #2
7222.0	7657.9	End of Build



SECTION DETAILS

Sec	MD	Inc	Azi	TVD	+N/-S	+E/-W	DLeg	TFace	VSec	Target
1	0.0	0.00	0.00	0.0	0.0	0.0	0.00	0.00	0.0	
2	800.0	0.00	0.00	800.0	0.0	0.0	0.00	0.00	0.0	
3	1143.8	6.88	300.65	1143.0	10.5	-17.7	2.00	300.65	-17.2	
4	4683.3	6.88	300.65	4657.0	226.5	-382.3	0.00	0.00	-371.5	
5	5027.1	0.00	0.00	5000.0	237.0	-400.0	2.00	180.00	-388.7	
6	6532.9	0.00	0.00	6505.8	237.0	-400.0	0.00	0.00	-388.7	
7	7657.9	90.00	90.00	7222.0	237.0	316.2	8.00	90.00	326.7	
8	12515.0	90.00	90.00	7222.0	237.0	5173.3	0.00	0.00	5178.7	BHL 1850'FNL & 2127'FWL, Sec. 3

BHL 1850'FNL & 2127'FWL, Sec. 3

Vertical Section at 87.38° (600 ft/in)



Synergy Resources

SEC.4-T5N-R66W

SRC Kelly Farms Pad Sec.4-T5N-R66W

SRC Kelly Farms 22-4-3CHZ

Wellbore #1

Plan: Plan #1 (5-20-13)

Standard Planning Report

29 May, 2013

Plan Sections										
Measured Depth (ft)	Inclination (°)	Azimuth (°)	Vertical Depth (ft)	+N/-S (ft)	+E/-W (ft)	Dogleg Rate (°/100ft)	Build Rate (°/100ft)	Turn Rate (°/100ft)	TFO (°)	Target
0.0	0.00	0.00	0.0	0.0	0.0	0.00	0.00	0.00	0.00	
800.0	0.00	0.00	800.0	0.0	0.0	0.00	0.00	0.00	0.00	
1,143.8	6.88	300.65	1,143.0	10.5	-17.7	2.00	2.00	0.00	300.65	
4,683.3	6.88	300.65	4,657.0	226.5	-382.3	0.00	0.00	0.00	0.00	
5,027.1	0.00	0.00	5,000.0	237.0	-400.0	2.00	-2.00	0.00	180.00	
6,532.9	0.00	0.00	6,505.8	237.0	-400.0	0.00	0.00	0.00	0.00	
7,657.9	90.00	90.00	7,222.0	237.0	316.2	8.00	8.00	0.00	90.00	
12,515.0	90.00	90.00	7,222.0	237.0	5,173.3	0.00	0.00	0.00	0.00	BHL 1850'FNL & 21

Database:	Landmark	Local Co-ordinate Reference:	Well SRC Kelly Farms 22-4-3CHZ
Company:	Synergy Resources	TVD Reference:	WELL @ 4766.0ft (Original Well Elev)
Project:	SEC.4-T5N-R66W	MD Reference:	WELL @ 4766.0ft (Original Well Elev)
Site:	SRC Kelly Farms Pad Sec.4-T5N-R66W	North Reference:	True
Well:	SRC Kelly Farms 22-4-3CHZ	Survey Calculation Method:	Minimum Curvature
Wellbore:	Wellbore #1		
Design:	Plan #1 (5-20-13)		

Planned Survey									
Measured Depth (ft)	Inclination (°)	Azimuth (°)	Vertical Depth (ft)	+N/-S (ft)	+E/-W (ft)	Vertical Section (ft)	Dogleg Rate (°/100ft)	Build Rate (°/100ft)	Turn Rate (°/100ft)
0.0	0.00	0.00	0.0	0.0	0.0	0.0	0.00	0.00	0.00
1.0	0.00	0.00	1.0	0.0	0.0	0.0	0.00	0.00	0.00
SHL 2086'FNL & 2317'FWL, Sec. 4									
100.0	0.00	0.00	100.0	0.0	0.0	0.0	0.00	0.00	0.00
200.0	0.00	0.00	200.0	0.0	0.0	0.0	0.00	0.00	0.00
300.0	0.00	0.00	300.0	0.0	0.0	0.0	0.00	0.00	0.00
400.0	0.00	0.00	400.0	0.0	0.0	0.0	0.00	0.00	0.00
500.0	0.00	0.00	500.0	0.0	0.0	0.0	0.00	0.00	0.00
600.0	0.00	0.00	600.0	0.0	0.0	0.0	0.00	0.00	0.00
700.0	0.00	0.00	700.0	0.0	0.0	0.0	0.00	0.00	0.00
800.0	0.00	0.00	800.0	0.0	0.0	0.0	0.00	0.00	0.00
KOP									
900.0	2.00	300.65	900.0	0.9	-1.5	-1.5	2.00	2.00	0.00
1,000.0	4.00	300.65	999.8	3.6	-6.0	-5.8	2.00	2.00	0.00
1,100.0	6.00	300.65	1,099.5	8.0	-13.5	-13.1	2.00	2.00	0.00
1,143.8	6.88	300.65	1,143.0	10.5	-17.7	-17.2	2.00	2.00	0.00
1,200.0	6.88	300.65	1,198.8	13.9	-23.5	-22.9	0.00	0.00	0.00
1,300.0	6.88	300.65	1,298.1	20.0	-33.8	-32.9	0.00	0.00	0.00
1,400.0	6.88	300.65	1,397.3	26.1	-44.1	-42.9	0.00	0.00	0.00
1,500.0	6.88	300.65	1,496.6	32.2	-54.4	-52.9	0.00	0.00	0.00
1,600.0	6.88	300.65	1,595.9	38.3	-64.7	-62.9	0.00	0.00	0.00
1,700.0	6.88	300.65	1,695.2	44.4	-75.0	-72.9	0.00	0.00	0.00
1,800.0	6.88	300.65	1,794.5	50.5	-85.3	-82.9	0.00	0.00	0.00
1,900.0	6.88	300.65	1,893.7	56.6	-95.6	-92.9	0.00	0.00	0.00
2,000.0	6.88	300.65	1,993.0	62.8	-105.9	-102.9	0.00	0.00	0.00
2,100.0	6.88	300.65	2,092.3	68.9	-116.2	-112.9	0.00	0.00	0.00
2,200.0	6.88	300.65	2,191.6	75.0	-126.5	-122.9	0.00	0.00	0.00
2,300.0	6.88	300.65	2,290.9	81.1	-136.8	-133.0	0.00	0.00	0.00
2,400.0	6.88	300.65	2,390.1	87.2	-147.1	-143.0	0.00	0.00	0.00
2,500.0	6.88	300.65	2,489.4	93.3	-157.4	-153.0	0.00	0.00	0.00
2,600.0	6.88	300.65	2,588.7	99.4	-167.7	-163.0	0.00	0.00	0.00
2,700.0	6.88	300.65	2,688.0	105.5	-178.0	-173.0	0.00	0.00	0.00
2,800.0	6.88	300.65	2,787.3	111.6	-188.3	-183.0	0.00	0.00	0.00
2,900.0	6.88	300.65	2,886.5	117.7	-198.6	-193.0	0.00	0.00	0.00
3,000.0	6.88	300.65	2,985.8	123.8	-208.9	-203.0	0.00	0.00	0.00
3,100.0	6.88	300.65	3,085.1	129.9	-219.2	-213.0	0.00	0.00	0.00
3,200.0	6.88	300.65	3,184.4	136.0	-229.5	-223.0	0.00	0.00	0.00
3,300.0	6.88	300.65	3,283.7	142.1	-239.8	-233.0	0.00	0.00	0.00
3,400.0	6.88	300.65	3,382.9	148.2	-250.1	-243.1	0.00	0.00	0.00
3,500.0	6.88	300.65	3,482.2	154.3	-260.4	-253.1	0.00	0.00	0.00
3,600.0	6.88	300.65	3,581.5	160.4	-270.7	-263.1	0.00	0.00	0.00
3,700.0	6.88	300.65	3,680.8	166.5	-281.0	-273.1	0.00	0.00	0.00
3,800.0	6.88	300.65	3,780.1	172.6	-291.3	-283.1	0.00	0.00	0.00
3,900.0	6.88	300.65	3,879.4	178.7	-301.6	-293.1	0.00	0.00	0.00
4,000.0	6.88	300.65	3,978.6	184.8	-311.9	-303.1	0.00	0.00	0.00
4,100.0	6.88	300.65	4,077.9	190.9	-322.2	-313.1	0.00	0.00	0.00
4,200.0	6.88	300.65	4,177.2	197.0	-332.5	-323.1	0.00	0.00	0.00
4,300.0	6.88	300.65	4,276.5	203.1	-342.8	-333.1	0.00	0.00	0.00
4,400.0	6.88	300.65	4,375.8	209.2	-353.1	-343.2	0.00	0.00	0.00
4,500.0	6.88	300.65	4,475.0	215.3	-363.4	-353.2	0.00	0.00	0.00
4,600.0	6.88	300.65	4,574.3	221.4	-373.7	-363.2	0.00	0.00	0.00
4,683.3	6.88	300.65	4,657.0	226.5	-382.3	-371.5	0.00	0.00	0.00
4,700.0	6.54	300.65	4,673.6	227.5	-384.0	-373.1	2.00	-2.00	0.00
4,800.0	4.54	300.65	4,773.1	232.4	-392.3	-381.2	2.00	-2.00	0.00

Database: Landmark
Company: Synergy Resources
Project: SEC.4-T5N-R66W
Site: SRC Kelly Farms Pad Sec.4-T5N-R66W
Well: SRC Kelly Farms 22-4-3CHZ
Wellbore: Wellbore #1
Design: Plan #1 (5-20-13)

Local Co-ordinate Reference: Well SRC Kelly Farms 22-4-3CHZ
TVD Reference: WELL @ 4766.0ft (Original Well Elev)
MD Reference: WELL @ 4766.0ft (Original Well Elev)
North Reference: True
Survey Calculation Method: Minimum Curvature

Planned Survey									
Measured Depth (ft)	Inclination (°)	Azimuth (°)	Vertical Depth (ft)	+N/-S (ft)	+E/-W (ft)	Vertical Section (ft)	Dogleg Rate (°/100ft)	Build Rate (°/100ft)	Turn Rate (°/100ft)
4,900.0	2.54	300.65	4,872.9	235.6	-397.6	-386.4	2.00	-2.00	0.00
5,000.0	0.54	300.65	4,972.9	236.9	-399.9	-388.6	2.00	-2.00	0.00
5,027.1	0.00	0.00	5,000.0	237.0	-400.0	-388.7	2.00	-2.00	0.00
5,100.0	0.00	0.00	5,072.9	237.0	-400.0	-388.7	0.00	0.00	0.00
5,200.0	0.00	0.00	5,172.9	237.0	-400.0	-388.7	0.00	0.00	0.00
5,300.0	0.00	0.00	5,272.9	237.0	-400.0	-388.7	0.00	0.00	0.00
5,400.0	0.00	0.00	5,372.9	237.0	-400.0	-388.7	0.00	0.00	0.00
5,500.0	0.00	0.00	5,472.9	237.0	-400.0	-388.7	0.00	0.00	0.00
5,600.0	0.00	0.00	5,572.9	237.0	-400.0	-388.7	0.00	0.00	0.00
5,700.0	0.00	0.00	5,672.9	237.0	-400.0	-388.7	0.00	0.00	0.00
5,800.0	0.00	0.00	5,772.9	237.0	-400.0	-388.7	0.00	0.00	0.00
5,900.0	0.00	0.00	5,872.9	237.0	-400.0	-388.7	0.00	0.00	0.00
6,000.0	0.00	0.00	5,972.9	237.0	-400.0	-388.7	0.00	0.00	0.00
6,100.0	0.00	0.00	6,072.9	237.0	-400.0	-388.7	0.00	0.00	0.00
6,200.0	0.00	0.00	6,172.9	237.0	-400.0	-388.7	0.00	0.00	0.00
6,300.0	0.00	0.00	6,272.9	237.0	-400.0	-388.7	0.00	0.00	0.00
6,400.0	0.00	0.00	6,372.9	237.0	-400.0	-388.7	0.00	0.00	0.00
6,500.0	0.00	0.00	6,472.9	237.0	-400.0	-388.7	0.00	0.00	0.00
6,532.9	0.00	0.00	6,505.8	237.0	-400.0	-388.7	0.00	0.00	0.00
KOP #2									
6,600.0	5.37	90.00	6,572.8	237.0	-396.9	-385.6	8.00	8.00	0.00
6,700.0	13.37	90.00	6,671.4	237.0	-380.6	-369.4	8.00	8.00	0.00
6,800.0	21.37	90.00	6,766.7	237.0	-350.8	-339.6	8.00	8.00	0.00
6,900.0	29.37	90.00	6,857.0	237.0	-308.0	-296.8	8.00	8.00	0.00
7,000.0	37.37	90.00	6,940.5	237.0	-253.0	-241.9	8.00	8.00	0.00
7,100.0	45.37	90.00	7,015.5	237.0	-187.0	-175.9	8.00	8.00	0.00
7,200.0	53.37	90.00	7,080.5	237.0	-111.1	-100.2	8.00	8.00	0.00
7,300.0	61.37	90.00	7,134.4	237.0	-27.0	-16.1	8.00	8.00	0.00
7,400.0	69.37	90.00	7,176.1	237.0	63.8	74.6	8.00	8.00	0.00
7,500.0	77.37	90.00	7,204.7	237.0	159.6	170.2	8.00	8.00	0.00
7,600.0	85.37	90.00	7,219.7	237.0	258.4	268.9	8.00	8.00	0.00
7,657.9	90.00	90.00	7,222.0	237.0	316.2	326.7	8.00	8.00	0.00
End of Build - 7"									
7,700.0	90.00	90.00	7,222.0	237.0	358.3	368.8	0.00	0.00	0.00
7,800.0	90.00	90.00	7,222.0	237.0	458.3	468.7	0.00	0.00	0.00
7,900.0	90.00	90.00	7,222.0	237.0	558.3	568.6	0.00	0.00	0.00
8,000.0	90.00	90.00	7,222.0	237.0	658.3	668.4	0.00	0.00	0.00
8,100.0	90.00	90.00	7,222.0	237.0	758.3	768.3	0.00	0.00	0.00
8,200.0	90.00	90.00	7,222.0	237.0	858.3	868.2	0.00	0.00	0.00
8,300.0	90.00	90.00	7,222.0	237.0	958.3	968.1	0.00	0.00	0.00
8,400.0	90.00	90.00	7,222.0	237.0	1,058.3	1,068.0	0.00	0.00	0.00
8,500.0	90.00	90.00	7,222.0	237.0	1,158.3	1,167.9	0.00	0.00	0.00
8,600.0	90.00	90.00	7,222.0	237.0	1,258.3	1,267.8	0.00	0.00	0.00
8,700.0	90.00	90.00	7,222.0	237.0	1,358.3	1,367.7	0.00	0.00	0.00
8,800.0	90.00	90.00	7,222.0	237.0	1,458.3	1,467.6	0.00	0.00	0.00
8,900.0	90.00	90.00	7,222.0	237.0	1,558.3	1,567.5	0.00	0.00	0.00
9,000.0	90.00	90.00	7,222.0	237.0	1,658.3	1,667.4	0.00	0.00	0.00
9,100.0	90.00	90.00	7,222.0	237.0	1,758.3	1,767.3	0.00	0.00	0.00
9,200.0	90.00	90.00	7,222.0	237.0	1,858.3	1,867.2	0.00	0.00	0.00
9,300.0	90.00	90.00	7,222.0	237.0	1,958.3	1,967.1	0.00	0.00	0.00
9,400.0	90.00	90.00	7,222.0	237.0	2,058.3	2,067.0	0.00	0.00	0.00
9,500.0	90.00	90.00	7,222.0	237.0	2,158.3	2,166.9	0.00	0.00	0.00
9,600.0	90.00	90.00	7,222.0	237.0	2,258.3	2,266.8	0.00	0.00	0.00
9,700.0	90.00	90.00	7,222.0	237.0	2,358.3	2,366.7	0.00	0.00	0.00

Database:	Landmark	Local Co-ordinate Reference:	Well SRC Kelly Farms 22-4-3CHZ
Company:	Synergy Resources	TVD Reference:	WELL @ 4766.0ft (Original Well Elev)
Project:	SEC.4-T5N-R66W	MD Reference:	WELL @ 4766.0ft (Original Well Elev)
Site:	SRC Kelly Farms Pad Sec.4-T5N-R66W	North Reference:	True
Well:	SRC Kelly Farms 22-4-3CHZ	Survey Calculation Method:	Minimum Curvature
Wellbore:	Wellbore #1		
Design:	Plan #1 (5-20-13)		

Planned Survey										
Measured Depth (ft)	Inclination (°)	Azimuth (°)	Vertical Depth (ft)	+N/-S (ft)	+E/-W (ft)	Vertical Section (ft)	Dogleg Rate (°/100ft)	Build Rate (°/100ft)	Turn Rate (°/100ft)	
9,800.0	90.00	90.00	7,222.0	237.0	2,458.3	2,466.6	0.00	0.00	0.00	
9,900.0	90.00	90.00	7,222.0	237.0	2,558.3	2,566.5	0.00	0.00	0.00	
10,000.0	90.00	90.00	7,222.0	237.0	2,658.3	2,666.4	0.00	0.00	0.00	
10,100.0	90.00	90.00	7,222.0	237.0	2,758.3	2,766.2	0.00	0.00	0.00	
10,200.0	90.00	90.00	7,222.0	237.0	2,858.3	2,866.1	0.00	0.00	0.00	
10,300.0	90.00	90.00	7,222.0	237.0	2,958.3	2,966.0	0.00	0.00	0.00	
10,400.0	90.00	90.00	7,222.0	237.0	3,058.3	3,065.9	0.00	0.00	0.00	
10,500.0	90.00	90.00	7,222.0	237.0	3,158.3	3,165.8	0.00	0.00	0.00	
10,600.0	90.00	90.00	7,222.0	237.0	3,258.3	3,265.7	0.00	0.00	0.00	
10,700.0	90.00	90.00	7,222.0	237.0	3,358.3	3,365.6	0.00	0.00	0.00	
10,800.0	90.00	90.00	7,222.0	237.0	3,458.3	3,465.5	0.00	0.00	0.00	
10,900.0	90.00	90.00	7,222.0	237.0	3,558.3	3,565.4	0.00	0.00	0.00	
11,000.0	90.00	90.00	7,222.0	237.0	3,658.3	3,665.3	0.00	0.00	0.00	
11,100.0	90.00	90.00	7,222.0	237.0	3,758.3	3,765.2	0.00	0.00	0.00	
11,200.0	90.00	90.00	7,222.0	237.0	3,858.3	3,865.1	0.00	0.00	0.00	
11,300.0	90.00	90.00	7,222.0	237.0	3,958.3	3,965.0	0.00	0.00	0.00	
11,400.0	90.00	90.00	7,222.0	237.0	4,058.3	4,064.9	0.00	0.00	0.00	
11,500.0	90.00	90.00	7,222.0	237.0	4,158.3	4,164.8	0.00	0.00	0.00	
11,600.0	90.00	90.00	7,222.0	237.0	4,258.3	4,264.7	0.00	0.00	0.00	
11,700.0	90.00	90.00	7,222.0	237.0	4,358.3	4,364.6	0.00	0.00	0.00	
11,800.0	90.00	90.00	7,222.0	237.0	4,458.3	4,464.5	0.00	0.00	0.00	
11,900.0	90.00	90.00	7,222.0	237.0	4,558.3	4,564.4	0.00	0.00	0.00	
12,000.0	90.00	90.00	7,222.0	237.0	4,658.3	4,664.3	0.00	0.00	0.00	
12,100.0	90.00	90.00	7,222.0	237.0	4,758.3	4,764.2	0.00	0.00	0.00	
12,200.0	90.00	90.00	7,222.0	237.0	4,858.3	4,864.0	0.00	0.00	0.00	
12,300.0	90.00	90.00	7,222.0	237.0	4,958.3	4,963.9	0.00	0.00	0.00	
12,400.0	90.00	90.00	7,222.0	237.0	5,058.3	5,063.8	0.00	0.00	0.00	
12,500.0	90.00	90.00	7,222.0	237.0	5,158.3	5,163.7	0.00	0.00	0.00	
12,515.0	90.00	90.00	7,222.0	237.0	5,173.3	5,178.7	0.00	0.00	0.00	
BHL 1850'FNL & 2127'FWL, Sec. 3										

Targets									
Target Name	Dip Angle (°)	Dip Dir. (°)	TVD (ft)	+N/-S (ft)	+E/-W (ft)	Northing (ft)	Easting (ft)	Latitude	Longitude
- hit/miss target									
- Shape									
BHL 1850'FNL & 2127' - plan hits target center	0.00	0.00	7,222.0	237.0	5,173.3	1,401,170.26	3,204,274.55	40.432294	-104.766188
- Point									
SHL 2086'FNL & 2317' - plan hits target center	0.00	0.00	1.0	0.0	0.0	1,400,891.57	3,199,103.54	40.431645	-104.784771
- Point									

Casing Points					
Measured Depth (ft)	Vertical Depth (ft)	Name	Casing Diameter (")	Hole Diameter (")	
7,657.9	7,222.0	7"	7	7-1/2	

Database:	Landmark	Local Co-ordinate Reference:	Well SRC Kelly Farms 22-4-3CHZ
Company:	Synergy Resources	TVD Reference:	WELL @ 4766.0ft (Original Well Elev)
Project:	SEC.4-T5N-R66W	MD Reference:	WELL @ 4766.0ft (Original Well Elev)
Site:	SRC Kelly Farms Pad Sec.4-T5N-R66W	North Reference:	True
Well:	SRC Kelly Farms 22-4-3CHZ	Survey Calculation Method:	Minimum Curvature
Wellbore:	Wellbore #1		
Design:	Plan #1 (5-20-13)		

Plan Annotations				
Measured Depth (ft)	Vertical Depth (ft)	Local Coordinates		Comment
		+N/-S (ft)	+E/-W (ft)	
800.0	800.0	0.0	0.0	KOP
6,532.9	6,505.8	237.0	-400.0	KOP #2
7,657.9	7,222.0	237.0	316.2	End of Build



Synergy Resources

SEC.4-T5N-R66W

SRC Kelly Farms Pad Sec.4-T5N-R66W

SRC Kelly Farms 22-4-3CHZ

Wellbore #1

Plan #1 (5-20-13)

Anticollision Report

29 May, 2013

Company:	Synergy Resources	Local Co-ordinate Reference:	Well SRC Kelly Farms 22-4-3CHZ
Project:	SEC.4-T5N-R66W	TVD Reference:	WELL @ 4766.0ft (Original Well Elev)
Reference Site:	SRC Kelly Farms Pad Sec.4-T5N-R66W	MD Reference:	WELL @ 4766.0ft (Original Well Elev)
Site Error:	0.0ft	North Reference:	True
Reference Well:	SRC Kelly Farms 22-4-3CHZ	Survey Calculation Method:	Minimum Curvature
Well Error:	0.0ft	Output errors are at	2.00 sigma
Reference Wellbore	Wellbore #1	Database:	Landmark
Reference Design:	Plan #1 (5-20-13)	Offset TVD Reference:	Offset Datum

Reference	Plan #1 (5-20-13)		
Filter type:	NO GLOBAL FILTER: Using user defined selection & filtering criteria		
Interpolation Method:	MD Interval 100.0ft	Error Model:	ISCWSA
Depth Range:	Unlimited	Scan Method:	Closest Approach 3D
Results Limited by:	Maximum center-center distance of 1,000.0ft	Error Surface:	Elliptical Conic
Warning Levels Evaluated at:	2.00 Sigma		

Survey Tool Program	Date 5/29/2013			
From (ft)	To (ft)	Survey (Wellbore)	Tool Name	Description
0.0	12,515.0	Plan #1 (5-20-13) (Wellbore #1)	MWD	MWD - Standard

Summary						
Site Name	Reference Measured Depth (ft)	Offset Measured Depth (ft)	Distance Between Centres (ft)	Distance Between Ellipses (ft)	Separation Factor	Warning
Northridge Pad Sec.4-T5N-R66W						
Northridge 11-4D (Exist.) - Wellbore #1 - Wellbore #1	1,855.8	1,914.0	169.9	156.1	12.292	CC, ES
Northridge 11-4D (Exist.) - Wellbore #1 - Wellbore #1	2,000.0	2,047.3	178.1	162.9	11.699	SF
Northridge 12-4D (Exist.) - Wellbore #1 - Wellbore #1	2,389.5	2,444.9	130.1	113.8	7.976	CC
Northridge 12-4D (Exist.) - Wellbore #1 - Wellbore #1	2,400.0	2,455.2	130.2	113.7	7.917	ES
Northridge 12-4D (Exist.) - Wellbore #1 - Wellbore #1	2,500.0	2,551.0	133.0	115.4	7.587	SF
Northridge 4AD (Exist.) - Wellbore #1 - Wellbore #1	3,491.1	3,551.5	85.3	61.5	3.589	CC
Northridge 4AD (Exist.) - Wellbore #1 - Wellbore #1	3,500.0	3,560.2	85.3	61.5	3.584	ES, SF
SRC Kelly Farms Pad Sec.4-T5N-R66W						
SRC Kelly Farms 21-4-3NHZ #2 - Wellbore #1 - Plan #1	800.0	800.0	22.7	19.3	6.724	CC, ES
SRC Kelly Farms 21-4-3NHZ #2 - Wellbore #1 - Plan #1	900.0	900.0	23.9	20.1	6.257	SF
SRC Kelly Farms 22-4-3NHZ - Wellbore #1 - Plan #1 (5-	800.0	800.0	45.0	41.6	13.338	CC, ES
SRC Kelly Farms 22-4-3NHZ - Wellbore #1 - Plan #1 (5-	12,500.0	12,154.4	371.7	105.4	1.396	Level 3, SF
SRC Kelly Farms A-4-3NHZ - Wellbore #1 - Plan #1 (5-2	366.3	367.3	45.0	43.5	31.574	CC
SRC Kelly Farms A-4-3NHZ - Wellbore #1 - Plan #1 (5-2	400.0	401.0	45.0	43.4	28.542	ES
SRC Kelly Farms A-4-3NHZ - Wellbore #1 - Plan #1 (5-2	12,515.0	12,374.3	370.0	96.8	1.354	Level 3, SF
SRC Northridge 32-4-5NHZ - Wellbore #1 - Plan #1 (5-21	800.0	799.0	60.2	56.8	17.858	CC, ES
SRC Northridge 32-4-5NHZ - Wellbore #1 - Plan #1 (5-21	7,150.4	7,373.9	94.9	58.4	2.599	SF
SRC Northridge C-4-5NHZ - Wellbore #1 - Plan #1 (5-21	800.0	799.0	46.0	42.6	13.641	CC, ES
SRC Northridge C-4-5NHZ - Wellbore #1 - Plan #1 (5-21	7,097.5	7,280.5	146.0	110.5	4.115	SF

Offset Design	Northridge Pad Sec.4-T5N-R66W - Northridge 11-4D (Exist.) - Wellbore #1 - Wellbore #1											Offset Site Error:	0.0ft
Survey Program:	147-MWD											Offset Well Error:	0.0ft
Reference	Offset	Semi Major Axis		Distance		Minimum		Separation		Warning			
Measured Depth (ft)	Vertical Depth (ft)	Measured Depth (ft)	Vertical Depth (ft)	Reference (ft)	Offset (ft)	Highside Toolface (°)	Offset Wellbore Centre +N/-S (ft)	+E/-W (ft)	Between Centres (ft)	Between Ellipses (ft)	Minimum Separation (ft)	Separation Factor	Warning
0.0	0.0	0.0	0.0	0.0	0.0	100.64	-68.5	364.4	371.0				
100.0	100.0	81.7	81.7	0.1	0.1	100.70	-68.9	364.9	371.4	371.2	0.21	1,798.188	
200.0	200.0	182.8	182.8	0.3	0.2	100.88	-70.5	366.6	373.4	372.8	0.58	645.705	
300.0	300.0	299.3	299.2	0.6	0.5	100.86	-70.1	365.4	372.2	371.2	1.04	356.976	
400.0	400.0	411.6	411.3	0.8	0.7	100.33	-65.7	360.4	367.1	365.6	1.52	241.188	
500.0	500.0	529.5	528.5	1.0	1.0	99.14	-56.5	351.2	358.1	356.0	2.04	175.195	
600.0	600.0	640.9	638.5	1.2	1.4	97.50	-44.5	338.1	344.8	342.3	2.56	134.565	
700.0	700.0	742.1	738.0	1.5	1.8	95.81	-32.9	323.5	329.1	326.1	3.05	107.861	

CC - Min centre to center distance or covergent point, SF - min separation factor, ES - min ellipse separation

Northridge Pad Sec.4-T5N-R66W - Northridge 11-4D (Exist.) - Wellbore #1 - Wellbore #1													Offset Site Error:	0.0 ft
Survey Program: 147-MWD													Offset Well Error:	0.0 ft
Reference		Offset		Semi Major Axis			Distance							
Measured Depth	Vertical Depth	Measured Depth	Vertical Depth	Reference	Offset	Highside Toolface	Offset Wellbore Centre		Between Centres	Between Ellipses	Minimum Separation	Separation Factor	Warning	
(ft)	(ft)	(ft)	(ft)	(ft)	(ft)	(°)	+N/-S (ft)	+E/-W (ft)	(ft)	(ft)	(ft)			
800.0	800.0	840.0	834.3	1.7	2.1	94.08	-22.1	310.0	314.3	310.8	3.51	89.589		
900.0	900.0	949.7	941.7	1.9	2.5	151.12	-7.4	292.9	299.5	295.4	4.13	72.556		
1,000.0	999.8	1,063.7	1,052.4	2.1	3.1	149.24	6.2	269.6	283.3	278.5	4.73	59.870		
1,100.0	1,099.5	1,169.8	1,154.3	2.4	3.6	147.41	19.9	243.4	266.0	260.6	5.35	49.696		
1,200.0	1,198.8	1,274.6	1,253.6	2.6	4.3	144.75	37.0	214.8	248.9	242.8	6.07	40.996		
1,300.0	1,298.1	1,373.9	1,346.7	2.9	5.0	141.00	56.2	186.0	231.1	224.2	6.90	33.488		
1,400.0	1,397.3	1,470.7	1,436.3	3.1	5.7	135.70	78.7	157.0	214.3	206.4	7.89	27.152		
1,500.0	1,496.6	1,568.8	1,526.3	3.4	6.4	128.96	103.2	126.9	199.3	190.3	9.06	22.009		
1,600.0	1,595.9	1,667.2	1,615.9	3.7	7.3	120.85	128.2	94.9	186.1	175.7	10.39	17.920		
1,700.0	1,695.2	1,763.1	1,702.7	4.0	8.1	111.54	153.6	62.6	176.8	165.0	11.79	14.999		
1,800.0	1,794.5	1,861.6	1,791.7	4.3	8.9	101.39	177.9	28.2	171.0	157.8	13.15	13.002		
1,855.8	1,849.9	1,914.0	1,838.9	4.5	9.4	95.70	190.9	9.5	169.9	156.1	13.82	12.292 CC, ES		
1,900.0	1,893.7	1,954.5	1,875.2	4.6	9.7	91.21	201.2	-5.0	170.7	156.4	14.31	11.927		
2,000.0	1,993.0	2,047.3	1,958.4	4.9	10.5	81.19	225.9	-37.9	178.1	162.9	15.22	11.699 SF		
2,100.0	2,092.3	2,143.0	2,044.5	5.2	11.4	72.00	250.5	-71.8	190.2	174.4	15.88	11.982		
2,200.0	2,191.6	2,230.7	2,122.7	5.5	12.2	64.36	274.5	-103.5	208.5	192.2	16.32	12.775		
2,300.0	2,290.9	2,320.0	2,201.8	5.8	13.0	58.18	302.0	-134.3	233.7	217.0	16.69	14.002		
2,400.0	2,390.1	2,428.3	2,298.9	6.1	13.9	52.14	332.3	-171.5	258.5	241.5	16.98	15.222		
2,500.0	2,489.4	2,526.9	2,388.0	6.4	14.8	47.26	355.7	-206.6	281.2	264.0	17.24	16.317		
2,600.0	2,588.7	2,616.6	2,468.6	6.7	15.6	43.35	377.6	-239.4	306.7	289.2	17.50	17.524		
2,700.0	2,688.0	2,703.9	2,546.8	7.1	16.4	40.22	400.2	-270.9	334.5	316.7	17.80	18.799		
2,800.0	2,787.3	2,781.4	2,615.3	7.4	17.1	37.95	423.1	-299.1	366.8	348.7	18.12	20.241		
2,900.0	2,886.5	2,862.0	2,684.8	7.7	17.9	35.91	450.0	-329.6	404.0	385.5	18.49	21.847		
3,000.0	2,985.8	2,953.6	2,763.3	8.0	18.9	33.94	481.6	-364.8	443.0	424.1	18.88	23.468		
3,100.0	3,085.1	3,076.6	2,871.6	8.3	20.0	31.87	519.3	-409.1	477.4	458.1	19.31	24.722		
3,200.0	3,184.4	3,163.9	2,949.2	8.6	20.8	30.77	545.7	-438.9	510.9	491.2	19.74	25.879		
3,300.0	3,283.7	3,269.3	3,043.2	8.9	21.8	29.63	577.5	-474.6	544.5	524.3	20.23	26.917		
3,400.0	3,382.9	3,403.8	3,165.6	9.2	22.9	28.31	612.5	-517.9	573.6	552.9	20.76	27.633		
3,500.0	3,482.2	3,488.5	3,243.8	9.6	23.5	27.54	632.0	-544.0	599.6	578.4	21.20	28.280		
3,600.0	3,581.5	3,577.4	3,324.9	9.9	24.2	26.80	654.6	-572.5	628.2	606.5	21.66	28.997		
3,700.0	3,680.8	3,702.7	3,440.2	10.2	25.2	25.96	685.3	-610.7	655.5	633.3	22.22	29.495		
3,800.0	3,780.1	3,816.4	3,546.5	10.5	26.0	25.29	709.6	-642.9	678.7	655.9	22.74	29.838		
3,900.0	3,879.4	3,893.0	3,618.5	10.8	26.5	24.81	724.6	-664.4	700.7	677.6	23.17	30.240		
4,000.0	3,978.6	3,964.5	3,684.7	11.1	27.1	24.30	739.7	-686.6	726.1	702.5	23.60	30.761		
4,100.0	4,077.9	4,043.8	3,756.5	11.4	27.7	23.68	759.3	-714.2	756.2	732.2	24.06	31.430		
4,200.0	4,177.2	4,120.0	3,824.9	11.8	28.4	23.04	777.9	-741.9	787.5	763.0	24.51	32.135		
4,300.0	4,276.5	4,174.0	3,872.7	12.1	28.9	22.62	792.5	-762.5	822.4	797.5	24.91	33.020		
4,400.0	4,375.8	4,250.2	3,939.0	12.4	29.7	22.17	815.9	-791.7	860.2	834.8	25.39	33.885		
4,500.0	4,475.0	4,350.5	4,025.9	12.7	30.7	21.83	849.9	-828.7	899.6	873.7	25.97	34.645		
4,600.0	4,574.3	4,530.7	4,187.6	13.0	32.3	21.37	902.8	-887.7	931.8	905.0	26.77	34.809		
4,700.0	4,673.6	4,624.2	4,273.0	13.3	33.1	21.22	928.1	-916.1	961.4	934.1	27.30	35.219		
4,800.0	4,773.1	4,710.4	4,351.5	13.5	33.8	21.20	951.3	-943.3	993.7	966.1	27.68	35.904		

Company:	Synergy Resources	Local Co-ordinate Reference:	Well SRC Kelly Farms 22-4-3CHZ
Project:	SEC.4-T5N-R66W	TVD Reference:	WELL @ 4766.0ft (Original Well Elev)
Reference Site:	SRC Kelly Farms Pad Sec.4-T5N-R66W	MD Reference:	WELL @ 4766.0ft (Original Well Elev)
Site Error:	0.0ft	North Reference:	True
Reference Well:	SRC Kelly Farms 22-4-3CHZ	Survey Calculation Method:	Minimum Curvature
Well Error:	0.0ft	Output errors are at	2.00 sigma
Reference Wellbore	Wellbore #1	Database:	Landmark
Reference Design:	Plan #1 (5-20-13)	Offset TVD Reference:	Offset Datum

Offset Design													Offset Site Error:	0.0 ft
Survey Program: 182-MWD													Offset Well Error:	0.0 ft
Reference		Offset		Semi Major Axis			Distance							Warning
Measured Depth (ft)	Vertical Depth (ft)	Measured Depth (ft)	Vertical Depth (ft)	Reference (ft)	Offset (ft)	Highside Toolface (°)	Offset Wellbore Centre +N/-S (ft)	+E/-W (ft)	Between Centres (ft)	Between Ellipses (ft)	Minimum Separation (ft)	Separation Factor		
0.0	0.0	0.0	0.0	0.0	0.0	104.21	-89.3	352.4	363.8					
100.0	100.0	87.6	87.6	0.1	0.1	104.20	-89.2	352.5	363.6	363.4	0.21	1,723.953		
200.0	200.0	187.2	187.2	0.3	0.2	104.17	-89.1	352.7	363.8	363.2	0.55	658.686		
300.0	300.0	289.7	289.7	0.6	0.4	104.27	-89.7	352.6	363.8	362.8	0.99	369.033		
400.0	400.0	403.5	403.5	0.8	0.7	104.19	-88.6	350.4	361.8	360.3	1.45	249.680		
500.0	500.0	529.4	529.0	1.0	1.0	103.89	-84.5	341.5	354.1	352.2	1.97	179.598		
600.0	600.0	638.9	637.4	1.2	1.3	103.55	-79.0	327.7	340.6	338.2	2.49	136.614		
700.0	700.0	745.5	742.6	1.5	1.6	103.02	-72.2	312.0	324.9	321.8	3.04	106.993		
800.0	800.0	846.3	841.9	1.7	2.0	102.62	-66.2	295.6	307.7	304.1	3.57	86.204		
900.0	900.0	951.3	945.1	1.9	2.4	161.89	-60.5	277.1	290.9	287.1	3.86	75.310		
1,000.0	999.8	1,052.6	1,044.3	2.1	2.8	161.83	-53.7	257.7	275.7	271.3	4.32	63.800		
1,100.0	1,099.5	1,151.0	1,140.7	2.4	3.2	162.27	-48.5	238.4	263.6	258.8	4.76	55.348		
1,200.0	1,198.8	1,257.8	1,245.0	2.6	3.7	163.43	-44.5	215.8	253.2	247.9	5.24	48.286		
1,300.0	1,298.1	1,362.5	1,346.4	2.9	4.2	165.08	-41.5	190.1	239.9	234.2	5.75	41.746		
1,400.0	1,397.3	1,456.2	1,437.2	3.1	4.6	167.19	-40.6	166.7	227.2	221.0	6.22	36.546		
1,500.0	1,496.6	1,552.7	1,531.1	3.4	5.0	169.91	-41.7	144.8	217.6	210.8	6.71	32.427		
1,600.0	1,595.9	1,660.6	1,635.5	3.7	5.6	173.14	-41.3	117.4	205.3	198.0	7.30	28.142		
1,700.0	1,695.2	1,762.4	1,733.2	4.0	6.1	177.04	-41.3	88.9	191.6	183.7	7.95	24.108		
1,800.0	1,794.5	1,864.4	1,830.4	4.3	6.7	-178.20	-40.7	58.0	176.6	167.8	8.71	20.267		
1,900.0	1,893.7	1,960.2	1,921.2	4.6	7.3	-172.51	-40.7	27.6	161.9	152.3	9.59	16.874		
2,000.0	1,993.0	2,056.0	2,011.9	4.9	7.9	-164.90	-43.8	-3.0	151.3	140.6	10.71	14.125		
2,100.0	2,092.3	2,158.1	2,108.1	5.2	8.6	-155.41	-46.9	-37.1	142.9	130.8	12.13	11.778		
2,200.0	2,191.6	2,256.5	2,199.8	5.5	9.3	-144.70	-47.8	-72.8	135.5	121.8	13.68	9.906		
2,300.0	2,290.9	2,357.0	2,293.8	5.8	10.0	-133.56	-46.6	-108.4	131.7	116.5	15.17	8.677		
2,389.5	2,379.7	2,444.9	2,376.6	6.1	10.5	-124.48	-43.0	-137.8	130.1	113.8	16.32	7.976 CC		
2,400.0	2,390.1	2,455.2	2,386.2	6.1	10.6	-123.46	-42.6	-141.1	130.2	113.7	16.44	7.917 ES		
2,500.0	2,489.4	2,551.0	2,476.5	6.4	11.2	-113.66	-38.8	-173.1	133.0	115.4	17.53	7.587 SF		
2,600.0	2,588.7	2,648.9	2,568.2	6.7	11.9	-103.77	-35.0	-207.2	140.3	121.9	18.42	7.616		
2,700.0	2,688.0	2,739.5	2,652.1	7.1	12.6	-94.85	-31.9	-241.1	153.0	134.0	19.06	8.029		
2,800.0	2,787.3	2,830.2	2,734.4	7.4	13.4	-86.27	-29.8	-279.2	173.0	153.4	19.51	8.864		
2,900.0	2,886.5	2,926.6	2,821.6	7.7	14.2	-78.94	-28.1	-320.4	197.2	177.4	19.81	9.954		
3,000.0	2,985.8	3,025.0	2,911.1	8.0	15.0	-73.17	-25.0	-361.1	221.8	201.8	20.07	11.055		
3,100.0	3,085.1	3,115.1	2,992.4	8.3	15.8	-68.38	-20.4	-399.7	248.4	228.0	20.32	12.221		
3,200.0	3,184.4	3,217.6	3,085.3	8.6	16.7	-64.32	-16.5	-442.7	276.2	255.5	20.62	13.395		
3,300.0	3,283.7	3,318.0	3,177.7	8.9	17.4	-61.41	-12.6	-481.8	302.2	281.3	20.95	14.422		
3,400.0	3,382.9	3,411.6	3,264.3	9.2	18.1	-59.61	-11.2	-517.2	328.8	307.4	21.38	15.381		
3,500.0	3,482.2	3,535.7	3,381.5	9.6	18.9	-58.79	-13.9	-557.8	353.0	331.0	21.99	16.053		
3,600.0	3,581.5	3,655.0	3,496.8	9.9	19.5	-57.79	-9.5	-588.4	367.5	345.0	22.52	16.321		
3,700.0	3,680.8	3,751.5	3,590.3	10.2	20.0	-57.20	-6.3	-611.7	381.3	358.3	23.04	16.549		
3,800.0	3,780.1	3,836.2	3,671.9	10.5	20.5	-56.51	-3.0	-634.2	397.1	373.6	23.53	16.879		
3,900.0	3,879.4	3,919.7	3,751.3	10.8	21.0	-55.71	-0.1	-659.9	416.9	392.9	24.00	17.370		
4,000.0	3,978.6	4,004.4	3,831.1	11.1	21.6	-54.93	2.0	-688.2	439.8	415.3	24.49	17.959		
4,100.0	4,077.9	4,090.2	3,911.1	11.4	22.2	-54.16	3.4	-719.0	465.4	440.4	24.99	18.627		
4,200.0	4,177.2	4,185.3	3,999.2	11.8	23.0	-53.30	5.1	-754.9	492.7	467.2	25.50	19.324		
4,300.0	4,276.5	4,296.5	4,103.1	12.1	23.7	-52.58	6.5	-794.5	518.4	492.3	26.06	19.890		
4,400.0	4,375.8	4,389.2	4,190.4	12.4	24.4	-52.22	6.6	-825.4	542.4	515.7	26.62	20.376		
4,500.0	4,475.0	4,475.4	4,271.0	12.7	25.0	-51.89	6.3	-856.1	568.6	541.4	27.15	20.938		
4,600.0	4,574.3	4,565.4	4,354.8	13.0	25.7	-51.59	5.4	-888.8	595.9	568.1	27.72	21.496		
4,700.0	4,673.6	4,653.5	4,436.5	13.3	26.4	-51.36	4.5	-922.0	624.4	596.1	28.28	22.076		
4,800.0	4,773.1	4,743.2	4,519.1	13.5	27.1	-51.29	4.6	-957.1	655.4	626.6	28.80	22.758		
4,900.0	4,872.9	4,839.5	4,607.3	13.7	27.9	-50.90	5.9	-995.5	688.9	659.7	29.23	23.566		
5,000.0	4,972.9	4,939.9	4,699.9	13.9	28.6	-50.35	7.6	-1,034.5	723.5	693.9	29.60	24.445		

CC - Min centre to center distance or convergent point, SF - min separation factor, ES - min ellipse separation

Company:	Synergy Resources	Local Co-ordinate Reference:	Well SRC Kelly Farms 22-4-3CHZ
Project:	SEC.4-T5N-R66W	TVD Reference:	WELL @ 4766.0ft (Original Well Elev)
Reference Site:	SRC Kelly Farms Pad Sec.4-T5N-R66W	MD Reference:	WELL @ 4766.0ft (Original Well Elev)
Site Error:	0.0ft	North Reference:	True
Reference Well:	SRC Kelly Farms 22-4-3CHZ	Survey Calculation Method:	Minimum Curvature
Well Error:	0.0ft	Output errors are at	2.00 sigma
Reference Wellbore	Wellbore #1	Database:	Landmark
Reference Design:	Plan #1 (5-20-13)	Offset TVD Reference:	Offset Datum

Offset Design Northridge Pad Sec.4-T5N-R66W - Northridge 12-4D (Exist.) - Wellbore #1 - Wellbore #1												Offset Site Error:	0.0 ft
Survey Program: 182-MWD												Offset Well Error:	0.0 ft
Reference	Offset	Semi Major Axis		Distance									
Measured Depth (ft)	Vertical Depth (ft)	Measured Depth (ft)	Vertical Depth (ft)	Reference (ft)	Offset (ft)	Highside Toolface (°)	Offset Wellbore Centre +N/-S (ft)	+E/-W (ft)	Between Centres (ft)	Between Ellipses (ft)	Minimum Separation (ft)	Separation Factor	Warning
5,100.0	5,072.9	5,028.9	4,781.9	14.1	29.3	-108.82	9.0	-1,068.9	759.7	719.4	40.38	18.813	
5,200.0	5,172.9	5,112.0	4,858.3	14.2	30.0	-107.98	9.4	-1,101.4	797.1	755.7	41.38	19.262	
5,300.0	5,272.9	5,193.7	4,933.2	14.4	30.7	-107.23	9.3	-1,134.3	835.7	793.4	42.37	19.726	
5,400.0	5,372.9	5,291.8	5,022.6	14.6	31.5	-106.32	10.3	-1,174.5	875.0	831.5	43.52	20.107	
5,500.0	5,472.9	5,463.2	5,182.6	14.8	32.7	-105.21	9.7	-1,235.8	909.8	864.7	45.09	20.178	
5,600.0	5,572.9	5,585.2	5,299.1	14.9	33.4	-104.68	8.6	-1,271.8	938.5	892.4	46.06	20.375	
5,700.0	5,672.9	5,677.6	5,387.7	15.1	33.9	-104.36	7.1	-1,298.2	966.6	919.8	46.83	20.641	
5,800.0	5,772.9	5,770.7	5,476.9	15.3	34.5	-104.10	4.6	-1,324.8	994.9	947.3	47.60	20.903	

Company:	Synergy Resources	Local Co-ordinate Reference:	Well SRC Kelly Farms 22-4-3CHZ
Project:	SEC.4-T5N-R66W	TVD Reference:	WELL @ 4766.0ft (Original Well Elev)
Reference Site:	SRC Kelly Farms Pad Sec.4-T5N-R66W	MD Reference:	WELL @ 4766.0ft (Original Well Elev)
Site Error:	0.0ft	North Reference:	True
Reference Well:	SRC Kelly Farms 22-4-3CHZ	Survey Calculation Method:	Minimum Curvature
Well Error:	0.0ft	Output errors are at	2.00 sigma
Reference Wellbore	Wellbore #1	Database:	Landmark
Reference Design:	Plan #1 (5-20-13)	Offset TVD Reference:	Offset Datum

Offset Design Northridge Pad Sec.4-T5N-R66W - Northridge 4AD (Exist.) - Wellbore #1 - Wellbore #1													Offset Site Error:	0.0 ft
Survey Program: 182-MWD													Offset Well Error:	0.0 ft
Reference	Offset	Semi Major Axis		Distance		Warning								
Measured Depth (ft)	Vertical Depth (ft)	Measured Depth (ft)	Vertical Depth (ft)	Reference (ft)	Offset (ft)	Highside Toolface (°)	Offset Wellbore Centre +N/-S (ft)	+E/-W (ft)	Between Centres (ft)	Between Ellipses (ft)	Minimum Separation (ft)	Separation Factor		
0.0	0.0	0.0	0.0	0.0	0.0	102.38	-78.7	358.6	367.3					
100.0	100.0	88.9	88.9	0.1	0.1	102.37	-78.6	358.4	366.9	366.7	0.21	1,723.986		
200.0	200.0	190.2	190.2	0.3	0.2	102.36	-78.4	357.6	366.1	365.5	0.56	654.535		
249.9	249.9	236.9	236.9	0.4	0.3	102.35	-78.2	357.4	365.9	365.1	0.77	477.667		
300.0	300.0	284.8	284.8	0.6	0.4	102.32	-78.1	357.6	366.1	365.1	0.98	375.128		
400.0	400.0	390.0	390.0	0.8	0.6	102.36	-78.4	357.5	366.0	364.6	1.42	257.920		
500.0	500.0	493.0	493.0	1.0	0.9	102.40	-78.3	355.9	364.5	362.6	1.87	195.319		
600.0	600.0	591.4	591.4	1.2	1.1	102.27	-77.2	354.9	363.2	360.9	2.30	158.100		
700.0	700.0	692.0	691.9	1.5	1.3	102.41	-77.8	353.4	361.9	359.1	2.73	132.438		
800.0	800.0	795.7	795.6	1.7	1.5	102.60	-78.5	351.4	360.1	357.0	3.18	113.172		
871.3	871.3	866.9	866.8	1.8	1.6	162.05	-78.4	349.6	359.2	355.8	3.48	103.115		
900.0	900.0	895.3	895.2	1.9	1.7	162.09	-78.3	349.0	359.4	355.8	3.61	99.677		
1,000.0	999.8	1,009.1	1,008.9	2.1	2.0	162.30	-76.8	344.7	360.4	356.4	4.06	88.793		
1,100.0	1,099.5	1,125.3	1,124.6	2.4	2.2	162.67	-73.8	334.6	359.6	355.1	4.53	79.462		
1,124.7	1,124.0	1,150.4	1,149.5	2.4	2.3	162.71	-72.6	332.1	359.5	354.9	4.63	77.565		
1,200.0	1,198.8	1,229.4	1,228.0	2.6	2.5	162.73	-67.9	324.2	359.8	354.8	4.97	72.362		
1,300.0	1,298.1	1,344.2	1,341.7	2.9	2.8	162.72	-60.4	310.2	357.8	352.4	5.46	65.546		
1,400.0	1,397.3	1,455.4	1,451.0	3.1	3.2	162.38	-50.0	292.5	351.5	345.6	5.96	59.015		
1,500.0	1,496.6	1,559.3	1,552.7	3.4	3.6	161.98	-39.5	274.1	343.2	336.8	6.44	53.306		
1,600.0	1,595.9	1,668.1	1,658.8	3.7	4.0	161.82	-29.6	252.3	333.0	326.0	6.95	47.944		
1,700.0	1,695.2	1,772.7	1,760.2	4.0	4.4	161.46	-18.5	229.3	320.4	312.9	7.46	42.956		
1,800.0	1,794.5	1,872.0	1,856.4	4.3	4.9	161.18	-8.3	206.6	307.1	299.1	7.95	38.611		
1,900.0	1,893.7	1,973.0	1,954.1	4.6	5.3	160.77	2.6	183.7	293.8	285.4	8.46	34.727		
2,000.0	1,993.0	2,077.4	2,054.7	4.9	5.9	160.02	15.4	158.6	278.9	269.9	9.01	30.964		
2,100.0	2,092.3	2,180.3	2,153.2	5.2	6.4	158.85	29.9	132.5	262.4	252.8	9.58	27.374		
2,200.0	2,191.6	2,281.7	2,249.6	5.5	7.0	157.09	46.1	105.7	244.5	234.3	10.20	23.974		
2,300.0	2,290.9	2,378.7	2,341.7	5.8	7.6	155.25	61.3	79.5	226.4	215.6	10.82	20.922		
2,400.0	2,390.1	2,476.7	2,435.0	6.1	8.1	153.20	76.2	53.4	209.0	197.5	11.47	18.219		
2,500.0	2,489.4	2,575.5	2,528.9	6.4	8.7	150.53	92.0	27.0	191.8	179.5	12.21	15.700		
2,600.0	2,588.7	2,673.3	2,621.5	6.7	9.3	146.80	109.3	0.8	174.9	161.8	13.08	13.372		
2,700.0	2,688.0	2,776.0	2,718.5	7.1	9.9	142.15	127.1	-28.1	157.5	143.4	14.11	11.163		
2,800.0	2,787.3	2,874.3	2,810.8	7.4	10.6	136.73	143.4	-57.7	139.3	124.0	15.28	9.112		
2,900.0	2,886.5	2,967.2	2,898.8	7.7	11.1	131.05	157.6	-83.7	124.2	107.8	16.49	7.533		
3,000.0	2,985.8	3,067.4	2,994.1	8.0	11.7	124.11	172.0	-110.8	111.4	93.5	17.89	6.226		
3,100.0	3,085.1	3,163.4	3,085.3	8.3	12.3	115.24	187.0	-136.9	101.1	81.6	19.45	5.196		
3,200.0	3,184.4	3,262.2	3,179.5	8.6	12.9	105.17	202.2	-162.5	94.6	73.6	20.98	4.508		
3,300.0	3,283.7	3,362.4	3,275.8	8.9	13.4	95.59	214.2	-187.7	89.1	66.9	22.23	4.009		
3,400.0	3,382.9	3,460.8	3,370.6	9.2	13.9	85.98	225.4	-211.5	86.4	63.2	23.18	3.726		
3,491.1	3,473.4	3,551.5	3,458.1	9.5	14.4	77.16	234.8	-233.3	85.3	61.5	23.75	3.589 CC		
3,500.0	3,482.2	3,560.2	3,466.5	9.6	14.4	76.33	235.7	-235.3	85.3	61.5	23.79	3.584 ES, SF		
3,600.0	3,581.5	3,658.3	3,561.4	9.9	15.0	67.41	246.8	-257.9	87.6	63.5	24.09	3.636		
3,700.0	3,680.8	3,755.7	3,655.3	10.2	15.5	58.65	258.1	-281.1	92.5	68.3	24.12	3.834		
3,800.0	3,780.1	3,850.2	3,745.5	10.5	16.0	50.50	272.3	-305.2	103.0	79.0	23.94	4.301		
3,900.0	3,879.4	3,944.6	3,834.6	10.8	16.7	43.16	289.5	-331.5	119.1	95.4	23.69	5.028		
4,000.0	3,978.6	4,040.5	3,924.2	11.1	17.3	37.09	308.3	-359.7	138.8	115.3	23.49	5.910		
4,100.0	4,077.9	4,140.9	4,018.1	11.4	18.0	32.17	327.6	-389.6	159.5	136.1	23.40	6.816		
4,200.0	4,177.2	4,246.7	4,118.4	11.8	18.7	28.45	344.9	-418.6	177.1	153.7	23.44	7.556		
4,300.0	4,276.5	4,340.0	4,207.3	12.1	19.2	25.57	358.1	-443.6	193.3	169.7	23.57	8.200		
4,400.0	4,375.8	4,436.4	4,298.1	12.4	19.9	22.93	374.1	-471.7	213.1	189.4	23.75	8.975		
4,500.0	4,475.0	4,529.8	4,386.2	12.7	20.5	21.12	390.4	-497.8	233.4	209.4	24.03	9.712		
4,600.0	4,574.3	4,623.1	4,473.5	13.0	21.1	19.33	407.6	-526.2	256.2	231.9	24.34	10.525		
4,700.0	4,673.6	4,722.2	4,565.7	13.3	21.8	17.32	424.8	-558.1	279.7	255.1	24.62	11.363		

CC - Min centre to center distance or convergent point, SF - min separation factor, ES - min ellipse separation

Company:	Synergy Resources	Local Co-ordinate Reference:	Well SRC Kelly Farms 22-4-3CHZ
Project:	SEC.4-T5N-R66W	TVD Reference:	WELL @ 4766.0ft (Original Well Elev)
Reference Site:	SRC Kelly Farms Pad Sec.4-T5N-R66W	MD Reference:	WELL @ 4766.0ft (Original Well Elev)
Site Error:	0.0ft	North Reference:	True
Reference Well:	SRC Kelly Farms 22-4-3CHZ	Survey Calculation Method:	Minimum Curvature
Well Error:	0.0ft	Output errors are at	2.00 sigma
Reference Wellbore	Wellbore #1	Database:	Landmark
Reference Design:	Plan #1 (5-20-13)	Offset TVD Reference:	Offset Datum

Offset Design Northridge Pad Sec.4-T5N-R66W - Northridge 4AD (Exist.) - Wellbore #1 - Wellbore #1												Offset Site Error:	0.0 ft
Survey Program: 182-MWD												Offset Well Error:	0.0 ft
Reference		Offset		Semi Major Axis			Distance						Warning
Measured Depth (ft)	Vertical Depth (ft)	Measured Depth (ft)	Vertical Depth (ft)	Reference (ft)	Offset (ft)	Highside Toolface (°)	Offset Wellbore Centre +N/-S (ft)	+E/-W (ft)	Between Centres (ft)	Between Ellipses (ft)	Minimum Separation (ft)	Separation Factor	
4,800.0	4,773.1	4,820.7	4,658.0	13.5	22.5	16.22	443.2	-587.0	304.6	279.6	24.91	12.226	
4,900.0	4,872.9	4,928.1	4,759.4	13.7	23.2	15.04	462.0	-617.1	331.1	305.9	25.17	13.154	
5,000.0	4,972.9	5,019.6	4,846.2	13.9	23.8	14.12	477.3	-641.8	359.5	334.2	25.38	14.167	
5,100.0	5,072.9	5,133.0	4,954.4	14.1	24.4	-46.31	495.5	-670.6	388.9	351.1	37.75	10.301	
5,200.0	5,172.9	5,249.5	5,066.7	14.2	25.0	-47.51	509.6	-697.6	414.2	375.6	38.62	10.726	
5,300.0	5,272.9	5,364.6	5,179.4	14.4	25.5	-48.38	520.1	-718.6	433.8	394.4	39.35	11.024	
5,400.0	5,372.9	5,481.3	5,294.3	14.6	25.9	-49.10	529.1	-737.2	450.9	410.9	40.00	11.271	
5,500.0	5,472.9	5,602.6	5,414.6	14.8	26.3	-49.73	534.8	-751.5	462.9	422.4	40.57	11.411	
5,600.0	5,572.9	5,710.4	5,522.0	14.9	26.5	-50.02	538.9	-760.0	471.4	430.4	41.01	11.493	
5,700.0	5,672.9	5,813.8	5,625.0	15.1	26.7	-50.06	544.1	-766.9	479.7	438.3	41.41	11.584	
5,800.0	5,772.9	5,928.9	5,739.9	15.3	27.0	-50.16	547.4	-772.1	485.0	443.2	41.80	11.601	
5,900.0	5,872.9	6,030.4	5,841.4	15.5	27.1	-50.28	549.1	-775.7	488.7	446.6	42.15	11.595	
6,000.0	5,972.9	6,131.3	5,942.1	15.7	27.3	-50.54	549.8	-780.0	492.5	450.0	42.50	11.587	
6,100.0	6,072.9	6,233.3	6,044.1	15.8	27.4	-50.78	550.4	-784.0	495.9	453.1	42.86	11.571	
6,200.0	6,172.9	6,336.6	6,147.3	16.0	27.6	-51.08	550.3	-787.9	498.8	455.6	43.21	11.544	
6,300.0	6,272.9	6,442.8	6,253.4	16.2	27.7	-51.43	549.2	-791.5	500.8	457.2	43.55	11.499	
6,400.0	6,372.9	6,547.2	6,357.8	16.4	27.8	-51.72	547.6	-793.6	501.4	457.5	43.88	11.426	
6,500.0	6,472.9	6,640.6	6,451.1	16.6	27.9	-51.95	546.6	-795.6	502.5	458.3	44.20	11.369	
6,600.0	6,572.8	6,741.2	6,551.7	16.7	28.1	-142.25	546.1	-798.6	507.0	476.0	30.95	16.380	
6,700.0	6,671.4	6,845.6	6,656.1	16.8	28.2	-143.05	544.4	-801.2	520.9	490.4	30.48	17.091	
6,800.0	6,766.7	6,939.8	6,750.2	16.8	28.3	-143.97	542.5	-803.1	545.9	516.1	29.71	18.370	
6,900.0	6,857.0	7,025.6	6,836.0	16.8	28.4	-144.66	541.2	-804.8	582.6	553.9	28.76	20.260	
7,000.0	6,940.5	7,099.2	6,909.6	16.7	28.5	-144.74	540.5	-807.0	631.9	604.1	27.81	22.720	
7,100.0	7,015.5	7,167.1	6,977.4	16.8	28.6	-144.14	540.4	-809.7	693.1	666.0	27.15	25.527	
7,200.0	7,080.5	7,237.5	7,047.8	17.0	28.7	-142.97	540.5	-812.0	764.1	737.0	27.06	28.236	
7,300.0	7,134.4	7,297.4	7,107.7	17.5	28.8	-140.19	541.0	-813.2	843.1	814.8	28.25	29.848	
7,400.0	7,176.1	7,339.1	7,149.4	18.4	28.9	-134.24	541.4	-813.7	929.0	897.2	31.72	29.286	

Company:	Synergy Resources	Local Co-ordinate Reference:	Well SRC Kelly Farms 22-4-3CHZ
Project:	SEC.4-T5N-R66W	TVD Reference:	WELL @ 4766.0ft (Original Well Elev)
Reference Site:	SRC Kelly Farms Pad Sec.4-T5N-R66W	MD Reference:	WELL @ 4766.0ft (Original Well Elev)
Site Error:	0.0ft	North Reference:	True
Reference Well:	SRC Kelly Farms 22-4-3CHZ	Survey Calculation Method:	Minimum Curvature
Well Error:	0.0ft	Output errors are at	2.00 sigma
Reference Wellbore	Wellbore #1	Database:	Landmark
Reference Design:	Plan #1 (5-20-13)	Offset TVD Reference:	Offset Datum

Offset Design													Offset Site Error:	0.0 ft
Survey Program: 0-MWD													Offset Well Error:	0.0 ft
Reference		Offset		Semi Major Axis			Distance							Warning
Measured Depth (ft)	Vertical Depth (ft)	Measured Depth (ft)	Vertical Depth (ft)	Reference (ft)	Offset (ft)	Highside Toolface (°)	Offset Wellbore Centre +N/-S (ft)	+E/-W (ft)	Between Centres (ft)	Between Ellipses (ft)	Minimum Separation (ft)	Separation Factor		
0.0	0.0	0.0	0.0	0.0	0.0	168.67	-22.2	4.5	22.7					
100.0	100.0	100.0	100.0	0.1	0.1	168.67	-22.2	4.5	22.7	22.4	0.22	100.857		
200.0	200.0	200.0	200.0	0.3	0.3	168.67	-22.2	4.5	22.7	22.0	0.67	33.619		
300.0	300.0	300.0	300.0	0.6	0.6	168.67	-22.2	4.5	22.7	21.5	1.12	20.171		
400.0	400.0	400.0	400.0	0.8	0.8	168.67	-22.2	4.5	22.7	21.1	1.57	14.408		
500.0	500.0	500.0	500.0	1.0	1.0	168.67	-22.2	4.5	22.7	20.6	2.02	11.206		
600.0	600.0	600.0	600.0	1.2	1.2	168.67	-22.2	4.5	22.7	20.2	2.47	9.169		
700.0	700.0	700.0	700.0	1.5	1.5	168.67	-22.2	4.5	22.7	19.7	2.92	7.758		
800.0	800.0	800.0	800.0	1.7	1.7	168.67	-22.2	4.5	22.7	19.3	3.37	6.724 CC, ES		
900.0	900.0	900.0	900.0	1.9	1.9	-135.08	-22.2	4.5	23.9	20.1	3.82	6.257 SF		
1,000.0	999.8	999.8	999.8	2.1	2.1	-142.66	-22.2	4.5	27.8	23.6	4.26	6.538		
1,100.0	1,099.5	1,099.5	1,099.5	2.4	2.4	-151.23	-22.2	4.5	35.2	30.5	4.70	7.486		
1,200.0	1,198.8	1,198.8	1,198.8	2.6	2.6	-158.23	-22.2	4.5	45.7	40.6	5.14	8.896		
1,300.0	1,298.1	1,299.8	1,299.8	2.9	2.8	-163.50	-20.6	3.9	55.5	49.9	5.58	9.933		
1,400.0	1,397.3	1,401.3	1,401.1	3.1	3.0	-168.75	-15.5	2.3	62.5	56.4	6.03	10.363		
1,500.0	1,496.6	1,502.9	1,502.3	3.4	3.3	-174.66	-7.0	-0.4	67.0	60.5	6.47	10.346		
1,600.0	1,595.9	1,604.4	1,603.0	3.7	3.5	178.30	4.9	-4.2	69.5	62.5	6.93	10.022		
1,700.0	1,695.2	1,705.5	1,702.9	4.0	3.8	169.67	20.1	-9.1	70.7	63.2	7.42	9.522		
1,800.0	1,794.5	1,806.0	1,801.5	4.3	4.1	159.12	38.6	-15.0	71.6	63.7	7.98	8.980		
1,900.0	1,893.7	1,905.7	1,898.6	4.6	4.4	146.71	60.1	-21.9	73.9	65.3	8.64	8.551		
2,000.0	1,993.0	2,004.2	1,993.7	4.9	4.8	133.20	84.6	-29.8	79.2	69.8	9.42	8.406		
2,100.0	2,092.3	2,101.6	2,086.8	5.2	5.2	119.92	111.7	-38.5	88.9	78.7	10.25	8.676		
2,200.0	2,191.6	2,198.9	2,179.5	5.5	5.7	109.04	139.9	-47.5	103.0	91.9	11.04	9.331		
2,300.0	2,290.9	2,296.3	2,272.2	5.8	6.2	100.91	168.1	-56.5	119.8	108.1	11.75	10.194		
2,400.0	2,390.1	2,393.6	2,365.0	6.1	6.7	94.83	196.2	-65.6	138.5	126.1	12.43	11.141		
2,500.0	2,489.4	2,490.9	2,457.7	6.4	7.2	90.22	224.4	-74.6	158.3	145.2	13.08	12.103		
2,600.0	2,588.7	2,588.2	2,550.4	6.7	7.8	86.63	252.5	-83.6	178.9	165.2	13.72	13.043		
2,700.0	2,688.0	2,685.5	2,643.1	7.1	8.3	83.79	280.7	-92.6	200.0	185.7	14.34	13.944		
2,800.0	2,787.3	2,782.8	2,735.8	7.4	8.9	81.49	308.9	-101.7	221.5	206.6	14.97	14.799		
2,900.0	2,886.5	2,880.1	2,828.5	7.7	9.4	79.60	337.0	-110.7	243.3	227.7	15.60	15.604		
3,000.0	2,985.8	2,977.4	2,921.2	8.0	10.0	78.02	365.2	-119.7	265.4	249.1	16.22	16.360		
3,100.0	3,085.1	3,074.7	3,013.9	8.3	10.5	76.68	393.3	-128.7	287.5	270.7	16.84	17.069		
3,200.0	3,184.4	3,172.0	3,106.6	8.6	11.1	75.53	421.5	-137.8	309.8	292.4	17.47	17.734		
3,300.0	3,283.7	3,269.3	3,199.3	8.9	11.7	74.54	449.7	-146.8	332.2	314.1	18.10	18.357		
3,400.0	3,382.9	3,366.6	3,292.0	9.2	12.3	73.67	477.8	-155.8	354.7	336.0	18.73	18.942		
3,500.0	3,482.2	3,463.9	3,384.7	9.6	12.8	72.90	506.0	-164.8	377.3	357.9	19.36	19.492		
3,600.0	3,581.5	3,561.2	3,477.4	9.9	13.4	72.22	534.2	-173.9	399.9	379.9	19.99	20.008		
3,700.0	3,680.8	3,658.5	3,570.1	10.2	14.0	71.62	562.3	-182.9	422.6	401.9	20.62	20.494		
3,800.0	3,780.1	3,755.8	3,662.8	10.5	14.6	71.07	590.5	-191.9	445.3	424.0	21.25	20.952		
3,900.0	3,879.4	3,853.2	3,755.5	10.8	15.2	70.58	618.6	-201.0	468.0	446.1	21.88	21.384		
4,000.0	3,978.6	3,950.5	3,848.2	11.1	15.7	70.14	646.8	-210.0	490.8	468.2	22.52	21.793		
4,100.0	4,077.9	4,047.8	3,940.9	11.4	16.3	69.73	675.0	-219.0	513.5	490.4	23.15	22.179		
4,200.0	4,177.2	4,145.1	4,033.6	11.8	16.9	69.36	703.1	-228.0	536.4	512.6	23.79	22.545		
4,300.0	4,276.5	4,242.4	4,126.3	12.1	17.5	69.02	731.3	-237.1	559.2	534.8	24.43	22.892		
4,400.0	4,375.8	4,339.7	4,219.0	12.4	18.1	68.70	759.4	-246.1	582.0	557.0	25.06	23.221		
4,500.0	4,475.0	4,437.0	4,311.7	12.7	18.7	68.41	787.6	-255.1	604.9	579.2	25.70	23.534		
4,600.0	4,574.3	4,534.3	4,404.4	13.0	19.3	68.14	815.8	-264.1	627.8	601.4	26.34	23.832		
4,700.0	4,673.6	4,631.6	4,497.1	13.3	19.9	67.96	843.9	-273.2	650.7	623.7	26.98	24.118		
4,800.0	4,773.1	4,728.6	4,589.6	13.5	20.5	67.99	872.0	-282.2	674.5	646.9	27.54	24.492		
4,900.0	4,872.9	4,825.1	4,681.5	13.7	21.0	67.81	899.9	-291.1	699.5	671.5	28.03	24.957		
5,000.0	4,972.9	4,920.9	4,772.8	13.9	21.6	67.44	927.7	-300.0	726.0	697.6	28.46	25.512		
5,100.0	5,072.9	5,016.2	4,863.6	14.1	22.2	7.23	955.2	-308.8	753.7	721.1	32.60	23.119		

CC - Min centre to center distance or convergent point, SF - min separation factor, ES - min ellipse separation

Company:	Synergy Resources	Local Co-ordinate Reference:	Well SRC Kelly Farms 22-4-3CHZ
Project:	SEC.4-T5N-R66W	TVD Reference:	WELL @ 4766.0ft (Original Well Elev)
Reference Site:	SRC Kelly Farms Pad Sec.4-T5N-R66W	MD Reference:	WELL @ 4766.0ft (Original Well Elev)
Site Error:	0.0ft	North Reference:	True
Reference Well:	SRC Kelly Farms 22-4-3CHZ	Survey Calculation Method:	Minimum Curvature
Well Error:	0.0ft	Output errors are at	2.00 sigma
Reference Wellbore	Wellbore #1	Database:	Landmark
Reference Design:	Plan #1 (5-20-13)	Offset TVD Reference:	Offset Datum

Offset Design		SRC Kelly Farms Pad Sec.4-T5N-R66W - SRC Kelly Farms 21-4-3NHZ #2 - Wellbore #1 - Plan #1 (5-2										Offset Site Error:		0.0 ft
Survey Program: 0-MWD												Offset Well Error:		0.0 ft
Reference		Offset		Semi Major Axis			Distance							Warning
Measured Depth (ft)	Vertical Depth (ft)	Measured Depth (ft)	Vertical Depth (ft)	Reference (ft)	Offset (ft)	Highside Toolface (°)	Offset Wellbore Centre +N/-S (ft)	+E/-W (ft)	Between Centres (ft)	Between Ellipses (ft)	Minimum Separation (ft)	Separation Factor		
5,200.0	5,172.9	5,111.5	4,954.3	14.2	22.8	6.30	982.8	-317.7	781.5	748.1	33.47	23.351		
5,300.0	5,272.9	5,206.8	5,045.1	14.4	23.4	5.43	1,010.4	-326.5	809.6	775.2	34.33	23.581		
5,400.0	5,372.9	5,302.1	5,135.9	14.6	23.9	4.61	1,038.0	-335.3	837.8	802.6	35.19	23.807		
5,500.0	5,472.9	5,397.3	5,226.6	14.8	24.5	3.85	1,065.5	-344.2	866.2	830.1	36.05	24.030		
5,600.0	5,572.9	5,492.6	5,317.4	14.9	25.1	3.14	1,093.1	-353.0	894.6	857.8	36.90	24.248		
5,700.0	5,672.9	5,623.9	5,443.3	15.1	25.8	2.28	1,128.9	-364.5	921.6	883.8	37.86	24.343		
5,800.0	5,772.9	5,764.1	5,579.3	15.3	26.3	1.56	1,161.0	-374.8	944.4	905.7	38.70	24.402		
5,900.0	5,872.9	5,907.5	5,720.0	15.5	26.8	1.01	1,187.2	-383.2	962.6	923.1	39.45	24.398		
6,000.0	5,972.9	6,053.3	5,864.3	15.7	27.2	0.62	1,207.0	-389.5	976.1	936.0	40.10	24.342		
6,100.0	6,072.9	6,200.8	6,011.2	15.8	27.5	0.37	1,219.8	-393.6	984.8	944.2	40.65	24.229		
6,200.0	6,172.9	6,349.4	6,159.7	16.0	27.7	0.26	1,225.5	-395.5	988.6	947.5	41.07	24.070		
6,300.0	6,272.9	6,462.7	6,272.9	16.2	27.9	0.26	1,225.8	-395.5	988.8	947.4	41.40	23.883		
6,349.0	6,321.9	6,511.7	6,321.9	16.3	27.9	0.26	1,225.8	-395.5	988.8	947.2	41.55	23.796		
6,400.0	6,372.9	6,562.4	6,372.6	16.4	28.0	0.32	1,225.8	-394.5	988.8	947.1	41.70	23.711		
6,500.0	6,472.9	6,660.2	6,469.6	16.6	28.0	1.00	1,225.8	-382.7	988.9	947.0	41.91	23.596		
6,600.0	6,572.8	6,754.0	6,560.3	16.7	28.0	-87.76	1,225.8	-359.1	989.6	954.9	34.64	28.564		
6,700.0	6,671.4	6,845.1	6,644.7	16.8	28.0	-86.51	1,225.8	-325.0	990.7	955.8	34.91	28.380		
6,800.0	6,766.7	6,934.0	6,722.3	16.8	27.9	-85.34	1,225.8	-281.7	992.2	957.1	35.07	28.294		
6,900.0	6,857.0	7,021.1	6,792.5	16.8	27.9	-84.26	1,225.8	-230.2	993.9	958.7	35.18	28.252		
7,000.0	6,940.5	7,106.5	6,854.8	16.7	27.8	-83.28	1,225.8	-171.8	995.8	960.5	35.34	28.180		
7,100.0	7,015.5	7,190.6	6,908.9	16.8	27.7	-82.42	1,225.8	-107.5	997.7	962.0	35.67	27.969		
7,200.0	7,080.5	7,273.7	6,954.6	17.0	27.6	-81.68	1,225.8	-38.2	999.4	963.1	36.32	27.514		

Company:	Synergy Resources	Local Co-ordinate Reference:	Well SRC Kelly Farms 22-4-3CHZ
Project:	SEC.4-T5N-R66W	TVD Reference:	WELL @ 4766.0ft (Original Well Elev)
Reference Site:	SRC Kelly Farms Pad Sec.4-T5N-R66W	MD Reference:	WELL @ 4766.0ft (Original Well Elev)
Site Error:	0.0ft	North Reference:	True
Reference Well:	SRC Kelly Farms 22-4-3CHZ	Survey Calculation Method:	Minimum Curvature
Well Error:	0.0ft	Output errors are at	2.00 sigma
Reference Wellbore	Wellbore #1	Database:	Landmark
Reference Design:	Plan #1 (5-20-13)	Offset TVD Reference:	Offset Datum

Offset Design													Offset Site Error:	0.0 ft
Survey Program: 0-MWD													Offset Well Error:	0.0 ft
Measured Depth (ft)	Vertical Depth (ft)	Measured Depth (ft)	Vertical Depth (ft)	Reference (ft)	Offset (ft)	Semi Major Axis Highside Toolface (°)	Offset Wellbore Centre +N/-S (ft)	+E/-W (ft)	Between Centres (ft)	Between Ellipses (ft)	Minimum Separation (ft)	Separation Factor	Warning	
0.0	0.0	0.0	0.0	0.0	0.0	168.57	-44.1	8.9	45.0					
100.0	100.0	100.0	100.0	0.1	0.1	168.57	-44.1	8.9	45.0	44.7	0.22	200.071		
200.0	200.0	200.0	200.0	0.3	0.3	168.57	-44.1	8.9	45.0	44.3	0.67	66.690		
300.0	300.0	300.0	300.0	0.6	0.6	168.57	-44.1	8.9	45.0	43.8	1.12	40.014		
400.0	400.0	400.0	400.0	0.8	0.8	168.57	-44.1	8.9	45.0	43.4	1.57	28.582		
500.0	500.0	500.0	500.0	1.0	1.0	168.57	-44.1	8.9	45.0	42.9	2.02	22.230		
600.0	600.0	600.0	600.0	1.2	1.2	168.57	-44.1	8.9	45.0	42.5	2.47	18.188		
700.0	700.0	700.0	700.0	1.5	1.5	168.57	-44.1	8.9	45.0	42.0	2.92	15.390		
800.0	800.0	800.0	800.0	1.7	1.7	168.57	-44.1	8.9	45.0	41.6	3.37	13.338 CC, ES		
900.0	900.0	900.0	900.0	1.9	1.9	-133.66	-44.1	8.9	46.2	42.3	3.82	12.098		
1,000.0	999.8	999.8	999.8	2.1	2.1	-137.96	-44.1	8.9	49.9	45.7	4.26	11.728		
1,100.0	1,099.5	1,098.7	1,098.7	2.4	2.3	-142.15	-45.3	7.7	57.4	52.7	4.68	12.262		
1,200.0	1,198.8	1,197.2	1,197.1	2.6	2.5	-144.09	-48.9	4.1	68.6	63.5	5.09	13.476		
1,300.0	1,298.1	1,295.4	1,294.9	2.9	2.7	-143.41	-54.8	-1.9	81.5	75.9	5.53	14.722		
1,400.0	1,397.3	1,393.3	1,392.0	3.1	2.9	-141.04	-63.1	-10.1	95.7	89.7	6.01	15.928		
1,500.0	1,496.6	1,492.1	1,489.9	3.4	3.2	-138.60	-72.5	-19.5	110.6	104.1	6.50	17.008		
1,600.0	1,595.9	1,590.8	1,587.8	3.7	3.4	-136.75	-81.8	-28.9	125.7	118.7	7.02	17.916		
1,700.0	1,695.2	1,689.6	1,685.7	4.0	3.7	-135.29	-91.2	-38.2	140.9	133.3	7.54	18.681		
1,800.0	1,794.5	1,788.4	1,783.6	4.3	4.0	-134.11	-100.6	-47.6	156.1	148.1	8.08	19.332		
1,900.0	1,893.7	1,887.2	1,881.5	4.6	4.3	-133.15	-109.9	-56.9	171.4	162.8	8.62	19.889		
2,000.0	1,993.0	1,986.0	1,979.4	4.9	4.6	-132.34	-119.3	-66.3	186.8	177.6	9.17	20.368		
2,100.0	2,092.3	2,084.8	2,077.3	5.2	4.9	-131.66	-128.7	-75.7	202.2	192.5	9.73	20.786		
2,200.0	2,191.6	2,183.5	2,175.2	5.5	5.2	-131.07	-138.0	-85.0	217.6	207.3	10.29	21.152		
2,300.0	2,290.9	2,282.3	2,273.1	5.8	5.5	-130.56	-147.4	-94.4	233.0	222.2	10.85	21.474		
2,400.0	2,390.1	2,381.1	2,371.0	6.1	5.8	-130.11	-156.7	-103.8	248.5	237.0	11.42	21.760		
2,500.0	2,489.4	2,479.9	2,468.9	6.4	6.2	-129.72	-166.1	-113.1	263.9	251.9	11.99	22.014		
2,600.0	2,588.7	2,578.7	2,566.7	6.7	6.5	-129.37	-175.5	-122.5	279.4	266.8	12.56	22.242		
2,700.0	2,688.0	2,677.5	2,664.6	7.1	6.8	-129.06	-184.8	-131.8	294.9	281.7	13.14	22.448		
2,800.0	2,787.3	2,776.2	2,762.5	7.4	7.1	-128.77	-194.2	-141.2	310.3	296.6	13.71	22.634		
2,900.0	2,886.5	2,875.0	2,860.4	7.7	7.4	-128.52	-203.5	-150.6	325.8	311.5	14.29	22.803		
3,000.0	2,985.8	2,973.8	2,958.3	8.0	7.8	-128.29	-212.9	-159.9	341.3	326.5	14.87	22.957		
3,100.0	3,085.1	3,072.6	3,056.2	8.3	8.1	-128.07	-222.3	-169.3	356.8	341.4	15.45	23.098		
3,200.0	3,184.4	3,171.4	3,154.1	8.6	8.4	-127.88	-231.6	-178.6	372.3	356.3	16.03	23.228		
3,300.0	3,283.7	3,270.2	3,252.0	8.9	8.8	-127.70	-241.0	-188.0	387.9	371.2	16.61	23.347		
3,400.0	3,382.9	3,368.9	3,349.9	9.2	9.1	-127.54	-250.3	-197.4	403.4	386.2	17.20	23.457		
3,500.0	3,482.2	3,467.7	3,447.8	9.6	9.4	-127.38	-259.7	-206.7	418.9	401.1	17.78	23.559		
3,600.0	3,581.5	3,566.5	3,545.7	9.9	9.8	-127.24	-269.1	-216.1	434.4	416.0	18.36	23.654		
3,700.0	3,680.8	3,668.3	3,646.5	10.2	10.1	-127.12	-278.6	-225.6	449.8	430.9	18.95	23.741		
3,800.0	3,780.1	3,778.1	3,755.8	10.5	10.4	-127.31	-286.7	-233.7	463.5	444.0	19.49	23.783		
3,900.0	3,879.4	3,888.4	3,865.8	10.8	10.6	-127.88	-291.9	-238.9	474.9	454.9	20.00	23.743		
4,000.0	3,978.6	3,998.9	3,976.2	11.1	10.8	-128.84	-294.0	-241.0	484.0	463.5	20.49	23.624		
4,100.0	4,077.9	4,100.6	4,077.9	11.4	10.9	-129.94	-294.1	-241.1	491.7	470.8	20.95	23.470		
4,200.0	4,177.2	4,199.8	4,177.2	11.8	11.1	-130.99	-294.1	-241.1	499.5	478.1	21.40	23.337		
4,300.0	4,276.5	4,299.1	4,276.5	12.1	11.2	-132.00	-294.1	-241.1	507.5	485.6	21.86	23.220		
4,400.0	4,375.8	4,398.4	4,375.8	12.4	11.4	-132.99	-294.1	-241.1	515.6	493.3	22.30	23.116		
4,500.0	4,475.0	4,497.7	4,475.0	12.7	11.6	-133.94	-294.1	-241.1	523.9	501.1	22.75	23.025		
4,600.0	4,574.3	4,597.0	4,574.3	13.0	11.7	-134.87	-294.1	-241.1	532.3	509.1	23.20	22.946		
4,700.0	4,673.6	4,696.2	4,673.6	13.3	11.9	-135.78	-294.1	-241.1	540.8	517.1	23.64	22.877		
4,800.0	4,773.1	4,795.8	4,773.1	13.5	12.1	-136.58	-294.1	-241.1	547.8	523.7	24.02	22.801		
4,900.0	4,872.9	4,895.6	4,872.9	13.7	12.2	-137.08	-294.1	-241.1	552.3	527.9	24.39	22.647		
5,000.0	4,972.9	4,995.5	4,972.9	13.9	12.4	-137.29	-294.1	-241.1	554.2	529.5	24.72	22.417		
5,100.0	5,072.9	5,095.5	5,072.9	14.1	12.6	163.34	-294.1	-241.1	554.3	530.2	24.11	22.991		

CC - Min centre to center distance or convergent point, SF - min separation factor, ES - min ellipse separation

Company:	Synergy Resources	Local Co-ordinate Reference:	Well SRC Kelly Farms 22-4-3CHZ
Project:	SEC.4-T5N-R66W	TVD Reference:	WELL @ 4766.0ft (Original Well Elev)
Reference Site:	SRC Kelly Farms Pad Sec.4-T5N-R66W	MD Reference:	WELL @ 4766.0ft (Original Well Elev)
Site Error:	0.0ft	North Reference:	True
Reference Well:	SRC Kelly Farms 22-4-3CHZ	Survey Calculation Method:	Minimum Curvature
Well Error:	0.0ft	Output errors are at	2.00 sigma
Reference Wellbore	Wellbore #1	Database:	Landmark
Reference Design:	Plan #1 (5-20-13)	Offset TVD Reference:	Offset Datum

Offset Design		SRC Kelly Farms Pad Sec.4-T5N-R66W - SRC Kelly Farms 22-4-3NHZ - Wellbore #1 - Plan #1 (5-20-1										Offset Site Error:		0.0 ft	
Survey Program: 0-MWD													Offset Well Error:		0.0 ft
Reference		Offset		Semi Major Axis			Distance							Warning	
Measured Depth	Vertical Depth	Measured Depth	Vertical Depth	Reference	Offset	Highside Toolface	Offset Wellbore Centre		Between Centres	Between Ellipses	Minimum Separation	Separation Factor			
(ft)	(ft)	(ft)	(ft)	(ft)	(ft)	(°)	+N/-S (ft)	+E/-W (ft)	(ft)	(ft)	(ft)				
5,200.0	5,172.9	5,195.5	5,172.9	14.2	12.8	163.34	-294.1	-241.1	554.3	529.9	24.49	22.634			
5,300.0	5,272.9	5,295.5	5,272.9	14.4	12.9	163.34	-294.1	-241.1	554.3	529.5	24.87	22.286			
5,400.0	5,372.9	5,395.5	5,372.9	14.6	13.1	163.34	-294.1	-241.1	554.3	529.1	25.26	21.946			
5,500.0	5,472.9	5,495.5	5,472.9	14.8	13.3	163.34	-294.1	-241.1	554.3	528.7	25.65	21.615			
5,600.0	5,572.9	5,595.5	5,572.9	14.9	13.5	163.34	-294.1	-241.1	554.3	528.3	26.04	21.292			
5,700.0	5,672.9	5,695.5	5,672.9	15.1	13.7	163.34	-294.1	-241.1	554.3	527.9	26.43	20.977			
5,800.0	5,772.9	5,795.5	5,772.9	15.3	13.9	163.34	-294.1	-241.1	554.3	527.5	26.82	20.670			
5,900.0	5,872.9	5,895.5	5,872.9	15.5	14.0	163.34	-294.1	-241.1	554.3	527.1	27.21	20.370			
6,000.0	5,972.9	5,995.5	5,972.9	15.7	14.2	163.34	-294.1	-241.1	554.3	526.7	27.61	20.078			
6,100.0	6,072.9	6,095.5	6,072.9	15.8	14.4	163.34	-294.1	-241.1	554.3	526.3	28.01	19.793			
6,200.0	6,172.9	6,195.5	6,172.9	16.0	14.6	163.34	-294.1	-241.1	554.3	525.9	28.41	19.515			
6,300.0	6,272.9	6,295.5	6,272.9	16.2	14.8	163.34	-294.1	-241.1	554.3	525.5	28.81	19.243			
6,346.2	6,319.1	6,341.8	6,319.1	16.3	14.9	163.34	-294.1	-241.1	554.3	525.3	28.99	19.120			
6,400.0	6,372.9	6,389.3	6,366.7	16.4	15.0	163.27	-294.1	-240.4	554.6	525.4	29.20	18.994			
6,500.0	6,472.9	6,472.1	6,449.0	16.6	15.1	162.43	-293.7	-231.9	557.2	527.7	29.57	18.846			
6,600.0	6,572.8	6,550.0	6,525.1	16.7	15.2	70.75	-293.1	-215.4	562.4	531.8	30.52	18.428			
6,700.0	6,671.4	6,631.6	6,602.4	16.8	15.2	69.10	-292.1	-189.3	566.9	536.4	30.53	18.569			
6,800.0	6,766.7	6,709.8	6,673.1	16.8	15.2	67.81	-290.9	-156.2	570.4	539.9	30.43	18.744			
6,900.0	6,857.0	6,787.2	6,739.3	16.8	15.3	66.86	-289.4	-116.0	572.5	542.3	30.28	18.909			
7,000.0	6,940.5	6,864.1	6,800.3	16.7	15.3	66.23	-287.7	-69.3	573.3	543.1	30.18	18.998			
7,100.0	7,015.5	6,940.7	6,855.7	16.8	15.4	65.94	-285.7	-16.6	572.5	542.2	30.25	18.923			
7,200.0	7,080.5	7,017.2	6,905.1	17.0	15.6	65.98	-283.5	41.7	570.1	539.5	30.67	18.587			
7,300.0	7,134.4	7,093.7	6,948.0	17.5	16.1	66.36	-281.1	104.9	566.2	534.6	31.58	17.931			
7,400.0	7,176.1	7,170.4	6,984.1	18.4	16.8	67.08	-278.6	172.5	560.8	527.7	33.09	16.949			
7,500.0	7,204.7	7,250.0	7,013.6	19.6	17.8	68.17	-275.8	246.4	554.1	518.8	35.27	15.710			
7,600.0	7,219.7	7,325.4	7,033.8	21.2	19.0	69.56	-273.1	318.9	546.3	508.3	38.00	14.375			
7,700.0	7,222.0	7,400.0	7,046.3	22.9	20.3	70.90	-270.4	392.4	538.0	496.9	41.11	13.089			
7,800.0	7,222.0	7,485.0	7,051.0	24.9	21.9	71.27	-267.2	477.1	532.8	488.2	44.52	11.966			
7,900.0	7,222.0	7,584.9	7,051.0	27.0	23.9	71.14	-263.5	577.0	529.2	480.8	48.40	10.934			
8,000.0	7,222.0	7,684.8	7,051.0	29.2	26.1	71.00	-259.7	676.9	525.7	473.2	52.51	10.012			
8,100.0	7,222.0	7,784.8	7,051.0	31.5	28.3	70.87	-256.0	776.7	522.2	465.3	56.81	9.192			
8,200.0	7,222.0	7,884.7	7,051.0	33.9	30.7	70.74	-252.3	876.6	518.6	457.4	61.25	8.467			
8,300.0	7,222.0	7,984.6	7,051.0	36.3	33.1	70.60	-248.5	976.4	515.1	449.3	65.81	7.827			
8,400.0	7,222.0	8,084.6	7,051.0	38.8	35.6	70.46	-244.8	1,076.3	511.6	441.1	70.46	7.261			
8,500.0	7,222.0	8,184.5	7,051.0	41.3	38.1	70.32	-241.1	1,176.2	508.1	432.9	75.18	6.758			
8,600.0	7,222.0	8,284.4	7,051.0	43.9	40.7	70.18	-237.3	1,276.0	504.5	424.6	79.95	6.310			
8,700.0	7,222.0	8,384.4	7,051.0	46.5	43.3	70.03	-233.6	1,375.9	501.0	416.2	84.77	5.910			
8,800.0	7,222.0	8,484.3	7,051.0	49.1	45.9	69.88	-229.9	1,475.8	497.5	407.9	89.63	5.551			
8,900.0	7,222.0	8,584.2	7,051.0	51.7	48.5	69.73	-226.1	1,575.6	494.0	399.5	94.51	5.227			
9,000.0	7,222.0	8,684.1	7,051.0	54.4	51.2	69.58	-222.4	1,675.5	490.5	391.1	99.42	4.934			
9,100.0	7,222.0	8,784.1	7,051.0	57.1	53.8	69.43	-218.7	1,775.3	487.0	382.7	104.34	4.667			
9,200.0	7,222.0	8,884.0	7,051.0	59.7	56.5	69.27	-214.9	1,875.2	483.5	374.2	109.28	4.425			
9,300.0	7,222.0	8,983.9	7,051.0	62.4	59.2	69.12	-211.2	1,975.1	480.0	365.8	114.22	4.202			
9,400.0	7,222.0	9,083.9	7,051.0	65.1	61.9	68.96	-207.5	2,074.9	476.5	357.3	119.17	3.999			
9,500.0	7,222.0	9,183.8	7,051.0	67.9	64.6	68.79	-203.7	2,174.8	473.0	348.9	124.12	3.811			
9,600.0	7,222.0	9,283.7	7,051.0	70.6	67.3	68.63	-200.0	2,274.6	469.5	340.5	129.07	3.638			
9,700.0	7,222.0	9,383.7	7,051.0	73.3	70.0	68.46	-196.3	2,374.5	466.1	332.0	134.02	3.478			
9,800.0	7,222.0	9,483.6	7,051.0	76.0	72.8	68.29	-192.5	2,474.4	462.6	323.6	138.97	3.329			
9,900.0	7,222.0	9,583.5	7,051.0	78.8	75.5	68.12	-188.8	2,574.2	459.1	315.2	143.91	3.190			
10,000.0	7,222.0	9,683.4	7,051.0	81.5	78.2	67.94	-185.1	2,674.1	455.7	306.8	148.85	3.061			
10,100.0	7,222.0	9,783.4	7,051.0	84.3	81.0	67.77	-181.3	2,773.9	452.2	298.4	153.78	2.941			
10,200.0	7,222.0	9,883.3	7,051.0	87.0	83.7	67.59	-177.6	2,873.8	448.7	290.0	158.70	2.828			

CC - Min centre to center distance or convergent point, SF - min separation factor, ES - min ellipse separation

SRC Kelly Farms Pad Sec.4-T5N-R66W - SRC Kelly Farms 22-4-3NHZ - Wellbore #1 - Plan #1 (5-20-1)												Offset Site Error:	0.0 ft
Survey Program: 0-MWD												Offset Well Error:	0.0 ft
Reference		Offset		Semi Major Axis			Distance						Warning
Measured Depth	Vertical Depth	Measured Depth	Vertical Depth	Reference	Offset	Highside Toolface	Offset Wellbore Centre		Between Centres	Between Ellipses	Minimum Separation	Separation Factor	
(ft)	(ft)	(ft)	(ft)	(ft)	(ft)	(°)	+N/-S (ft)	+E/-W (ft)	(ft)	(ft)	(ft)		
10,300.0	7,222.0	9,983.2	7,051.0	89.8	86.5	67.40	-173.9	2,973.7	445.3	281.7	163.61	2.722	
10,400.0	7,222.0	10,083.2	7,051.0	92.5	89.2	67.22	-170.1	3,073.5	441.8	273.3	168.51	2.622	
10,500.0	7,222.0	10,183.1	7,051.0	95.3	92.0	67.03	-166.4	3,173.4	438.4	265.0	173.39	2.528	
10,600.0	7,222.0	10,283.0	7,051.0	98.0	94.7	66.84	-162.7	3,273.2	435.0	256.7	178.26	2.440	
10,700.0	7,222.0	10,383.0	7,051.0	100.8	97.5	66.64	-158.9	3,373.1	431.5	248.4	183.12	2.356	
10,800.0	7,222.0	10,482.9	7,051.0	103.6	100.3	66.44	-155.2	3,473.0	428.1	240.1	187.96	2.278	
10,900.0	7,222.0	10,582.8	7,051.0	106.3	103.0	66.24	-151.4	3,572.8	424.7	231.9	192.79	2.203	
11,000.0	7,222.0	10,682.7	7,051.0	109.1	105.8	66.04	-147.7	3,672.7	421.2	223.7	197.59	2.132	
11,100.0	7,222.0	10,782.7	7,051.0	111.9	108.5	65.83	-144.0	3,772.5	417.8	215.5	202.38	2.065	
11,200.0	7,222.0	10,882.6	7,051.0	114.7	111.3	65.62	-140.2	3,872.4	414.4	207.3	207.15	2.001	
11,300.0	7,222.0	10,982.5	7,051.0	117.4	114.1	65.40	-136.5	3,972.3	411.0	199.1	211.89	1.940	
11,400.0	7,222.0	11,082.5	7,051.0	120.2	116.8	65.18	-132.8	4,072.1	407.6	191.0	216.62	1.882	
11,500.0	7,222.0	11,182.4	7,051.0	123.0	119.6	64.96	-129.0	4,172.0	404.2	182.9	221.32	1.826	
11,600.0	7,222.0	11,282.3	7,051.0	125.8	122.4	64.73	-125.3	4,271.8	400.9	174.9	226.00	1.774	
11,700.0	7,222.0	11,382.3	7,051.0	128.5	125.2	64.50	-121.6	4,371.7	397.5	166.8	230.65	1.723	
11,800.0	7,222.0	11,482.2	7,051.0	131.3	127.9	64.27	-117.8	4,471.6	394.1	158.8	235.28	1.675	
11,900.0	7,222.0	11,582.1	7,051.0	134.1	130.7	64.03	-114.1	4,571.4	390.7	150.9	239.88	1.629	
12,000.0	7,222.0	11,682.0	7,051.0	136.9	133.5	63.79	-110.4	4,671.3	387.4	142.9	244.45	1.585	
12,100.0	7,222.0	11,782.0	7,051.0	139.7	136.3	63.54	-106.6	4,771.1	384.0	135.1	248.99	1.542	
12,200.0	7,222.0	11,881.9	7,051.0	142.5	139.0	63.29	-102.9	4,871.0	380.7	127.2	253.49	1.502	
12,300.0	7,222.0	11,981.8	7,051.0	145.3	141.8	63.04	-99.2	4,970.9	377.4	119.4	257.97	1.463	Level 3
12,400.0	7,222.0	12,081.8	7,051.0	148.0	144.6	62.78	-95.4	5,070.7	374.0	111.6	262.41	1.425	Level 3
12,485.0	7,222.0	12,154.4	7,051.0	150.4	146.6	62.59	-92.7	5,143.3	371.4	105.5	265.93	1.397	Level 3
12,500.0	7,222.0	12,154.4	7,051.0	150.8	146.6	62.59	-92.7	5,143.3	371.7	105.4	266.30	1.396	Level 3, SF
12,515.0	7,222.0	12,154.4	7,051.0	151.3	146.6	62.59	-92.7	5,143.3	372.6	106.0	266.68	1.397	Level 3

Company:	Synergy Resources	Local Co-ordinate Reference:	Well SRC Kelly Farms 22-4-3CHZ
Project:	SEC.4-T5N-R66W	TVD Reference:	WELL @ 4766.0ft (Original Well Elev)
Reference Site:	SRC Kelly Farms Pad Sec.4-T5N-R66W	MD Reference:	WELL @ 4766.0ft (Original Well Elev)
Site Error:	0.0ft	North Reference:	True
Reference Well:	SRC Kelly Farms 22-4-3CHZ	Survey Calculation Method:	Minimum Curvature
Well Error:	0.0ft	Output errors are at	2.00 sigma
Reference Wellbore	Wellbore #1	Database:	Landmark
Reference Design:	Plan #1 (5-20-13)	Offset TVD Reference:	Offset Datum

Offset Design													Offset Site Error:	0.0 ft
Survey Program: 0-MWD													Offset Well Error:	0.0 ft
Reference		Offset		Semi Major Axis			Distance							Warning
Measured Depth (ft)	Vertical Depth (ft)	Measured Depth (ft)	Vertical Depth (ft)	Reference (ft)	Offset (ft)	Highside Toolface (°)	Offset Wellbore Centre +N/-S (ft)	+E/-W (ft)	Between Centres (ft)	Between Ellipses (ft)	Minimum Separation (ft)	Separation Factor		
0.0	0.0	1.0	1.0	0.0	0.0	-11.43	44.1	-8.9	45.0	45.0	0.00	N/A		
100.0	100.0	101.0	101.0	0.1	0.1	-11.43	44.1	-8.9	45.0	44.7	0.23	198.090		
200.0	200.0	201.0	201.0	0.3	0.3	-11.43	44.1	-8.9	45.0	44.3	0.68	66.469		
300.0	300.0	301.0	301.0	0.6	0.6	-11.43	44.1	-8.9	45.0	43.8	1.13	39.934		
366.3	366.3	367.3	367.3	0.7	0.7	-11.43	44.1	-8.9	45.0	43.5	1.42	31.574 CC		
400.0	400.0	401.0	401.0	0.8	0.8	-11.43	44.1	-8.9	45.0	43.4	1.58	28.542 ES		
500.0	500.0	500.0	500.0	1.0	1.0	-12.37	45.5	-10.0	46.6	44.5	2.02	23.040		
600.0	600.0	597.9	597.7	1.2	1.2	-14.78	49.5	-13.1	51.3	48.8	2.47	20.793		
700.0	700.0	695.8	695.2	1.5	1.5	-17.94	56.2	-18.2	59.3	56.4	2.93	20.256		
800.0	800.0	792.9	791.7	1.7	1.7	-21.12	65.4	-25.3	70.8	67.3	3.41	20.721		
900.0	900.0	892.1	889.9	1.9	2.0	36.15	76.3	-33.6	82.7	78.9	3.84	21.575		
1,000.0	999.8	991.6	988.5	2.1	2.3	35.83	87.3	-42.0	92.0	87.7	4.28	21.478		
1,100.0	1,099.5	1,091.4	1,087.3	2.4	2.6	36.77	98.3	-50.4	98.4	93.6	4.74	20.737		
1,200.0	1,198.8	1,191.3	1,186.2	2.6	3.0	38.64	109.2	-58.8	102.5	97.3	5.23	19.598		
1,300.0	1,298.1	1,291.1	1,285.1	2.9	3.3	40.51	120.2	-67.2	106.5	100.8	5.74	18.563		
1,400.0	1,397.3	1,391.0	1,384.0	3.1	3.6	42.24	131.2	-75.7	110.6	104.4	6.26	17.677		
1,500.0	1,496.6	1,490.8	1,482.9	3.4	3.9	43.84	142.2	-84.1	114.8	108.0	6.79	16.910		
1,600.0	1,595.9	1,590.7	1,581.8	3.7	4.3	45.33	153.2	-92.5	119.1	111.8	7.33	16.242		
1,700.0	1,695.2	1,690.6	1,680.7	4.0	4.6	46.72	164.1	-100.9	123.4	115.6	7.88	15.657		
1,800.0	1,794.5	1,790.4	1,779.6	4.3	4.9	48.01	175.1	-109.3	127.9	119.4	8.44	15.142		
1,900.0	1,893.7	1,890.3	1,878.5	4.6	5.3	49.21	186.1	-117.7	132.3	123.3	9.01	14.685		
2,000.0	1,993.0	1,990.2	1,977.4	4.9	5.6	50.34	197.1	-126.2	136.9	127.3	9.59	14.279		
2,100.0	2,092.3	2,090.0	2,076.3	5.2	6.0	51.39	208.1	-134.6	141.4	131.3	10.16	13.915		
2,200.0	2,191.6	2,189.9	2,175.2	5.5	6.3	52.38	219.0	-143.0	146.1	135.3	10.75	13.588		
2,300.0	2,290.9	2,289.7	2,274.1	5.8	6.6	53.30	230.0	-151.4	150.7	139.4	11.34	13.292		
2,400.0	2,390.1	2,389.6	2,373.0	6.1	7.0	54.17	241.0	-159.8	155.4	143.5	11.93	13.025		
2,500.0	2,489.4	2,489.5	2,471.9	6.4	7.3	54.99	252.0	-168.2	160.2	147.6	12.53	12.782		
2,600.0	2,588.7	2,589.3	2,570.8	6.7	7.6	55.76	263.0	-176.6	164.9	151.8	13.13	12.560		
2,700.0	2,688.0	2,689.2	2,669.7	7.1	8.0	56.49	274.0	-185.1	169.7	156.0	13.74	12.357		
2,800.0	2,787.3	2,789.1	2,768.6	7.4	8.3	57.18	284.9	-193.5	174.6	160.2	14.34	12.171		
2,900.0	2,886.5	2,888.9	2,867.5	7.7	8.7	57.83	295.9	-201.9	179.4	164.4	14.95	11.999		
3,000.0	2,985.8	2,988.8	2,966.4	8.0	9.0	58.44	306.9	-210.3	184.3	168.7	15.56	11.841		
3,100.0	3,085.1	3,088.6	3,065.3	8.3	9.3	59.03	317.9	-218.7	189.2	173.0	16.18	11.694		
3,200.0	3,184.4	3,188.5	3,164.2	8.6	9.7	59.58	328.9	-227.1	194.1	177.3	16.79	11.558		
3,300.0	3,283.7	3,288.4	3,263.1	8.9	10.0	60.11	339.8	-235.5	199.0	181.6	17.41	11.431		
3,400.0	3,382.9	3,388.2	3,362.0	9.2	10.4	60.61	350.8	-244.0	203.9	185.9	18.02	11.314		
3,500.0	3,482.2	3,488.1	3,460.9	9.6	10.7	61.09	361.8	-252.4	208.9	190.2	18.64	11.203		
3,600.0	3,581.5	3,588.0	3,559.8	9.9	11.0	61.55	372.8	-260.8	213.8	194.6	19.26	11.101		
3,700.0	3,680.8	3,687.8	3,658.7	10.2	11.4	61.98	383.8	-269.2	218.8	198.9	19.89	11.004		
3,800.0	3,780.1	3,787.7	3,757.6	10.5	11.7	62.40	394.7	-277.6	223.8	203.3	20.51	10.914		
3,900.0	3,879.4	3,887.5	3,856.5	10.8	12.1	62.80	405.7	-286.0	228.8	207.7	21.13	10.828		
4,000.0	3,978.6	3,987.4	3,955.4	11.1	12.4	63.18	416.7	-294.5	233.8	212.1	21.76	10.748		
4,100.0	4,077.9	4,087.3	4,054.3	11.4	12.8	63.55	427.7	-302.9	238.9	216.5	22.38	10.672		
4,200.0	4,177.2	4,187.1	4,153.2	11.8	13.1	63.90	438.7	-311.3	243.9	220.9	23.01	10.601		
4,300.0	4,276.5	4,287.0	4,252.1	12.1	13.4	64.23	449.7	-319.7	248.9	225.3	23.63	10.533		
4,400.0	4,375.8	4,386.9	4,351.0	12.4	13.8	64.55	460.6	-328.1	254.0	229.7	24.26	10.469		
4,500.0	4,475.0	4,486.7	4,449.9	12.7	14.1	64.86	471.6	-336.5	259.0	234.1	24.89	10.408		
4,600.0	4,574.3	4,586.6	4,548.8	13.0	14.5	65.16	482.6	-344.9	264.1	238.6	25.52	10.351		
4,700.0	4,673.6	4,686.4	4,647.7	13.3	14.8	65.45	493.6	-353.4	269.2	243.1	26.14	10.300		
4,800.0	4,773.1	4,786.2	4,746.5	13.5	15.1	65.40	504.6	-361.8	275.2	248.6	26.63	10.336		
4,900.0	4,872.9	4,885.9	4,845.2	13.7	15.5	64.73	515.5	-370.2	282.8	255.7	27.03	10.459		
5,000.0	4,972.9	4,985.2	4,943.6	13.9	15.8	63.52	526.4	-378.5	291.9	264.5	27.35	10.671		

CC - Min centre to center distance or convergent point, SF - min separation factor, ES - min ellipse separation

Company:	Synergy Resources	Local Co-ordinate Reference:	Well SRC Kelly Farms 22-4-3CHZ
Project:	SEC.4-T5N-R66W	TVD Reference:	WELL @ 4766.0ft (Original Well Elev)
Reference Site:	SRC Kelly Farms Pad Sec.4-T5N-R66W	MD Reference:	WELL @ 4766.0ft (Original Well Elev)
Site Error:	0.0ft	North Reference:	True
Reference Well:	SRC Kelly Farms 22-4-3CHZ	Survey Calculation Method:	Minimum Curvature
Well Error:	0.0ft	Output errors are at	2.00 sigma
Reference Wellbore	Wellbore #1	Database:	Landmark
Reference Design:	Plan #1 (5-20-13)	Offset TVD Reference:	Offset Datum

Offset Design												Offset Site Error:	0.0 ft
Survey Program: 0-MWD												Offset Well Error:	0.0 ft
Reference		Offset		Semi Major Axis			Distance						Warning
Measured Depth (ft)	Vertical Depth (ft)	Measured Depth (ft)	Vertical Depth (ft)	Reference (ft)	Offset (ft)	Highside Toolface (°)	Offset Wellbore Centre +N/-S (ft)	+E/-W (ft)	Between Centres (ft)	Between Ellipses (ft)	Minimum Separation (ft)	Separation Factor	
5,100.0	5,072.9	5,084.3	5,041.7	14.1	16.2	2.50	537.3	-386.9	302.3	275.9	26.48	11.419	
5,200.0	5,172.9	5,186.8	5,143.2	14.2	16.5	0.86	548.4	-395.3	312.9	285.8	27.15	11.527	
5,300.0	5,272.9	5,295.8	5,251.6	14.4	16.7	-0.42	557.5	-402.3	321.3	293.6	27.73	11.588	
5,400.0	5,372.9	5,405.6	5,361.1	14.6	17.0	-1.20	563.4	-406.9	326.7	298.5	28.22	11.579	
5,500.0	5,472.9	5,515.7	5,471.2	14.8	17.1	-1.54	566.0	-408.8	329.1	300.5	28.63	11.496	
5,600.0	5,572.9	5,618.4	5,573.9	14.9	17.3	-1.55	566.1	-408.9	329.2	300.2	28.98	11.359	
5,700.0	5,672.9	5,718.4	5,673.9	15.1	17.4	-1.55	566.1	-408.9	329.2	299.9	29.35	11.217	
5,800.0	5,772.9	5,818.4	5,773.9	15.3	17.6	-1.55	566.1	-408.9	329.2	299.5	29.71	11.079	
5,900.0	5,872.9	5,918.4	5,873.9	15.5	17.7	-1.55	566.1	-408.9	329.2	299.1	30.08	10.943	
6,000.0	5,972.9	6,018.4	5,973.9	15.7	17.9	-1.55	566.1	-408.9	329.2	298.7	30.45	10.809	
6,100.0	6,072.9	6,118.4	6,073.9	15.8	18.1	-1.55	566.1	-408.9	329.2	298.4	30.83	10.679	
6,200.0	6,172.9	6,218.4	6,173.9	16.0	18.2	-1.55	566.1	-408.9	329.2	298.0	31.20	10.550	
6,300.0	6,272.9	6,318.4	6,273.9	16.2	18.4	-1.55	566.1	-408.9	329.2	297.6	31.58	10.424	
6,400.0	6,372.9	6,418.8	6,374.3	16.4	18.5	-1.40	566.1	-408.0	329.2	297.2	31.94	10.307	
6,477.3	6,450.2	6,496.1	6,451.2	16.5	18.6	-0.01	566.1	-400.0	329.1	297.0	32.07	10.261	
6,500.0	6,472.9	6,518.5	6,473.2	16.6	18.6	0.66	566.1	-396.2	329.1	297.0	32.09	10.257	
6,600.0	6,572.8	6,614.0	6,565.5	16.7	18.6	-85.58	566.1	-372.1	330.1	297.0	33.15	9.958	
6,700.0	6,671.4	6,706.7	6,651.3	16.8	18.6	-81.85	566.1	-337.1	332.6	299.1	33.50	9.929	
6,800.0	6,766.7	6,797.0	6,729.9	16.8	18.5	-78.35	566.1	-292.7	336.3	302.7	33.66	9.991	
6,900.0	6,857.0	6,885.3	6,800.7	16.8	18.4	-75.14	566.1	-240.1	340.9	307.2	33.67	10.123	
7,000.0	6,940.5	6,971.9	6,863.3	16.7	18.3	-72.28	566.1	-180.4	346.0	312.3	33.62	10.290	
7,100.0	7,015.5	7,056.9	6,917.4	16.8	18.3	-69.78	566.1	-114.8	351.2	317.6	33.62	10.445	
7,200.0	7,080.5	7,140.8	6,962.8	17.0	18.2	-67.67	566.1	-44.3	356.2	322.4	33.86	10.521	
7,300.0	7,134.4	7,223.7	6,999.2	17.5	18.3	-65.94	566.1	30.1	360.8	326.3	34.49	10.459	
7,400.0	7,176.1	7,305.8	7,026.6	18.4	19.0	-64.61	566.1	107.5	364.5	328.9	35.65	10.225	
7,500.0	7,204.7	7,387.4	7,044.8	19.6	20.1	-63.66	566.1	186.9	367.4	329.9	37.43	9.814	
7,600.0	7,219.7	7,468.6	7,053.9	21.2	21.5	-63.10	566.2	267.6	369.1	329.3	39.80	9.273	
7,700.0	7,222.0	7,559.3	7,055.0	22.9	23.1	-62.96	566.2	358.3	369.6	326.7	42.82	8.631	
7,800.0	7,222.0	7,659.3	7,055.0	24.9	25.1	-62.96	566.2	458.3	369.6	323.3	46.28	7.986	
7,900.0	7,222.0	7,759.3	7,055.0	27.0	27.2	-62.96	566.2	558.3	369.6	319.6	50.01	7.390	
8,000.0	7,222.0	7,859.3	7,055.0	29.2	29.4	-62.96	566.2	658.3	369.6	315.6	53.95	6.850	
8,100.0	7,222.0	7,959.3	7,055.0	31.5	31.8	-62.96	566.2	758.3	369.6	311.5	58.07	6.364	
8,200.0	7,222.0	8,059.3	7,055.0	33.9	34.1	-62.96	566.2	858.3	369.6	307.3	62.33	5.930	
8,300.0	7,222.0	8,159.3	7,055.0	36.3	36.6	-62.97	566.2	958.3	369.6	302.9	66.69	5.542	
8,400.0	7,222.0	8,259.3	7,055.0	38.8	39.1	-62.97	566.2	1,058.3	369.6	298.5	71.15	5.195	
8,500.0	7,222.0	8,359.3	7,055.0	41.3	41.6	-62.97	566.3	1,158.3	369.6	294.0	75.69	4.884	
8,600.0	7,222.0	8,459.3	7,055.0	43.9	44.2	-62.97	566.3	1,258.3	369.6	289.4	80.28	4.604	
8,700.0	7,222.0	8,559.3	7,055.0	46.5	46.8	-62.97	566.3	1,358.3	369.7	284.7	84.93	4.353	
8,800.0	7,222.0	8,659.3	7,055.0	49.1	49.4	-62.97	566.3	1,458.3	369.7	280.1	89.62	4.125	
8,900.0	7,222.0	8,759.3	7,055.0	51.7	52.0	-62.97	566.3	1,558.3	369.7	275.3	94.35	3.918	
9,000.0	7,222.0	8,859.3	7,055.0	54.4	54.7	-62.97	566.3	1,658.3	369.7	270.6	99.11	3.730	
9,100.0	7,222.0	8,959.3	7,055.0	57.1	57.3	-62.97	566.3	1,758.3	369.7	265.8	103.89	3.558	
9,200.0	7,222.0	9,059.3	7,055.0	59.7	60.0	-62.97	566.3	1,858.3	369.7	261.0	108.71	3.401	
9,300.0	7,222.0	9,159.3	7,055.0	62.4	62.7	-62.97	566.3	1,958.3	369.7	256.2	113.54	3.256	
9,400.0	7,222.0	9,259.3	7,055.0	65.1	65.4	-62.97	566.4	2,058.3	369.7	251.3	118.39	3.123	
9,500.0	7,222.0	9,359.3	7,055.0	67.9	68.1	-62.98	566.4	2,158.3	369.7	246.5	123.26	3.000	
9,600.0	7,222.0	9,459.3	7,055.0	70.6	70.8	-62.98	566.4	2,258.3	369.7	241.6	128.14	2.886	
9,700.0	7,222.0	9,559.3	7,055.0	73.3	73.5	-62.98	566.4	2,358.3	369.8	236.7	133.04	2.779	
9,800.0	7,222.0	9,659.3	7,055.0	76.0	76.3	-62.98	566.4	2,458.3	369.8	231.8	137.94	2.681	
9,900.0	7,222.0	9,759.3	7,055.0	78.8	79.0	-62.98	566.4	2,558.3	369.8	226.9	142.86	2.588	
10,000.0	7,222.0	9,859.3	7,055.0	81.5	81.8	-62.98	566.4	2,658.3	369.8	222.0	147.78	2.502	
10,100.0	7,222.0	9,959.3	7,055.0	84.3	84.5	-62.98	566.4	2,758.3	369.8	217.1	152.72	2.421	

CC - Min centre to center distance or convergent point, SF - min separation factor, ES - min ellipse separation

SRC Kelly Farms Pad Sec.4-T5N-R66W - SRC Kelly Farms A-4-3NHZ - Wellbore #1 - Plan #1 (5-20-13)												Offset Site Error:	0.0 ft
Survey Program: 0-MWD												Offset Well Error:	0.0 ft
Reference		Offset		Semi Major Axis			Distance						Warning
Measured Depth	Vertical Depth	Measured Depth	Vertical Depth	Reference	Offset	Highside Toolface	Offset Wellbore Centre +N/-S	+E/-W	Between Centres	Between Ellipses	Minimum Separation	Separation Factor	
(ft)	(ft)	(ft)	(ft)	(ft)	(ft)	(°)	(ft)	(ft)	(ft)	(ft)	(ft)		
10,200.0	7,222.0	10,059.3	7,055.0	87.0	87.2	-62.98	566.4	2,858.3	369.8	212.2	157.66	2.346	
10,300.0	7,222.0	10,159.3	7,055.0	89.8	90.0	-62.98	566.5	2,958.3	369.8	207.2	162.61	2.274	
10,400.0	7,222.0	10,259.3	7,055.0	92.5	92.7	-62.98	566.5	3,058.3	369.8	202.3	167.56	2.207	
10,500.0	7,222.0	10,359.3	7,055.0	95.3	95.5	-62.98	566.5	3,158.3	369.8	197.3	172.52	2.144	
10,600.0	7,222.0	10,459.3	7,055.0	98.0	98.3	-62.98	566.5	3,258.3	369.9	192.4	177.49	2.084	
10,700.0	7,222.0	10,559.3	7,055.0	100.8	101.0	-62.98	566.5	3,358.3	369.9	187.4	182.46	2.027	
10,800.0	7,222.0	10,659.3	7,055.0	103.6	103.8	-62.99	566.5	3,458.3	369.9	182.4	187.44	1.973	
10,900.0	7,222.0	10,759.3	7,055.0	106.3	106.6	-62.99	566.5	3,558.3	369.9	177.5	192.42	1.922	
11,000.0	7,222.0	10,859.3	7,055.0	109.1	109.3	-62.99	566.5	3,658.3	369.9	172.5	197.40	1.874	
11,100.0	7,222.0	10,959.3	7,055.0	111.9	112.1	-62.99	566.5	3,758.3	369.9	167.5	202.39	1.828	
11,200.0	7,222.0	11,059.3	7,055.0	114.7	114.9	-62.99	566.6	3,858.3	369.9	162.5	207.38	1.784	
11,300.0	7,222.0	11,159.3	7,055.0	117.4	117.7	-62.99	566.6	3,958.3	369.9	157.6	212.37	1.742	
11,400.0	7,222.0	11,259.3	7,055.0	120.2	120.4	-62.99	566.6	4,058.3	369.9	152.6	217.37	1.702	
11,500.0	7,222.0	11,359.3	7,055.0	123.0	123.2	-62.99	566.6	4,158.3	369.9	147.6	222.36	1.664	
11,600.0	7,222.0	11,459.3	7,055.0	125.8	126.0	-62.99	566.6	4,258.3	370.0	142.6	227.36	1.627	
11,700.0	7,222.0	11,559.3	7,055.0	128.5	128.8	-62.99	566.6	4,358.3	370.0	137.6	232.37	1.592	
11,800.0	7,222.0	11,659.3	7,055.0	131.3	131.5	-62.99	566.6	4,458.3	370.0	132.6	237.37	1.559	
11,900.0	7,222.0	11,759.3	7,055.0	134.1	134.3	-62.99	566.6	4,558.3	370.0	127.6	242.38	1.526	
12,000.0	7,222.0	11,859.3	7,055.0	136.9	137.1	-63.00	566.6	4,658.3	370.0	122.6	247.39	1.496 Level 3	
12,100.0	7,222.0	11,959.3	7,055.0	139.7	139.9	-63.00	566.7	4,758.3	370.0	117.6	252.40	1.466 Level 3	
12,200.0	7,222.0	12,059.3	7,055.0	142.5	142.7	-63.00	566.7	4,858.3	370.0	112.6	257.42	1.437 Level 3	
12,300.0	7,222.0	12,159.3	7,055.0	145.3	145.5	-63.00	566.7	4,958.3	370.0	107.6	262.43	1.410 Level 3	
12,400.0	7,222.0	12,259.3	7,055.0	148.0	148.3	-63.00	566.7	5,058.3	370.0	102.6	267.45	1.384 Level 3	
12,500.0	7,222.0	12,359.3	7,055.0	150.8	151.0	-63.00	566.7	5,158.3	370.0	97.6	272.47	1.358 Level 3	
12,515.0	7,222.0	12,374.3	7,055.0	151.3	151.5	-63.00	566.7	5,173.3	370.0	96.8	273.22	1.354 Level 3, SF	

Offset Design													SRC Kelly Farms Pad Sec.4-T5N-R66W - SRC Northridge 32-4-5NHZ - Wellbore #1 - Plan #1 (5-21-13)		Offset Site Error:		0.0 ft
Survey Program: 0-MWD													Offset Well Error:		0.0 ft		
Reference		Offset		Semi Major Axis			Distance										
Measured Depth	Vertical Depth	Measured Depth	Vertical Depth	Reference	Offset	Highside Toolface	Offset Wellbore Centre		Between Centres	Between Ellipses	Minimum Separation	Separation Factor	Warning				
(ft)	(ft)	(ft)	(ft)	(ft)	(ft)	(°)	+N/-S (ft)	+E/-W (ft)	(ft)	(ft)	(ft)						
0.0	0.0	0.0	0.0	0.0	0.0	126.83	-36.1	48.2	60.2								
100.0	100.0	99.0	99.0	0.1	0.1	126.83	-36.1	48.2	60.2	59.9	0.22	269.031					
200.0	200.0	199.0	199.0	0.3	0.3	126.83	-36.1	48.2	60.2	59.5	0.67	89.528					
300.0	300.0	299.0	299.0	0.6	0.6	126.83	-36.1	48.2	60.2	59.0	1.12	53.645					
400.0	400.0	399.0	399.0	0.8	0.8	126.83	-36.1	48.2	60.2	58.6	1.57	38.296					
500.0	500.0	499.0	499.0	1.0	1.0	126.83	-36.1	48.2	60.2	58.1	2.02	29.776					
600.0	600.0	599.0	599.0	1.2	1.2	126.83	-36.1	48.2	60.2	57.7	2.47	24.357					
700.0	700.0	699.0	699.0	1.5	1.5	126.83	-36.1	48.2	60.2	57.2	2.92	20.607					
800.0	800.0	799.0	799.0	1.7	1.7	126.83	-36.1	48.2	60.2	56.8	3.37	17.858 CC, ES					
900.0	900.0	899.0	899.0	1.9	1.9	-173.99	-36.1	48.2	61.9	58.1	3.81	16.237					
1,000.0	999.8	998.8	998.8	2.1	2.1	-174.45	-36.1	48.2	67.1	62.9	4.25	15.793					
1,100.0	1,099.5	1,097.8	1,097.8	2.4	2.4	-175.32	-35.9	48.5	76.0	71.3	4.68	16.239					
1,200.0	1,198.8	1,195.3	1,195.2	2.6	2.6	-177.71	-34.7	51.6	89.5	84.4	5.10	17.532					
1,300.0	1,298.1	1,291.9	1,291.6	2.9	2.8	179.06	-32.2	57.6	105.4	99.9	5.53	19.041					
1,400.0	1,397.3	1,388.6	1,387.9	3.1	3.0	175.61	-28.5	66.4	123.5	117.6	5.98	20.671					
1,500.0	1,496.6	1,486.6	1,485.3	3.4	3.2	172.84	-24.6	75.7	142.4	136.0	6.42	22.173					
1,600.0	1,595.9	1,584.6	1,582.8	3.7	3.5	170.72	-20.7	85.1	161.5	154.6	6.87	23.497					
1,700.0	1,695.2	1,682.6	1,680.3	4.0	3.7	169.04	-16.8	94.5	180.8	173.5	7.33	24.664					
1,800.0	1,794.5	1,780.6	1,777.8	4.3	4.0	167.69	-12.9	103.9	200.2	192.4	7.79	25.696					
1,900.0	1,893.7	1,878.6	1,875.2	4.6	4.2	166.58	-9.0	113.3	219.7	211.4	8.26	26.609					
2,000.0	1,993.0	1,976.6	1,972.7	4.9	4.5	165.65	-5.1	122.7	239.3	230.5	8.72	27.425					
2,100.0	2,092.3	2,074.6	2,070.2	5.2	4.8	164.87	-1.2	132.1	258.9	249.7	9.19	28.156					
2,200.0	2,191.6	2,172.6	2,167.7	5.5	5.1	164.19	2.7	141.5	278.5	268.8	9.67	28.813					
2,300.0	2,290.9	2,270.6	2,265.1	5.8	5.3	163.60	6.6	150.9	298.2	288.1	10.14	29.406					
2,400.0	2,390.1	2,368.6	2,362.6	6.1	5.6	163.08	10.5	160.3	317.9	307.3	10.62	29.944					
2,500.0	2,489.4	2,466.6	2,460.1	6.4	5.9	162.63	14.4	169.7	337.6	326.5	11.09	30.434					
2,600.0	2,588.7	2,564.6	2,557.5	6.7	6.1	162.22	18.3	179.0	357.4	345.8	11.57	30.881					
2,700.0	2,688.0	2,662.6	2,655.0	7.1	6.4	161.86	22.1	188.4	377.1	365.1	12.05	31.291					
2,800.0	2,787.3	2,760.6	2,752.5	7.4	6.7	161.53	26.0	197.8	396.9	384.4	12.53	31.669					
2,900.0	2,886.5	2,858.6	2,850.0	7.7	7.0	161.24	29.9	207.2	416.7	403.7	13.02	32.017					
3,000.0	2,985.8	2,956.6	2,947.4	8.0	7.3	160.97	33.8	216.6	436.5	423.0	13.50	32.339					
3,100.0	3,085.1	3,054.6	3,044.9	8.3	7.6	160.72	37.7	226.0	456.3	442.3	13.98	32.638					
3,200.0	3,184.4	3,152.6	3,142.4	8.6	7.8	160.50	41.6	235.4	476.1	461.7	14.47	32.915					
3,300.0	3,283.7	3,250.6	3,239.8	8.9	8.1	160.29	45.5	244.8	496.0	481.0	14.95	33.174					
3,400.0	3,382.9	3,348.6	3,337.3	9.2	8.4	160.10	49.4	254.2	515.8	500.3	15.44	33.416					
3,500.0	3,482.2	3,446.7	3,434.8	9.6	8.7	159.92	53.3	263.6	535.6	519.7	15.92	33.642					
3,600.0	3,581.5	3,544.7	3,532.3	9.9	9.0	159.76	57.2	272.9	555.4	539.0	16.41	33.855					
3,700.0	3,680.8	3,642.7	3,629.7	10.2	9.3	159.60	61.1	282.3	575.3	558.4	16.89	34.054					
3,800.0	3,780.1	3,740.7	3,727.2	10.5	9.5	159.46	65.0	291.7	595.1	577.8	17.38	34.242					
3,900.0	3,879.4	3,838.7	3,824.7	10.8	9.8	159.33	68.9	301.1	615.0	597.1	17.87	34.419					
4,000.0	3,978.6	3,936.7	3,922.1	11.1	10.1	159.20	72.8	310.5	634.8	616.5	18.36	34.586					
4,100.0	4,077.9	4,034.7	4,019.6	11.4	10.4	159.08	76.7	319.9	654.7	635.8	18.84	34.744					
4,200.0	4,177.2	4,132.7	4,117.1	11.8	10.7	158.97	80.6	329.3	674.5	655.2	19.33	34.893					
4,300.0	4,276.5	4,230.7	4,214.6	12.1	11.0	158.87	84.5	338.7	694.4	674.6	19.82	35.035					
4,400.0	4,375.8	4,328.7	4,312.0	12.4	11.3	158.77	88.4	348.1	714.3	693.9	20.31	35.170					
4,500.0	4,475.0	4,426.7	4,409.5	12.7	11.5	158.68	92.3	357.5	734.1	713.3	20.80	35.298					
4,600.0	4,574.3	4,524.7	4,507.0	13.0	11.8	158.59	96.2	366.9	754.0	732.7	21.29	35.420					
4,700.0	4,673.6	4,622.7	4,604.5	13.3	12.1	158.53	100.1	376.2	773.8	752.0	21.78	35.525					
4,800.0	4,773.1	4,721.1	4,702.3	13.5	12.4	158.52	104.0	385.7	791.5	769.3	22.27	35.551					
4,900.0	4,872.9	4,819.9	4,800.7	13.7	12.7	158.40	107.9	395.1	806.1	783.4	22.72	35.477					
5,000.0	4,972.9	4,919.2	4,899.4	13.9	13.0	158.17	111.9	404.7	817.4	794.3	23.15	35.311					
5,100.0	5,072.9	5,018.6	4,998.3	14.1	13.3	98.46	115.8	414.2	826.4	799.8	26.66	31.004					

COMPASS 2003.21 Build 46

Company:	Synergy Resources	Local Co-ordinate Reference:	Well SRC Kelly Farms 22-4-3CHZ
Project:	SEC.4-T5N-R66W	TVD Reference:	WELL @ 4766.0ft (Original Well Elev)
Reference Site:	SRC Kelly Farms Pad Sec.4-T5N-R66W	MD Reference:	WELL @ 4766.0ft (Original Well Elev)
Site Error:	0.0ft	North Reference:	True
Reference Well:	SRC Kelly Farms 22-4-3CHZ	Survey Calculation Method:	Minimum Curvature
Well Error:	0.0ft	Output errors are at	2.00 sigma
Reference Wellbore	Wellbore #1	Database:	Landmark
Reference Design:	Plan #1 (5-20-13)	Offset TVD Reference:	Offset Datum

Offset Design										SRC Kelly Farms Pad Sec.4-T5N-R66W - SRC Northridge 32-4-5NHZ - Wellbore #1 - Plan #1 (5-21-13)				Offset Site Error:		0.0 ft
Survey Program: 0-MWD										Offset Well Error:		0.0 ft				
Reference		Offset		Semi Major Axis			Distance							Warning		
Measured Depth (ft)	Vertical Depth (ft)	Measured Depth (ft)	Vertical Depth (ft)	Reference (ft)	Offset (ft)	Highside Toolface (°)	Offset Wellbore Centre +N/-S (ft)	+E/-W (ft)	Between Centres (ft)	Between Ellipses (ft)	Minimum Separation (ft)	Separation Factor				
5,200.0	5,172.9	5,118.1	5,097.2	14.2	13.6	98.10	119.8	423.7	835.4	808.2	27.11	30.810				
5,300.0	5,272.9	5,217.6	5,196.1	14.4	13.9	97.74	123.7	433.2	844.3	816.7	27.57	30.623				
5,400.0	5,372.9	5,349.3	5,327.4	14.6	14.2	97.37	127.9	443.4	851.5	823.5	28.04	30.366				
5,500.0	5,472.9	5,484.1	5,462.1	14.8	14.4	97.20	129.8	447.9	854.7	826.3	28.46	30.036				
5,600.0	5,572.9	5,593.9	5,571.9	14.9	14.6	97.19	129.9	448.2	854.9	826.1	28.82	29.661				
5,700.0	5,672.9	5,693.9	5,671.9	15.1	14.8	97.19	129.9	448.2	854.9	825.7	29.19	29.286				
5,800.0	5,772.9	5,793.9	5,771.9	15.3	14.9	97.19	129.9	448.2	854.9	825.3	29.56	28.918				
5,900.0	5,872.9	5,893.9	5,871.9	15.5	15.1	97.19	129.9	448.2	854.9	825.0	29.94	28.556				
6,000.0	5,972.9	5,993.9	5,971.9	15.7	15.3	97.19	129.9	448.2	854.9	824.6	30.31	28.202				
6,100.0	6,072.9	6,093.9	6,071.9	15.8	15.5	97.19	129.9	448.2	854.9	824.2	30.69	27.854				
6,200.0	6,172.9	6,193.9	6,171.9	16.0	15.7	97.19	129.9	448.2	854.9	823.8	31.07	27.513				
6,300.0	6,272.9	7,624.8	7,060.0	16.2	24.3	-178.83	147.3	-401.8	793.2	763.5	29.75	26.664				
6,400.0	6,372.9	7,624.8	7,060.0	16.4	24.3	-178.83	147.3	-401.8	693.9	664.0	29.95	23.168				
6,500.0	6,472.9	7,624.8	7,060.0	16.6	24.3	-178.83	147.3	-401.8	594.9	564.8	30.16	19.727				
6,600.0	6,572.8	7,621.6	7,060.0	16.7	24.2	117.87	147.2	-398.7	496.4	456.6	39.76	12.483				
6,700.0	6,671.4	7,605.4	7,060.0	16.8	23.9	135.55	146.9	-382.4	399.9	362.9	37.01	10.804				
6,800.0	6,766.7	7,575.5	7,060.0	16.8	23.3	140.21	146.3	-352.6	307.9	272.5	35.45	8.687				
6,900.0	6,857.0	7,532.7	7,060.0	16.8	22.5	137.98	145.4	-309.8	223.6	188.9	34.75	6.435				
7,000.0	6,940.5	7,475.2	7,059.8	16.7	21.5	127.99	144.2	-252.3	152.0	116.8	35.16	4.323				
7,100.0	7,015.5	7,406.8	7,055.1	16.8	20.3	105.93	142.8	-184.1	102.6	66.0	36.55	2.807				
7,150.4	7,049.6	7,373.9	7,050.5	16.9	19.8	91.51	142.2	-151.5	94.9	58.4	36.50	2.599 SF				
7,200.0	7,080.5	7,342.2	7,044.6	17.0	19.3	76.77	141.5	-120.4	102.1	66.9	35.17	2.902				
7,300.0	7,134.4	7,280.3	7,029.3	17.5	18.5	52.08	140.3	-60.5	146.0	115.8	30.14	4.843				
7,400.0	7,176.1	7,220.3	7,009.5	18.4	17.8	36.74	139.2	-3.8	203.9	178.5	25.38	8.033				
7,500.0	7,204.7	7,161.7	6,985.7	19.6	17.2	27.68	138.1	49.7	263.4	241.3	22.09	11.923				
7,600.0	7,219.7	7,100.0	6,966.0	21.2	16.8	21.86	137.0	103.7	320.8	300.7	20.07	15.984				
7,700.0	7,222.0	7,050.0	6,928.6	22.9	16.5	19.04	136.1	145.5	375.4	355.9	19.56	19.196				
7,800.0	7,222.0	7,000.0	6,898.3	24.9	16.3	17.49	135.3	185.3	434.7	415.1	19.67	22.103				
7,900.0	7,222.0	6,950.0	6,865.3	27.0	16.2	16.07	134.5	222.9	499.5	479.7	19.85	25.160				
8,000.0	7,222.0	6,900.0	6,829.8	29.2	16.1	14.78	133.8	258.0	569.1	549.0	20.10	28.318				
8,100.0	7,222.0	6,873.1	6,809.7	31.5	16.1	14.13	133.4	275.9	642.3	621.7	20.59	31.200				
8,200.0	7,222.0	6,850.0	6,792.0	33.9	16.1	13.61	133.1	290.7	719.1	698.0	21.13	34.034				
8,300.0	7,222.0	6,800.0	6,751.9	36.3	16.1	12.55	132.5	320.5	798.6	777.1	21.46	37.217				
8,400.0	7,222.0	6,784.9	6,739.4	38.8	16.1	12.26	132.4	329.0	880.2	858.1	22.09	39.844				
8,500.0	7,222.0	6,750.0	6,709.8	41.3	16.1	11.61	132.0	347.6	964.1	941.6	22.57	42.713				

Company:	Synergy Resources	Local Co-ordinate Reference:	Well SRC Kelly Farms 22-4-3CHZ
Project:	SEC.4-T5N-R66W	TVD Reference:	WELL @ 4766.0ft (Original Well Elev)
Reference Site:	SRC Kelly Farms Pad Sec.4-T5N-R66W	MD Reference:	WELL @ 4766.0ft (Original Well Elev)
Site Error:	0.0ft	North Reference:	True
Reference Well:	SRC Kelly Farms 22-4-3CHZ	Survey Calculation Method:	Minimum Curvature
Well Error:	0.0ft	Output errors are at	2.00 sigma
Reference Wellbore	Wellbore #1	Database:	Landmark
Reference Design:	Plan #1 (5-20-13)	Offset TVD Reference:	Offset Datum

Offset Design													Offset Site Error:	0.0 ft
Survey Program: 0-MWD													Offset Well Error:	0.0 ft
Reference		Offset		Semi Major Axis			Distance							Warning
Measured Depth (ft)	Vertical Depth (ft)	Measured Depth (ft)	Vertical Depth (ft)	Reference (ft)	Offset (ft)	Highside Toolface (°)	Offset Wellbore Centre +N/-S (ft)	+E/-W (ft)	Between Centres (ft)	Between Ellipses (ft)	Minimum Separation (ft)	Separation Factor		
0.0	0.0	0.0	0.0	0.0	0.0	108.01	-14.2	43.7	46.0					
100.0	100.0	99.0	99.0	0.1	0.1	108.01	-14.2	43.7	46.0	45.7	0.22	205.506		
200.0	200.0	199.0	199.0	0.3	0.3	108.01	-14.2	43.7	46.0	45.3	0.67	68.388		
300.0	300.0	299.0	299.0	0.6	0.6	108.01	-14.2	43.7	46.0	44.8	1.12	40.978		
400.0	400.0	399.0	399.0	0.8	0.8	108.01	-14.2	43.7	46.0	44.4	1.57	29.253		
500.0	500.0	499.0	499.0	1.0	1.0	108.01	-14.2	43.7	46.0	43.9	2.02	22.745		
600.0	600.0	599.0	599.0	1.2	1.2	108.01	-14.2	43.7	46.0	43.5	2.47	18.606		
700.0	700.0	699.0	699.0	1.5	1.5	108.01	-14.2	43.7	46.0	43.0	2.92	15.741		
800.0	800.0	799.0	799.0	1.7	1.7	108.01	-14.2	43.7	46.0	42.6	3.37	13.641 CC, ES		
900.0	900.0	898.4	898.4	1.9	1.9	165.93	-12.9	44.8	48.3	44.5	3.81	12.679		
1,000.0	999.8	997.3	997.2	2.1	2.1	162.28	-8.9	48.0	55.4	51.2	4.24	13.064		
1,100.0	1,099.5	1,095.5	1,095.0	2.4	2.4	157.92	-2.3	53.2	67.6	62.9	4.68	14.440		
1,200.0	1,198.8	1,193.1	1,191.9	2.6	2.6	153.95	6.6	60.4	84.4	79.3	5.14	16.426		
1,300.0	1,298.1	1,291.4	1,289.5	2.9	2.9	151.12	16.2	68.0	102.2	96.6	5.61	18.215		
1,400.0	1,397.3	1,389.8	1,387.0	3.1	3.1	149.12	25.7	75.6	120.1	114.0	6.09	19.720		
1,500.0	1,496.6	1,488.1	1,484.6	3.4	3.4	147.65	35.2	83.2	138.1	131.5	6.58	20.991		
1,600.0	1,595.9	1,586.4	1,582.1	3.7	3.7	146.51	44.7	90.8	156.2	149.1	7.08	22.073		
1,700.0	1,695.2	1,684.7	1,679.7	4.0	4.0	145.61	54.2	98.5	174.3	166.8	7.58	23.001		
1,800.0	1,794.5	1,783.0	1,777.2	4.3	4.3	144.88	63.7	106.1	192.5	184.4	8.09	23.804		
1,900.0	1,893.7	1,881.3	1,874.8	4.6	4.6	144.28	73.3	113.7	210.7	202.1	8.60	24.503		
2,000.0	1,993.0	1,979.6	1,972.3	4.9	4.9	143.77	82.8	121.3	228.9	219.8	9.12	25.116		
2,100.0	2,092.3	2,077.9	2,069.9	5.2	5.2	143.34	92.3	128.9	247.2	237.5	9.63	25.658		
2,200.0	2,191.6	2,176.2	2,167.4	5.5	5.5	142.96	101.8	136.5	265.4	255.3	10.15	26.140		
2,300.0	2,290.9	2,274.5	2,265.0	5.8	5.8	142.64	111.3	144.1	283.7	273.0	10.68	26.570		
2,400.0	2,390.1	2,372.8	2,362.5	6.1	6.1	142.35	120.8	151.8	301.9	290.7	11.20	26.957		
2,500.0	2,489.4	2,471.1	2,460.1	6.4	6.4	142.10	130.4	159.4	320.2	308.5	11.73	27.306		
2,600.0	2,588.7	2,569.4	2,557.6	6.7	6.7	141.87	139.9	167.0	338.5	326.2	12.25	27.623		
2,700.0	2,688.0	2,667.8	2,655.2	7.1	7.0	141.67	149.4	174.6	356.8	344.0	12.78	27.911		
2,800.0	2,787.3	2,766.1	2,752.7	7.4	7.3	141.49	158.9	182.2	375.0	361.7	13.31	28.175		
2,900.0	2,886.5	2,864.4	2,850.3	7.7	7.6	141.32	168.4	189.8	393.3	379.5	13.84	28.417		
3,000.0	2,985.8	2,962.7	2,947.8	8.0	7.9	141.17	178.0	197.4	411.6	397.2	14.37	28.639		
3,100.0	3,085.1	3,061.0	3,045.4	8.3	8.2	141.03	187.5	205.1	429.9	415.0	14.90	28.844		
3,200.0	3,184.4	3,159.3	3,142.9	8.6	8.5	140.90	197.0	212.7	448.2	432.8	15.44	29.035		
3,300.0	3,283.7	3,257.6	3,240.5	8.9	8.8	140.78	206.5	220.3	466.5	450.5	15.97	29.211		
3,400.0	3,382.9	3,355.9	3,338.0	9.2	9.1	140.68	216.0	227.9	484.8	468.3	16.50	29.375		
3,500.0	3,482.2	3,454.2	3,435.6	9.6	9.4	140.58	225.5	235.5	503.1	486.0	17.04	29.528		
3,600.0	3,581.5	3,552.5	3,533.1	9.9	9.8	140.48	235.1	243.1	521.4	503.8	17.57	29.672		
3,700.0	3,680.8	3,650.8	3,630.7	10.2	10.1	140.40	244.6	250.7	539.7	521.6	18.11	29.806		
3,800.0	3,780.1	3,749.1	3,728.2	10.5	10.4	140.31	254.1	258.4	558.0	539.3	18.64	29.932		
3,900.0	3,879.4	3,847.4	3,825.8	10.8	10.7	140.24	263.6	266.0	576.3	557.1	19.18	30.050		
4,000.0	3,978.6	3,945.8	3,923.3	11.1	11.0	140.17	273.1	273.6	594.6	574.9	19.71	30.161		
4,100.0	4,077.9	4,044.1	4,020.9	11.4	11.3	140.10	282.6	281.2	612.9	592.6	20.25	30.267		
4,200.0	4,177.2	4,142.4	4,118.4	11.8	11.6	140.04	292.2	288.8	631.2	610.4	20.79	30.366		
4,300.0	4,276.5	4,240.7	4,216.0	12.1	11.9	139.98	301.7	296.4	649.5	628.2	21.32	30.460		
4,400.0	4,375.8	4,339.0	4,313.5	12.4	12.2	139.92	311.2	304.0	667.8	646.0	21.86	30.549		
4,500.0	4,475.0	4,437.3	4,411.1	12.7	12.6	139.87	320.7	311.7	686.1	663.7	22.40	30.633		
4,600.0	4,574.3	4,535.6	4,508.6	13.0	12.9	139.81	330.2	319.3	704.4	681.5	22.94	30.714		
4,700.0	4,673.6	4,633.9	4,606.2	13.3	13.2	139.80	339.8	326.9	722.7	699.2	23.48	30.784		
4,800.0	4,773.1	4,746.7	4,718.1	13.5	13.5	139.87	349.9	335.0	738.7	714.7	23.99	30.788		
4,900.0	4,872.9	4,869.9	4,841.0	13.7	13.7	139.89	357.3	340.9	749.1	724.7	24.45	30.640		
5,000.0	4,972.9	4,994.0	4,965.1	13.9	14.0	139.90	360.6	343.6	753.7	728.9	24.85	30.334		
5,100.0	5,072.9	5,100.9	5,071.9	14.1	14.1	80.55	360.8	343.7	753.9	727.7	26.25	28.717		

CC - Min centre to center distance or convergent point, SF - min separation factor, ES - min ellipse separation

Company:	Synergy Resources	Local Co-ordinate Reference:	Well SRC Kelly Farms 22-4-3CHZ
Project:	SEC.4-T5N-R66W	TVD Reference:	WELL @ 4766.0ft (Original Well Elev)
Reference Site:	SRC Kelly Farms Pad Sec.4-T5N-R66W	MD Reference:	WELL @ 4766.0ft (Original Well Elev)
Site Error:	0.0ft	North Reference:	True
Reference Well:	SRC Kelly Farms 22-4-3CHZ	Survey Calculation Method:	Minimum Curvature
Well Error:	0.0ft	Output errors are at	2.00 sigma
Reference Wellbore	Wellbore #1	Database:	Landmark
Reference Design:	Plan #1 (5-20-13)	Offset TVD Reference:	Offset Datum

Offset Design		SRC Kelly Farms Pad Sec.4-T5N-R66W - SRC Northridge C-4-5NHZ - Wellbore #1 - Plan #1 (5-21-13)										Offset Site Error:		0.0 ft
Survey Program: 0-MWD												Offset Well Error:		0.0 ft
Reference		Offset		Semi Major Axis			Distance							Warning
Measured Depth (ft)	Vertical Depth (ft)	Measured Depth (ft)	Vertical Depth (ft)	Reference (ft)	Offset (ft)	Highside Toolface (°)	Offset Wellbore Centre +N/-S (ft)	+E/-W (ft)	Between Centres (ft)	Between Ellipses (ft)	Minimum Separation (ft)	Separation Factor		
5,200.0	5,172.9	5,200.9	5,171.9	14.2	14.3	80.55	360.8	343.7	753.9	727.3	26.63	28.316		
5,300.0	5,272.9	5,300.9	5,271.9	14.4	14.5	80.55	360.8	343.7	753.9	726.9	27.00	27.924		
5,400.0	5,372.9	5,400.9	5,371.9	14.6	14.6	80.55	360.8	343.7	753.9	726.6	27.38	27.540		
5,500.0	5,472.9	5,500.9	5,471.9	14.8	14.8	80.55	360.8	343.7	753.9	726.2	27.76	27.164		
5,600.0	5,572.9	5,600.9	5,571.9	14.9	15.0	80.55	360.8	343.7	753.9	725.8	28.14	26.796		
5,700.0	5,672.9	5,700.9	5,671.9	15.1	15.2	80.55	360.8	343.7	753.9	725.4	28.52	26.437		
5,800.0	5,772.9	5,800.9	5,771.9	15.3	15.4	80.55	360.8	343.7	753.9	725.0	28.90	26.085		
5,900.0	5,872.9	5,900.9	5,871.9	15.5	15.5	80.55	360.8	343.7	753.9	724.6	29.29	25.741		
6,000.0	5,972.9	6,000.9	5,971.9	15.7	15.7	80.55	360.8	343.7	753.9	724.3	29.68	25.404		
6,100.0	6,072.9	6,100.9	6,071.9	15.8	15.9	80.55	360.8	343.7	753.9	723.9	30.07	25.075		
6,200.0	6,172.9	6,200.9	6,171.9	16.0	16.1	80.55	360.8	343.7	753.9	723.5	30.46	24.752		
6,300.0	6,272.9	6,300.9	6,271.9	16.2	16.3	80.55	360.8	343.7	753.9	723.1	30.85	24.437		
6,400.0	6,372.9	7,492.5	7,033.0	16.4	22.6	2.39	391.6	-393.5	679.0	647.7	31.22	21.747		
6,500.0	6,472.9	7,492.5	7,033.0	16.6	22.6	2.39	391.6	-393.5	582.0	550.6	31.43	18.520		
6,600.0	6,572.8	7,489.3	7,033.0	16.7	22.6	-103.37	391.5	-390.4	486.4	449.0	37.40	13.005		
6,700.0	6,671.4	7,473.1	7,033.0	16.8	22.3	-116.77	390.8	-374.2	393.9	358.6	35.37	11.136		
6,800.0	6,766.7	7,427.0	7,031.7	16.8	21.4	-116.53	388.9	-328.1	307.1	272.4	34.65	8.862		
6,900.0	6,857.0	7,378.0	7,027.0	16.8	20.5	-111.48	386.8	-279.4	229.1	194.6	34.54	6.633		
7,000.0	6,940.5	7,328.7	7,019.0	16.7	19.7	-101.71	384.8	-230.8	169.3	134.3	35.00	4.835		
7,097.5	7,013.7	7,280.5	7,007.9	16.8	19.0	-87.34	382.8	-184.0	146.0	110.5	35.48	4.115 SF		
7,100.0	7,015.5	7,279.2	7,007.5	16.8	19.0	-86.91	382.8	-182.8	146.0	110.5	35.47	4.116		
7,200.0	7,080.5	7,229.7	6,992.8	17.0	18.3	-69.05	380.8	-135.5	169.7	135.2	34.52	4.916		
7,300.0	7,134.4	7,180.0	6,974.8	17.5	17.6	-52.37	378.9	-89.3	221.7	190.1	31.60	7.018		
7,400.0	7,176.1	7,130.3	6,953.6	18.4	17.1	-39.62	377.0	-44.4	283.5	255.5	27.96	10.137		
7,500.0	7,204.7	7,080.6	6,929.3	19.6	16.6	-30.72	375.2	-1.0	346.6	321.8	24.85	13.949		
7,600.0	7,219.7	7,030.8	6,902.1	21.2	16.5	-24.61	373.5	40.6	407.8	385.0	22.74	17.933		
7,700.0	7,222.0	6,981.5	6,872.3	22.9	16.5	-21.14	371.8	79.8	466.2	444.2	21.99	21.199		
7,800.0	7,222.0	6,936.4	6,842.7	24.9	16.5	-19.42	370.4	113.9	528.7	506.7	21.99	24.048		
7,900.0	7,222.0	6,900.0	6,817.3	27.0	16.5	-18.15	369.3	139.9	596.2	574.0	22.18	26.880		
8,000.0	7,222.0	6,850.0	6,780.4	29.2	16.5	-16.55	367.9	173.6	668.0	645.8	22.23	30.055		
8,100.0	7,222.0	6,827.4	6,762.9	31.5	16.5	-15.88	367.3	187.9	743.1	720.4	22.70	32.735		
8,200.0	7,222.0	6,800.0	6,741.2	33.9	16.5	-15.12	366.6	204.6	821.2	798.1	23.12	35.515		
8,300.0	7,222.0	6,772.0	6,718.3	36.3	16.6	-14.39	365.9	220.7	901.9	878.3	23.56	38.284		
8,400.0	7,222.0	6,750.0	6,699.9	38.8	16.6	-13.84	365.4	232.7	984.7	960.6	24.08	40.890		

Reference Depths are relative to WELL @ 4766.0ft (Original Well Elev)Coordinates are relative to: SRC Kelly Farms 22-4-3CHZ
Offset Depths are relative to Offset DatumCoordinate System is US State Plane 1983, Colorado Northern Zone
Central Meridian is -105.500000 °Grid Convergence at Surface is: 0.46°



Company:	Synergy Resources	Local Co-ordinate Reference:	Well SRC Kelly Farms 22-4-3CHZ
Project:	SEC.4-T5N-R66W	TVD Reference:	WELL @ 4766.0ft (Original Well Elev)
Reference Site:	SRC Kelly Farms Pad Sec.4-T5N-R66W	MD Reference:	WELL @ 4766.0ft (Original Well Elev)
Site Error:	0.0ft	North Reference:	True
Reference Well:	SRC Kelly Farms 22-4-3CHZ	Survey Calculation Method:	Minimum Curvature
Well Error:	0.0ft	Output errors are at	2.00 sigma
Reference Wellbore	Wellbore #1	Database:	Landmark
Reference Design:	Plan #1 (5-20-13)	Offset TVD Reference:	Offset Datum

Reference Depths are relative to WELL @ 4766.0ft (Original Well Elev) Coordinates are relative to: SRC Kelly Farms 22-4-3CHZ
Offset Depths are relative to Offset Datum Coordinate System is US State Plane 1983, Colorado Northern Zone
Central Meridian is -105.500000 ° Grid Convergence at Surface is: 0.46°

