

# Synergy Resources

Well Name: **SRC Kelly Farms 21-4-3NHZ #2**

Surface Location: SRC Kelly Farms Pad Sec.4-T5N-R66W  
North American Datum 1983 , US State Plane 1983 , Colorado Northern Zone

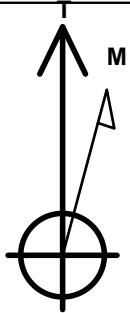
Ground Elevation: 4753.0

+N/-S	+E/-W	Northing	Easting	Latitude	Longitude	Slot
0.0	0.0	1400869.37	3199108.17	40.431584	-104.784755	

Original Well Elev WELL @ 4766.0ft (Original Well Elev)

## WELLBORE TARGET DETAILS

Name	TVD	+N/-S	+E/-W	Shape
SHL 2108'FNL & 2324'FWI, Sec. 4	1.0	0.0	0.0	Point
BHL 860'FNL & 2155'FWL, Sec. 3	7051.0	1248.0	5257.2	Point



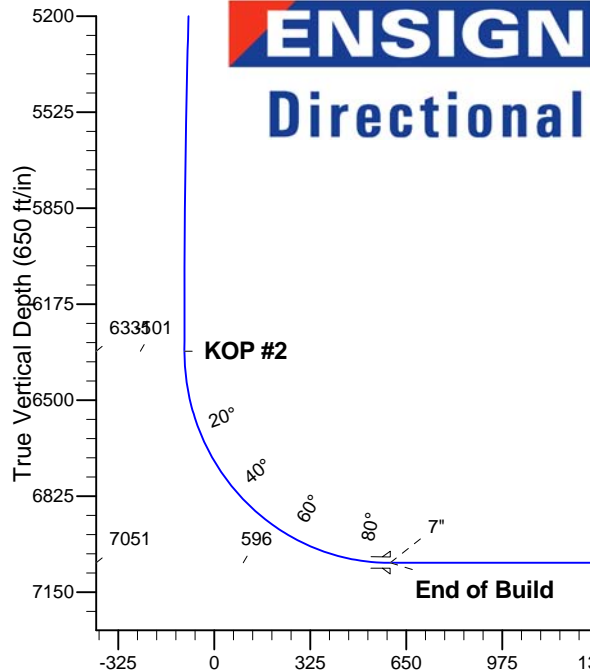
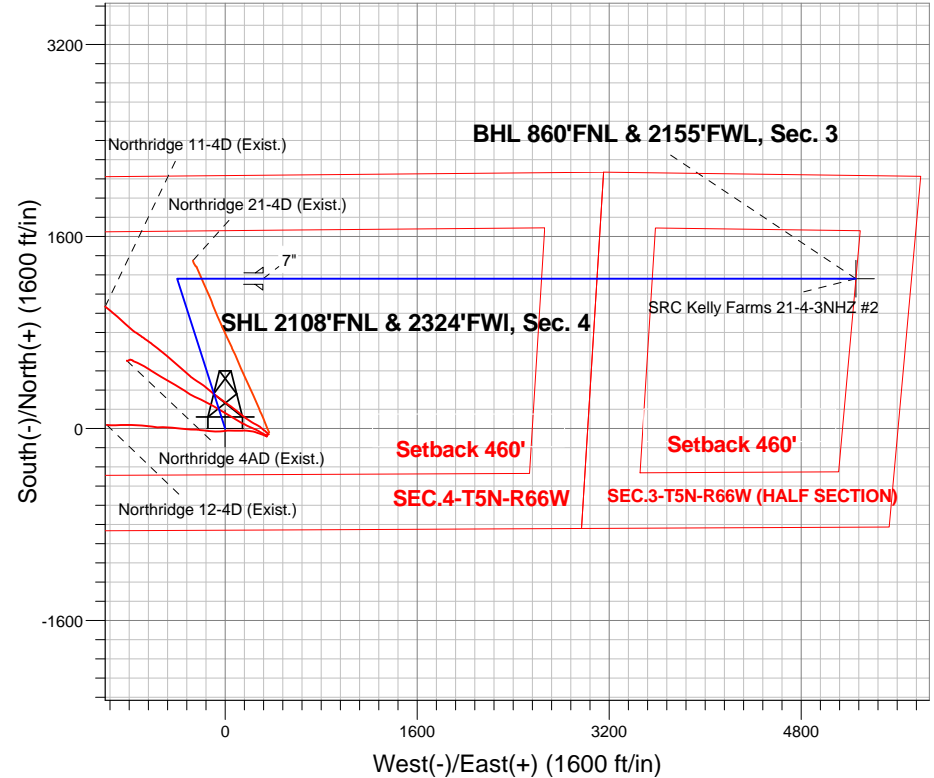
Azimuths to True North  
Magnetic North: 8.62°

Magnetic Field  
Strength: 52943.1srT  
Dip Angle: 67.01°  
Date: 5/20/2013  
Model: IGRF2010

SRC Kelly Farms Pad Sec.4-T5N-R66W  
SRC Kelly Farms 21-4-3NHZ #2  
Plan #1 (5-20-13)  
14:10, May 29 2013

## ANNOTATIONS

TVD	MD	Annotation
1400.0	1400.0	KOP
6334.8	6534.6	KOP #2
7051.0	7659.6	End of Build



## SECTION DETAILS

Sec	MD	Inc	Azi	TVD	+N/-S	+E/-W	DLeg	TFace	VSec	Target
1	0.0	0.00	0.00	0.0	0.0	0.0	0.00	0.00	0.0	
2	1400.0	0.00	0.00	1400.0	0.0	0.0	0.00	0.00	0.0	
3	2339.5	18.79	342.23	2322.7	145.4	-46.6	2.00	342.23	-11.8	
4	5460.3	18.79	342.23	5277.3	1102.6	-353.4	0.00	0.00	-89.2	
5	6399.8	0.00	0.00	6200.0	1248.0	-400.0	2.00	180.00	-100.9	
6	6534.6	0.00	0.00	6334.8	1248.0	-400.0	0.00	0.00	-100.9	
7	7659.6	90.00	90.00	7051.0	1248.0	316.2	8.00	90.00	595.9	
8	12600.6	90.00	90.00	7051.0	1248.0	5257.2	0.00	0.00	5403.3	BHL 860'FNL & 2155'FWL, Sec. 3

BHL 860'FNL & 2155'FWL, Sec. 3

Vertical Section at 76.65° (650 ft/in)



## **Synergy Resources**

**SEC.4-T5N-R66W**

**SRC Kelly Farms Pad Sec.4-T5N-R66W**

**SRC Kelly Farms 21-4-3NHZ #2**

**Wellbore #1**

**Plan: Plan #1 (5-20-13)**

## **Standard Planning Report**

**29 May, 2013**

Plan Sections										
Measured Depth (ft)	Inclination (°)	Azimuth (°)	Vertical Depth (ft)	+N/-S (ft)	+E/-W (ft)	Dogleg Rate (°/100ft)	Build Rate (°/100ft)	Turn Rate (°/100ft)	TFO (°)	Target
0.0	0.00	0.00	0.0	0.0	0.0	0.00	0.00	0.00	0.00	
1,400.0	0.00	0.00	1,400.0	0.0	0.0	0.00	0.00	0.00	0.00	
2,339.5	18.79	342.23	2,322.7	145.4	-46.6	2.00	2.00	0.00	342.23	
5,460.3	18.79	342.23	5,277.3	1,102.6	-353.4	0.00	0.00	0.00	0.00	
6,399.8	0.00	0.00	6,200.0	1,248.0	-400.0	2.00	-2.00	0.00	180.00	
6,534.6	0.00	0.00	6,334.8	1,248.0	-400.0	0.00	0.00	0.00	0.00	
7,659.6	90.00	90.00	7,051.0	1,248.0	316.2	8.00	8.00	0.00	90.00	
12,600.6	90.00	90.00	7,051.0	1,248.0	5,257.2	0.00	0.00	0.00	0.00	BHL 860'FNL & 215'

<b>Database:</b>	Landmark	<b>Local Co-ordinate Reference:</b>	Well SRC Kelly Farms 21-4-3NHZ #2
<b>Company:</b>	Synergy Resources	<b>TVD Reference:</b>	WELL @ 4766.0ft (Original Well Elev)
<b>Project:</b>	SEC.4-T5N-R66W	<b>MD Reference:</b>	WELL @ 4766.0ft (Original Well Elev)
<b>Site:</b>	SRC Kelly Farms Pad Sec.4-T5N-R66W	<b>North Reference:</b>	True
<b>Well:</b>	SRC Kelly Farms 21-4-3NHZ #2	<b>Survey Calculation Method:</b>	Minimum Curvature
<b>Wellbore:</b>	Wellbore #1		
<b>Design:</b>	Plan #1 (5-20-13)		

Planned Survey									
Measured Depth (ft)	Inclination (°)	Azimuth (°)	Vertical Depth (ft)	+N/-S (ft)	+E/-W (ft)	Vertical Section (ft)	Dogleg Rate (°/100ft)	Build Rate (°/100ft)	Turn Rate (°/100ft)
0.0	0.00	0.00	0.0	0.0	0.0	0.0	0.00	0.00	0.00
1.0	0.00	0.00	1.0	0.0	0.0	0.0	0.00	0.00	0.00
<b>SHL 2108'FNL &amp; 2324'FWI, Sec. 4</b>									
100.0	0.00	0.00	100.0	0.0	0.0	0.0	0.00	0.00	0.00
200.0	0.00	0.00	200.0	0.0	0.0	0.0	0.00	0.00	0.00
300.0	0.00	0.00	300.0	0.0	0.0	0.0	0.00	0.00	0.00
400.0	0.00	0.00	400.0	0.0	0.0	0.0	0.00	0.00	0.00
500.0	0.00	0.00	500.0	0.0	0.0	0.0	0.00	0.00	0.00
600.0	0.00	0.00	600.0	0.0	0.0	0.0	0.00	0.00	0.00
700.0	0.00	0.00	700.0	0.0	0.0	0.0	0.00	0.00	0.00
800.0	0.00	0.00	800.0	0.0	0.0	0.0	0.00	0.00	0.00
900.0	0.00	0.00	900.0	0.0	0.0	0.0	0.00	0.00	0.00
1,000.0	0.00	0.00	1,000.0	0.0	0.0	0.0	0.00	0.00	0.00
1,100.0	0.00	0.00	1,100.0	0.0	0.0	0.0	0.00	0.00	0.00
1,200.0	0.00	0.00	1,200.0	0.0	0.0	0.0	0.00	0.00	0.00
1,300.0	0.00	0.00	1,300.0	0.0	0.0	0.0	0.00	0.00	0.00
1,400.0	0.00	0.00	1,400.0	0.0	0.0	0.0	0.00	0.00	0.00
<b>KOP</b>									
1,500.0	2.00	342.23	1,500.0	1.7	-0.5	-0.1	2.00	2.00	0.00
1,600.0	4.00	342.23	1,599.8	6.6	-2.1	-0.5	2.00	2.00	0.00
1,700.0	6.00	342.23	1,699.5	14.9	-4.8	-1.2	2.00	2.00	0.00
1,800.0	8.00	342.23	1,798.7	26.5	-8.5	-2.1	2.00	2.00	0.00
1,900.0	10.00	342.23	1,897.5	41.4	-13.3	-3.4	2.00	2.00	0.00
2,000.0	12.00	342.23	1,995.6	59.6	-19.1	-4.8	2.00	2.00	0.00
2,100.0	14.00	342.23	2,093.1	81.0	-26.0	-6.6	2.00	2.00	0.00
2,200.0	16.00	342.23	2,189.6	105.7	-33.9	-8.5	2.00	2.00	0.00
2,300.0	18.00	342.23	2,285.3	133.5	-42.8	-10.8	2.00	2.00	0.00
2,339.5	18.79	342.23	2,322.7	145.4	-46.6	-11.8	2.00	2.00	0.00
2,400.0	18.79	342.23	2,380.0	163.9	-52.5	-13.3	0.00	0.00	0.00
2,500.0	18.79	342.23	2,474.7	194.6	-62.4	-15.7	0.00	0.00	0.00
2,600.0	18.79	342.23	2,569.4	225.3	-72.2	-18.2	0.00	0.00	0.00
2,700.0	18.79	342.23	2,664.0	256.0	-82.0	-20.7	0.00	0.00	0.00
2,800.0	18.79	342.23	2,758.7	286.6	-91.9	-23.2	0.00	0.00	0.00
2,900.0	18.79	342.23	2,853.4	317.3	-101.7	-25.7	0.00	0.00	0.00
3,000.0	18.79	342.23	2,948.1	348.0	-111.5	-28.1	0.00	0.00	0.00
3,100.0	18.79	342.23	3,042.7	378.7	-121.4	-30.6	0.00	0.00	0.00
3,200.0	18.79	342.23	3,137.4	409.3	-131.2	-33.1	0.00	0.00	0.00
3,300.0	18.79	342.23	3,232.1	440.0	-141.0	-35.6	0.00	0.00	0.00
3,400.0	18.79	342.23	3,326.7	470.7	-150.9	-38.1	0.00	0.00	0.00
3,500.0	18.79	342.23	3,421.4	501.3	-160.7	-40.5	0.00	0.00	0.00
3,600.0	18.79	342.23	3,516.1	532.0	-170.5	-43.0	0.00	0.00	0.00
3,700.0	18.79	342.23	3,610.7	562.7	-180.3	-45.5	0.00	0.00	0.00
3,800.0	18.79	342.23	3,705.4	593.4	-190.2	-48.0	0.00	0.00	0.00
3,900.0	18.79	342.23	3,800.1	624.0	-200.0	-50.5	0.00	0.00	0.00
4,000.0	18.79	342.23	3,894.8	654.7	-209.8	-53.0	0.00	0.00	0.00
4,100.0	18.79	342.23	3,989.4	685.4	-219.7	-55.4	0.00	0.00	0.00
4,200.0	18.79	342.23	4,084.1	716.0	-229.5	-57.9	0.00	0.00	0.00
4,300.0	18.79	342.23	4,178.8	746.7	-239.3	-60.4	0.00	0.00	0.00
4,400.0	18.79	342.23	4,273.4	777.4	-249.2	-62.9	0.00	0.00	0.00
4,500.0	18.79	342.23	4,368.1	808.1	-259.0	-65.4	0.00	0.00	0.00
4,600.0	18.79	342.23	4,462.8	838.7	-268.8	-67.8	0.00	0.00	0.00
4,700.0	18.79	342.23	4,557.5	869.4	-278.7	-70.3	0.00	0.00	0.00
4,800.0	18.79	342.23	4,652.1	900.1	-288.5	-72.8	0.00	0.00	0.00
4,900.0	18.79	342.23	4,746.8	930.7	-298.3	-75.3	0.00	0.00	0.00

<b>Database:</b>	Landmark	<b>Local Co-ordinate Reference:</b>	Well SRC Kelly Farms 21-4-3NHZ #2
<b>Company:</b>	Synergy Resources	<b>TVD Reference:</b>	WELL @ 4766.0ft (Original Well Elev)
<b>Project:</b>	SEC.4-T5N-R66W	<b>MD Reference:</b>	WELL @ 4766.0ft (Original Well Elev)
<b>Site:</b>	SRC Kelly Farms Pad Sec.4-T5N-R66W	<b>North Reference:</b>	True
<b>Well:</b>	SRC Kelly Farms 21-4-3NHZ #2	<b>Survey Calculation Method:</b>	Minimum Curvature
<b>Wellbore:</b>	Wellbore #1		
<b>Design:</b>	Plan #1 (5-20-13)		

Planned Survey									
Measured Depth (ft)	Inclination (°)	Azimuth (°)	Vertical Depth (ft)	+N/-S (ft)	+E/-W (ft)	Vertical Section (ft)	Dogleg Rate (°/100ft)	Build Rate (°/100ft)	Turn Rate (°/100ft)
5,000.0	18.79	342.23	4,841.5	961.4	-308.1	-77.8	0.00	0.00	0.00
5,100.0	18.79	342.23	4,936.1	992.1	-318.0	-80.2	0.00	0.00	0.00
5,200.0	18.79	342.23	5,030.8	1,022.8	-327.8	-82.7	0.00	0.00	0.00
5,300.0	18.79	342.23	5,125.5	1,053.4	-337.6	-85.2	0.00	0.00	0.00
5,400.0	18.79	342.23	5,220.2	1,084.1	-347.5	-87.7	0.00	0.00	0.00
5,460.3	18.79	342.23	5,277.3	1,102.6	-353.4	-89.2	0.00	0.00	0.00
5,500.0	18.00	342.23	5,314.9	1,114.5	-357.2	-90.1	2.00	-2.00	0.00
5,600.0	16.00	342.23	5,410.5	1,142.4	-366.1	-92.4	2.00	-2.00	0.00
5,700.0	14.00	342.23	5,507.1	1,167.0	-374.0	-94.4	2.00	-2.00	0.00
5,800.0	12.00	342.23	5,604.6	1,188.4	-380.9	-96.1	2.00	-2.00	0.00
5,900.0	10.00	342.23	5,702.7	1,206.6	-386.7	-97.6	2.00	-2.00	0.00
6,000.0	8.00	342.23	5,801.5	1,221.5	-391.5	-98.8	2.00	-2.00	0.00
6,100.0	6.00	342.23	5,900.7	1,233.1	-395.2	-99.7	2.00	-2.00	0.00
6,200.0	4.00	342.23	6,000.4	1,241.4	-397.9	-100.4	2.00	-2.00	0.00
6,300.0	2.00	342.23	6,100.2	1,246.3	-399.5	-100.8	2.00	-2.00	0.00
6,399.8	0.00	0.00	6,200.0	1,248.0	-400.0	-100.9	2.00	-2.00	0.00
6,400.0	0.00	0.00	6,200.2	1,248.0	-400.0	-100.9	0.00	0.00	0.00
6,500.0	0.00	0.00	6,300.2	1,248.0	-400.0	-100.9	0.00	0.00	0.00
6,534.6	0.00	0.00	6,334.8	1,248.0	-400.0	-100.9	0.00	0.00	0.00
<b>KOP #2</b>									
6,600.0	5.23	90.00	6,400.1	1,248.0	-397.0	-98.0	8.00	8.00	0.00
6,700.0	13.23	90.00	6,498.7	1,248.0	-381.0	-82.4	8.00	8.00	0.00
6,800.0	21.23	90.00	6,594.2	1,248.0	-351.4	-53.6	8.00	8.00	0.00
6,900.0	29.23	90.00	6,684.5	1,248.0	-308.8	-12.2	8.00	8.00	0.00
7,000.0	37.23	90.00	6,768.1	1,248.0	-254.0	41.1	8.00	8.00	0.00
7,100.0	45.23	90.00	6,843.3	1,248.0	-188.2	105.2	8.00	8.00	0.00
7,200.0	53.23	90.00	6,908.5	1,248.0	-112.5	178.8	8.00	8.00	0.00
7,300.0	61.23	90.00	6,962.6	1,248.0	-28.5	260.5	8.00	8.00	0.00
7,400.0	69.23	90.00	7,004.5	1,248.0	62.2	348.8	8.00	8.00	0.00
7,500.0	77.23	90.00	7,033.3	1,248.0	157.9	441.9	8.00	8.00	0.00
7,600.0	85.23	90.00	7,048.5	1,248.0	256.7	538.0	8.00	8.00	0.00
7,659.6	90.00	90.00	7,051.0	1,248.0	316.2	595.9	8.00	8.00	0.00
<b>End of Build - 7"</b>									
7,700.0	90.00	90.00	7,051.0	1,248.0	356.6	635.2	0.00	0.00	0.00
7,800.0	90.00	90.00	7,051.0	1,248.0	456.6	732.5	0.00	0.00	0.00
7,900.0	90.00	90.00	7,051.0	1,248.0	556.6	829.8	0.00	0.00	0.00
8,000.0	90.00	90.00	7,051.0	1,248.0	656.6	927.1	0.00	0.00	0.00
8,100.0	90.00	90.00	7,051.0	1,248.0	756.6	1,024.4	0.00	0.00	0.00
8,200.0	90.00	90.00	7,051.0	1,248.0	856.6	1,121.7	0.00	0.00	0.00
8,300.0	90.00	90.00	7,051.0	1,248.0	956.6	1,219.0	0.00	0.00	0.00
8,400.0	90.00	90.00	7,051.0	1,248.0	1,056.6	1,316.3	0.00	0.00	0.00
8,500.0	90.00	90.00	7,051.0	1,248.0	1,156.6	1,413.6	0.00	0.00	0.00
8,600.0	90.00	90.00	7,051.0	1,248.0	1,256.6	1,510.9	0.00	0.00	0.00
8,700.0	90.00	90.00	7,051.0	1,248.0	1,356.6	1,608.2	0.00	0.00	0.00
8,800.0	90.00	90.00	7,051.0	1,248.0	1,456.6	1,705.4	0.00	0.00	0.00
8,900.0	90.00	90.00	7,051.0	1,248.0	1,556.6	1,802.7	0.00	0.00	0.00
9,000.0	90.00	90.00	7,051.0	1,248.0	1,656.6	1,900.0	0.00	0.00	0.00
9,100.0	90.00	90.00	7,051.0	1,248.0	1,756.6	1,997.3	0.00	0.00	0.00
9,200.0	90.00	90.00	7,051.0	1,248.0	1,856.6	2,094.6	0.00	0.00	0.00
9,300.0	90.00	90.00	7,051.0	1,248.0	1,956.6	2,191.9	0.00	0.00	0.00
9,400.0	90.00	90.00	7,051.0	1,248.0	2,056.6	2,289.2	0.00	0.00	0.00
9,500.0	90.00	90.00	7,051.0	1,248.0	2,156.6	2,386.5	0.00	0.00	0.00
9,600.0	90.00	90.00	7,051.0	1,248.0	2,256.6	2,483.8	0.00	0.00	0.00
9,700.0	90.00	90.00	7,051.0	1,248.0	2,356.6	2,581.1	0.00	0.00	0.00

<b>Database:</b>	Landmark	<b>Local Co-ordinate Reference:</b>	Well SRC Kelly Farms 21-4-3NHZ #2
<b>Company:</b>	Synergy Resources	<b>TVD Reference:</b>	WELL @ 4766.0ft (Original Well Elev)
<b>Project:</b>	SEC.4-T5N-R66W	<b>MD Reference:</b>	WELL @ 4766.0ft (Original Well Elev)
<b>Site:</b>	SRC Kelly Farms Pad Sec.4-T5N-R66W	<b>North Reference:</b>	True
<b>Well:</b>	SRC Kelly Farms 21-4-3NHZ #2	<b>Survey Calculation Method:</b>	Minimum Curvature
<b>Wellbore:</b>	Wellbore #1		
<b>Design:</b>	Plan #1 (5-20-13)		

Planned Survey										
Measured Depth (ft)	Inclination (°)	Azimuth (°)	Vertical Depth (ft)	+N/-S (ft)	+E/-W (ft)	Vertical Section (ft)	Dogleg Rate (°/100ft)	Build Rate (°/100ft)	Turn Rate (°/100ft)	
9,800.0	90.00	90.00	7,051.0	1,248.0	2,456.6	2,678.4	0.00	0.00	0.00	
9,900.0	90.00	90.00	7,051.0	1,248.0	2,556.6	2,775.7	0.00	0.00	0.00	
10,000.0	90.00	90.00	7,051.0	1,248.0	2,656.6	2,873.0	0.00	0.00	0.00	
10,100.0	90.00	90.00	7,051.0	1,248.0	2,756.6	2,970.3	0.00	0.00	0.00	
10,200.0	90.00	90.00	7,051.0	1,248.0	2,856.6	3,067.6	0.00	0.00	0.00	
10,300.0	90.00	90.00	7,051.0	1,248.0	2,956.6	3,164.9	0.00	0.00	0.00	
10,400.0	90.00	90.00	7,051.0	1,248.0	3,056.6	3,262.2	0.00	0.00	0.00	
10,500.0	90.00	90.00	7,051.0	1,248.0	3,156.6	3,359.5	0.00	0.00	0.00	
10,600.0	90.00	90.00	7,051.0	1,248.0	3,256.6	3,456.8	0.00	0.00	0.00	
10,700.0	90.00	90.00	7,051.0	1,248.0	3,356.6	3,554.1	0.00	0.00	0.00	
10,800.0	90.00	90.00	7,051.0	1,248.0	3,456.6	3,651.4	0.00	0.00	0.00	
10,900.0	90.00	90.00	7,051.0	1,248.0	3,556.6	3,748.7	0.00	0.00	0.00	
11,000.0	90.00	90.00	7,051.0	1,248.0	3,656.6	3,846.0	0.00	0.00	0.00	
11,100.0	90.00	90.00	7,051.0	1,248.0	3,756.6	3,943.3	0.00	0.00	0.00	
11,200.0	90.00	90.00	7,051.0	1,248.0	3,856.6	4,040.6	0.00	0.00	0.00	
11,300.0	90.00	90.00	7,051.0	1,248.0	3,956.6	4,137.8	0.00	0.00	0.00	
11,400.0	90.00	90.00	7,051.0	1,248.0	4,056.6	4,235.1	0.00	0.00	0.00	
11,500.0	90.00	90.00	7,051.0	1,248.0	4,156.6	4,332.4	0.00	0.00	0.00	
11,600.0	90.00	90.00	7,051.0	1,248.0	4,256.6	4,429.7	0.00	0.00	0.00	
11,700.0	90.00	90.00	7,051.0	1,248.0	4,356.6	4,527.0	0.00	0.00	0.00	
11,800.0	90.00	90.00	7,051.0	1,248.0	4,456.6	4,624.3	0.00	0.00	0.00	
11,900.0	90.00	90.00	7,051.0	1,248.0	4,556.6	4,721.6	0.00	0.00	0.00	
12,000.0	90.00	90.00	7,051.0	1,248.0	4,656.6	4,818.9	0.00	0.00	0.00	
12,100.0	90.00	90.00	7,051.0	1,248.0	4,756.6	4,916.2	0.00	0.00	0.00	
12,200.0	90.00	90.00	7,051.0	1,248.0	4,856.6	5,013.5	0.00	0.00	0.00	
12,300.0	90.00	90.00	7,051.0	1,248.0	4,956.6	5,110.8	0.00	0.00	0.00	
12,400.0	90.00	90.00	7,051.0	1,248.0	5,056.6	5,208.1	0.00	0.00	0.00	
12,500.0	90.00	90.00	7,051.0	1,248.0	5,156.6	5,305.4	0.00	0.00	0.00	
12,600.0	90.00	90.00	7,051.0	1,248.0	5,256.6	5,402.7	0.00	0.00	0.00	
12,600.6	90.00	90.00	7,051.0	1,248.0	5,257.2	5,403.3	0.00	0.00	0.00	
BHL 860'FNL & 2155'FWL, Sec. 3										

Targets										
Target Name	Dip Angle (°)	Dip Dir. (°)	TVD (ft)	+N/-S (ft)	+E/-W (ft)	Northing (ft)	Easting (ft)	Latitude	Longitude	
- hit/miss target										
- Shape										
SHL 2108'FNL & 2324'	0.00	0.00	1.0	0.0	0.0	1,400,869.39	3,199,108.17	40.431584	-104.784755	
- plan hits target center										
- Point										
BHL 860'FNL & 2155'	0.00	0.00	7,051.0	1,248.0	5,257.2	1,402,159.67	3,204,354.89	40.435008	-104.765870	
- plan hits target center										
- Point										

Casing Points					
Measured Depth (ft)	Vertical Depth (ft)	Name	Casing Diameter (")	Hole Diameter (")	
7,659.6	7,051.0	7"	7	7-1/2	

<b>Database:</b>	Landmark	<b>Local Co-ordinate Reference:</b>	Well SRC Kelly Farms 21-4-3NHZ #2
<b>Company:</b>	Synergy Resources	<b>TVD Reference:</b>	WELL @ 4766.0ft (Original Well Elev)
<b>Project:</b>	SEC.4-T5N-R66W	<b>MD Reference:</b>	WELL @ 4766.0ft (Original Well Elev)
<b>Site:</b>	SRC Kelly Farms Pad Sec.4-T5N-R66W	<b>North Reference:</b>	True
<b>Well:</b>	SRC Kelly Farms 21-4-3NHZ #2	<b>Survey Calculation Method:</b>	Minimum Curvature
<b>Wellbore:</b>	Wellbore #1		
<b>Design:</b>	Plan #1 (5-20-13)		

Plan Annotations				
Measured Depth (ft)	Vertical Depth (ft)	Local Coordinates		Comment
		+N/-S (ft)	+E/-W (ft)	
1,400.0	1,400.0	0.0	0.0	KOP
6,534.6	6,334.8	1,248.0	-400.0	KOP #2
7,659.6	7,051.0	1,248.0	316.2	End of Build



## **Synergy Resources**

**SEC.4-T5N-R66W**

**SRC Kelly Farms Pad Sec.4-T5N-R66W**

**SRC Kelly Farms 21-4-3NHZ #2**

**Wellbore #1**

**Plan #1 (5-20-13)**

## **Anticollision Report**

**29 May, 2013**





<b>Company:</b>	Synergy Resources	<b>Local Co-ordinate Reference:</b>	Well SRC Kelly Farms 21-4-3NHZ #2
<b>Project:</b>	SEC.4-T5N-R66W	<b>TVD Reference:</b>	WELL @ 4766.0ft (Original Well Elev)
<b>Reference Site:</b>	SRC Kelly Farms Pad Sec.4-T5N-R66W	<b>MD Reference:</b>	WELL @ 4766.0ft (Original Well Elev)
<b>Site Error:</b>	0.0ft	<b>North Reference:</b>	True
<b>Reference Well:</b>	SRC Kelly Farms 21-4-3NHZ #2	<b>Survey Calculation Method:</b>	Minimum Curvature
<b>Well Error:</b>	0.0ft	<b>Output errors are at</b>	2.00 sigma
<b>Reference Wellbore</b>	Wellbore #1	<b>Database:</b>	Landmark
<b>Reference Design:</b>	Plan #1 (5-20-13)	<b>Offset TVD Reference:</b>	Offset Datum

Offset Design Northridge Pad Sec.4-T5N-R66W - Northridge 11-4D (Exist.) - Wellbore #1 - Wellbore #1													Offset Site Error:	0.0 ft
Survey Program: 147-MWD													Offset Well Error:	0.0 ft
Reference		Offset		Semi Major Axis			Distance							Warning
Measured Depth (ft)	Vertical Depth (ft)	Measured Depth (ft)	Vertical Depth (ft)	Reference (ft)	Offset (ft)	Highside Toolface (°)	Offset Wellbore Centre +N/-S (ft)	+E/-W (ft)	Between Centres (ft)	Between Ellipses (ft)	Minimum Separation (ft)	Separation Factor		
800.0	800.0	836.5	830.8	1.7	2.1	90.05	-0.3	306.0	309.1	305.6	3.49	88.637		
900.0	900.0	945.1	937.2	1.9	2.5	87.17	14.3	289.2	293.9	289.9	4.02	73.102		
1,000.0	1,000.0	1,057.5	1,046.4	2.1	3.0	84.08	27.6	266.5	274.5	269.9	4.60	59.665		
1,100.0	1,100.0	1,161.0	1,145.9	2.4	3.6	80.37	40.9	241.2	251.7	246.5	5.20	48.414		
1,200.0	1,200.0	1,260.6	1,240.5	2.6	4.2	75.20	56.7	214.4	228.1	222.2	5.88	38.796		
1,300.0	1,300.0	1,355.9	1,329.9	2.8	4.8	68.17	74.9	186.8	205.8	199.1	6.70	30.713		
1,400.0	1,400.0	1,446.4	1,413.9	3.0	5.5	59.33	94.8	159.9	187.9	180.2	7.70	24.395		
1,500.0	1,500.0	1,539.8	1,499.8	3.3	6.2	66.47	118.2	131.4	176.5	167.2	9.36	18.866		
1,600.0	1,599.8	1,634.5	1,586.3	3.5	7.0	55.21	142.0	101.3	170.4	159.9	10.45	16.308		
1,660.3	1,660.0	1,690.2	1,636.8	3.6	7.5	48.38	156.5	82.7	169.2	158.2	11.04	15.331 CC, ES		
1,700.0	1,699.5	1,726.7	1,669.8	3.7	7.8	43.97	166.2	70.4	169.7	158.3	11.39	14.904		
1,800.0	1,798.7	1,825.6	1,759.2	4.0	8.6	32.62	191.5	36.5	173.0	160.9	12.11	14.289		
1,900.0	1,897.5	1,918.4	1,842.8	4.2	9.4	22.71	214.2	3.5	178.5	165.9	12.57	14.201 SF		
2,000.0	1,995.6	2,009.7	1,924.7	4.5	10.2	13.92	238.0	-29.1	187.8	175.0	12.85	14.621		
2,100.0	2,093.1	2,109.3	2,014.2	4.8	11.1	5.65	264.2	-64.3	198.4	185.4	12.96	15.304		
2,200.0	2,189.6	2,198.8	2,094.3	5.2	11.9	-1.09	287.7	-96.4	209.3	196.3	13.02	16.078		
2,300.0	2,285.3	2,289.5	2,174.8	5.6	12.7	-6.85	314.5	-128.5	222.7	209.7	13.08	17.025		
2,400.0	2,380.0	2,396.1	2,269.9	6.1	13.6	-12.67	346.2	-164.8	235.0	221.8	13.22	17.780		
2,500.0	2,474.7	2,498.0	2,361.9	6.6	14.5	-18.59	371.2	-200.7	245.5	232.0	13.42	18.293		
2,600.0	2,569.4	2,589.0	2,443.9	7.1	15.3	-23.69	393.0	-233.8	258.6	244.8	13.76	18.790		
2,700.0	2,664.0	2,684.1	2,529.1	7.7	16.2	-28.26	417.1	-268.2	274.7	260.5	14.28	19.235		
2,800.0	2,758.7	2,768.0	2,603.5	8.3	17.0	-31.45	441.1	-298.6	294.6	279.7	14.92	19.742		
2,900.0	2,853.4	2,851.6	2,676.0	8.8	17.8	-33.85	468.6	-330.0	319.4	303.7	15.67	20.377		
3,000.0	2,948.1	2,950.3	2,760.4	9.4	18.9	-36.13	502.7	-368.0	346.7	330.1	16.57	20.929		
3,100.0	3,042.7	3,069.9	2,865.6	10.0	20.0	-38.85	539.6	-411.2	369.9	352.3	17.64	20.968		
3,200.0	3,137.4	3,164.5	2,949.8	10.6	20.8	-40.68	568.1	-443.6	391.5	372.9	18.64	21.002		
3,300.0	3,232.1	3,267.7	3,041.8	11.2	21.8	-42.45	599.3	-478.6	413.2	393.5	19.74	20.931		
3,400.0	3,326.7	3,385.6	3,148.9	11.8	22.7	-44.69	630.5	-516.7	432.0	411.0	21.02	20.552		
3,500.0	3,421.4	3,480.3	3,236.3	12.5	23.5	-46.64	652.3	-545.8	448.0	425.8	22.23	20.158		
3,600.0	3,516.1	3,574.6	3,322.4	13.1	24.2	-48.27	676.1	-576.1	466.8	443.3	23.44	19.912		
3,700.0	3,610.7	3,685.8	3,424.5	13.7	25.1	-50.01	703.7	-610.2	484.4	459.6	24.80	19.529		
3,800.0	3,705.4	3,799.0	3,530.2	14.3	25.9	-51.99	728.2	-642.6	499.2	472.9	26.26	19.008		
3,900.0	3,800.1	3,893.0	3,618.5	14.9	26.5	-53.70	746.8	-668.8	513.1	485.5	27.61	18.587		
4,000.0	3,894.8	3,960.3	3,680.9	15.6	27.0	-54.83	761.0	-689.6	530.9	502.1	28.75	18.465		
4,100.0	3,989.4	4,041.1	3,754.0	16.2	27.7	-55.88	780.8	-717.7	553.8	523.8	29.97	18.477		
4,200.0	4,084.1	4,123.8	3,828.3	16.8	28.5	-56.91	801.1	-747.8	578.7	547.4	31.24	18.523		
4,300.0	4,178.8	4,206.5	3,901.1	17.5	29.3	-57.62	824.2	-779.5	606.5	574.1	32.45	18.689		
4,400.0	4,273.4	4,307.0	3,988.1	18.1	30.3	-57.90	857.4	-817.3	635.1	601.4	33.68	18.855		
4,500.0	4,368.1	4,443.9	4,108.6	18.7	31.6	-58.33	901.2	-865.1	660.9	625.8	35.16	18.799		
4,600.0	4,462.8	4,556.0	4,210.7	19.4	32.5	-59.04	931.9	-899.8	681.1	644.6	36.56	18.632		
4,700.0	4,557.5	4,649.0	4,295.6	20.0	33.3	-59.63	957.0	-928.3	701.1	663.3	37.82	18.539		
4,800.0	4,652.1	4,738.1	4,376.6	20.6	34.0	-60.17	981.1	-956.7	722.5	683.4	39.07	18.493		
4,900.0	4,746.8	4,833.8	4,463.5	21.3	34.8	-60.77	1,006.4	-987.9	744.5	704.1	40.38	18.438		
5,000.0	4,841.5	4,925.5	4,546.4	21.9	35.6	-61.26	1,031.4	-1,018.0	767.0	725.4	41.65	18.417		
5,100.0	4,936.1	5,009.3	4,621.6	22.6	36.4	-61.61	1,055.2	-1,046.3	790.8	747.9	42.84	18.460		
5,200.0	5,030.8	5,090.4	4,693.9	23.2	37.1	-61.97	1,077.8	-1,075.1	816.3	772.3	44.03	18.539		
5,300.0	5,125.5	5,175.0	4,768.5	23.8	38.0	-62.25	1,102.6	-1,106.3	843.6	798.4	45.23	18.650		
5,400.0	5,220.2	5,269.2	4,850.9	24.5	38.9	-62.46	1,131.3	-1,141.7	871.7	825.3	46.47	18.757		
5,500.0	5,314.9	5,361.5	4,932.3	25.1	39.8	-62.99	1,157.5	-1,176.7	900.0	852.2	47.77	18.838		
5,600.0	5,410.5	5,452.3	5,012.4	25.6	40.7	-63.82	1,181.5	-1,211.9	930.1	881.1	49.02	18.975		
5,700.0	5,507.1	5,541.0	5,090.8	26.0	41.5	-64.54	1,204.0	-1,246.7	962.1	911.9	50.17	19.179		
5,800.0	5,604.6	5,635.4	5,174.5	26.4	42.4	-65.26	1,225.9	-1,284.8	996.1	944.9	51.28	19.427		

CC - Min centre to center distance or convergent point, SF - min separation factor, ES - min ellipse separation

<b>Company:</b>	Synergy Resources	<b>Local Co-ordinate Reference:</b>	Well SRC Kelly Farms 21-4-3NHZ #2
<b>Project:</b>	SEC.4-T5N-R66W	<b>TVD Reference:</b>	WELL @ 4766.0ft (Original Well Elev)
<b>Reference Site:</b>	SRC Kelly Farms Pad Sec.4-T5N-R66W	<b>MD Reference:</b>	WELL @ 4766.0ft (Original Well Elev)
<b>Site Error:</b>	0.0ft	<b>North Reference:</b>	True
<b>Reference Well:</b>	SRC Kelly Farms 21-4-3NHZ #2	<b>Survey Calculation Method:</b>	Minimum Curvature
<b>Well Error:</b>	0.0ft	<b>Output errors are at</b>	2.00 sigma
<b>Reference Wellbore</b>	Wellbore #1	<b>Database:</b>	Landmark
<b>Reference Design:</b>	Plan #1 (5-20-13)	<b>Offset TVD Reference:</b>	Offset Datum

Northridge Pad Sec.4-T5N-R66W - Northridge 12-4D (Exist.) - Wellbore #1 - Wellbore #1													Offset Site Error:	0.0 ft
Survey Program: 182-MWD													Offset Well Error:	0.0 ft
Reference		Offset		Semi Major Axis			Distance							Warning
Measured Depth	Vertical Depth	Measured Depth	Vertical Depth	Reference	Offset	Highside Toolface	Offset Wellbore Centre		Between Centres	Between Ellipses	Minimum Separation	Separation Factor		
Depth (ft)	Depth (ft)	Depth (ft)	Depth (ft)	(ft)	(ft)	(°)	+N/-S (ft)	+E/-W (ft)	(ft)	(ft)	(ft)			
0.0	0.0	0.0	0.0	0.0	0.0	100.90	-67.0	348.0	354.6					
100.0	100.0	87.6	87.6	0.1	0.1	100.89	-67.0	348.1	354.4	354.2	0.21	1,680.938		
200.0	200.0	187.2	187.2	0.3	0.2	100.86	-66.8	348.3	354.6	354.1	0.55	642.253		
300.0	300.0	289.9	289.9	0.6	0.4	100.96	-67.4	348.1	354.6	353.6	0.99	359.671		
400.0	400.0	402.7	402.7	0.8	0.7	100.87	-66.4	346.0	352.6	351.2	1.45	243.509		
500.0	500.0	527.6	527.1	1.0	1.0	100.47	-62.3	337.2	345.1	343.2	1.97	175.408		
600.0	600.0	636.9	635.5	1.2	1.3	99.97	-56.9	323.5	331.8	329.4	2.46	134.809		
700.0	700.0	743.2	740.4	1.5	1.6	99.24	-50.1	307.9	316.3	313.4	2.94	107.597		
800.0	800.0	844.3	840.0	1.7	2.0	98.60	-44.1	291.5	299.4	296.0	3.40	88.085		
900.0	900.0	948.5	942.4	1.9	2.4	98.01	-38.4	273.1	281.1	277.3	3.87	72.617		
1,000.0	1,000.0	1,048.9	1,040.7	2.1	2.8	97.13	-31.7	253.9	261.3	256.9	4.35	60.129		
1,100.0	1,100.0	1,146.2	1,135.9	2.4	3.2	96.42	-26.4	234.9	241.2	236.4	4.80	50.262		
1,200.0	1,200.0	1,250.9	1,238.3	2.6	3.6	96.04	-22.5	212.9	219.9	214.7	5.29	41.606		
1,300.0	1,300.0	1,354.0	1,338.2	2.8	4.1	95.92	-19.5	187.8	195.4	189.6	5.80	33.684		
1,400.0	1,400.0	1,447.8	1,429.0	3.0	4.6	96.38	-18.4	164.3	170.3	164.1	6.28	27.126		
1,500.0	1,500.0	1,542.2	1,520.8	3.3	5.0	116.51	-19.4	142.8	148.5	141.8	6.68	22.230		
1,600.0	1,599.8	1,645.8	1,621.1	3.5	5.5	120.87	-19.1	116.9	126.3	119.1	7.17	17.617		
1,700.0	1,699.5	1,744.2	1,715.7	3.7	6.0	128.74	-19.1	89.7	104.3	96.6	7.76	13.452		
1,800.0	1,798.7	1,842.3	1,809.4	4.0	6.6	142.13	-18.7	60.4	85.5	76.8	8.68	9.855		
1,900.0	1,897.5	1,937.4	1,899.7	4.2	7.2	161.87	-18.1	30.4	75.2	65.1	10.13	7.423		
1,911.9	1,909.2	1,948.4	1,910.0	4.2	7.3	164.52	-18.3	26.9	75.1	64.7	10.33	7.269 CC, ES		
2,000.0	1,995.6	2,030.0	1,987.3	4.5	7.8	-176.14	-20.7	0.9	82.8	71.1	11.68	7.089 SF		
2,100.0	2,093.1	2,124.6	2,076.7	4.8	8.4	-159.29	-23.9	-29.9	105.1	92.3	12.79	8.219		
2,200.0	2,189.6	2,219.1	2,164.9	5.2	9.0	-147.59	-25.3	-63.7	134.9	121.3	13.61	9.915		
2,300.0	2,285.3	2,315.4	2,254.8	5.6	9.7	-140.28	-25.4	-98.4	169.4	155.0	14.34	11.809		
2,400.0	2,380.0	2,414.8	2,348.2	6.1	10.3	-136.17	-22.1	-132.3	203.4	188.2	15.17	13.410		
2,500.0	2,474.7	2,507.7	2,435.9	6.6	10.9	-133.82	-18.2	-162.9	236.8	220.8	16.05	14.752		
2,600.0	2,569.4	2,599.4	2,521.8	7.1	11.5	-131.83	-14.8	-194.4	271.7	254.7	16.99	15.994		
2,700.0	2,664.0	2,688.2	2,604.8	7.7	12.2	-130.13	-11.2	-225.8	307.1	289.1	17.96	17.094		
2,800.0	2,758.7	2,769.0	2,679.1	8.3	12.8	-128.43	-9.0	-257.6	345.6	326.6	18.93	18.252		
2,900.0	2,853.4	2,853.7	2,755.5	8.8	13.6	-126.57	-7.1	-293.9	386.7	366.8	19.97	19.367		
3,000.0	2,948.1	2,950.6	2,843.4	9.4	14.4	-124.99	-5.4	-334.7	428.2	407.1	21.07	20.321		
3,100.0	3,042.7	3,049.5	2,933.3	10.0	15.2	-123.58	-1.5	-375.8	467.7	445.5	22.19	21.075		
3,200.0	3,137.4	3,134.5	3,009.8	10.6	16.0	-122.31	2.7	-412.7	507.9	484.6	23.27	21.826		
3,300.0	3,232.1	3,235.1	3,101.4	11.2	16.8	-121.36	6.3	-454.0	547.9	523.4	24.43	22.430		
3,400.0	3,326.7	3,331.6	3,190.3	11.8	17.5	-120.75	10.2	-491.5	586.2	560.6	25.52	22.965		
3,500.0	3,421.4	3,409.8	3,262.7	12.5	18.1	-120.53	11.1	-521.0	625.9	599.3	26.52	23.604		
3,600.0	3,516.1	3,567.1	3,411.7	13.1	19.1	-121.09	8.9	-570.9	665.2	637.4	27.84	23.894		
3,700.0	3,610.7	3,672.7	3,513.9	13.7	19.6	-121.62	13.3	-597.1	694.7	665.9	28.88	24.058		
3,800.0	3,705.4	3,766.8	3,605.1	14.3	20.1	-122.11	16.5	-620.0	724.8	694.9	29.87	24.266		
3,900.0	3,800.1	3,842.2	3,677.6	14.9	20.5	-122.33	19.5	-640.4	756.1	725.3	30.81	24.543		
4,000.0	3,894.8	3,917.4	3,749.1	15.6	21.0	-122.36	22.0	-663.6	789.9	758.2	31.77	24.867		
4,100.0	3,989.4	3,993.1	3,820.5	16.2	21.5	-122.31	24.0	-688.7	825.9	793.1	32.75	25.218		
4,200.0	4,084.1	4,069.8	3,892.2	16.8	22.1	-122.18	25.3	-716.0	863.8	830.1	33.76	25.590		
4,300.0	4,178.8	4,156.1	3,972.2	17.5	22.7	-121.95	26.8	-748.3	902.9	868.1	34.84	25.919		
4,400.0	4,273.4	4,260.0	4,068.8	18.1	23.5	-121.75	28.4	-786.4	941.6	905.6	35.99	26.163		
4,500.0	4,368.1	4,355.9	4,159.2	18.7	24.1	-121.77	28.9	-818.6	979.3	942.3	37.06	26.426		

<b>Company:</b>	Synergy Resources	<b>Local Co-ordinate Reference:</b>	Well SRC Kelly Farms 21-4-3NHZ #2
<b>Project:</b>	SEC.4-T5N-R66W	<b>TVD Reference:</b>	WELL @ 4766.0ft (Original Well Elev)
<b>Reference Site:</b>	SRC Kelly Farms Pad Sec.4-T5N-R66W	<b>MD Reference:</b>	WELL @ 4766.0ft (Original Well Elev)
<b>Site Error:</b>	0.0ft	<b>North Reference:</b>	True
<b>Reference Well:</b>	SRC Kelly Farms 21-4-3NHZ #2	<b>Survey Calculation Method:</b>	Minimum Curvature
<b>Well Error:</b>	0.0ft	<b>Output errors are at</b>	2.00 sigma
<b>Reference Wellbore</b>	Wellbore #1	<b>Database:</b>	Landmark
<b>Reference Design:</b>	Plan #1 (5-20-13)	<b>Offset TVD Reference:</b>	Offset Datum

Offset Design Northridge Pad Sec.4-T5N-R66W - Northridge 21-4D (Exist.) - Wellbore #1 - Wellbore #1													Offset Site Error:	0.0 ft
Survey Program: 150-MWD													Offset Well Error:	0.0 ft
Reference	Offset	Semi Major Axis		Distance										Warning
Measured Depth (ft)	Vertical Depth (ft)	Measured Depth (ft)	Vertical Depth (ft)	Reference (ft)	Offset (ft)	Highside Toolface (°)	Offset Wellbore Centre +N/-S (ft)	+E/-W (ft)	Between Centres (ft)	Between Ellipses (ft)	Minimum Separation (ft)	Separation Factor		
0.0	0.0	0.0	0.0	0.0	0.0	95.57	-35.7	365.8	367.8					
100.0	100.0	85.9	85.9	0.1	0.1	95.53	-35.4	366.0	367.7	367.5	0.21	1,757.976		
200.0	200.0	187.4	187.4	0.3	0.3	95.35	-34.3	366.4	368.0	367.4	0.59	623.932		
300.0	300.0	296.1	296.0	0.6	0.5	94.69	-30.0	365.5	366.9	365.8	1.07	344.104		
400.0	400.0	403.9	403.5	0.8	0.8	93.46	-21.9	362.2	363.2	361.7	1.56	233.187		
500.0	500.0	508.6	507.5	1.0	1.1	91.87	-11.6	357.3	358.1	356.0	2.06	174.153		
600.0	600.0	611.1	609.0	1.2	1.4	89.73	1.6	351.3	352.0	349.4	2.58	136.568		
700.0	700.0	709.7	706.2	1.5	1.7	87.23	16.7	345.2	346.1	343.0	3.12	111.027		
800.0	800.0	809.5	804.6	1.7	2.1	84.54	32.4	338.9	340.9	337.2	3.68	92.648		
900.0	900.0	911.2	904.3	1.9	2.5	81.28	50.9	331.4	335.7	331.4	4.30	78.098		
1,000.0	1,000.0	1,010.7	1,001.0	2.1	3.0	77.31	72.6	322.5	330.9	325.9	4.98	66.440		
1,100.0	1,100.0	1,112.4	1,098.8	2.4	3.5	72.53	98.2	311.9	327.2	321.4	5.75	56.922		
1,200.0	1,200.0	1,208.3	1,190.1	2.6	4.1	67.40	124.7	299.6	324.5	317.9	6.56	49.496		
1,223.6	1,223.6	1,229.9	1,210.6	2.6	4.2	66.16	131.1	296.7	324.4	317.6	6.75	48.075		
1,300.0	1,300.0	1,298.8	1,275.4	2.8	4.6	62.08	152.4	287.6	325.7	318.3	7.39	44.077		
1,400.0	1,400.0	1,392.4	1,363.4	3.0	5.2	56.52	182.3	275.6	331.3	323.1	8.23	40.258		
1,500.0	1,500.0	1,490.7	1,456.0	3.3	5.8	68.92	212.7	262.9	339.0	330.1	8.92	38.019		
1,600.0	1,599.8	1,589.7	1,549.5	3.5	6.4	64.30	242.4	249.5	346.9	337.3	9.59	36.163		
1,700.0	1,699.5	1,687.6	1,642.2	3.7	6.9	60.56	270.8	236.4	354.4	344.2	10.24	34.618		
1,800.0	1,798.7	1,787.3	1,736.9	4.0	7.5	57.49	299.2	223.5	361.3	350.4	10.89	33.182		
1,900.0	1,897.5	1,887.1	1,832.1	4.2	8.0	55.20	326.5	211.1	366.6	355.0	11.55	31.749		
2,000.0	1,995.6	1,987.3	1,928.0	4.5	8.6	53.57	353.3	199.3	370.1	357.9	12.23	30.268		
2,100.0	2,093.1	2,089.8	2,026.2	4.8	9.1	52.49	379.9	187.4	371.2	358.2	12.96	28.650		
2,200.0	2,189.6	2,188.8	2,120.9	5.2	9.7	51.75	406.1	175.0	370.1	356.4	13.72	26.967		
2,300.0	2,285.3	2,290.9	2,218.6	5.6	10.2	51.49	432.6	162.2	366.5	352.0	14.56	25.170		
2,400.0	2,380.0	2,388.4	2,312.2	6.1	10.8	51.76	457.4	151.0	361.3	345.9	15.45	23.391		
2,500.0	2,474.7	2,484.6	2,404.4	6.6	11.3	51.97	482.7	140.2	356.8	340.4	16.37	21.801		
2,600.0	2,569.4	2,583.2	2,498.4	7.1	11.9	51.95	510.2	128.4	353.2	335.9	17.32	20.392		
2,700.0	2,664.0	2,681.8	2,592.2	7.7	12.5	51.80	537.9	115.8	349.4	331.1	18.30	19.099		
2,800.0	2,758.7	2,775.8	2,680.8	8.3	13.0	51.35	566.5	103.2	347.2	328.0	19.25	18.042		
2,900.0	2,853.4	2,878.2	2,777.1	8.8	13.7	50.75	598.5	89.3	345.8	325.6	20.23	17.092		
3,000.0	2,948.1	2,982.4	2,875.9	9.4	14.3	50.47	628.7	75.9	342.7	321.5	21.24	16.134		
3,100.0	3,042.7	3,078.6	2,967.0	10.0	14.9	50.13	656.8	63.2	339.6	317.4	22.21	15.293		
3,200.0	3,137.4	3,184.0	3,066.7	10.6	15.6	49.70	688.2	49.2	337.1	313.9	23.21	14.526		
3,300.0	3,232.1	3,286.5	3,164.5	11.2	16.2	49.64	716.0	36.4	332.6	308.4	24.21	13.738		
3,400.0	3,326.7	3,386.0	3,259.7	11.8	16.7	49.78	742.3	24.8	328.0	302.7	25.22	13.003		
3,500.0	3,421.4	3,492.3	3,361.8	12.5	17.3	50.06	769.3	12.5	322.5	296.2	26.28	12.268		
3,600.0	3,516.1	3,595.1	3,461.0	13.1	17.8	50.58	793.5	0.9	315.4	288.1	27.36	11.531		
3,700.0	3,610.7	3,694.7	3,557.4	13.7	18.3	51.19	816.2	-10.4	307.9	279.4	28.43	10.828		
3,800.0	3,705.4	3,789.6	3,649.1	14.3	18.8	51.82	838.4	-20.6	301.1	271.6	29.51	10.204		
3,900.0	3,800.1	3,882.4	3,737.7	14.9	19.3	51.86	863.4	-31.8	296.7	266.1	30.52	9.721		
4,000.0	3,894.8	3,978.8	3,828.7	15.6	19.9	51.29	892.2	-45.3	293.8	262.3	31.47	9.335		
4,100.0	3,989.4	4,074.7	3,918.5	16.2	20.6	50.43	922.8	-59.1	292.4	260.1	32.37	9.035		
4,200.0	4,084.1	4,176.7	4,014.2	16.8	21.2	49.64	955.5	-72.8	291.7	258.4	33.28	8.767		
4,300.0	4,178.8	4,280.8	4,113.1	17.5	21.8	49.53	985.4	-85.0	289.1	254.8	34.30	8.428		
4,400.0	4,273.4	4,377.7	4,205.4	18.1	22.4	49.56	1,013.2	-95.7	286.7	251.4	35.32	8.116		
4,500.0	4,368.1	4,476.7	4,299.1	18.7	23.0	49.31	1,043.0	-107.1	285.4	249.1	36.30	7.861		
4,600.0	4,462.8	4,577.8	4,394.6	19.4	23.7	48.90	1,073.6	-119.7	283.7	246.4	37.25	7.615		
4,685.5	4,543.7	4,658.2	4,470.2	19.9	24.2	48.37	1,098.6	-130.3	282.6	244.6	37.99	7.437		
4,700.0	4,557.5	4,671.3	4,482.5	20.0	24.3	48.27	1,102.9	-132.0	282.6	244.5	38.11	7.415		
4,800.0	4,652.1	4,777.9	4,582.1	20.6	25.0	47.28	1,138.2	-146.5	283.1	244.1	38.94	7.270		
4,900.0	4,746.8	4,878.8	4,676.9	21.3	25.6	46.38	1,169.1	-161.4	280.7	240.9	39.72	7.065		

CC - Min centre to center distance or convergent point, SF - min separation factor, ES - min ellipse separation

<b>Company:</b>	Synergy Resources	<b>Local Co-ordinate Reference:</b>	Well SRC Kelly Farms 21-4-3NHZ #2
<b>Project:</b>	SEC.4-T5N-R66W	<b>TVD Reference:</b>	WELL @ 4766.0ft (Original Well Elev)
<b>Reference Site:</b>	SRC Kelly Farms Pad Sec.4-T5N-R66W	<b>MD Reference:</b>	WELL @ 4766.0ft (Original Well Elev)
<b>Site Error:</b>	0.0ft	<b>North Reference:</b>	True
<b>Reference Well:</b>	SRC Kelly Farms 21-4-3NHZ #2	<b>Survey Calculation Method:</b>	Minimum Curvature
<b>Well Error:</b>	0.0ft	<b>Output errors are at</b>	2.00 sigma
<b>Reference Wellbore</b>	Wellbore #1	<b>Database:</b>	Landmark
<b>Reference Design:</b>	Plan #1 (5-20-13)	<b>Offset TVD Reference:</b>	Offset Datum

<b>Offset Design</b> Northridge Pad Sec.4-T5N-R66W - Northridge 21-4D (Exist.) - Wellbore #1 - Wellbore #1												<b>Offset Site Error:</b>	0.0 ft
Survey Program: 150-MWD												<b>Offset Well Error:</b>	0.0 ft
Reference		Offset		Semi Major Axis			Distance						
Measured Depth (ft)	Vertical Depth (ft)	Measured Depth (ft)	Vertical Depth (ft)	Reference (ft)	Offset (ft)	Highside Toolface (°)	Offset Wellbore Centre +N/-S (ft)	+E/-W (ft)	Between Centres (ft)	Between Ellipses (ft)	Minimum Separation (ft)	Separation Factor	Warning
5,000.0	4,841.5	4,979.5	4,771.9	21.9	26.3	45.73	1,199.5	-175.1	278.6	238.0	40.55	6.870	
5,100.0	4,936.1	5,079.1	4,866.2	22.6	26.9	45.21	1,229.2	-188.1	276.3	234.9	41.40	6.674	
5,200.0	5,030.8	5,185.4	4,967.3	23.2	27.5	45.02	1,259.3	-201.0	273.1	230.7	42.36	6.447	
5,300.0	5,125.5	5,295.3	5,073.4	23.8	28.0	45.74	1,285.6	-212.1	266.8	223.2	43.59	6.120	
5,400.0	5,220.2	5,406.0	5,181.9	24.5	28.5	47.66	1,305.9	-220.9	256.6	211.4	45.19	5.678	
5,500.0	5,314.9	5,512.2	5,287.1	25.1	28.8	50.95	1,318.7	-226.5	242.8	195.7	47.17	5.148	
5,600.0	5,410.5	5,613.1	5,387.5	25.6	29.0	54.37	1,327.9	-230.9	229.8	180.8	48.98	4.692	
5,700.0	5,507.1	5,713.0	5,487.0	26.0	29.3	57.92	1,335.2	-234.1	218.9	168.2	50.69	4.318	
5,800.0	5,604.6	5,812.0	5,585.9	26.4	29.4	61.40	1,341.2	-236.6	210.2	158.0	52.21	4.026	
5,900.0	5,702.7	5,913.2	5,686.9	26.7	29.6	64.93	1,345.6	-238.0	203.6	150.0	53.59	3.799	
6,000.0	5,801.5	6,014.5	5,788.2	27.0	29.7	68.34	1,347.8	-238.9	198.1	143.3	54.76	3.617	
6,100.0	5,900.7	6,115.0	5,888.7	27.2	29.8	71.20	1,348.8	-240.0	193.6	138.0	55.65	3.479	
6,200.0	6,000.4	6,215.2	5,988.9	27.4	29.9	73.19	1,349.6	-241.3	190.3	134.0	56.29	3.380	
6,300.0	6,100.2	6,315.3	6,089.0	27.6	30.0	74.16	1,350.4	-243.0	187.9	131.2	56.70	3.314	
6,400.0	6,200.2	6,415.1	6,188.8	27.7	30.2	56.29	1,351.5	-244.9	186.5	152.4	34.10	5.470	
6,500.0	6,300.2	6,514.4	6,288.1	27.8	30.3	55.59	1,353.0	-246.7	185.9	151.3	34.58	5.374	
6,600.0	6,400.1	6,613.6	6,387.2	27.9	30.4	-35.89	1,355.1	-248.4	183.2	126.2	56.93	3.218	
6,700.0	6,498.7	6,711.3	6,484.8	27.9	30.5	-40.61	1,357.5	-250.0	170.7	115.2	55.51	3.076	
6,800.0	6,594.2	6,806.1	6,579.6	27.9	30.7	-50.09	1,360.1	-251.4	150.2	98.0	52.25	2.875	
6,900.0	6,684.5	6,895.8	6,669.3	27.9	30.8	-66.37	1,362.5	-252.7	127.5	81.2	46.35	2.752 SF	
6,991.6	6,761.4	6,971.2	6,744.6	27.8	30.9	-86.88	1,364.7	-254.0	116.9	77.8	39.14	2.987 CC, ES	
7,000.0	6,768.1	6,977.8	6,751.2	27.8	30.9	-88.86	1,365.0	-254.1	117.0	78.5	38.51	3.039	
7,100.0	6,843.3	7,050.2	6,823.6	27.7	31.0	-109.73	1,367.6	-255.9	137.6	104.7	32.92	4.181	
7,200.0	6,908.5	7,112.1	6,885.4	27.7	31.2	-122.78	1,370.4	-257.7	190.1	160.0	30.11	6.315	
7,300.0	6,962.6	7,162.5	6,935.6	27.6	31.3	-128.36	1,372.9	-259.2	262.7	234.3	28.46	9.231	
7,400.0	7,004.5	7,200.4	6,973.5	27.5	31.3	-127.56	1,374.9	-260.5	347.3	318.5	28.76	12.073	
7,500.0	7,033.3	7,226.2	6,999.2	27.5	31.4	-119.32	1,376.4	-261.3	439.0	406.0	33.02	13.296	
7,600.0	7,048.5	7,238.5	7,011.5	27.6	31.4	-98.45	1,377.1	-261.7	534.8	493.2	41.55	12.869	
7,700.0	7,051.0	7,237.8	7,010.8	27.8	31.4	-78.12	1,377.1	-261.7	632.2	586.8	45.43	13.916	
7,800.0	7,051.0	7,234.6	7,007.6	28.5	31.4	-76.72	1,376.9	-261.6	730.3	683.1	47.21	15.470	
7,900.0	7,051.0	7,231.3	7,004.3	29.8	31.4	-75.32	1,376.7	-261.5	828.8	779.7	49.09	16.885	
8,000.0	7,051.0	7,227.9	7,000.9	31.6	31.4	-73.91	1,376.5	-261.4	927.7	876.6	51.03	18.177	



<b>Company:</b>	Synergy Resources	<b>Local Co-ordinate Reference:</b>	Well SRC Kelly Farms 21-4-3NHZ #2
<b>Project:</b>	SEC.4-T5N-R66W	<b>TVD Reference:</b>	WELL @ 4766.0ft (Original Well Elev)
<b>Reference Site:</b>	SRC Kelly Farms Pad Sec.4-T5N-R66W	<b>MD Reference:</b>	WELL @ 4766.0ft (Original Well Elev)
<b>Site Error:</b>	0.0ft	<b>North Reference:</b>	True
<b>Reference Well:</b>	SRC Kelly Farms 21-4-3NHZ #2	<b>Survey Calculation Method:</b>	Minimum Curvature
<b>Well Error:</b>	0.0ft	<b>Output errors are at</b>	2.00 sigma
<b>Reference Wellbore</b>	Wellbore #1	<b>Database:</b>	Landmark
<b>Reference Design:</b>	Plan #1 (5-20-13)	<b>Offset TVD Reference:</b>	Offset Datum

Offset Design Northridge Pad Sec.4-T5N-R66W - Northridge 4AD (Exist.) - Wellbore #1 - Wellbore #1													Offset Site Error:	0.0 ft
Survey Program: 182-MWD													Offset Well Error:	0.0 ft
Reference		Offset		Semi Major Axis			Distance							Warning
Measured Depth (ft)	Vertical Depth (ft)	Measured Depth (ft)	Vertical Depth (ft)	Reference (ft)	Offset (ft)	Highside Toolface (°)	Offset Wellbore Centre +N/-S (ft)	+E/-W (ft)	Between Centres (ft)	Between Ellipses (ft)	Minimum Separation (ft)	Separation Factor		
0.0	0.0	0.0	0.0	0.0	0.0	99.06	-56.5	354.1	358.8					
100.0	100.0	88.8	88.8	0.1	0.1	99.05	-56.4	353.9	358.4	358.2	0.21	1,685.856		
200.0	200.0	190.1	190.1	0.3	0.2	99.04	-56.2	353.1	357.6	357.0	0.56	639.978		
248.9	248.9	235.9	235.9	0.4	0.3	99.02	-56.0	352.9	357.4	356.6	0.76	469.399		
300.0	300.0	284.8	284.8	0.6	0.4	98.99	-55.9	353.2	357.6	356.6	0.98	366.626		
400.0	400.0	390.0	390.0	0.8	0.6	99.03	-56.1	353.0	357.5	356.1	1.42	251.945		
500.0	500.0	492.8	492.8	1.0	0.9	99.06	-56.0	351.5	356.0	354.1	1.87	190.830		
600.0	600.0	591.3	591.2	1.2	1.1	98.91	-54.9	350.4	354.7	352.4	2.30	154.517		
700.0	700.0	692.1	692.1	1.5	1.3	99.05	-55.6	348.9	353.4	350.6	2.73	129.395		
800.0	800.0	795.6	795.5	1.7	1.5	99.22	-56.3	346.9	351.6	348.4	3.18	110.579		
900.0	900.0	895.1	895.0	1.9	1.7	99.25	-56.1	344.5	349.1	345.5	3.61	96.583		
1,000.0	1,000.0	1,007.9	1,007.7	2.1	2.0	99.12	-54.6	340.3	345.2	341.2	4.08	84.551		
1,100.0	1,100.0	1,122.8	1,122.2	2.4	2.2	98.88	-51.6	330.4	336.3	331.7	4.57	73.551		
1,200.0	1,200.0	1,225.2	1,223.8	2.6	2.5	98.17	-46.0	320.2	325.6	320.6	5.03	64.788		
1,300.0	1,300.0	1,336.3	1,333.9	2.8	2.8	97.20	-38.7	306.9	312.9	307.4	5.50	56.843		
1,400.0	1,400.0	1,443.6	1,439.5	3.0	3.2	95.72	-29.1	290.0	296.2	290.2	5.99	49.484		
1,500.0	1,500.0	1,546.7	1,540.3	3.3	3.5	112.31	-18.3	272.0	278.4	271.9	6.48	42.981		
1,600.0	1,599.8	1,651.6	1,642.8	3.5	3.9	112.06	-9.0	251.3	260.0	253.0	6.97	37.321		
1,700.0	1,699.5	1,754.2	1,742.3	3.7	4.4	112.22	1.8	229.0	240.7	233.3	7.47	32.216		
1,800.0	1,798.7	1,853.1	1,838.0	4.0	4.8	113.22	12.0	206.5	221.8	213.8	7.96	27.843		
1,900.0	1,897.5	1,951.3	1,933.1	4.2	5.2	115.19	22.4	184.2	204.3	195.9	8.45	24.174		
2,000.0	1,995.6	2,053.3	2,031.5	4.5	5.7	118.10	34.5	160.1	187.4	178.5	8.97	20.896		
2,100.0	2,093.1	2,154.2	2,128.2	4.8	6.3	122.07	48.2	134.8	171.0	161.5	9.50	18.007		
2,200.0	2,189.6	2,254.5	2,223.8	5.2	6.9	127.08	64.0	108.6	155.7	145.7	10.02	15.536		
2,300.0	2,285.3	2,352.2	2,316.5	5.6	7.4	133.98	79.5	82.1	143.1	132.6	10.51	13.613		
2,400.0	2,380.0	2,448.8	2,408.5	6.1	8.0	142.55	94.3	56.4	135.8	124.8	11.03	12.312		
2,500.0	2,474.7	2,547.8	2,502.7	6.6	8.5	152.01	109.5	30.0	132.1	120.4	11.68	11.314		
2,600.0	2,569.4	2,646.6	2,596.2	7.1	9.1	161.19	126.8	3.5	130.4	118.0	12.47	10.457		
2,601.2	2,570.5	2,647.8	2,597.3	7.2	9.1	161.31	127.1	3.2	130.4	117.9	12.48	10.448 CC, ES		
2,700.0	2,664.0	2,745.0	2,689.3	7.7	9.7	170.59	144.0	-23.5	132.0	118.5	13.47	9.799		
2,800.0	2,758.7	2,842.1	2,780.6	8.3	10.4	-179.59	160.4	-52.4	136.8	122.1	14.73	9.290		
2,900.0	2,853.4	2,936.0	2,869.1	8.8	11.0	-171.06	175.3	-79.9	146.6	130.5	16.07	9.118 SF		
3,000.0	2,948.1	3,032.0	2,960.6	9.4	11.5	-164.42	189.2	-105.5	161.0	143.6	17.40	9.249		
3,100.0	3,042.7	3,132.7	3,056.2	10.0	12.1	-158.36	204.2	-133.1	176.8	158.0	18.82	9.397		
3,200.0	3,137.4	3,228.2	3,147.1	10.6	12.7	-153.86	219.5	-158.3	193.1	173.0	20.11	9.605		
3,300.0	3,232.1	3,318.5	3,233.6	11.2	13.2	-150.64	231.6	-181.1	212.7	191.5	21.27	10.001		
3,400.0	3,326.7	3,416.3	3,327.6	11.8	13.7	-148.01	242.5	-205.3	235.0	212.5	22.43	10.476		
3,500.0	3,421.4	3,509.7	3,417.8	12.5	14.2	-146.07	252.9	-227.7	257.5	234.0	23.51	10.952		
3,600.0	3,516.1	3,611.2	3,515.8	13.1	14.7	-144.45	263.6	-251.6	280.7	256.1	24.61	11.405		
3,700.0	3,610.7	3,706.7	3,608.1	13.7	15.2	-143.17	274.4	-273.7	303.2	277.5	25.67	11.811		
3,800.0	3,705.4	3,815.6	3,712.6	14.3	15.8	-141.50	289.0	-300.6	324.4	297.5	26.90	12.060		
3,900.0	3,800.1	3,919.9	3,811.4	14.9	16.5	-139.43	307.0	-328.9	343.0	314.8	28.24	12.146		
4,000.0	3,894.8	4,019.1	3,904.2	15.6	17.2	-137.21	326.3	-357.8	360.9	331.2	29.64	12.175		
4,100.0	3,989.4	4,113.6	3,992.5	16.2	17.8	-135.18	344.8	-386.1	379.4	348.4	31.00	12.238		
4,200.0	4,084.1	4,205.1	4,078.8	16.8	18.4	-133.74	360.8	-411.9	399.4	367.2	32.24	12.389		
4,300.0	4,178.8	4,295.9	4,165.4	17.5	19.0	-132.86	373.8	-435.9	421.5	388.1	33.37	12.630		
4,400.0	4,273.4	4,398.6	4,262.5	18.1	19.6	-131.57	390.0	-465.3	443.6	409.0	34.67	12.798		
4,500.0	4,368.1	4,502.3	4,360.4	18.7	20.3	-130.38	407.6	-494.5	464.6	428.6	35.98	12.911		
4,600.0	4,462.8	4,593.7	4,446.1	19.4	20.9	-129.20	424.6	-521.3	485.1	447.8	37.25	13.022		
4,700.0	4,557.5	4,685.4	4,531.4	20.0	21.6	-127.89	440.4	-551.1	508.4	469.8	38.57	13.181		
4,800.0	4,652.1	4,796.7	4,635.5	20.6	22.4	-126.63	460.9	-584.5	529.6	489.6	39.99	13.245		
4,900.0	4,746.8	4,890.0	4,723.3	21.3	23.0	-125.79	478.0	-611.1	550.4	509.2	41.21	13.356		

CC - Min centre to center distance or convergent point, SF - min separation factor, ES - min ellipse separation

<b>Company:</b>	Synergy Resources	<b>Local Co-ordinate Reference:</b>	Well SRC Kelly Farms 21-4-3NHZ #2
<b>Project:</b>	SEC.4-T5N-R66W	<b>TVD Reference:</b>	WELL @ 4766.0ft (Original Well Elev)
<b>Reference Site:</b>	SRC Kelly Farms Pad Sec.4-T5N-R66W	<b>MD Reference:</b>	WELL @ 4766.0ft (Original Well Elev)
<b>Site Error:</b>	0.0ft	<b>North Reference:</b>	True
<b>Reference Well:</b>	SRC Kelly Farms 21-4-3NHZ #2	<b>Survey Calculation Method:</b>	Minimum Curvature
<b>Well Error:</b>	0.0ft	<b>Output errors are at</b>	2.00 sigma
<b>Reference Wellbore</b>	Wellbore #1	<b>Database:</b>	Landmark
<b>Reference Design:</b>	Plan #1 (5-20-13)	<b>Offset TVD Reference:</b>	Offset Datum

<b>Offset Design</b> Northridge Pad Sec.4-T5N-R66W - Northridge 4AD (Exist.) - Wellbore #1 - Wellbore #1												<b>Offset Site Error:</b>	0.0 ft
Survey Program: 182-MWD												<b>Offset Well Error:</b>	0.0 ft
Reference		Offset		Semi Major Axis			Distance						
Measured Depth (ft)	Vertical Depth (ft)	Measured Depth (ft)	Vertical Depth (ft)	Reference (ft)	Offset (ft)	Highside Toolface (°)	Offset Wellbore Centre +N/-S (ft)	+E/-W (ft)	Between Centres (ft)	Between Ellipses (ft)	Minimum Separation (ft)	Separation Factor	Warning
5,000.0	4,841.5	4,991.0	4,819.0	21.9	23.6	-125.19	494.6	-638.6	572.1	529.6	42.44	13.479	
5,100.0	4,936.1	5,088.0	4,911.2	22.6	24.2	-124.70	511.1	-664.1	592.7	549.1	43.62	13.588	
5,200.0	5,030.8	5,175.7	4,995.4	23.2	24.7	-124.58	523.4	-685.2	614.5	569.8	44.66	13.759	
5,300.0	5,125.5	5,273.4	5,090.1	23.8	25.1	-124.77	534.2	-706.9	637.5	591.9	45.66	13.963	
5,400.0	5,220.2	5,374.7	5,189.3	24.5	25.6	-125.41	543.2	-724.8	659.7	613.2	46.55	14.173	
5,500.0	5,314.9	5,468.8	5,281.9	25.1	25.9	-126.26	550.5	-739.9	681.9	634.5	47.35	14.400	
5,600.0	5,410.5	5,568.5	5,380.7	25.6	26.2	-127.46	555.7	-752.5	702.7	654.7	48.00	14.641	
5,700.0	5,507.1	5,676.9	5,488.6	26.0	26.5	-128.71	559.8	-762.2	720.7	672.1	48.54	14.848	
5,800.0	5,604.6	5,788.5	5,599.8	26.4	26.7	-129.75	565.1	-769.8	734.7	685.7	49.03	14.985	
5,900.0	5,702.7	5,877.8	5,688.9	26.7	26.9	-130.50	568.5	-774.5	746.7	697.2	49.44	15.103	
6,000.0	5,801.5	5,975.7	5,786.7	27.0	27.0	-131.23	570.6	-778.1	757.0	707.3	49.78	15.209	
6,100.0	5,900.7	6,063.8	5,874.7	27.2	27.2	-131.71	571.6	-781.6	766.2	716.1	50.08	15.299	
6,200.0	6,000.4	6,165.1	5,976.0	27.4	27.3	-132.01	572.2	-785.8	773.6	723.2	50.38	15.355	
6,300.0	6,100.2	6,262.6	6,073.3	27.6	27.5	-132.11	572.7	-789.6	778.6	727.9	50.65	15.371	
6,400.0	6,200.2	6,356.4	6,167.1	27.7	27.6	-149.81	572.4	-793.1	781.9	744.5	37.47	20.869	
6,500.0	6,300.2	6,457.6	6,268.2	27.8	27.7	-149.65	571.2	-796.3	784.5	746.8	37.74	20.787	
6,600.0	6,400.1	6,559.7	6,370.3	27.9	27.8	120.40	569.7	-798.2	788.3	736.9	51.39	15.339	
6,700.0	6,498.7	6,660.0	6,470.6	27.9	28.0	120.81	568.8	-800.6	798.6	747.2	51.30	15.565	
6,800.0	6,594.2	6,750.7	6,561.2	27.9	28.1	121.35	568.2	-803.3	816.5	765.7	50.81	16.069	
6,900.0	6,684.5	6,838.0	6,648.5	27.9	28.2	121.79	566.8	-805.5	843.4	793.4	49.95	16.885	
7,000.0	6,768.1	6,921.0	6,731.4	27.8	28.3	121.96	565.1	-807.2	879.2	830.4	48.80	18.017	
7,100.0	6,843.3	6,998.0	6,808.4	27.7	28.4	121.63	563.8	-808.7	923.9	876.4	47.54	19.433	
7,200.0	6,908.5	7,058.7	6,869.0	27.7	28.5	120.06	563.1	-810.1	978.0	931.5	46.50	21.032	



SRC Kelly Farms Pad Sec.4-T5N-R66W - SRC Kelly Farms 21-4-3NHZ - Wellbore #1 - Plan #1 (5-20-1)													Offset Site Error:	0.0 ft
Survey Program: 0-MWD													Offset Well Error:	0.0 ft
Reference		Offset		Semi Major Axis			Distance							
Measured Depth	Vertical Depth	Measured Depth	Vertical Depth	Reference	Offset	Highside Toolface	Offset Wellbore Centre		Between Centres	Between Ellipses	Minimum Separation	Separation Factor	Warning	
(ft)	(ft)	(ft)	(ft)	(ft)	(ft)	(°)	+N/-S (ft)	+E/-W (ft)	(ft)	(ft)	(ft)			
0.0	0.0	0.0	0.0	0.0	0.0	19.20	74.3	25.9	78.7					
100.0	100.0	99.0	99.0	0.1	0.1	19.20	74.3	25.9	78.7	78.5	0.22	351.935		
200.0	200.0	199.0	199.0	0.3	0.3	19.20	74.3	25.9	78.7	78.0	0.67	117.117	CC	
300.0	300.0	296.8	296.7	0.6	0.6	18.55	75.9	25.5	80.1	79.0	1.12	71.673		
400.0	400.0	394.3	394.1	0.8	0.8	16.69	80.7	24.2	84.4	82.8	1.57	53.727		
500.0	500.0	491.3	490.8	1.0	1.0	13.99	88.6	22.1	91.7	89.7	2.03	45.073		
600.0	600.0	587.7	586.6	1.2	1.3	10.88	99.6	19.2	102.2	99.7	2.51	40.686		
700.0	700.0	683.3	681.0	1.5	1.6	7.73	113.6	15.4	116.1	113.1	3.00	38.639		
800.0	800.0	777.7	773.8	1.7	1.9	4.80	130.4	11.0	133.3	129.8	3.51	38.005		
900.0	900.0	870.9	864.8	1.9	2.3	2.21	149.9	5.8	153.9	149.8	4.02	38.274		
1,000.0	1,000.0	962.7	953.7	2.1	2.8	-0.02	171.9	-0.1	177.7	173.2	4.54	39.140		
1,100.0	1,100.0	1,053.8	1,041.2	2.4	3.2	-1.92	196.3	-6.6	204.8	199.7	5.07	40.376		
1,200.0	1,200.0	1,149.5	1,132.9	2.6	3.8	-3.51	223.1	-13.7	233.1	227.4	5.61	41.533		
1,300.0	1,300.0	1,245.3	1,224.5	2.8	4.3	-4.76	249.8	-20.8	261.5	255.3	6.15	42.521		
1,400.0	1,400.0	1,341.0	1,316.2	3.0	4.8	-5.77	276.5	-27.9	290.0	283.3	6.69	43.360		
1,500.0	1,500.0	1,437.2	1,408.3	3.3	5.4	11.13	303.4	-35.1	316.9	310.1	6.84	46.350		
1,600.0	1,599.8	1,534.4	1,501.3	3.5	5.9	10.51	330.5	-42.3	340.6	333.3	7.34	46.419		
1,700.0	1,699.5	1,632.2	1,595.0	3.7	6.5	10.07	357.8	-49.6	360.9	353.1	7.84	46.024		
1,800.0	1,798.7	1,730.8	1,689.3	4.0	7.1	9.78	385.3	-56.9	377.9	369.5	8.35	45.252		
1,900.0	1,897.5	1,829.8	1,784.2	4.2	7.6	9.61	413.0	-64.2	391.5	382.6	8.86	44.169		
2,000.0	1,995.6	1,929.3	1,879.4	4.5	8.2	9.54	440.7	-71.6	401.6	392.2	9.38	42.827		
2,100.0	2,093.1	2,029.1	1,974.9	4.8	8.8	9.56	468.6	-79.0	408.3	398.4	9.90	41.266		
2,200.0	2,189.6	2,129.0	2,070.6	5.2	9.4	9.68	496.5	-86.5	411.6	401.2	10.42	39.517		
2,300.0	2,285.3	2,229.0	2,166.3	5.6	10.0	9.89	524.4	-93.9	411.5	400.5	10.94	37.606		
2,400.0	2,380.0	2,328.9	2,262.0	6.1	10.5	10.17	552.3	-101.3	408.5	397.0	11.51	35.499		
2,500.0	2,474.7	2,428.9	2,357.7	6.6	11.1	10.46	580.2	-108.7	405.3	393.2	12.11	33.480		
2,600.0	2,569.4	2,528.8	2,453.3	7.1	11.7	10.75	608.1	-116.2	402.1	389.4	12.71	31.628		
2,700.0	2,664.0	2,628.7	2,549.0	7.7	12.3	11.05	636.0	-123.6	398.9	385.6	13.33	29.926		
2,800.0	2,758.7	2,728.6	2,644.7	8.3	12.9	11.35	663.9	-131.0	395.8	381.8	13.96	28.358		
2,900.0	2,853.4	2,828.6	2,740.3	8.8	13.5	11.66	691.8	-138.4	392.6	378.0	14.59	26.911		
3,000.0	2,948.1	2,928.5	2,836.0	9.4	14.1	11.97	719.7	-145.9	389.5	374.2	15.23	25.571		
3,100.0	3,042.7	3,028.4	2,931.7	10.0	14.6	12.29	747.6	-153.3	386.3	370.4	15.88	24.329		
3,200.0	3,137.4	3,128.4	3,027.3	10.6	15.2	12.62	775.5	-160.7	383.2	366.7	16.53	23.175		
3,300.0	3,232.1	3,228.3	3,123.0	11.2	15.8	12.94	803.4	-168.1	380.1	362.9	17.20	22.099		
3,400.0	3,326.7	3,328.2	3,218.7	11.8	16.4	13.28	831.3	-175.6	377.0	359.1	17.87	21.096		
3,500.0	3,421.4	3,428.1	3,314.3	12.5	17.0	13.62	859.2	-183.0	373.9	355.3	18.55	20.158		
3,600.0	3,516.1	3,528.1	3,410.0	13.1	17.6	13.96	887.1	-190.4	370.8	351.6	19.23	19.279		
3,700.0	3,610.7	3,628.0	3,505.7	13.7	18.1	14.31	915.0	-197.8	367.7	347.8	19.93	18.454		
3,800.0	3,705.4	3,727.9	3,601.3	14.3	18.7	14.67	942.9	-205.3	364.7	344.1	20.63	17.678		
3,900.0	3,800.1	3,827.8	3,697.0	14.9	19.3	15.03	970.8	-212.7	361.7	340.3	21.34	16.948		
4,000.0	3,894.8	3,927.8	3,792.7	15.6	19.9	15.40	998.6	-220.1	358.6	336.6	22.06	16.260		
4,100.0	3,989.4	4,027.7	3,888.3	16.2	20.5	15.78	1,026.5	-227.5	355.6	332.9	22.78	15.609		
4,200.0	4,084.1	4,127.6	3,984.0	16.8	21.1	16.16	1,054.4	-235.0	352.7	329.1	23.52	14.994		
4,300.0	4,178.8	4,227.6	4,079.7	17.5	21.7	16.55	1,082.3	-242.4	349.7	325.4	24.26	14.411		
4,400.0	4,273.4	4,327.5	4,175.3	18.1	22.2	16.94	1,110.2	-249.8	346.7	321.7	25.02	13.859		
4,500.0	4,368.1	4,427.4	4,271.0	18.7	22.8	17.34	1,138.1	-257.2	343.8	318.0	25.78	13.335		
4,600.0	4,462.8	4,527.3	4,366.7	19.4	23.4	17.75	1,166.0	-264.6	340.9	314.3	26.55	12.836		
4,700.0	4,557.5	4,627.3	4,462.3	20.0	24.0	18.17	1,193.9	-272.1	338.0	310.6	27.34	12.362		
4,800.0	4,652.1	4,727.2	4,558.0	20.6	24.6	18.59	1,221.8	-279.5	335.1	306.9	28.13	11.910		
4,900.0	4,746.8	4,827.1	4,653.7	21.3	25.2	19.02	1,249.7	-286.9	332.2	303.3	28.94	11.479		
5,000.0	4,841.5	4,927.1	4,749.3	21.9	25.8	19.46	1,277.6	-294.3	329.3	299.6	29.76	11.068		
5,100.0	4,936.1	5,027.0	4,845.0	22.6	26.4	19.90	1,305.5	-301.8	326.5	295.9	30.59	10.675		

<b>Company:</b>	Synergy Resources	<b>Local Co-ordinate Reference:</b>	Well SRC Kelly Farms 21-4-3NHZ #2
<b>Project:</b>	SEC.4-T5N-R66W	<b>TVD Reference:</b>	WELL @ 4766.0ft (Original Well Elev)
<b>Reference Site:</b>	SRC Kelly Farms Pad Sec.4-T5N-R66W	<b>MD Reference:</b>	WELL @ 4766.0ft (Original Well Elev)
<b>Site Error:</b>	0.0ft	<b>North Reference:</b>	True
<b>Reference Well:</b>	SRC Kelly Farms 21-4-3NHZ #2	<b>Survey Calculation Method:</b>	Minimum Curvature
<b>Well Error:</b>	0.0ft	<b>Output errors are at</b>	2.00 sigma
<b>Reference Wellbore</b>	Wellbore #1	<b>Database:</b>	Landmark
<b>Reference Design:</b>	Plan #1 (5-20-13)	<b>Offset TVD Reference:</b>	Offset Datum

Offset Design												Offset Site Error:	0.0 ft
Survey Program: 0-MWDD												Offset Well Error:	0.0 ft
Reference		Offset		Semi Major Axis			Distance						Warning
Measured Depth (ft)	Vertical Depth (ft)	Measured Depth (ft)	Vertical Depth (ft)	Reference (ft)	Offset (ft)	Highside Toolface (°)	Offset Wellbore Centre +N/-S (ft)	+E/-W (ft)	Between Centres (ft)	Between Ellipses (ft)	Minimum Separation (ft)	Separation Factor	
5,200.0	5,030.8	5,126.9	4,940.7	23.2	26.9	20.35	1,333.4	-309.2	323.7	292.3	31.43	10.300	
5,300.0	5,125.5	5,226.8	5,036.3	23.8	27.5	20.81	1,361.3	-316.6	320.9	288.6	32.28	9.941	
5,400.0	5,220.2	5,326.8	5,132.0	24.5	28.1	21.28	1,389.2	-324.0	318.2	285.0	33.15	9.597	
5,500.0	5,314.9	5,426.7	5,227.7	25.1	28.7	21.73	1,417.1	-331.5	315.7	281.6	34.02	9.278	
5,544.6	5,357.5	5,471.3	5,270.4	25.3	29.0	21.88	1,429.5	-334.8	315.3	281.0	34.37	9.175	
5,600.0	5,410.5	5,526.7	5,323.4	25.6	29.3	22.01	1,445.0	-338.9	315.8	281.1	34.77	9.082	
5,700.0	5,507.1	5,632.3	5,424.7	26.0	29.8	22.09	1,474.0	-346.6	318.8	283.4	35.41	9.004	
5,800.0	5,604.6	5,744.1	5,532.8	26.4	30.3	22.14	1,501.2	-353.9	321.8	285.9	35.95	8.953	
5,900.0	5,702.7	5,856.0	5,642.1	26.7	30.7	22.18	1,524.3	-360.0	324.4	288.0	36.41	8.909	
6,000.0	5,801.5	5,967.9	5,752.4	27.0	31.0	22.21	1,543.3	-365.1	326.5	289.7	36.81	8.870	
6,100.0	5,900.7	6,080.0	5,863.4	27.2	31.3	22.24	1,558.1	-369.0	328.2	291.0	37.13	8.838	
6,200.0	6,000.4	6,192.1	5,974.9	27.4	31.6	22.26	1,568.8	-371.8	329.3	292.0	37.38	8.811	
6,300.0	6,100.2	6,304.3	6,086.9	27.6	31.8	22.26	1,575.2	-373.5	330.1	292.5	37.55	8.790	
6,400.0	6,200.2	6,416.5	6,199.1	27.7	31.9	4.50	1,577.3	-374.1	330.3	273.5	56.85	5.811	
6,500.0	6,300.2	6,516.6	6,299.2	27.8	32.0	4.50	1,577.3	-374.1	330.3	273.3	57.04	5.791	
6,600.0	6,400.1	6,614.4	6,396.9	27.9	32.0	-85.54	1,577.3	-371.4	330.3	292.1	38.21	8.645	
6,700.0	6,498.7	6,710.9	6,492.2	27.9	32.1	-85.66	1,577.3	-356.6	330.3	292.0	38.27	8.631	
6,800.0	6,594.2	6,807.6	6,584.8	27.9	32.1	-85.86	1,577.3	-329.0	330.2	292.1	38.13	8.660	
6,900.0	6,684.5	6,904.5	6,673.0	27.9	32.0	-86.14	1,577.3	-289.2	330.1	292.2	37.88	8.713	
7,000.0	6,768.1	7,001.6	6,755.3	27.8	32.0	-86.49	1,577.3	-237.7	329.9	292.3	37.66	8.761	
7,100.0	6,843.3	7,099.0	6,830.0	27.7	31.9	-86.91	1,577.3	-175.3	329.8	292.2	37.62	8.768	
7,200.0	6,908.5	7,196.7	6,895.8	27.7	31.8	-87.39	1,577.3	-103.2	329.7	291.7	37.93	8.691	
7,300.0	6,962.6	7,294.8	6,951.3	27.6	31.7	-87.92	1,577.3	-22.4	329.5	290.8	38.77	8.500	
7,400.0	7,004.5	7,393.3	6,995.5	27.5	31.7	-88.49	1,577.3	65.6	329.4	289.2	40.24	8.187	
7,500.0	7,033.3	7,492.3	7,027.3	27.5	31.7	-89.10	1,577.3	159.2	329.4	287.0	42.36	7.776	
7,600.0	7,048.5	7,591.8	7,045.9	27.6	31.7	-89.72	1,577.3	256.8	329.3	284.3	45.05	7.311	
7,650.2	7,051.6	7,641.9	7,050.1	27.6	31.8	-89.91	1,577.3	306.8	329.3	282.7	46.62	7.064	
7,700.0	7,051.0	7,691.7	7,051.0	27.8	31.9	-90.17	1,577.3	356.6	329.3	281.1	48.21	6.831	
7,800.0	7,051.0	7,791.7	7,051.0	28.5	32.2	-90.17	1,577.3	456.6	329.3	277.5	51.83	6.354	
7,900.0	7,051.0	7,891.7	7,051.0	29.8	32.9	-90.17	1,577.3	556.6	329.3	273.5	55.79	5.904	
8,000.0	7,051.0	7,991.7	7,051.0	31.6	33.9	-90.17	1,577.3	656.6	329.3	269.3	60.00	5.489	
8,100.0	7,051.0	8,091.7	7,051.0	33.7	35.4	-90.17	1,577.3	756.6	329.3	264.9	64.43	5.111	
8,200.0	7,051.0	8,191.7	7,051.0	35.9	37.1	-90.17	1,577.3	856.6	329.3	260.3	69.03	4.771	
8,300.0	7,051.0	8,291.7	7,051.0	38.2	39.1	-90.17	1,577.3	956.6	329.3	255.6	73.78	4.464	
8,400.0	7,051.0	8,391.7	7,051.0	40.6	41.3	-90.17	1,577.3	1,056.6	329.3	250.7	78.64	4.188	
8,500.0	7,051.0	8,491.7	7,051.0	43.0	43.6	-90.17	1,577.3	1,156.6	329.3	245.7	83.59	3.940	
8,600.0	7,051.0	8,591.7	7,051.0	45.5	46.0	-90.17	1,577.3	1,256.6	329.3	240.7	88.62	3.716	
8,700.0	7,051.0	8,691.7	7,051.0	48.0	48.4	-90.17	1,577.3	1,356.6	329.3	235.6	93.72	3.514	
8,800.0	7,051.0	8,791.7	7,051.0	50.6	50.8	-90.17	1,577.3	1,456.6	329.3	230.5	98.88	3.331	
8,900.0	7,051.0	8,891.7	7,051.0	53.1	53.3	-90.17	1,577.3	1,556.6	329.3	225.3	104.08	3.164	
9,000.0	7,051.0	8,991.7	7,051.0	55.7	55.9	-90.17	1,577.3	1,656.6	329.3	220.0	109.32	3.012	
9,100.0	7,051.0	9,091.7	7,051.0	58.4	58.4	-90.17	1,577.3	1,756.6	329.3	214.7	114.60	2.874	
9,200.0	7,051.0	9,191.7	7,051.0	61.0	61.0	-90.17	1,577.3	1,856.6	329.3	209.4	119.91	2.746	
9,300.0	7,051.0	9,291.7	7,051.0	63.6	63.6	-90.17	1,577.3	1,956.6	329.3	204.1	125.25	2.629	
9,400.0	7,051.0	9,391.7	7,051.0	66.3	66.3	-90.17	1,577.3	2,056.6	329.3	198.7	130.61	2.522	
9,500.0	7,051.0	9,491.7	7,051.0	69.0	68.9	-90.17	1,577.3	2,156.6	329.3	193.3	135.99	2.422	
9,600.0	7,051.0	9,591.7	7,051.0	71.7	71.6	-90.17	1,577.3	2,256.6	329.3	187.9	141.39	2.329	
9,700.0	7,051.0	9,691.7	7,051.0	74.4	74.2	-90.17	1,577.3	2,356.6	329.3	182.5	146.80	2.243	
9,800.0	7,051.0	9,791.7	7,051.0	77.1	76.9	-90.17	1,577.3	2,456.6	329.3	177.1	152.23	2.163	
9,900.0	7,051.0	9,891.7	7,051.0	79.8	79.6	-90.17	1,577.3	2,556.6	329.3	171.7	157.67	2.089	
10,000.0	7,051.0	9,991.7	7,051.0	82.5	82.3	-90.17	1,577.3	2,656.6	329.3	166.2	163.13	2.019	
10,100.0	7,051.0	10,091.7	7,051.0	85.2	85.0	-90.17	1,577.3	2,756.6	329.3	160.7	168.59	1.953	

CC - Min centre to center distance or convergent point, SF - min separation factor, ES - min ellipse separation

<b>Company:</b>	Synergy Resources	<b>Local Co-ordinate Reference:</b>	Well SRC Kelly Farms 21-4-3NHZ #2
<b>Project:</b>	SEC.4-T5N-R66W	<b>TVD Reference:</b>	WELL @ 4766.0ft (Original Well Elev)
<b>Reference Site:</b>	SRC Kelly Farms Pad Sec.4-T5N-R66W	<b>MD Reference:</b>	WELL @ 4766.0ft (Original Well Elev)
<b>Site Error:</b>	0.0ft	<b>North Reference:</b>	True
<b>Reference Well:</b>	SRC Kelly Farms 21-4-3NHZ #2	<b>Survey Calculation Method:</b>	Minimum Curvature
<b>Well Error:</b>	0.0ft	<b>Output errors are at</b>	2.00 sigma
<b>Reference Wellbore</b>	Wellbore #1	<b>Database:</b>	Landmark
<b>Reference Design:</b>	Plan #1 (5-20-13)	<b>Offset TVD Reference:</b>	Offset Datum

<b>Offset Design</b>												<b>Offset Site Error:</b>	0.0 ft
Survey Program: 0-MWD												<b>Offset Well Error:</b>	0.0 ft
Reference		Offset		Semi Major Axis			Distance						
Measured Depth (ft)	Vertical Depth (ft)	Measured Depth (ft)	Vertical Depth (ft)	Reference (ft)	Offset (ft)	Highside Toolface (°)	Offset Wellbore Centre +N/-S (ft)	+E/-W (ft)	Between Centres (ft)	Between Ellipses (ft)	Minimum Separation (ft)	Separation Factor	Warning
10,200.0	7,051.0	10,191.7	7,051.0	87.9	87.7	-90.17	1,577.3	2,856.6	329.3	155.3	174.07	1.892	
10,300.0	7,051.0	10,291.7	7,051.0	90.7	90.4	-90.17	1,577.3	2,956.6	329.3	149.8	179.55	1.834	
10,400.0	7,051.0	10,391.7	7,051.0	93.4	93.1	-90.17	1,577.3	3,056.6	329.3	144.3	185.04	1.780	
10,500.0	7,051.0	10,491.7	7,051.0	96.1	95.8	-90.17	1,577.3	3,156.6	329.3	138.8	190.54	1.728	
10,600.0	7,051.0	10,591.7	7,051.0	98.9	98.6	-90.17	1,577.3	3,256.6	329.3	133.3	196.05	1.680	
10,700.0	7,051.0	10,691.7	7,051.0	101.6	101.3	-90.17	1,577.3	3,356.6	329.3	127.8	201.56	1.634	
10,800.0	7,051.0	10,791.7	7,051.0	104.4	104.0	-90.17	1,577.3	3,456.6	329.3	122.3	207.07	1.590	
10,900.0	7,051.0	10,891.7	7,051.0	107.1	106.8	-90.17	1,577.3	3,556.6	329.3	116.7	212.60	1.549	
11,000.0	7,051.0	10,991.7	7,051.0	109.9	109.5	-90.17	1,577.3	3,656.6	329.3	111.2	218.12	1.510	
11,100.0	7,051.0	11,091.7	7,051.0	112.6	112.2	-90.17	1,577.3	3,756.6	329.3	105.7	223.65	1.473 Level 3	
11,200.0	7,051.0	11,191.7	7,051.0	115.4	115.0	-90.17	1,577.3	3,856.6	329.3	100.2	229.19	1.437 Level 3	
11,300.0	7,051.0	11,291.7	7,051.0	118.2	117.7	-90.17	1,577.3	3,956.6	329.3	94.6	234.73	1.403 Level 3	
11,400.0	7,051.0	11,391.7	7,051.0	120.9	120.5	-90.17	1,577.3	4,056.6	329.3	89.1	240.27	1.371 Level 3	
11,500.0	7,051.0	11,491.7	7,051.0	123.7	123.3	-90.17	1,577.3	4,156.6	329.3	83.5	245.82	1.340 Level 3	
11,600.0	7,051.0	11,591.7	7,051.0	126.5	126.0	-90.17	1,577.3	4,256.6	329.3	78.0	251.37	1.310 Level 3	
11,700.0	7,051.0	11,691.7	7,051.0	129.2	128.8	-90.17	1,577.3	4,356.6	329.3	72.4	256.92	1.282 Level 3	
11,800.0	7,051.0	11,791.7	7,051.0	132.0	131.5	-90.17	1,577.3	4,456.6	329.3	66.9	262.47	1.255 Level 3	
11,900.0	7,051.0	11,891.7	7,051.0	134.8	134.3	-90.17	1,577.3	4,556.6	329.3	61.3	268.03	1.229 Level 2	
12,000.0	7,051.0	11,991.7	7,051.0	137.6	137.1	-90.17	1,577.3	4,656.6	329.3	55.8	273.59	1.204 Level 2	
12,100.0	7,051.0	12,091.7	7,051.0	140.3	139.8	-90.17	1,577.3	4,756.6	329.3	50.2	279.15	1.180 Level 2	
12,200.0	7,051.0	12,191.7	7,051.0	143.1	142.6	-90.17	1,577.3	4,856.6	329.3	44.6	284.72	1.157 Level 2	
12,300.0	7,051.0	12,291.7	7,051.0	145.9	145.4	-90.17	1,577.3	4,956.6	329.3	39.1	290.28	1.135 Level 2	
12,400.0	7,051.0	12,391.7	7,051.0	148.7	148.2	-90.17	1,577.3	5,056.6	329.3	33.5	295.85	1.113 Level 2	
12,500.0	7,051.0	12,491.7	7,051.0	151.5	150.9	-90.17	1,577.3	5,156.6	329.3	27.9	301.42	1.093 Level 2	
12,600.0	7,051.0	12,591.7	7,051.0	154.2	153.7	-90.17	1,577.3	5,256.6	329.3	22.4	306.99	1.073 Level 2	
12,600.6	7,051.0	12,592.3	7,051.0	154.2	153.7	-90.17	1,577.3	5,257.2	329.3	22.3	307.02	1.073 Level 2, ES, SF	

CC - Min centre to center distance or convergent point, SF - min separation factor, ES - min ellipse separation

<b>Company:</b>	Synergy Resources	<b>Local Co-ordinate Reference:</b>	Well SRC Kelly Farms 21-4-3NHZ #2
<b>Project:</b>	SEC.4-T5N-R66W	<b>TVD Reference:</b>	WELL @ 4766.0ft (Original Well Elev)
<b>Reference Site:</b>	SRC Kelly Farms Pad Sec.4-T5N-R66W	<b>MD Reference:</b>	WELL @ 4766.0ft (Original Well Elev)
<b>Site Error:</b>	0.0ft	<b>North Reference:</b>	True
<b>Reference Well:</b>	SRC Kelly Farms 21-4-3NHZ #2	<b>Survey Calculation Method:</b>	Minimum Curvature
<b>Well Error:</b>	0.0ft	<b>Output errors are at</b>	2.00 sigma
<b>Reference Wellbore</b>	Wellbore #1	<b>Database:</b>	Landmark
<b>Reference Design:</b>	Plan #1 (5-20-13)	<b>Offset TVD Reference:</b>	Offset Datum

<b>Offset Design</b>												<b>Offset Site Error:</b>	0.0 ft
Survey Program: 0-MWD												<b>Offset Well Error:</b>	0.0 ft
Reference		Offset		Semi Major Axis			Distance						
Measured Depth (ft)	Vertical Depth (ft)	Measured Depth (ft)	Vertical Depth (ft)	Reference (ft)	Offset (ft)	Highside Toolface (°)	Offset Wellbore Centre +N/-S (ft)	+E/-W (ft)	Between Centres (ft)	Between Ellipses (ft)	Minimum Separation (ft)	Separation Factor	Warning
5,200.0	5,030.8	5,057.9	5,030.8	23.2	14.0	-155.33	259.2	-404.5	767.4	738.3	29.09	26.375	
5,300.0	5,125.5	5,152.6	5,125.5	23.8	14.1	-156.29	259.2	-404.5	797.0	767.6	29.46	27.050	
5,400.0	5,220.2	5,247.3	5,220.2	24.5	14.3	-157.18	259.2	-404.5	826.8	797.0	29.85	27.703	
5,500.0	5,314.9	5,342.0	5,314.9	25.1	14.5	-158.09	259.2	-404.5	856.6	826.4	30.25	28.314	
5,600.0	5,410.5	5,437.6	5,410.5	25.6	14.6	-159.00	259.2	-404.5	884.0	853.3	30.65	28.841	
5,700.0	5,507.1	5,534.2	5,507.1	26.0	14.8	-159.76	259.2	-404.5	908.3	877.3	31.04	29.265	
5,800.0	5,604.6	5,631.7	5,604.6	26.4	15.0	-160.38	259.2	-404.5	929.5	898.1	31.41	29.593	
5,900.0	5,702.7	5,729.8	5,702.7	26.7	15.2	-160.89	259.2	-404.5	947.5	915.8	31.76	29.830	
6,000.0	5,801.5	5,828.6	5,801.5	27.0	15.3	-161.29	259.2	-404.5	962.3	930.2	32.10	29.982	
6,100.0	5,900.7	5,927.8	5,900.7	27.2	15.5	-161.59	259.2	-404.5	973.9	941.5	32.41	30.053	
6,200.0	6,000.4	6,027.5	6,000.4	27.4	15.7	-161.80	259.2	-404.5	982.2	949.5	32.69	30.046	
6,300.0	6,100.2	6,127.3	6,100.2	27.6	15.9	-161.93	259.2	-404.5	987.1	954.2	32.94	29.964	
6,400.0	6,200.2	6,227.3	6,200.2	27.7	16.1	-179.74	259.2	-404.5	988.8	947.7	41.11	24.049	
6,500.0	6,300.2	6,327.3	6,300.2	27.8	16.3	-179.74	259.2	-404.5	988.8	947.4	41.42	23.872	
6,524.6	6,324.7	6,351.8	6,324.7	27.8	16.3	90.27	259.2	-404.5	988.8	955.2	33.60	29.431	
6,600.0	6,400.1	6,427.2	6,400.1	27.9	16.4	90.43	259.2	-404.5	988.8	954.9	33.88	29.188	
6,700.0	6,498.7	6,525.8	6,498.7	27.9	16.6	91.32	259.2	-404.5	989.1	954.8	34.29	28.842	
6,800.0	6,594.2	6,627.8	6,600.4	27.9	16.8	92.66	259.2	-398.2	989.9	955.2	34.66	28.563	
6,900.0	6,684.5	6,733.8	6,704.0	27.9	16.8	93.97	259.2	-376.5	991.3	956.4	34.87	28.427	
7,000.0	6,768.1	6,843.8	6,807.1	27.8	16.8	95.22	259.2	-338.0	993.1	958.1	34.99	28.383	
7,100.0	6,843.3	6,958.2	6,906.5	27.7	16.8	96.40	259.2	-281.9	995.2	960.1	35.12	28.334	
7,200.0	6,908.5	7,076.8	6,998.9	27.7	16.8	97.45	259.2	-207.7	997.4	962.0	35.47	28.121	
7,300.0	6,962.6	7,199.4	7,080.2	27.6	17.0	98.36	259.2	-116.1	999.6	963.3	36.27	27.556	

<b>Company:</b>	Synergy Resources	<b>Local Co-ordinate Reference:</b>	Well SRC Kelly Farms 21-4-3NHZ #2
<b>Project:</b>	SEC.4-T5N-R66W	<b>TVD Reference:</b>	WELL @ 4766.0ft (Original Well Elev)
<b>Reference Site:</b>	SRC Kelly Farms Pad Sec.4-T5N-R66W	<b>MD Reference:</b>	WELL @ 4766.0ft (Original Well Elev)
<b>Site Error:</b>	0.0ft	<b>North Reference:</b>	True
<b>Reference Well:</b>	SRC Kelly Farms 21-4-3NHZ #2	<b>Survey Calculation Method:</b>	Minimum Curvature
<b>Well Error:</b>	0.0ft	<b>Output errors are at</b>	2.00 sigma
<b>Reference Wellbore</b>	Wellbore #1	<b>Database:</b>	Landmark
<b>Reference Design:</b>	Plan #1 (5-20-13)	<b>Offset TVD Reference:</b>	Offset Datum

Offset Design													Offset Site Error:	0.0 ft
Survey Program: 0-MWD													Offset Well Error:	0.0 ft
Reference		Offset		Semi Major Axis			Distance							Warning
Measured Depth (ft)	Vertical Depth (ft)	Measured Depth (ft)	Vertical Depth (ft)	Reference (ft)	Offset (ft)	Highside Toolface (°)	Offset Wellbore Centre +N/-S (ft)	+E/-W (ft)	Between Centres (ft)	Between Ellipses (ft)	Minimum Separation (ft)	Separation Factor		
0.0	0.0	1.0	1.0	0.0	0.0	-11.42	44.1	-8.9	45.0	45.0	0.00	N/A		
100.0	100.0	101.0	101.0	0.1	0.1	-11.42	44.1	-8.9	45.0	44.8	0.23	198.143		
200.0	200.0	201.0	201.0	0.3	0.3	-11.42	44.1	-8.9	45.0	44.3	0.68	66.486		
300.0	300.0	301.0	301.0	0.6	0.6	-11.42	44.1	-8.9	45.0	43.9	1.13	39.945		
400.0	400.0	401.0	401.0	0.8	0.8	-11.42	44.1	-8.9	45.0	43.4	1.58	28.548		
500.0	500.0	501.0	501.0	1.0	1.0	-11.42	44.1	-8.9	45.0	43.0	2.03	22.211		
600.0	600.0	601.0	601.0	1.2	1.2	-11.42	44.1	-8.9	45.0	42.5	2.47	18.177		
666.3	666.3	667.3	667.3	1.4	1.4	-11.42	44.1	-8.9	45.0	42.2	2.77	16.222 CC		
700.0	700.0	701.0	701.0	1.5	1.5	-11.42	44.1	-8.9	45.0	42.1	2.92	15.383		
800.0	800.0	800.0	800.0	1.7	1.7	-11.91	45.7	-9.6	46.7	43.3	3.37	13.851		
900.0	900.0	897.7	897.5	1.9	1.9	-13.15	50.3	-11.7	51.8	47.9	3.82	13.554		
1,000.0	1,000.0	995.4	994.9	2.1	2.1	-14.74	57.9	-15.2	60.2	55.9	4.27	14.095		
1,100.0	1,100.0	1,092.5	1,091.3	2.4	2.4	-16.34	68.5	-20.1	72.0	67.3	4.73	15.233		
1,200.0	1,200.0	1,188.7	1,186.3	2.6	2.7	-17.74	81.9	-26.2	87.2	82.0	5.19	16.799		
1,300.0	1,300.0	1,285.4	1,281.4	2.8	3.0	-18.91	97.9	-33.5	105.4	99.7	5.67	18.598		
1,400.0	1,400.0	1,383.7	1,377.9	3.0	3.3	-19.76	114.6	-41.2	123.9	117.8	6.14	20.195		
1,500.0	1,500.0	1,482.2	1,474.8	3.3	3.6	-2.64	131.3	-48.8	140.8	134.3	6.55	21.514		
1,600.0	1,599.8	1,581.3	1,572.1	3.5	4.0	-3.22	148.2	-56.5	154.3	147.3	7.00	22.038		
1,700.0	1,699.5	1,680.8	1,669.8	3.7	4.4	-3.79	165.0	-64.2	164.3	156.9	7.45	22.042		
1,800.0	1,798.7	1,780.5	1,767.8	4.0	4.8	-4.38	182.0	-72.0	170.9	163.0	7.91	21.608		
1,900.0	1,897.5	1,880.5	1,866.0	4.2	5.1	-5.02	198.9	-79.8	174.0	165.6	8.36	20.815		
2,000.0	1,995.6	1,980.4	1,964.2	4.5	5.5	-5.77	215.9	-87.5	173.6	164.8	8.81	19.717		
2,100.0	2,093.1	2,080.3	2,062.4	4.8	5.9	-6.66	232.8	-95.3	169.9	160.6	9.25	18.359		
2,200.0	2,189.6	2,180.0	2,160.3	5.2	6.3	-7.76	249.8	-103.0	162.7	153.0	9.70	16.775		
2,300.0	2,285.3	2,279.4	2,257.9	5.6	6.7	-9.17	266.6	-110.7	152.1	142.0	10.14	14.994		
2,400.0	2,380.0	2,378.4	2,355.2	6.1	7.1	-11.00	283.4	-118.4	138.9	128.2	10.65	13.043		
2,500.0	2,474.7	2,477.3	2,452.4	6.6	7.5	-13.22	300.2	-126.1	125.5	114.3	11.20	11.204		
2,600.0	2,569.4	2,576.3	2,549.7	7.1	7.9	-15.96	317.0	-133.8	112.4	100.6	11.80	9.525		
2,700.0	2,664.0	2,675.3	2,646.9	7.7	8.3	-19.41	333.8	-141.5	99.6	87.1	12.47	7.990		
2,800.0	2,758.7	2,774.3	2,744.1	8.3	8.7	-23.85	350.6	-149.2	87.3	74.0	13.25	6.588		
2,900.0	2,853.4	2,873.3	2,841.4	8.8	9.1	-29.69	367.4	-156.8	75.6	61.4	14.22	5.318		
3,000.0	2,948.1	2,972.2	2,938.6	9.4	9.5	-37.52	384.2	-164.5	65.0	49.5	15.51	4.194		
3,100.0	3,042.7	3,071.2	3,035.8	10.0	9.9	-48.06	401.0	-172.2	56.1	38.9	17.24	3.254		
3,200.0	3,137.4	3,170.2	3,133.1	10.6	10.3	-61.86	417.8	-179.9	49.7	30.3	19.39	2.564		
3,300.0	3,232.1	3,269.2	3,230.3	11.2	10.7	-78.36	434.6	-187.6	47.0	25.4	21.52	2.182		
3,315.7	3,247.0	3,284.7	3,245.6	11.3	10.8	-81.07	437.2	-188.8	46.9	25.1	21.81	2.151 ES		
3,400.0	3,326.7	3,368.1	3,327.6	11.8	11.1	-95.31	451.4	-195.3	48.4	25.5	22.95	2.110		
3,500.0	3,421.4	3,467.1	3,424.8	12.5	11.5	-110.10	468.2	-203.0	53.8	30.3	23.48	2.290		
3,600.0	3,516.1	3,566.1	3,522.0	13.1	12.0	-121.64	485.0	-210.6	62.0	38.5	23.52	2.637		
3,700.0	3,610.7	3,665.1	3,619.3	13.7	12.4	-130.24	501.8	-218.3	72.2	48.7	23.43	3.081		
3,800.0	3,705.4	3,764.0	3,716.5	14.3	12.8	-136.63	518.6	-226.0	83.5	60.1	23.39	3.571		
3,900.0	3,800.1	3,863.0	3,813.7	14.9	13.2	-141.46	535.4	-233.7	95.7	72.2	23.46	4.078		
4,000.0	3,894.8	3,962.0	3,911.0	15.6	13.6	-145.19	552.2	-241.4	108.3	84.7	23.62	4.586		
4,100.0	3,989.4	4,061.0	4,008.2	16.2	14.0	-148.12	569.0	-249.1	121.4	97.5	23.87	5.084		
4,200.0	4,084.1	4,159.9	4,105.5	16.8	14.4	-150.49	585.8	-256.8	134.6	110.5	24.18	5.568		
4,300.0	4,178.8	4,258.9	4,202.7	17.5	14.8	-152.43	602.6	-264.5	148.1	123.6	24.54	6.035		
4,400.0	4,273.4	4,357.9	4,299.9	18.1	15.2	-154.05	619.4	-272.1	161.7	136.8	24.94	6.483		
4,500.0	4,368.1	4,456.9	4,397.2	18.7	15.6	-155.41	636.2	-279.8	175.4	150.0	25.38	6.913		
4,600.0	4,462.8	4,555.9	4,494.4	19.4	16.0	-156.58	653.0	-287.5	189.2	163.4	25.83	7.324		
4,700.0	4,557.5	4,654.8	4,591.6	20.0	16.4	-157.58	669.8	-295.2	203.1	176.8	26.31	7.718		
4,800.0	4,652.1	4,753.8	4,688.9	20.6	16.8	-158.46	686.6	-302.9	217.0	190.2	26.80	8.095		
4,900.0	4,746.8	4,852.8	4,786.1	21.3	17.2	-159.23	703.4	-310.6	230.9	203.6	27.31	8.456		

CC - Min centre to center distance or convergent point, SF - min separation factor, ES - min ellipse separation



<b>Company:</b>	Synergy Resources	<b>Local Co-ordinate Reference:</b>	Well SRC Kelly Farms 21-4-3NHZ #2
<b>Project:</b>	SEC.4-T5N-R66W	<b>TVD Reference:</b>	WELL @ 4766.0ft (Original Well Elev)
<b>Reference Site:</b>	SRC Kelly Farms Pad Sec.4-T5N-R66W	<b>MD Reference:</b>	WELL @ 4766.0ft (Original Well Elev)
<b>Site Error:</b>	0.0ft	<b>North Reference:</b>	True
<b>Reference Well:</b>	SRC Kelly Farms 21-4-3NHZ #2	<b>Survey Calculation Method:</b>	Minimum Curvature
<b>Well Error:</b>	0.0ft	<b>Output errors are at</b>	2.00 sigma
<b>Reference Wellbore</b>	Wellbore #1	<b>Database:</b>	Landmark
<b>Reference Design:</b>	Plan #1 (5-20-13)	<b>Offset TVD Reference:</b>	Offset Datum

Offset Design												Offset Site Error:	0.0 ft
Survey Program: 0-MWD												Offset Well Error:	0.0 ft
Reference		Offset		Semi Major Axis			Distance						Warning
Measured Depth (ft)	Vertical Depth (ft)	Measured Depth (ft)	Vertical Depth (ft)	Reference (ft)	Offset (ft)	Highside Toolface (°)	Offset Wellbore Centre +N/-S (ft)	+E/-W (ft)	Between Centres (ft)	Between Ellipses (ft)	Minimum Separation (ft)	Separation Factor	
5,000.0	4,841.5	4,951.8	4,883.3	21.9	17.7	-159.92	720.2	-318.3	244.9	217.1	27.83	8.802	
5,100.0	4,936.1	5,050.7	4,980.6	22.6	18.1	-160.53	736.9	-325.9	258.9	230.6	28.35	9.133	
5,200.0	5,030.8	5,149.7	5,077.8	23.2	18.5	-161.08	753.7	-333.6	273.0	244.1	28.89	9.450	
5,300.0	5,125.5	5,248.7	5,175.1	23.8	18.9	-161.57	770.5	-341.3	287.1	257.6	29.43	9.754	
5,400.0	5,220.2	5,347.7	5,272.3	24.5	19.3	-162.02	787.3	-349.0	301.1	271.2	29.98	10.045	
5,500.0	5,314.9	5,446.7	5,369.6	25.1	19.7	-162.45	804.1	-356.7	315.0	284.4	30.55	10.311	
5,600.0	5,410.5	5,546.0	5,467.2	25.6	20.1	-162.72	821.0	-364.4	326.2	295.0	31.13	10.478	
5,700.0	5,507.1	5,645.7	5,565.1	26.0	20.5	-162.79	837.9	-372.1	334.0	302.3	31.71	10.531	
5,800.0	5,604.6	5,745.6	5,663.3	26.4	20.9	-162.66	854.9	-379.9	338.5	306.2	32.31	10.477	
5,900.0	5,702.7	5,845.6	5,761.5	26.7	21.3	-162.34	871.8	-387.7	339.7	306.8	32.91	10.323	
6,000.0	5,801.5	5,936.2	5,850.7	27.0	21.6	-161.97	886.0	-394.2	338.9	305.5	33.40	10.146	
6,100.0	5,900.7	6,026.5	5,940.1	27.2	21.9	-161.62	897.6	-399.5	337.6	303.8	33.81	9.985	
6,200.0	6,000.4	6,116.9	6,029.9	27.4	22.1	-161.32	906.7	-403.6	336.0	301.8	34.16	9.834	
6,300.0	6,100.2	6,207.3	6,120.1	27.6	22.3	-161.04	913.1	-406.6	333.8	299.4	34.45	9.691	
6,400.0	6,200.2	6,300.0	6,212.7	27.7	22.4	-178.55	917.1	-408.4	331.2	283.4	47.80	6.930	
6,500.0	6,300.2	6,388.5	6,301.2	27.8	22.6	-178.45	918.3	-408.9	329.8	281.8	48.00	6.872	
6,516.5	6,316.7	6,405.0	6,317.7	27.8	22.6	91.57	918.3	-408.9	329.8	294.8	35.03	9.415	
6,600.0	6,400.1	6,488.4	6,401.1	27.9	22.7	92.06	918.3	-408.9	329.9	294.5	35.44	9.309	
6,700.0	6,498.7	6,587.1	6,499.7	27.9	22.8	94.71	918.3	-408.9	330.9	294.5	36.43	9.083	
6,800.0	6,594.2	6,689.5	6,601.9	27.9	22.9	98.69	918.3	-402.8	333.8	296.2	37.63	8.871	
6,900.0	6,684.5	6,796.2	6,706.3	27.9	22.9	102.53	918.3	-381.1	338.2	299.8	38.44	8.797	
7,000.0	6,768.1	6,907.1	6,810.1	27.8	22.9	106.10	918.3	-342.4	343.8	305.0	38.78	8.865	
7,100.0	6,843.3	7,022.4	6,910.3	27.7	22.8	109.32	918.3	-285.8	350.1	311.4	38.70	9.047	
7,200.0	6,908.5	7,142.0	7,003.3	27.7	22.7	112.11	918.3	-210.8	356.6	318.2	38.41	9.284	
7,300.0	6,962.6	7,265.6	7,085.0	27.6	22.6	114.39	918.3	-118.1	362.6	324.3	38.29	9.470	
7,400.0	7,004.5	7,392.9	7,151.1	27.5	22.4	116.11	918.3	-9.6	367.5	328.8	38.77	9.480	
7,500.0	7,033.3	7,522.8	7,197.7	27.5	22.4	117.23	918.3	111.4	370.9	330.7	40.25	9.215	
7,600.0	7,048.5	7,654.3	7,221.9	27.6	22.7	117.70	918.3	240.5	372.4	329.5	42.92	8.676	
7,700.0	7,051.0	7,770.4	7,225.0	27.8	24.3	117.69	918.3	356.6	372.3	326.1	46.26	8.049	
7,800.0	7,051.0	7,870.4	7,225.0	28.5	26.2	117.69	918.3	456.6	372.3	322.8	49.59	7.508	
7,900.0	7,051.0	7,970.4	7,225.0	29.8	28.2	117.69	918.3	556.6	372.3	319.2	53.19	7.000	
8,000.0	7,051.0	8,070.4	7,225.0	31.6	30.4	117.69	918.3	656.6	372.3	315.3	57.01	6.531	
8,100.0	7,051.0	8,170.4	7,225.0	33.7	32.7	117.69	918.3	756.6	372.3	311.3	61.00	6.104	
8,200.0	7,051.0	8,270.4	7,225.0	35.9	35.0	117.69	918.3	856.6	372.3	307.2	65.13	5.717	
8,300.0	7,051.0	8,370.4	7,225.0	38.2	37.4	117.69	918.3	956.6	372.3	303.0	69.39	5.366	
8,400.0	7,051.0	8,470.4	7,225.0	40.6	39.8	117.69	918.3	1,056.6	372.3	298.6	73.73	5.050	
8,500.0	7,051.0	8,570.4	7,225.0	43.0	42.3	117.69	918.3	1,156.6	372.3	294.2	78.16	4.764	
8,600.0	7,051.0	8,670.4	7,225.0	45.5	44.9	117.69	918.3	1,256.6	372.3	289.7	82.66	4.504	
8,700.0	7,051.0	8,770.4	7,225.0	48.0	47.4	117.69	918.3	1,356.6	372.3	285.1	87.22	4.269	
8,800.0	7,051.0	8,870.4	7,225.0	50.6	50.0	117.69	918.3	1,456.6	372.3	280.5	91.82	4.055	
8,900.0	7,051.0	8,970.4	7,225.0	53.1	52.6	117.69	918.3	1,556.6	372.3	275.9	96.47	3.860	
9,000.0	7,051.0	9,070.4	7,225.0	55.7	55.2	117.69	918.3	1,656.6	372.3	271.2	101.15	3.681	
9,100.0	7,051.0	9,170.4	7,225.0	58.4	57.9	117.69	918.3	1,756.6	372.3	266.5	105.87	3.517	
9,200.0	7,051.0	9,270.4	7,225.0	61.0	60.5	117.69	918.3	1,856.6	372.3	261.7	110.61	3.366	
9,300.0	7,051.0	9,370.4	7,225.0	63.6	63.2	117.69	918.3	1,956.6	372.3	257.0	115.37	3.227	
9,400.0	7,051.0	9,470.4	7,225.0	66.3	65.9	117.69	918.3	2,056.6	372.3	252.2	120.16	3.099	
9,500.0	7,051.0	9,570.4	7,225.0	69.0	68.6	117.69	918.3	2,156.6	372.3	247.4	124.97	2.980	
9,600.0	7,051.0	9,670.4	7,225.0	71.7	71.3	117.69	918.3	2,256.6	372.3	242.6	129.79	2.869	
9,700.0	7,051.0	9,770.4	7,225.0	74.4	74.0	117.69	918.3	2,356.6	372.3	237.7	134.62	2.766	
9,800.0	7,051.0	9,870.4	7,225.0	77.1	76.7	117.69	918.3	2,456.6	372.3	232.9	139.47	2.670	
9,900.0	7,051.0	9,970.4	7,225.0	79.8	79.4	117.69	918.3	2,556.6	372.3	228.0	144.34	2.580	
10,000.0	7,051.0	10,070.4	7,225.0	82.5	82.1	117.69	918.3	2,656.6	372.3	223.1	149.21	2.495	

CC - Min centre to center distance or convergent point, SF - min separation factor, ES - min ellipse separation

Offset Design      SRC Kelly Farms Pad Sec.4-T5N-R66W - SRC Kelly Farms A-4-3CHZ - Wellbore #1 - Plan #1 (5-20-13)													Offset Site Error:      0.0 ft	
Survey Program: 0-MWD													Offset Well Error:      0.0 ft	
Reference		Offset		Semi Major Axis			Distance							
Measured Depth	Vertical Depth	Measured Depth	Vertical Depth	Reference	Offset	Highside Toolface	Offset Wellbore Centre		Between Centres	Between Ellipses	Minimum Separation	Separation Factor	Warning	
(ft)	(ft)	(ft)	(ft)	(ft)	(ft)	(°)	+N/-S (ft)	+E/-W (ft)	(ft)	(ft)	(ft)			
10,100.0	7,051.0	10,170.4	7,225.0	85.2	84.9	117.69	918.3	2,756.6	372.3	218.3	154.09	2.416		
10,200.0	7,051.0	10,270.4	7,225.0	87.9	87.6	117.69	918.3	2,856.6	372.3	213.4	158.98	2.342		
10,300.0	7,051.0	10,370.4	7,225.0	90.7	90.3	117.69	918.3	2,956.6	372.3	208.5	163.88	2.272		
10,400.0	7,051.0	10,470.4	7,225.0	93.4	93.1	117.69	918.3	3,056.6	372.3	203.6	168.79	2.206		
10,500.0	7,051.0	10,570.4	7,225.0	96.1	95.8	117.69	918.3	3,156.6	372.3	198.6	173.70	2.144		
10,600.0	7,051.0	10,670.4	7,225.0	98.9	98.6	117.69	918.3	3,256.6	372.3	193.7	178.62	2.085		
10,700.0	7,051.0	10,770.4	7,225.0	101.6	101.3	117.69	918.3	3,356.6	372.3	188.8	183.55	2.029		
10,800.0	7,051.0	10,870.4	7,225.0	104.4	104.1	117.69	918.3	3,456.6	372.3	183.9	188.48	1.976		
10,900.0	7,051.0	10,970.4	7,225.0	107.1	106.9	117.69	918.3	3,556.6	372.3	178.9	193.41	1.925		
11,000.0	7,051.0	11,070.4	7,225.0	109.9	109.6	117.69	918.3	3,656.6	372.3	174.0	198.35	1.877		
11,100.0	7,051.0	11,170.4	7,225.0	112.6	112.4	117.69	918.3	3,756.6	372.3	169.0	203.30	1.832		
11,200.0	7,051.0	11,270.4	7,225.0	115.4	115.2	117.69	918.3	3,856.6	372.3	164.1	208.24	1.788		
11,300.0	7,051.0	11,370.4	7,225.0	118.2	117.9	117.69	918.3	3,956.6	372.3	159.1	213.20	1.746		
11,400.0	7,051.0	11,470.4	7,225.0	120.9	120.7	117.69	918.3	4,056.6	372.3	154.2	218.15	1.707		
11,500.0	7,051.0	11,570.4	7,225.0	123.7	123.5	117.69	918.3	4,156.6	372.3	149.2	223.11	1.669		
11,600.0	7,051.0	11,670.4	7,225.0	126.5	126.2	117.69	918.3	4,256.6	372.3	144.3	228.07	1.633		
11,700.0	7,051.0	11,770.4	7,225.0	129.2	129.0	117.69	918.3	4,356.6	372.3	139.3	233.03	1.598		
11,800.0	7,051.0	11,870.4	7,225.0	132.0	131.8	117.69	918.3	4,456.6	372.3	134.3	238.00	1.564		
11,900.0	7,051.0	11,970.4	7,225.0	134.8	134.6	117.69	918.3	4,556.6	372.3	129.4	242.97	1.532		
12,000.0	7,051.0	12,070.4	7,225.0	137.6	137.3	117.69	918.3	4,656.6	372.3	124.4	247.94	1.502		
12,100.0	7,051.0	12,170.4	7,225.0	140.3	140.1	117.69	918.3	4,756.6	372.3	119.4	252.91	1.472	Level 3	
12,200.0	7,051.0	12,270.4	7,225.0	143.1	142.9	117.69	918.3	4,856.6	372.3	114.5	257.89	1.444	Level 3	
12,300.0	7,051.0	12,370.4	7,225.0	145.9	145.7	117.69	918.3	4,956.6	372.3	109.5	262.86	1.416	Level 3	
12,400.0	7,051.0	12,470.4	7,225.0	148.7	148.5	117.69	918.3	5,056.6	372.3	104.5	267.84	1.390	Level 3	
12,500.0	7,051.0	12,570.4	7,225.0	151.5	151.3	117.69	918.3	5,156.6	372.3	99.5	272.82	1.365	Level 3	
12,558.5	7,051.0	12,628.9	7,225.0	153.1	152.9	117.69	918.3	5,215.1	372.3	96.6	275.74	1.350	Level 3	
12,600.0	7,051.0	12,642.1	7,225.0	154.2	153.2	117.69	918.3	5,228.3	373.4	96.3	277.10	1.348	Level 3, SF	
12,600.6	7,051.0	12,642.1	7,225.0	154.2	153.2	117.69	918.3	5,228.3	373.5	96.3	277.11	1.348	Level 3	



SRC Kelly Farms Pad Sec.4-T5N-R66W - SRC Kelly Farms A-4-3NHZ - Wellbore #1 - Plan #1 (5-20-13)													Offset Site Error:	0.0 ft
Survey Program: 0-MWD													Offset Well Error:	0.0 ft
Reference		Offset		Semi Major Axis			Distance							
Measured Depth Depth (ft)	Vertical Depth (ft)	Measured Depth Depth (ft)	Vertical Depth (ft)	Reference (ft)	Offset (ft)	Highside Toolface (°)	Offset Wellbore Centre +N/-S (ft)	+E/-W (ft)	Between Centres (ft)	Between Ellipses (ft)	Minimum Separation (ft)	Separation Factor	Warning	
0.0	0.0	1.0	1.0	0.0	0.0	-11.39	66.3	-13.4	67.6	67.6	0.00	N/A		
100.0	100.0	101.0	101.0	0.1	0.1	-11.39	66.3	-13.4	67.6	67.4	0.23	297.948		
200.0	200.0	201.0	201.0	0.3	0.3	-11.39	66.3	-13.4	67.6	67.0	0.68	99.976		
300.0	300.0	301.0	301.0	0.6	0.6	-11.39	66.3	-13.4	67.6	66.5	1.13	60.065		
366.3	366.3	367.3	367.3	0.7	0.7	-11.39	66.3	-13.4	67.6	66.2	1.42	47.490 CC		
400.0	400.0	400.0	400.0	0.8	0.8	-11.39	66.3	-13.4	67.6	66.1	1.57	42.994 ES		
500.0	500.0	498.9	498.8	1.0	1.0	-12.02	67.7	-14.4	69.2	67.2	2.02	34.276		
600.0	600.0	596.5	596.4	1.2	1.2	-13.70	71.7	-17.5	73.9	71.4	2.47	29.946		
700.0	700.0	693.7	693.2	1.5	1.5	-16.05	78.2	-22.5	81.8	78.9	2.92	27.964		
800.0	800.0	790.2	789.0	1.7	1.7	-18.66	87.4	-29.5	93.0	89.6	3.39	27.411		
900.0	900.0	889.0	886.9	1.9	2.0	-21.06	98.2	-37.8	106.2	102.3	3.87	27.442		
1,000.0	1,000.0	988.1	985.0	2.1	2.3	-22.93	109.1	-46.2	119.6	115.2	4.35	27.514		
1,100.0	1,100.0	1,087.1	1,083.0	2.4	2.6	-24.43	120.0	-54.5	133.0	128.2	4.82	27.586		
1,200.0	1,200.0	1,186.1	1,181.1	2.6	2.9	-25.65	130.9	-62.9	146.6	141.3	5.30	27.655		
1,300.0	1,300.0	1,285.2	1,279.2	2.8	3.3	-26.67	141.8	-71.2	160.2	154.4	5.78	27.720		
1,400.0	1,400.0	1,384.2	1,377.3	3.0	3.6	-27.52	152.7	-79.5	173.8	167.5	6.26	27.781		
1,500.0	1,500.0	1,483.5	1,475.6	3.3	3.9	-10.54	163.6	-87.9	185.7	179.1	6.60	28.140		
1,600.0	1,599.8	1,583.0	1,574.2	3.5	4.3	-11.43	174.5	-96.3	194.3	187.3	7.06	27.536		
1,700.0	1,699.5	1,682.8	1,673.0	3.7	4.6	-12.48	185.5	-104.7	199.6	192.1	7.51	26.575		
1,800.0	1,798.7	1,782.7	1,771.9	4.0	4.9	-13.71	196.5	-113.1	201.5	193.5	7.96	25.321		
1,900.0	1,897.5	1,882.6	1,870.8	4.2	5.3	-15.19	207.5	-121.5	200.1	191.7	8.40	23.823		
2,000.0	1,995.6	1,982.3	1,969.6	4.5	5.6	-17.00	218.4	-129.9	195.6	186.7	8.84	22.116		
2,100.0	2,093.1	2,081.7	2,068.0	4.8	5.9	-19.26	229.4	-138.3	187.9	178.6	9.29	20.228		
2,200.0	2,189.6	2,180.7	2,166.1	5.2	6.3	-22.14	240.3	-146.7	177.3	167.6	9.75	18.180		
2,300.0	2,285.3	2,279.2	2,263.7	5.6	6.6	-25.91	251.1	-155.0	164.1	153.8	10.26	15.991		
2,400.0	2,380.0	2,377.2	2,360.7	6.1	6.9	-30.77	261.9	-163.2	149.2	138.3	10.88	13.704		
2,500.0	2,474.7	2,475.2	2,457.8	6.6	7.3	-36.65	272.6	-171.5	135.3	123.7	11.65	11.612		
2,600.0	2,569.4	2,573.2	2,554.8	7.1	7.6	-43.73	283.4	-179.7	123.2	110.6	12.59	9.784		
2,700.0	2,664.0	2,671.1	2,651.8	7.7	7.9	-52.14	294.2	-188.0	113.4	99.7	13.74	8.253		
2,800.0	2,758.7	2,769.1	2,748.8	8.3	8.3	-61.85	305.0	-196.2	106.5	91.4	15.08	7.063		
2,900.0	2,853.4	2,867.0	2,845.8	8.8	8.6	-72.48	315.7	-204.5	103.2	86.6	16.52	6.244		
2,937.3	2,888.7	2,903.6	2,882.0	9.1	8.7	-76.57	319.8	-207.6	102.9	85.8	17.06	6.033		
3,000.0	2,948.1	2,965.0	2,942.8	9.4	8.9	-83.41	326.5	-212.8	103.7	85.8	17.90	5.790		
3,100.0	3,042.7	3,063.0	3,039.8	10.0	9.3	-93.86	337.3	-221.0	108.0	88.9	19.09	5.656		
3,200.0	3,137.4	3,160.9	3,136.9	10.6	9.6	-103.26	348.1	-229.3	115.6	95.6	20.02	5.776		
3,300.0	3,232.1	3,258.9	3,233.9	11.2	9.9	-111.33	358.8	-237.5	126.1	105.4	20.74	6.079		
3,400.0	3,326.7	3,356.8	3,330.9	11.8	10.3	-118.09	369.6	-245.8	138.7	117.4	21.32	6.505		
3,500.0	3,421.4	3,454.8	3,427.9	12.5	10.6	-123.69	380.4	-254.0	152.9	131.1	21.81	7.009		
3,600.0	3,516.1	3,552.8	3,524.9	13.1	10.9	-128.31	391.1	-262.3	168.3	146.0	22.27	7.558		
3,700.0	3,610.7	3,650.7	3,621.9	13.7	11.3	-132.15	401.9	-270.5	184.6	161.9	22.71	8.129		
3,800.0	3,705.4	3,748.7	3,718.9	14.3	11.6	-135.36	412.7	-278.8	201.6	178.5	23.15	8.708		
3,900.0	3,800.1	3,846.6	3,816.0	14.9	11.9	-138.08	423.5	-287.0	219.1	195.5	23.61	9.283		
4,000.0	3,894.8	3,944.6	3,913.0	15.6	12.3	-140.38	434.2	-295.3	237.1	213.0	24.07	9.849		
4,100.0	3,989.4	4,042.6	4,010.0	16.2	12.6	-142.37	445.0	-303.6	255.3	230.8	24.55	10.402		
4,200.0	4,084.1	4,140.5	4,107.0	16.8	12.9	-144.09	455.8	-311.8	273.9	248.8	25.04	10.938		
4,300.0	4,178.8	4,238.5	4,204.0	17.5	13.3	-145.59	466.5	-320.1	292.6	267.0	25.54	11.457		
4,400.0	4,273.4	4,336.4	4,301.0	18.1	13.6	-146.91	477.3	-328.3	311.5	285.4	26.05	11.958		
4,500.0	4,368.1	4,434.4	4,398.0	18.7	13.9	-148.08	488.1	-336.6	330.5	303.9	26.57	12.441		
4,600.0	4,462.8	4,532.3	4,495.1	19.4	14.3	-149.12	498.9	-344.8	349.7	322.6	27.10	12.905		
4,700.0	4,557.5	4,630.3	4,592.1	20.0	14.6	-150.06	509.6	-353.1	368.9	341.3	27.63	13.351		
4,800.0	4,652.1	4,728.3	4,689.1	20.6	14.9	-150.90	520.4	-361.3	388.3	360.1	28.17	13.781		
4,900.0	4,746.8	4,826.2	4,786.1	21.3	15.3	-151.66	531.2	-369.6	407.7	379.0	28.72	14.193		

COMPASS 2003.21 Build 46

<b>Company:</b>	Synergy Resources	<b>Local Co-ordinate Reference:</b>	Well SRC Kelly Farms 21-4-3NHZ #2
<b>Project:</b>	SEC.4-T5N-R66W	<b>TVD Reference:</b>	WELL @ 4766.0ft (Original Well Elev)
<b>Reference Site:</b>	SRC Kelly Farms Pad Sec.4-T5N-R66W	<b>MD Reference:</b>	WELL @ 4766.0ft (Original Well Elev)
<b>Site Error:</b>	0.0ft	<b>North Reference:</b>	True
<b>Reference Well:</b>	SRC Kelly Farms 21-4-3NHZ #2	<b>Survey Calculation Method:</b>	Minimum Curvature
<b>Well Error:</b>	0.0ft	<b>Output errors are at</b>	2.00 sigma
<b>Reference Wellbore</b>	Wellbore #1	<b>Database:</b>	Landmark
<b>Reference Design:</b>	Plan #1 (5-20-13)	<b>Offset TVD Reference:</b>	Offset Datum

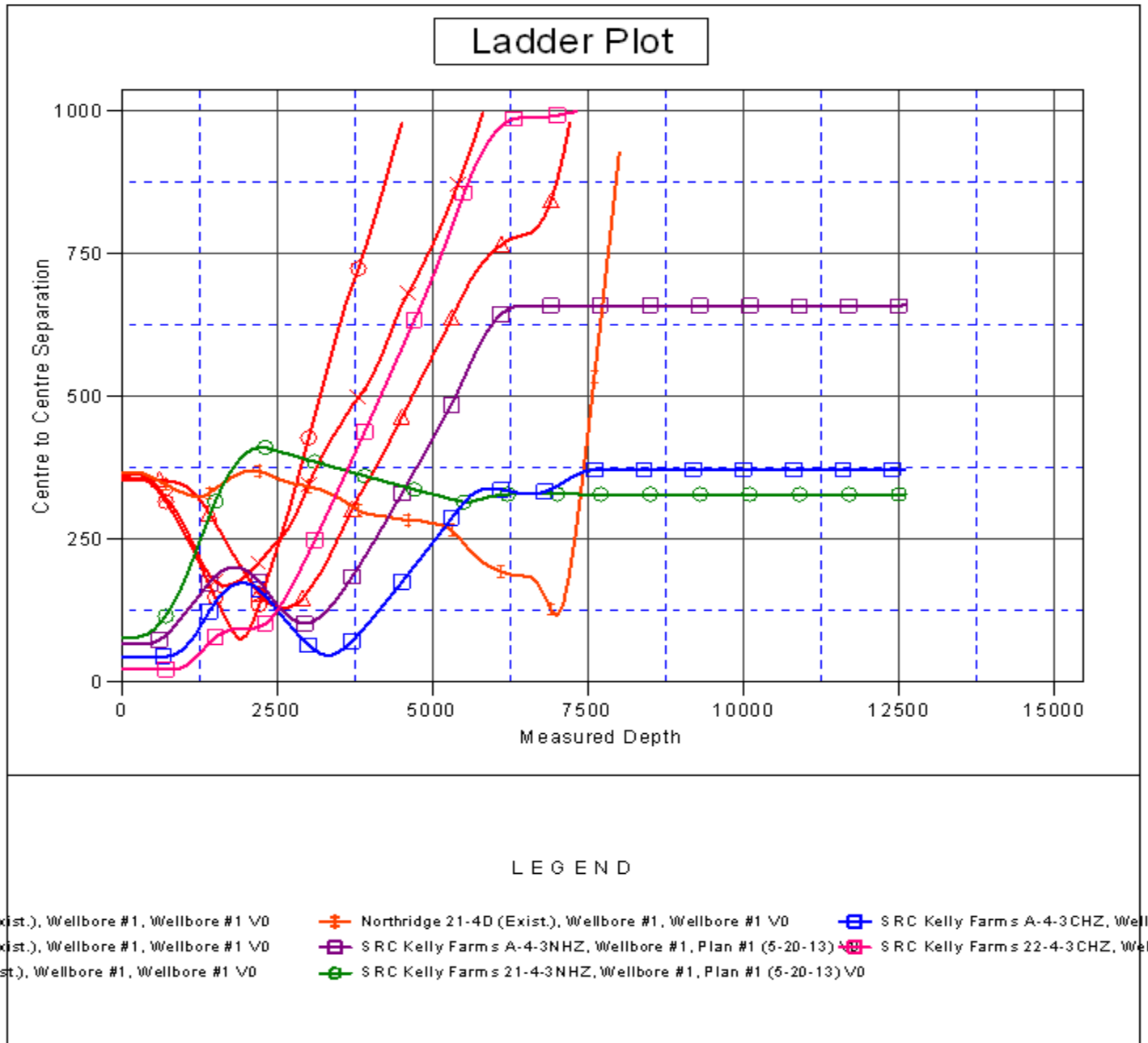
Offset Design													Offset Site Error:	0.0 ft
Survey Program: 0-MWD													Offset Well Error:	0.0 ft
Reference		Offset		Semi Major Axis			Distance							Warning
Measured Depth (ft)	Vertical Depth (ft)	Measured Depth (ft)	Vertical Depth (ft)	Reference (ft)	Offset (ft)	Highside Toolface (°)	Offset Wellbore Centre +N/-S (ft)	+E/-W (ft)	Between Centres (ft)	Between Ellipses (ft)	Minimum Separation (ft)	Separation Factor		
5,000.0	4,841.5	4,924.2	4,883.1	21.9	15.6	-152.35	541.9	-377.8	427.2	397.9	29.28	14.590		
5,100.0	4,936.1	5,022.1	4,980.1	22.6	15.9	-152.99	552.7	-386.1	446.7	416.9	29.84	14.971		
5,200.0	5,030.8	5,120.1	5,077.1	23.2	16.3	-153.57	563.5	-394.4	466.3	435.9	30.40	15.338		
5,300.0	5,125.5	5,210.4	5,166.6	23.8	16.6	-154.12	572.9	-401.5	486.5	455.6	30.91	15.739		
5,400.0	5,220.2	5,300.0	5,255.8	24.5	16.8	-154.85	580.0	-407.0	508.8	477.5	31.31	16.248		
5,500.0	5,314.9	5,382.3	5,337.9	25.1	16.9	-155.72	584.7	-410.6	533.0	501.3	31.67	16.832		
5,600.0	5,410.5	5,467.1	5,422.7	25.6	17.1	-156.75	587.5	-412.7	557.0	525.0	31.94	17.437		
5,700.0	5,507.1	5,552.6	5,508.1	26.0	17.2	-157.74	588.3	-413.4	580.0	547.9	32.17	18.028		
5,800.0	5,604.6	5,650.1	5,605.6	26.4	17.3	-158.71	588.3	-413.4	601.0	568.6	32.41	18.546		
5,900.0	5,702.7	5,748.2	5,703.7	26.7	17.5	-159.48	588.3	-413.4	618.9	586.2	32.65	18.951		
6,000.0	5,801.5	5,847.0	5,802.5	27.0	17.6	-160.07	588.3	-413.4	633.5	600.6	32.90	19.255		
6,100.0	5,900.7	5,946.2	5,901.7	27.2	17.8	-160.52	588.3	-413.4	645.0	611.9	33.14	19.461		
6,200.0	6,000.4	6,045.8	6,001.4	27.4	17.9	-160.83	588.3	-413.4	653.2	619.9	33.38	19.573		
6,300.0	6,100.2	6,145.7	6,101.2	27.6	18.1	-161.01	588.3	-413.4	658.2	624.6	33.59	19.593		
6,400.0	6,200.2	6,245.7	6,201.2	27.7	18.3	-178.84	588.3	-413.4	659.8	616.4	43.40	15.203		
6,500.0	6,300.2	6,345.7	6,301.2	27.8	18.4	-178.84	588.3	-413.4	659.8	616.2	43.68	15.107		
6,600.0	6,400.1	6,446.9	6,402.3	27.9	18.6	91.18	588.3	-410.5	659.8	625.4	34.43	19.162		
6,700.0	6,498.7	6,548.8	6,502.9	27.9	18.6	91.19	588.3	-394.3	659.8	625.3	34.56	19.093		
6,800.0	6,594.2	6,650.8	6,600.1	27.9	18.6	91.18	588.3	-364.0	659.8	625.3	34.55	19.099		
6,900.0	6,684.5	6,752.7	6,692.0	27.9	18.5	91.14	588.3	-320.2	659.8	625.3	34.48	19.139		
7,000.0	6,768.1	6,854.5	6,776.8	27.8	18.5	91.08	588.3	-263.8	659.8	625.3	34.46	19.146		
7,100.0	6,843.3	6,956.2	6,852.6	27.7	18.3	91.00	588.3	-196.2	659.8	625.1	34.66	19.034		
7,200.0	6,908.5	7,057.8	6,917.9	27.7	18.3	90.90	588.3	-118.6	659.7	624.5	35.26	18.713		
7,300.0	6,962.6	7,159.1	6,971.6	27.6	18.2	90.78	588.3	-32.6	659.7	623.3	36.40	18.122		
7,400.0	7,004.5	7,260.3	7,012.5	27.5	18.5	90.65	588.4	59.8	659.7	621.5	38.20	17.269		
7,500.0	7,033.3	7,361.2	7,040.0	27.5	19.7	90.50	588.4	156.8	659.7	619.0	40.65	16.229		
7,600.0	7,048.5	7,461.9	7,053.5	27.6	21.4	90.35	588.4	256.5	659.6	616.0	43.66	15.109		
7,700.0	7,051.0	7,562.1	7,055.0	27.8	23.2	90.26	588.4	356.7	659.6	612.5	47.11	14.002		
7,800.0	7,051.0	7,662.1	7,055.0	28.5	25.2	90.26	588.4	456.7	659.6	608.7	50.92	12.953		
7,900.0	7,051.0	7,762.1	7,055.0	29.8	27.3	90.26	588.4	556.7	659.6	604.5	55.04	11.984		
8,000.0	7,051.0	7,862.1	7,055.0	31.6	29.5	90.26	588.4	656.7	659.6	600.2	59.41	11.103		
8,100.0	7,051.0	7,962.1	7,055.0	33.7	31.8	90.26	588.4	756.7	659.6	595.6	63.97	10.311		
8,200.0	7,051.0	8,062.1	7,055.0	35.9	34.2	90.26	588.4	856.7	659.6	590.9	68.69	9.602		
8,300.0	7,051.0	8,162.1	7,055.0	38.2	36.7	90.26	588.5	956.7	659.5	586.0	73.53	8.969		
8,400.0	7,051.0	8,262.1	7,055.0	40.6	39.2	90.26	588.5	1,056.7	659.5	581.1	78.48	8.404		
8,500.0	7,051.0	8,362.1	7,055.0	43.0	41.7	90.26	588.5	1,156.7	659.5	576.0	83.51	7.897		
8,600.0	7,051.0	8,462.1	7,055.0	45.5	44.2	90.26	588.5	1,256.7	659.5	570.9	88.61	7.443		
8,700.0	7,051.0	8,562.1	7,055.0	48.0	46.8	90.26	588.5	1,356.7	659.5	565.7	93.78	7.033		
8,800.0	7,051.0	8,662.1	7,055.0	50.6	49.5	90.26	588.5	1,456.7	659.5	560.5	98.99	6.662		
8,900.0	7,051.0	8,762.1	7,055.0	53.1	52.1	90.26	588.5	1,556.7	659.5	555.2	104.24	6.327		
9,000.0	7,051.0	8,862.1	7,055.0	55.7	54.7	90.26	588.5	1,656.7	659.5	549.9	109.53	6.021		
9,100.0	7,051.0	8,962.1	7,055.0	58.4	57.4	90.26	588.5	1,756.7	659.5	544.6	114.85	5.742		
9,200.0	7,051.0	9,062.1	7,055.0	61.0	60.1	90.26	588.6	1,856.7	659.4	539.2	120.19	5.486		
9,300.0	7,051.0	9,162.1	7,055.0	63.6	62.8	90.26	588.6	1,956.7	659.4	533.9	125.56	5.252		
9,400.0	7,051.0	9,262.1	7,055.0	66.3	65.5	90.26	588.6	2,056.7	659.4	528.5	130.96	5.035		
9,500.0	7,051.0	9,362.1	7,055.0	69.0	68.2	90.26	588.6	2,156.7	659.4	523.0	136.36	4.836		
9,600.0	7,051.0	9,462.1	7,055.0	71.7	70.9	90.26	588.6	2,256.7	659.4	517.6	141.79	4.651		
9,700.0	7,051.0	9,562.1	7,055.0	74.4	73.6	90.26	588.6	2,356.7	659.4	512.2	147.23	4.479		
9,800.0	7,051.0	9,662.1	7,055.0	77.1	76.4	90.26	588.6	2,456.7	659.4	506.7	152.68	4.319		
9,900.0	7,051.0	9,762.1	7,055.0	79.8	79.1	90.26	588.6	2,556.7	659.4	501.2	158.15	4.169		
10,000.0	7,051.0	9,862.1	7,055.0	82.5	81.8	90.26	588.6	2,656.7	659.4	495.7	163.62	4.030		
10,100.0	7,051.0	9,962.1	7,055.0	85.2	84.6	90.26	588.7	2,756.7	659.3	490.2	169.10	3.899		

CC - Min centre to center distance or convergent point, SF - min separation factor, ES - min ellipse separation

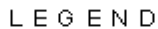
SRC Kelly Farms Pad Sec.4-T5N-R66W - SRC Kelly Farms A-4-3NHZ - Wellbore #1 - Plan #1 (5-20-13)													Offset Site Error:	0.0 ft
Survey Program: 0-MWD													Offset Well Error:	0.0 ft
Reference		Offset		Semi Major Axis			Distance							
Measured Depth	Vertical Depth	Measured Depth	Vertical Depth	Reference	Offset	Highside Toolface	Offset Wellbore Centre		Between Centres	Between Ellipses	Minimum Separation	Separation Factor	Warning	
(ft)	(ft)	(ft)	(ft)	(ft)	(ft)	(°)	+N/-S (ft)	+E/-W (ft)	(ft)	(ft)	(ft)			
10,200.0	7,051.0	10,062.1	7,055.0	87.9	87.3	90.26	588.7	2,856.7	659.3	484.7	174.59	3.776		
10,300.0	7,051.0	10,162.1	7,055.0	90.7	90.1	90.26	588.7	2,956.7	659.3	479.2	180.09	3.661		
10,400.0	7,051.0	10,262.1	7,055.0	93.4	92.8	90.26	588.7	3,056.7	659.3	473.7	185.60	3.552		
10,500.0	7,051.0	10,362.1	7,055.0	96.1	95.6	90.26	588.7	3,156.7	659.3	468.2	191.11	3.450		
10,600.0	7,051.0	10,462.1	7,055.0	98.9	98.3	90.26	588.7	3,256.7	659.3	462.7	196.63	3.353		
10,700.0	7,051.0	10,562.1	7,055.0	101.6	101.1	90.26	588.7	3,356.7	659.3	457.1	202.16	3.261		
10,800.0	7,051.0	10,662.1	7,055.0	104.4	103.9	90.26	588.7	3,456.7	659.3	451.6	207.68	3.174		
10,900.0	7,051.0	10,762.1	7,055.0	107.1	106.6	90.26	588.7	3,556.7	659.2	446.0	213.22	3.092		
11,000.0	7,051.0	10,862.1	7,055.0	109.9	109.4	90.26	588.8	3,656.7	659.2	440.5	218.75	3.014		
11,100.0	7,051.0	10,962.1	7,055.0	112.6	112.2	90.26	588.8	3,756.7	659.2	434.9	224.30	2.939		
11,200.0	7,051.0	11,062.1	7,055.0	115.4	115.0	90.26	588.8	3,856.7	659.2	429.4	229.84	2.868		
11,300.0	7,051.0	11,162.1	7,055.0	118.2	117.7	90.26	588.8	3,956.7	659.2	423.8	235.39	2.800		
11,400.0	7,051.0	11,262.1	7,055.0	120.9	120.5	90.26	588.8	4,056.7	659.2	418.2	240.94	2.736		
11,500.0	7,051.0	11,362.1	7,055.0	123.7	123.3	90.26	588.8	4,156.7	659.2	412.7	246.50	2.674		
11,600.0	7,051.0	11,462.1	7,055.0	126.5	126.1	90.26	588.8	4,256.7	659.2	407.1	252.05	2.615		
11,700.0	7,051.0	11,562.1	7,055.0	129.2	128.8	90.26	588.8	4,356.7	659.2	401.5	257.61	2.559		
11,800.0	7,051.0	11,662.1	7,055.0	132.0	131.6	90.26	588.9	4,456.7	659.1	396.0	263.18	2.505		
11,900.0	7,051.0	11,762.1	7,055.0	134.8	134.4	90.26	588.9	4,556.7	659.1	390.4	268.74	2.453		
12,000.0	7,051.0	11,862.1	7,055.0	137.6	137.2	90.26	588.9	4,656.7	659.1	384.8	274.31	2.403		
12,100.0	7,051.0	11,962.1	7,055.0	140.3	140.0	90.26	588.9	4,756.7	659.1	379.2	279.87	2.355		
12,200.0	7,051.0	12,062.1	7,055.0	143.1	142.8	90.26	588.9	4,856.7	659.1	373.7	285.44	2.309		
12,300.0	7,051.0	12,162.1	7,055.0	145.9	145.5	90.26	588.9	4,956.7	659.1	368.1	291.02	2.265		
12,400.0	7,051.0	12,262.1	7,055.0	148.7	148.3	90.26	588.9	5,056.7	659.1	362.5	296.59	2.222		
12,500.0	7,051.0	12,362.1	7,055.0	151.5	151.1	90.26	588.9	5,156.7	659.1	356.9	302.17	2.181		
12,525.9	7,051.0	12,388.0	7,055.0	152.2	151.8	90.26	588.9	5,182.5	659.1	355.5	303.61	2.171		
12,600.0	7,051.0	12,404.0	7,055.0	154.2	152.3	90.26	588.9	5,198.6	661.6	355.5	306.12	2.161 SF		
12,600.6	7,051.0	12,404.0	7,055.0	154.2	152.3	90.26	588.9	5,198.6	661.7	355.5	306.14	2.161		






<b>Company:</b>	Synergy Resources	<b>Local Co-ordinate Reference:</b>	Well SRC Kelly Farms 21-4-3NHZ #2
<b>Project:</b>	SEC.4-T5N-R66W	<b>TVD Reference:</b>	WELL @ 4766.0ft (Original Well Elev)
<b>Reference Site:</b>	SRC Kelly Farms Pad Sec.4-T5N-R66W	<b>MD Reference:</b>	WELL @ 4766.0ft (Original Well Elev)
<b>Site Error:</b>	0.0ft	<b>North Reference:</b>	True
<b>Reference Well:</b>	SRC Kelly Farms 21-4-3NHZ #2	<b>Survey Calculation Method:</b>	Minimum Curvature
<b>Well Error:</b>	0.0ft	<b>Output errors are at</b>	2.00 sigma
<b>Reference Wellbore</b>	Wellbore #1	<b>Database:</b>	Landmark
<b>Reference Design:</b>	Plan #1 (5-20-13)	<b>Offset TVD Reference:</b>	Offset Datum

Reference Depths are relative to WELL @ 4766.0ft (Original Well Elev) Coordinates are relative to: SRC Kelly Farms 21-4-3NHZ #2  
 Offset Depths are relative to Offset Datum Coordinate System is US State Plane 1983, Colorado Northern Zone  
 Central Meridian is -105.500000 ° Grid Convergence at Surface is: 0.46°



Reference Depths are relative to WELL @ 4766.0ft (Original Well Elev) Coordinates are relative to: SRC Kelly Farms 21-4-3NHZ #2  
Offset Depths are relative to Offset Datum Coordinate System is US State Plane 1983, Colorado Northern Zone  
Central Meridian is -105.500000 ° Grid Convergence at Surface is: 0.46°



Exist.), Wellbore #1, Wellbore #1 VD	 Northridge 21-4D (Exist.), Wellbore #1, Wellbore #1 VD	 SRC Kelly Farms A-4-3CHZ, Wellbore #1, Wellbore #1 VD
Exist.), Wellbore #1, Wellbore #1 VD	 SRC Kelly Farms A-4-3NHZ, Wellbore #1, Plan #1 (5-20-13) VD	 SRC Kelly Farms 22-4-3CHZ, Wellbore #1, Wellbore #1 VD
Exist.), Wellbore #1, Wellbore #1 VD	 SRC Kelly Farms 21-4-3NHZ, Wellbore #1, Plan #1 (5-20-13) VD	