



May 30, 2013

Director
Colorado Oil and Gas Conservation Commission
1120 Lincoln Street, Suite 801
Denver, CO 80203

Re: 30 Day Certification Letter – Rule 318 A(e)
Kelly Farms 21-4-3NHZ #2
Township 5 North, Range 66 West
Sections 3 & 4
Weld County, Colorado

Dear Director,

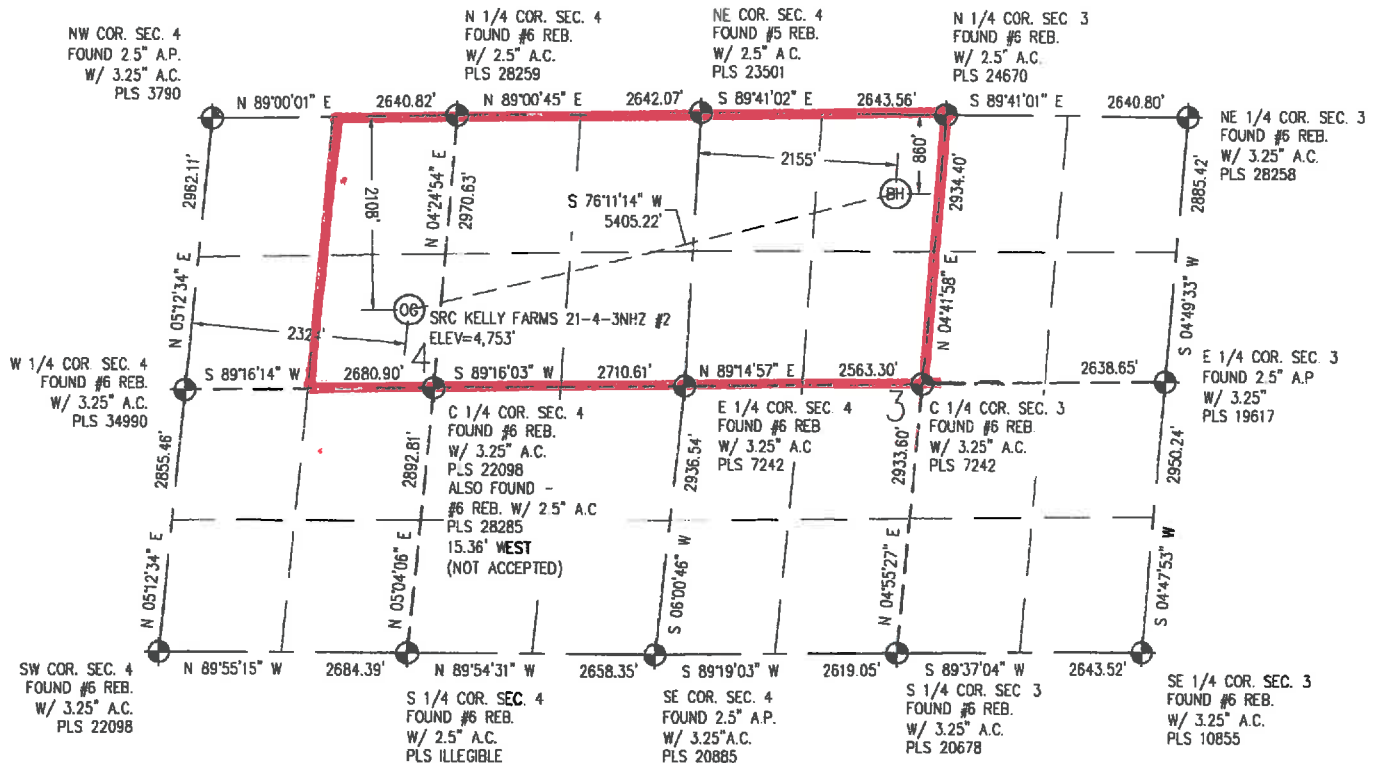
Synergy Resources Corporation (SRC) hereby certifies to the Director that SRC owns 100% interest in the proposed well bore spacing unit for the above said well. SRC hereby requests the Director to approve the Boundary well.

If you have any questions or issues regarding this permit, please contact Craig Rasmuson at (970) 737-1073.

Sincerely,

Craig Rasmuson

Craig Rasmuson
Synergy Resources Corporation

WELL LOCATION CERTIFICATE
THIS MAP DOES NOT REPRESENT A BOUNDARY SURVEY*Synergy Resources Proposed Spacing Unit - 400 Acres*

IN ACCORDANCE WITH A REQUEST FROM CRAIG RASMUSON - SYNERGY RESOURCES, BASELINE ENGINEERING CORP. HAS DETERMINED THE LOCATION OF THE SRC KELLY FARMS 21-4-3NHZ #2 TO BE 2,108' FNL AND 2,324' FWL, AS MEASURED AT NINETY (90) DEGREES FROM THE SECTION LINE OF SECTION 4, TOWNSHIP 5 NORTH, RANGE 66 WEST AND THE BOTTOM HOLE LOCATION TO BE 860' FNL AND 2,155' FWL OF SECTION 3, TOWNSHIP 5 NORTH, RANGE 66 WEST, 6TH PRINCIPAL MERIDIAN, WELD COUNTY, COLORADO.

I HEREBY CERTIFY THAT THIS WELL LOCATION CERTIFICATE WAS PREPARED BY ME, OR UNDER MY DIRECT SUPERVISION, THAT THE FIELD WORK WAS COMPLETED ON 2/22/2013, THAT IT IS NOT A LAND SURVEY PLAT OR AN IMPROVEMENT SURVEY PLAT, AND THAT IT IS NOT TO BE RELIED UPON FOR ESTABLISHMENT OF FENCE, BUILDING, OR OTHER FUTURE IMPROVEMENT LINES

0 2000
Scale 1" = 2000 ft

NOTES:

- 1) LAT/LONG SHOWN ARE BASED ON A GPS OBSERVATION (NAD83).
- 2) BEARINGS SHOWN ARE GRID BEARINGS OF THE COLORADO STATE PLANE COORDINATE SYSTEM, NORTH ZONE, NORTH AMERICAN DATUM 1983/2007.
- 3) GROUND ELEVATIONS ARE BASED ON A GPS OBSERVATION (NAVD 88 DATUM).
- 4) ALL DISTANCES SHOWN ARE FIELD MEASURED UNLESS OTHERWISE NOTED.
- 5) THE NEAREST EXISTING WELL IS: NORTHRIDGE 4-KD, 346' SOUTHEAST.
- 6) IMPROVEMENTS: SEE LOCATION DRAWING EXHIBIT FOR ALL VISIBLE IMPROVEMENTS WITHIN 600' OF WELL HEAD.
- 7) SURFACE USE: NATURAL GROUND.

SURFACE HOLE:

LATITUDE: 40.431584° N
LONGITUDE: 104.784755° W
PDOP: 1.4
1/4, 1/4: SE1/4NW1/4
NEAREST PROPERTY LINE: 238' S

BOTTOM HOLE:

LATITUDE: 40.435008° N
LONGITUDE: 104.765870° W

LEGEND

- - FOUND/SET SURVEY MONUMENT PER MONUMENT RECORD EXCEPTIONS NOTED
- - CALCULATED SURVEY MONUMENT POSITION
- (C) - CALCULATED DIMENSION

NOTICE: According to Colorado law you MUST commence any legal action based upon any defect in this W.L.C. within three years after you first discover such defect. In no event may any action based upon any defect in this W.L.C. be commenced more than ten years from this said date of the certification show herein.



AARON A. DEMKO

Professional Land Surveyor Registration No. 38285
State of Colorado
FOR AND ON BEHALF OF BASELINE ENGINEERING CORP.

Completed
5/16/2013

JOB #SYNS66W04-02