

Synergy Resources

Well Name: **SRC Kelly Farms 21-4-3NHZ**

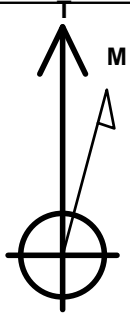
Surface Location: SRC Kelly Farms Pad Sec.4-T5N-R66W
North American Datum 1983 , US State Plane 1983 , Colorado Northern Zone

Ground Elevation: 4752.0

+N/-S	+E/-W	Northing	Easting	Latitude	Longitude	Slot
0.0	0.0	1400943.90	3199133.46	40.431788	-104.784662	
Original Well Elev WELL @ 4765.0ft (Original Well Elev)						

WELLBORE TARGET DETAILS

Name	TVD	+N/-S	+E/-W	Shape
SHL 2034'FNL & 2342'FWL, Sec. 4	1.0	0.0	0.0	Point
BHL 530'FNL & 2165'FWL, Sec. 3	7051.0	1503.0	5261.8	Point



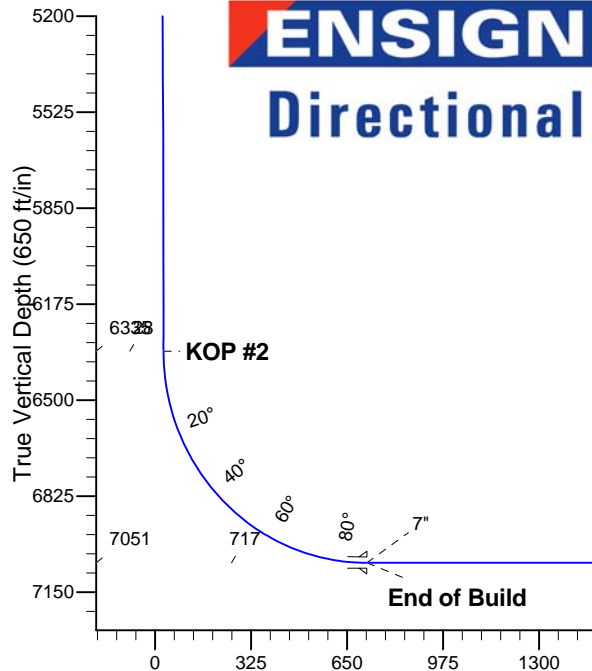
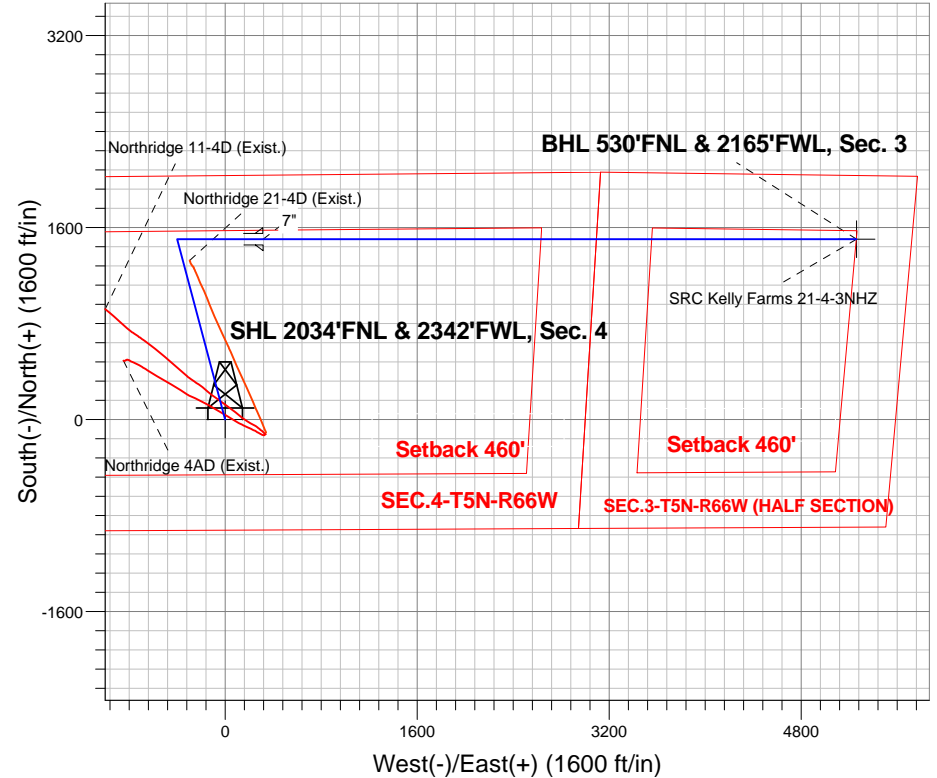
Azimuths to True North
Magnetic North: 8.62°

Magnetic Field
Strength: 52943.2srT
Dip Angle: 67.01°
Date: 5/20/2013
Model: IGRF2010

SRC Kelly Farms Pad Sec.4-T5N-R66W
SRC Kelly Farms 21-4-3NHZ
Plan #1 (5-20-13)
14:26, May 29 2013

ANNOTATIONS

TVD	MD	Annotation
200.0	200.0	KOP
6334.8	6552.2	KOP #2
7051.0	7677.2	End of Build



SECTION DETAILS

Sec	MD	Inc	Azi	TVD	+N/-S	+E/-W	DLeg	TFace	VSec	Target
1	0.0	0.00	0.00	0.0	0.0	0.0	0.00	0.00	0.0	
2	200.0	0.00	0.00	200.0	0.0	0.0	0.00	0.00	0.0	
3	1039.6	16.79	345.10	1027.6	118.0	-31.4	2.00	345.10	2.2	
4	5577.9	16.79	345.10	5372.4	1385.0	-368.6	0.00	0.00	26.0	
5	6417.4	0.00	0.00	6200.0	1503.0	-400.0	2.00	180.00	28.2	
6	6552.2	0.00	0.00	6334.8	1503.0	-400.0	0.00	0.00	28.2	
7	7677.2	90.00	90.00	7051.0	1503.0	316.2	8.00	90.00	716.8	
8	12622.9	90.00	90.00	7051.0	1503.0	5261.8	0.00	0.00	5472.3	BHL 530'FNL & 2165'FWL, Sec. 3

BHL 530'FNL & 2165'FWL, Sec. 3

Vertical Section at 74.06° (650 ft/in)



Synergy Resources

SEC.4-T5N-R66W

SRC Kelly Farms Pad Sec.4-T5N-R66W

SRC Kelly Farms 21-4-3NHZ

Wellbore #1

Plan: Plan #1 (5-20-13)

Standard Planning Report

29 May, 2013

Plan Sections										
Measured Depth (ft)	Inclination (°)	Azimuth (°)	Vertical Depth (ft)	+N/-S (ft)	+E/-W (ft)	Dogleg Rate (°/100ft)	Build Rate (°/100ft)	Turn Rate (°/100ft)	TFO (°)	Target
0.0	0.00	0.00	0.0	0.0	0.0	0.00	0.00	0.00	0.00	
200.0	0.00	0.00	200.0	0.0	0.0	0.00	0.00	0.00	0.00	
1,039.6	16.79	345.10	1,027.6	118.0	-31.4	2.00	2.00	0.00	345.10	
5,577.9	16.79	345.10	5,372.4	1,385.0	-368.6	0.00	0.00	0.00	0.00	
6,417.4	0.00	0.00	6,200.0	1,503.0	-400.0	2.00	-2.00	0.00	180.00	
6,552.2	0.00	0.00	6,334.8	1,503.0	-400.0	0.00	0.00	0.00	0.00	
7,677.2	90.00	90.00	7,051.0	1,503.0	316.2	8.00	8.00	0.00	90.00	
12,622.9	90.00	90.00	7,051.0	1,503.0	5,261.8	0.00	0.00	0.00	0.00	BHL 530'FNL & 216

Database:	Landmark	Local Co-ordinate Reference:	Well SRC Kelly Farms 21-4-3NHZ
Company:	Synergy Resources	TVD Reference:	WELL @ 4765.0ft (Original Well Elev)
Project:	SEC.4-T5N-R66W	MD Reference:	WELL @ 4765.0ft (Original Well Elev)
Site:	SRC Kelly Farms Pad Sec.4-T5N-R66W	North Reference:	True
Well:	SRC Kelly Farms 21-4-3NHZ	Survey Calculation Method:	Minimum Curvature
Wellbore:	Wellbore #1		
Design:	Plan #1 (5-20-13)		

Planned Survey									
Measured Depth (ft)	Inclination (°)	Azimuth (°)	Vertical Depth (ft)	+N/-S (ft)	+E/-W (ft)	Vertical Section (ft)	Dogleg Rate (°/100ft)	Build Rate (°/100ft)	Turn Rate (°/100ft)
0.0	0.00	0.00	0.0	0.0	0.0	0.0	0.00	0.00	0.00
1.0	0.00	0.00	1.0	0.0	0.0	0.0	0.00	0.00	0.00
SHL 2034'FNL & 2342'FWL, Sec. 4									
100.0	0.00	0.00	100.0	0.0	0.0	0.0	0.00	0.00	0.00
200.0	0.00	0.00	200.0	0.0	0.0	0.0	0.00	0.00	0.00
KOP									
300.0	2.00	345.10	300.0	1.7	-0.4	0.0	2.00	2.00	0.00
400.0	4.00	345.10	399.8	6.7	-1.8	0.1	2.00	2.00	0.00
500.0	6.00	345.10	499.5	15.2	-4.0	0.3	2.00	2.00	0.00
600.0	8.00	345.10	598.7	26.9	-7.2	0.5	2.00	2.00	0.00
700.0	10.00	345.10	697.5	42.1	-11.2	0.8	2.00	2.00	0.00
800.0	12.00	345.10	795.6	60.5	-16.1	1.1	2.00	2.00	0.00
900.0	14.00	345.10	893.1	82.2	-21.9	1.5	2.00	2.00	0.00
1,000.0	16.00	345.10	989.6	107.2	-28.5	2.0	2.00	2.00	0.00
1,039.6	16.79	345.10	1,027.6	118.0	-31.4	2.2	2.00	2.00	0.00
1,100.0	16.79	345.10	1,085.5	134.9	-35.9	2.5	0.00	0.00	0.00
1,200.0	16.79	345.10	1,181.2	162.8	-43.3	3.1	0.00	0.00	0.00
1,300.0	16.79	345.10	1,276.9	190.7	-50.8	3.6	0.00	0.00	0.00
1,400.0	16.79	345.10	1,372.7	218.7	-58.2	4.1	0.00	0.00	0.00
1,500.0	16.79	345.10	1,468.4	246.6	-65.6	4.6	0.00	0.00	0.00
1,600.0	16.79	345.10	1,564.1	274.5	-73.1	5.1	0.00	0.00	0.00
1,700.0	16.79	345.10	1,659.9	302.4	-80.5	5.7	0.00	0.00	0.00
1,800.0	16.79	345.10	1,755.6	330.3	-87.9	6.2	0.00	0.00	0.00
1,900.0	16.79	345.10	1,851.3	358.2	-95.3	6.7	0.00	0.00	0.00
2,000.0	16.79	345.10	1,947.1	386.2	-102.8	7.2	0.00	0.00	0.00
2,100.0	16.79	345.10	2,042.8	414.1	-110.2	7.8	0.00	0.00	0.00
2,200.0	16.79	345.10	2,138.6	442.0	-117.6	8.3	0.00	0.00	0.00
2,300.0	16.79	345.10	2,234.3	469.9	-125.1	8.8	0.00	0.00	0.00
2,400.0	16.79	345.10	2,330.0	497.8	-132.5	9.3	0.00	0.00	0.00
2,500.0	16.79	345.10	2,425.8	525.7	-139.9	9.9	0.00	0.00	0.00
2,600.0	16.79	345.10	2,521.5	553.7	-147.3	10.4	0.00	0.00	0.00
2,700.0	16.79	345.10	2,617.2	581.6	-154.8	10.9	0.00	0.00	0.00
2,800.0	16.79	345.10	2,713.0	609.5	-162.2	11.4	0.00	0.00	0.00
2,900.0	16.79	345.10	2,808.7	637.4	-169.6	12.0	0.00	0.00	0.00
3,000.0	16.79	345.10	2,904.5	665.3	-177.1	12.5	0.00	0.00	0.00
3,100.0	16.79	345.10	3,000.2	693.2	-184.5	13.0	0.00	0.00	0.00
3,200.0	16.79	345.10	3,095.9	721.2	-191.9	13.5	0.00	0.00	0.00
3,300.0	16.79	345.10	3,191.7	749.1	-199.4	14.1	0.00	0.00	0.00
3,400.0	16.79	345.10	3,287.4	777.0	-206.8	14.6	0.00	0.00	0.00
3,500.0	16.79	345.10	3,383.1	804.9	-214.2	15.1	0.00	0.00	0.00
3,600.0	16.79	345.10	3,478.9	832.8	-221.6	15.6	0.00	0.00	0.00
3,700.0	16.79	345.10	3,574.6	860.7	-229.1	16.1	0.00	0.00	0.00
3,800.0	16.79	345.10	3,670.3	888.7	-236.5	16.7	0.00	0.00	0.00
3,900.0	16.79	345.10	3,766.1	916.6	-243.9	17.2	0.00	0.00	0.00
4,000.0	16.79	345.10	3,861.8	944.5	-251.4	17.7	0.00	0.00	0.00
4,100.0	16.79	345.10	3,957.6	972.4	-258.8	18.2	0.00	0.00	0.00
4,200.0	16.79	345.10	4,053.3	1,000.3	-266.2	18.8	0.00	0.00	0.00
4,300.0	16.79	345.10	4,149.0	1,028.2	-273.6	19.3	0.00	0.00	0.00
4,400.0	16.79	345.10	4,244.8	1,056.1	-281.1	19.8	0.00	0.00	0.00
4,500.0	16.79	345.10	4,340.5	1,084.1	-288.5	20.3	0.00	0.00	0.00
4,600.0	16.79	345.10	4,436.2	1,112.0	-295.9	20.9	0.00	0.00	0.00
4,700.0	16.79	345.10	4,532.0	1,139.9	-303.4	21.4	0.00	0.00	0.00
4,800.0	16.79	345.10	4,627.7	1,167.8	-310.8	21.9	0.00	0.00	0.00
4,900.0	16.79	345.10	4,723.4	1,195.7	-318.2	22.4	0.00	0.00	0.00

Database:	Landmark	Local Co-ordinate Reference:	Well SRC Kelly Farms 21-4-3NHZ
Company:	Synergy Resources	TVD Reference:	WELL @ 4765.0ft (Original Well Elev)
Project:	SEC.4-T5N-R66W	MD Reference:	WELL @ 4765.0ft (Original Well Elev)
Site:	SRC Kelly Farms Pad Sec.4-T5N-R66W	North Reference:	True
Well:	SRC Kelly Farms 21-4-3NHZ	Survey Calculation Method:	Minimum Curvature
Wellbore:	Wellbore #1		
Design:	Plan #1 (5-20-13)		

Planned Survey									
Measured Depth (ft)	Inclination (°)	Azimuth (°)	Vertical Depth (ft)	+N/-S (ft)	+E/-W (ft)	Vertical Section (ft)	Dogleg Rate (°/100ft)	Build Rate (°/100ft)	Turn Rate (°/100ft)
5,000.0	16.79	345.10	4,819.2	1,223.6	-325.7	23.0	0.00	0.00	0.00
5,100.0	16.79	345.10	4,914.9	1,251.6	-333.1	23.5	0.00	0.00	0.00
5,200.0	16.79	345.10	5,010.7	1,279.5	-340.5	24.0	0.00	0.00	0.00
5,300.0	16.79	345.10	5,106.4	1,307.4	-347.9	24.5	0.00	0.00	0.00
5,400.0	16.79	345.10	5,202.1	1,335.3	-355.4	25.0	0.00	0.00	0.00
5,500.0	16.79	345.10	5,297.9	1,363.2	-362.8	25.6	0.00	0.00	0.00
5,577.9	16.79	345.10	5,372.4	1,385.0	-368.6	26.0	0.00	0.00	0.00
5,600.0	16.35	345.10	5,393.6	1,391.1	-370.2	26.1	2.00	-2.00	0.00
5,700.0	14.35	345.10	5,490.1	1,416.6	-377.0	26.6	2.00	-2.00	0.00
5,800.0	12.35	345.10	5,587.3	1,439.0	-383.0	27.0	2.00	-2.00	0.00
5,900.0	10.35	345.10	5,685.4	1,458.0	-388.0	27.3	2.00	-2.00	0.00
6,000.0	8.35	345.10	5,784.1	1,473.7	-392.2	27.6	2.00	-2.00	0.00
6,100.0	6.35	345.10	5,883.2	1,486.0	-395.5	27.9	2.00	-2.00	0.00
6,200.0	4.35	345.10	5,982.8	1,495.0	-397.9	28.0	2.00	-2.00	0.00
6,300.0	2.35	345.10	6,082.6	1,500.7	-399.4	28.1	2.00	-2.00	0.00
6,400.0	0.35	345.10	6,182.6	1,502.9	-400.0	28.2	2.00	-2.00	0.00
6,417.4	0.00	0.00	6,200.0	1,503.0	-400.0	28.2	2.00	-2.00	0.00
6,500.0	0.00	0.00	6,282.6	1,503.0	-400.0	28.2	0.00	0.00	0.00
6,552.2	0.00	0.00	6,334.8	1,503.0	-400.0	28.2	0.00	0.00	0.00
KOP #2									
6,600.0	3.82	90.00	6,382.5	1,503.0	-398.4	29.7	8.00	8.00	0.00
6,700.0	11.82	90.00	6,481.5	1,503.0	-384.8	42.8	8.00	8.00	0.00
6,800.0	19.82	90.00	6,577.7	1,503.0	-357.6	69.0	8.00	8.00	0.00
6,900.0	27.82	90.00	6,669.1	1,503.0	-317.2	107.8	8.00	8.00	0.00
7,000.0	35.82	90.00	6,754.0	1,503.0	-264.5	158.5	8.00	8.00	0.00
7,100.0	43.82	90.00	6,830.7	1,503.0	-200.5	220.0	8.00	8.00	0.00
7,200.0	51.82	90.00	6,897.8	1,503.0	-126.5	291.2	8.00	8.00	0.00
7,300.0	59.82	90.00	6,953.9	1,503.0	-43.8	370.7	8.00	8.00	0.00
7,400.0	67.82	90.00	6,998.0	1,503.0	45.8	456.9	8.00	8.00	0.00
7,500.0	75.82	90.00	7,029.2	1,503.0	140.8	548.2	8.00	8.00	0.00
7,600.0	83.82	90.00	7,046.8	1,503.0	239.1	642.7	8.00	8.00	0.00
7,677.2	90.00	90.00	7,051.0	1,503.0	316.2	716.8	8.00	8.00	0.00
End of Build - 7"									
7,700.0	90.00	90.00	7,051.0	1,503.0	339.0	738.7	0.01	0.01	0.00
7,800.0	90.00	90.00	7,051.0	1,503.0	439.0	834.9	0.00	0.00	0.00
7,900.0	90.00	90.00	7,051.0	1,503.0	539.0	931.1	0.00	0.00	0.00
8,000.0	90.00	90.00	7,051.0	1,503.0	639.0	1,027.2	0.00	0.00	0.00
8,100.0	90.00	90.00	7,051.0	1,503.0	739.0	1,123.4	0.00	0.00	0.00
8,200.0	90.00	90.00	7,051.0	1,503.0	839.0	1,219.5	0.00	0.00	0.00
8,300.0	90.00	90.00	7,051.0	1,503.0	939.0	1,315.7	0.00	0.00	0.00
8,400.0	90.00	90.00	7,051.0	1,503.0	1,039.0	1,411.8	0.00	0.00	0.00
8,500.0	90.00	90.00	7,051.0	1,503.0	1,139.0	1,508.0	0.00	0.00	0.00
8,600.0	90.00	90.00	7,051.0	1,503.0	1,239.0	1,604.1	0.00	0.00	0.00
8,700.0	90.00	90.00	7,051.0	1,503.0	1,339.0	1,700.3	0.00	0.00	0.00
8,800.0	90.00	90.00	7,051.0	1,503.0	1,439.0	1,796.4	0.00	0.00	0.00
8,900.0	90.00	90.00	7,051.0	1,503.0	1,539.0	1,892.6	0.00	0.00	0.00
9,000.0	90.00	90.00	7,051.0	1,503.0	1,639.0	1,988.8	0.00	0.00	0.00
9,100.0	90.00	90.00	7,051.0	1,503.0	1,739.0	2,084.9	0.00	0.00	0.00
9,200.0	90.00	90.00	7,051.0	1,503.0	1,839.0	2,181.1	0.00	0.00	0.00
9,300.0	90.00	90.00	7,051.0	1,503.0	1,939.0	2,277.2	0.00	0.00	0.00
9,400.0	90.00	90.00	7,051.0	1,503.0	2,039.0	2,373.4	0.00	0.00	0.00
9,500.0	90.00	90.00	7,051.0	1,503.0	2,139.0	2,469.5	0.00	0.00	0.00
9,600.0	90.00	90.00	7,051.0	1,503.0	2,239.0	2,565.7	0.00	0.00	0.00
9,700.0	90.00	90.00	7,051.0	1,503.0	2,339.0	2,661.8	0.00	0.00	0.00

Casing Points					
Measured Depth (ft)	Vertical Depth (ft)		Name	Casing Diameter (")	Hole Diameter (")
7,677.2	7,051.0	7"		7	7-1/2

Database:	Landmark	Local Co-ordinate Reference:	Well SRC Kelly Farms 21-4-3NHZ
Company:	Synergy Resources	TVD Reference:	WELL @ 4765.0ft (Original Well Elev)
Project:	SEC.4-T5N-R66W	MD Reference:	WELL @ 4765.0ft (Original Well Elev)
Site:	SRC Kelly Farms Pad Sec.4-T5N-R66W	North Reference:	True
Well:	SRC Kelly Farms 21-4-3NHZ	Survey Calculation Method:	Minimum Curvature
Wellbore:	Wellbore #1		
Design:	Plan #1 (5-20-13)		

Plan Annotations				
Measured Depth (ft)	Vertical Depth (ft)	Local Coordinates		Comment
		+N/-S (ft)	+E/-W (ft)	
200.0	200.0	0.0	0.0	KOP
6,552.2	6,334.8	1,503.0	-400.0	KOP #2
7,677.2	7,051.0	1,503.0	316.2	End of Build



Synergy Resources

SEC.4-T5N-R66W

SRC Kelly Farms Pad Sec.4-T5N-R66W

SRC Kelly Farms 21-4-3NHZ

Wellbore #1

Plan #1 (5-20-13)

Anticollision Report

29 May, 2013

Northridge Pad Sec.4-T5N-R66W - Northridge 11-4D (Exist.) - Wellbore #1 - Wellbore #1													Offset Site Error:	0.0 ft
Survey Program: 147-MWD													Offset Well Error:	0.0 ft
Reference		Offset		Semi Major Axis			Distance							
Measured Depth	Vertical Depth	Measured Depth	Vertical Depth	Reference	Offset	Highside Toolface	Offset Wellbore Centre		Between Centres	Between Ellipses	Minimum Separation	Separation Factor	Warning	
(ft)	(ft)	(ft)	(ft)	(ft)	(ft)	(°)	+N/-S (ft)	+E/-W (ft)	(ft)	(ft)	(ft)			
1,500.0	1,468.4	1,607.0	1,561.3	5.7	6.8	157.89	60.7	84.4	260.9	252.7	8.23	31.687		
1,600.0	1,564.1	1,708.2	1,653.1	6.3	7.6	162.97	86.9	50.8	246.4	237.4	9.04	27.269		
1,700.0	1,659.9	1,802.6	1,738.4	6.9	8.4	168.38	111.5	18.6	233.4	223.4	9.94	23.485		
1,800.0	1,755.6	1,900.0	1,826.3	7.5	9.2	174.97	135.3	-15.8	223.8	212.7	11.08	20.201		
1,900.0	1,851.3	1,999.8	1,915.9	8.0	10.1	-177.78	161.0	-51.5	216.0	203.5	12.52	17.256		
2,000.0	1,947.1	2,092.6	1,999.1	8.6	10.9	-170.83	185.6	-84.3	211.3	197.2	14.10	14.986		
2,100.0	2,042.8	2,193.1	2,089.2	9.2	11.8	-162.99	211.8	-120.2	210.8	194.7	16.07	13.118		
2,200.0	2,138.6	2,299.2	2,183.3	9.8	12.8	-154.76	243.3	-157.6	210.5	192.1	18.34	11.477		
2,211.5	2,149.6	2,309.2	2,192.2	9.9	12.9	-154.02	246.5	-161.0	210.4	191.9	18.56	11.338	CC, ES	
2,300.0	2,234.3	2,384.8	2,259.8	10.4	13.5	-148.50	268.8	-186.8	213.7	193.4	20.24	10.557		
2,400.0	2,330.0	2,471.9	2,338.3	11.0	14.3	-142.56	290.8	-217.2	224.6	202.5	22.13	10.147		
2,500.0	2,425.8	2,568.8	2,425.7	11.5	15.1	-136.53	313.6	-252.2	240.3	216.2	24.13	9.960		
2,600.0	2,521.5	2,668.1	2,514.8	12.1	16.0	-130.86	338.6	-288.4	257.2	231.1	26.06	9.871		
2,700.0	2,617.2	2,774.2	2,609.0	12.7	17.0	-125.17	368.7	-326.8	273.7	245.7	27.99	9.777		
2,800.0	2,713.0	2,873.5	2,694.7	13.3	18.1	-119.45	401.9	-364.4	289.8	260.0	29.85	9.710	SF	
2,900.0	2,808.7	2,966.3	2,774.3	13.9	19.0	-114.48	433.8	-400.0	308.3	276.8	31.44	9.805		
3,000.0	2,904.5	3,061.6	2,858.2	14.5	19.9	-110.79	462.8	-434.2	329.1	296.3	32.83	10.024		
3,100.0	3,000.2	3,163.1	2,948.5	15.1	20.8	-107.59	493.3	-469.0	349.9	315.8	34.18	10.237		
3,200.0	3,095.9	3,257.9	3,033.0	15.6	21.7	-104.93	522.1	-501.2	371.3	335.9	35.43	10.480		
3,300.0	3,191.7	3,353.2	3,119.2	16.2	22.5	-103.02	548.2	-532.4	393.7	357.1	36.61	10.753		
3,400.0	3,287.4	3,449.9	3,208.3	16.8	23.2	-101.94	570.8	-562.2	416.4	378.6	37.78	11.021		
3,500.0	3,383.1	3,546.7	3,296.9	17.4	24.0	-100.76	594.6	-593.1	439.7	400.7	38.95	11.289		
3,600.0	3,478.9	3,648.5	3,390.1	18.0	24.8	-99.56	620.6	-624.8	462.0	421.9	40.13	11.512		
3,700.0	3,574.6	3,748.4	3,482.8	18.6	25.5	-98.96	643.1	-654.4	484.4	443.1	41.29	11.731		
3,800.0	3,670.3	3,845.5	3,573.8	19.2	26.2	-98.69	663.3	-681.3	505.7	463.3	42.43	11.919		
3,900.0	3,766.1	3,930.1	3,653.1	19.7	26.8	-98.53	679.9	-705.8	528.7	485.2	43.52	12.148		
4,000.0	3,861.8	4,013.4	3,729.0	20.3	27.5	-97.83	699.7	-733.8	554.3	509.7	44.59	12.430		
4,100.0	3,957.6	4,100.4	3,807.4	20.9	28.3	-97.01	720.9	-765.0	581.9	536.2	45.72	12.727		
4,200.0	4,053.3	4,195.4	3,891.4	21.5	29.2	-95.86	746.6	-801.1	610.7	563.8	46.90	13.022		
4,300.0	4,149.0	4,310.1	3,990.8	22.1	30.3	-94.01	784.1	-844.3	637.7	589.5	48.17	13.239		
4,400.0	4,244.8	4,420.2	4,087.3	22.7	31.4	-92.51	820.0	-883.2	663.0	613.6	49.36	13.432		
4,500.0	4,340.5	4,532.3	4,189.1	23.3	32.3	-91.72	851.2	-918.5	686.0	635.4	50.59	13.561		
4,600.0	4,436.2	4,623.7	4,272.6	23.8	33.1	-91.20	875.9	-946.3	708.3	656.6	51.69	13.701		
4,700.0	4,532.0	4,713.4	4,354.2	24.4	33.8	-90.71	900.0	-974.6	731.8	679.0	52.80	13.862		
4,800.0	4,627.7	4,804.0	4,436.3	25.0	34.6	-90.22	924.3	-1,004.0	756.3	702.4	53.90	14.031		
4,900.0	4,723.4	4,903.2	4,526.3	25.6	35.4	-89.73	950.6	-1,036.6	781.3	726.2	55.07	14.186		
5,000.0	4,819.2	4,988.5	4,602.9	26.2	36.2	-89.18	975.1	-1,065.0	806.3	750.1	56.14	14.362		
5,100.0	4,914.9	5,070.1	4,675.8	26.8	36.9	-88.71	997.7	-1,093.6	833.3	776.1	57.20	14.567		
5,200.0	5,010.7	5,158.0	4,753.5	27.4	37.8	-88.12	1,023.2	-1,125.9	861.7	803.4	58.30	14.782		
5,300.0	5,106.4	5,249.6	4,833.8	28.0	38.7	-87.43	1,051.2	-1,160.2	890.7	831.3	59.39	14.997		
5,400.0	5,202.1	5,336.8	4,910.4	28.5	39.6	-86.90	1,076.4	-1,193.1	920.3	859.9	60.48	15.218		
5,500.0	5,297.9	5,420.1	4,984.0	29.1	40.4	-86.52	1,098.8	-1,225.2	951.2	889.7	61.55	15.455		
5,600.0	5,393.6	5,508.9	5,062.5	29.7	41.2	-86.33	1,121.7	-1,259.9	982.9	920.2	62.69	15.679		

Northridge Pad Sec.4-T5N-R66W - Northridge 21-4D (Exist.) - Wellbore #1 - Wellbore #1													Offset Site Error:	0.0 ft
Survey Program: 150-MWD													Offset Well Error:	0.0 ft
Reference		Offset		Semi Major Axis			Distance							Warning
Measured Depth	Vertical Depth	Measured Depth	Vertical Depth	Reference	Offset	Highside Toolface	Offset Wellbore Centre		Between Centres	Between Ellipses	Minimum Separation	Separation Factor		
(ft)	(ft)	(ft)	(ft)	(ft)	(ft)	(°)	+N/-S (ft)	+E/-W (ft)	(ft)	(ft)	(ft)			
0.0	0.0	0.0	0.0	0.0	0.0	107.94	-110.0	339.9	357.5					
100.0	100.0	87.4	87.4	0.1	0.1	107.89	-109.8	340.1	357.4	357.1	0.21	1,694.533		
200.0	200.0	190.4	190.3	0.3	0.3	107.68	-108.6	340.5	357.4	356.8	0.60	599.007		
300.0	300.0	301.7	301.6	0.6	0.5	122.21	-104.0	339.5	356.3	355.2	1.08	330.880		
400.0	399.8	411.4	410.9	0.8	0.8	121.91	-95.6	336.0	353.7	352.1	1.57	224.875		
500.0	499.5	518.3	517.1	1.0	1.1	121.83	-84.9	330.9	350.8	348.7	2.09	167.508		
600.0	598.7	625.2	622.9	1.3	1.4	121.74	-70.5	324.6	347.6	345.0	2.67	130.082		
700.0	697.5	725.1	721.4	1.7	1.8	121.86	-55.3	318.3	345.4	342.2	3.28	105.244		
800.0	795.6	829.5	824.2	2.0	2.2	122.36	-38.6	311.6	344.8	340.8	3.95	87.239		
900.0	893.1	938.9	931.3	2.5	2.6	122.97	-17.8	303.1	343.8	339.0	4.71	72.925		
1,000.0	989.6	1,047.7	1,036.7	2.9	3.2	123.50	7.3	293.0	341.9	336.3	5.57	61.429		
1,100.0	1,085.5	1,160.6	1,144.9	3.5	3.8	124.04	36.8	279.9	338.3	331.8	6.52	51.903		
1,200.0	1,181.2	1,265.2	1,243.8	4.0	4.4	124.10	67.6	266.1	332.3	324.8	7.51	44.253		
1,300.0	1,276.9	1,364.6	1,337.2	4.6	5.1	123.73	99.2	253.3	325.7	317.2	8.52	38.241		
1,400.0	1,372.7	1,464.2	1,431.0	5.2	5.6	123.45	130.2	240.5	319.4	309.9	9.51	33.595		
1,500.0	1,468.4	1,564.2	1,525.4	5.7	6.2	123.35	160.5	227.1	312.8	302.3	10.48	29.855		
1,600.0	1,564.1	1,662.6	1,618.5	6.3	6.8	123.44	189.3	213.9	306.6	295.1	11.42	26.834		
1,700.0	1,659.9	1,760.2	1,711.2	6.9	7.3	123.62	217.3	201.0	300.8	288.5	12.36	24.343		
1,800.0	1,755.6	1,857.4	1,803.8	7.5	7.8	123.97	244.2	188.8	296.0	282.8	13.27	22.308		
1,900.0	1,851.3	1,954.9	1,896.9	8.0	8.4	124.42	270.4	177.2	292.1	277.9	14.16	20.621		
2,000.0	1,947.1	2,054.2	1,992.0	8.6	8.9	125.01	296.4	165.7	288.7	273.7	15.04	19.199		
2,100.0	2,042.8	2,157.9	2,091.4	9.2	9.5	125.71	323.5	153.1	285.0	269.0	15.92	17.903		
2,200.0	2,138.6	2,255.9	2,185.1	9.8	10.0	126.36	349.4	140.6	280.5	263.7	16.76	16.733		
2,300.0	2,234.3	2,351.9	2,277.2	10.4	10.6	127.15	373.8	129.2	277.3	259.7	17.56	15.791		
2,400.0	2,330.0	2,453.5	2,374.7	11.0	11.1	127.85	400.0	117.8	274.6	256.3	18.39	14.936		
2,500.0	2,425.8	2,557.5	2,473.9	11.5	11.7	128.30	428.6	105.7	270.9	251.6	19.28	14.046		
2,600.0	2,521.5	2,659.5	2,571.0	12.1	12.3	128.72	457.2	92.8	266.1	245.9	20.17	13.190		
2,700.0	2,617.2	2,764.2	2,669.9	12.7	13.0	128.80	488.5	78.9	259.7	238.5	21.15	12.280		
2,800.0	2,713.0	2,862.8	2,762.5	13.3	13.6	128.59	519.5	65.4	252.4	230.2	22.17	11.387		
2,900.0	2,808.7	2,959.3	2,854.0	13.9	14.2	128.77	547.8	53.0	246.7	223.7	23.08	10.692		
3,000.0	2,904.5	3,061.2	2,950.6	14.5	14.8	129.07	577.3	39.6	241.0	217.0	23.98	10.047		
3,100.0	3,000.2	3,160.1	3,044.0	15.1	15.4	129.12	607.1	26.5	234.6	209.7	24.93	9.412		
3,200.0	3,095.9	3,255.4	3,134.8	15.6	16.0	129.70	633.4	14.2	229.7	204.0	25.71	8.934		
3,300.0	3,191.7	3,354.2	3,229.4	16.2	16.5	130.48	659.5	2.7	226.5	200.1	26.43	8.569		
3,400.0	3,287.4	3,451.8	3,322.8	16.8	17.1	131.33	685.1	-8.9	223.3	196.2	27.11	8.237		
3,500.0	3,383.1	3,549.9	3,417.4	17.4	17.6	132.66	708.6	-19.8	221.8	194.2	27.62	8.029		
3,600.0	3,478.9	3,648.8	3,512.9	18.0	18.1	134.26	731.4	-31.1	220.7	192.6	28.02	7.875		
3,700.0	3,574.6	3,747.9	3,608.8	18.6	18.6	135.87	754.1	-42.0	220.2	191.8	28.39	7.756		
3,800.0	3,670.3	3,857.7	3,714.2	19.2	19.2	137.08	782.0	-54.5	218.2	189.3	28.92	7.544		
3,900.0	3,766.1	3,963.7	3,814.5	19.7	19.8	137.62	813.2	-69.0	212.0	182.3	29.67	7.145		
4,000.0	3,861.8	4,065.2	3,909.7	20.3	20.5	137.72	845.4	-83.6	203.8	173.3	30.55	6.672		
4,100.0	3,957.6	4,161.4	3,999.8	20.9	21.1	137.59	876.4	-96.8	196.0	164.5	31.47	6.227		
4,200.0	4,053.3	4,254.9	4,088.4	21.5	21.7	137.92	903.8	-108.0	191.3	159.0	32.22	5.937		
4,300.0	4,149.0	4,355.4	4,184.2	22.1	22.3	138.38	932.3	-119.1	187.9	155.0	32.92	5.708		
4,400.0	4,244.8	4,458.0	4,281.4	22.7	22.9	138.52	963.1	-130.8	183.4	149.6	33.77	5.430		
4,500.0	4,340.5	4,559.4	4,377.2	23.3	23.5	138.71	993.7	-143.2	177.9	143.3	34.59	5.144		
4,600.0	4,436.2	4,662.0	4,473.8	23.8	24.2	138.86	1,025.6	-156.7	171.2	135.8	35.44	4.831		
4,700.0	4,532.0	4,762.8	4,567.9	24.4	24.9	138.36	1,059.1	-170.1	163.0	126.5	36.54	4.462		
4,800.0	4,627.7	4,861.3	4,660.5	25.0	25.5	138.91	1,089.4	-184.8	155.1	117.9	37.19	4.169		
4,900.0	4,723.4	4,959.0	4,752.6	25.6	26.1	139.42	1,119.1	-198.3	148.2	110.3	37.84	3.916		
5,000.0	4,819.2	5,058.6	4,846.8	26.2	26.8	140.03	1,148.8	-211.3	142.3	103.9	38.44	3.702		
5,100.0	4,914.9	5,154.7	4,938.0	26.8	27.3	140.83	1,176.6	-223.4	137.4	98.4	38.93	3.529		

Company:	Synergy Resources	Local Co-ordinate Reference:	Well SRC Kelly Farms 21-4-3NHZ
Project:	SEC.4-T5N-R66W	TVD Reference:	WELL @ 4765.0ft (Original Well Elev)
Reference Site:	SRC Kelly Farms Pad Sec.4-T5N-R66W	MD Reference:	WELL @ 4765.0ft (Original Well Elev)
Site Error:	0.0ft	North Reference:	True
Reference Well:	SRC Kelly Farms 21-4-3NHZ	Survey Calculation Method:	Minimum Curvature
Well Error:	0.0ft	Output errors are at	2.00 sigma
Reference Wellbore	Wellbore #1	Database:	Landmark
Reference Design:	Plan #1 (5-20-13)	Offset TVD Reference:	Offset Datum

Offset Design Northridge Pad Sec.4-T5N-R66W - Northridge 21-4D (Exist.) - Wellbore #1 - Wellbore #1												Offset Site Error:	0.0 ft
Survey Program: 150-MWD												Offset Well Error:	0.0 ft
Reference		Offset		Semi Major Axis			Distance						
Measured Depth (ft)	Vertical Depth (ft)	Measured Depth (ft)	Vertical Depth (ft)	Reference (ft)	Offset (ft)	Highside Toolface (°)	Offset Wellbore Centre +N/-S (ft)	+E/-W (ft)	Between Centres (ft)	Between Ellipses (ft)	Minimum Separation (ft)	Separation Factor	Warning
5,182.1	4,993.5	5,232.4	5,012.5	27.3	27.7	142.01	1,196.9	-231.9	136.0	96.9	39.06	3.482	CC, ES, SF
5,200.0	5,010.7	5,249.3	5,028.8	27.4	27.8	142.35	1,200.9	-233.6	136.1	97.0	39.05	3.484	
5,300.0	5,106.4	5,343.0	5,119.9	28.0	28.3	144.84	1,220.8	-242.1	139.1	100.4	38.68	3.596	
5,400.0	5,202.1	5,433.9	5,209.4	28.5	28.6	148.02	1,235.4	-248.5	147.6	109.6	37.94	3.889	
5,500.0	5,297.9	5,527.9	5,302.7	29.1	28.8	151.64	1,245.9	-253.1	161.5	124.4	37.02	4.362	
5,600.0	5,393.6	5,622.2	5,396.6	29.7	29.1	155.01	1,254.3	-257.1	178.1	141.9	36.24	4.915	
5,700.0	5,490.1	5,717.7	5,491.8	30.1	29.3	157.73	1,261.1	-260.2	195.0	159.3	35.69	5.464	
5,800.0	5,587.3	5,813.0	5,586.8	30.5	29.4	159.71	1,266.9	-262.5	210.4	175.0	35.41	5.941	
5,900.0	5,685.4	5,907.1	5,680.8	30.8	29.6	161.12	1,271.0	-263.8	224.6	189.3	35.29	6.363	
6,000.0	5,784.1	6,002.6	5,776.3	31.1	29.7	162.31	1,273.3	-264.7	237.6	202.3	35.21	6.746	
6,100.0	5,883.2	6,100.7	5,874.4	31.4	29.8	163.32	1,274.3	-265.7	248.3	213.2	35.15	7.064	
6,200.0	5,982.8	6,200.8	5,974.5	31.6	29.9	164.12	1,275.1	-267.0	255.9	220.8	35.11	7.289	
6,300.0	6,082.6	6,301.3	6,075.0	31.8	30.0	164.72	1,276.0	-268.7	260.0	224.9	35.08	7.411	
6,400.0	6,182.6	6,402.1	6,175.7	31.9	30.1	165.08	1,277.0	-270.5	260.4	225.4	35.07	7.427	
6,500.0	6,282.6	6,503.2	6,276.8	31.9	30.3	165.38	1,278.5	-272.4	258.3	196.9	61.41	4.206	
6,600.0	6,382.5	6,604.1	6,377.7	32.0	30.4	60.96	1,280.5	-274.1	254.9	219.7	35.21	7.239	
6,700.0	6,481.5	6,703.5	6,477.0	32.1	30.5	64.45	1,283.0	-275.8	245.7	211.3	34.36	7.151	
6,800.0	6,577.7	6,799.2	6,572.7	32.1	30.7	71.39	1,285.6	-277.2	231.9	197.8	34.11	6.798	
6,900.0	6,669.1	6,889.8	6,663.3	32.0	30.8	81.70	1,288.0	-278.5	218.5	182.3	36.25	6.030	
6,990.4	6,746.2	6,967.6	6,741.0	32.0	30.9	93.19	1,290.3	-279.8	213.0	172.8	40.26	5.292	
7,000.0	6,754.0	6,975.4	6,748.8	32.0	30.9	94.44	1,290.6	-280.0	213.1	172.4	40.71	5.235	
7,100.0	6,830.7	7,051.6	6,824.9	31.9	31.0	106.72	1,293.4	-281.8	224.9	180.5	44.47	5.058	
7,200.0	6,897.8	7,117.7	6,890.9	31.8	31.2	116.09	1,296.3	-283.7	259.8	214.2	45.59	5.698	
7,300.0	6,953.9	7,172.0	6,945.1	31.7	31.3	121.34	1,299.0	-285.4	316.2	271.5	44.69	7.075	
7,400.0	6,998.0	7,213.6	6,986.7	31.7	31.3	122.04	1,301.4	-286.8	389.0	345.5	43.47	8.948	
7,500.0	7,029.2	7,242.6	7,015.6	31.7	31.4	117.36	1,303.1	-287.7	472.9	429.5	43.40	10.894	
7,600.0	7,046.8	7,257.8	7,030.7	31.7	31.4	104.82	1,304.0	-288.2	563.7	519.0	44.71	12.608	
7,700.0	7,051.0	7,259.0	7,031.9	31.9	31.4	87.96	1,304.0	-288.2	658.1	613.2	44.88	14.661	
7,800.0	7,051.0	7,255.8	7,028.7	32.3	31.4	87.04	1,303.8	-288.2	754.0	707.5	46.49	16.217	
7,900.0	7,051.0	7,252.5	7,025.5	32.9	31.4	86.12	1,303.6	-288.1	850.8	802.6	48.26	17.629	
8,000.0	7,051.0	7,249.3	7,022.2	34.0	31.4	85.19	1,303.5	-288.0	948.3	898.2	50.15	18.908	

Northridge Pad Sec.4-T5N-R66W - Northridge 4AD (Exist.) - Wellbore #1 - Wellbore #1													Offset Site Error:	0.0 ft
Survey Program: 182-MWD													Offset Well Error:	0.0 ft
Reference		Offset		Semi Major Axis			Distance							Warning
Measured Depth Depth (ft)	Vertical Depth (ft)	Measured Depth (ft)	Vertical Depth (ft)	Reference (ft)	Offset (ft)	Highside Toolface (°)	Offset Wellbore Centre +N/-S (ft)	+E/-W (ft)	Between Centres (ft)	Between Ellipses (ft)	Minimum Separation (ft)	Separation Factor		
0.0	0.0	0.0	0.0	0.0	0.0	111.73	-130.8	328.2	353.5					
100.0	100.0	89.8	89.8	0.1	0.1	111.73	-130.7	328.0	353.1	352.9	0.21	1,651.798		
200.0	200.0	191.1	191.1	0.3	0.2	111.74	-130.5	327.2	352.3	351.7	0.56	628.226		
223.3	223.3	213.0	213.0	0.4	0.3	126.65	-130.4	327.1	352.2	351.5	0.66	535.905	CC, ES	
300.0	300.0	286.2	286.2	0.6	0.4	126.79	-130.2	327.3	353.3	352.3	0.98	360.262		
400.0	399.8	390.4	390.3	0.8	0.6	127.50	-130.5	327.1	356.4	355.0	1.43	249.047		
500.0	499.5	493.5	493.5	1.0	0.9	128.65	-130.3	325.6	360.4	358.5	1.89	190.234		
600.0	598.7	591.3	591.2	1.3	1.1	129.92	-129.3	324.5	366.7	364.3	2.36	155.280		
700.0	697.5	689.2	689.1	1.7	1.3	131.76	-129.9	323.1	375.9	373.1	2.85	131.773		
800.0	795.6	791.5	791.4	2.0	1.5	133.99	-130.6	321.1	387.7	384.3	3.38	114.667		
900.0	893.1	889.9	889.8	2.5	1.7	136.23	-130.5	318.7	401.7	397.7	3.92	102.546		
1,000.0	989.6	1,001.0	1,000.8	2.9	1.9	138.92	-129.1	314.8	417.4	412.9	4.49	92.991		
1,100.0	1,085.5	1,118.2	1,117.5	3.5	2.2	142.20	-126.1	305.0	431.6	426.5	5.08	84.999		
1,200.0	1,181.2	1,223.9	1,222.5	4.0	2.5	144.88	-120.4	294.5	444.0	438.4	5.65	78.638		
1,300.0	1,276.9	1,338.0	1,335.6	4.6	2.8	147.68	-112.9	280.8	455.1	448.9	6.23	73.107		
1,400.0	1,372.7	1,458.2	1,453.7	5.2	3.2	150.58	-101.8	261.7	462.2	455.4	6.81	67.854		
1,500.0	1,468.4	1,551.2	1,544.7	5.7	3.5	152.83	-92.3	245.2	468.2	460.9	7.34	63.751		
1,600.0	1,564.1	1,661.5	1,652.4	6.3	4.0	155.75	-82.3	223.3	474.6	466.7	7.91	59.963		
1,700.0	1,659.9	1,767.3	1,755.0	6.9	4.4	158.55	-71.1	200.2	479.3	470.8	8.50	56.409		
1,800.0	1,755.6	1,862.8	1,847.5	7.5	4.8	161.12	-61.3	178.4	484.8	475.8	9.06	53.533		
1,900.0	1,851.3	1,965.4	1,946.9	8.0	5.3	163.78	-50.4	155.1	491.2	481.5	9.65	50.913		
2,000.0	1,947.1	2,074.7	2,052.1	8.6	5.9	166.58	-37.0	128.9	496.5	486.2	10.30	48.198		
2,100.0	2,042.8	2,187.0	2,159.5	9.2	6.5	169.45	-21.2	100.4	500.4	489.4	11.02	45.422		
2,200.0	2,138.6	2,288.5	2,256.0	9.8	7.1	172.02	-4.9	73.5	503.0	491.2	11.74	42.853		
2,300.0	2,234.3	2,382.3	2,345.1	10.4	7.6	174.44	9.8	48.2	506.8	494.3	12.45	40.709		
2,400.0	2,330.0	2,477.7	2,436.0	11.0	8.1	176.83	24.3	22.8	512.1	498.9	13.19	38.814		
2,500.0	2,425.8	2,589.8	2,542.4	11.5	8.8	179.56	42.4	-7.2	517.5	503.4	14.09	36.727		
2,600.0	2,521.5	2,686.2	2,633.7	12.1	9.4	-178.18	59.5	-33.0	522.2	507.3	14.94	34.947		
2,700.0	2,617.2	2,783.8	2,725.8	12.7	10.0	-175.74	76.3	-60.8	527.9	512.0	15.89	33.216		
2,800.0	2,713.0	2,876.9	2,813.2	13.3	10.6	-173.29	91.7	-88.9	534.8	517.9	16.91	31.633		
2,900.0	2,808.7	2,962.0	2,893.8	13.9	11.1	-171.29	104.8	-112.7	544.4	526.6	17.85	30.507		
3,000.0	2,904.5	3,058.2	2,985.4	14.5	11.7	-169.20	118.6	-138.6	555.9	537.1	18.88	29.454		
3,100.0	3,000.2	3,166.9	3,088.6	15.1	12.3	-166.91	135.5	-168.2	566.9	546.9	20.05	28.278		
3,200.0	3,095.9	3,252.4	3,170.2	15.6	12.8	-165.29	148.7	-190.3	578.9	557.9	21.02	27.537		
3,300.0	3,191.7	3,337.0	3,251.3	16.2	13.3	-163.81	159.3	-211.7	594.2	572.2	21.99	27.027		
3,400.0	3,287.4	3,431.0	3,341.8	16.8	13.8	-162.31	169.9	-234.7	611.3	588.3	23.01	26.568		
3,500.0	3,383.1	3,517.7	3,425.5	17.4	14.2	-161.03	179.3	-255.5	629.3	605.3	23.98	26.244		
3,600.0	3,478.9	3,625.4	3,529.5	18.0	14.8	-159.60	190.9	-280.7	647.7	622.6	25.08	25.824		
3,700.0	3,574.6	3,722.7	3,623.5	18.6	15.3	-158.38	201.9	-303.4	665.8	639.7	26.13	25.481		
3,800.0	3,670.3	3,854.1	3,749.2	19.2	16.1	-156.57	220.9	-336.6	681.3	653.8	27.54	24.738		
3,900.0	3,766.1	3,967.2	3,855.8	19.7	16.8	-154.75	241.8	-368.4	693.7	664.7	28.96	23.956		
4,000.0	3,861.8	4,064.5	3,946.6	20.3	17.5	-153.10	261.0	-397.3	705.6	675.3	30.31	23.282		
4,100.0	3,957.6	4,150.7	4,027.3	20.9	18.1	-151.70	277.3	-422.8	718.9	687.3	31.53	22.799		
4,200.0	4,053.3	4,230.4	4,102.8	21.5	18.6	-150.63	290.4	-444.6	734.6	701.9	32.62	22.520		
4,300.0	4,149.0	4,326.3	4,194.3	22.1	19.2	-149.49	303.9	-470.1	752.7	718.8	33.82	22.253		
4,400.0	4,244.8	4,436.0	4,297.8	22.7	19.9	-148.00	321.9	-501.9	769.5	734.2	35.23	21.840		
4,500.0	4,340.5	4,546.9	4,402.3	23.3	20.6	-146.60	341.5	-533.2	785.3	748.6	36.65	21.424		
4,600.0	4,436.2	4,623.8	4,474.1	23.8	21.1	-145.51	355.6	-556.8	801.7	763.8	37.85	21.177		
4,700.0	4,532.0	4,737.4	4,579.9	24.4	22.0	-143.89	375.5	-593.0	819.7	780.2	39.44	20.785		
4,800.0	4,627.7	4,836.0	4,672.4	25.0	22.6	-142.70	394.0	-621.7	835.9	795.1	40.77	20.502		
4,900.0	4,723.4	4,918.8	4,750.6	25.6	23.1	-141.83	408.4	-645.0	853.3	811.4	41.92	20.355		
5,000.0	4,819.2	5,024.0	4,850.3	26.2	23.8	-140.85	426.0	-673.4	871.2	828.0	43.23	20.153		

Company:	Synergy Resources	Local Co-ordinate Reference:	Well SRC Kelly Farms 21-4-3NHZ
Project:	SEC.4-T5N-R66W	TVD Reference:	WELL @ 4765.0ft (Original Well Elev)
Reference Site:	SRC Kelly Farms Pad Sec.4-T5N-R66W	MD Reference:	WELL @ 4765.0ft (Original Well Elev)
Site Error:	0.0ft	North Reference:	True
Reference Well:	SRC Kelly Farms 21-4-3NHZ	Survey Calculation Method:	Minimum Curvature
Well Error:	0.0ft	Output errors are at	2.00 sigma
Reference Wellbore	Wellbore #1	Database:	Landmark
Reference Design:	Plan #1 (5-20-13)	Offset TVD Reference:	Offset Datum

Offset Design Northridge Pad Sec.4-T5N-R66W - Northridge 4AD (Exist.) - Wellbore #1 - Wellbore #1												Offset Site Error:	0.0 ft
Survey Program: 182-MWD												Offset Well Error:	0.0 ft
Reference	Offset	Semi Major Axis			Distance								Warning
Measured Depth (ft)	Vertical Depth (ft)	Measured Depth (ft)	Vertical Depth (ft)	Reference (ft)	Offset (ft)	Highside Toolface (°)	Offset Wellbore Centre +N/-S (ft)	+E/-W (ft)	Between Centres (ft)	Between Ellipses (ft)	Minimum Separation (ft)	Separation Factor	
5,100.0	4,914.9	5,118.0	4,939.9	26.8	24.4	-140.12	441.3	-697.3	889.2	844.8	44.39	20.031 SF	
5,200.0	5,010.7	5,191.8	5,010.9	27.4	24.7	-139.70	451.1	-714.9	909.2	863.8	45.32	20.060	
5,300.0	5,106.4	5,284.5	5,100.9	28.0	25.2	-139.38	461.0	-734.9	930.7	884.5	46.28	20.112	
5,400.0	5,202.1	5,383.1	5,197.6	28.5	25.6	-139.33	469.6	-752.1	952.3	905.2	47.13	20.207	
5,500.0	5,297.9	5,470.3	5,283.4	29.1	25.9	-139.40	476.3	-766.0	974.3	926.4	47.87	20.353	
5,600.0	5,393.6	5,564.1	5,376.3	29.7	26.2	-139.74	481.1	-777.9	997.1	948.6	48.53	20.548	

SRC Kelly Farms Pad Sec.4-T5N-R66W - SRC Kelly Farms 21-4-3NHZ #2 - Wellbore #1 - Plan #1 (5-2)												Offset Site Error:	0.0 ft
Survey Program: 0-MWD												Offset Well Error:	0.0 ft
Reference		Offset		Semi Major Axis			Distance						
Measured Depth (ft)	Vertical Depth (ft)	Measured Depth (ft)	Vertical Depth (ft)	Reference (ft)	Offset (ft)	Highside Toolface (°)	Offset Wellbore Centre +N/-S (ft)	+E/-W (ft)	Between Centres (ft)	Between Ellipses (ft)	Minimum Separation (ft)	Separation Factor	Warning
0.0	0.0	1.0	1.0	0.0	0.0	-160.80	-74.3	-25.9	78.7	78.7	0.00	N/A	
100.0	100.0	101.0	101.0	0.1	0.1	-160.80	-74.3	-25.9	78.7	78.5	0.23	346.712	
200.0	200.0	201.0	201.0	0.3	0.3	-160.80	-74.3	-25.9	78.7	78.0	0.68	116.338 CC	
300.0	300.0	301.0	301.0	0.6	0.6	-146.58	-74.3	-25.9	80.2	79.0	1.13	70.841	
400.0	399.8	400.8	400.8	0.8	0.8	-148.48	-74.3	-25.9	84.6	83.0	1.59	53.115	
500.0	499.5	500.5	500.5	1.0	1.0	-151.24	-74.3	-25.9	92.1	90.1	2.06	44.754	
600.0	598.7	599.7	599.7	1.3	1.2	-154.41	-74.3	-25.9	103.0	100.5	2.53	40.710	
700.0	697.5	698.5	698.5	1.7	1.5	-157.59	-74.3	-25.9	117.3	114.3	3.00	39.046	
800.0	795.6	796.6	796.6	2.0	1.7	-160.55	-74.3	-25.9	135.2	131.7	3.48	38.837	
900.0	893.1	894.1	894.1	2.5	1.9	-163.16	-74.3	-25.9	156.6	152.7	3.96	39.577	
1,000.0	989.6	990.6	990.6	2.9	2.1	-165.39	-74.3	-25.9	181.6	177.2	4.43	40.957	
1,100.0	1,085.5	1,086.5	1,086.5	3.5	2.3	-167.31	-74.3	-25.9	209.5	204.6	4.91	42.623	
1,200.0	1,181.2	1,182.2	1,182.2	4.0	2.5	-168.84	-74.3	-25.9	237.8	232.4	5.40	44.024	
1,300.0	1,276.9	1,277.9	1,277.9	4.6	2.8	-170.04	-74.3	-25.9	266.2	260.3	5.89	45.192	
1,400.0	1,372.7	1,373.7	1,373.7	5.2	3.0	-171.01	-74.3	-25.9	294.8	288.4	6.38	46.174	
1,500.0	1,468.4	1,478.0	1,478.0	5.7	3.2	-171.84	-73.3	-26.2	322.4	315.5	6.89	46.784	
1,600.0	1,564.1	1,587.6	1,587.5	6.3	3.5	-172.44	-68.5	-27.8	346.7	339.3	7.41	46.798	
1,700.0	1,659.9	1,699.1	1,698.6	6.9	3.7	-172.85	-59.5	-30.7	367.2	359.3	7.94	46.271	
1,800.0	1,755.6	1,812.3	1,810.9	7.5	4.0	-173.10	-46.1	-34.9	384.0	375.5	8.48	45.283	
1,900.0	1,851.3	1,926.9	1,923.9	8.0	4.3	-173.22	-28.3	-40.6	396.9	387.9	9.04	43.913	
2,000.0	1,947.1	2,042.5	2,037.1	8.6	4.6	-173.23	-6.0	-47.8	405.9	396.3	9.61	42.223	
2,100.0	2,042.8	2,158.7	2,149.8	9.2	5.0	-173.13	20.8	-56.4	410.9	400.7	10.20	40.264	
2,200.0	2,138.6	2,275.2	2,261.6	9.8	5.5	-172.92	52.0	-66.4	411.9	401.0	10.81	38.096	
2,300.0	2,234.3	2,384.2	2,365.1	10.4	6.0	-172.63	84.8	-76.9	409.3	397.8	11.42	35.829	
2,400.0	2,330.0	2,484.1	2,459.7	11.0	6.5	-172.34	115.4	-86.7	406.0	394.0	12.02	33.785	
2,500.0	2,425.8	2,584.1	2,554.3	11.5	7.1	-172.05	146.1	-96.5	402.8	390.2	12.62	31.911	
2,600.0	2,521.5	2,684.0	2,648.9	12.1	7.6	-171.75	176.7	-106.4	399.7	386.4	13.24	30.189	
2,700.0	2,617.2	2,783.9	2,743.5	12.7	8.2	-171.45	207.4	-116.2	396.5	382.6	13.86	28.603	
2,800.0	2,713.0	2,883.8	2,838.1	13.3	8.7	-171.14	238.0	-126.0	393.3	378.8	14.49	27.139	
2,900.0	2,808.7	2,983.8	2,932.7	13.9	9.3	-170.83	268.7	-135.8	390.2	375.0	15.13	25.785	
3,000.0	2,904.5	3,083.7	3,027.3	14.5	9.9	-170.51	299.3	-145.7	387.0	371.2	15.78	24.529	
3,100.0	3,000.2	3,183.6	3,121.9	15.1	10.5	-170.19	330.0	-155.5	383.9	367.5	16.43	23.362	
3,200.0	3,095.9	3,283.6	3,216.5	15.6	11.1	-169.86	360.6	-165.3	380.8	363.7	17.09	22.276	
3,300.0	3,191.7	3,383.5	3,311.1	16.2	11.7	-169.53	391.3	-175.1	377.7	359.9	17.76	21.262	
3,400.0	3,287.4	3,483.4	3,405.7	16.8	12.4	-169.19	421.9	-184.9	374.6	356.1	18.44	20.315	
3,500.0	3,383.1	3,583.3	3,500.3	17.4	13.0	-168.85	452.6	-194.8	371.5	352.4	19.12	19.427	
3,600.0	3,478.9	3,683.3	3,594.9	18.0	13.6	-168.50	483.2	-204.6	368.4	348.6	19.81	18.594	
3,700.0	3,574.6	3,783.2	3,689.5	18.6	14.2	-168.14	513.9	-214.4	365.4	344.9	20.51	17.812	
3,800.0	3,670.3	3,883.1	3,784.1	19.2	14.8	-167.78	544.5	-224.2	362.3	341.1	21.22	17.075	
3,900.0	3,766.1	3,983.0	3,878.7	19.7	15.5	-167.41	575.2	-234.1	359.3	337.4	21.94	16.380	
4,000.0	3,861.8	4,083.0	3,973.3	20.3	16.1	-167.04	605.8	-243.9	356.3	333.6	22.66	15.724	
4,100.0	3,957.6	4,182.9	4,067.9	20.9	16.7	-166.66	636.5	-253.7	353.3	329.9	23.39	15.103	
4,200.0	4,053.3	4,282.8	4,162.5	21.5	17.4	-166.27	667.1	-263.5	350.3	326.2	24.14	14.516	
4,300.0	4,149.0	4,382.8	4,257.1	22.1	18.0	-165.88	697.8	-273.4	347.4	322.5	24.89	13.959	
4,400.0	4,244.8	4,482.7	4,351.7	22.7	18.6	-165.48	728.4	-283.2	344.4	318.8	25.65	13.430	
4,500.0	4,340.5	4,582.6	4,446.3	23.3	19.3	-165.07	759.1	-293.0	341.5	315.1	26.42	12.927	
4,600.0	4,436.2	4,682.5	4,540.9	23.8	19.9	-164.66	789.7	-302.8	338.6	311.4	27.20	12.449	
4,700.0	4,532.0	4,782.5	4,635.5	24.4	20.5	-164.24	820.4	-312.7	335.7	307.7	27.99	11.994	
4,800.0	4,627.7	4,882.4	4,730.1	25.0	21.2	-163.81	851.0	-322.5	332.8	304.0	28.79	11.559	
4,900.0	4,723.4	4,982.3	4,824.7	25.6	21.8	-163.37	881.7	-332.3	330.0	300.4	29.61	11.145	
5,000.0	4,819.2	5,082.2	4,919.3	26.2	22.4	-162.93	912.3	-342.1	327.2	296.7	30.43	10.749	
5,100.0	4,914.9	5,182.2	5,013.9	26.8	23.1	-162.48	943.0	-351.9	324.3	293.1	31.27	10.371	

Company:	Synergy Resources	Local Co-ordinate Reference:	Well SRC Kelly Farms 21-4-3NHZ
Project:	SEC.4-T5N-R66W	TVD Reference:	WELL @ 4765.0ft (Original Well Elev)
Reference Site:	SRC Kelly Farms Pad Sec.4-T5N-R66W	MD Reference:	WELL @ 4765.0ft (Original Well Elev)
Site Error:	0.0ft	North Reference:	True
Reference Well:	SRC Kelly Farms 21-4-3NHZ	Survey Calculation Method:	Minimum Curvature
Well Error:	0.0ft	Output errors are at	2.00 sigma
Reference Wellbore	Wellbore #1	Database:	Landmark
Reference Design:	Plan #1 (5-20-13)	Offset TVD Reference:	Offset Datum

Offset Design												Offset Site Error:	0.0 ft
Survey Program: 0-MWD												Offset Well Error:	0.0 ft
Reference		Offset		Semi Major Axis			Distance						Warning
Measured Depth (ft)	Vertical Depth (ft)	Measured Depth (ft)	Vertical Depth (ft)	Reference (ft)	Offset (ft)	Highside Toolface (°)	Offset Wellbore Centre +N/-S (ft)	+E/-W (ft)	Between Centres (ft)	Between Ellipses (ft)	Minimum Separation (ft)	Separation Factor	
5,200.0	5,010.7	5,282.1	5,108.5	27.4	23.7	-162.02	973.6	-361.8	321.5	289.4	32.12	10.009	
5,300.0	5,106.4	5,382.0	5,203.1	28.0	24.4	-161.56	1,004.3	-371.6	318.8	285.8	32.99	9.663	
5,400.0	5,202.1	5,479.9	5,295.9	28.5	25.0	-161.09	1,034.2	-381.2	316.1	282.2	33.85	9.339	
5,471.3	5,270.4	5,544.6	5,357.4	29.0	25.3	-160.86	1,053.0	-387.2	315.3	281.0	34.37	9.175	
5,500.0	5,297.9	5,570.7	5,382.4	29.1	25.4	-160.80	1,060.2	-389.5	315.5	280.9	34.57	9.126	
5,600.0	5,393.6	5,661.3	5,469.7	29.7	25.8	-160.69	1,083.5	-397.0	317.7	282.5	35.20	9.024	
5,700.0	5,490.1	5,751.9	5,557.6	30.1	26.2	-160.67	1,104.2	-403.6	320.6	284.8	35.74	8.970	
5,800.0	5,587.3	5,842.5	5,646.2	30.5	26.5	-160.65	1,122.2	-409.4	323.1	286.9	36.20	8.923	
5,900.0	5,685.4	5,933.0	5,735.2	30.8	26.8	-160.63	1,137.5	-414.3	325.2	288.6	36.61	8.883	
6,000.0	5,784.1	6,023.4	5,824.7	31.1	27.1	-160.62	1,150.2	-418.4	327.0	290.0	36.95	8.850	
6,100.0	5,883.2	6,113.9	5,914.5	31.4	27.3	-160.61	1,160.1	-421.5	328.4	291.2	37.22	8.822	
6,200.0	5,982.8	6,200.0	6,000.4	31.6	27.4	-160.61	1,167.0	-423.8	329.4	292.0	37.42	8.803	
6,300.0	6,082.6	6,294.6	6,094.8	31.8	27.6	-160.60	1,171.8	-425.3	330.1	292.5	37.57	8.785	
6,400.0	6,182.6	6,385.0	6,185.2	31.9	27.7	-160.60	1,173.6	-425.9	330.3	292.7	37.65	8.774	
6,500.0	6,282.6	6,483.4	6,283.6	31.9	27.8	-175.50	1,173.7	-425.9	330.3	273.3	57.01	5.795	
6,600.0	6,382.5	6,585.2	6,385.4	32.0	27.9	94.47	1,173.7	-424.1	330.3	292.2	38.18	8.651	
6,700.0	6,481.5	6,688.9	6,487.9	32.1	27.9	94.36	1,173.7	-409.3	330.3	292.0	38.27	8.631	
6,800.0	6,577.7	6,792.4	6,587.1	32.1	27.9	94.16	1,173.7	-380.0	330.2	292.1	38.14	8.657	
6,900.0	6,669.1	6,895.8	6,680.8	32.0	27.9	93.87	1,173.7	-336.7	330.1	292.2	37.90	8.710	
7,000.0	6,754.0	6,998.8	6,767.2	32.0	27.8	93.51	1,173.7	-280.6	330.0	292.3	37.67	8.759	
7,100.0	6,830.7	7,101.5	6,844.3	31.9	27.7	93.08	1,173.7	-213.0	329.8	292.2	37.63	8.766	
7,200.0	6,897.8	7,203.8	6,910.8	31.8	27.6	92.59	1,173.7	-135.3	329.7	291.7	37.96	8.685	
7,300.0	6,953.9	7,305.7	6,965.3	31.7	27.6	92.05	1,173.7	-49.4	329.5	290.7	38.84	8.485	
7,400.0	6,998.0	7,407.0	7,006.9	31.7	27.5	91.47	1,173.7	42.9	329.4	289.1	40.37	8.161	
7,500.0	7,029.2	7,507.9	7,035.0	31.7	27.5	90.86	1,173.7	139.7	329.4	286.8	42.55	7.741	
7,600.0	7,046.8	7,608.3	7,049.2	31.7	27.6	90.23	1,173.7	239.0	329.3	284.0	45.29	7.271	
7,633.1	7,049.8	7,641.4	7,050.8	31.8	27.6	89.99	1,173.7	272.1	329.3	283.0	46.32	7.111	
7,700.0	7,051.0	7,708.3	7,051.0	31.9	27.9	89.83	1,173.7	339.0	329.3	280.8	48.50	6.790	
7,800.0	7,051.0	7,808.3	7,051.0	32.3	28.6	89.83	1,173.7	439.0	329.3	277.2	52.15	6.315	
7,900.0	7,051.0	7,908.3	7,051.0	32.9	30.0	89.83	1,173.7	539.0	329.3	273.2	56.12	5.868	
8,000.0	7,051.0	8,008.3	7,051.0	34.0	31.8	89.83	1,173.7	639.0	329.3	269.0	60.36	5.456	
8,100.0	7,051.0	8,108.3	7,051.0	35.5	33.8	89.83	1,173.7	739.0	329.3	264.5	64.81	5.082	
8,200.0	7,051.0	8,208.3	7,051.0	37.3	36.0	89.83	1,173.7	839.0	329.3	259.9	69.42	4.744	
8,300.0	7,051.0	8,308.3	7,051.0	39.3	38.4	89.83	1,173.7	939.0	329.3	255.2	74.18	4.440	
8,400.0	7,051.0	8,408.3	7,051.0	41.5	40.8	89.83	1,173.7	1,039.0	329.3	250.3	79.04	4.166	
8,500.0	7,051.0	8,508.3	7,051.0	43.8	43.2	89.83	1,173.7	1,139.0	329.3	245.3	84.00	3.920	
8,600.0	7,051.0	8,608.3	7,051.0	46.2	45.7	89.83	1,173.7	1,239.0	329.3	240.3	89.04	3.699	
8,700.0	7,051.0	8,708.3	7,051.0	48.6	48.2	89.83	1,173.7	1,339.0	329.3	235.2	94.15	3.498	
8,800.0	7,051.0	8,808.3	7,051.0	51.0	50.8	89.83	1,173.7	1,439.0	329.3	230.0	99.31	3.316	
8,900.0	7,051.0	8,908.3	7,051.0	53.6	53.4	89.83	1,173.7	1,539.0	329.3	224.8	104.51	3.151	
9,000.0	7,051.0	9,008.3	7,051.0	56.1	56.0	89.83	1,173.7	1,639.0	329.3	219.6	109.76	3.001	
9,100.0	7,051.0	9,108.3	7,051.0	58.7	58.6	89.83	1,173.7	1,739.0	329.3	214.3	115.04	2.863	
9,200.0	7,051.0	9,208.3	7,051.0	61.2	61.2	89.83	1,173.7	1,839.0	329.3	209.0	120.35	2.736	
9,300.0	7,051.0	9,308.3	7,051.0	63.9	63.9	89.83	1,173.7	1,939.0	329.3	203.6	125.69	2.620	
9,400.0	7,051.0	9,408.3	7,051.0	66.5	66.5	89.83	1,173.7	2,039.0	329.3	198.3	131.05	2.513	
9,500.0	7,051.0	9,508.3	7,051.0	69.1	69.2	89.83	1,173.7	2,139.0	329.3	192.9	136.43	2.414	
9,600.0	7,051.0	9,608.3	7,051.0	71.8	71.9	89.83	1,173.7	2,239.0	329.3	187.5	141.83	2.322	
9,700.0	7,051.0	9,708.3	7,051.0	74.4	74.6	89.83	1,173.7	2,339.0	329.3	182.1	147.25	2.237	
9,800.0	7,051.0	9,808.3	7,051.0	77.1	77.3	89.83	1,173.7	2,439.0	329.3	176.7	152.68	2.157	
9,900.0	7,051.0	9,908.3	7,051.0	79.8	80.0	89.83	1,173.7	2,539.0	329.3	171.2	158.12	2.083	
10,000.0	7,051.0	10,008.3	7,051.0	82.5	82.7	89.83	1,173.7	2,639.0	329.3	165.8	163.58	2.013	
10,100.0	7,051.0	10,108.3	7,051.0	85.2	85.4	89.83	1,173.7	2,739.0	329.3	160.3	169.05	1.948	

CC - Min centre to center distance or convergent point, SF - min separation factor, ES - min ellipse separation

Company:	Synergy Resources	Local Co-ordinate Reference:	Well SRC Kelly Farms 21-4-3NHZ
Project:	SEC.4-T5N-R66W	TVD Reference:	WELL @ 4765.0ft (Original Well Elev)
Reference Site:	SRC Kelly Farms Pad Sec.4-T5N-R66W	MD Reference:	WELL @ 4765.0ft (Original Well Elev)
Site Error:	0.0ft	North Reference:	True
Reference Well:	SRC Kelly Farms 21-4-3NHZ	Survey Calculation Method:	Minimum Curvature
Well Error:	0.0ft	Output errors are at	2.00 sigma
Reference Wellbore	Wellbore #1	Database:	Landmark
Reference Design:	Plan #1 (5-20-13)	Offset TVD Reference:	Offset Datum

Offset Design SRC Kelly Farms Pad Sec.4-T5N-R66W - SRC Kelly Farms 21-4-3NHZ #2 - Wellbore #1 - Plan #1 (5-2												Offset Site Error:	0.0 ft
Survey Program: 0-MWD												Offset Well Error:	0.0 ft
Reference		Offset		Semi Major Axis			Distance						
Measured Depth (ft)	Vertical Depth (ft)	Measured Depth (ft)	Vertical Depth (ft)	Reference (ft)	Offset (ft)	Highside Toolface (°)	Offset Wellbore Centre +N/-S (ft)	+E/-W (ft)	Between Centres (ft)	Between Ellipses (ft)	Minimum Separation (ft)	Separation Factor	Warning
10,200.0	7,051.0	10,208.3	7,051.0	87.9	88.2	89.83	1,173.7	2,839.0	329.3	154.8	174.52	1.887	
10,300.0	7,051.0	10,308.3	7,051.0	90.6	90.9	89.83	1,173.7	2,939.0	329.3	149.3	180.01	1.830	
10,400.0	7,051.0	10,408.3	7,051.0	93.3	93.6	89.83	1,173.7	3,039.0	329.3	143.8	185.50	1.775	
10,500.0	7,051.0	10,508.3	7,051.0	96.0	96.4	89.83	1,173.7	3,139.0	329.3	138.3	191.00	1.724	
10,600.0	7,051.0	10,608.3	7,051.0	98.8	99.1	89.83	1,173.7	3,239.0	329.3	132.8	196.50	1.676	
10,700.0	7,051.0	10,708.3	7,051.0	101.5	101.9	89.83	1,173.7	3,339.0	329.3	127.3	202.01	1.630	
10,800.0	7,051.0	10,808.3	7,051.0	104.2	104.6	89.83	1,173.7	3,439.0	329.3	121.8	207.53	1.587	
10,900.0	7,051.0	10,908.3	7,051.0	107.0	107.4	89.83	1,173.7	3,539.0	329.3	116.3	213.05	1.546	
11,000.0	7,051.0	11,008.3	7,051.0	109.7	110.1	89.83	1,173.7	3,639.0	329.3	110.8	218.58	1.507	
11,100.0	7,051.0	11,108.3	7,051.0	112.5	112.9	89.83	1,173.7	3,739.0	329.3	105.2	224.11	1.470 Level 3	
11,200.0	7,051.0	11,208.3	7,051.0	115.2	115.6	89.83	1,173.7	3,839.0	329.3	99.7	229.65	1.434 Level 3	
11,300.0	7,051.0	11,308.3	7,051.0	118.0	118.4	89.83	1,173.7	3,939.0	329.3	94.2	235.19	1.400 Level 3	
11,400.0	7,051.0	11,408.3	7,051.0	120.7	121.2	89.83	1,173.7	4,039.0	329.3	88.6	240.73	1.368 Level 3	
11,500.0	7,051.0	11,508.3	7,051.0	123.5	123.9	89.83	1,173.7	4,139.0	329.3	83.1	246.28	1.337 Level 3	
11,600.0	7,051.0	11,608.3	7,051.0	126.2	126.7	89.83	1,173.7	4,239.0	329.3	77.5	251.83	1.308 Level 3	
11,700.0	7,051.0	11,708.3	7,051.0	129.0	129.5	89.83	1,173.7	4,339.0	329.3	72.0	257.38	1.280 Level 3	
11,800.0	7,051.0	11,808.3	7,051.0	131.8	132.2	89.83	1,173.7	4,439.0	329.3	66.4	262.93	1.253 Level 3	
11,900.0	7,051.0	11,908.3	7,051.0	134.5	135.0	89.83	1,173.7	4,539.0	329.3	60.9	268.49	1.227 Level 2	
12,000.0	7,051.0	12,008.3	7,051.0	137.3	137.8	89.83	1,173.7	4,639.0	329.3	55.3	274.05	1.202 Level 2	
12,100.0	7,051.0	12,108.3	7,051.0	140.1	140.6	89.83	1,173.7	4,739.0	329.3	49.7	279.61	1.178 Level 2	
12,200.0	7,051.0	12,208.3	7,051.0	142.8	143.3	89.83	1,173.7	4,839.0	329.3	44.2	285.18	1.155 Level 2	
12,300.0	7,051.0	12,308.3	7,051.0	145.6	146.1	89.83	1,173.7	4,939.0	329.3	38.6	290.74	1.133 Level 2	
12,400.0	7,051.0	12,408.3	7,051.0	148.4	148.9	89.83	1,173.7	5,039.0	329.3	33.0	296.31	1.111 Level 2	
12,500.0	7,051.0	12,508.3	7,051.0	151.2	151.7	89.83	1,173.7	5,139.0	329.3	27.5	301.88	1.091 Level 2	
12,558.3	7,051.0	12,566.6	7,051.0	152.8	153.3	89.83	1,173.7	5,197.3	329.3	24.2	305.13	1.079 Level 2	
12,600.0	7,051.0	12,600.6	7,051.0	153.9	154.2	89.83	1,173.7	5,231.3	329.4	22.2	307.24	1.072 Level 2, ES, SF	
12,622.9	7,051.0	12,600.6	7,051.0	154.6	154.2	89.83	1,173.7	5,231.3	330.8	22.9	307.88	1.074 Level 2	

Company:	Synergy Resources	Local Co-ordinate Reference:	Well SRC Kelly Farms 21-4-3NHZ
Project:	SEC.4-T5N-R66W	TVD Reference:	WELL @ 4765.0ft (Original Well Elev)
Reference Site:	SRC Kelly Farms Pad Sec.4-T5N-R66W	MD Reference:	WELL @ 4765.0ft (Original Well Elev)
Site Error:	0.0ft	North Reference:	True
Reference Well:	SRC Kelly Farms 21-4-3NHZ	Survey Calculation Method:	Minimum Curvature
Well Error:	0.0ft	Output errors are at	2.00 sigma
Reference Wellbore	Wellbore #1	Database:	Landmark
Reference Design:	Plan #1 (5-20-13)	Offset TVD Reference:	Offset Datum

Offset Design												Offset Site Error:	0.0 ft
Survey Program: 0-MWD												Offset Well Error:	0.0 ft
Reference		Offset		Semi Major Axis			Distance						
Measured Depth (ft)	Vertical Depth (ft)	Measured Depth (ft)	Vertical Depth (ft)	Reference (ft)	Offset (ft)	Highside Toolface (°)	Offset Wellbore Centre +N/-S (ft)	+E/-W (ft)	Between Centres (ft)	Between Ellipses (ft)	Minimum Separation (ft)	Separation Factor	Warning
0.0	0.0	2.0	2.0	0.0	0.0	-130.99	-30.2	-34.8	46.1	46.1	0.00	N/A	
100.0	100.0	102.0	102.0	0.1	0.1	-130.99	-30.2	-34.8	46.1	45.9	0.23	201.085	
200.0	200.0	202.0	202.0	0.3	0.3	-130.99	-30.2	-34.8	46.1	45.4	0.68	67.916 CC, ES	
300.0	300.0	302.0	302.0	0.6	0.6	-117.99	-30.2	-34.8	46.9	45.8	1.13	41.504	
400.0	399.8	401.8	401.8	0.8	0.8	-123.29	-30.2	-34.8	49.6	48.0	1.59	31.200	
500.0	499.5	501.5	501.5	1.0	1.0	-130.82	-30.2	-34.8	54.8	52.8	2.06	26.612	
600.0	598.7	600.7	600.7	1.3	1.2	-139.03	-30.2	-34.8	63.5	61.0	2.54	24.966	
700.0	697.5	699.5	699.5	1.7	1.5	-146.61	-30.2	-34.8	76.1	73.0	3.03	25.109	
800.0	795.6	800.2	800.2	2.0	1.7	-152.44	-28.6	-35.5	91.3	87.8	3.51	25.997	
900.0	893.1	901.6	901.4	2.5	1.9	-156.29	-23.8	-37.7	107.4	103.4	3.99	26.901	
1,000.0	989.6	1,003.5	1,003.0	2.9	2.2	-158.86	-15.6	-41.5	124.1	119.6	4.49	27.652	
1,100.0	1,085.5	1,106.2	1,104.9	3.5	2.4	-160.55	-4.1	-46.8	140.5	135.5	5.01	28.053	
1,200.0	1,181.2	1,210.0	1,207.3	4.0	2.7	-161.31	10.9	-53.6	154.1	148.6	5.56	27.701	
1,300.0	1,276.9	1,310.7	1,306.2	4.6	3.0	-161.50	27.9	-61.4	165.5	159.3	6.14	26.931	
1,400.0	1,372.7	1,410.0	1,403.8	5.2	3.4	-161.65	44.8	-69.1	176.7	169.9	6.74	26.229	
1,500.0	1,468.4	1,509.4	1,501.5	5.7	3.7	-161.77	61.6	-76.8	187.9	180.5	7.34	25.610	
1,600.0	1,564.1	1,608.8	1,599.1	6.3	4.1	-161.88	78.5	-84.5	199.1	191.1	7.94	25.079	
1,700.0	1,659.9	1,708.1	1,696.7	6.9	4.5	-161.98	95.3	-92.3	210.3	201.7	8.55	24.602	
1,800.0	1,755.6	1,807.5	1,794.3	7.5	4.9	-162.07	112.2	-100.0	221.5	212.3	9.16	24.180	
1,900.0	1,851.3	1,906.9	1,892.0	8.0	5.3	-162.15	129.1	-107.7	232.7	222.9	9.78	23.805	
2,000.0	1,947.1	2,006.2	1,989.6	8.6	5.6	-162.23	145.9	-115.4	243.9	233.5	10.39	23.469	
2,100.0	2,042.8	2,105.6	2,087.2	9.2	6.0	-162.29	162.8	-123.1	255.1	244.1	11.01	23.168	
2,200.0	2,138.6	2,205.0	2,184.8	9.8	6.4	-162.35	179.7	-130.8	266.4	254.7	11.63	22.895	
2,300.0	2,234.3	2,304.3	2,282.5	10.4	6.8	-162.41	196.5	-138.6	277.6	265.3	12.26	22.648	
2,400.0	2,330.0	2,403.7	2,380.1	11.0	7.2	-162.46	213.4	-146.3	288.8	275.9	12.88	22.422	
2,500.0	2,425.8	2,503.1	2,477.7	11.5	7.6	-162.51	230.3	-154.0	300.0	286.5	13.50	22.216	
2,600.0	2,521.5	2,602.5	2,575.3	12.1	8.0	-162.55	247.1	-161.7	311.2	297.1	14.13	22.027	
2,700.0	2,617.2	2,701.8	2,672.9	12.7	8.4	-162.60	264.0	-169.4	322.4	307.7	14.75	21.853	
2,800.0	2,713.0	2,801.2	2,770.6	13.3	8.8	-162.63	280.9	-177.1	333.6	318.3	15.38	21.693	
2,900.0	2,808.7	2,900.6	2,868.2	13.9	9.2	-162.67	297.7	-184.9	344.9	328.8	16.01	21.544	
3,000.0	2,904.5	2,999.9	2,965.8	14.5	9.6	-162.70	314.6	-192.6	356.1	339.4	16.63	21.406	
3,100.0	3,000.2	3,099.3	3,063.4	15.1	10.0	-162.74	331.4	-200.3	367.3	350.0	17.26	21.278	
3,200.0	3,095.9	3,198.7	3,161.1	15.6	10.4	-162.77	348.3	-208.0	378.5	360.6	17.89	21.158	
3,300.0	3,191.7	3,298.0	3,258.7	16.2	10.9	-162.79	365.2	-215.7	389.7	371.2	18.52	21.046	
3,400.0	3,287.4	3,397.4	3,356.3	16.8	11.3	-162.82	382.0	-223.4	400.9	381.8	19.15	20.941	
3,500.0	3,383.1	3,496.8	3,453.9	17.4	11.7	-162.85	398.9	-231.2	412.1	392.4	19.77	20.842	
3,600.0	3,478.9	3,596.1	3,551.6	18.0	12.1	-162.87	415.8	-238.9	423.4	403.0	20.40	20.749	
3,700.0	3,574.6	3,695.5	3,649.2	18.6	12.5	-162.89	432.6	-246.6	434.6	413.5	21.03	20.662	
3,800.0	3,670.3	3,794.9	3,746.8	19.2	12.9	-162.91	449.5	-254.3	445.8	424.1	21.66	20.579	
3,900.0	3,766.1	3,894.2	3,844.4	19.7	13.3	-162.93	466.4	-262.0	457.0	434.7	22.29	20.501	
4,000.0	3,861.8	3,993.6	3,942.0	20.3	13.7	-162.95	483.2	-269.7	468.2	445.3	22.92	20.427	
4,100.0	3,957.6	4,093.0	4,039.7	20.9	14.1	-162.97	500.1	-277.5	479.4	455.9	23.55	20.357	
4,200.0	4,053.3	4,192.4	4,137.3	21.5	14.5	-162.99	516.9	-285.2	490.6	466.5	24.18	20.290	
4,300.0	4,149.0	4,291.7	4,234.9	22.1	14.9	-163.01	533.8	-292.9	501.9	477.0	24.81	20.227	
4,400.0	4,244.8	4,391.1	4,332.5	22.7	15.3	-163.02	550.7	-300.6	513.1	487.6	25.44	20.167	
4,500.0	4,340.5	4,490.5	4,430.2	23.3	15.8	-163.04	567.5	-308.3	524.3	498.2	26.07	20.110	
4,600.0	4,436.2	4,589.8	4,527.8	23.8	16.2	-163.05	584.4	-316.0	535.5	508.8	26.70	20.055	
4,700.0	4,532.0	4,689.2	4,625.4	24.4	16.6	-163.07	601.3	-323.8	546.7	519.4	27.33	20.003	
4,800.0	4,627.7	4,788.6	4,723.0	25.0	17.0	-163.08	618.1	-331.5	557.9	530.0	27.96	19.953	
4,900.0	4,723.4	4,887.9	4,820.7	25.6	17.4	-163.09	635.0	-339.2	569.2	540.6	28.59	19.905	
5,000.0	4,819.2	4,987.3	4,918.3	26.2	17.8	-163.11	651.9	-346.9	580.4	551.1	29.22	19.859	
5,100.0	4,914.9	5,086.7	5,015.9	26.8	18.2	-163.12	668.7	-354.6	591.6	561.7	29.86	19.815	

CC - Min centre to center distance or convergent point, SF - min separation factor, ES - min ellipse separation

Company:	Synergy Resources	Local Co-ordinate Reference:	Well SRC Kelly Farms 21-4-3NHZ
Project:	SEC.4-T5N-R66W	TVD Reference:	WELL @ 4765.0ft (Original Well Elev)
Reference Site:	SRC Kelly Farms Pad Sec.4-T5N-R66W	MD Reference:	WELL @ 4765.0ft (Original Well Elev)
Site Error:	0.0ft	North Reference:	True
Reference Well:	SRC Kelly Farms 21-4-3NHZ	Survey Calculation Method:	Minimum Curvature
Well Error:	0.0ft	Output errors are at	2.00 sigma
Reference Wellbore	Wellbore #1	Database:	Landmark
Reference Design:	Plan #1 (5-20-13)	Offset TVD Reference:	Offset Datum

Offset Design												Offset Site Error:	0.0 ft
Survey Program: 0-MWD												Offset Well Error:	0.0 ft
Reference		Offset		Semi Major Axis			Distance						Warning
Measured Depth (ft)	Vertical Depth (ft)	Measured Depth (ft)	Vertical Depth (ft)	Reference (ft)	Offset (ft)	Highside Toolface (°)	Offset Wellbore Centre +N/-S (ft)	+E/-W (ft)	Between Centres (ft)	Between Ellipses (ft)	Minimum Separation (ft)	Separation Factor	
5,200.0	5,010.7	5,186.0	5,113.5	27.4	18.6	-163.13	685.6	-362.3	602.8	572.3	30.49	19.773	
5,300.0	5,106.4	5,285.4	5,211.1	28.0	19.0	-163.14	702.4	-370.1	614.0	582.9	31.12	19.732	
5,400.0	5,202.1	5,384.8	5,308.8	28.5	19.4	-163.15	719.3	-377.8	625.2	593.5	31.75	19.693	
5,500.0	5,297.9	5,484.2	5,406.4	29.1	19.8	-163.16	736.2	-385.5	636.4	604.1	32.38	19.656	
5,600.0	5,393.6	5,583.5	5,504.0	29.7	20.3	-163.18	753.0	-393.2	647.6	614.6	33.01	19.615	
5,700.0	5,490.1	5,683.1	5,601.9	30.1	20.7	-163.18	769.9	-400.9	656.4	622.8	33.63	19.520	
5,800.0	5,587.3	5,783.0	5,700.0	30.5	21.1	-163.07	786.9	-408.7	661.9	627.7	34.23	19.339	
5,900.0	5,685.4	5,877.2	5,792.5	30.8	21.5	-162.88	802.8	-415.9	664.2	629.4	34.78	19.098	
6,000.0	5,784.1	5,960.0	5,874.2	31.1	21.7	-162.70	815.0	-421.6	665.2	630.0	35.19	18.900	
6,100.0	5,883.2	6,042.8	5,956.3	31.4	21.9	-162.54	825.1	-426.2	665.4	629.9	35.54	18.722	
6,200.0	5,982.8	6,125.7	6,038.7	31.6	22.1	-162.39	833.1	-429.8	664.9	629.1	35.83	18.559	
6,300.0	6,082.6	6,208.6	6,121.4	31.8	22.3	-162.26	838.9	-432.5	663.6	627.6	36.05	18.410	
6,400.0	6,182.6	6,300.0	6,212.7	31.9	22.4	-162.13	842.7	-434.2	661.7	625.5	36.22	18.269	
6,500.0	6,282.6	6,374.5	6,287.2	31.9	22.5	-176.98	843.9	-434.8	660.0	608.1	51.91	12.714	
6,533.3	6,315.9	6,405.2	6,317.9	32.0	22.6	93.05	844.0	-434.8	660.0	623.4	36.56	18.052	
6,600.0	6,382.5	6,471.9	6,384.5	32.0	22.7	93.15	844.0	-434.8	660.1	623.2	36.81	17.929	
6,700.0	6,481.5	6,570.9	6,483.5	32.1	22.8	94.25	844.0	-434.8	660.9	623.5	37.41	17.668	
6,800.0	6,577.7	6,675.2	6,587.7	32.1	22.9	96.17	844.0	-430.4	663.1	625.0	38.12	17.396	
6,900.0	6,669.1	6,765.7	6,696.2	32.0	22.9	98.09	844.0	-409.9	666.0	627.4	38.58	17.263	
7,000.0	6,754.0	6,900.6	6,804.2	32.0	22.9	99.86	844.0	-371.0	669.3	630.6	38.77	17.266	
7,100.0	6,830.7	7,020.0	6,908.3	31.9	22.8	101.45	844.0	-313.0	672.8	634.1	38.77	17.357	
7,200.0	6,897.8	7,143.5	7,004.4	31.8	22.7	102.80	844.0	-235.6	676.2	637.4	38.79	17.431	
7,300.0	6,953.9	7,270.8	7,088.0	31.7	22.6	103.85	844.0	-139.9	679.0	639.8	39.17	17.334	
7,400.0	6,998.0	7,400.9	7,154.6	31.7	22.4	104.56	844.0	-28.3	681.0	640.7	40.25	16.921	
7,500.0	7,029.2	7,532.8	7,200.4	31.7	22.4	104.89	844.0	95.2	681.9	639.6	42.30	16.121	
7,600.0	7,046.8	7,665.2	7,222.8	31.7	22.8	104.82	844.0	225.5	681.8	636.4	45.35	15.032	
7,700.0	7,051.0	7,778.7	7,225.0	31.9	24.5	104.63	844.0	339.0	681.1	632.3	48.84	13.945	
7,800.0	7,051.0	7,878.7	7,225.0	32.3	26.4	104.63	844.0	439.0	681.1	628.7	52.40	12.999	
7,900.0	7,051.0	7,978.7	7,225.0	32.9	28.4	104.63	844.0	539.0	681.1	624.9	56.25	12.109	
8,000.0	7,051.0	8,078.7	7,225.0	34.0	30.6	104.63	844.0	639.0	681.1	620.8	60.35	11.286	
8,100.0	7,051.0	8,178.7	7,225.0	35.5	32.8	104.63	844.0	739.0	681.1	616.5	64.65	10.535	
8,200.0	7,051.0	8,278.7	7,225.0	37.3	35.2	104.63	844.0	839.0	681.1	612.0	69.11	9.855	
8,300.0	7,051.0	8,378.7	7,225.0	39.3	37.6	104.63	844.0	939.0	681.1	607.4	73.71	9.241	
8,400.0	7,051.0	8,478.7	7,225.0	41.5	40.0	104.63	844.0	1,039.0	681.1	602.7	78.41	8.686	
8,500.0	7,051.0	8,578.7	7,225.0	43.8	42.5	104.63	844.0	1,139.0	681.1	597.9	83.21	8.186	
8,600.0	7,051.0	8,678.7	7,225.0	46.2	45.1	104.63	844.0	1,239.0	681.1	593.0	88.08	7.733	
8,700.0	7,051.0	8,778.7	7,225.0	48.6	47.6	104.63	844.0	1,339.0	681.1	588.1	93.02	7.323	
8,800.0	7,051.0	8,878.7	7,225.0	51.0	50.2	104.63	844.0	1,439.0	681.1	583.1	98.01	6.950	
8,900.0	7,051.0	8,978.7	7,225.0	53.6	52.8	104.63	844.0	1,539.0	681.1	578.1	103.04	6.610	
9,000.0	7,051.0	9,078.7	7,225.0	56.1	55.5	104.63	844.0	1,639.0	681.1	573.0	108.12	6.300	
9,100.0	7,051.0	9,178.7	7,225.0	58.7	58.1	104.63	844.0	1,739.0	681.1	567.9	113.23	6.015	
9,200.0	7,051.0	9,278.7	7,225.0	61.2	60.8	104.63	844.0	1,839.0	681.1	562.8	118.37	5.754	
9,300.0	7,051.0	9,378.7	7,225.0	63.9	63.4	104.63	844.0	1,939.0	681.1	557.6	123.54	5.513	
9,400.0	7,051.0	9,478.7	7,225.0	66.5	66.1	104.63	844.0	2,039.0	681.1	552.4	128.73	5.291	
9,500.0	7,051.0	9,578.7	7,225.0	69.1	68.8	104.63	844.0	2,139.0	681.1	547.2	133.94	5.085	
9,600.0	7,051.0	9,678.7	7,225.0	71.8	71.5	104.63	844.0	2,239.0	681.1	542.0	139.17	4.894	
9,700.0	7,051.0	9,778.7	7,225.0	74.4	74.2	104.63	844.0	2,339.0	681.1	536.7	144.42	4.716	
9,800.0	7,051.0	9,878.7	7,225.0	77.1	76.9	104.63	844.0	2,439.0	681.1	531.4	149.68	4.551	
9,900.0	7,051.0	9,978.7	7,225.0	79.8	79.6	104.63	844.0	2,539.0	681.1	526.2	154.95	4.396	
10,000.0	7,051.0	10,078.7	7,225.0	82.5	82.4	104.63	844.0	2,639.0	681.1	520.9	160.24	4.251	
10,100.0	7,051.0	10,178.7	7,225.0	85.2	85.1	104.63	844.0	2,739.0	681.1	515.6	165.53	4.115	
10,200.0	7,051.0	10,278.7	7,225.0	87.9	87.8	104.63	844.0	2,839.0	681.1	510.3	170.84	3.987	

CC - Min centre to center distance or convergent point, SF - min separation factor, ES - min ellipse separation

SRC Kelly Farms Pad Sec.4-T5N-R66W - SRC Kelly Farms A-4-3CHZ - Wellbore #1 - Plan #1 (5-20-13)													Offset Site Error:	0.0 ft
Survey Program: 0-MWD													Offset Well Error:	0.0 ft
Reference		Offset		Semi Major Axis			Distance							
Measured Depth	Vertical Depth	Measured Depth	Vertical Depth	Reference	Offset	Highside Toolface	Offset Wellbore Centre		Between Centres	Between Ellipses	Minimum Separation	Separation Factor	Warning	
(ft)	(ft)	(ft)	(ft)	(ft)	(ft)	(°)	+N/-S (ft)	+E/-W (ft)	(ft)	(ft)	(ft)			
10,300.0	7,051.0	10,378.7	7,225.0	90.6	90.6	104.63	844.0	2,939.0	681.1	505.0	176.15	3.867		
10,400.0	7,051.0	10,478.7	7,225.0	93.3	93.3	104.63	844.0	3,039.0	681.1	499.6	181.48	3.753		
10,500.0	7,051.0	10,578.7	7,225.0	96.0	96.1	104.63	844.0	3,139.0	681.1	494.3	186.81	3.646		
10,600.0	7,051.0	10,678.7	7,225.0	98.8	98.8	104.63	844.0	3,239.0	681.1	489.0	192.14	3.545		
10,700.0	7,051.0	10,778.7	7,225.0	101.5	101.6	104.63	844.0	3,339.0	681.1	483.6	197.49	3.449		
10,800.0	7,051.0	10,878.7	7,225.0	104.2	104.3	104.63	844.0	3,439.0	681.1	478.3	202.83	3.358		
10,900.0	7,051.0	10,978.7	7,225.0	107.0	107.1	104.63	844.0	3,539.0	681.1	472.9	208.19	3.272		
11,000.0	7,051.0	11,078.7	7,225.0	109.7	109.9	104.63	844.0	3,639.0	681.1	467.6	213.55	3.190		
11,100.0	7,051.0	11,178.7	7,225.0	112.5	112.6	104.63	844.0	3,739.0	681.1	462.2	218.91	3.111		
11,200.0	7,051.0	11,278.7	7,225.0	115.2	115.4	104.63	844.0	3,839.0	681.1	456.8	224.28	3.037		
11,300.0	7,051.0	11,378.7	7,225.0	118.0	118.1	104.63	844.0	3,939.0	681.1	451.5	229.65	2.966		
11,400.0	7,051.0	11,478.7	7,225.0	120.7	120.9	104.63	844.0	4,039.0	681.1	446.1	235.02	2.898		
11,500.0	7,051.0	11,578.7	7,225.0	123.5	123.7	104.63	844.0	4,139.0	681.1	440.7	240.40	2.833		
11,600.0	7,051.0	11,678.7	7,225.0	126.2	126.5	104.63	844.0	4,239.0	681.1	435.3	245.78	2.771		
11,700.0	7,051.0	11,778.7	7,225.0	129.0	129.2	104.63	844.0	4,339.0	681.1	430.0	251.16	2.712		
11,800.0	7,051.0	11,878.7	7,225.0	131.8	132.0	104.63	844.0	4,439.0	681.1	424.6	256.55	2.655		
11,900.0	7,051.0	11,978.7	7,225.0	134.5	134.8	104.63	844.0	4,539.0	681.1	419.2	261.94	2.600		
12,000.0	7,051.0	12,078.7	7,225.0	137.3	137.6	104.63	844.0	4,639.0	681.1	413.8	267.33	2.548		
12,100.0	7,051.0	12,178.7	7,225.0	140.1	140.4	104.63	844.0	4,739.0	681.1	408.4	272.73	2.497		
12,200.0	7,051.0	12,278.7	7,225.0	142.8	143.1	104.63	844.0	4,839.0	681.1	403.0	278.12	2.449		
12,300.0	7,051.0	12,378.7	7,225.0	145.6	145.9	104.63	844.0	4,939.0	681.1	397.6	283.52	2.402		
12,400.0	7,051.0	12,478.7	7,225.0	148.4	148.7	104.63	844.0	5,039.0	681.1	392.2	288.92	2.357		
12,500.0	7,051.0	12,578.7	7,225.0	151.2	151.5	104.63	844.0	5,139.0	681.1	386.8	294.32	2.314		
12,552.4	7,051.0	12,631.1	7,225.0	152.6	152.9	104.63	844.0	5,191.4	681.1	384.0	297.15	2.292		
12,600.0	7,051.0	12,642.1	7,225.0	153.9	153.2	104.63	844.0	5,202.4	682.1	383.4	298.74	2.283 SF		
12,622.9	7,051.0	12,642.1	7,225.0	154.6	153.2	104.63	844.0	5,202.4	683.7	384.4	299.35	2.284		

SRC Kelly Farms Pad Sec.4-T5N-R66W - SRC Northridge 31-4-5NHZ - Wellbore #1 - Plan #1 (5-21-13)												Offset Site Error:	0.0 ft
Survey Program: 0-MWD												Offset Well Error:	0.0 ft
Reference		Offset		Semi Major Axis			Distance						
Measured Depth (ft)	Vertical Depth (ft)	Measured Depth (ft)	Vertical Depth (ft)	Reference (ft)	Offset (ft)	Highside Toolface (°)	Offset Wellbore Centre +N/-S (ft)	+E/-W (ft)	Between Centres (ft)	Between Ellipses (ft)	Minimum Separation (ft)	Separation Factor	Warning
0.0	0.0	0.0	0.0	0.0	0.0	168.67	-22.2	4.5	22.7				
100.0	100.0	100.0	100.0	0.1	0.1	168.67	-22.2	4.5	22.7	22.4	0.22	100.839	
200.0	200.0	200.0	200.0	0.3	0.3	168.67	-22.2	4.5	22.7	22.0	0.67	33.613 CC, ES	
300.0	300.0	300.0	300.0	0.6	0.6	-176.68	-22.2	4.5	24.4	23.3	1.13	21.572	
400.0	399.8	399.8	399.8	0.8	0.8	-177.26	-22.2	4.5	29.6	28.0	1.59	18.604	
500.0	499.5	500.6	500.6	1.0	1.0	-179.24	-20.5	5.0	36.8	34.8	2.05	17.971	
600.0	598.7	601.5	601.3	1.3	1.2	177.04	-15.4	6.5	44.6	42.1	2.50	17.813	
700.0	697.5	702.4	701.8	1.7	1.5	172.47	-7.0	9.0	53.2	50.2	2.97	17.902	
800.0	795.6	803.3	802.0	2.0	1.8	167.59	4.9	12.6	62.9	59.4	3.47	18.121	
900.0	893.1	904.2	901.6	2.5	2.1	162.72	20.2	17.2	73.8	69.8	4.02	18.360	
1,000.0	989.6	1,004.7	1,000.3	2.9	2.4	158.10	38.6	22.7	86.3	81.6	4.65	18.555	
1,100.0	1,085.5	1,103.5	1,097.0	3.5	2.8	154.84	57.9	28.5	101.0	95.7	5.36	18.857	
1,200.0	1,181.2	1,202.3	1,193.6	4.0	3.2	152.51	77.2	34.3	116.2	110.1	6.11	19.030	
1,300.0	1,276.9	1,301.0	1,290.3	4.6	3.6	150.72	96.5	40.1	131.5	124.7	6.88	19.109	
1,400.0	1,372.7	1,399.7	1,387.0	5.2	4.0	149.31	115.8	45.9	147.0	139.3	7.68	19.137	
1,500.0	1,468.4	1,498.5	1,483.6	5.7	4.4	148.16	135.1	51.7	162.5	154.0	8.49	19.136	
1,600.0	1,564.1	1,597.2	1,580.3	6.3	4.8	147.22	154.4	57.5	178.1	168.7	9.31	19.119	
1,700.0	1,659.9	1,696.0	1,677.0	6.9	5.2	146.42	173.7	63.2	193.7	183.5	10.14	19.093	
1,800.0	1,755.6	1,794.7	1,773.6	7.5	5.7	145.75	193.0	69.0	209.3	198.3	10.98	19.063	
1,900.0	1,851.3	1,893.5	1,870.3	8.0	6.1	145.16	212.3	74.8	225.0	213.1	11.82	19.031	
2,000.0	1,947.1	1,992.2	1,967.0	8.6	6.5	144.66	231.6	80.6	240.6	228.0	12.66	19.000	
2,100.0	2,042.8	2,090.9	2,063.6	9.2	6.9	144.22	250.9	86.4	256.3	242.8	13.51	18.968	
2,200.0	2,138.6	2,189.7	2,160.3	9.8	7.4	143.82	270.2	92.2	272.0	257.7	14.36	18.938	
2,300.0	2,234.3	2,288.4	2,256.9	10.4	7.8	143.47	289.5	98.0	287.7	272.5	15.22	18.910	
2,400.0	2,330.0	2,387.2	2,353.6	11.0	8.2	143.16	308.8	103.8	303.5	287.4	16.07	18.882	
2,500.0	2,425.8	2,485.9	2,450.3	11.5	8.6	142.88	328.1	109.6	319.2	302.3	16.93	18.856	
2,600.0	2,521.5	2,584.7	2,546.9	12.1	9.1	142.62	347.4	115.3	334.9	317.2	17.79	18.832	
2,700.0	2,617.2	2,683.4	2,643.6	12.7	9.5	142.39	366.7	121.1	350.7	332.1	18.65	18.809	
2,800.0	2,713.0	2,782.1	2,740.3	13.3	9.9	142.17	386.0	126.9	366.4	346.9	19.51	18.787	
2,900.0	2,808.7	2,880.9	2,836.9	13.9	10.3	141.98	405.3	132.7	382.2	361.8	20.37	18.767	
3,000.0	2,904.5	2,979.6	2,933.6	14.5	10.8	141.80	424.6	138.5	398.0	376.7	21.23	18.747	
3,100.0	3,000.2	3,078.4	3,030.3	15.1	11.2	141.63	443.9	144.3	413.7	391.6	22.09	18.729	
3,200.0	3,095.9	3,177.1	3,126.9	15.6	11.6	141.48	463.2	150.1	429.5	406.5	22.95	18.712	
3,300.0	3,191.7	3,275.9	3,223.6	16.2	12.1	141.33	482.5	155.9	445.3	421.5	23.82	18.696	
3,400.0	3,287.4	3,374.6	3,320.3	16.8	12.5	141.20	501.8	161.7	461.0	436.4	24.68	18.680	
3,500.0	3,383.1	3,473.3	3,416.9	17.4	12.9	141.08	521.1	167.4	476.8	451.3	25.55	18.666	
3,600.0	3,478.9	3,572.1	3,513.6	18.0	13.4	140.96	540.4	173.2	492.6	466.2	26.41	18.652	
3,700.0	3,574.6	3,670.8	3,610.3	18.6	13.8	140.85	559.7	179.0	508.4	481.1	27.28	18.639	
3,800.0	3,670.3	3,769.6	3,706.9	19.2	14.2	140.75	579.0	184.8	524.2	496.0	28.14	18.626	
3,900.0	3,766.1	3,868.3	3,803.6	19.7	14.7	140.65	598.3	190.6	539.9	510.9	29.01	18.614	
4,000.0	3,861.8	3,967.1	3,900.3	20.3	15.1	140.56	617.6	196.4	555.7	525.9	29.87	18.603	
4,100.0	3,957.6	4,065.8	3,996.9	20.9	15.5	140.47	636.9	202.2	571.5	540.8	30.74	18.592	
4,200.0	4,053.3	4,164.5	4,093.6	21.5	15.9	140.39	656.2	208.0	587.3	555.7	31.61	18.582	
4,300.0	4,149.0	4,263.3	4,190.3	22.1	16.4	140.31	675.5	213.8	603.1	570.6	32.47	18.572	
4,400.0	4,244.8	4,362.0	4,286.9	22.7	16.8	140.24	694.8	219.5	618.9	585.5	33.34	18.563	
4,500.0	4,340.5	4,460.8	4,383.6	23.3	17.2	140.17	714.1	225.3	634.7	600.5	34.21	18.554	
4,600.0	4,436.2	4,559.5	4,480.3	23.8	17.7	140.10	733.4	231.1	650.5	615.4	35.07	18.545	
4,700.0	4,532.0	4,658.2	4,576.9	24.4	18.1	140.04	752.7	236.9	666.2	630.3	35.94	18.537	
4,800.0	4,627.7	4,757.0	4,673.6	25.0	18.5	139.98	771.9	242.7	682.0	645.2	36.81	18.529	
4,900.0	4,723.4	4,855.7	4,770.3	25.6	19.0	139.92	791.2	248.5	697.8	660.2	37.68	18.521	
5,000.0	4,819.2	4,954.5	4,866.9	26.2	19.4	139.87	810.5	254.3	713.6	675.1	38.55	18.514	
5,100.0	4,914.9	5,053.2	4,963.6	26.8	19.8	139.82	829.8	260.1	729.4	690.0	39.41	18.507	

Company:	Synergy Resources	Local Co-ordinate Reference:	Well SRC Kelly Farms 21-4-3NHZ
Project:	SEC.4-T5N-R66W	TVD Reference:	WELL @ 4765.0ft (Original Well Elev)
Reference Site:	SRC Kelly Farms Pad Sec.4-T5N-R66W	MD Reference:	WELL @ 4765.0ft (Original Well Elev)
Site Error:	0.0ft	North Reference:	True
Reference Well:	SRC Kelly Farms 21-4-3NHZ	Survey Calculation Method:	Minimum Curvature
Well Error:	0.0ft	Output errors are at	2.00 sigma
Reference Wellbore	Wellbore #1	Database:	Landmark
Reference Design:	Plan #1 (5-20-13)	Offset TVD Reference:	Offset Datum

Offset Design		SRC Kelly Farms Pad Sec.4-T5N-R66W - SRC Northridge 31-4-5NHZ - Wellbore #1 - Plan #1 (5-21-13)										Offset Site Error:		0.0 ft
Survey Program: 0-MWD												Offset Well Error:		0.0 ft
Reference		Offset		Semi Major Axis			Distance							Warning
Measured Depth (ft)	Vertical Depth (ft)	Measured Depth (ft)	Vertical Depth (ft)	Reference (ft)	Offset (ft)	Highside Toolface (°)	Offset Wellbore Centre +N/-S (ft)	+E/-W (ft)	Between Centres (ft)	Between Ellipses (ft)	Minimum Separation (ft)	Separation Factor		
5,200.0	5,010.7	5,152.0	5,060.2	27.4	20.3	139.77	849.1	265.9	745.2	704.9	40.28	18.500		
5,300.0	5,106.4	5,250.7	5,156.9	28.0	20.7	139.72	868.4	271.7	761.0	719.9	41.15	18.493		
5,400.0	5,202.1	5,349.4	5,253.6	28.5	21.1	139.67	887.7	277.4	776.8	734.8	42.02	18.487		
5,500.0	5,297.9	5,448.2	5,350.2	29.1	21.6	139.63	907.0	283.2	792.6	749.7	42.89	18.481		
5,600.0	5,393.6	5,544.3	5,444.3	29.7	22.0	139.64	925.7	288.8	808.4	764.7	43.72	18.490		
5,700.0	5,490.1	5,634.8	5,533.4	30.1	22.3	139.84	941.1	293.5	823.1	778.8	44.37	18.551		
5,800.0	5,587.3	5,725.4	5,623.1	30.5	22.5	140.07	953.9	297.3	836.2	791.3	44.91	18.619		
5,900.0	5,685.4	5,816.1	5,713.1	30.8	22.7	140.32	964.0	300.3	847.7	802.3	45.37	18.685		
6,000.0	5,784.1	5,906.7	5,803.4	31.1	22.9	140.60	971.3	302.5	857.5	811.8	45.73	18.751		
6,100.0	5,883.2	6,000.0	5,896.5	31.4	23.1	140.89	976.0	303.9	865.7	819.7	46.01	18.817		
6,200.0	5,982.8	6,087.9	5,984.4	31.6	23.2	141.20	977.7	304.4	872.3	826.1	46.18	18.887		
6,300.0	6,082.6	6,186.1	6,082.6	31.8	23.3	141.49	977.8	304.5	876.8	830.5	46.32	18.930		
6,400.0	6,182.6	6,286.1	6,182.6	31.9	23.4	141.61	977.8	304.5	878.7	832.2	46.47	18.909		
6,500.0	6,282.6	6,386.1	6,282.6	31.9	23.6	126.71	977.8	304.5	878.7	834.7	43.96	19.991		
6,600.0	6,382.5	6,486.0	6,382.5	32.0	23.7	36.83	977.8	304.5	877.4	830.7	46.68	18.798		
6,700.0	6,481.5	6,800.0	6,693.2	32.1	24.0	41.15	979.1	271.9	866.4	821.7	44.63	19.414		
6,800.0	6,577.7	7,473.2	7,157.7	32.1	24.3	93.40	997.5	-180.4	789.5	750.3	39.20	20.141		
6,900.0	6,669.1	7,442.5	7,147.2	32.0	24.2	98.61	996.4	-151.6	716.1	676.0	40.03	17.887		
7,000.0	6,754.0	7,399.1	7,130.3	32.0	24.1	100.74	994.7	-111.7	650.6	610.8	39.81	16.345		
7,100.0	6,830.7	7,352.5	7,109.4	31.9	24.1	100.97	993.0	-70.1	595.6	556.5	39.15	15.213		
7,200.0	6,897.8	7,304.6	7,085.2	31.8	24.0	99.64	991.4	-28.8	553.6	515.1	38.49	14.384		
7,300.0	6,953.9	7,256.0	7,057.9	31.7	24.0	96.90	989.7	11.3	526.6	488.5	38.11	13.816		
7,400.0	6,998.0	7,207.0	7,027.6	31.7	24.0	92.88	988.2	49.8	515.7	477.6	38.16	13.516		
7,418.6	7,004.8	7,197.9	7,021.7	31.7	24.0	92.01	987.9	56.7	515.4	477.2	38.22	13.488 SF		
7,500.0	7,029.2	7,157.8	6,994.6	31.7	24.0	87.77	986.7	86.3	520.3	481.9	38.45	13.532		
7,600.0	7,046.8	7,108.4	6,959.1	31.7	24.0	81.82	985.3	120.6	538.3	499.7	38.66	13.924		
7,700.0	7,051.0	7,059.1	6,921.4	31.9	24.0	75.98	984.0	152.2	566.6	527.9	38.68	14.648		
7,800.0	7,051.0	7,015.3	6,886.1	32.3	24.0	72.41	982.9	178.2	604.7	565.4	39.35	15.367		
7,900.0	7,051.0	6,978.1	6,854.9	32.9	24.0	69.37	982.1	198.5	652.5	612.3	40.22	16.222		
8,000.0	7,051.0	6,950.0	6,830.7	34.0	24.0	67.10	981.5	212.7	708.7	667.3	41.38	17.127		
8,100.0	7,051.0	6,918.7	6,803.1	35.5	24.0	64.60	980.9	227.4	771.8	729.4	42.44	18.185		
8,200.0	7,051.0	6,900.0	6,786.3	37.3	24.0	63.13	980.6	235.6	840.8	796.9	43.92	19.147		
8,300.0	7,051.0	6,874.0	6,762.6	39.3	24.0	61.12	980.1	246.3	914.5	869.4	45.14	20.261		
8,400.0	7,051.0	6,850.0	6,740.4	41.5	24.0	59.31	979.8	255.4	992.1	945.7	46.39	21.384		

Company:	Synergy Resources	Local Co-ordinate Reference:	Well SRC Kelly Farms 21-4-3NHZ
Project:	SEC.4-T5N-R66W	TVD Reference:	WELL @ 4765.0ft (Original Well Elev)
Reference Site:	SRC Kelly Farms Pad Sec.4-T5N-R66W	MD Reference:	WELL @ 4765.0ft (Original Well Elev)
Site Error:	0.0ft	North Reference:	True
Reference Well:	SRC Kelly Farms 21-4-3NHZ	Survey Calculation Method:	Minimum Curvature
Well Error:	0.0ft	Output errors are at	2.00 sigma
Reference Wellbore	Wellbore #1	Database:	Landmark
Reference Design:	Plan #1 (5-20-13)	Offset TVD Reference:	Offset Datum

Reference Depths are relative to WELL @ 4765.0ft (Original Well Elev) Coordinates are relative to: SRC Kelly Farms 21-4-3NHZ
 Offset Depths are relative to Offset Datum Coordinate System is US State Plane 1983, Colorado Northern Zone
 Central Meridian is -105.500000 ° Grid Convergence at Surface is: 0.46°



Company:	Synergy Resources	Local Co-ordinate Reference:	Well SRC Kelly Farms 21-4-3NHZ
Project:	SEC.4-T5N-R66W	TVD Reference:	WELL @ 4765.0ft (Original Well Elev)
Reference Site:	SRC Kelly Farms Pad Sec.4-T5N-R66W	MD Reference:	WELL @ 4765.0ft (Original Well Elev)
Site Error:	0.0ft	North Reference:	True
Reference Well:	SRC Kelly Farms 21-4-3NHZ	Survey Calculation Method:	Minimum Curvature
Well Error:	0.0ft	Output errors are at	2.00 sigma
Reference Wellbore	Wellbore #1	Database:	Landmark
Reference Design:	Plan #1 (5-20-13)	Offset TVD Reference:	Offset Datum

Reference Depths are relative to WELL @ 4765.0ft (Original Well Elev) Coordinates are relative to: SRC Kelly Farms 21-4-3NHZ
Offset Depths are relative to Offset Datum Coordinate System is US State Plane 1983, Colorado Northern Zone
Central Meridian is -105.500000 ° Grid Convergence at Surface is: 0.46°

