

Synergy Resources

Well Name: **SRC Kelly Farms A-4-3CHZ**

Surface Location: SRC Kelly Farms Pad Sec.4-T5N-R66W
North American Datum 1983 , US State Plane 1983 , Colorado Northern Zone

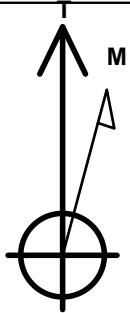
Ground Elevation: 4754.0

+N/-S	+E/-W	Northing	Easting	Latitude	Longitude	Slot
0.0	0.0	1400913.38	3199098.91	40.431705	-104.784787	

Original Well Elev WELL @ 4767.0ft (Original Well Elev)

WELLBORE TARGET DETAILS

Name	TVD	+N/-S	+E/-W	Shape
SHL 2063'FNL & 2311'FWL, Sec.4	1.0	0.0	0.0	Point
BHL 1190'FNL & 2146'FWL, Sec. 3	7225.0	874.2	5237.2	Point



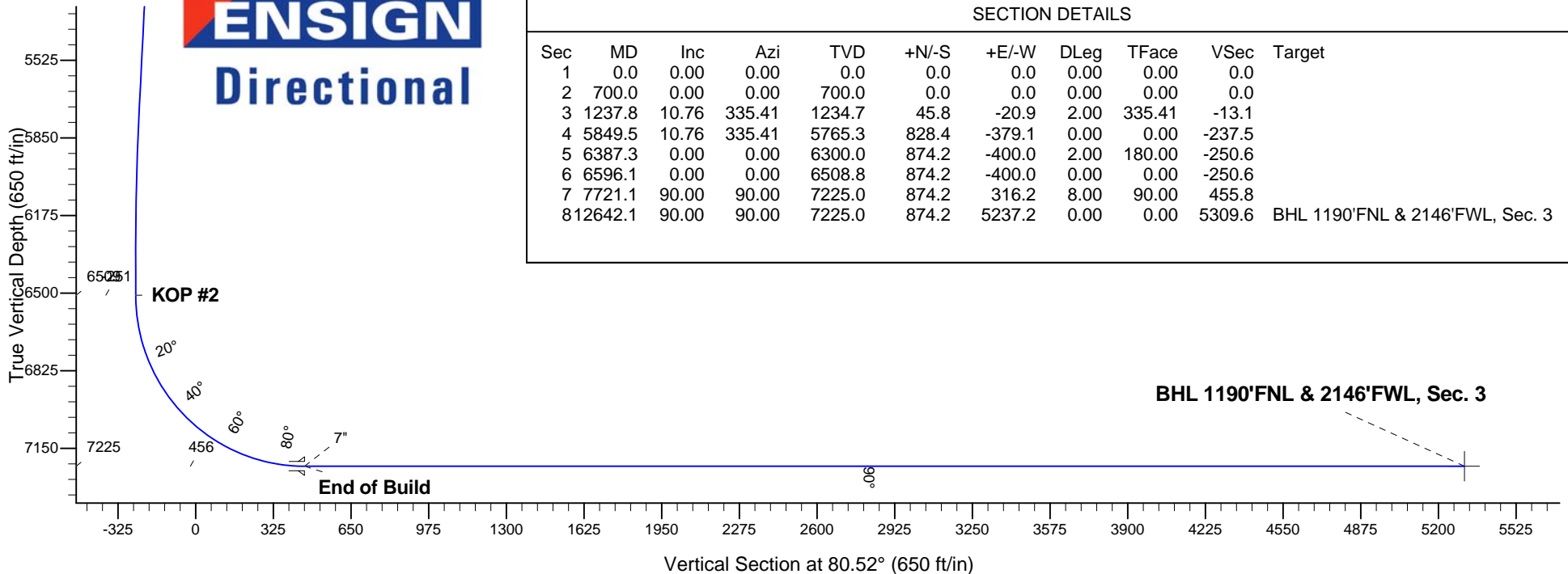
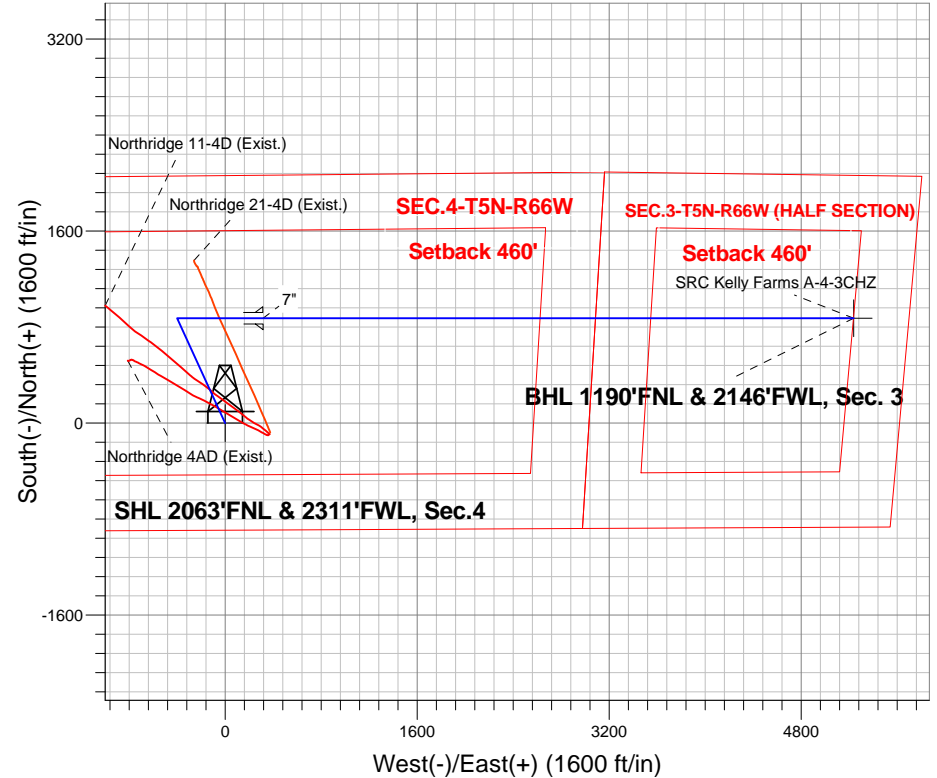
Azimuths to True North
Magnetic North: 8.62°

Magnetic Field
Strength: 52943.1nT
Dip Angle: 67.01°
Date: 5/20/2013
Model: IGRF2010

SRC Kelly Farms Pad Sec.4-T5N-R66W
SRC Kelly Farms A-4-3CHZ
Plan #1 (5-20-13)
13:59, May 29 2013

ANNOTATIONS

TVD	MD	Annotation
700.0	700.0	KOP
6508.8	6596.1	KOP #2
7225.0	7721.1	End of Build





Synergy Resources

SEC.4-T5N-R66W

SRC Kelly Farms Pad Sec.4-T5N-R66W

SRC Kelly Farms A-4-3CHZ

Wellbore #1

Plan: Plan #1 (5-20-13)

Standard Planning Report

29 May, 2013

Plan Sections										
Measured Depth (ft)	Inclination (°)	Azimuth (°)	Vertical Depth (ft)	+N/-S (ft)	+E/-W (ft)	Dogleg Rate (°/100ft)	Build Rate (°/100ft)	Turn Rate (°/100ft)	TFO (°)	Target
0.0	0.00	0.00	0.0	0.0	0.0	0.00	0.00	0.00	0.00	
700.0	0.00	0.00	700.0	0.0	0.0	0.00	0.00	0.00	0.00	
1,237.8	10.76	335.41	1,234.7	45.8	-20.9	2.00	2.00	0.00	335.41	
5,849.5	10.76	335.41	5,765.3	828.4	-379.1	0.00	0.00	0.00	0.00	
6,387.3	0.00	0.00	6,300.0	874.2	-400.0	2.00	-2.00	0.00	180.00	
6,596.1	0.00	0.00	6,508.8	874.2	-400.0	0.00	0.00	0.00	0.00	
7,721.1	90.00	90.00	7,225.0	874.2	316.2	8.00	8.00	0.00	90.00	
12,642.1	90.00	90.00	7,225.0	874.2	5,237.2	0.00	0.00	0.00	0.00	BHL 1190'FNL & 21

Database:	Landmark	Local Co-ordinate Reference:	Well SRC Kelly Farms A-4-3CHZ
Company:	Synergy Resources	TVD Reference:	WELL @ 4767.0ft (Original Well Elev)
Project:	SEC.4-T5N-R66W	MD Reference:	WELL @ 4767.0ft (Original Well Elev)
Site:	SRC Kelly Farms Pad Sec.4-T5N-R66W	North Reference:	True
Well:	SRC Kelly Farms A-4-3CHZ	Survey Calculation Method:	Minimum Curvature
Wellbore:	Wellbore #1		
Design:	Plan #1 (5-20-13)		

Planned Survey									
Measured Depth (ft)	Inclination (°)	Azimuth (°)	Vertical Depth (ft)	+N/-S (ft)	+E/-W (ft)	Vertical Section (ft)	Dogleg Rate (°/100ft)	Build Rate (°/100ft)	Turn Rate (°/100ft)
0.0	0.00	0.00	0.0	0.0	0.0	0.0	0.00	0.00	0.00
1.0	0.00	0.00	1.0	0.0	0.0	0.0	0.00	0.00	0.00
SHL 2063'FNL & 2311'FWL, Sec.4									
100.0	0.00	0.00	100.0	0.0	0.0	0.0	0.00	0.00	0.00
200.0	0.00	0.00	200.0	0.0	0.0	0.0	0.00	0.00	0.00
300.0	0.00	0.00	300.0	0.0	0.0	0.0	0.00	0.00	0.00
400.0	0.00	0.00	400.0	0.0	0.0	0.0	0.00	0.00	0.00
500.0	0.00	0.00	500.0	0.0	0.0	0.0	0.00	0.00	0.00
600.0	0.00	0.00	600.0	0.0	0.0	0.0	0.00	0.00	0.00
700.0	0.00	0.00	700.0	0.0	0.0	0.0	0.00	0.00	0.00
KOP									
800.0	2.00	335.41	800.0	1.6	-0.7	-0.5	2.00	2.00	0.00
900.0	4.00	335.41	899.8	6.3	-2.9	-1.8	2.00	2.00	0.00
1,000.0	6.00	335.41	999.5	14.3	-6.5	-4.1	2.00	2.00	0.00
1,100.0	8.00	335.41	1,098.7	25.4	-11.6	-7.3	2.00	2.00	0.00
1,200.0	10.00	335.41	1,197.5	39.6	-18.1	-11.3	2.00	2.00	0.00
1,237.8	10.76	335.41	1,234.7	45.8	-20.9	-13.1	2.00	2.00	0.00
1,300.0	10.76	335.41	1,295.8	56.3	-25.8	-16.1	0.00	0.00	0.00
1,400.0	10.76	335.41	1,394.0	73.3	-33.5	-21.0	0.00	0.00	0.00
1,500.0	10.76	335.41	1,492.2	90.3	-41.3	-25.9	0.00	0.00	0.00
1,600.0	10.76	335.41	1,590.5	107.2	-49.1	-30.7	0.00	0.00	0.00
1,700.0	10.76	335.41	1,688.7	124.2	-56.8	-35.6	0.00	0.00	0.00
1,800.0	10.76	335.41	1,787.0	141.2	-64.6	-40.5	0.00	0.00	0.00
1,900.0	10.76	335.41	1,885.2	158.1	-72.4	-45.3	0.00	0.00	0.00
2,000.0	10.76	335.41	1,983.5	175.1	-80.1	-50.2	0.00	0.00	0.00
2,100.0	10.76	335.41	2,081.7	192.1	-87.9	-55.1	0.00	0.00	0.00
2,200.0	10.76	335.41	2,179.9	209.1	-95.7	-59.9	0.00	0.00	0.00
2,300.0	10.76	335.41	2,278.2	226.0	-103.4	-64.8	0.00	0.00	0.00
2,400.0	10.76	335.41	2,376.4	243.0	-111.2	-69.7	0.00	0.00	0.00
2,500.0	10.76	335.41	2,474.7	260.0	-119.0	-74.5	0.00	0.00	0.00
2,600.0	10.76	335.41	2,572.9	276.9	-126.7	-79.4	0.00	0.00	0.00
2,700.0	10.76	335.41	2,671.2	293.9	-134.5	-84.3	0.00	0.00	0.00
2,800.0	10.76	335.41	2,769.4	310.9	-142.3	-89.1	0.00	0.00	0.00
2,900.0	10.76	335.41	2,867.6	327.9	-150.0	-94.0	0.00	0.00	0.00
3,000.0	10.76	335.41	2,965.9	344.8	-157.8	-98.9	0.00	0.00	0.00
3,100.0	10.76	335.41	3,064.1	361.8	-165.5	-103.7	0.00	0.00	0.00
3,200.0	10.76	335.41	3,162.4	378.8	-173.3	-108.6	0.00	0.00	0.00
3,300.0	10.76	335.41	3,260.6	395.7	-181.1	-113.5	0.00	0.00	0.00
3,400.0	10.76	335.41	3,358.9	412.7	-188.8	-118.3	0.00	0.00	0.00
3,500.0	10.76	335.41	3,457.1	429.7	-196.6	-123.2	0.00	0.00	0.00
3,600.0	10.76	335.41	3,555.3	446.7	-204.4	-128.0	0.00	0.00	0.00
3,700.0	10.76	335.41	3,653.6	463.6	-212.1	-132.9	0.00	0.00	0.00
3,800.0	10.76	335.41	3,751.8	480.6	-219.9	-137.8	0.00	0.00	0.00
3,900.0	10.76	335.41	3,850.1	497.6	-227.7	-142.6	0.00	0.00	0.00
4,000.0	10.76	335.41	3,948.3	514.5	-235.4	-147.5	0.00	0.00	0.00
4,100.0	10.76	335.41	4,046.6	531.5	-243.2	-152.4	0.00	0.00	0.00
4,200.0	10.76	335.41	4,144.8	548.5	-251.0	-157.2	0.00	0.00	0.00
4,300.0	10.76	335.41	4,243.0	565.5	-258.7	-162.1	0.00	0.00	0.00
4,400.0	10.76	335.41	4,341.3	582.4	-266.5	-167.0	0.00	0.00	0.00
4,500.0	10.76	335.41	4,439.5	599.4	-274.3	-171.8	0.00	0.00	0.00
4,600.0	10.76	335.41	4,537.8	616.4	-282.0	-176.7	0.00	0.00	0.00
4,700.0	10.76	335.41	4,636.0	633.3	-289.8	-181.6	0.00	0.00	0.00
4,800.0	10.76	335.41	4,734.3	650.3	-297.6	-186.4	0.00	0.00	0.00
4,900.0	10.76	335.41	4,832.5	667.3	-305.3	-191.3	0.00	0.00	0.00

Database:	Landmark	Local Co-ordinate Reference:	Well SRC Kelly Farms A-4-3CHZ
Company:	Synergy Resources	TVD Reference:	WELL @ 4767.0ft (Original Well Elev)
Project:	SEC.4-T5N-R66W	MD Reference:	WELL @ 4767.0ft (Original Well Elev)
Site:	SRC Kelly Farms Pad Sec.4-T5N-R66W	North Reference:	True
Well:	SRC Kelly Farms A-4-3CHZ	Survey Calculation Method:	Minimum Curvature
Wellbore:	Wellbore #1		
Design:	Plan #1 (5-20-13)		

Planned Survey									
Measured Depth (ft)	Inclination (°)	Azimuth (°)	Vertical Depth (ft)	+N/-S (ft)	+E/-W (ft)	Vertical Section (ft)	Dogleg Rate (°/100ft)	Build Rate (°/100ft)	Turn Rate (°/100ft)
5,000.0	10.76	335.41	4,930.7	684.2	-313.1	-196.2	0.00	0.00	0.00
5,100.0	10.76	335.41	5,029.0	701.2	-320.9	-201.0	0.00	0.00	0.00
5,200.0	10.76	335.41	5,127.2	718.2	-328.6	-205.9	0.00	0.00	0.00
5,300.0	10.76	335.41	5,225.5	735.2	-336.4	-210.8	0.00	0.00	0.00
5,400.0	10.76	335.41	5,323.7	752.1	-344.2	-215.6	0.00	0.00	0.00
5,500.0	10.76	335.41	5,422.0	769.1	-351.9	-220.5	0.00	0.00	0.00
5,600.0	10.76	335.41	5,520.2	786.1	-359.7	-225.4	0.00	0.00	0.00
5,700.0	10.76	335.41	5,618.4	803.0	-367.4	-230.2	0.00	0.00	0.00
5,800.0	10.76	335.41	5,716.7	820.0	-375.2	-235.1	0.00	0.00	0.00
5,849.5	10.76	335.41	5,765.3	828.4	-379.1	-237.5	0.00	0.00	0.00
5,900.0	9.75	335.41	5,815.0	836.6	-382.8	-239.8	2.00	-2.00	0.00
6,000.0	7.75	335.41	5,913.8	850.4	-389.1	-243.8	2.00	-2.00	0.00
6,100.0	5.75	335.41	6,013.1	861.1	-394.0	-246.9	2.00	-2.00	0.00
6,200.0	3.75	335.41	6,112.8	868.6	-397.5	-249.0	2.00	-2.00	0.00
6,300.0	1.75	335.41	6,212.7	873.0	-399.4	-250.3	2.00	-2.00	0.00
6,387.3	0.00	0.00	6,300.0	874.2	-400.0	-250.6	2.00	-2.00	0.00
6,400.0	0.00	0.00	6,312.7	874.2	-400.0	-250.6	0.00	0.00	0.00
6,500.0	0.00	0.00	6,412.7	874.2	-400.0	-250.6	0.00	0.00	0.00
6,596.1	0.00	0.00	6,508.8	874.2	-400.0	-250.6	0.00	0.00	0.00
KOP #2									
6,600.0	0.31	90.00	6,512.7	874.2	-400.0	-250.6	7.93	7.93	0.00
6,700.0	8.31	90.00	6,612.3	874.2	-392.5	-243.2	8.00	8.00	0.00
6,800.0	16.31	90.00	6,709.9	874.2	-371.2	-222.2	8.00	8.00	0.00
6,900.0	24.31	90.00	6,803.6	874.2	-336.5	-188.0	8.00	8.00	0.00
7,000.0	32.31	90.00	6,891.6	874.2	-289.1	-141.2	8.00	8.00	0.00
7,100.0	40.31	90.00	6,972.1	874.2	-230.0	-82.9	8.00	8.00	0.00
7,200.0	48.31	90.00	7,043.6	874.2	-160.2	-14.0	8.00	8.00	0.00
7,300.0	56.31	90.00	7,104.7	874.2	-81.1	63.9	8.00	8.00	0.00
7,400.0	64.31	90.00	7,154.2	874.2	5.7	149.6	8.00	8.00	0.00
7,500.0	72.31	90.00	7,191.1	874.2	98.6	241.1	8.00	8.00	0.00
7,600.0	80.31	90.00	7,214.8	874.2	195.6	336.9	8.00	8.00	0.00
7,700.0	88.31	90.00	7,224.7	874.2	295.1	435.0	8.00	8.00	0.00
7,721.1	90.00	90.00	7,225.0	874.2	316.2	455.8	8.00	8.00	0.00
End of Build - 7"									
7,800.0	90.00	90.00	7,225.0	874.2	395.1	533.6	0.00	0.00	0.00
7,900.0	90.00	90.00	7,225.0	874.2	495.1	632.2	0.00	0.00	0.00
8,000.0	90.00	90.00	7,225.0	874.2	595.1	730.9	0.00	0.00	0.00
8,100.0	90.00	90.00	7,225.0	874.2	695.1	829.5	0.00	0.00	0.00
8,200.0	90.00	90.00	7,225.0	874.2	795.1	928.1	0.00	0.00	0.00
8,300.0	90.00	90.00	7,225.0	874.2	895.1	1,026.8	0.00	0.00	0.00
8,400.0	90.00	90.00	7,225.0	874.2	995.1	1,125.4	0.00	0.00	0.00
8,500.0	90.00	90.00	7,225.0	874.2	1,095.1	1,224.0	0.00	0.00	0.00
8,600.0	90.00	90.00	7,225.0	874.2	1,195.1	1,322.7	0.00	0.00	0.00
8,700.0	90.00	90.00	7,225.0	874.2	1,295.1	1,421.3	0.00	0.00	0.00
8,800.0	90.00	90.00	7,225.0	874.2	1,395.1	1,520.0	0.00	0.00	0.00
8,900.0	90.00	90.00	7,225.0	874.2	1,495.1	1,618.6	0.00	0.00	0.00
9,000.0	90.00	90.00	7,225.0	874.2	1,595.1	1,717.2	0.00	0.00	0.00
9,100.0	90.00	90.00	7,225.0	874.2	1,695.1	1,815.9	0.00	0.00	0.00
9,200.0	90.00	90.00	7,225.0	874.2	1,795.1	1,914.5	0.00	0.00	0.00
9,300.0	90.00	90.00	7,225.0	874.2	1,895.1	2,013.1	0.00	0.00	0.00
9,400.0	90.00	90.00	7,225.0	874.2	1,995.1	2,111.8	0.00	0.00	0.00
9,500.0	90.00	90.00	7,225.0	874.2	2,095.1	2,210.4	0.00	0.00	0.00
9,600.0	90.00	90.00	7,225.0	874.2	2,195.1	2,309.0	0.00	0.00	0.00
9,700.0	90.00	90.00	7,225.0	874.2	2,295.1	2,407.7	0.00	0.00	0.00

Planned Survey										
Measured Depth (ft)	Inclination (°)	Azimuth (°)	Vertical Depth (ft)	+N-S (ft)	+E-W (ft)	Vertical Section (ft)	Dogleg Rate (°/100ft)	Build Rate (°/100ft)	Turn Rate (°/100ft)	
9,800.0	90.00	90.00	7,225.0	874.2	2,395.1	2,506.3	0.00	0.00	0.00	
9,900.0	90.00	90.00	7,225.0	874.2	2,495.1	2,604.9	0.00	0.00	0.00	
10,000.0	90.00	90.00	7,225.0	874.2	2,595.1	2,703.6	0.00	0.00	0.00	
10,100.0	90.00	90.00	7,225.0	874.2	2,695.1	2,802.2	0.00	0.00	0.00	
10,200.0	90.00	90.00	7,225.0	874.2	2,795.1	2,900.8	0.00	0.00	0.00	
10,300.0	90.00	90.00	7,225.0	874.2	2,895.1	2,999.5	0.00	0.00	0.00	
10,400.0	90.00	90.00	7,225.0	874.2	2,995.1	3,098.1	0.00	0.00	0.00	
10,500.0	90.00	90.00	7,225.0	874.2	3,095.1	3,196.8	0.00	0.00	0.00	
10,600.0	90.00	90.00	7,225.0	874.2	3,195.1	3,295.4	0.00	0.00	0.00	
10,700.0	90.00	90.00	7,225.0	874.2	3,295.1	3,394.0	0.00	0.00	0.00	
10,800.0	90.00	90.00	7,225.0	874.2	3,395.1	3,492.7	0.00	0.00	0.00	
10,900.0	90.00	90.00	7,225.0	874.2	3,495.1	3,591.3	0.00	0.00	0.00	
11,000.0	90.00	90.00	7,225.0	874.2	3,595.1	3,689.9	0.00	0.00	0.00	
11,100.0	90.00	90.00	7,225.0	874.2	3,695.1	3,788.6	0.00	0.00	0.00	
11,200.0	90.00	90.00	7,225.0	874.2	3,795.1	3,887.2	0.00	0.00	0.00	
11,300.0	90.00	90.00	7,225.0	874.2	3,895.1	3,985.8	0.00	0.00	0.00	
11,400.0	90.00	90.00	7,225.0	874.2	3,995.1	4,084.5	0.00	0.00	0.00	
11,500.0	90.00	90.00	7,225.0	874.2	4,095.1	4,183.1	0.00	0.00	0.00	
11,600.0	90.00	90.00	7,225.0	874.2	4,195.1	4,281.7	0.00	0.00	0.00	
11,700.0	90.00	90.00	7,225.0	874.2	4,295.1	4,380.4	0.00	0.00	0.00	
11,800.0	90.00	90.00	7,225.0	874.2	4,395.1	4,479.0	0.00	0.00	0.00	
11,900.0	90.00	90.00	7,225.0	874.2	4,495.1	4,577.6	0.00	0.00	0.00	
12,000.0	90.00	90.00	7,225.0	874.2	4,595.1	4,676.3	0.00	0.00	0.00	
12,100.0	90.00	90.00	7,225.0	874.2	4,695.1	4,774.9	0.00	0.00	0.00	
12,200.0	90.00	90.00	7,225.0	874.2	4,795.1	4,873.6	0.00	0.00	0.00	
12,300.0	90.00	90.00	7,225.0	874.2	4,895.1	4,972.2	0.00	0.00	0.00	
12,400.0	90.00	90.00	7,225.0	874.2	4,995.1	5,070.8	0.00	0.00	0.00	
12,500.0	90.00	90.00	7,225.0	874.2	5,095.1	5,169.5	0.00	0.00	0.00	
12,600.0	90.00	90.00	7,225.0	874.2	5,195.1	5,268.1	0.00	0.00	0.00	
12,642.1	90.00	90.00	7,225.0	874.2	5,237.2	5,309.6	0.00	0.00	0.00	
BHL 1190'FNL & 2146'FWL, Sec. 3										

Casing Points					
	Measured Depth (ft)	Vertical Depth (ft)		Name	
				Casing Diameter (")	Hole Diameter (")
	7,721.1	7,225.0	7"	7	7-1/2

Database:	Landmark	Local Co-ordinate Reference:	Well SRC Kelly Farms A-4-3CHZ
Company:	Synergy Resources	TVD Reference:	WELL @ 4767.0ft (Original Well Elev)
Project:	SEC.4-T5N-R66W	MD Reference:	WELL @ 4767.0ft (Original Well Elev)
Site:	SRC Kelly Farms Pad Sec.4-T5N-R66W	North Reference:	True
Well:	SRC Kelly Farms A-4-3CHZ	Survey Calculation Method:	Minimum Curvature
Wellbore:	Wellbore #1		
Design:	Plan #1 (5-20-13)		

Plan Annotations					
Measured Depth (ft)	Vertical Depth (ft)	Local Coordinates		Comment	
		+N/-S (ft)	+E/-W (ft)		
700.0	700.0	0.0	0.0	KOP	
6,596.1	6,508.8	874.2	-400.0	KOP #2	
7,721.1	7,225.0	874.2	316.2	End of Build	



Synergy Resources

SEC.4-T5N-R66W

SRC Kelly Farms Pad Sec.4-T5N-R66W

SRC Kelly Farms A-4-3CHZ

Wellbore #1

Plan #1 (5-20-13)

Anticollision Report

29 May, 2013

Northridge Pad Sec.4-T5N-R66W - Northridge 11-4D (Exist.) - Wellbore #1 - Wellbore #1													Offset Site Error:	0.0 ft
Survey Program: 147-MWD													Offset Well Error:	0.0 ft
Reference		Offset		Semi Major Axis			Distance							
Measured Depth	Vertical Depth	Measured Depth	Vertical Depth	Reference	Offset	Highside Toolface	Offset Wellbore Centre		Between Centres	Between Ellipses	Minimum Separation	Separation Factor	Warning	
(ft)	(ft)	(ft)	(ft)	(ft)	(ft)	(°)	+N/-S (ft)	+E/-W (ft)	(ft)	(ft)	(ft)			
600.0	600.0	643.3	640.9	1.2	1.4	100.93	-66.1	342.2	352.8	350.3	2.55	138.483		
700.0	700.0	744.1	739.9	1.5	1.8	99.46	-54.6	327.7	336.5	333.5	3.01	111.663		
800.0	800.0	842.9	837.1	1.7	2.1	123.01	-43.6	314.0	322.0	318.5	3.54	90.877		
900.0	899.8	953.6	945.5	1.9	2.6	121.88	-28.7	296.6	307.4	303.3	4.09	75.102		
1,000.0	999.5	1,068.1	1,056.6	2.1	3.1	121.75	-15.2	273.0	290.0	285.3	4.67	62.026		
1,100.0	1,098.7	1,174.6	1,158.8	2.4	3.7	122.16	-1.3	246.6	270.0	264.7	5.26	51.359		
1,200.0	1,197.5	1,281.2	1,259.9	2.7	4.3	122.55	16.4	217.4	248.7	242.8	5.90	42.145		
1,300.0	1,295.8	1,382.0	1,354.2	3.0	5.0	122.62	36.1	188.1	226.7	220.1	6.59	34.375		
1,400.0	1,394.0	1,482.4	1,447.0	3.3	5.8	121.40	59.8	157.9	203.3	195.9	7.40	27.483		
1,500.0	1,492.2	1,581.7	1,538.2	3.7	6.5	119.45	84.5	127.3	179.0	170.7	8.29	21.589		
1,600.0	1,590.5	1,681.3	1,628.8	4.1	7.4	116.58	110.1	94.6	152.9	143.6	9.32	16.402		
1,700.0	1,688.7	1,778.5	1,716.6	4.5	8.2	112.24	135.7	61.8	126.3	115.8	10.53	12.000		
1,800.0	1,787.0	1,875.7	1,804.4	4.8	9.0	106.56	159.5	27.7	99.2	87.3	11.91	8.331		
1,900.0	1,885.2	1,970.9	1,890.0	5.2	9.9	96.24	183.6	-6.4	73.1	59.4	13.73	5.325		
2,000.0	1,983.5	2,066.1	1,975.3	5.6	10.7	75.70	209.0	-40.1	52.8	36.8	15.96	3.307		
2,094.3	2,076.1	2,156.2	2,056.3	6.0	11.5	44.73	232.1	-72.0	44.2	27.6	16.58	2.665 CC, ES, SF		
2,100.0	2,081.7	2,161.5	2,061.0	6.0	11.5	42.61	233.5	-73.9	44.2	27.7	16.51	2.678		
2,200.0	2,179.9	2,254.8	2,144.0	6.4	12.4	10.71	259.8	-107.6	56.5	42.2	14.34	3.938		
2,300.0	2,278.2	2,350.9	2,229.4	6.8	13.2	-5.25	289.4	-140.3	81.2	67.9	13.28	6.116		
2,400.0	2,376.4	2,449.5	2,318.1	7.2	14.1	-15.41	315.7	-174.5	106.1	93.1	13.05	8.129		
2,500.0	2,474.7	2,544.3	2,403.7	7.6	14.9	-22.73	338.0	-208.5	131.7	118.3	13.36	9.860		
2,600.0	2,572.9	2,638.5	2,488.2	8.0	15.8	-27.41	361.3	-242.9	160.0	146.1	13.96	11.459		
2,700.0	2,671.2	2,729.5	2,569.6	8.4	16.6	-30.07	385.5	-275.7	189.7	175.1	14.66	12.943		
2,800.0	2,769.4	2,815.3	2,644.8	8.8	17.5	-31.14	412.2	-307.3	223.0	207.6	15.33	14.541		
2,900.0	2,867.6	2,904.4	2,721.1	9.2	18.4	-31.52	442.9	-341.5	259.8	243.8	16.01	16.228		
3,000.0	2,965.9	3,011.6	2,813.8	9.6	19.4	-32.04	478.4	-381.9	295.2	278.4	16.75	17.624		
3,100.0	3,064.1	3,112.8	2,903.8	10.0	20.4	-32.75	508.2	-417.0	325.7	308.2	17.48	18.628		
3,200.0	3,162.4	3,208.3	2,988.7	10.5	21.2	-33.07	537.4	-449.5	356.3	338.1	18.18	19.602		
3,300.0	3,260.6	3,316.0	3,085.3	10.9	22.2	-33.55	568.7	-485.6	385.6	366.6	18.93	20.367		
3,400.0	3,358.9	3,431.8	3,191.6	11.3	23.1	-34.49	596.9	-521.9	410.3	390.6	19.75	20.774		
3,500.0	3,457.1	3,518.0	3,270.7	11.7	23.8	-35.16	617.5	-549.0	434.9	414.5	20.46	21.262		
3,600.0	3,555.3	3,615.4	3,359.7	12.1	24.5	-35.65	642.6	-579.9	460.9	439.7	21.20	21.738		
3,700.0	3,653.6	3,731.3	3,466.8	12.5	25.4	-36.36	669.6	-614.7	484.1	462.0	22.03	21.975		
3,800.0	3,751.8	3,838.3	3,567.1	12.9	26.1	-37.08	692.1	-644.5	504.1	481.3	22.82	22.090		
3,900.0	3,850.1	3,921.0	3,644.7	13.3	26.7	-37.76	708.2	-668.2	524.5	500.9	23.55	22.274		
4,000.0	3,948.3	3,986.0	3,704.3	13.7	27.2	-38.17	723.1	-689.4	550.0	525.9	24.18	22.748		
4,100.0	4,046.6	4,074.8	3,784.4	14.1	28.0	-38.65	744.9	-720.9	579.1	554.1	24.94	23.219		
4,200.0	4,144.8	4,148.6	3,850.3	14.6	28.7	-39.01	763.6	-748.3	610.2	584.5	25.63	23.805		
4,300.0	4,243.0	4,228.4	3,920.2	15.0	29.5	-39.13	787.0	-779.0	644.3	618.0	26.32	24.478		
4,400.0	4,341.3	4,326.4	4,004.9	15.4	30.5	-38.87	819.9	-815.5	679.5	652.5	27.02	25.150		
4,500.0	4,439.5	4,480.0	4,141.4	15.8	31.9	-38.68	867.1	-867.6	710.3	682.4	27.93	25.430		
4,600.0	4,537.8	4,583.9	4,236.3	16.2	32.7	-38.72	895.4	-899.2	735.9	707.2	28.67	25.670		
4,700.0	4,636.0	4,671.4	4,316.0	16.6	33.5	-38.79	918.9	-926.4	761.9	732.6	29.35	25.959		
4,800.0	4,734.3	4,761.7	4,398.0	17.0	34.2	-38.87	943.3	-955.4	789.0	758.9	30.06	26.251		
4,900.0	4,832.5	4,856.8	4,484.3	17.4	35.0	-39.03	968.2	-986.5	816.2	785.4	30.80	26.503		
5,000.0	4,930.7	4,939.8	4,559.2	17.9	35.7	-39.06	991.4	-1,013.8	844.5	813.0	31.47	26.838		
5,100.0	5,029.0	5,025.0	4,635.6	18.3	36.5	-39.11	1,015.4	-1,042.8	874.0	841.9	32.16	27.181		
5,200.0	5,127.2	5,101.4	4,703.7	18.7	37.2	-39.20	1,036.9	-1,070.2	905.1	872.3	32.82	27.577		
5,300.0	5,225.5	5,180.7	4,773.5	19.1	38.0	-39.24	1,060.3	-1,099.6	938.1	904.6	33.50	28.005		
5,400.0	5,323.7	5,277.2	4,858.0	19.5	39.0	-39.24	1,089.6	-1,135.8	971.9	937.7	34.23	28.391		

Northridge Pad Sec.4-T5N-R66W - Northridge 21-4D (Exist.) - Wellbore #1 - Wellbore #1													Offset Site Error:	0.0 ft
Survey Program: 150-MWD													Offset Well Error:	0.0 ft
Reference		Offset		Semi Major Axis			Distance							Warning
Measured Depth	Vertical Depth	Measured Depth	Vertical Depth	Reference	Offset	Highside Toolface	Offset Wellbore Centre		Between Centres	Between Ellipses	Minimum Separation	Separation Factor		
(ft)	(ft)	(ft)	(ft)	(ft)	(ft)	(°)	+N/-S (ft)	+E/-W (ft)	(ft)	(ft)	(ft)			
0.0	0.0	0.0	0.0	0.0	0.0	102.02	-79.8	374.7	383.4					
100.0	100.0	85.1	85.1	0.1	0.1	101.98	-79.5	374.9	383.2	383.0	0.21	1,839.526		
200.0	200.0	187.4	187.4	0.3	0.3	101.80	-78.4	375.3	383.4	382.8	0.59	649.639		
300.0	300.0	298.1	298.0	0.6	0.5	101.17	-73.9	374.4	381.8	380.7	1.07	356.002		
400.0	400.0	407.4	406.9	0.8	0.8	100.04	-65.7	371.0	377.3	375.8	1.56	241.142		
500.0	500.0	513.1	512.0	1.0	1.1	98.58	-55.2	365.9	371.0	368.9	2.06	180.476		
600.0	600.0	617.5	615.3	1.2	1.4	96.57	-41.5	359.8	363.4	360.8	2.57	141.590		
700.0	700.0	716.0	712.4	1.5	1.8	94.27	-26.4	353.7	355.6	352.6	3.08	115.452		
800.0	800.0	817.2	812.1	1.7	2.1	116.69	-10.4	347.3	349.2	345.4	3.76	92.972		
900.0	899.8	921.7	914.5	1.9	2.6	114.42	8.9	339.4	343.5	339.1	4.40	78.105		
1,000.0	999.5	1,025.0	1,014.8	2.1	3.1	111.96	31.9	330.1	338.3	333.2	5.11	66.173		
1,100.0	1,098.7	1,132.9	1,118.4	2.4	3.6	109.27	59.5	318.3	333.3	327.4	5.93	56.167		
1,200.0	1,197.5	1,233.1	1,213.6	2.7	4.2	106.72	88.0	305.2	328.3	321.5	6.81	48.185		
1,300.0	1,295.8	1,329.1	1,303.9	3.0	4.8	104.10	118.0	292.6	325.1	317.3	7.76	41.889		
1,400.0	1,394.0	1,428.5	1,397.4	3.3	5.4	101.31	149.5	280.0	323.1	314.4	8.72	37.063		
1,500.0	1,492.2	1,530.7	1,493.7	3.7	6.0	98.57	180.7	266.4	321.1	311.5	9.68	33.186		
1,600.0	1,590.5	1,630.1	1,587.7	4.1	6.6	96.06	210.1	253.0	319.3	308.7	10.63	30.034		
1,700.0	1,688.7	1,728.7	1,681.2	4.5	7.1	93.67	238.6	239.9	318.1	306.5	11.57	27.483		
1,800.0	1,787.0	1,827.3	1,775.0	4.8	7.7	91.46	266.2	227.4	317.6	305.1	12.51	25.377		
1,825.0	1,811.5	1,851.9	1,798.5	4.9	7.8	90.94	272.9	224.3	317.6	304.8	12.75	24.911 CC		
1,900.0	1,885.2	1,925.8	1,869.1	5.2	8.2	89.44	292.9	215.4	317.8	304.3	13.44	23.637		
2,000.0	1,983.5	2,025.6	1,964.6	5.6	8.8	87.55	319.3	203.8	318.5	304.1	14.37	22.165		
2,100.0	2,081.7	2,127.0	2,061.8	6.0	9.3	85.71	345.5	191.8	319.1	303.8	15.30	20.849		
2,200.0	2,179.9	2,227.4	2,157.7	6.4	9.9	83.71	372.2	179.0	319.5	303.3	16.23	19.684		
2,300.0	2,278.2	2,325.2	2,251.5	6.8	10.4	81.96	397.3	167.0	320.3	303.2	17.13	18.705 ES		
2,400.0	2,376.4	2,422.4	2,344.9	7.2	10.9	80.35	422.1	156.1	322.2	304.2	18.00	17.902		
2,500.0	2,474.7	2,520.3	2,438.5	7.6	11.5	78.52	448.4	144.9	325.0	306.1	18.88	17.213		
2,600.0	2,572.9	2,621.6	2,535.0	8.0	12.1	76.41	476.8	132.5	328.2	308.5	19.77	16.602		
2,700.0	2,671.2	2,717.5	2,625.9	8.4	12.7	74.27	504.4	120.0	331.7	311.1	20.63	16.082		
2,800.0	2,769.4	2,813.6	2,716.3	8.8	13.3	71.81	534.3	106.9	336.9	315.5	21.46	15.698		
2,900.0	2,867.6	2,917.1	2,813.9	9.2	13.9	69.35	565.9	93.2	342.6	320.3	22.29	15.371		
3,000.0	2,965.9	3,017.7	2,909.4	9.6	14.6	67.31	594.8	80.2	347.7	324.6	23.07	15.070		
3,100.0	3,064.1	3,111.1	2,997.7	10.0	15.1	65.31	622.6	67.7	353.9	330.0	23.81	14.862		
3,200.0	3,162.4	3,219.4	3,100.4	10.5	15.8	63.19	653.9	53.5	359.8	335.2	24.56	14.649		
3,300.0	3,260.6	3,318.4	3,195.1	10.9	16.3	61.70	680.3	41.6	365.0	339.7	25.26	14.449		
3,400.0	3,358.9	3,419.5	3,291.8	11.3	16.9	60.25	707.1	29.7	370.5	344.5	25.95	14.275		
3,500.0	3,457.1	3,525.4	3,393.8	11.7	17.5	59.04	733.1	17.7	374.8	348.1	26.66	14.057		
3,600.0	3,555.3	3,627.8	3,492.7	12.1	18.0	58.00	756.9	6.0	378.0	350.7	27.34	13.825		
3,700.0	3,653.6	3,725.7	3,587.3	12.5	18.5	57.09	779.2	-4.8	381.2	353.2	28.01	13.610		
3,800.0	3,751.8	3,817.2	3,675.6	12.9	18.9	56.19	801.3	-14.8	385.7	357.1	28.65	13.463		
3,900.0	3,850.1	3,908.7	3,762.6	13.3	19.5	54.81	826.9	-26.5	392.9	363.7	29.24	13.437		
4,000.0	3,948.3	4,001.6	3,850.2	13.7	20.1	53.10	855.3	-39.7	401.9	372.1	29.79	13.488		
4,100.0	4,046.6	4,096.0	3,938.5	14.1	20.7	51.33	885.6	-53.2	412.7	382.4	30.32	13.615		
4,200.0	4,144.8	4,202.7	4,038.8	14.6	21.4	49.64	919.2	-67.1	423.9	393.0	30.85	13.739		
4,300.0	4,243.0	4,304.9	4,136.1	15.0	22.0	48.50	948.2	-78.7	433.0	401.6	31.43	13.778		
4,400.0	4,341.3	4,398.1	4,224.7	15.4	22.5	47.52	975.1	-89.0	443.0	411.0	31.98	13.851		
4,500.0	4,439.5	4,496.8	4,318.1	15.8	23.1	46.36	1,005.0	-100.6	454.1	421.6	32.52	13.966		
4,600.0	4,537.8	4,596.3	4,412.0	16.2	23.8	45.16	1,035.2	-113.2	465.2	432.2	33.03	14.082		
4,700.0	4,636.0	4,681.0	4,491.6	16.6	24.3	44.06	1,062.1	-124.4	477.7	444.2	33.51	14.256		
4,800.0	4,734.3	4,796.9	4,599.9	17.0	25.1	42.52	1,100.0	-140.4	491.3	457.3	34.00	14.451		
4,900.0	4,832.5	4,893.3	4,690.6	17.4	25.7	41.29	1,129.4	-154.5	502.7	468.2	34.44	14.593		
5,000.0	4,930.7	4,995.6	4,787.2	17.9	26.4	40.20	1,160.2	-168.2	514.1	479.2	34.92	14.722		

COMPASS 2003.21 Build 46

Northridge Pad Sec.4-T5N-R66W - Northridge 21-4D (Exist.) - Wellbore #1 - Wellbore #1													Offset Site Error:	0.0 ft
Survey Program: 150-MWD													Offset Well Error:	0.0 ft
Reference		Offset		Semi Major Axis			Distance							
Measured Depth	Vertical Depth	Measured Depth	Vertical Depth	Reference	Offset	Highside Toolface	Offset Wellbore Centre		Between Centres	Between Ellipses	Minimum Separation	Separation Factor	Warning	
(ft)	(ft)	(ft)	(ft)	(ft)	(ft)	(°)	+N/-S (ft)	+E/-W (ft)	(ft)	(ft)	(ft)			
5,100.0	5,029.0	5,095.9	4,882.0	18.3	27.0	39.23	1,190.1	-181.4	525.5	490.1	35.40	14.843		
5,200.0	5,127.2	5,215.8	4,996.4	18.7	27.7	38.37	1,223.0	-195.4	535.0	499.0	35.96	14.879		
5,300.0	5,225.5	5,346.7	5,123.6	19.1	28.3	37.98	1,251.7	-207.6	539.6	503.0	36.61	14.737		
5,400.0	5,323.7	5,483.5	5,258.6	19.5	28.7	38.28	1,271.5	-216.2	537.3	499.9	37.41	14.363		
5,500.0	5,422.0	5,595.1	5,369.6	19.9	29.0	38.87	1,282.3	-221.3	530.9	492.8	38.19	13.903		
5,600.0	5,520.2	5,701.8	5,475.9	20.3	29.2	39.65	1,290.3	-224.9	522.8	483.8	39.00	13.407		
5,700.0	5,618.4	5,806.1	5,579.9	20.7	29.4	40.57	1,296.7	-227.6	513.7	473.9	39.84	12.896		
5,800.0	5,716.7	5,915.8	5,689.5	21.2	29.6	41.78	1,301.6	-229.1	503.4	462.6	40.76	12.349		
5,900.0	5,815.0	6,022.9	5,796.6	21.5	29.7	43.04	1,303.8	-230.1	491.5	449.9	41.65	11.801		
6,000.0	5,913.8	6,124.7	5,898.4	21.8	29.8	44.00	1,304.8	-231.2	481.0	438.7	42.33	11.364		
6,100.0	6,013.1	6,224.4	5,998.1	22.1	29.9	44.68	1,305.5	-232.6	472.9	430.0	42.87	11.030		
6,200.0	6,112.8	6,323.7	6,097.3	22.3	30.1	45.08	1,306.4	-234.3	467.2	423.9	43.28	10.795		
6,300.0	6,212.7	6,422.5	6,196.1	22.4	30.2	45.20	1,307.5	-236.1	464.3	420.7	43.56	10.659		
6,357.2	6,269.9	6,478.3	6,251.9	22.5	30.2	45.14	1,308.3	-237.1	463.8	420.1	43.66	10.622		
6,400.0	6,312.7	6,520.0	6,293.6	22.6	30.3	20.45	1,309.0	-237.9	464.1	420.4	43.74	10.610		
6,500.0	6,412.7	6,617.7	6,391.3	22.7	30.4	20.16	1,311.1	-239.6	465.5	421.4	44.13	10.549 SF		
6,600.0	6,512.7	6,715.8	6,489.3	22.8	30.6	-70.12	1,313.5	-241.2	467.3	423.2	44.13	10.590		
6,700.0	6,612.3	6,815.1	6,588.5	22.9	30.7	-71.29	1,316.2	-242.6	466.9	422.9	43.98	10.615		
6,800.0	6,709.9	6,912.0	6,685.4	22.9	30.8	-74.30	1,318.8	-244.0	462.6	419.6	42.95	10.770		
6,900.0	6,803.6	7,002.3	6,775.6	22.9	31.0	-78.82	1,321.7	-245.8	456.9	415.5	41.35	11.050		
7,000.0	6,891.6	7,085.6	6,858.8	22.8	31.1	-84.33	1,325.1	-248.0	453.1	413.5	39.58	11.449		
7,020.3	6,908.6	7,101.4	6,874.7	22.8	31.1	-85.49	1,325.8	-248.5	453.0	413.7	39.25	11.542		
7,100.0	6,972.1	7,160.5	6,933.6	22.7	31.2	-89.96	1,328.7	-250.3	455.6	417.5	38.09	11.962		
7,200.0	7,043.6	7,226.8	6,999.8	22.6	31.4	-94.88	1,332.4	-252.4	468.3	431.2	37.13	12.612		
7,300.0	7,104.7	7,284.4	7,057.3	22.5	31.5	-98.41	1,335.8	-254.2	494.2	457.3	36.86	13.406		
7,400.0	7,154.2	7,330.9	7,103.7	22.4	31.6	-99.81	1,338.7	-255.5	534.2	496.7	37.44	14.269		
7,500.0	7,191.1	7,365.7	7,138.4	22.4	31.7	-98.64	1,341.0	-256.4	587.7	548.7	38.97	15.081		
7,600.0	7,214.8	7,390.2	7,162.8	22.4	31.7	-94.73	1,342.5	-256.9	652.3	611.1	41.28	15.804		
7,700.0	7,224.7	7,399.4	7,172.0	23.2	31.7	-87.27	1,343.1	-257.1	725.4	681.6	43.82	16.553		
7,800.0	7,225.0	7,397.6	7,170.2	24.8	31.7	-85.02	1,343.0	-257.0	804.1	758.5	45.68	17.604		
7,900.0	7,225.0	7,395.3	7,167.9	26.8	31.7	-84.75	1,342.8	-257.0	887.2	839.6	47.62	18.631		
8,000.0	7,225.0	7,392.9	7,165.5	28.8	31.7	-84.46	1,342.7	-256.9	973.4	923.7	49.69	19.587		

Company:	Synergy Resources	Local Co-ordinate Reference:	Well SRC Kelly Farms A-4-3CHZ
Project:	SEC.4-T5N-R66W	TVD Reference:	WELL @ 4767.0ft (Original Well Elev)
Reference Site:	SRC Kelly Farms Pad Sec.4-T5N-R66W	MD Reference:	WELL @ 4767.0ft (Original Well Elev)
Site Error:	0.0ft	North Reference:	True
Reference Well:	SRC Kelly Farms A-4-3CHZ	Survey Calculation Method:	Minimum Curvature
Well Error:	0.0ft	Output errors are at	2.00 sigma
Reference Wellbore	Wellbore #1	Database:	Landmark
Reference Design:	Plan #1 (5-20-13)	Offset TVD Reference:	Offset Datum

Offset Design Northridge Pad Sec.4-T5N-R66W - Northridge 4AD (Exist.) - Wellbore #1 - Wellbore #1													Offset Site Error:	0.0 ft
Survey Program: 182-MWD													Offset Well Error:	0.0 ft
Reference	Offset	Semi Major Axis		Distance										Warning
Measured Depth (ft)	Vertical Depth (ft)	Measured Depth (ft)	Vertical Depth (ft)	Reference (ft)	Offset (ft)	Highside Toolface (°)	Offset Wellbore Centre +N/-S (ft)	+E/-W (ft)	Between Centres (ft)	Between Ellipses (ft)	Minimum Separation (ft)	Separation Factor		
0.0	0.0	0.0	0.0	0.0	0.0	105.48	-100.6	363.0	377.0					
100.0	100.0	87.9	87.9	0.1	0.1	105.48	-100.5	362.8	376.5	376.3	0.21	1,778.968		
200.0	200.0	189.4	189.4	0.3	0.2	105.48	-100.2	362.0	375.7	375.1	0.56	673.983		
251.8	251.8	237.8	237.8	0.5	0.3	105.46	-100.1	361.9	375.4	374.7	0.77	486.365		
300.0	300.0	283.8	283.8	0.6	0.4	105.43	-100.0	362.1	375.6	374.7	0.97	385.889		
400.0	400.0	388.9	388.9	0.8	0.6	105.48	-100.2	362.0	375.6	374.2	1.42	265.152		
500.0	500.0	492.2	492.2	1.0	0.9	105.53	-100.1	360.4	374.1	372.2	1.86	200.650		
600.0	600.0	590.6	590.6	1.2	1.1	105.41	-99.0	359.3	372.8	370.5	2.29	162.439		
700.0	700.0	690.8	690.8	1.5	1.3	105.56	-99.6	357.9	371.5	368.8	2.73	136.145		
800.0	800.0	794.7	794.6	1.7	1.5	130.56	-100.4	355.9	371.0	367.8	3.17	116.881		
807.3	807.3	802.4	802.4	1.7	1.5	130.61	-100.4	355.7	371.0	367.8	3.21	115.671		
900.0	899.8	894.4	894.3	1.9	1.7	131.23	-100.2	353.4	372.0	368.4	3.61	103.149		
1,000.0	999.5	1,008.6	1,008.4	2.1	2.0	132.32	-98.7	349.1	373.9	369.8	4.08	91.736		
1,100.0	1,098.7	1,125.4	1,124.7	2.4	2.2	133.96	-95.6	339.1	373.1	368.5	4.57	81.683		
1,165.7	1,163.7	1,193.4	1,192.3	2.6	2.4	134.92	-92.0	332.4	372.8	367.9	4.88	76.405		
1,200.0	1,197.5	1,230.0	1,228.6	2.7	2.5	135.46	-89.8	328.6	372.8	367.8	5.04	73.931		
1,300.0	1,295.8	1,345.0	1,342.5	3.0	2.8	137.43	-82.2	314.6	372.4	366.9	5.57	66.893		
1,400.0	1,394.0	1,458.4	1,454.0	3.3	3.2	139.22	-71.5	296.5	367.9	361.8	6.11	60.198		
1,500.0	1,492.2	1,559.0	1,552.4	3.7	3.6	140.88	-61.4	278.6	361.7	355.1	6.63	54.593		
1,600.0	1,590.5	1,668.6	1,659.3	4.1	4.0	143.08	-51.4	256.7	354.2	347.1	7.17	49.420		
1,700.0	1,688.7	1,773.3	1,760.8	4.5	4.4	145.22	-40.3	233.6	344.7	337.0	7.71	44.698		
1,800.0	1,787.0	1,871.6	1,856.0	4.8	4.9	147.46	-30.2	211.2	335.1	326.9	8.23	40.718		
1,900.0	1,885.2	1,973.6	1,954.7	5.2	5.3	149.84	-19.2	188.0	325.9	317.2	8.76	37.200		
2,000.0	1,983.5	2,079.6	2,056.8	5.6	5.9	152.37	-6.2	162.5	315.2	305.9	9.33	33.806		
2,100.0	2,081.7	2,185.9	2,158.5	6.0	6.5	154.98	8.9	135.5	302.9	293.0	9.91	30.567		
2,200.0	2,179.9	2,287.5	2,255.1	6.4	7.1	157.55	25.2	108.6	288.9	278.4	10.49	27.531		
2,300.0	2,278.2	2,383.5	2,346.3	6.8	7.6	160.35	40.2	82.7	275.5	264.4	11.07	24.882		
2,400.0	2,376.4	2,480.9	2,439.0	7.2	8.1	163.46	55.0	56.8	263.5	251.8	11.68	22.561		
2,500.0	2,474.7	2,585.0	2,537.9	7.6	8.7	166.98	71.8	28.9	251.5	239.1	12.37	20.331		
2,600.0	2,572.9	2,682.8	2,630.5	8.0	9.3	170.41	89.1	2.7	239.1	226.0	13.08	18.279		
2,700.0	2,671.2	2,783.3	2,725.3	8.4	10.0	174.71	106.5	-25.8	227.1	213.2	13.92	16.316		
2,800.0	2,769.4	2,879.4	2,815.5	8.8	10.6	179.71	122.3	-54.8	216.4	201.5	14.91	14.516		
2,900.0	2,867.6	2,970.5	2,901.9	9.2	11.2	-175.58	136.2	-80.1	209.6	193.7	15.91	13.174		
3,000.0	2,965.9	3,069.7	2,996.4	9.6	11.7	-170.29	150.4	-107.0	205.8	188.7	17.09	12.042		
3,100.0	3,064.1	3,170.7	3,092.2	10.0	12.4	-164.82	166.4	-134.4	202.3	183.9	18.39	11.004		
3,174.4	3,137.2	3,240.5	3,158.8	10.3	12.8	-161.17	177.2	-152.5	201.3	182.0	19.31	10.422 CC		
3,200.0	3,162.4	3,263.7	3,181.0	10.5	12.9	-159.99	180.5	-158.4	201.4	181.8	19.62	10.265 ES		
3,300.0	3,260.6	3,356.1	3,269.7	10.9	13.4	-155.38	191.6	-181.6	205.4	184.6	20.87	9.844		
3,400.0	3,358.9	3,455.2	3,365.2	11.3	13.9	-150.89	202.9	-205.7	211.4	189.3	22.15	9.545		
3,500.0	3,457.1	3,551.8	3,458.4	11.7	14.4	-146.88	213.0	-228.9	219.6	196.2	23.38	9.394		
3,600.0	3,555.3	3,652.9	3,556.2	12.1	14.9	-143.21	224.3	-252.2	227.9	203.4	24.59	9.272		
3,700.0	3,653.6	3,754.4	3,654.0	12.5	15.5	-139.58	236.1	-276.4	236.9	211.1	25.81	9.177		
3,800.0	3,751.8	3,860.6	3,755.4	12.9	16.1	-135.35	252.2	-303.5	243.8	216.6	27.17	8.974		
3,900.0	3,850.1	3,961.8	3,850.6	13.3	16.8	-130.67	270.9	-332.0	249.9	221.3	28.57	8.749		
4,000.0	3,948.3	4,058.7	3,941.2	13.7	17.5	-125.99	290.1	-360.8	257.2	227.3	29.92	8.595		
4,100.0	4,046.6	4,154.2	4,030.7	14.1	18.1	-121.76	308.1	-389.0	266.7	235.6	31.15	8.564 SF		
4,200.0	4,144.8	4,247.8	4,119.4	14.6	18.7	-118.63	323.2	-414.4	278.6	246.4	32.19	8.653		
4,300.0	4,243.0	4,344.6	4,211.7	15.0	19.3	-115.92	337.0	-440.5	292.5	259.3	33.22	8.805		
4,400.0	4,341.3	4,446.9	4,308.1	15.4	19.9	-112.70	354.0	-470.2	306.6	272.4	34.26	8.951		
4,500.0	4,439.5	4,546.4	4,401.8	15.8	20.6	-109.81	371.7	-498.2	320.3	285.0	35.24	9.087		
4,600.0	4,537.8	4,630.9	4,480.7	16.2	21.2	-107.21	387.1	-524.3	336.3	300.2	36.14	9.307		
4,700.0	4,636.0	4,740.0	4,582.4	16.6	22.0	-104.14	406.2	-559.0	354.5	317.4	37.11	9.551		

CC - Min centre to center distance or convergent point, SF - min separation factor, ES - min ellipse separation

Company:	Synergy Resources	Local Co-ordinate Reference:	Well SRC Kelly Farms A-4-3CHZ
Project:	SEC.4-T5N-R66W	TVD Reference:	WELL @ 4767.0ft (Original Well Elev)
Reference Site:	SRC Kelly Farms Pad Sec.4-T5N-R66W	MD Reference:	WELL @ 4767.0ft (Original Well Elev)
Site Error:	0.0ft	North Reference:	True
Reference Well:	SRC Kelly Farms A-4-3CHZ	Survey Calculation Method:	Minimum Curvature
Well Error:	0.0ft	Output errors are at	2.00 sigma
Reference Wellbore	Wellbore #1	Database:	Landmark
Reference Design:	Plan #1 (5-20-13)	Offset TVD Reference:	Offset Datum

Offset Design Northridge Pad Sec.4-T5N-R66W - Northridge 4AD (Exist.) - Wellbore #1 - Wellbore #1												Offset Site Error:	0.0 ft
Survey Program: 182-MWD												Offset Well Error:	0.0 ft
Reference		Offset		Semi Major Axis			Distance						
Measured Depth (ft)	Vertical Depth (ft)	Measured Depth (ft)	Vertical Depth (ft)	Reference (ft)	Offset (ft)	Highside Toolface (°)	Offset Wellbore Centre +N/-S (ft)	+E/-W (ft)	Between Centres (ft)	Between Ellipses (ft)	Minimum Separation (ft)	Separation Factor	Warning
4,800.0	4,734.3	4,840.4	4,676.5	17.0	22.6	-101.73	425.0	-588.2	370.3	332.3	37.97	9.752	
4,900.0	4,832.5	4,936.7	4,767.6	17.4	23.3	-99.91	441.5	-615.0	386.6	347.8	38.79	9.968	
5,000.0	4,930.7	5,040.9	4,866.3	17.9	23.9	-98.20	459.2	-643.1	402.6	362.9	39.62	10.161	
5,100.0	5,029.0	5,139.9	4,960.9	18.3	24.5	-97.03	474.6	-667.8	417.9	377.5	40.42	10.338	
5,200.0	5,127.2	5,240.5	5,058.0	18.7	25.0	-96.45	486.8	-691.2	433.7	392.4	41.23	10.519	
5,300.0	5,225.5	5,351.7	5,166.7	19.1	25.5	-96.57	497.1	-711.9	446.9	404.8	42.08	10.619	
5,400.0	5,323.7	5,455.0	5,268.3	19.5	25.9	-96.97	505.5	-728.9	458.9	416.0	42.89	10.698	
5,500.0	5,422.0	5,563.8	5,376.0	19.9	26.2	-97.92	511.4	-743.1	469.5	425.8	43.73	10.738	
5,600.0	5,520.2	5,676.3	5,487.9	20.3	26.5	-99.33	515.7	-753.2	477.8	433.2	44.56	10.723	
5,700.0	5,618.4	5,782.9	5,594.2	20.7	26.7	-100.69	520.7	-760.5	484.0	438.7	45.34	10.675	
5,800.0	5,716.7	5,882.4	5,693.4	21.2	26.9	-102.11	524.5	-765.8	489.8	443.8	46.08	10.631	
5,900.0	5,815.0	5,981.8	5,792.8	21.5	27.0	-103.79	526.6	-769.4	495.6	448.8	46.76	10.598	
6,000.0	5,913.8	6,074.0	5,884.9	21.8	27.2	-105.12	527.5	-773.1	501.9	454.6	47.30	10.612	
6,100.0	6,013.1	6,175.2	5,986.0	22.1	27.3	-106.17	528.2	-777.3	507.9	460.1	47.77	10.632	
6,200.0	6,112.8	6,273.7	6,084.4	22.3	27.5	-106.83	528.6	-781.1	512.8	464.7	48.16	10.649	
6,300.0	6,212.7	6,370.5	6,181.2	22.4	27.6	-107.18	528.2	-784.7	517.3	468.9	48.48	10.671	
6,400.0	6,312.7	6,474.4	6,285.0	22.6	27.7	-131.84	526.9	-787.8	520.7	487.2	33.53	15.529	
6,500.0	6,412.7	6,575.9	6,386.5	22.7	27.9	-131.83	525.4	-789.7	523.1	489.2	33.90	15.432	
6,600.0	6,512.7	6,675.1	6,485.6	22.8	28.0	138.28	524.6	-792.2	525.5	476.3	49.24	10.673	
6,700.0	6,612.3	6,772.5	6,583.0	22.9	28.1	138.51	523.9	-795.0	533.8	484.7	49.16	10.860	
6,800.0	6,709.9	6,869.0	6,679.5	22.9	28.2	138.94	522.0	-797.2	553.0	504.5	48.51	11.399	
6,900.0	6,803.6	6,964.6	6,775.0	22.9	28.3	139.58	520.2	-799.1	582.7	535.4	47.34	12.309	
7,000.0	6,891.6	7,049.6	6,860.0	22.8	28.4	140.00	519.1	-801.0	623.2	577.5	45.76	13.619	
7,100.0	6,972.1	7,123.9	6,934.3	22.7	28.6	139.87	518.6	-803.5	675.2	631.3	43.97	15.356	
7,200.0	7,043.6	7,198.2	7,008.5	22.6	28.7	139.34	518.5	-806.4	738.0	695.8	42.17	17.498	
7,300.0	7,104.7	7,268.8	7,079.0	22.5	28.8	137.93	518.9	-808.3	809.5	768.7	40.77	19.855	
7,400.0	7,154.2	7,323.6	7,133.9	22.4	28.8	134.41	519.4	-809.1	888.7	848.2	40.50	21.944	
7,500.0	7,191.1	7,359.4	7,169.7	22.4	28.9	127.18	519.7	-809.5	974.8	932.6	42.24	23.080	

SRC Kelly Farms Pad Sec.4-T5N-R66W - SRC Kelly Farms 21-4-3NHZ - Wellbore #1 - Plan #1 (5-20-1)													Offset Site Error:	0.0 ft
Survey Program: 0-MWD													Offset Well Error:	0.0 ft
Reference		Offset		Semi Major Axis			Distance							
Measured Depth	Vertical Depth	Measured Depth	Vertical Depth	Reference	Offset	Highside Toolface	Offset Wellbore Centre		Between Centres	Between Ellipses	Minimum Separation	Separation Factor	Warning	
(ft)	(ft)	(ft)	(ft)	(ft)	(ft)	(°)	+N/-S (ft)	+E/-W (ft)	(ft)	(ft)	(ft)			
0.0	0.0	0.0	0.0	0.0	0.0	49.01	30.2	34.8	46.1					
100.0	100.0	98.0	98.0	0.1	0.1	49.01	30.2	34.8	46.1	45.9	0.22	207.175		
200.0	200.0	198.0	198.0	0.3	0.3	49.01	30.2	34.8	46.1	45.4	0.67	68.828	CC, ES	
300.0	300.0	297.3	297.3	0.6	0.6	47.20	31.8	34.4	46.9	45.7	1.12	41.937		
400.0	400.0	396.3	396.1	0.8	0.8	41.99	36.7	33.1	49.5	47.9	1.57	31.481		
500.0	500.0	494.9	494.3	1.0	1.0	34.54	44.9	30.9	54.6	52.6	2.04	26.737		
600.0	600.0	592.7	591.5	1.2	1.3	26.39	56.2	27.9	63.1	60.5	2.54	24.854		
700.0	700.0	689.7	687.3	1.5	1.6	18.82	70.6	24.1	75.3	72.3	3.05	24.668		
800.0	800.0	785.8	781.8	1.7	2.0	37.53	87.9	19.4	90.1	86.6	3.49	25.845		
900.0	899.8	881.4	875.0	1.9	2.4	33.62	108.2	14.1	105.7	101.8	3.97	26.628		
1,000.0	999.5	976.5	967.1	2.1	2.8	30.96	131.3	7.9	121.8	117.3	4.47	27.270		
1,100.0	1,098.7	1,072.5	1,059.1	2.4	3.3	29.14	157.5	0.9	137.9	132.9	4.98	27.691		
1,200.0	1,197.5	1,171.5	1,153.9	2.7	3.9	28.20	185.1	-6.4	151.8	146.3	5.52	27.509		
1,300.0	1,295.8	1,270.9	1,249.0	3.0	4.4	27.95	212.8	-13.8	163.2	157.1	6.09	26.815		
1,400.0	1,394.0	1,370.2	1,344.2	3.3	5.0	27.80	240.6	-21.2	174.4	167.8	6.68	26.131		
1,500.0	1,492.2	1,469.6	1,439.3	3.7	5.6	27.67	268.3	-28.6	185.6	178.4	7.27	25.525		
1,600.0	1,590.5	1,569.0	1,534.4	4.1	6.1	27.56	296.1	-35.9	196.8	189.0	7.88	24.995		
1,700.0	1,688.7	1,668.3	1,629.6	4.5	6.7	27.46	323.8	-43.3	208.1	199.6	8.48	24.526		
1,800.0	1,787.0	1,767.7	1,724.7	4.8	7.3	27.37	351.5	-50.7	219.3	210.2	9.09	24.111		
1,900.0	1,885.2	1,867.1	1,819.8	5.2	7.9	27.28	379.3	-58.1	230.5	220.8	9.71	23.741		
2,000.0	1,983.5	1,966.5	1,915.0	5.6	8.4	27.21	407.0	-65.5	241.7	231.4	10.32	23.410		
2,100.0	2,081.7	2,065.8	2,010.1	6.0	9.0	27.14	434.8	-72.9	252.9	242.0	10.94	23.112		
2,200.0	2,179.9	2,165.2	2,105.2	6.4	9.6	27.08	462.5	-80.2	264.1	252.6	11.56	22.843		
2,300.0	2,278.2	2,264.6	2,200.4	6.8	10.2	27.02	490.2	-87.6	275.3	263.1	12.18	22.599		
2,400.0	2,376.4	2,363.9	2,295.5	7.2	10.8	26.97	518.0	-95.0	286.5	273.7	12.81	22.376		
2,500.0	2,474.7	2,463.3	2,390.6	7.6	11.3	26.92	545.7	-102.4	297.8	284.3	13.43	22.173		
2,600.0	2,572.9	2,562.7	2,485.8	8.0	11.9	26.87	573.5	-109.8	309.0	294.9	14.05	21.986		
2,700.0	2,671.2	2,662.0	2,580.9	8.4	12.5	26.83	601.2	-117.2	320.2	305.5	14.68	21.814		
2,800.0	2,769.4	2,761.4	2,676.0	8.8	13.1	26.79	629.0	-124.5	331.4	316.1	15.30	21.656		
2,900.0	2,867.6	2,860.8	2,771.2	9.2	13.7	26.76	656.7	-131.9	342.6	326.7	15.93	21.509		
3,000.0	2,965.9	2,960.1	2,866.3	9.6	14.2	26.72	684.4	-139.3	353.8	337.3	16.56	21.372		
3,100.0	3,064.1	3,059.5	2,961.4	10.0	14.8	26.69	712.2	-146.7	365.0	347.9	17.18	21.245		
3,200.0	3,162.4	3,158.9	3,056.6	10.5	15.4	26.66	739.9	-154.1	376.3	358.4	17.81	21.127		
3,300.0	3,260.6	3,258.2	3,151.7	10.9	16.0	26.63	767.7	-161.5	387.5	369.0	18.44	21.016		
3,400.0	3,358.9	3,357.6	3,246.8	11.3	16.6	26.60	795.4	-168.8	398.7	379.6	19.06	20.913		
3,500.0	3,457.1	3,457.0	3,342.0	11.7	17.1	26.58	823.1	-176.2	409.9	390.2	19.69	20.815		
3,600.0	3,555.3	3,556.4	3,437.1	12.1	17.7	26.56	850.9	-183.6	421.1	400.8	20.32	20.723		
3,700.0	3,653.6	3,655.7	3,532.2	12.5	18.3	26.53	878.6	-191.0	432.3	411.4	20.95	20.637		
3,800.0	3,751.8	3,755.1	3,627.4	12.9	18.9	26.51	906.4	-198.4	443.5	422.0	21.58	20.556		
3,900.0	3,850.1	3,854.5	3,722.5	13.3	19.5	26.49	934.1	-205.7	454.8	432.6	22.21	20.478		
4,000.0	3,948.3	3,953.8	3,817.6	13.7	20.1	26.47	961.8	-213.1	466.0	443.1	22.84	20.406		
4,100.0	4,046.6	4,053.2	3,912.7	14.1	20.6	26.45	989.6	-220.5	477.2	453.7	23.46	20.336		
4,200.0	4,144.8	4,152.6	4,007.9	14.6	21.2	26.43	1,017.3	-227.9	488.4	464.3	24.09	20.271		
4,300.0	4,243.0	4,251.9	4,103.0	15.0	21.8	26.42	1,045.1	-235.3	499.6	474.9	24.72	20.208		
4,400.0	4,341.3	4,351.3	4,198.1	15.4	22.4	26.40	1,072.8	-242.7	510.8	485.5	25.35	20.149		
4,500.0	4,439.5	4,450.7	4,293.3	15.8	23.0	26.39	1,100.5	-250.0	522.1	496.1	25.98	20.092		
4,600.0	4,537.8	4,550.0	4,388.4	16.2	23.6	26.37	1,128.3	-257.4	533.3	506.7	26.61	20.038		
4,700.0	4,636.0	4,649.4	4,483.5	16.6	24.1	26.36	1,156.0	-264.8	544.5	517.2	27.24	19.987		
4,800.0	4,734.3	4,748.8	4,578.7	17.0	24.7	26.34	1,183.8	-272.2	555.7	527.8	27.87	19.937		
4,900.0	4,832.5	4,848.2	4,673.8	17.4	25.3	26.33	1,211.5	-279.6	566.9	538.4	28.50	19.890		
5,000.0	4,930.7	4,947.5	4,768.9	17.9	25.9	26.32	1,239.2	-287.0	578.1	549.0	29.13	19.845		
5,100.0	5,029.0	5,046.9	4,864.1	18.3	26.5	26.30	1,267.0	-294.3	589.3	559.6	29.76	19.801		

SRC Kelly Farms Pad Sec.4-T5N-R66W - SRC Kelly Farms 21-4-3NHZ - Wellbore #1 - Plan #1 (5-20-1)													Offset Site Error:	0.0 ft
Survey Program: 0-MWD													Offset Well Error:	0.0 ft
Reference		Offset		Semi Major Axis			Distance							
Measured Depth	Vertical Depth	Measured Depth	Vertical Depth	Reference	Offset	Highside Toolface	Offset Wellbore Centre		Between Centres	Between Ellipses	Minimum Separation	Separation Factor	Warning	
(ft)	(ft)	(ft)	(ft)	(ft)	(ft)	(°)	+N/-S (ft)	+E/-W (ft)	(ft)	(ft)	(ft)			
5,200.0	5,127.2	5,146.3	4,959.2	18.7	27.1	26.29	1,294.7	-301.7	600.6	570.2	30.39	19.760		
5,300.0	5,225.5	5,245.6	5,054.3	19.1	27.6	26.28	1,322.5	-309.1	611.8	580.8	31.02	19.720		
5,400.0	5,323.7	5,345.0	5,149.5	19.5	28.2	26.27	1,350.2	-316.5	623.0	591.3	31.65	19.681		
5,500.0	5,422.0	5,444.4	5,244.6	19.9	28.8	26.26	1,377.9	-323.9	634.2	601.9	32.28	19.644		
5,600.0	5,520.2	5,543.7	5,339.7	20.3	29.4	26.25	1,405.7	-331.3	645.4	612.5	32.91	19.609		
5,700.0	5,618.4	5,661.4	5,452.7	20.7	30.0	26.27	1,437.4	-339.7	655.7	622.2	33.56	19.536		
5,800.0	5,716.7	5,789.4	5,577.0	21.2	30.5	26.42	1,467.0	-347.6	662.0	627.8	34.23	19.340		
5,900.0	5,815.0	5,917.7	5,702.8	21.5	30.9	26.70	1,491.2	-354.0	664.5	629.6	34.86	19.059		
6,000.0	5,913.8	6,046.2	5,829.8	21.8	31.3	26.98	1,510.0	-359.0	665.4	630.0	35.36	18.818		
6,100.0	6,013.1	6,174.6	5,957.5	22.1	31.5	27.21	1,523.3	-362.6	665.1	629.3	35.78	18.591		
6,200.0	6,112.8	6,302.9	6,085.5	22.3	31.8	27.41	1,531.0	-364.6	663.7	627.6	36.11	18.379		
6,300.0	6,212.7	6,428.1	6,210.7	22.4	31.9	27.57	1,533.2	-365.2	661.1	624.8	36.36	18.183		
6,400.0	6,312.7	6,528.1	6,310.7	22.6	32.0	3.02	1,533.2	-365.2	660.0	608.0	51.97	12.699		
6,500.0	6,412.7	6,624.3	6,406.8	22.7	32.0	3.34	1,533.2	-361.6	660.2	608.0	52.13	12.664		
6,600.0	6,512.7	6,717.0	6,498.1	22.8	32.1	-85.34	1,533.2	-346.3	661.3	623.8	37.55	17.614		
6,700.0	6,612.3	6,806.4	6,583.7	22.9	32.1	-83.51	1,533.2	-320.6	663.5	625.3	38.24	17.349		
6,800.0	6,709.9	6,893.8	6,663.5	22.9	32.0	-81.81	1,533.2	-285.3	666.1	627.4	38.72	17.202		
6,900.0	6,803.6	6,979.4	6,737.1	22.9	32.0	-80.26	1,533.2	-241.5	669.0	630.0	38.98	17.164		
7,000.0	6,891.6	7,063.7	6,803.9	22.8	31.9	-78.89	1,533.2	-190.2	671.9	632.9	39.05	17.208		
7,100.0	6,972.1	7,150.0	6,865.5	22.7	31.9	-77.68	1,533.2	-129.9	674.8	635.7	39.05	17.281		
7,200.0	7,043.6	7,228.8	6,915.1	22.6	31.8	-76.74	1,533.2	-68.7	677.3	638.2	39.11	17.315		
7,300.0	7,104.7	7,310.2	6,959.0	22.5	31.7	-75.99	1,533.2	-0.2	679.4	639.9	39.46	17.218		
7,400.0	7,154.2	7,391.0	6,994.6	22.4	31.7	-75.46	1,533.2	72.3	680.9	640.6	40.27	16.910		
7,500.0	7,191.1	7,471.5	7,021.6	22.4	31.7	-75.16	1,533.2	148.0	681.8	640.1	41.66	16.365		
7,600.0	7,214.8	7,550.0	7,039.7	22.4	31.7	-75.09	1,533.2	224.4	682.0	638.3	43.72	15.600		
7,700.0	7,224.7	7,632.2	7,049.6	23.2	31.8	-75.26	1,533.2	306.0	681.5	635.1	46.42	14.680		
7,800.0	7,225.0	7,721.3	7,051.0	24.8	32.0	-75.37	1,533.2	395.1	681.1	631.6	49.57	13.740		
7,900.0	7,225.0	7,821.3	7,051.0	26.8	32.4	-75.37	1,533.2	495.1	681.1	627.9	53.19	12.804		
8,000.0	7,225.0	7,921.3	7,051.0	28.8	33.1	-75.37	1,533.2	595.1	681.1	624.0	57.11	11.927		
8,100.0	7,225.0	8,021.3	7,051.0	31.0	34.3	-75.37	1,533.2	695.1	681.1	619.9	61.25	11.120		
8,200.0	7,225.0	8,121.3	7,051.0	33.3	35.9	-75.37	1,533.2	795.1	681.1	615.5	65.59	10.385		
8,300.0	7,225.0	8,221.3	7,051.0	35.7	37.7	-75.37	1,533.2	895.1	681.1	611.0	70.08	9.719		
8,400.0	7,225.0	8,321.3	7,051.0	38.1	39.8	-75.37	1,533.2	995.1	681.1	606.4	74.70	9.118		
8,500.0	7,225.0	8,421.3	7,051.0	40.6	42.0	-75.37	1,533.2	1,095.1	681.1	601.7	79.43	8.575		
8,600.0	7,225.0	8,521.3	7,051.0	43.1	44.3	-75.37	1,533.2	1,195.1	681.1	596.9	84.24	8.085		
8,700.0	7,225.0	8,621.3	7,051.0	45.6	46.7	-75.37	1,533.2	1,295.1	681.1	592.0	89.13	7.642		
8,800.0	7,225.0	8,721.3	7,051.0	48.2	49.1	-75.37	1,533.2	1,395.1	681.1	587.0	94.07	7.240		
8,900.0	7,225.0	8,821.3	7,051.0	50.8	51.6	-75.37	1,533.2	1,495.1	681.1	582.0	99.08	6.875		
9,000.0	7,225.0	8,921.3	7,051.0	53.4	54.1	-75.37	1,533.2	1,595.1	681.1	577.0	104.12	6.542		
9,100.0	7,225.0	9,021.3	7,051.0	56.0	56.6	-75.37	1,533.2	1,695.1	681.1	571.9	109.21	6.237		
9,200.0	7,225.0	9,121.3	7,051.0	58.7	59.2	-75.37	1,533.2	1,795.1	681.1	566.8	114.32	5.958		
9,300.0	7,225.0	9,221.3	7,051.0	61.3	61.8	-75.37	1,533.2	1,895.1	681.1	561.7	119.47	5.701		
9,400.0	7,225.0	9,321.3	7,051.0	64.0	64.4	-75.37	1,533.2	1,995.1	681.1	556.5	124.64	5.465		
9,500.0	7,225.0	9,421.3	7,051.0	66.7	67.0	-75.37	1,533.2	2,095.1	681.1	551.3	129.84	5.246		
9,600.0	7,225.0	9,521.3	7,051.0	69.4	69.7	-75.37	1,533.2	2,195.1	681.1	546.1	135.06	5.043		
9,700.0	7,225.0	9,621.3	7,051.0	72.1	72.3	-75.37	1,533.2	2,295.1	681.1	540.8	140.29	4.855		
9,800.0	7,225.0	9,721.3	7,051.0	74.8	75.0	-75.37	1,533.2	2,395.1	681.1	535.6	145.54	4.680		
9,900.0	7,225.0	9,821.3	7,051.0	77.5	77.7	-75.37	1,533.2	2,495.1	681.1	530.3	150.80	4.517		
10,000.0	7,225.0	9,921.3	7,051.0	80.2	80.4	-75.37	1,533.2	2,595.1	681.1	525.0	156.08	4.364		
10,100.0	7,225.0	10,021.3	7,051.0	82.9	83.1	-75.37	1,533.2	2,695.1	681.1	519.8	161.37	4.221		
10,200.0	7,225.0	10,121.3	7,051.0	85.7	85.8	-75.37	1,533.2	2,795.1	681.1	514.5	166.66	4.087		
10,300.0	7,225.0	10,221.3	7,051.0	88.4	88.5	-75.37	1,533.2	2,895.1	681.1	509.2	171.97	3.961		

Company:	Synergy Resources	Local Co-ordinate Reference:	Well SRC Kelly Farms A-4-3CHZ
Project:	SEC.4-T5N-R66W	TVD Reference:	WELL @ 4767.0ft (Original Well Elev)
Reference Site:	SRC Kelly Farms Pad Sec.4-T5N-R66W	MD Reference:	WELL @ 4767.0ft (Original Well Elev)
Site Error:	0.0ft	North Reference:	True
Reference Well:	SRC Kelly Farms A-4-3CHZ	Survey Calculation Method:	Minimum Curvature
Well Error:	0.0ft	Output errors are at	2.00 sigma
Reference Wellbore	Wellbore #1	Database:	Landmark
Reference Design:	Plan #1 (5-20-13)	Offset TVD Reference:	Offset Datum

Offset Design													Offset Site Error:	0.0 ft
Survey Program: 0-MWD													Offset Well Error:	0.0 ft
Reference		Offset		Semi Major Axis			Distance						Warning	
Measured Depth (ft)	Vertical Depth (ft)	Measured Depth (ft)	Vertical Depth (ft)	Reference (ft)	Offset (ft)	Highside Toolface (°)	Offset Wellbore Centre +N/-S (ft)	+E/-W (ft)	Between Centres (ft)	Between Ellipses (ft)	Minimum Separation (ft)	Separation Factor		
10,400.0	7,225.0	10,321.3	7,051.0	91.2	91.2	-75.37	1,533.2	2,995.1	681.1	503.8	177.29	3.842		
10,500.0	7,225.0	10,421.3	7,051.0	93.9	93.9	-75.37	1,533.2	3,095.1	681.1	498.5	182.61	3.730		
10,600.0	7,225.0	10,521.3	7,051.0	96.7	96.6	-75.37	1,533.2	3,195.1	681.1	493.2	187.94	3.624		
10,700.0	7,225.0	10,621.3	7,051.0	99.4	99.4	-75.37	1,533.2	3,295.1	681.1	487.8	193.28	3.524		
10,800.0	7,225.0	10,721.3	7,051.0	102.2	102.1	-75.37	1,533.2	3,395.1	681.1	482.5	198.62	3.429		
10,900.0	7,225.0	10,821.3	7,051.0	104.9	104.8	-75.37	1,533.2	3,495.1	681.1	477.2	203.97	3.339		
11,000.0	7,225.0	10,921.3	7,051.0	107.7	107.6	-75.37	1,533.2	3,595.1	681.1	471.8	209.33	3.254		
11,100.0	7,225.0	11,021.3	7,051.0	110.4	110.3	-75.37	1,533.2	3,695.1	681.1	466.4	214.69	3.173		
11,200.0	7,225.0	11,121.3	7,051.0	113.2	113.1	-75.37	1,533.2	3,795.1	681.1	461.1	220.05	3.095		
11,300.0	7,225.0	11,221.3	7,051.0	116.0	115.8	-75.37	1,533.2	3,895.1	681.1	455.7	225.42	3.022		
11,400.0	7,225.0	11,321.3	7,051.0	118.7	118.6	-75.37	1,533.2	3,995.1	681.1	450.3	230.79	2.951		
11,500.0	7,225.0	11,421.3	7,051.0	121.5	121.3	-75.37	1,533.2	4,095.1	681.1	445.0	236.17	2.884		
11,600.0	7,225.0	11,521.3	7,051.0	124.3	124.1	-75.37	1,533.2	4,195.1	681.1	439.6	241.54	2.820		
11,700.0	7,225.0	11,621.3	7,051.0	127.1	126.8	-75.37	1,533.2	4,295.1	681.1	434.2	246.93	2.758		
11,800.0	7,225.0	11,721.3	7,051.0	129.8	129.6	-75.37	1,533.2	4,395.1	681.1	428.8	252.31	2.700		
11,900.0	7,225.0	11,821.3	7,051.0	132.6	132.4	-75.37	1,533.2	4,495.1	681.1	423.4	257.70	2.643		
12,000.0	7,225.0	11,921.3	7,051.0	135.4	135.1	-75.37	1,533.2	4,595.1	681.1	418.0	263.09	2.589		
12,100.0	7,225.0	12,021.3	7,051.0	138.2	137.9	-75.37	1,533.2	4,695.1	681.1	412.6	268.48	2.537		
12,200.0	7,225.0	12,121.3	7,051.0	140.9	140.7	-75.37	1,533.2	4,795.1	681.1	407.3	273.87	2.487		
12,300.0	7,225.0	12,221.3	7,051.0	143.7	143.4	-75.37	1,533.2	4,895.1	681.1	401.9	279.27	2.439		
12,400.0	7,225.0	12,321.3	7,051.0	146.5	146.2	-75.37	1,533.2	4,995.1	681.1	396.5	284.67	2.393		
12,500.0	7,225.0	12,421.3	7,051.0	149.3	149.0	-75.37	1,533.2	5,095.1	681.1	391.1	290.07	2.348		
12,600.0	7,225.0	12,521.3	7,051.0	152.1	151.7	-75.37	1,533.2	5,195.1	681.1	385.7	295.47	2.305		
12,642.1	7,225.0	12,563.4	7,051.0	153.2	152.9	-75.37	1,533.2	5,237.2	681.1	383.4	297.75	2.288 SF		

CC - Min centre to center distance or convergent point, SF - min separation factor, ES - min ellipse separation

Company:	Synergy Resources	Local Co-ordinate Reference:	Well SRC Kelly Farms A-4-3CHZ
Project:	SEC.4-T5N-R66W	TVD Reference:	WELL @ 4767.0ft (Original Well Elev)
Reference Site:	SRC Kelly Farms Pad Sec.4-T5N-R66W	MD Reference:	WELL @ 4767.0ft (Original Well Elev)
Site Error:	0.0ft	North Reference:	True
Reference Well:	SRC Kelly Farms A-4-3CHZ	Survey Calculation Method:	Minimum Curvature
Well Error:	0.0ft	Output errors are at	2.00 sigma
Reference Wellbore	Wellbore #1	Database:	Landmark
Reference Design:	Plan #1 (5-20-13)	Offset TVD Reference:	Offset Datum

Offset Design												Offset Site Error:	0.0 ft
Survey Program: 0-MWDD												Offset Well Error:	0.0 ft
Reference		Offset		Semi Major Axis			Distance						
Measured Depth (ft)	Vertical Depth (ft)	Measured Depth (ft)	Vertical Depth (ft)	Reference (ft)	Offset (ft)	Highside Toolface (°)	Offset Wellbore Centre +N/-S (ft)	+E/-W (ft)	Between Centres (ft)	Between Ellipses (ft)	Minimum Separation (ft)	Separation Factor	Warning
5,100.0	5,029.0	5,112.4	4,947.9	18.3	22.6	25.90	951.8	-310.3	263.3	234.6	28.66	9.185	
5,200.0	5,127.2	5,211.4	5,041.6	18.7	23.3	25.37	982.2	-320.0	277.3	248.1	29.20	9.498	
5,300.0	5,225.5	5,310.4	5,135.3	19.1	23.9	24.89	1,012.5	-329.8	291.4	261.7	29.75	9.797	
5,400.0	5,323.7	5,409.3	5,229.0	19.5	24.5	24.46	1,042.9	-339.5	305.5	275.2	30.29	10.085	
5,500.0	5,422.0	5,514.0	5,328.3	19.9	25.2	24.07	1,074.5	-349.6	319.2	288.4	30.84	10.349	
5,600.0	5,520.2	5,625.5	5,435.1	20.3	25.7	23.88	1,104.9	-359.3	329.7	298.3	31.40	10.501	
5,700.0	5,618.4	5,737.8	5,543.8	20.7	26.1	23.92	1,131.4	-367.8	336.5	304.5	31.99	10.519	
5,800.0	5,716.7	5,850.4	5,654.0	21.2	26.5	24.18	1,153.9	-375.1	339.5	306.9	32.61	10.411	
5,900.0	5,815.0	5,963.1	5,765.0	21.5	26.9	24.62	1,172.3	-381.0	339.3	306.0	33.24	10.208	
6,000.0	5,913.8	6,075.7	5,876.6	21.8	27.2	25.05	1,186.5	-385.5	338.0	304.3	33.74	10.019	
6,100.0	6,013.1	6,188.3	5,988.6	22.1	27.4	25.43	1,196.5	-388.7	336.2	302.1	34.17	9.841	
6,200.0	6,112.8	6,300.7	6,100.9	22.3	27.6	25.76	1,202.3	-390.6	333.9	299.4	34.53	9.671	
6,300.0	6,212.7	6,411.5	6,211.7	22.4	27.7	26.04	1,203.9	-391.1	331.0	296.2	34.81	9.511	
6,400.0	6,312.7	6,511.5	6,311.7	22.6	27.8	1.55	1,203.9	-391.1	329.8	281.8	48.02	6.868	
6,404.7	6,317.4	6,516.2	6,316.4	22.6	27.8	1.55	1,203.9	-391.1	329.8	281.8	48.03	6.867	
6,500.0	6,412.7	6,610.2	6,410.3	22.7	27.9	2.24	1,203.9	-387.1	330.0	281.8	48.13	6.856	
6,600.0	6,512.7	6,706.0	6,504.5	22.8	27.9	-84.92	1,203.9	-370.7	331.1	294.6	36.52	9.066	
6,700.0	6,612.3	6,798.0	6,592.3	22.9	27.9	-81.12	1,203.9	-343.2	333.9	296.2	37.74	8.848	
6,800.0	6,709.9	6,887.7	6,673.8	22.9	27.9	-77.58	1,203.9	-305.8	338.0	299.3	38.68	8.739	
6,900.0	6,803.6	6,975.4	6,748.3	22.9	27.8	-74.35	1,203.9	-259.7	342.9	303.7	39.23	8.740	
7,000.0	6,891.6	7,061.4	6,815.3	22.8	27.8	-71.47	1,203.9	-205.9	348.3	308.9	39.40	8.840	
7,100.0	6,972.1	7,145.9	6,874.5	22.7	27.7	-68.97	1,203.9	-145.7	353.8	314.5	39.26	9.011	
7,200.0	7,043.6	7,229.2	6,925.5	22.6	27.6	-66.87	1,203.9	-79.9	359.0	320.0	39.00	9.206	
7,300.0	7,104.7	7,311.5	6,968.1	22.5	27.6	-65.16	1,203.9	-9.4	363.7	324.8	38.85	9.361	
7,400.0	7,154.2	7,393.1	7,002.0	22.4	27.5	-63.86	1,203.9	64.7	367.5	328.4	39.09	9.401	
7,500.0	7,191.1	7,474.2	7,027.1	22.4	27.5	-62.94	1,203.9	141.7	370.3	330.4	39.97	9.266	
7,600.0	7,214.8	7,554.9	7,043.4	22.4	27.5	-62.42	1,203.9	220.7	372.0	330.4	41.65	8.931	
7,700.0	7,224.7	7,635.4	7,050.6	23.2	27.6	-62.29	1,203.9	300.9	372.4	328.3	44.13	8.440	
7,800.0	7,225.0	7,729.6	7,051.0	24.8	28.0	-62.31	1,203.9	395.1	372.3	325.1	47.22	7.886	
7,900.0	7,225.0	7,829.6	7,051.0	26.8	28.8	-62.31	1,203.9	495.1	372.3	321.7	50.63	7.354	
8,000.0	7,225.0	7,929.6	7,051.0	28.8	30.3	-62.31	1,203.9	595.1	372.3	318.0	54.30	6.857	
8,100.0	7,225.0	8,029.6	7,051.0	31.0	32.2	-62.31	1,203.9	695.1	372.3	314.2	58.17	6.401	
8,200.0	7,225.0	8,129.6	7,051.0	33.3	34.3	-62.31	1,203.9	795.1	372.3	310.1	62.21	5.986	
8,300.0	7,225.0	8,229.6	7,051.0	35.7	36.5	-62.31	1,203.9	895.1	372.3	306.0	66.38	5.609	
8,400.0	7,225.0	8,329.6	7,051.0	38.1	38.9	-62.31	1,203.9	995.1	372.3	301.7	70.66	5.269	
8,500.0	7,225.0	8,429.6	7,051.0	40.6	41.3	-62.31	1,203.9	1,095.1	372.3	297.3	75.04	4.962	
8,600.0	7,225.0	8,529.6	7,051.0	43.1	43.7	-62.31	1,203.9	1,195.1	372.3	292.9	79.49	4.684	
8,700.0	7,225.0	8,629.6	7,051.0	45.6	46.2	-62.31	1,203.9	1,295.1	372.3	288.3	84.00	4.432	
8,800.0	7,225.0	8,729.6	7,051.0	48.2	48.8	-62.31	1,203.9	1,395.1	372.3	283.8	88.58	4.204	
8,900.0	7,225.0	8,829.6	7,051.0	50.8	51.3	-62.31	1,203.9	1,495.1	372.3	279.2	93.19	3.995	
9,000.0	7,225.0	8,929.6	7,051.0	53.4	53.9	-62.31	1,203.9	1,595.1	372.3	274.5	97.85	3.805	
9,100.0	7,225.0	9,029.6	7,051.0	56.0	56.5	-62.31	1,203.9	1,695.1	372.3	269.8	102.54	3.631	
9,200.0	7,225.0	9,129.6	7,051.0	58.7	59.1	-62.31	1,203.9	1,795.1	372.3	265.1	107.27	3.471	
9,300.0	7,225.0	9,229.6	7,051.0	61.3	61.8	-62.31	1,203.9	1,895.1	372.3	260.3	112.02	3.324	
9,400.0	7,225.0	9,329.6	7,051.0	64.0	64.4	-62.31	1,203.9	1,995.1	372.3	255.6	116.79	3.188	
9,500.0	7,225.0	9,429.6	7,051.0	66.7	67.1	-62.31	1,203.9	2,095.1	372.3	250.8	121.58	3.063	
9,600.0	7,225.0	9,529.6	7,051.0	69.4	69.8	-62.31	1,203.9	2,195.1	372.3	246.0	126.39	2.946	
9,700.0	7,225.0	9,629.6	7,051.0	72.1	72.5	-62.31	1,203.9	2,295.1	372.3	241.1	131.22	2.838	
9,800.0	7,225.0	9,729.6	7,051.0	74.8	75.2	-62.31	1,203.9	2,395.1	372.3	236.3	136.06	2.737	
9,900.0	7,225.0	9,829.6	7,051.0	77.5	77.9	-62.31	1,203.9	2,495.1	372.3	231.4	140.91	2.642	
10,000.0	7,225.0	9,929.6	7,051.0	80.2	80.6	-62.31	1,203.9	2,595.1	372.3	226.6	145.78	2.554	
10,100.0	7,225.0	10,029.6	7,051.0	82.9	83.3	-62.31	1,203.9	2,695.1	372.3	221.7	150.65	2.472	

CC - Min centre to center distance or convergent point, SF - min separation factor, ES - min ellipse separation

Company:	Synergy Resources	Local Co-ordinate Reference:	Well SRC Kelly Farms A-4-3CHZ
Project:	SEC.4-T5N-R66W	TVD Reference:	WELL @ 4767.0ft (Original Well Elev)
Reference Site:	SRC Kelly Farms Pad Sec.4-T5N-R66W	MD Reference:	WELL @ 4767.0ft (Original Well Elev)
Site Error:	0.0ft	North Reference:	True
Reference Well:	SRC Kelly Farms A-4-3CHZ	Survey Calculation Method:	Minimum Curvature
Well Error:	0.0ft	Output errors are at	2.00 sigma
Reference Wellbore	Wellbore #1	Database:	Landmark
Reference Design:	Plan #1 (5-20-13)	Offset TVD Reference:	Offset Datum

Offset Design													Offset Site Error:	0.0 ft
Survey Program: 0-MWD													Offset Well Error:	0.0 ft
Reference		Offset		Semi Major Axis			Distance						Warning	
Measured Depth (ft)	Vertical Depth (ft)	Measured Depth (ft)	Vertical Depth (ft)	Reference (ft)	Offset (ft)	Highside Toolface (°)	Offset Wellbore Centre +N/-S (ft)	+E/-W (ft)	Between Centres (ft)	Between Ellipses (ft)	Minimum Separation (ft)	Separation Factor		
10,200.0	7,225.0	10,129.6	7,051.0	85.7	86.0	-62.31	1,203.9	2,795.1	372.3	216.8	155.54	2.394		
10,300.0	7,225.0	10,229.6	7,051.0	88.4	88.7	-62.31	1,203.9	2,895.1	372.3	211.9	160.43	2.321		
10,400.0	7,225.0	10,329.6	7,051.0	91.2	91.5	-62.31	1,203.9	2,995.1	372.3	207.0	165.33	2.252		
10,500.0	7,225.0	10,429.6	7,051.0	93.9	94.2	-62.31	1,203.9	3,095.1	372.3	202.1	170.24	2.187		
10,600.0	7,225.0	10,529.6	7,051.0	96.7	97.0	-62.31	1,203.9	3,195.1	372.3	197.2	175.16	2.126		
10,700.0	7,225.0	10,629.6	7,051.0	99.4	99.7	-62.31	1,203.9	3,295.1	372.3	192.3	180.08	2.068		
10,800.0	7,225.0	10,729.6	7,051.0	102.2	102.4	-62.31	1,203.9	3,395.1	372.3	187.3	185.00	2.013		
10,900.0	7,225.0	10,829.6	7,051.0	104.9	105.2	-62.31	1,203.9	3,495.1	372.3	182.4	189.94	1.960		
11,000.0	7,225.0	10,929.6	7,051.0	107.7	107.9	-62.31	1,203.9	3,595.1	372.3	177.5	194.87	1.911		
11,100.0	7,225.0	11,029.6	7,051.0	110.4	110.7	-62.31	1,203.9	3,695.1	372.3	172.5	199.81	1.863		
11,200.0	7,225.0	11,129.6	7,051.0	113.2	113.5	-62.31	1,203.9	3,795.1	372.3	167.6	204.76	1.818		
11,300.0	7,225.0	11,229.6	7,051.0	116.0	116.2	-62.31	1,203.9	3,895.1	372.3	162.6	209.71	1.776		
11,400.0	7,225.0	11,329.6	7,051.0	118.7	119.0	-62.31	1,203.9	3,995.1	372.3	157.7	214.66	1.735		
11,500.0	7,225.0	11,429.6	7,051.0	121.5	121.8	-62.31	1,203.9	4,095.1	372.3	152.7	219.62	1.695		
11,600.0	7,225.0	11,529.6	7,051.0	124.3	124.5	-62.31	1,203.9	4,195.1	372.3	147.8	224.58	1.658		
11,700.0	7,225.0	11,629.6	7,051.0	127.1	127.3	-62.31	1,203.9	4,295.1	372.3	142.8	229.54	1.622		
11,800.0	7,225.0	11,729.6	7,051.0	129.8	130.1	-62.31	1,203.9	4,395.1	372.3	137.8	234.50	1.588		
11,900.0	7,225.0	11,829.6	7,051.0	132.6	132.8	-62.31	1,203.9	4,495.1	372.3	132.9	239.47	1.555		
12,000.0	7,225.0	11,929.6	7,051.0	135.4	135.6	-62.31	1,203.9	4,595.1	372.3	127.9	244.44	1.523		
12,100.0	7,225.0	12,029.6	7,051.0	138.2	138.4	-62.31	1,203.9	4,695.1	372.3	122.9	249.41	1.493 Level 3		
12,200.0	7,225.0	12,129.6	7,051.0	140.9	141.2	-62.31	1,203.9	4,795.1	372.3	118.0	254.38	1.464 Level 3		
12,300.0	7,225.0	12,229.6	7,051.0	143.7	143.9	-62.31	1,203.9	4,895.1	372.3	113.0	259.36	1.436 Level 3		
12,400.0	7,225.0	12,329.6	7,051.0	146.5	146.7	-62.31	1,203.9	4,995.1	372.3	108.0	264.33	1.409 Level 3		
12,500.0	7,225.0	12,429.6	7,051.0	149.3	149.5	-62.31	1,203.9	5,095.1	372.3	103.0	269.31	1.383 Level 3		
12,600.0	7,225.0	12,529.6	7,051.0	152.1	152.3	-62.31	1,203.9	5,195.1	372.3	98.0	274.29	1.357 Level 3		
12,642.1	7,225.0	12,571.7	7,051.0	153.2	153.4	-62.31	1,203.9	5,237.2	372.3	95.9	276.39	1.347 Level 3, SF		

Company:	Synergy Resources	Local Co-ordinate Reference:	Well SRC Kelly Farms A-4-3CHZ
Project:	SEC.4-T5N-R66W	TVD Reference:	WELL @ 4767.0ft (Original Well Elev)
Reference Site:	SRC Kelly Farms Pad Sec.4-T5N-R66W	MD Reference:	WELL @ 4767.0ft (Original Well Elev)
Site Error:	0.0ft	North Reference:	True
Reference Well:	SRC Kelly Farms A-4-3CHZ	Survey Calculation Method:	Minimum Curvature
Well Error:	0.0ft	Output errors are at	2.00 sigma
Reference Wellbore	Wellbore #1	Database:	Landmark
Reference Design:	Plan #1 (5-20-13)	Offset TVD Reference:	Offset Datum

Offset Design													Offset Site Error:	0.0 ft
Survey Program: 0-MWD													Offset Well Error:	0.0 ft
Reference		Offset		Semi Major Axis			Distance							Warning
Measured Depth (ft)	Vertical Depth (ft)	Measured Depth (ft)	Vertical Depth (ft)	Reference (ft)	Offset (ft)	Highside Toolface (°)	Offset Wellbore Centre +N/-S (ft)	+E/-W (ft)	Between Centres (ft)	Between Ellipses (ft)	Minimum Separation (ft)	Separation Factor		
0.0	0.0	0.0	0.0	0.0	0.0	168.48	-21.9	4.5	22.3					
100.0	100.0	99.0	99.0	0.1	0.1	168.48	-21.9	4.5	22.3	22.1	0.22	99.766		
200.0	200.0	199.0	199.0	0.3	0.3	168.48	-21.9	4.5	22.3	21.6	0.67	33.200		
300.0	300.0	299.0	299.0	0.6	0.6	168.48	-21.9	4.5	22.3	21.2	1.12	19.893		
400.0	400.0	399.0	399.0	0.8	0.8	168.48	-21.9	4.5	22.3	20.7	1.57	14.201		
500.0	500.0	499.0	499.0	1.0	1.0	168.48	-21.9	4.5	22.3	20.3	2.02	11.042		
600.0	600.0	599.0	599.0	1.2	1.2	168.48	-21.9	4.5	22.3	19.8	2.47	9.033		
700.0	700.0	699.0	699.0	1.5	1.5	168.48	-21.9	4.5	22.3	19.4	2.92	7.642 CC, ES		
800.0	800.0	799.0	799.0	1.7	1.7	-167.86	-21.9	4.5	24.0	20.6	3.37	7.128		
900.0	899.8	899.5	899.5	1.9	1.9	-167.53	-21.0	3.0	28.0	24.1	3.81	7.336		
1,000.0	999.5	1,000.1	999.9	2.1	2.1	-164.09	-18.3	-1.6	33.0	28.7	4.25	7.760		
1,100.0	1,098.7	1,100.6	1,100.0	2.4	2.4	-159.05	-13.8	-9.1	39.3	34.6	4.70	8.360		
1,200.0	1,197.5	1,200.5	1,199.3	2.7	2.6	-154.12	-7.9	-19.1	47.6	42.4	5.19	9.169		
1,300.0	1,295.8	1,299.9	1,298.0	3.0	2.9	-151.75	-1.8	-29.4	58.4	52.7	5.71	10.228		
1,400.0	1,394.0	1,399.3	1,396.6	3.3	3.1	-150.25	4.2	-39.6	69.4	63.2	6.25	11.111		
1,500.0	1,492.2	1,498.6	1,495.3	3.7	3.4	-149.16	10.3	-49.8	80.5	73.7	6.81	11.830		
1,600.0	1,590.5	1,598.0	1,593.9	4.1	3.7	-148.34	16.4	-60.1	91.6	84.3	7.38	12.421		
1,700.0	1,688.7	1,697.4	1,692.6	4.5	4.0	-147.70	22.4	-70.3	102.8	94.8	7.96	12.913		
1,800.0	1,787.0	1,796.8	1,791.2	4.8	4.3	-147.18	28.5	-80.5	113.9	105.4	8.55	13.327		
1,900.0	1,885.2	1,896.1	1,889.9	5.2	4.6	-146.75	34.6	-90.8	125.1	115.9	9.14	13.678		
2,000.0	1,983.5	1,995.5	1,988.6	5.6	4.9	-146.40	40.6	-101.0	136.3	126.5	9.75	13.980		
2,100.0	2,081.7	2,094.9	2,087.2	6.0	5.2	-146.09	46.7	-111.2	147.4	137.1	10.35	14.241		
2,200.0	2,179.9	2,194.3	2,185.9	6.4	5.5	-145.83	52.7	-121.5	158.6	147.6	10.96	14.468		
2,300.0	2,278.2	2,293.6	2,284.5	6.8	5.8	-145.61	58.8	-131.7	169.8	158.2	11.57	14.668		
2,400.0	2,376.4	2,393.0	2,383.2	7.2	6.1	-145.41	64.9	-141.9	180.9	168.7	12.19	14.845		
2,500.0	2,474.7	2,492.4	2,481.8	7.6	6.4	-145.24	70.9	-152.2	192.1	179.3	12.81	15.002		
2,600.0	2,572.9	2,591.7	2,580.5	8.0	6.7	-145.08	77.0	-162.4	203.3	189.9	13.42	15.142		
2,700.0	2,671.2	2,691.1	2,679.2	8.4	7.0	-144.94	83.1	-172.6	214.5	200.4	14.05	15.269		
2,800.0	2,769.4	2,790.5	2,777.8	8.8	7.3	-144.82	89.1	-182.9	225.6	211.0	14.67	15.383		
2,900.0	2,867.6	2,889.9	2,876.5	9.2	7.6	-144.70	95.2	-193.1	236.8	221.5	15.29	15.487		
3,000.0	2,965.9	2,989.2	2,975.1	9.6	8.0	-144.60	101.3	-203.3	248.0	232.1	15.92	15.581		
3,100.0	3,064.1	3,088.6	3,073.8	10.0	8.3	-144.50	107.3	-213.6	259.2	242.6	16.54	15.668		
3,200.0	3,162.4	3,188.0	3,172.4	10.5	8.6	-144.42	113.4	-223.8	270.4	253.2	17.17	15.747		
3,300.0	3,260.6	3,287.3	3,271.1	10.9	8.9	-144.34	119.4	-234.0	281.6	263.8	17.80	15.820		
3,400.0	3,358.9	3,386.7	3,369.8	11.3	9.2	-144.26	125.5	-244.3	292.7	274.3	18.43	15.887		
3,500.0	3,457.1	3,486.1	3,468.4	11.7	9.5	-144.20	131.6	-254.5	303.9	284.9	19.06	15.950		
3,600.0	3,555.3	3,585.5	3,567.1	12.1	9.8	-144.13	137.6	-264.7	315.1	295.4	19.69	16.008		
3,700.0	3,653.6	3,684.8	3,665.7	12.5	10.1	-144.07	143.7	-275.0	326.3	306.0	20.32	16.062		
3,800.0	3,751.8	3,784.2	3,764.4	12.9	10.4	-144.02	149.8	-285.2	337.5	316.5	20.95	16.112		
3,900.0	3,850.1	3,883.6	3,863.0	13.3	10.8	-143.97	155.8	-295.5	348.7	327.1	21.58	16.159		
4,000.0	3,948.3	3,982.9	3,961.7	13.7	11.1	-143.92	161.9	-305.7	359.9	337.7	22.21	16.203		
4,100.0	4,046.6	4,082.3	4,060.4	14.1	11.4	-143.87	168.0	-315.9	371.0	348.2	22.84	16.245		
4,200.0	4,144.8	4,181.7	4,159.0	14.6	11.7	-143.83	174.0	-326.2	382.2	358.8	23.47	16.284		
4,300.0	4,243.0	4,281.1	4,257.7	15.0	12.0	-143.79	180.1	-336.4	393.4	369.3	24.11	16.320		
4,400.0	4,341.3	4,380.4	4,356.3	15.4	12.3	-143.75	186.2	-346.6	404.6	379.9	24.74	16.355		
4,500.0	4,439.5	4,479.8	4,455.0	15.8	12.6	-143.71	192.2	-356.9	415.8	390.4	25.37	16.387		
4,600.0	4,537.8	4,579.2	4,553.6	16.2	13.0	-143.68	198.3	-367.1	427.0	401.0	26.01	16.418		
4,700.0	4,636.0	4,678.5	4,652.3	16.6	13.3	-143.65	204.3	-377.3	438.2	411.5	26.64	16.448		
4,800.0	4,734.3	4,773.2	4,746.5	17.0	13.5	-143.79	209.4	-385.9	449.9	422.7	27.16	16.561		
4,900.0	4,832.5	4,867.3	4,840.3	17.4	13.7	-144.29	212.9	-391.7	462.6	435.0	27.61	16.755		
5,000.0	4,930.7	4,960.8	4,933.7	17.9	13.8	-145.11	214.7	-394.9	476.6	448.6	27.99	17.026		
5,100.0	5,029.0	5,055.1	5,028.0	18.3	14.0	-146.21	215.1	-395.5	491.8	463.5	28.32	17.364		

CC - Min centre to center distance or convergent point, SF - min separation factor, ES - min ellipse separation

SRC Kelly Farms Pad Sec.4-T5N-R66W - SRC Kelly Farms 22-4-3CHZ - Wellbore #1 - Plan #1 (5-20-1)												Offset Site Error:	0.0 ft
Survey Program: 0-MWD												Offset Well Error:	0.0 ft
Reference		Offset		Semi Major Axis			Distance					Warning	
Measured Depth (ft)	Vertical Depth (ft)	Measured Depth (ft)	Vertical Depth (ft)	Reference (ft)	Offset (ft)	Highside Toolface (°)	Offset Wellbore Centre +N/-S (ft)	+E/-W (ft)	Between Centres (ft)	Between Ellipses (ft)	Minimum Separation (ft)		Separation Factor
5,200.0	5,127.2	5,153.3	5,126.2	18.7	14.1	-147.38	215.1	-395.5	507.5	478.8	28.66	17.710	
5,300.0	5,225.5	5,251.6	5,224.5	19.1	14.3	-148.47	215.1	-395.5	523.4	494.4	29.00	18.047	
5,400.0	5,323.7	5,349.8	5,322.7	19.5	14.5	-149.50	215.1	-395.5	539.4	510.1	29.35	18.380	
5,500.0	5,422.0	5,448.1	5,421.0	19.9	14.7	-150.48	215.1	-395.5	555.7	526.0	29.71	18.707	
5,600.0	5,520.2	5,546.3	5,519.2	20.3	14.8	-151.39	215.1	-395.5	572.1	542.0	30.06	19.028	
5,700.0	5,618.4	5,644.6	5,617.4	20.7	15.0	-152.26	215.1	-395.5	588.6	558.1	30.43	19.343	
5,800.0	5,716.7	5,742.8	5,715.7	21.2	15.2	-153.08	215.1	-395.5	605.2	574.4	30.80	19.652	
5,900.0	5,815.0	5,841.1	5,814.0	21.5	15.4	-153.91	215.1	-395.5	621.6	590.4	31.17	19.942	
6,000.0	5,913.8	5,939.9	5,912.8	21.8	15.5	-154.63	215.1	-395.5	635.3	603.8	31.50	20.168	
6,100.0	6,013.1	6,039.3	6,012.1	22.1	15.7	-155.17	215.1	-395.5	646.0	614.1	31.82	20.300	
6,200.0	6,112.8	6,138.9	6,111.8	22.3	15.9	-155.53	215.1	-395.5	653.5	621.4	32.13	20.341	
6,300.0	6,212.7	6,238.8	6,211.7	22.4	16.1	-155.74	215.1	-395.5	657.9	625.4	32.41	20.295	
6,400.0	6,312.7	6,338.8	6,311.7	22.6	16.3	-179.61	215.1	-395.5	659.1	623.0	36.04	18.289	
6,500.0	6,412.7	6,438.8	6,411.7	22.7	16.5	-179.61	215.1	-395.5	659.1	622.7	36.38	18.116	
6,568.1	6,480.7	6,506.8	6,479.7	22.8	16.6	89.62	215.1	-395.5	659.1	625.7	33.33	19.774	
6,600.0	6,512.7	6,538.7	6,511.6	22.8	16.7	89.61	215.1	-395.5	659.1	625.6	33.45	19.705	
6,700.0	6,612.3	6,638.1	6,610.6	22.9	16.8	89.59	215.1	-387.8	659.1	625.4	33.67	19.572	
6,800.0	6,709.9	6,737.4	6,707.6	22.9	16.8	89.58	215.1	-366.5	659.1	625.3	33.76	19.523	
6,900.0	6,803.6	6,836.8	6,800.6	22.9	16.8	89.58	215.1	-332.1	659.1	625.3	33.75	19.527	
7,000.0	6,891.6	6,936.1	6,888.0	22.8	16.8	89.58	215.1	-285.0	659.1	625.3	33.73	19.537	
7,100.0	6,972.1	7,035.4	6,968.1	22.7	16.7	89.59	215.1	-226.4	659.1	625.2	33.83	19.480	
7,200.0	7,043.6	7,134.8	7,039.3	22.6	16.8	89.61	215.1	-157.2	659.1	624.9	34.20	19.271	
7,300.0	7,104.7	7,234.2	7,100.3	22.5	17.1	89.64	215.1	-78.8	659.1	624.1	35.00	18.828	
7,400.0	7,154.2	7,333.6	7,149.8	22.4	17.8	89.67	215.1	7.3	659.1	622.7	36.38	18.115	
7,500.0	7,191.1	7,433.1	7,187.0	22.4	18.8	89.72	215.1	99.6	659.1	620.7	38.41	17.161	
7,600.0	7,214.8	7,532.7	7,211.1	22.4	20.1	89.76	215.1	196.1	659.1	618.0	41.05	16.055	
7,700.0	7,224.7	7,632.4	7,221.5	23.2	21.7	89.81	215.1	295.1	659.1	614.8	44.21	14.908	
7,754.2	7,225.9	7,686.5	7,222.0	24.0	22.7	89.75	215.1	349.2	659.1	613.0	46.11	14.294	
7,800.0	7,225.0	7,732.3	7,222.0	24.8	23.6	89.83	215.1	395.1	659.1	611.3	47.78	13.793	
7,900.0	7,225.0	7,832.3	7,222.0	26.8	25.5	89.83	215.1	495.1	659.1	607.4	51.70	12.747	
8,000.0	7,225.0	7,932.3	7,222.0	28.8	27.7	89.83	215.1	595.1	659.1	603.1	55.92	11.787	
8,100.0	7,225.0	8,032.3	7,222.0	31.0	29.9	89.83	215.1	695.1	659.1	598.7	60.36	10.919	
8,200.0	7,225.0	8,132.3	7,222.0	33.3	32.3	89.83	215.1	795.1	659.1	594.1	64.98	10.143	
8,300.0	7,225.0	8,232.3	7,222.0	35.7	34.7	89.83	215.1	895.1	659.1	589.3	69.75	9.449	
8,400.0	7,225.0	8,332.3	7,222.0	38.1	37.1	89.83	215.1	995.1	659.1	584.4	74.64	8.830	
8,500.0	7,225.0	8,432.3	7,222.0	40.6	39.6	89.83	215.1	1,095.1	659.1	579.4	79.62	8.278	
8,600.0	7,225.0	8,532.3	7,222.0	43.1	42.2	89.83	215.1	1,195.1	659.1	574.4	84.68	7.783	
8,700.0	7,225.0	8,632.3	7,222.0	45.6	44.7	89.83	215.1	1,295.1	659.1	569.2	89.81	7.338	
8,800.0	7,225.0	8,732.3	7,222.0	48.2	47.3	89.83	215.1	1,395.1	659.1	564.1	94.99	6.938	
8,900.0	7,225.0	8,832.3	7,222.0	50.8	50.0	89.83	215.1	1,495.1	659.1	558.8	100.22	6.576	
9,000.0	7,225.0	8,932.3	7,222.0	53.4	52.6	89.83	215.1	1,595.1	659.1	553.6	105.49	6.247	
9,100.0	7,225.0	9,032.3	7,222.0	56.0	55.3	89.83	215.1	1,695.1	659.1	548.3	110.80	5.948	
9,200.0	7,225.0	9,132.3	7,222.0	58.7	57.9	89.83	215.1	1,795.1	659.1	542.9	116.13	5.675	
9,300.0	7,225.0	9,232.3	7,222.0	61.3	60.6	89.83	215.1	1,895.1	659.1	537.6	121.49	5.425	
9,400.0	7,225.0	9,332.3	7,222.0	64.0	63.3	89.83	215.1	1,995.1	659.1	532.2	126.87	5.195	
9,500.0	7,225.0	9,432.3	7,222.0	66.7	66.0	89.83	215.1	2,095.1	659.1	526.8	132.27	4.983	
9,600.0	7,225.0	9,532.3	7,222.0	69.4	68.7	89.83	215.1	2,195.1	659.1	521.4	137.69	4.787	
9,700.0	7,225.0	9,632.3	7,222.0	72.1	71.5	89.83	215.1	2,295.1	659.1	515.9	143.12	4.605	
9,800.0	7,225.0	9,732.3	7,222.0	74.8	74.2	89.83	215.1	2,395.1	659.1	510.5	148.57	4.436	
9,900.0	7,225.0	9,832.3	7,222.0	77.5	76.9	89.83	215.1	2,495.1	659.1	505.0	154.03	4.279	
10,000.0	7,225.0	9,932.3	7,222.0	80.2	79.6	89.83	215.1	2,595.1	659.1	499.6	159.50	4.132	
10,100.0	7,225.0	10,032.3	7,222.0	82.9	82.4	89.83	215.1	2,695.1	659.1	494.1	164.98	3.995	

SRK Kelly Farms Pad Sec.4-T5N-R66W - SRK Kelly Farms 22-4-3CHZ - Wellbore #1 - Plan #1 (5-20-1)													Offset Site Error:	0.0 ft
Survey Program: 0-MWD													Offset Well Error:	0.0 ft
Reference		Offset		Semi Major Axis			Distance							
Measured Depth	Vertical Depth	Measured Depth	Vertical Depth	Reference	Offset	Highside Toolface	Offset Wellbore Centre		Between Centres	Between Ellipses	Minimum Separation	Separation Factor	Warning	
(ft)	(ft)	(ft)	(ft)	(ft)	(ft)	(°)	+N/-S (ft)	+E/-W (ft)	(ft)	(ft)	(ft)			
10,200.0	7,225.0	10,132.3	7,222.0	85.7	85.1	89.83	215.1	2,795.1	659.1	488.6	170.46	3.866		
10,300.0	7,225.0	10,232.3	7,222.0	88.4	87.9	89.83	215.1	2,895.1	659.1	483.1	175.96	3.745		
10,400.0	7,225.0	10,332.3	7,222.0	91.2	90.6	89.83	215.1	2,995.1	659.1	477.6	181.46	3.632		
10,500.0	7,225.0	10,432.3	7,222.0	93.9	93.4	89.83	215.1	3,095.1	659.1	472.1	186.97	3.525		
10,600.0	7,225.0	10,532.3	7,222.0	96.7	96.2	89.83	215.1	3,195.1	659.1	466.6	192.49	3.424		
10,700.0	7,225.0	10,632.3	7,222.0	99.4	98.9	89.83	215.1	3,295.1	659.1	461.0	198.01	3.328		
10,800.0	7,225.0	10,732.3	7,222.0	102.2	101.7	89.83	215.1	3,395.1	659.1	455.5	203.54	3.238		
10,900.0	7,225.0	10,832.3	7,222.0	104.9	104.5	89.83	215.1	3,495.1	659.1	450.0	209.07	3.152		
11,000.0	7,225.0	10,932.3	7,222.0	107.7	107.2	89.83	215.1	3,595.1	659.1	444.5	214.61	3.071		
11,100.0	7,225.0	11,032.3	7,222.0	110.4	110.0	89.83	215.1	3,695.1	659.1	438.9	220.15	2.994		
11,200.0	7,225.0	11,132.3	7,222.0	113.2	112.8	89.83	215.1	3,795.1	659.1	433.4	225.69	2.920		
11,300.0	7,225.0	11,232.3	7,222.0	116.0	115.5	89.83	215.1	3,895.1	659.1	427.8	231.24	2.850		
11,400.0	7,225.0	11,332.3	7,222.0	118.7	118.3	89.83	215.1	3,995.1	659.1	422.3	236.79	2.783		
11,500.0	7,225.0	11,432.3	7,222.0	121.5	121.1	89.83	215.1	4,095.1	659.1	416.7	242.35	2.720		
11,600.0	7,225.0	11,532.3	7,222.0	124.3	123.9	89.83	215.1	4,195.1	659.1	411.2	247.90	2.659		
11,700.0	7,225.0	11,632.3	7,222.0	127.1	126.7	89.83	215.1	4,295.1	659.1	405.6	253.46	2.600		
11,800.0	7,225.0	11,732.3	7,222.0	129.8	129.4	89.83	215.1	4,395.1	659.1	400.0	259.02	2.544		
11,900.0	7,225.0	11,832.3	7,222.0	132.6	132.2	89.83	215.1	4,495.1	659.1	394.5	264.59	2.491		
12,000.0	7,225.0	11,932.3	7,222.0	135.4	135.0	89.83	215.1	4,595.1	659.1	388.9	270.15	2.440		
12,100.0	7,225.0	12,032.3	7,222.0	138.2	137.8	89.83	215.1	4,695.1	659.1	383.3	275.72	2.390		
12,200.0	7,225.0	12,132.3	7,222.0	140.9	140.6	89.83	215.1	4,795.1	659.1	377.8	281.29	2.343		
12,300.0	7,225.0	12,232.3	7,222.0	143.7	143.4	89.83	215.1	4,895.1	659.1	372.2	286.86	2.297		
12,400.0	7,225.0	12,332.3	7,222.0	146.5	146.2	89.83	215.1	4,995.1	659.1	366.6	292.44	2.254		
12,500.0	7,225.0	12,432.3	7,222.0	149.3	148.9	89.83	215.1	5,095.1	659.1	361.1	298.01	2.212		
12,554.1	7,225.0	12,486.5	7,222.0	150.8	150.5	89.83	215.1	5,149.2	659.1	358.0	301.03	2.189		
12,600.0	7,225.0	12,515.0	7,222.0	152.1	151.3	89.83	215.1	5,177.8	659.3	356.2	303.10	2.175		
12,642.1	7,225.0	12,515.0	7,222.0	153.2	151.3	89.83	215.1	5,177.8	661.7	357.5	304.28	2.175 SF		

SRC Kelly Farms Pad Sec.4-T5N-R66W - SRC Kelly Farms A-4-3NHZ - Wellbore #1 - Plan #1 (5-20-13)												Offset Site Error:	0.0 ft
Survey Program: 0-MWD												Offset Well Error:	0.0 ft
Reference		Offset		Semi Major Axis			Distance						Warning
Measured Depth (ft)	Vertical Depth (ft)	Measured Depth (ft)	Vertical Depth (ft)	Reference (ft)	Offset (ft)	Highside Toolface (°)	Offset Wellbore Centre +N/-S (ft)	+E/-W (ft)	Between Centres (ft)	Between Ellipses (ft)	Minimum Separation (ft)	Separation Factor	
0.0	0.0	0.0	0.0	0.0	0.0	-11.34	22.2	-4.5	22.7				
100.0	100.0	100.0	100.0	0.1	0.1	-11.34	22.2	-4.5	22.7	22.4	0.22	100.803	
200.0	200.0	200.0	200.0	0.3	0.3	-11.34	22.2	-4.5	22.7	22.0	0.67	33.601	
300.0	300.0	300.0	300.0	0.6	0.6	-11.34	22.2	-4.5	22.7	21.5	1.12	20.161	
400.0	400.0	400.0	400.0	0.8	0.8	-11.34	22.2	-4.5	22.7	21.1	1.57	14.400 CC, ES	
500.0	500.0	499.3	499.2	1.0	1.0	-13.13	23.6	-5.5	24.2	22.2	2.02	11.993	
600.0	600.0	598.3	598.1	1.2	1.2	-17.32	27.7	-8.6	29.0	26.6	2.47	11.748	
700.0	700.0	696.8	696.3	1.5	1.5	-21.85	34.4	-13.8	37.3	34.3	2.93	12.706	
800.0	800.0	794.9	793.6	1.7	1.7	-1.05	43.8	-21.0	47.2	43.9	3.38	13.983	
900.0	899.8	894.4	892.2	1.9	2.0	-4.06	54.7	-29.4	55.7	51.8	3.83	14.548	
1,000.0	999.5	994.3	991.1	2.1	2.3	-6.63	65.7	-37.8	60.8	56.5	4.27	14.217	
1,100.0	1,098.7	1,094.2	1,090.1	2.4	2.6	-9.30	76.7	-46.2	62.5	57.8	4.72	13.233	
1,200.0	1,197.5	1,194.1	1,189.0	2.7	3.0	-12.49	87.7	-54.6	61.0	55.8	5.18	11.775	
1,300.0	1,295.8	1,293.9	1,287.9	3.0	3.3	-16.61	98.7	-63.0	56.9	51.3	5.66	10.069	
1,400.0	1,394.0	1,393.8	1,386.7	3.3	3.6	-21.42	109.6	-71.4	53.0	46.8	6.16	8.601	
1,500.0	1,492.2	1,493.6	1,485.6	3.7	4.0	-26.95	120.6	-79.9	49.5	42.8	6.71	7.376	
1,600.0	1,590.5	1,593.4	1,584.4	4.1	4.3	-33.25	131.6	-88.3	46.5	39.2	7.32	6.355	
1,700.0	1,688.7	1,693.2	1,683.3	4.5	4.6	-40.31	142.6	-96.7	44.2	36.2	8.02	5.515	
1,800.0	1,787.0	1,793.0	1,782.2	4.8	5.0	-48.02	153.5	-105.1	42.6	33.8	8.80	4.842	
1,900.0	1,885.2	1,892.8	1,881.0	5.2	5.3	-56.17	164.5	-113.5	41.8	32.2	9.67	4.326	
1,938.6	1,923.2	1,931.4	1,919.2	5.4	5.4	-59.38	168.8	-116.7	41.8	31.7	10.02	4.167	
2,000.0	1,983.5	1,992.7	1,979.9	5.6	5.6	-64.45	175.5	-121.9	41.9	31.3	10.60	3.958	
2,100.0	2,081.7	2,092.5	2,078.7	6.0	6.0	-72.53	186.5	-130.3	42.9	31.4	11.54	3.719	
2,200.0	2,179.9	2,192.3	2,177.6	6.4	6.3	-80.11	197.4	-138.7	44.7	32.2	12.45	3.588	
2,300.0	2,278.2	2,292.1	2,276.4	6.8	6.6	-87.00	208.4	-147.1	47.2	33.8	13.32	3.541	
2,400.0	2,376.4	2,391.9	2,375.3	7.2	7.0	-93.12	219.4	-155.6	50.3	36.1	14.13	3.558	
2,500.0	2,474.7	2,491.7	2,474.1	7.6	7.3	-98.48	230.4	-164.0	53.9	39.0	14.88	3.619	
2,600.0	2,572.9	2,591.6	2,573.0	8.0	7.7	-103.14	241.4	-172.4	57.9	42.3	15.60	3.712	
2,700.0	2,671.2	2,691.4	2,671.8	8.4	8.0	-107.17	252.3	-180.8	62.2	46.0	16.27	3.825	
2,800.0	2,769.4	2,791.2	2,770.7	8.8	8.3	-110.66	263.3	-189.2	66.9	49.9	16.92	3.951	
2,900.0	2,867.6	2,891.0	2,869.5	9.2	8.7	-113.69	274.3	-197.6	71.7	54.1	17.55	4.084	
3,000.0	2,965.9	2,990.8	2,968.4	9.6	9.0	-116.33	285.3	-206.0	76.7	58.5	18.17	4.220	
3,100.0	3,064.1	3,090.6	3,067.2	10.0	9.4	-118.64	296.2	-214.4	81.8	63.1	18.78	4.357	
3,200.0	3,162.4	3,190.5	3,166.1	10.5	9.7	-120.68	307.2	-222.8	87.1	67.7	19.38	4.494	
3,300.0	3,260.6	3,290.3	3,265.0	10.9	10.0	-122.48	318.2	-231.3	92.5	72.5	19.98	4.628	
3,400.0	3,358.9	3,390.1	3,363.8	11.3	10.4	-124.08	329.2	-239.7	97.9	77.3	20.58	4.758	
3,500.0	3,457.1	3,489.9	3,462.7	11.7	10.7	-125.52	340.1	-248.1	103.4	82.3	21.17	4.885	
3,600.0	3,555.3	3,589.7	3,561.5	12.1	11.1	-126.81	351.1	-256.5	109.0	87.2	21.76	5.008	
3,700.0	3,653.6	3,689.5	3,660.4	12.5	11.4	-127.97	362.1	-264.9	114.6	92.3	22.36	5.127	
3,800.0	3,751.8	3,789.3	3,759.2	12.9	11.7	-129.02	373.1	-273.3	120.3	97.3	22.95	5.242	
3,900.0	3,850.1	3,889.2	3,858.1	13.3	12.1	-129.98	384.0	-281.7	126.0	102.4	23.54	5.352	
4,000.0	3,948.3	3,989.0	3,956.9	13.7	12.4	-130.86	395.0	-290.1	131.7	107.6	24.13	5.458	
4,100.0	4,046.6	4,088.8	4,055.8	14.1	12.8	-131.66	406.0	-298.5	137.5	112.8	24.72	5.561	
4,200.0	4,144.8	4,188.6	4,154.6	14.6	13.1	-132.40	417.0	-307.0	143.3	118.0	25.32	5.659	
4,300.0	4,243.0	4,288.4	4,253.5	15.0	13.4	-133.08	427.9	-315.4	149.1	123.2	25.91	5.754	
4,400.0	4,341.3	4,388.2	4,352.3	15.4	13.8	-133.70	438.9	-323.8	154.9	128.4	26.50	5.845	
4,500.0	4,439.5	4,488.1	4,451.2	15.8	14.1	-134.29	449.9	-332.2	160.7	133.6	27.10	5.932	
4,600.0	4,537.8	4,587.9	4,550.1	16.2	14.5	-134.83	460.9	-340.6	166.6	138.9	27.69	6.016	
4,700.0	4,636.0	4,687.7	4,648.9	16.6	14.8	-135.34	471.9	-349.0	172.5	144.2	28.29	6.097	
4,800.0	4,734.3	4,787.5	4,747.8	17.0	15.1	-135.81	482.8	-357.4	178.4	149.5	28.88	6.175	
4,900.0	4,832.5	4,887.3	4,846.6	17.4	15.5	-136.25	493.8	-365.8	184.3	154.8	29.48	6.251	
5,000.0	4,930.7	4,987.1	4,945.5	17.9	15.8	-136.67	504.8	-374.2	190.2	160.1	30.08	6.323	

COMPASS 2003.21 Build 46

Company:	Synergy Resources	Local Co-ordinate Reference:	Well SRC Kelly Farms A-4-3CHZ
Project:	SEC.4-T5N-R66W	TVD Reference:	WELL @ 4767.0ft (Original Well Elev)
Reference Site:	SRC Kelly Farms Pad Sec.4-T5N-R66W	MD Reference:	WELL @ 4767.0ft (Original Well Elev)
Site Error:	0.0ft	North Reference:	True
Reference Well:	SRC Kelly Farms A-4-3CHZ	Survey Calculation Method:	Minimum Curvature
Well Error:	0.0ft	Output errors are at	2.00 sigma
Reference Wellbore	Wellbore #1	Database:	Landmark
Reference Design:	Plan #1 (5-20-13)	Offset TVD Reference:	Offset Datum

Offset Design												Offset Site Error:	0.0 ft
Survey Program: 0-MWD												Offset Well Error:	0.0 ft
Reference		Offset		Semi Major Axis			Distance						Warning
Measured Depth (ft)	Vertical Depth (ft)	Measured Depth (ft)	Vertical Depth (ft)	Reference (ft)	Offset (ft)	Highside Toolface (°)	Offset Wellbore Centre +N/-S (ft)	+E/-W (ft)	Between Centres (ft)	Between Ellipses (ft)	Minimum Separation (ft)	Separation Factor	
5,100.0	5,029.0	5,087.0	5,044.3	18.3	16.2	-137.05	515.8	-382.6	196.1	165.4	30.67	6.393	
5,200.0	5,127.2	5,185.2	5,141.7	18.7	16.5	-137.48	526.4	-390.8	202.2	170.9	31.24	6.472	
5,300.0	5,225.5	5,280.9	5,236.8	19.1	16.7	-138.46	534.6	-397.1	209.9	178.2	31.62	6.636	
5,400.0	5,323.7	5,376.0	5,331.6	19.5	16.9	-140.03	540.3	-401.4	219.6	187.7	31.87	6.890	
5,500.0	5,422.0	5,470.3	5,425.8	19.9	17.1	-142.06	543.5	-403.9	231.6	199.6	32.00	7.238	
5,600.0	5,520.2	5,564.7	5,520.2	20.3	17.2	-144.45	544.2	-404.5	246.0	213.9	32.03	7.679	
5,700.0	5,618.4	5,662.9	5,618.4	20.7	17.3	-146.81	544.2	-404.5	261.5	229.4	32.08	8.151	
5,800.0	5,716.7	5,761.2	5,716.7	21.2	17.5	-148.91	544.2	-404.5	277.3	245.2	32.18	8.620	
5,900.0	5,815.0	5,859.5	5,815.0	21.5	17.7	-150.82	544.2	-404.5	293.2	260.9	32.30	9.076	
6,000.0	5,913.8	5,958.3	5,913.8	21.8	17.8	-152.33	544.2	-404.5	306.6	274.1	32.43	9.452	
6,100.0	6,013.1	6,057.6	6,013.1	22.1	18.0	-153.41	544.2	-404.5	317.1	284.4	32.61	9.722	
6,200.0	6,112.8	6,157.3	6,112.8	22.3	18.1	-154.13	544.2	-404.5	324.5	291.7	32.82	9.887	
6,300.0	6,212.7	6,257.2	6,212.7	22.4	18.3	-154.53	544.2	-404.5	328.8	295.8	33.04	9.951	
6,400.0	6,312.7	6,357.2	6,312.7	22.6	18.5	-179.23	544.2	-404.5	330.0	291.7	38.29	8.619	
6,500.0	6,412.7	6,457.4	6,412.7	22.7	18.6	-179.89	544.2	-400.6	330.0	291.3	38.69	8.530	
6,506.2	6,418.9	6,463.5	6,418.9	22.7	18.6	89.99	544.2	-400.0	330.0	296.5	33.50	9.850	
6,600.0	6,512.7	6,554.9	6,508.8	22.8	18.6	87.22	544.2	-384.0	330.4	297.1	33.26	9.934	
6,700.0	6,612.3	6,648.6	6,598.1	22.9	18.6	83.38	544.2	-355.9	332.3	299.5	32.77	10.142	
6,800.0	6,709.9	6,739.8	6,680.8	22.9	18.6	79.75	544.2	-317.5	335.6	303.3	32.29	10.391	
6,900.0	6,803.6	6,828.8	6,756.2	22.9	18.5	76.39	544.2	-270.3	339.9	308.0	31.91	10.651	
7,000.0	6,891.6	6,916.0	6,823.7	22.8	18.4	73.35	544.2	-215.3	344.9	313.2	31.65	10.895	
7,100.0	6,972.1	7,000.0	6,882.1	22.7	18.3	70.71	544.2	-154.9	350.1	318.6	31.56	11.096	
7,200.0	7,043.6	7,085.8	6,933.9	22.6	18.2	68.38	544.3	-86.7	355.4	323.7	31.70	11.209	
7,300.0	7,104.7	7,168.9	6,976.1	22.5	18.2	66.47	544.3	-15.1	360.2	328.1	32.16	11.201	
7,400.0	7,154.2	7,250.0	7,008.9	22.4	18.4	64.98	544.3	59.0	364.4	331.4	32.99	11.047	
7,500.0	7,191.1	7,332.8	7,033.6	22.4	19.4	63.84	544.3	138.0	367.7	333.4	34.32	10.715	
7,600.0	7,214.8	7,413.9	7,048.8	22.4	20.6	63.11	544.3	217.7	370.0	333.8	36.13	10.241	
7,700.0	7,224.7	7,494.8	7,054.9	23.2	21.9	62.76	544.3	298.3	371.1	332.6	38.40	9.662	
7,800.0	7,225.0	7,591.6	7,055.0	24.8	23.7	62.74	544.3	395.1	371.1	329.6	41.50	8.943	
7,900.0	7,225.0	7,691.6	7,055.0	26.8	25.8	62.74	544.3	495.1	371.1	326.1	45.02	8.244	
8,000.0	7,225.0	7,791.6	7,055.0	28.8	27.9	62.73	544.3	595.1	371.1	322.3	48.80	7.604	
8,100.0	7,225.0	7,891.6	7,055.0	31.0	30.2	62.73	544.3	695.1	371.1	318.3	52.79	7.029	
8,200.0	7,225.0	7,991.6	7,055.0	33.3	32.5	62.73	544.3	795.1	371.1	314.1	56.95	6.516	
8,300.0	7,225.0	8,091.6	7,055.0	35.7	34.9	62.73	544.4	895.1	371.1	309.8	61.24	6.059	
8,400.0	7,225.0	8,191.6	7,055.0	38.1	37.4	62.73	544.4	995.1	371.1	305.4	65.64	5.653	
8,500.0	7,225.0	8,291.6	7,055.0	40.6	39.9	62.73	544.4	1,095.1	371.0	300.9	70.12	5.292	
8,600.0	7,225.0	8,391.6	7,055.0	43.1	42.4	62.73	544.4	1,195.1	371.0	296.4	74.67	4.969	
8,700.0	7,225.0	8,491.6	7,055.0	45.6	45.0	62.73	544.4	1,295.1	371.0	291.7	79.27	4.680	
8,800.0	7,225.0	8,591.6	7,055.0	48.2	47.6	62.73	544.4	1,395.1	371.0	287.1	83.93	4.420	
8,900.0	7,225.0	8,691.6	7,055.0	50.8	50.2	62.73	544.4	1,495.1	371.0	282.4	88.63	4.186	
9,000.0	7,225.0	8,791.6	7,055.0	53.4	52.9	62.73	544.4	1,595.1	371.0	277.6	93.36	3.974	
9,100.0	7,225.0	8,891.6	7,055.0	56.0	55.5	62.73	544.5	1,695.1	371.0	272.9	98.12	3.781	
9,200.0	7,225.0	8,991.6	7,055.0	58.7	58.2	62.73	544.5	1,795.1	371.0	268.1	102.91	3.605	
9,300.0	7,225.0	9,091.6	7,055.0	61.3	60.9	62.72	544.5	1,895.1	371.0	263.2	107.72	3.444	
9,400.0	7,225.0	9,191.6	7,055.0	64.0	63.6	62.72	544.5	1,995.1	371.0	258.4	112.55	3.296	
9,500.0	7,225.0	9,291.6	7,055.0	66.7	66.3	62.72	544.5	2,095.1	370.9	253.5	117.40	3.160	
9,600.0	7,225.0	9,391.6	7,055.0	69.4	69.0	62.72	544.5	2,195.1	370.9	248.7	122.26	3.034	
9,700.0	7,225.0	9,491.6	7,055.0	72.1	71.7	62.72	544.5	2,295.1	370.9	243.8	127.13	2.918	
9,800.0	7,225.0	9,591.6	7,055.0	74.8	74.4	62.72	544.5	2,395.1	370.9	238.9	132.02	2.810	
9,900.0	7,225.0	9,691.6	7,055.0	77.5	77.2	62.72	544.5	2,495.1	370.9	234.0	136.91	2.709	
10,000.0	7,225.0	9,791.6	7,055.0	80.2	79.9	62.72	544.6	2,595.1	370.9	229.1	141.82	2.615	
10,100.0	7,225.0	9,891.6	7,055.0	82.9	82.6	62.72	544.6	2,695.1	370.9	224.2	146.73	2.528	

CC - Min centre to center distance or convergent point, SF - min separation factor, ES - min ellipse separation

Survey Design SRC Kelly Farms Pad Sec.4-T5N-R66W - SRC Kelly Farms A-4-3NHZ - Wellbore #1 - Plan #1 (5-20-13)													Offset Site Error: 0.0 ft	
Survey Program: 0-MWD													Offset Well Error: 0.0 ft	
Reference		Offset		Semi Major Axis			Distance							
Measured Depth	Vertical Depth	Measured Depth	Vertical Depth	Reference	Offset	Highside Toolface	Offset Wellbore Centre		Between Centres	Between Ellipses	Minimum Separation	Separation Factor	Warning	
(ft)	(ft)	(ft)	(ft)	(ft)	(ft)	(°)	+N/-S (ft)	+E/-W (ft)	(ft)	(ft)	(ft)			
10,200.0	7,225.0	9,991.6	7,055.0	85.7	85.4	62.72	544.6	2,795.1	370.9	219.2	151.65	2.446		
10,300.0	7,225.0	10,091.6	7,055.0	88.4	88.1	62.72	544.6	2,895.1	370.9	214.3	156.58	2.368		
10,400.0	7,225.0	10,191.6	7,055.0	91.2	90.9	62.72	544.6	2,995.1	370.9	209.3	161.52	2.296		
10,500.0	7,225.0	10,291.6	7,055.0	93.9	93.6	62.72	544.6	3,095.1	370.8	204.4	166.46	2.228		
10,600.0	7,225.0	10,391.6	7,055.0	96.7	96.4	62.71	544.6	3,195.1	370.8	199.4	171.40	2.164		
10,700.0	7,225.0	10,491.6	7,055.0	99.4	99.2	62.71	544.6	3,295.1	370.8	194.5	176.35	2.103		
10,800.0	7,225.0	10,591.6	7,055.0	102.2	101.9	62.71	544.6	3,395.1	370.8	189.5	181.31	2.045		
10,900.0	7,225.0	10,691.6	7,055.0	104.9	104.7	62.71	544.7	3,495.1	370.8	184.5	186.26	1.991		
11,000.0	7,225.0	10,791.6	7,055.0	107.7	107.5	62.71	544.7	3,595.1	370.8	179.6	191.23	1.939		
11,100.0	7,225.0	10,891.6	7,055.0	110.4	110.2	62.71	544.7	3,695.1	370.8	174.6	196.19	1.890		
11,200.0	7,225.0	10,991.6	7,055.0	113.2	113.0	62.71	544.7	3,795.1	370.8	169.6	201.16	1.843		
11,300.0	7,225.0	11,091.6	7,055.0	116.0	115.8	62.71	544.7	3,895.1	370.8	164.6	206.13	1.799		
11,400.0	7,225.0	11,191.6	7,055.0	118.7	118.6	62.71	544.7	3,995.1	370.8	159.6	211.11	1.756		
11,500.0	7,225.0	11,291.6	7,055.0	121.5	121.3	62.71	544.7	4,095.1	370.7	154.7	216.08	1.716		
11,600.0	7,225.0	11,391.6	7,055.0	124.3	124.1	62.71	544.7	4,195.1	370.7	149.7	221.06	1.677		
11,700.0	7,225.0	11,491.6	7,055.0	127.1	126.9	62.71	544.7	4,295.1	370.7	144.7	226.04	1.640		
11,800.0	7,225.0	11,591.6	7,055.0	129.8	129.7	62.70	544.8	4,395.1	370.7	139.7	231.03	1.605		
11,900.0	7,225.0	11,691.6	7,055.0	132.6	132.4	62.70	544.8	4,495.1	370.7	134.7	236.01	1.571		
12,000.0	7,225.0	11,791.6	7,055.0	135.4	135.2	62.70	544.8	4,595.1	370.7	129.7	241.00	1.538		
12,100.0	7,225.0	11,891.6	7,055.0	138.2	138.0	62.70	544.8	4,695.1	370.7	124.7	245.99	1.507		
12,200.0	7,225.0	11,991.6	7,055.0	140.9	140.8	62.70	544.8	4,795.1	370.7	119.7	250.98	1.477	Level 3	
12,300.0	7,225.0	12,091.6	7,055.0	143.7	143.6	62.70	544.8	4,895.1	370.7	114.7	255.97	1.448	Level 3	
12,400.0	7,225.0	12,191.6	7,055.0	146.5	146.4	62.70	544.8	4,995.1	370.7	109.7	260.96	1.420	Level 3	
12,500.0	7,225.0	12,291.6	7,055.0	149.3	149.2	62.70	544.8	5,095.1	370.6	104.7	265.95	1.394	Level 3	
12,600.0	7,225.0	12,391.6	7,055.0	152.1	151.9	62.70	544.8	5,195.1	370.6	99.7	270.95	1.368	Level 3	
12,605.4	7,225.0	12,397.1	7,055.0	152.2	152.1	62.70	544.8	5,200.5	370.6	99.4	271.22	1.367	Level 3	
12,642.1	7,225.0	12,404.0	7,055.0	153.2	152.3	62.70	544.8	5,207.5	371.8	99.5	272.31	1.365	Level 3, SF	

Company:	Synergy Resources	Local Co-ordinate Reference:	Well SRC Kelly Farms A-4-3CHZ
Project:	SEC.4-T5N-R66W	TVD Reference:	WELL @ 4767.0ft (Original Well Elev)
Reference Site:	SRC Kelly Farms Pad Sec.4-T5N-R66W	MD Reference:	WELL @ 4767.0ft (Original Well Elev)
Site Error:	0.0ft	North Reference:	True
Reference Well:	SRC Kelly Farms A-4-3CHZ	Survey Calculation Method:	Minimum Curvature
Well Error:	0.0ft	Output errors are at	2.00 sigma
Reference Wellbore	Wellbore #1	Database:	Landmark
Reference Design:	Plan #1 (5-20-13)	Offset TVD Reference:	Offset Datum

Offset Design													Offset Site Error:	0.0 ft
Survey Program: 0-MWD													Offset Well Error:	0.0 ft
Reference		Offset		Semi Major Axis			Distance							Warning
Measured Depth (ft)	Vertical Depth (ft)	Measured Depth (ft)	Vertical Depth (ft)	Reference (ft)	Offset (ft)	Highside Toolface (°)	Offset Wellbore Centre +N/-S (ft)	+E/-W (ft)	Between Centres (ft)	Between Ellipses (ft)	Minimum Separation (ft)	Separation Factor		
0.0	0.0	0.0	0.0	0.0	0.0	78.46	8.0	39.3	40.1					
100.0	100.0	98.0	98.0	0.1	0.1	78.46	8.0	39.3	40.1	39.8	0.22	180.041		
200.0	200.0	198.0	198.0	0.3	0.3	78.46	8.0	39.3	40.1	39.4	0.67	59.813		
300.0	300.0	298.0	298.0	0.6	0.6	78.46	8.0	39.3	40.1	38.9	1.12	35.792		
400.0	400.0	398.0	398.0	0.8	0.8	78.46	8.0	39.3	40.1	38.5	1.57	25.536 CC, ES		
500.0	500.0	497.3	497.3	1.0	1.0	76.42	9.6	39.7	40.9	38.9	2.02	20.280		
600.0	600.0	596.4	596.2	1.2	1.2	70.65	14.5	41.2	43.7	41.2	2.46	17.723		
700.0	700.0	695.0	694.5	1.5	1.5	62.66	22.5	43.6	49.2	46.3	2.93	16.824		
800.0	800.0	793.1	791.8	1.7	1.7	80.36	33.8	47.0	57.9	54.5	3.39	17.068		
900.0	899.8	890.6	888.2	1.9	2.0	76.43	48.2	51.3	69.1	65.3	3.87	17.867		
1,000.0	999.5	987.6	983.5	2.1	2.3	74.55	65.5	56.5	82.4	78.1	4.37	18.876		
1,100.0	1,098.7	1,086.6	1,080.4	2.4	2.7	74.55	84.9	62.3	96.3	91.4	4.91	19.628		
1,200.0	1,197.5	1,185.7	1,177.4	2.7	3.1	76.28	104.2	68.1	109.3	103.8	5.49	19.896		
1,300.0	1,295.8	1,284.7	1,274.4	3.0	3.5	79.05	123.6	73.9	121.8	115.7	6.15	19.825		
1,400.0	1,394.0	1,383.8	1,371.3	3.3	3.9	81.47	143.0	79.7	134.6	127.7	6.84	19.689		
1,500.0	1,492.2	1,482.8	1,468.3	3.7	4.3	83.48	162.3	85.5	147.5	140.0	7.55	19.539		
1,600.0	1,590.5	1,581.8	1,565.2	4.1	4.8	85.16	181.7	91.3	160.6	152.3	8.28	19.389		
1,700.0	1,688.7	1,680.9	1,662.2	4.5	5.2	86.59	201.0	97.2	173.8	164.8	9.03	19.247		
1,800.0	1,787.0	1,779.9	1,759.1	4.8	5.6	87.81	220.4	103.0	187.1	177.3	9.79	19.115		
1,900.0	1,885.2	1,878.9	1,856.1	5.2	6.0	88.87	239.7	108.8	200.5	189.9	10.56	18.994		
2,000.0	1,983.5	1,978.0	1,953.0	5.6	6.4	89.80	259.1	114.6	213.9	202.6	11.33	18.884		
2,100.0	2,081.7	2,077.0	2,050.0	6.0	6.9	90.62	278.4	120.4	227.4	215.3	12.11	18.784		
2,200.0	2,179.9	2,176.1	2,146.9	6.4	7.3	91.35	297.8	126.2	240.9	228.0	12.89	18.693		
2,300.0	2,278.2	2,275.1	2,243.9	6.8	7.7	92.00	317.1	132.0	254.5	240.8	13.67	18.611		
2,400.0	2,376.4	2,374.1	2,340.9	7.2	8.1	92.59	336.5	137.8	268.1	253.6	14.46	18.536		
2,500.0	2,474.7	2,473.2	2,437.8	7.6	8.6	93.11	355.9	143.6	281.7	266.4	15.25	18.468		
2,600.0	2,572.9	2,572.2	2,534.8	8.0	9.0	93.59	375.2	149.4	295.3	279.3	16.05	18.405		
2,700.0	2,671.2	2,671.2	2,631.7	8.4	9.4	94.03	394.6	155.2	309.0	292.1	16.84	18.348		
2,800.0	2,769.4	2,770.3	2,728.7	8.8	9.9	94.43	413.9	161.0	322.6	305.0	17.63	18.296		
2,900.0	2,867.6	2,869.3	2,825.6	9.2	10.3	94.80	433.3	166.8	336.3	317.9	18.43	18.247		
3,000.0	2,965.9	2,968.4	2,922.6	9.6	10.7	95.14	452.6	172.6	350.0	330.8	19.23	18.202		
3,100.0	3,064.1	3,067.4	3,019.5	10.0	11.2	95.45	472.0	178.4	363.7	343.7	20.03	18.161		
3,200.0	3,162.4	3,166.4	3,116.5	10.5	11.6	95.74	491.3	184.3	377.4	356.6	20.83	18.123		
3,300.0	3,260.6	3,265.5	3,213.4	10.9	12.0	96.01	510.7	190.1	391.1	369.5	21.63	18.087		
3,400.0	3,358.9	3,364.5	3,310.4	11.3	12.5	96.26	530.1	195.9	404.9	382.5	22.43	18.053		
3,500.0	3,457.1	3,463.5	3,407.3	11.7	12.9	96.50	549.4	201.7	418.6	395.4	23.23	18.022		
3,600.0	3,555.3	3,562.6	3,504.3	12.1	13.3	96.72	568.8	207.5	432.4	408.3	24.03	17.993		
3,700.0	3,653.6	3,661.6	3,601.3	12.5	13.7	96.93	588.1	213.3	446.1	421.3	24.83	17.966		
3,800.0	3,751.8	3,760.7	3,698.2	12.9	14.2	97.12	607.5	219.1	459.9	434.2	25.63	17.940		
3,900.0	3,850.1	3,859.7	3,795.2	13.3	14.6	97.30	626.8	224.9	473.6	447.2	26.44	17.916		
4,000.0	3,948.3	3,958.7	3,892.1	13.7	15.0	97.48	646.2	230.7	487.4	460.2	27.24	17.893		
4,100.0	4,046.6	4,057.8	3,989.1	14.1	15.5	97.64	665.5	236.5	501.2	473.1	28.04	17.872		
4,200.0	4,144.8	4,156.8	4,086.0	14.6	15.9	97.80	684.9	242.3	514.9	486.1	28.85	17.851		
4,300.0	4,243.0	4,255.8	4,183.0	15.0	16.3	97.94	704.2	248.1	528.7	499.1	29.65	17.832		
4,400.0	4,341.3	4,354.9	4,279.9	15.4	16.8	98.08	723.6	253.9	542.5	512.0	30.45	17.814		
4,500.0	4,439.5	4,453.9	4,376.9	15.8	17.2	98.21	743.0	259.7	556.3	525.0	31.26	17.796		
4,600.0	4,537.8	4,553.0	4,473.8	16.2	17.6	98.34	762.3	265.5	570.1	538.0	32.06	17.780		
4,700.0	4,636.0	4,652.0	4,570.8	16.6	18.1	98.46	781.7	271.3	583.8	551.0	32.87	17.764		
4,800.0	4,734.3	4,751.0	4,667.8	17.0	18.5	98.57	801.0	277.2	597.6	564.0	33.67	17.749		
4,900.0	4,832.5	4,850.1	4,764.7	17.4	18.9	98.68	820.4	283.0	611.4	577.0	34.48	17.735		
5,000.0	4,930.7	4,949.1	4,861.7	17.9	19.4	98.79	839.7	288.8	625.2	589.9	35.28	17.721		
5,100.0	5,029.0	5,048.1	4,958.6	18.3	19.8	98.89	859.1	294.6	639.0	602.9	36.09	17.708		

CC - Min centre to center distance or convergent point, SF - min separation factor, ES - min ellipse separation

Offset Design													Offset Site Error: 0.0 ft	
Survey Program: 0-MWD													Offset Well Error: 0.0 ft	
Reference		Offset		Semi Major Axis			Distance							
Measured Depth	Vertical Depth	Measured Depth	Vertical Depth	Reference	Offset	Highside Toolface	Offset Wellbore Centre		Between Centres	Between Ellipses	Minimum Separation	Separation Factor	Warning	
(ft)	(ft)	(ft)	(ft)	(ft)	(ft)	(°)	+N/-S (ft)	+E/-W (ft)	(ft)	(ft)	(ft)			
5,200.0	5,127.2	5,147.2	5,055.6	18.7	20.2	98.98	878.4	300.4	652.8	615.9	36.89	17.696		
5,300.0	5,225.5	5,246.2	5,152.5	19.1	20.7	99.07	897.8	306.2	666.6	628.9	37.70	17.684		
5,400.0	5,323.7	5,345.3	5,249.5	19.5	21.1	99.16	917.2	312.0	680.4	641.9	38.50	17.672		
5,500.0	5,422.0	5,444.3	5,346.4	19.9	21.5	99.25	936.5	317.8	694.2	654.9	39.31	17.661		
5,600.0	5,520.2	5,547.5	5,447.5	20.3	22.0	99.34	956.5	323.8	707.9	667.8	40.11	17.648		
5,700.0	5,618.4	5,661.3	5,559.6	20.7	22.3	99.68	975.4	329.5	720.2	679.3	40.89	17.612		
5,800.0	5,716.7	5,775.3	5,672.5	21.2	22.6	100.30	990.0	333.9	730.4	688.8	41.62	17.547		
5,900.0	5,815.0	5,889.0	5,785.7	21.5	22.9	101.25	1,000.3	336.9	738.6	696.3	42.31	17.456		
6,000.0	5,913.8	6,002.7	5,899.2	21.8	23.1	102.26	1,006.3	338.7	744.5	701.6	42.87	17.367		
6,100.0	6,013.1	6,114.6	6,011.1	22.1	23.2	103.19	1,008.0	339.3	747.8	704.5	43.33	17.261		
6,200.0	6,112.8	6,214.3	6,110.8	22.3	23.3	103.84	1,008.0	339.3	749.8	706.1	43.70	17.158		
6,300.0	6,212.7	6,314.2	6,210.7	22.4	23.5	104.22	1,008.0	339.3	750.9	706.9	44.02	17.058		
6,400.0	6,312.7	6,414.1	6,310.7	22.6	23.6	79.74	1,008.0	339.3	751.3	717.8	33.50	22.425		
6,500.0	6,412.7	6,514.1	6,410.7	22.7	23.7	79.74	1,008.0	339.3	751.3	717.4	33.87	22.184		
6,600.0	6,512.7	7,725.3	7,196.0	22.8	26.2	-88.96	1,037.9	-393.3	704.6	663.8	40.86	17.246		
6,700.0	6,612.3	7,717.8	7,196.0	22.9	26.1	-115.53	1,037.6	-385.8	608.1	571.1	36.99	16.440		
6,800.0	6,709.9	7,671.3	7,195.0	22.9	25.6	-123.34	1,035.7	-339.4	514.2	478.1	36.05	14.264		
6,900.0	6,803.6	7,605.6	7,188.7	22.9	25.0	-122.83	1,030.0	-274.1	423.0	387.9	35.07	12.060		
7,000.0	6,891.6	7,547.1	7,177.9	22.8	24.6	-120.69	1,030.7	-216.7	336.0	301.8	34.17	9.832		
7,100.0	6,972.1	7,491.8	7,163.5	22.7	24.4	-115.70	1,028.5	-163.3	256.2	222.5	33.74	7.595		
7,200.0	7,043.6	7,438.0	7,145.6	22.6	24.2	-106.84	1,026.4	-112.7	190.4	156.0	34.39	5.536		
7,300.0	7,104.7	7,385.3	7,124.4	22.5	24.1	-93.36	1,024.5	-64.5	152.7	116.5	36.21	4.219		
7,335.4	7,123.6	7,366.8	7,116.1	22.5	24.1	-87.56	1,023.8	-47.9	149.7	112.8	36.90	4.058 SF		
7,400.0	7,154.2	7,333.1	7,100.0	22.4	24.1	-76.15	1,022.6	-18.4	159.2	121.7	37.51	4.243		
7,500.0	7,191.1	7,281.4	7,072.5	22.4	24.0	-58.78	1,020.8	25.4	201.1	164.8	36.32	5.538		
7,600.0	7,214.8	7,230.0	7,042.1	22.4	24.0	-44.68	1,019.1	66.8	258.3	225.1	33.21	7.777		
7,700.0	7,224.7	7,178.7	7,009.0	23.2	24.0	-34.57	1,017.5	105.9	319.4	289.1	30.29	10.543		
7,800.0	7,225.0	7,129.7	6,974.7	24.8	24.0	-29.75	1,016.1	140.9	382.6	353.4	29.24	13.083		
7,900.0	7,225.0	7,086.6	6,942.7	26.8	24.0	-26.66	1,014.9	169.7	451.9	423.1	28.78	15.705		
8,000.0	7,225.0	7,050.0	6,914.2	28.8	24.0	-24.36	1,014.0	192.6	526.2	497.6	28.60	18.396		
8,100.0	7,225.0	7,015.8	6,886.5	31.0	24.0	-22.44	1,013.2	212.7	604.3	575.8	28.57	21.153		
8,200.0	7,225.0	6,986.6	6,862.2	33.3	24.0	-20.98	1,012.5	228.7	685.6	656.9	28.72	23.872		
8,300.0	7,225.0	6,950.0	6,830.7	35.7	24.0	-19.32	1,011.8	247.5	769.5	740.8	28.71	26.802		
8,400.0	7,225.0	6,950.0	6,830.7	38.1	24.0	-19.32	1,011.8	247.5	855.4	825.7	29.66	28.836		
8,500.0	7,225.0	6,917.2	6,801.8	40.6	24.0	-18.01	1,011.1	262.9	942.7	912.9	29.78	31.654		

SRC Kelly Farms Pad Sec.4-T5N-R66W - SRC Northridge C-4-5CHZ - Wellbore #1 - Plan #1 (5-21-13)													Offset Site Error:	0.0 ft
Survey Program: 0-MWD													Offset Well Error:	0.0 ft
Reference		Offset		Semi Major Axis			Distance							Warning
Measured Depth (ft)	Vertical Depth (ft)	Measured Depth (ft)	Vertical Depth (ft)	Reference (ft)	Offset (ft)	Highside Toolface (°)	Offset Wellbore Centre +N/-S (ft)	Offset Wellbore Centre +E/-W (ft)	Between Centres (ft)	Between Ellipses (ft)	Minimum Separation (ft)	Separation Factor		
0.0	0.0	0.0	0.0	0.0	0.0	107.58	-13.8	43.7	45.9					
100.0	100.0	98.0	98.0	0.1	0.1	107.58	-13.8	43.7	45.8	45.6	0.22	206.036		
200.0	200.0	198.0	198.0	0.3	0.3	107.58	-13.8	43.7	45.8	45.2	0.67	68.449		
300.0	300.0	298.0	298.0	0.6	0.6	107.58	-13.8	43.7	45.8	44.7	1.12	40.960		
400.0	400.0	398.0	398.0	0.8	0.8	107.58	-13.8	43.7	45.8	44.3	1.57	29.223		
500.0	500.0	498.0	498.0	1.0	1.0	107.58	-13.8	43.7	45.8	43.8	2.02	22.715		
600.0	600.0	598.0	598.0	1.2	1.2	107.58	-13.8	43.7	45.8	43.4	2.47	18.577 CC		
700.0	700.0	697.8	697.8	1.5	1.5	105.51	-12.3	44.4	46.1	43.1	2.92	15.797 ES		
800.0	800.0	797.4	797.3	1.7	1.7	125.59	-7.6	46.4	48.1	44.7	3.36	14.295		
900.0	899.8	896.7	896.2	1.9	1.9	121.05	0.2	49.9	53.2	49.3	3.82	13.922		
1,000.0	999.5	995.7	994.4	2.1	2.2	117.13	11.1	54.7	61.4	57.1	4.30	14.270		
1,100.0	1,098.7	1,094.1	1,091.7	2.4	2.4	114.09	25.1	60.8	72.6	67.8	4.82	15.054		
1,200.0	1,197.5	1,191.9	1,187.7	2.7	2.8	111.87	41.9	68.2	86.7	81.3	5.40	16.061		
1,300.0	1,295.8	1,289.1	1,282.4	3.0	3.1	110.16	61.7	76.9	103.4	97.4	6.04	17.114		
1,400.0	1,394.0	1,385.4	1,375.6	3.3	3.5	107.75	84.1	86.7	121.9	115.1	6.74	18.077		
1,500.0	1,492.2	1,482.9	1,469.3	3.7	4.0	105.18	108.8	97.6	141.6	134.2	7.48	18.935		
1,600.0	1,590.5	1,580.7	1,563.3	4.1	4.5	103.21	133.5	108.4	161.7	153.4	8.24	19.620		
1,700.0	1,688.7	1,678.6	1,657.4	4.5	5.0	101.68	158.3	119.3	181.8	172.8	9.01	20.173		
1,800.0	1,787.0	1,776.4	1,751.4	4.8	5.5	100.46	183.1	130.2	202.1	192.3	9.80	20.628		
1,900.0	1,885.2	1,874.3	1,845.4	5.2	6.0	99.46	207.9	141.1	222.4	211.8	10.59	21.006		
2,000.0	1,983.5	1,972.1	1,939.4	5.6	6.5	98.63	232.6	152.0	242.8	231.4	11.39	21.325		
2,100.0	2,081.7	2,070.0	2,033.5	6.0	7.1	97.92	257.4	162.9	263.2	251.0	12.19	21.596		
2,200.0	2,179.9	2,167.8	2,127.5	6.4	7.6	97.32	282.2	173.7	283.7	270.7	12.99	21.830		
2,300.0	2,278.2	2,265.6	2,221.5	6.8	8.1	96.80	307.0	184.6	304.2	290.4	13.80	22.033		
2,400.0	2,376.4	2,363.5	2,315.5	7.2	8.7	96.34	331.8	195.5	324.7	310.0	14.62	22.211		
2,500.0	2,474.7	2,461.3	2,409.6	7.6	9.2	95.94	356.5	206.4	345.2	329.8	15.43	22.368		
2,600.0	2,572.9	2,559.2	2,503.6	8.0	9.7	95.58	381.3	217.3	365.7	349.5	16.25	22.508		
2,700.0	2,671.2	2,657.0	2,597.6	8.4	10.3	95.26	406.1	228.2	386.3	369.2	17.07	22.633		
2,800.0	2,769.4	2,754.9	2,691.7	8.8	10.8	94.98	430.9	239.0	406.8	388.9	17.89	22.745		
2,900.0	2,867.6	2,852.7	2,785.7	9.2	11.4	94.72	455.6	249.9	427.4	408.7	18.71	22.846		
3,000.0	2,965.9	2,950.6	2,879.7	9.6	11.9	94.48	480.4	260.8	448.0	428.5	19.53	22.938		
3,100.0	3,064.1	3,048.4	2,973.7	10.0	12.4	94.27	505.2	271.7	468.6	448.2	20.35	23.021		
3,200.0	3,162.4	3,146.2	3,067.8	10.5	13.0	94.07	530.0	282.6	489.2	468.0	21.18	23.098		
3,300.0	3,260.6	3,244.1	3,161.8	10.9	13.5	93.89	554.8	293.5	509.7	487.7	22.00	23.168		
3,400.0	3,358.9	3,349.2	3,263.0	11.3	14.0	93.76	580.9	304.9	530.0	507.2	22.81	23.236		
3,500.0	3,457.1	3,462.2	3,372.7	11.7	14.5	93.93	605.5	315.8	547.9	524.3	23.60	23.218		
3,600.0	3,555.3	3,576.1	3,484.3	12.1	14.9	94.42	626.3	324.9	563.2	538.8	24.39	23.094		
3,700.0	3,653.6	3,690.4	3,597.2	12.5	15.2	95.22	643.1	332.3	575.8	550.6	25.16	22.881		
3,800.0	3,751.8	3,804.9	3,710.8	12.9	15.5	96.32	655.8	337.8	585.9	560.0	25.93	22.598		
3,900.0	3,850.1	3,919.2	3,824.7	13.3	15.8	97.71	664.2	341.5	593.6	566.9	26.66	22.261		
4,000.0	3,948.3	4,032.9	3,938.3	13.7	15.9	99.38	668.5	343.4	599.1	571.7	27.37	21.885		
4,100.0	4,046.6	4,139.2	4,044.6	14.1	16.1	101.19	669.2	343.7	602.8	574.8	28.04	21.499		
4,200.0	4,144.8	4,237.4	4,142.8	14.6	16.2	102.89	669.2	343.7	606.8	578.1	28.67	21.163		
4,300.0	4,243.0	4,335.7	4,241.0	15.0	16.3	104.57	669.2	343.7	611.3	582.0	29.29	20.871		
4,400.0	4,341.3	4,433.9	4,339.3	15.4	16.4	106.22	669.2	343.7	616.3	586.4	29.89	20.620		
4,500.0	4,439.5	4,532.2	4,437.5	15.8	16.5	107.85	669.2	343.7	621.9	591.4	30.48	20.406		
4,600.0	4,537.8	4,630.4	4,535.8	16.2	16.6	109.44	669.2	343.7	628.0	596.9	31.05	20.226		
4,700.0	4,636.0	4,728.6	4,634.0	16.6	16.8	111.01	669.2	343.7	634.5	602.9	31.60	20.079		
4,800.0	4,734.3	4,826.9	4,732.3	17.0	16.9	112.54	669.2	343.7	641.5	609.4	32.14	19.960		
4,900.0	4,832.5	4,925.1	4,830.5	17.4	17.0	114.04	669.2	343.7	649.0	616.4	32.67	19.868		
5,000.0	4,930.7	5,023.4	4,928.7	17.9	17.2	115.51	669.2	343.7	657.0	623.8	33.18	19.801		
5,100.0	5,029.0	5,121.6	5,027.0	18.3	17.3	116.94	669.2	343.7	665.3	631.7	33.68	19.757		

COMPASS 2003.21 Build 46

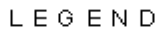
Company:	Synergy Resources	Local Co-ordinate Reference:	Well SRC Kelly Farms A-4-3CHZ
Project:	SEC.4-T5N-R66W	TVD Reference:	WELL @ 4767.0ft (Original Well Elev)
Reference Site:	SRC Kelly Farms Pad Sec.4-T5N-R66W	MD Reference:	WELL @ 4767.0ft (Original Well Elev)
Site Error:	0.0ft	North Reference:	True
Reference Well:	SRC Kelly Farms A-4-3CHZ	Survey Calculation Method:	Minimum Curvature
Well Error:	0.0ft	Output errors are at	2.00 sigma
Reference Wellbore	Wellbore #1	Database:	Landmark
Reference Design:	Plan #1 (5-20-13)	Offset TVD Reference:	Offset Datum







Offset Design		SRC Kelly Farms Pad Sec.4-T5N-R66W - SRC Northridge C-4-5CHZ - Wellbore #1 - Plan #1 (5-21-13)										Offset Site Error:		0.0 ft
Survey Program: 0-MWD												Offset Well Error:		0.0 ft
Reference		Offset		Semi Major Axis			Distance							Warning
Measured Depth	Vertical Depth	Measured Depth	Vertical Depth	Reference	Offset	Highside Toolface	Offset Wellbore Centre +N/-S	Offset Wellbore Centre +E/-W	Between Centres	Between Ellipses	Minimum Separation	Separation Factor		
(ft)	(ft)	(ft)	(ft)	(ft)	(ft)	(°)	(ft)	(ft)	(ft)	(ft)	(ft)			
5,200.0	5,127.2	5,219.9	5,125.2	18.7	17.4	118.33	669.2	343.7	674.1	640.0	34.16	19.733		
5,300.0	5,225.5	5,318.1	5,223.5	19.1	17.6	119.69	669.2	343.7	683.3	648.7	34.64	19.728		
5,400.0	5,323.7	5,416.3	5,321.7	19.5	17.7	121.02	669.2	343.7	692.8	657.7	35.10	19.740		
5,500.0	5,422.0	5,514.6	5,420.0	19.9	17.8	122.30	669.2	343.7	702.8	667.2	35.55	19.768		
5,600.0	5,520.2	5,612.8	5,518.2	20.3	18.0	123.56	669.2	343.7	713.0	677.0	35.99	19.810		
5,700.0	5,618.4	5,711.1	5,616.4	20.7	18.1	124.77	669.2	343.7	723.6	687.2	36.43	19.866		
5,800.0	5,716.7	5,809.3	5,714.7	21.2	18.3	125.95	669.2	343.7	734.6	697.7	36.85	19.933		
5,900.0	5,815.0	5,907.6	5,813.0	21.5	18.4	127.16	669.2	343.7	745.5	708.3	37.27	20.004		
6,000.0	5,913.8	6,006.5	5,911.8	21.8	18.5	128.22	669.2	343.7	754.9	717.3	37.63	20.062		
6,100.0	6,013.1	6,105.8	6,011.1	22.1	18.7	129.03	669.2	343.7	762.3	724.3	37.97	20.078		
6,200.0	6,112.8	6,205.4	6,110.8	22.3	18.8	129.59	669.2	343.7	767.5	729.3	38.28	20.051		
6,300.0	6,212.7	6,305.3	6,210.7	22.4	19.0	129.91	669.2	343.7	770.6	732.0	38.57	19.979		
6,400.0	6,312.7	7,571.9	7,033.0	22.6	23.7	-177.59	700.8	-407.3	742.9	702.2	40.71	18.250		
6,500.0	6,412.7	7,571.9	7,033.0	22.7	23.7	-177.59	700.8	-407.3	646.1	605.2	40.85	15.817		
6,600.0	6,512.7	7,571.9	7,033.0	22.8	23.7	93.34	700.8	-407.3	550.4	509.7	40.74	13.512		
6,700.0	6,612.3	7,564.4	7,033.0	22.9	23.6	111.47	700.5	-399.8	457.1	413.5	43.57	10.490		
6,800.0	6,709.9	7,543.1	7,033.0	22.9	23.2	119.39	699.6	-378.5	369.1	325.2	43.90	8.406		
6,900.0	6,803.6	7,495.2	7,031.8	22.9	22.3	116.86	697.6	-330.7	290.2	247.8	42.41	6.842		
7,000.0	6,891.6	7,442.8	7,026.9	22.8	21.5	109.83	695.4	-278.6	225.7	185.3	40.41	5.585		
7,100.0	6,972.1	7,391.1	7,018.3	22.7	20.7	99.23	693.2	-227.7	187.3	149.0	38.26	4.895 SF		
7,149.5	7,008.7	7,365.7	7,012.7	22.7	20.4	92.72	692.2	-202.9	182.2	145.0	37.19	4.899		
7,200.0	7,043.6	7,339.8	7,006.2	22.6	20.1	85.41	691.1	-177.9	187.3	151.3	36.01	5.202		
7,300.0	7,104.7	7,288.8	6,990.6	22.5	19.7	70.23	689.1	-129.3	221.7	188.3	33.40	6.637		
7,400.0	7,154.2	7,237.9	6,971.7	22.4	19.5	56.34	687.1	-82.2	274.4	244.1	30.28	9.064		
7,500.0	7,191.1	7,187.2	6,949.5	22.4	19.4	45.27	685.2	-36.6	333.8	306.8	26.95	12.385		
7,600.0	7,214.8	7,136.6	6,924.2	22.4	19.4	37.06	683.3	7.2	393.9	370.0	23.91	16.479		
7,700.0	7,224.7	7,086.0	6,896.0	23.2	19.4	31.10	681.6	49.1	452.1	430.3	21.78	20.758		
7,800.0	7,225.0	7,037.1	6,865.9	24.8	19.3	28.54	679.9	87.6	509.7	488.2	21.56	23.644		
7,900.0	7,225.0	7,000.0	6,841.3	26.8	19.3	27.11	678.8	115.4	572.7	550.8	21.92	26.132		
8,000.0	7,225.0	6,950.0	6,806.0	28.8	19.3	25.28	677.3	150.7	640.4	618.2	22.14	28.922		
8,100.0	7,225.0	6,918.5	6,782.5	31.0	19.4	24.18	676.4	171.7	712.0	689.3	22.69	31.387		
8,200.0	7,225.0	6,886.8	6,758.1	33.3	19.4	23.13	675.6	191.8	787.1	763.9	23.25	33.860		
8,300.0	7,225.0	6,850.0	6,728.5	35.7	19.4	21.98	674.6	213.7	865.2	841.5	23.74	36.439		
8,400.0	7,225.0	6,832.8	6,714.3	38.1	19.4	21.46	674.2	223.4	945.6	921.1	24.53	38.548		

Reference Depths are relative to WELL @ 4767.0ft (Original Well Elev)Coordinates are relative to: SRC Kelly Farms A-4-3CHZ
Offset Depths are relative to Offset DatumCoordinate System is US State Plane 1983, Colorado Northern Zone
Central Meridian is -105.500000 °Grid Convergence at Surface is: 0.46°



Reference Depths are relative to WELL @ 4767.0ft (Original Well Elev) Coordinates are relative to: SRC Kelly Farms A-4-3CHZ
Offset Depths are relative to Offset Datum Coordinate System is US State Plane 1983, Colorado Northern Zone
Central Meridian is -105.500000 ° Grid Convergence at Surface is: 0.46°



.), Wellbore #1, Wellbore #1 VD		SRC Kelly Farms 22-4-3CHZ, Wellbore #1, Plan #1 (5-20-13) VD		SRC Kelly Farms 21-4-3NHZ, Wellbore #1, Plan #1 (5-20-13) VD
), Wellbore #1, Wellbore #1 VD		SRC Kelly Farms 21-4-3NHZ #2, Wellbore #1, Plan #1 (5-20-13) VD		SRC Northridge 31-4-5NHZ, Wellbore #1, Plan #1 (5-20-13) VD
.), Wellbore #1, Wellbore #1 VD		SRC Kelly Farms A-4-3NHZ, Wellbore #1, Plan #1 (5-20-13) VD		SRC Northridge C-4-5CHZ, Wellbore #1, Plan #1 (5-20-13) VD