

T4N, R92W, 6th P.M.

SWEPI LP

1980 Brass Cap  
0.5 High  
Lat: 40.282681°  
Long: 107.671622°

1980 Brass Cap  
0.5 High  
Lat: 40.282661°  
Long: 107.662222°

1980 Alum. Cap  
0.6 High  
Lat: 40.282661°  
Long: 107.657475°

1980 Brass Cap,  
1.0' High  
Lat: 40.282664°  
Long: 107.651711°

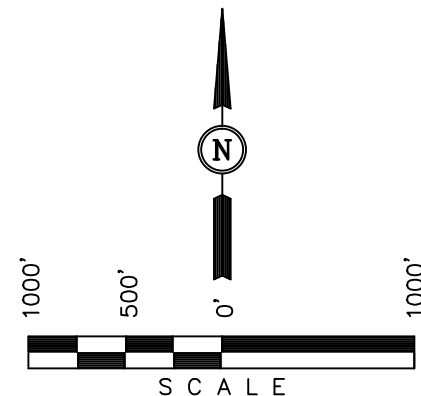
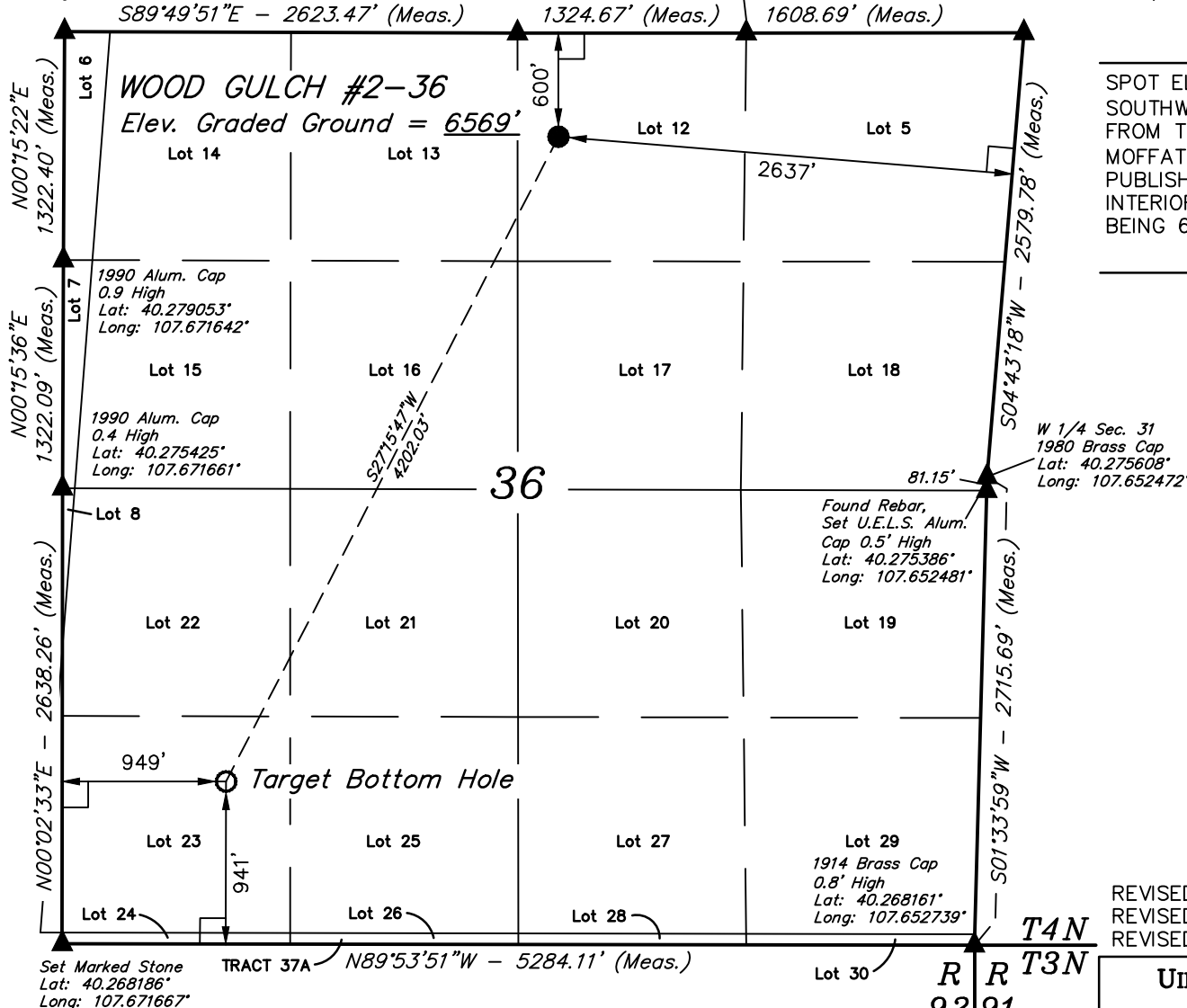
Well location, WOOD GULCH #2-36, located as shown in Lot 12 of Section 36, T4N, R92W, 6th P.M., Moffat County, Colorado.

### BASIS OF ELEVATION

SPOT ELEVATION AT A ROAD INTERSECTION LOCATED IN THE SOUTHWEST 1/4 OF SECTION 31, T5N, R91W, 6th P.M. TAKEN FROM THE MONUMENT BUTTE QUADRANGLE, COLORADO, MOFFAT COUNTY, 7.5 MINUTE QUAD (TOPOGRAPHIC MAP) PUBLISHED BY THE UNITED STATES DEPARTMENT OF THE INTERIOR, GEOLOGICAL SURVEY. SAID ELEVATION IS MARKED AS BEING 6530 FEET.

### BASIS OF BEARINGS

BASIS OF BEARINGS IS A G.P.S. OBSERVATION.



### CERTIFICATE

THIS IS TO CERTIFY THAT THE ABOVE PLAT WAS PREPARED FROM FIELD NOTES OF ACTUAL SURVEYS MADE BY ME OR UNDER MY SUPERVISION AND THAT THE SAME ARE TRUE AND CORRECT TO THE BEST OF MY KNOWLEDGE AND BELIEF.

REGISTERED LAND SURVEYOR  
REGISTRATION NO. 17492  
STATE OF COLORADO

REVISED: 05-08-13  
REVISED: 05-07-13  
REVISED: 05-06-13

UINTAH ENGINEERING & LAND SURVEYING  
85 SOUTH 200 EAST - VERNAL, UTAH 84078  
(435) 789-1017

### LEGEND:

- └─┘ = 90° SYMBOL
- = PROPOSED WELL HEAD.
- ▲ = SECTION CORNERS LOCATED.

SCALE 1" = 1000'	DATE SURVEYED: 10-12-12	DATE DRAWN: 04-18-13
PARTY G.M. A.S. M.D.	REFERENCES G.L.O. PLAT	
WEATHER COLD	FILE SWEPI LP	