



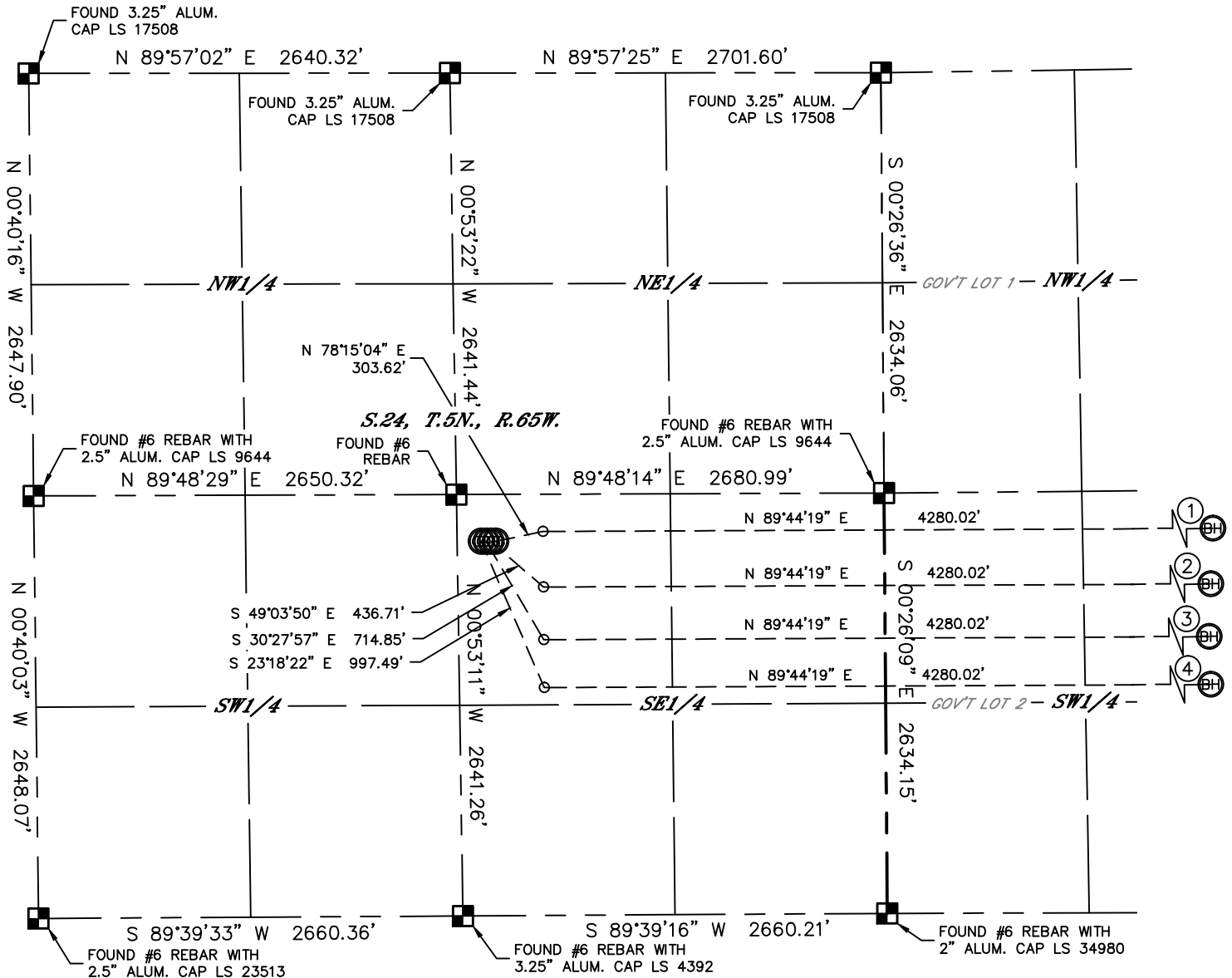
Lat40°, Inc. 1635 Foxtrail Drive, Suite 325 Loveland, CO 970-776-3321

MULTI-WELL PLAN

MAXEY 240-HZ PAD

THIS MAP DOES NOT REPRESENT A BOUNDARY SURVEY

SECTION: 24
TOWNSHIP: 5N
RANGE: 65W

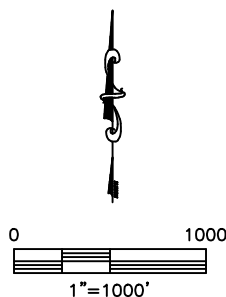


①
-BOTTOM HOLE-
MAXEY 240-402
2406' FSL
2140' FWL
LAT: 40.38395°N
LONG: 104.59423°W

②
-BOTTOM HOLE-
MAXEY 240-232
2058' FSL
2140' FWL
LAT: 40.38300°N
LONG: 104.59423°W

③
-BOTTOM HOLE-
MAXEY 24P-312
1728' FSL
2140' FWL
LAT: 40.38209°N
LONG: 104.59423°W

④
-BOTTOM HOLE-
MAXEY 24P-402
1428' FSL
2140' FWL
LAT: 40.38127°N
LONG: 104.59424°W





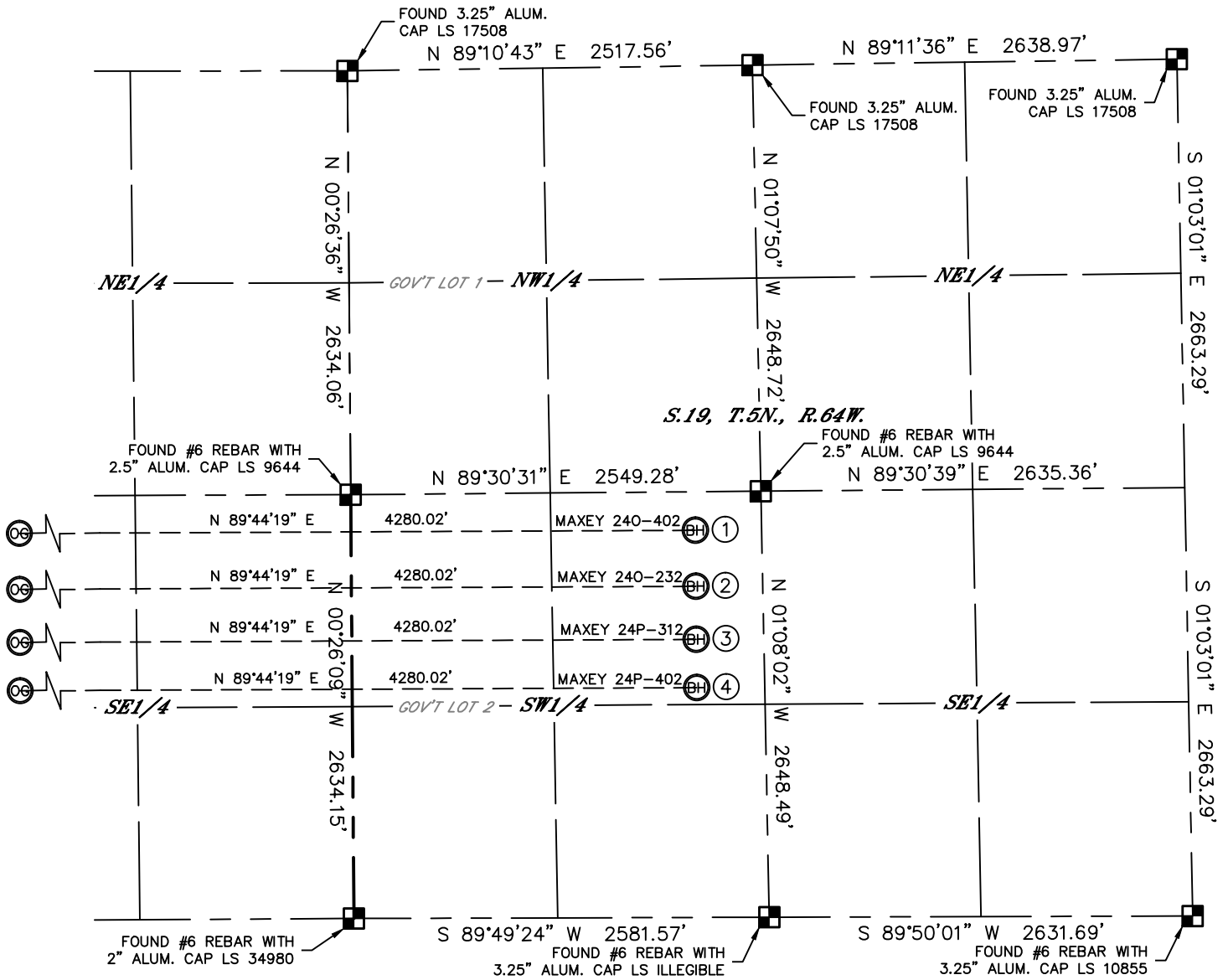
Lat40°, Inc. 1635 Foxtrail Drive, Suite 325 Loveland, CO 970-776-3321

MULTI-WELL PLAN

MAXEY 240-HZ PAD

THIS MAP DOES NOT REPRESENT A BOUNDARY SURVEY

SECTION: 24
TOWNSHIP: 5N
RANGE: 65W

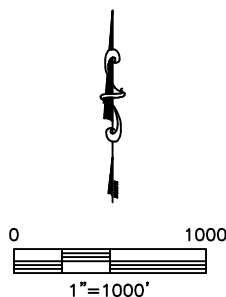


①
-BOTTOM HOLE-
MAXEY 240-402
2406' FSL
2140' FWL
LAT: 40.38395°N
LONG: 104.59423°W

②
-BOTTOM HOLE-
MAXEY 240-232
2058' FSL
2140' FWL
LAT: 40.38300°N
LONG: 104.59423°W

③
-BOTTOM HOLE-
MAXEY 24P-312
1728' FSL
2140' FWL
LAT: 40.38209°N
LONG: 104.59423°W

④
-BOTTOM HOLE-
MAXEY 24P-402
1428' FSL
2140' FWL
LAT: 40.38127°N
LONG: 104.59424°W





Lat40°, Inc. 1635 Foxtrail Drive, Suite 325 Loveland, CO 970-776-3321

MULTI-WELL PLAN

MAXEY 240-HZ PAD

SECTION: 24
TOWNSHIP: 5N
RANGE: 65W



DATE: rev 2/5/2013
PROJECT#: 2013003