

GREAT WESTERN OIL & GAS COMPANY

TAILHOLT FD #11-25HN, #11-25HC, #11-36HN,
 #11-24HN, #11-24HC & #11-35HN
 LOCATED IN WELD COUNTY, COLORADO
 SECTION 11, T6N, R67W, 6th P.M.

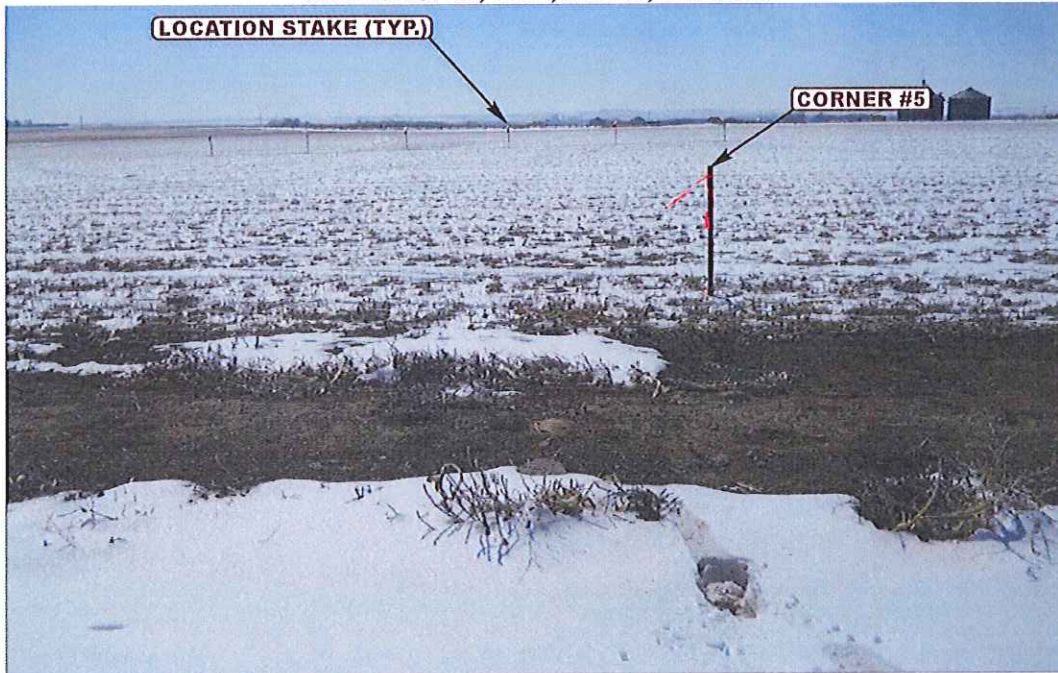


PHOTO: VIEW FROM CORNER #5 TO LOCATION STAKES

CAMERA ANGLE: NORTHERLY



PHOTO: VIEW FROM BEGINNING OF PROPOSED ACCESS

CAMERA ANGLE: SOUTHERLY



U E L S Uintah Engineering & Land Surveying
 85 South 200 East Vernal, Utah 84078
 (435) 789-1017 * FAX (435) 789-1813

LOCATION PHOTOS

08 **01** **12**
 MONTH DAY YEAR

PHOTO
P1

TAKEN BY: D.N. DRAWN BY: A.T. REV: 05-24-13 J.L.H.

GREAT WESTERN OIL & GAS COMPANY

TAILHOLT FD #11-25HN, #11-25HC, #11-36HN,
#11-24HN, #11-24HC & #11-35HN

LOCATED IN WELD COUNTY, COLORADO

SECTION 11, T6N, R67W, 6th P.M.

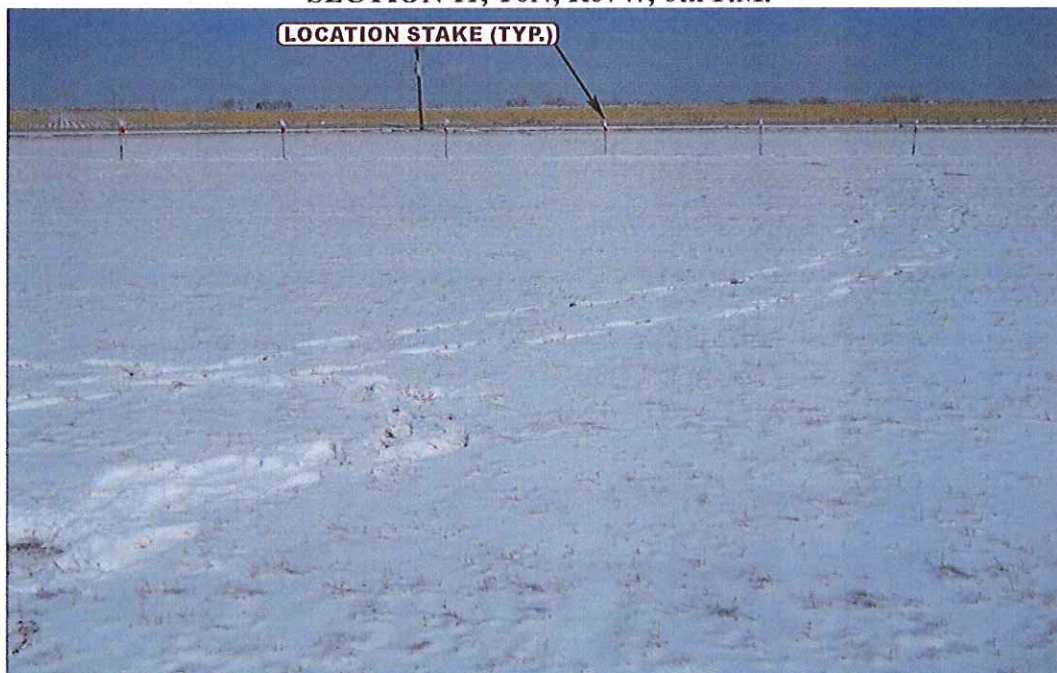


PHOTO: VIEW OF LOCATION STAKES

CAMERA ANGLE: NORTHERLY



PHOTO: VIEW OF LOCATION STAKE

CAMERA ANGLE: EASTERLY



- Since 1964 -

U
E
L
S

Uintah Engineering & Land Surveying

85 South 200 East Vernal, Utah 84078
(435) 789-1017 * FAX (435) 789-1813

LOCATION PHOTOS

08 01 12
MONTH DAY YEAR

PHOTO

P2

TAKEN BY: D.N.

DRAWN BY: A.T.

REV: 05-24-13 J.L.H.

GREAT WESTERN OIL & GAS COMPANY

TAILHOLT FD #11-25HN, #11-25HC, #11-36HN,
#11-24HN, #11-24HC & #11-35HN

LOCATED IN WELD COUNTY, COLORADO

SECTION 11, T6N, R67W, 6th P.M.



PHOTO: VIEW OF LOCATION STAKES

CAMERA ANGLE: SOUTHERLY



PHOTO: VIEW OF LOCATION STAKE

CAMERA ANGLE: WESTERLY



UELS

Uintah Engineering & Land Surveying

85 South 200 East Vernal, Utah 84078
(435) 789-1017 * FAX (435) 789-1813

LOCATION PHOTOS

08 01 12
MONTH DAY YEAR

PHOTO

P3

TAKEN BY: D.N.

DRAWN BY: A.T.

REV: 05-24-13 J.L.H.