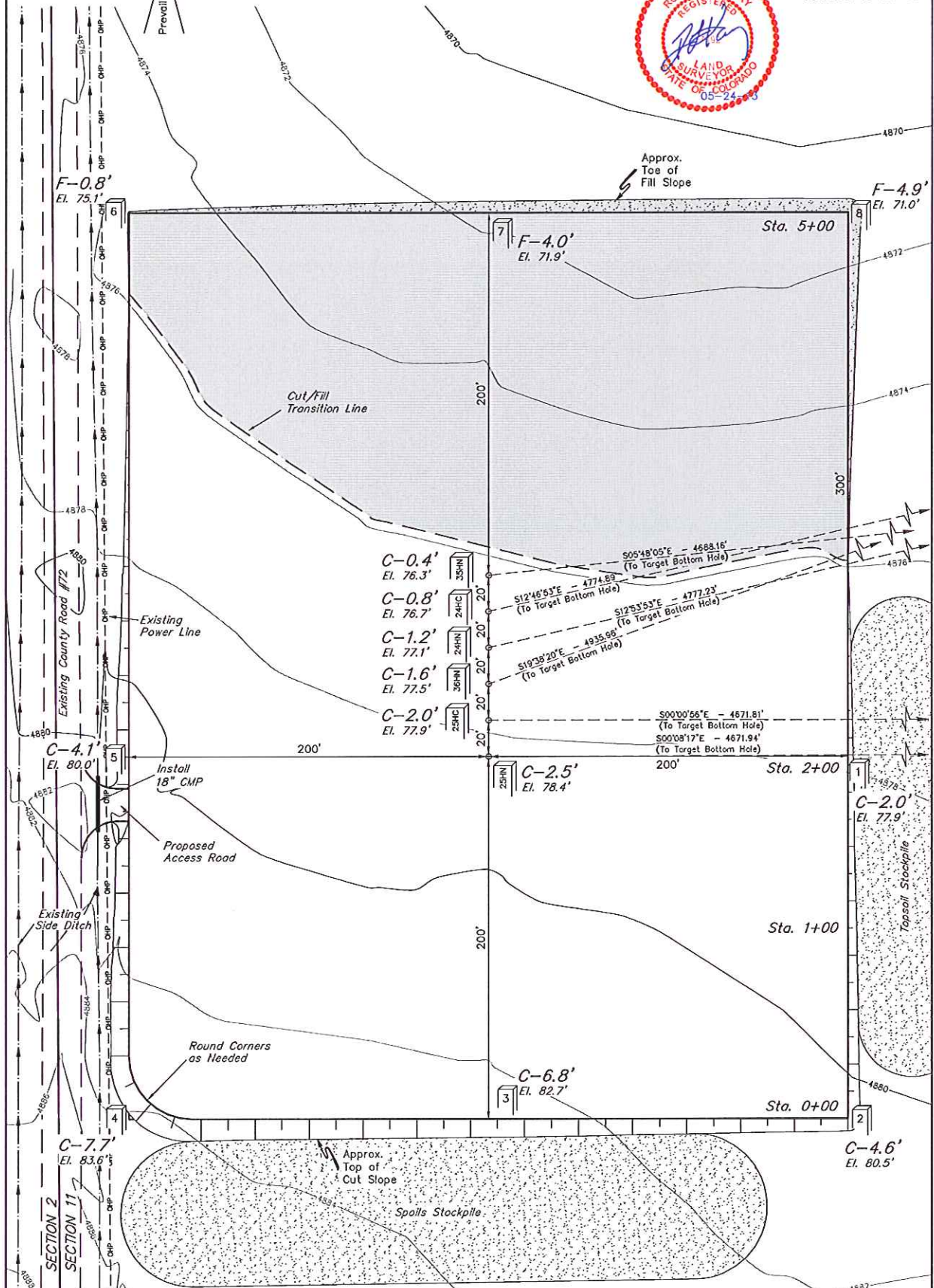


GREAT WESTERN OIL & GAS COMPANY  
CONSTRUCTION LAYOUT FOR  
TAILHOLT FD #11-25HN, #11-25HC, #11-36HN,  
#11-24HN, #11-24HC & #11-35HN  
SECTION 11, T6N, R67W, 6th P.M.  
NW 1/4 NW 1/4

FIGURE #1

SCALE: 1" = 50'  
DATE: 07-26-12  
DRAWN BY: J.W.  
REVISED: 08-21-12  
REVISED: 09-06-12  
REVISED: 10-12-12  
REVISED: 03-26-13  
REVISED: 05-24-13



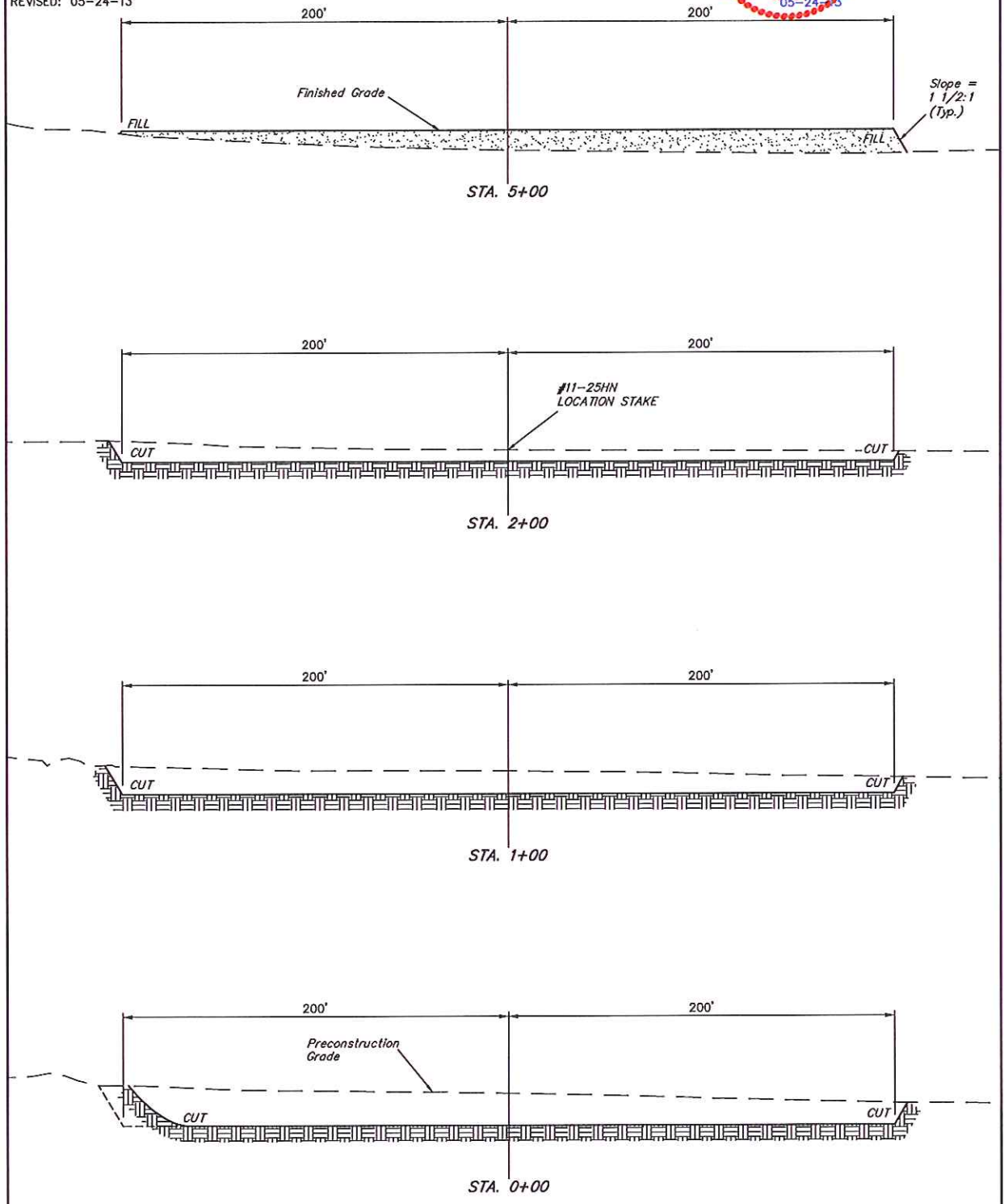
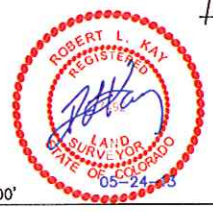
Elev. Ungraded Ground At #11-25HN Loc. Stake = 4878.4'  
FINISHED GRADE ELEV. AT #11-25HN LOC. STAKE = 4875.9'

UINTAH ENGINEERING & LAND SURVEYING  
85 So. 200 East • Vernal, Utah 84078 • (435) 789-1017

1" = 20'  
 X-Section Scale  
 1" = 50'  
 DATE: 07-26-12  
 DRAWN BY: J.W.  
 REVISED: 09-06-12  
 REVISED: 10-12-12  
 REVISED: 03-26-13  
 REVISED: 05-24-13

GREAT WESTERN OIL & GAS COMPANY  
 CONSTRUCTION LAYOUT CROSS SECTIONS FOR  
 TAILHOLT FD #11-25HN, #11-25HC, #11-36HN,  
 #11-24HN, #11-24HC & #11-35HN  
 SECTION 11, T6N, R67W, 6th P.M.  
 NW 1/4 NW 1/4

FIGURE #2



NOTE:  
 Topsoil should not be  
 Stripped Below Finished  
 Grade on Substructure Area.

\* NOTE:  
 FILL QUANTITY INCLUDES  
 5% FOR COMPACTION

APPROXIMATE YARDAGES

(6") Topsoil Stripping	= 3,900 Cu. Yds.
Remaining Location	= 14,460 Cu. Yds.
<b>TOTAL CUT</b>	<b>= 18,360 CU. YDS.</b>
<b>FILL</b>	<b>= 6,720 CU. YDS.</b>

EXCESS MATERIAL	= 11,640 Cu. Yds.
Topsoil	= 3,900 Cu. Yds.
<b>EXCESS UNBALANCE</b>	<b>= 7,740 Cu. Yds.</b>
(After Interim Rehabilitation)	

APPROXIMATE ACREAGES

WELL SITE DISTURBANCE	= ± 5.805 ACRES
ACCESS ROAD DISTURBANCE	= ± 0.019 ACRES
<b>TOTAL</b>	<b>= ± 5.824 ACRES</b>

UINTEAH ENGINEERING & LAND SURVEYING  
 85 So. 200 East • Vernal, Utah 84078 • (435) 769-1017