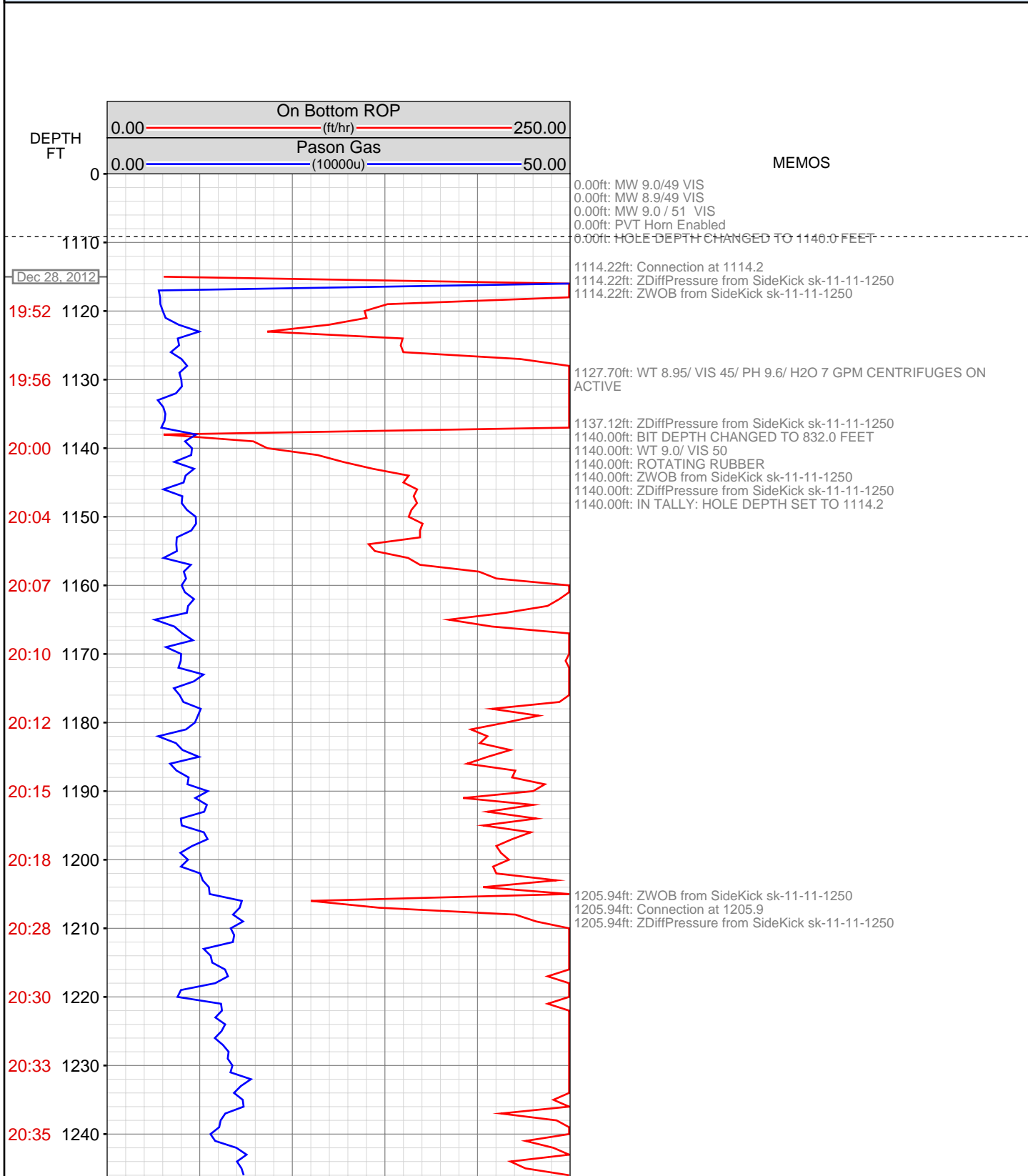


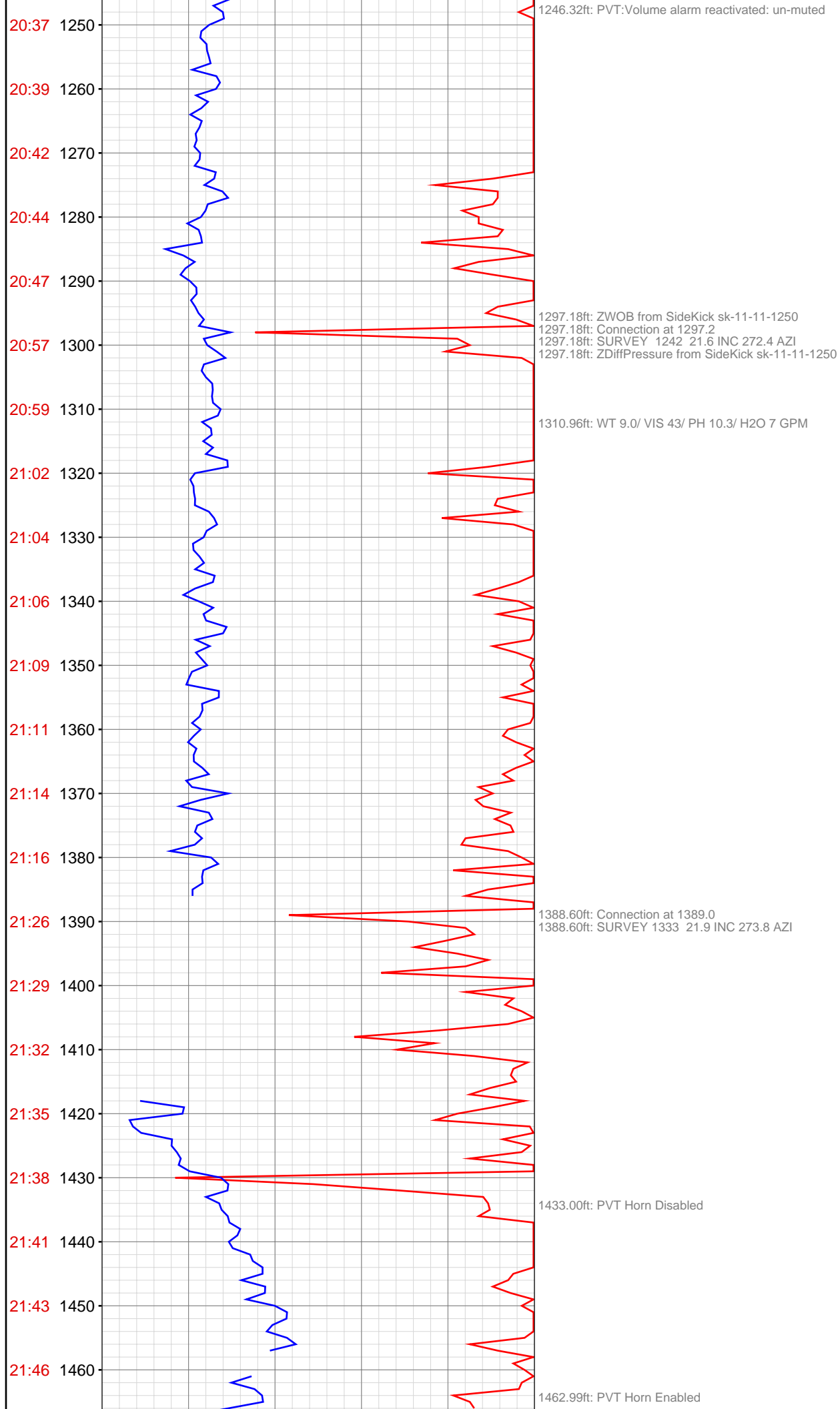
DataHub EDR Log

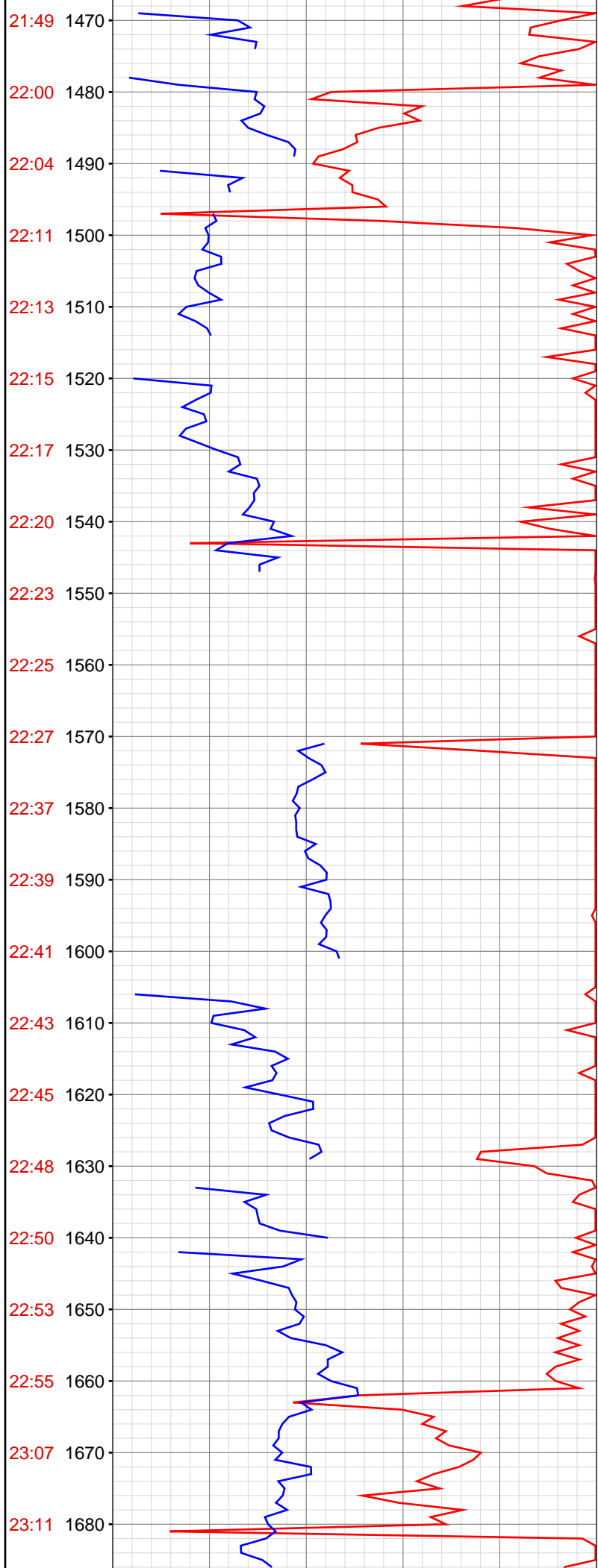
Wed Jan 02, 2013 10:16:57
Well Dossier 1356723758
Greg Veregin

OPERATOR: EnCana Oil & Gas (USA), Inc.
WELL: SHIDELER FEE 31-13CC
FIELD:
LOCATION: SW SE SEC 31, T007S, R92W
COUNTRY: USA
RIG: Pat-UTI 303

CONTRACTOR: Patterson-UTI Drilling Company
UNIQUE WELL ID: 05-045-21737-00
SPUD DATE: Dec 28, 2012 20:00
RELEASE DATE:







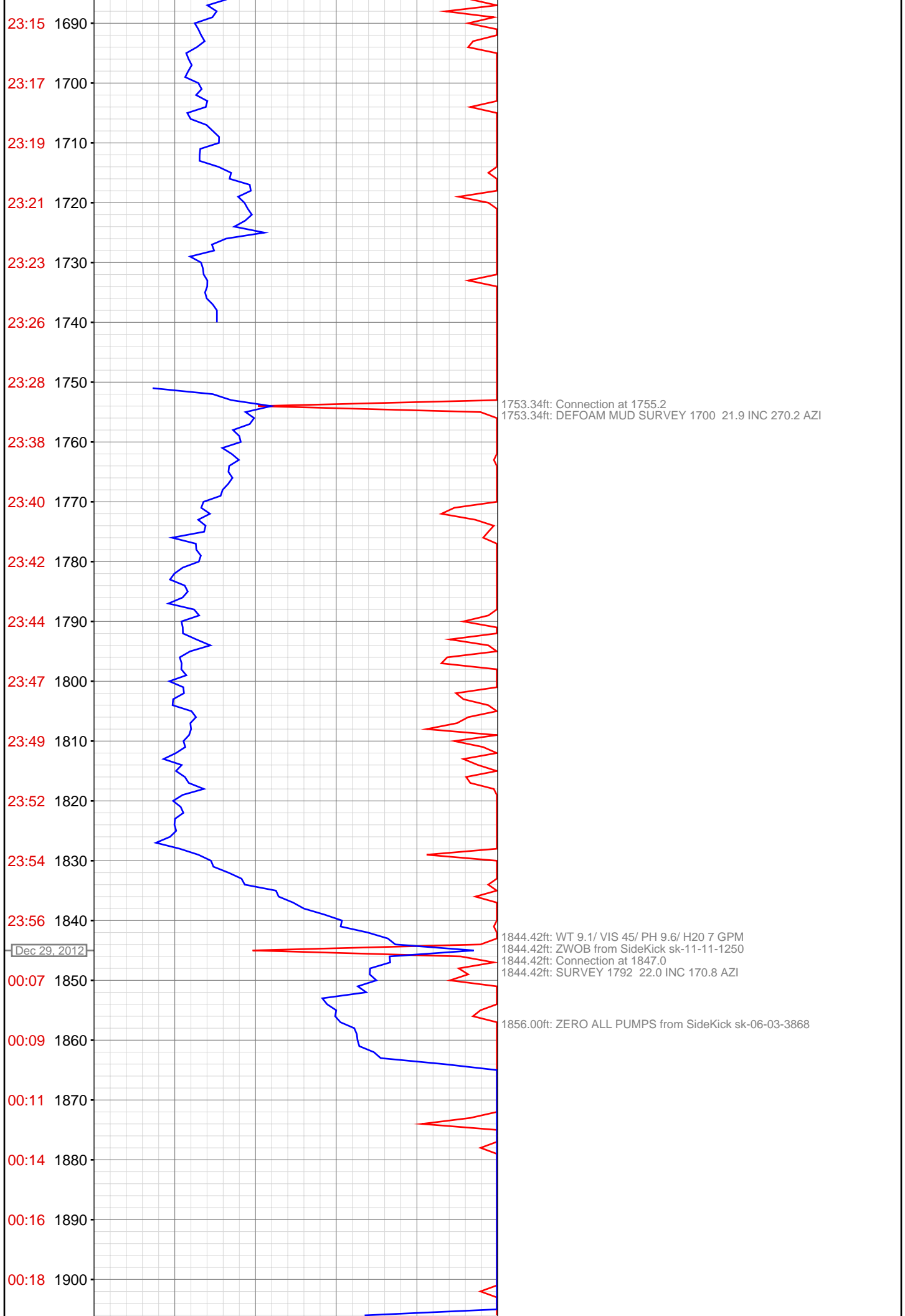
1479.92ft: Connection at 1480.8
1479.92ft: ZDiffPressure from SideKick sk-11-11-1250
1479.92ft: PVT Horn Disabled
1479.92ft: PVT Horn Enabled
1479.92ft: SURVEY 1425 20.9 INC 274.2 AZI
1481.97ft: WT 9.0/ VIS 45/ PH 10.1/ H2O 7 GPM

1570.84ft: Connection at 1572.6
1570.84ft: SURVEY 1517 21.6 INC 272.7 AZI

1587.13ft: ZERO ALL PUMPS from SideKick sk-06-03-3868

1662.00ft: Connection at 1663.6
1662.00ft: ZWOB from SideKick sk-11-11-1250
1662.00ft: WT 9.0/ VIS 44/ PH 9.5/ H2O 7 GPM
1662.00ft: ZDiffPressure from SideKick sk-11-11-1250
1662.00ft: SURVEY 1608 21.1 INC 273.5 AZI

1680.38ft: ZERO ALL PUMPS from SideKick sk-06-03-3868



23:15 1690

23:17 1700

23:19 1710

23:21 1720

23:23 1730

23:26 1740

23:28 1750

23:38 1760

23:40 1770

23:42 1780

23:44 1790

23:47 1800

23:49 1810

23:52 1820

23:54 1830

23:56 1840

Dec 29, 2012

00:07 1850

00:09 1860

00:11 1870

00:14 1880

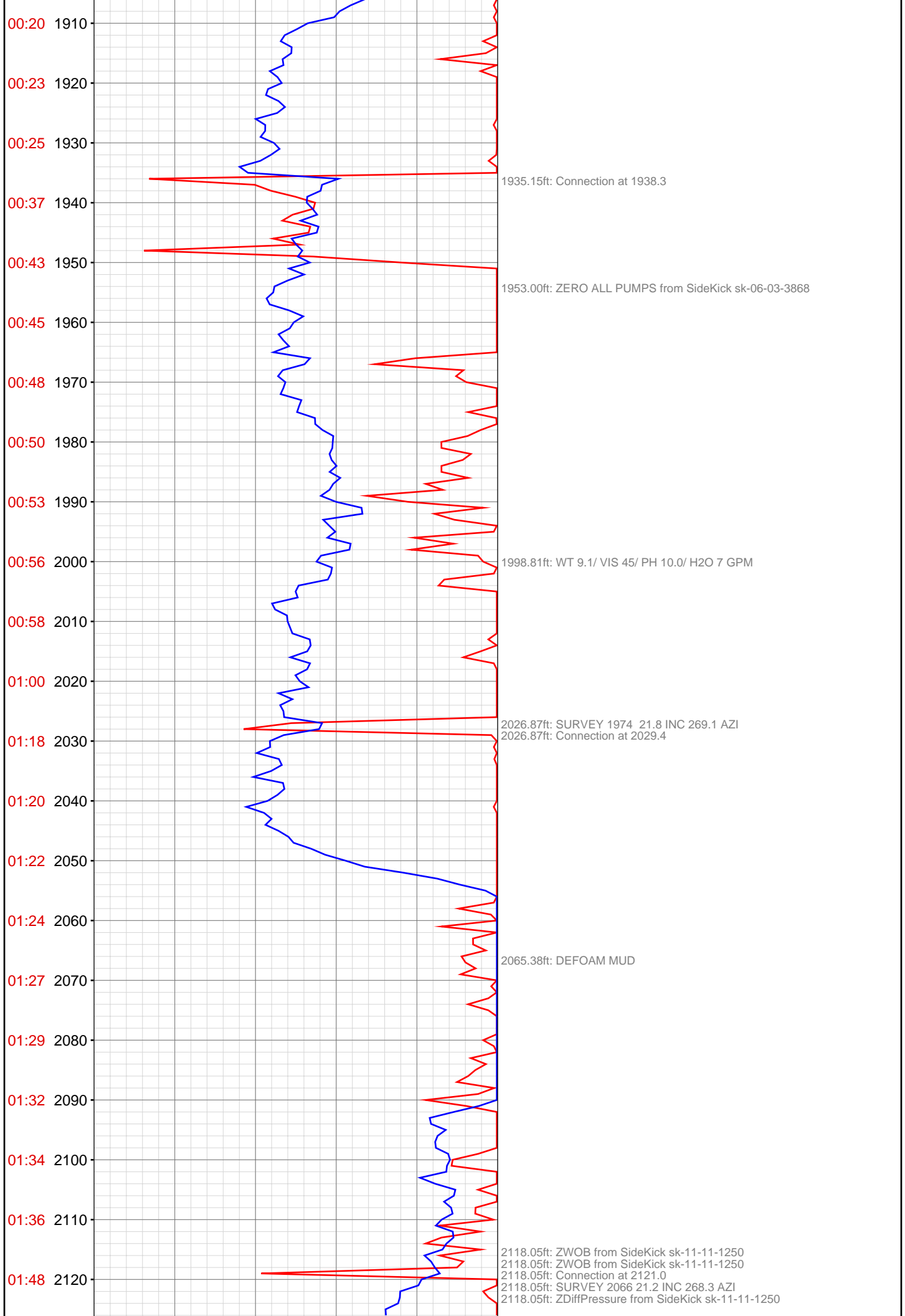
00:16 1890

00:18 1900

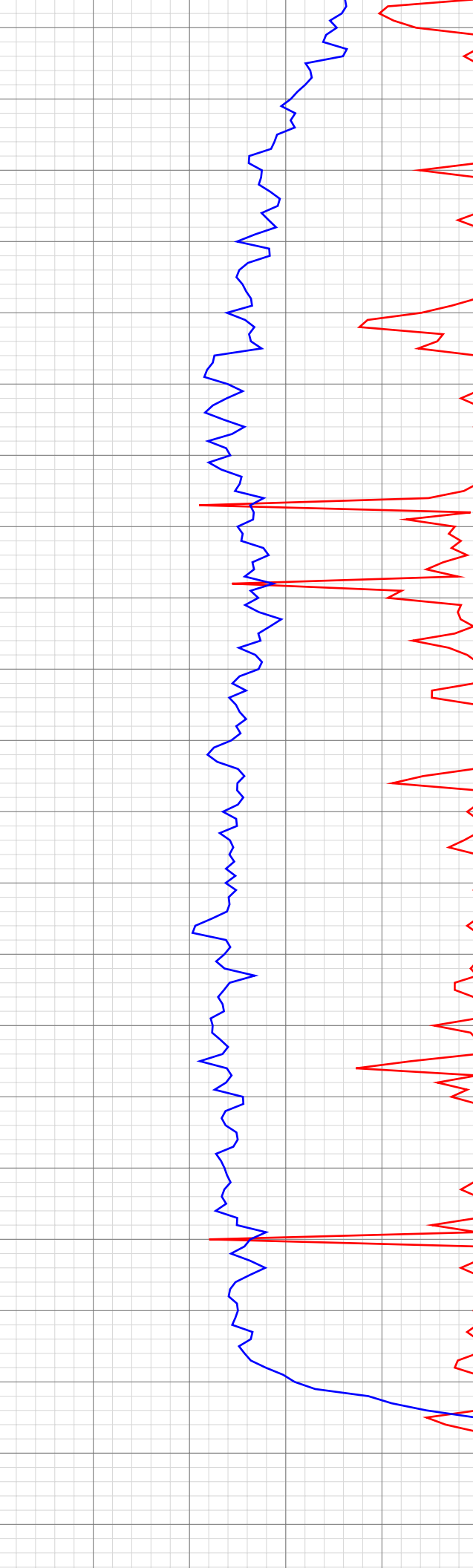
1753.34ft: Connection at 1755.2
1753.34ft: DEFOAM MUD SURVEY 1700 21.9 INC 270.2 AZI

1844.42ft: WT 9.1/ VIS 45/ PH 9.6/ H2O 7 GPM
1844.42ft: ZWOB from SideKick sk-11-11-1250
1844.42ft: Connection at 1847.0
1844.42ft: SURVEY 1792 22.0 INC 170.8 AZI

1856.00ft: ZERO ALL PUMPS from SideKick sk-06-03-3868



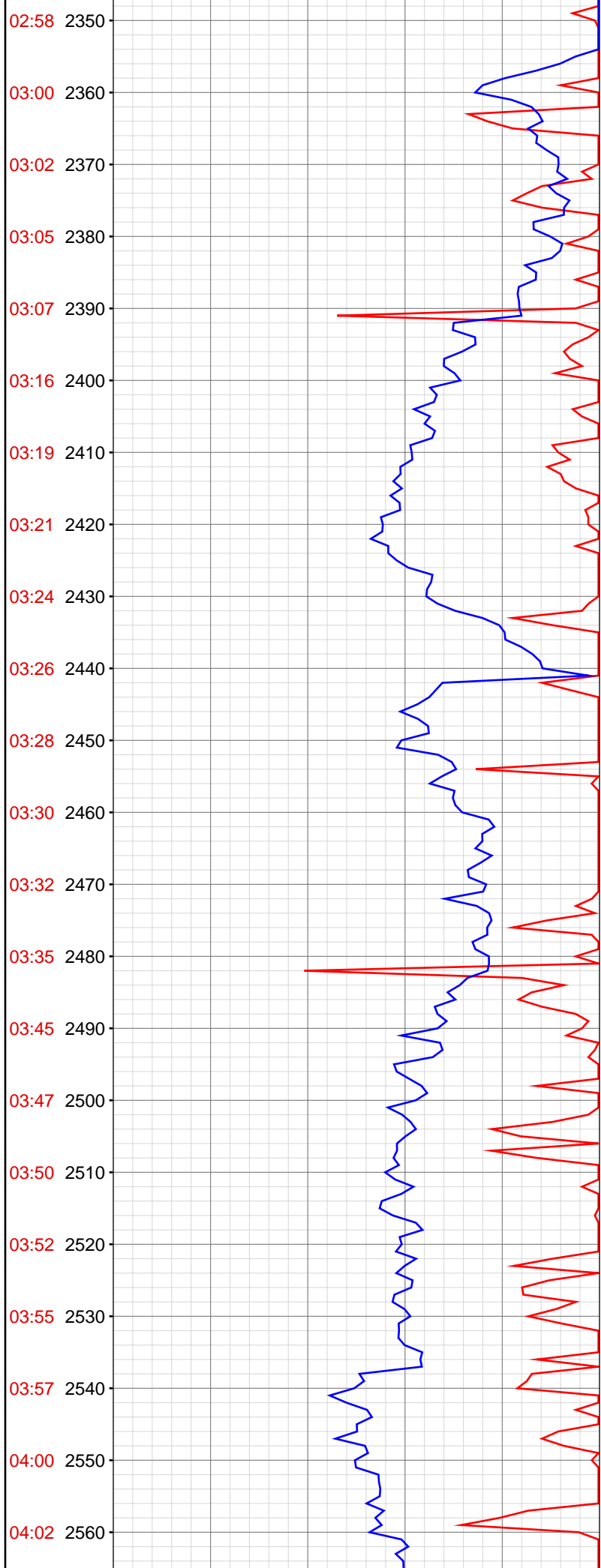
01:51 2130
01:53 2140
01:55 2150
01:57 2160
02:00 2170
02:02 2180
02:05 2190
02:07 2200
02:18 2210
02:20 2220
02:22 2230
02:25 2240
02:27 2250
02:29 2260
02:31 2270
02:34 2280
02:36 2290
02:46 2300
02:49 2310
02:51 2320
02:53 2330
02:55 2340



2168.93ft: WT 9.1/ VIS 44/ PH 10.0/ H2O 7 GPM

2207.88ft: Connection at 2212.4
2207.88ft: SURVEY 2157 21.2 INC 268.8 AZI

2296.69ft: PUMP OUT CELLAR
2299.03ft: ZWOB from SideKick sk-11-11-1250
2299.03ft: SURVEY 2249 21.1 INC 269.6 AZI
2299.03ft: Connection at 2304.1
2299.03ft: ZDiffPressure from SideKick sk-11-11-1250
2301.00ft: ZERO ALL PUMPS from SideKick sk-06-03-3868



02:58 2350

03:00 2360

03:02 2370

03:05 2380

03:07 2390

03:16 2400

03:19 2410

03:21 2420

03:24 2430

03:26 2440

03:28 2450

03:30 2460

03:32 2470

03:35 2480

03:45 2490

03:47 2500

03:50 2510

03:52 2520

03:55 2530

03:57 2540

04:00 2550

04:02 2560

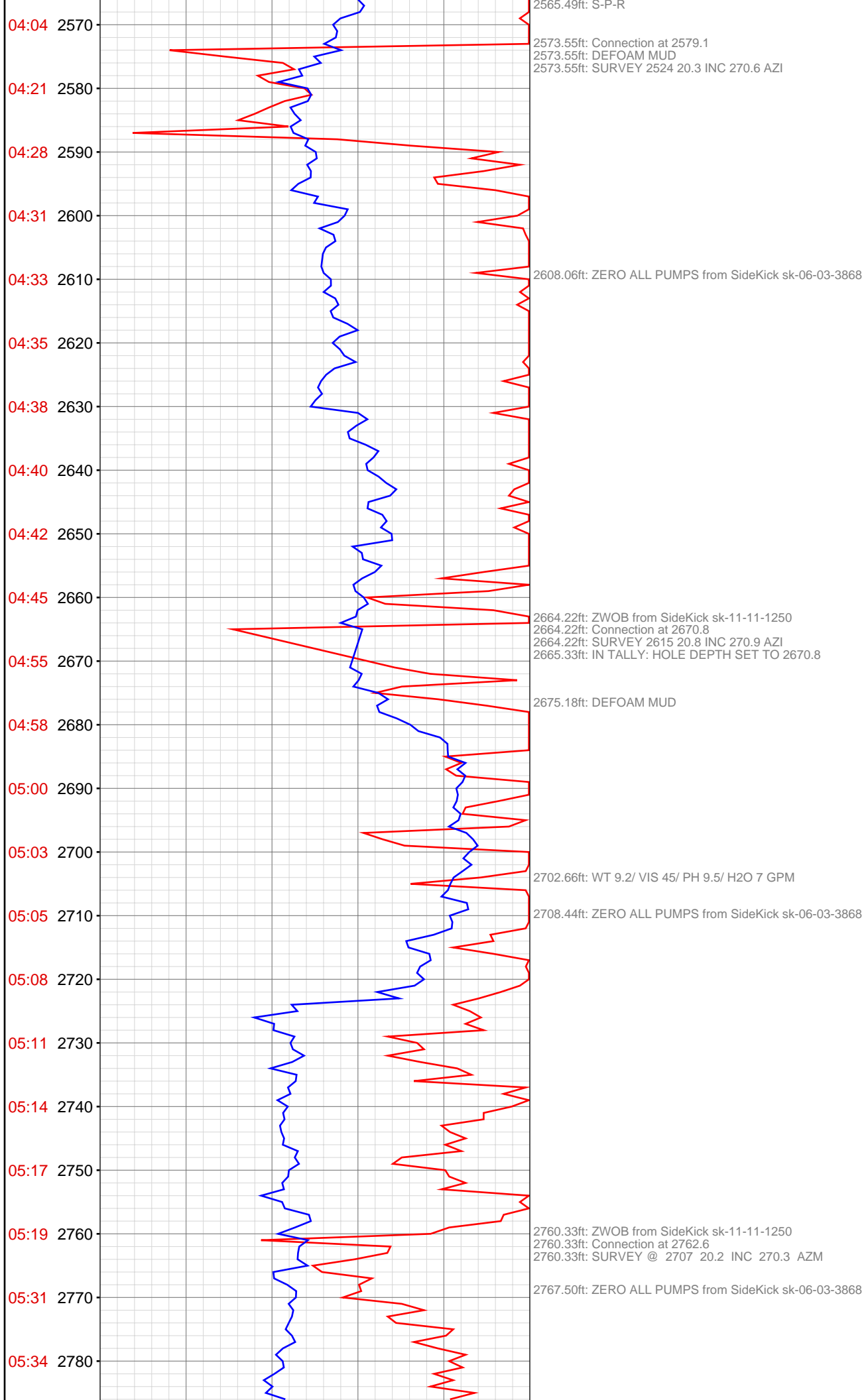
2390.51ft: Connection at 2395.8

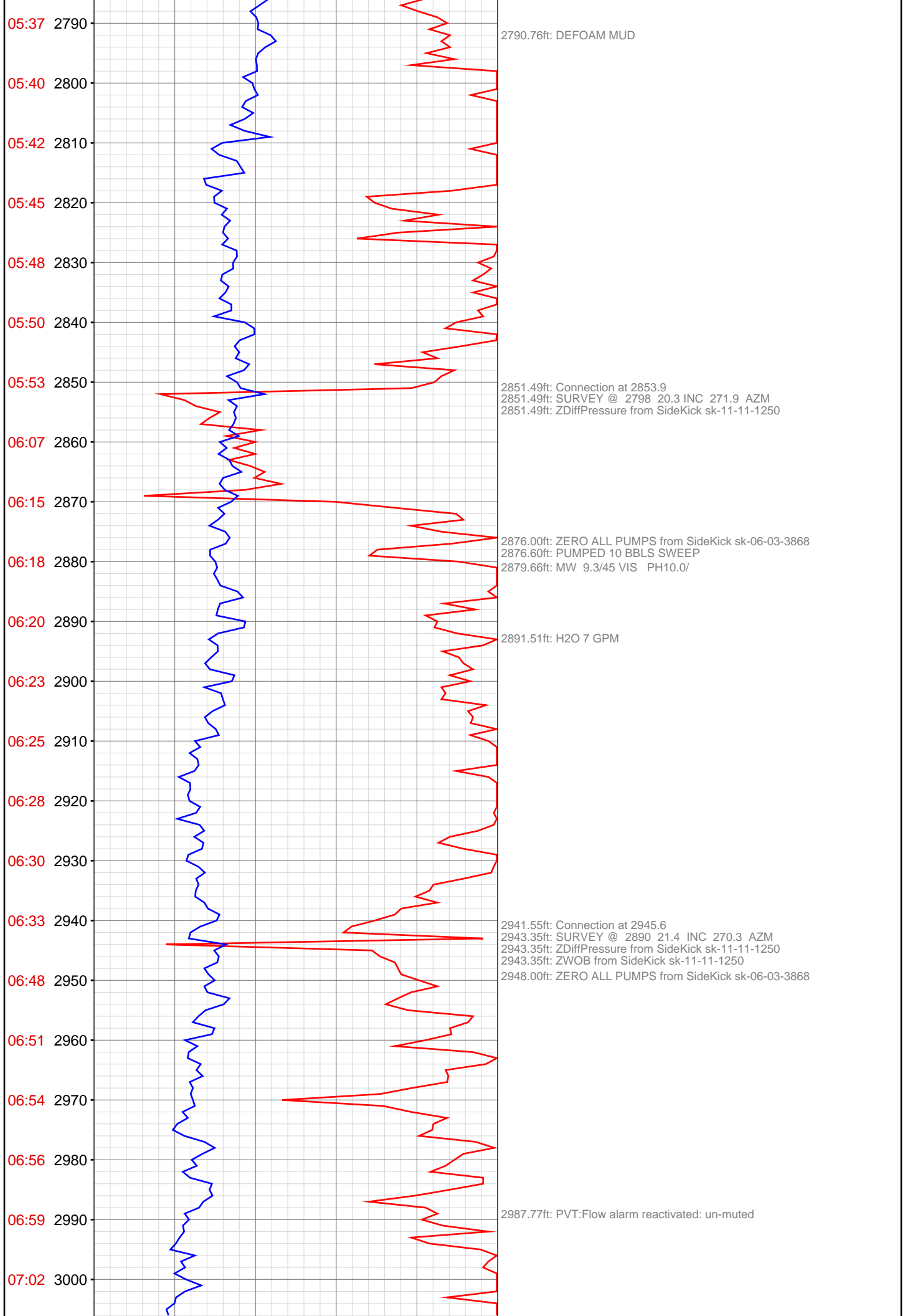
2396.19ft: SURVEY 2340 20.8 INC 269.4 AZI

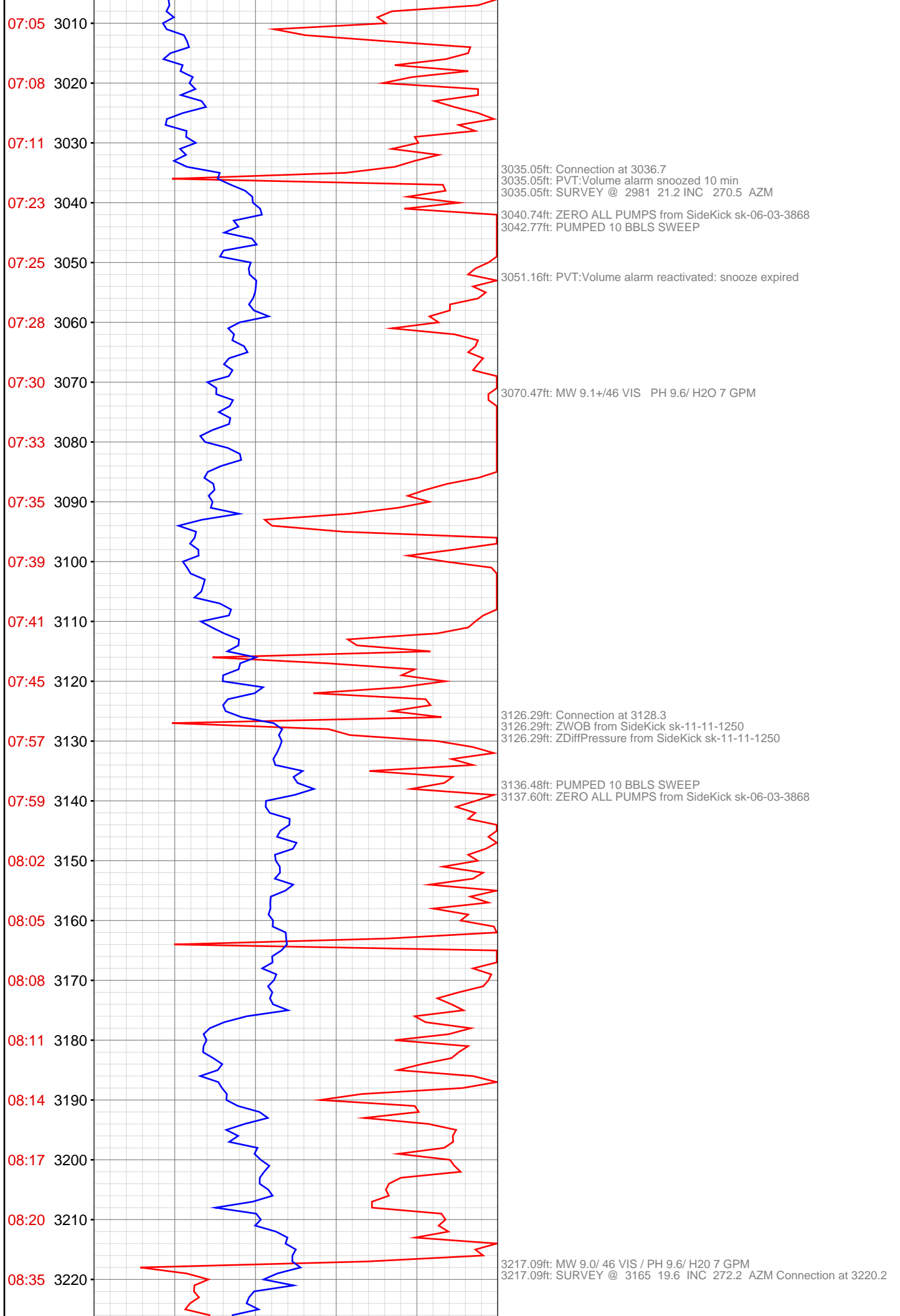
2481.95ft: DEFOAM MUD
2481.95ft: ZWOB from SideKick sk-11-11-1250
2481.95ft: Connection at 2487.4
2481.95ft: SURVEY 2432 20.9 INC 270.3 AZI

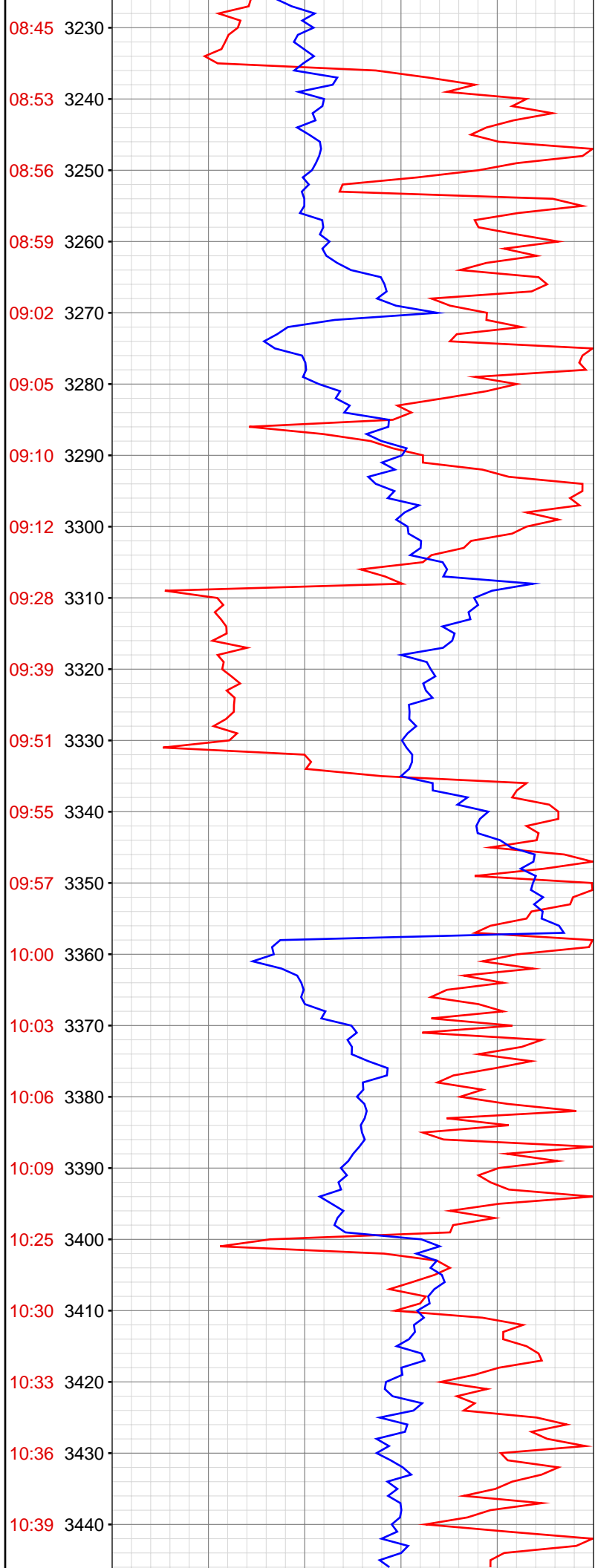
2502.00ft: ZERO ALL PUMPS from SideKick sk-06-03-3868

2524.61ft: WT 9.2/ VIS 45/ PH 9.9/ H2O 7 GPM









3238.34ft: ZERO ALL PUMPS from SideKick sk-06-03-3868
3238.88ft: PUMPED 15 BBLS SWEEP

3308.04ft: SURVEY @ 3256 20.1 INC 271.2 AZM
3308.04ft: Connection at 3311.4
3308.04ft: PVT:Flow alarm snoozed 10 min
3308.04ft: ZDiffPressure from SideKick sk-11-11-1250
3310.14ft: MW 9.0/ 47 VIS/ PH 9.4/ H2O 7 GPM

3315.58ft: PVT:Flow alarm reactivated: snooze expired

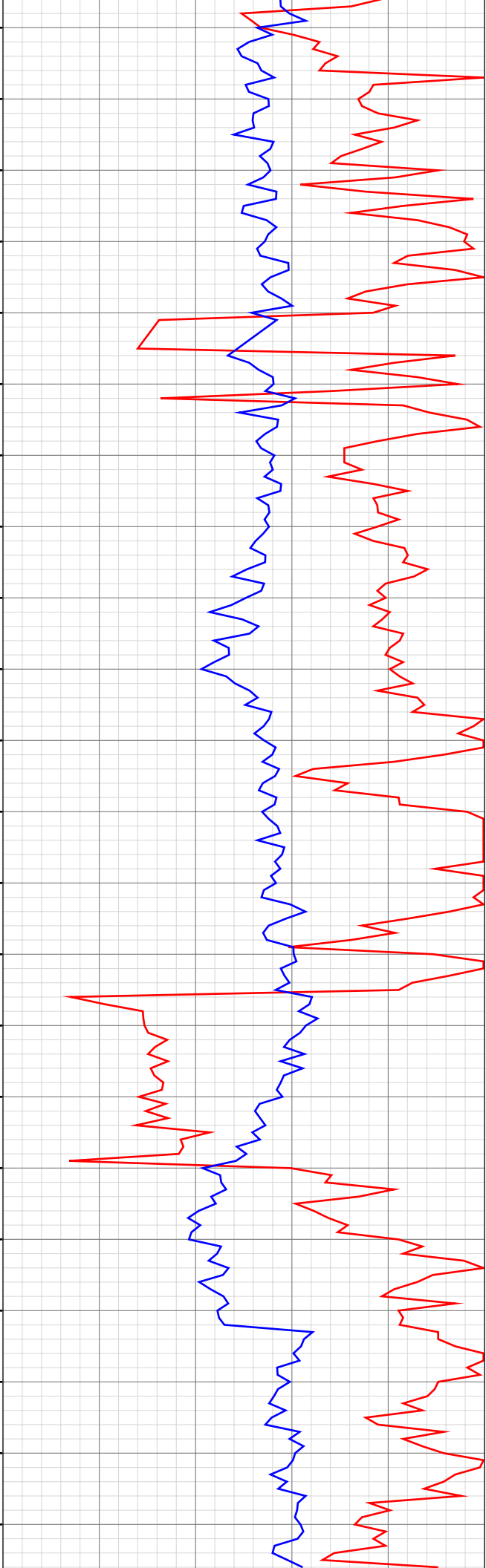
3327.89ft: ADDING DEFOMER
3330.68ft: ZDiffPressure from SideKick sk-11-11-1250

3355.71ft: ZERO ALL PUMPS from SideKick sk-06-03-3868
3358.76ft: PUMPED 10 BBLS SWEEP

3399.61ft: Connection at 3403.0
3399.61ft: SURVEY @ 3347 21.3 INC 269.4 AZM
3399.61ft: PVT:Flow alarm snoozed 10 min
3399.61ft: ZDiffPressure from SideKick sk-11-11-1250
3399.61ft: ZWOB from SideKick sk-11-11-1250
3400.33ft: PVT:Flow alarm reactivated: snooze cancelled
3406.00ft: ZERO ALL PUMPS from SideKick sk-06-03-3868
3406.99ft: PUMPED 10 BBLS SWEEP

3419.59ft: MW 9.2+/45 VIS PH 9.4 /H2O 7 GPM

10:42 3450
10:45 3460
10:48 3470
10:52 3480
11:04 3490
11:07 3500
11:10 3510
11:13 3520
11:17 3530
11:20 3540
11:22 3550
11:25 3560
11:27 3570
11:30 3580
11:46 3590
11:53 3600
12:02 3610
12:05 3620
12:08 3630
12:11 3640
12:13 3650
12:16 3660

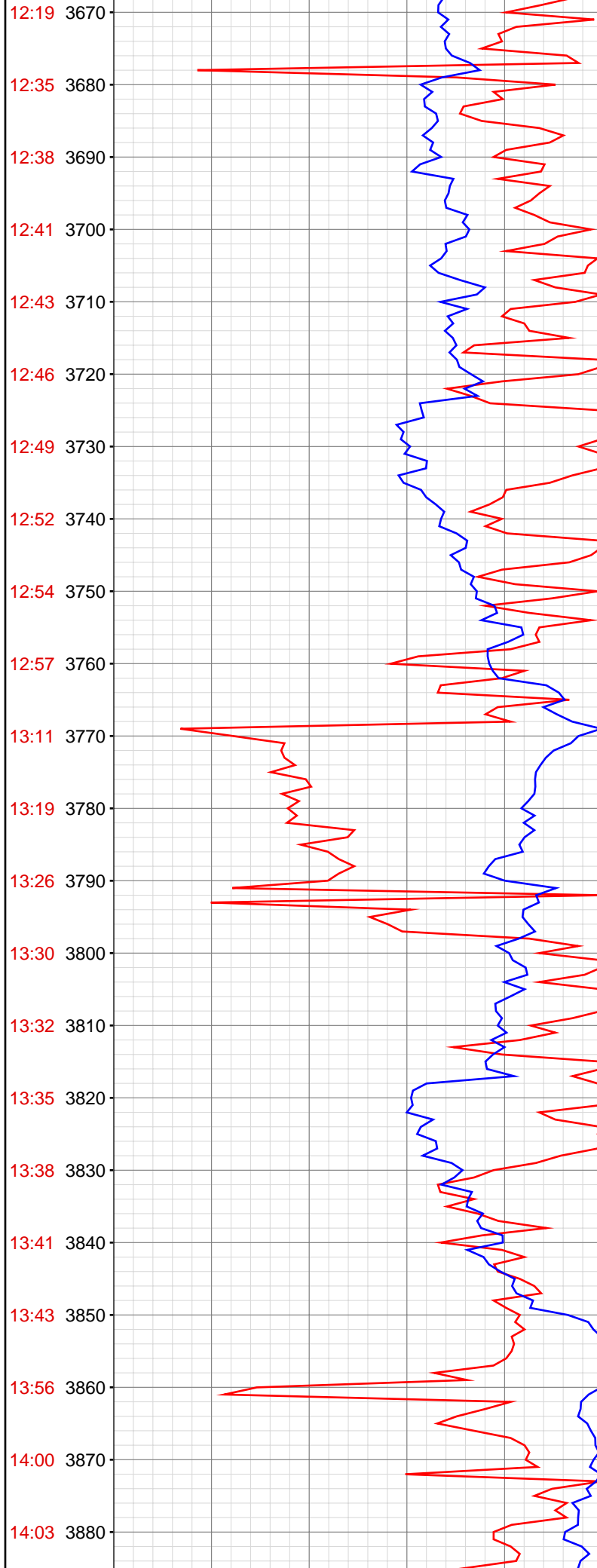


3490.75ft: Connection at 3494.6
3490.75ft: SURVEY @ 3439 20.5 INC 270.7 AZM
3490.75ft: ZDiffPressure from SideKick sk-11-11-1250
3491.37ft: IN TALLY: HOLE DEPTH SET TO 3494.6

3501.77ft: ZERO ALL PUMPS from SideKick sk-06-03-3868
3504.13ft: PUMPED 10BBL SWEEP

3585.63ft: Connection at 3586.2
3585.63ft: SURVEY @ 3531 19.8 INC 271.8 AZM
3585.63ft: MW 9.25/ 50 VIS PH 9.2/H2O 7 GPM

3613.58ft: ZERO ALL PUMPS from SideKick sk-06-03-3868
3614.96ft: PUMPED 10 BBL SWEEP



3677.23ft: SURVEY @ 3622 20.7 INC 270.7 AZM Connection at 3677.5
 3677.23ft: PVT:Flow alarm snoozed 10 min
 3677.23ft: ZDiffPressure from SideKick sk-11-11-1250
 3677.23ft: ZWOB from SideKick sk-11-11-1250
 3679.07ft: PVT:Flow alarm reactivated: snooze cancelled
 3681.99ft: ZERO ALL PUMPS from SideKick sk-06-03-3868

3689.11ft: PUMPED 10 BBLs SWEEP

3711.22ft: MW 9.3/ 45 VIS PH 9.6/ H2O 7 GPM

3768.73ft: Connection at 3769.3
 3768.73ft: PVT:Volume alarm snoozed 10 min
 3768.73ft: SURVEY @ 3714 20.3 INC 272.5 AZM
 3768.73ft: PVT:Flow alarm snoozed 10 min PVT:Volume alarm reactivated:
 snooze cancelled
 3768.73ft: ZDiffPressure from SideKick sk-11-11-1250
 3773.43ft: PVT:Flow alarm reactivated: snooze expired

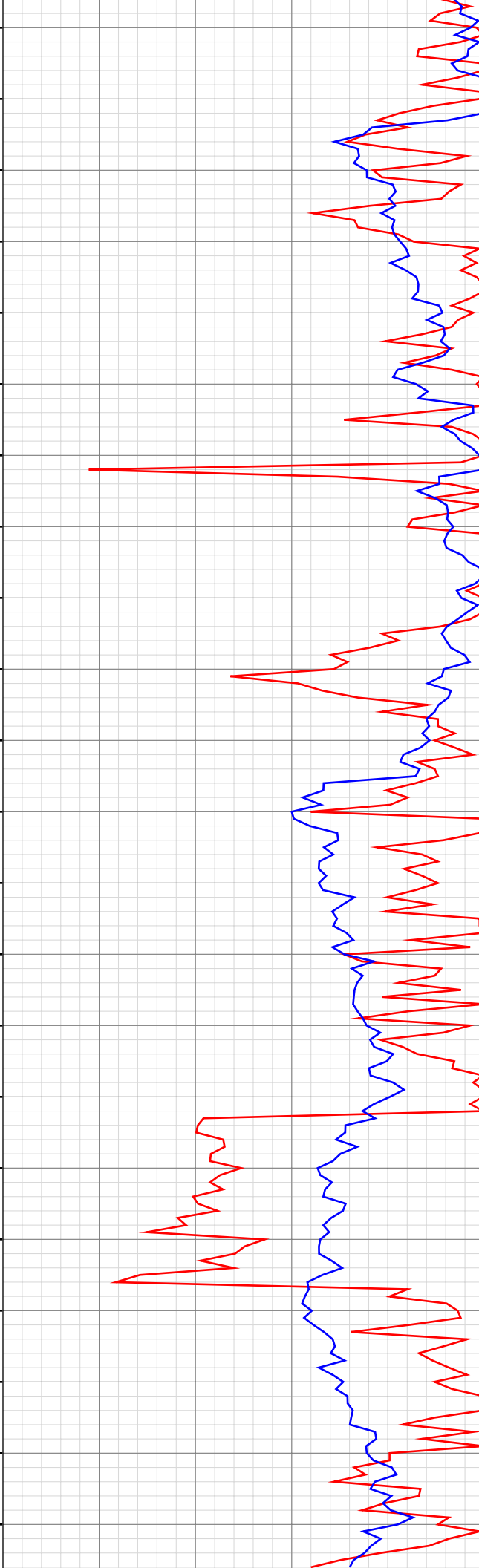
3796.13ft: ZERO ALL PUMPS from SideKick sk-06-03-3868 SENT 10 BBLs SWEEP

3859.81ft: PVT:Volume alarm reactivated: un-muted
 3859.81ft: PVT:Flow alarm muted
 3859.81ft: Connection at 3860.9
 3859.81ft: SURVEY @ 3805 21.1 INC 272.2 AZM
 3859.81ft: ZWOB from SideKick sk-11-11-1250
 3859.81ft: PVT:Flow alarm reactivated: un-muted ZDiffPressure from
 SideKick sk-11-11-1250

3874.34ft: ZERO ALL PUMPS from SideKick sk-06-03-3868

3878.74ft: MW 9.4/ 44 VIS / PH 9.5/ H2O 7 GPM
 3881.99ft: SENT 10 BBLs SWEEP

14:06 3890
14:08 3900
14:11 3910
14:14 3920
14:17 3930
14:19 3940
14:22 3950
14:34 3960
14:36 3970
14:39 3980
14:42 3990
14:45 4000
14:47 4010
14:50 4020
14:53 4030
14:56 4040
15:10 4050
15:16 4060
15:22 4070
15:25 4080
15:28 4090
15:31 4100



3951.31ft: Connection at 3952.5
3951.31ft: PVT:Flow alarm snoozed 10 min
3951.31ft: SURVEY @ 3897 20.5 INC 273.1 AZM

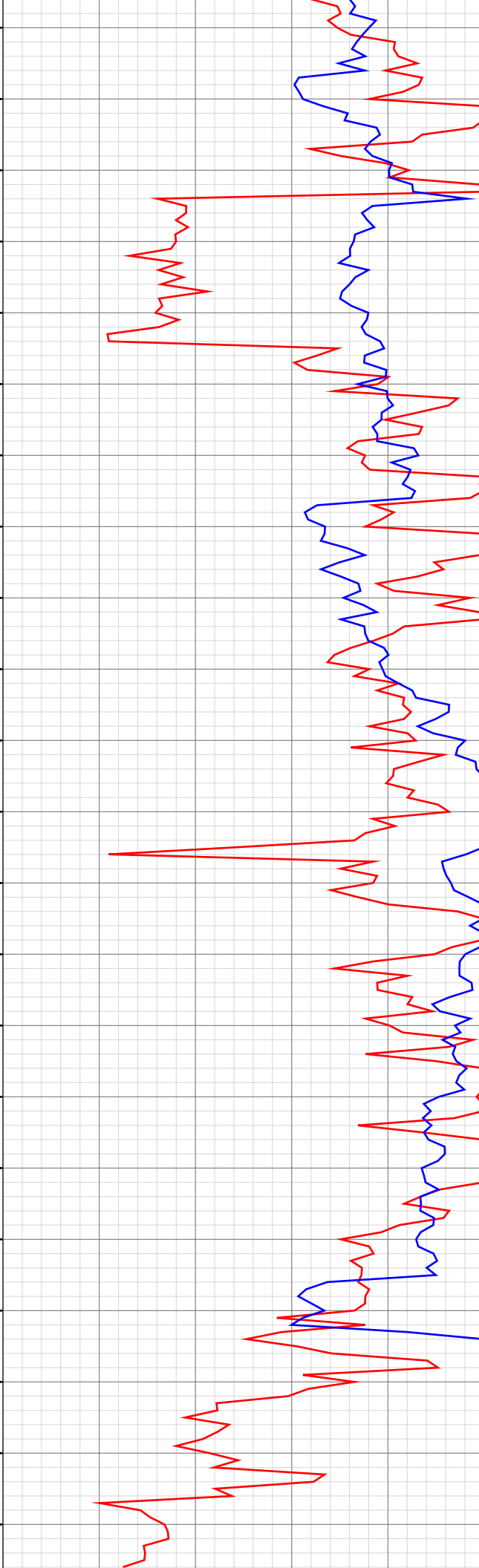
3966.37ft: ZERO ALL PUMPS from SideKick sk-06-03-3868
3968.67ft: PUMPED 15 BBLS SWEEP

3974.02ft: PVT:Flow alarm reactivated: snooze expired

4042.82ft: PVT:Flow alarm muted
4042.82ft: MW 9.5/45 VIS PH 9.3/H2O 7 GPM Connection at 4044.0
4042.82ft: SURVEY @ 3988 19.6 INC 273.9 AZM
4042.82ft: ZDiffPressure from SideKick sk-11-11-1250

4071.00ft: ZERO ALL PUMPS from SideKick sk-06-03-3868

15:34 4110
15:37 4120
15:40 4130
16:17 4140
16:23 4150
16:30 4160
16:33 4170
16:36 4180
16:39 4190
16:41 4200
16:44 4210
16:47 4220
17:01 4230
17:03 4240
17:06 4250
17:08 4260
17:11 4270
17:14 4280
17:17 4290
17:20 4300
17:26 4310
17:43 4320



4133.56ft: RIG SERVICE
4133.56ft: SURVEY @ 4080 20.8 INC 273.8 AZM Connection at 4135.5
4133.56ft: ZDIFF from DHC

4152.85ft: ZWOB from SideKick sk-11-11-1250
4152.85ft: ZDiffPressure from SideKick sk-11-11-1250

4158.07ft: ZERO ALL PUMPS from SideKick sk-06-03-3868
4161.29ft: PUMPED 15 BBLS SWEEP

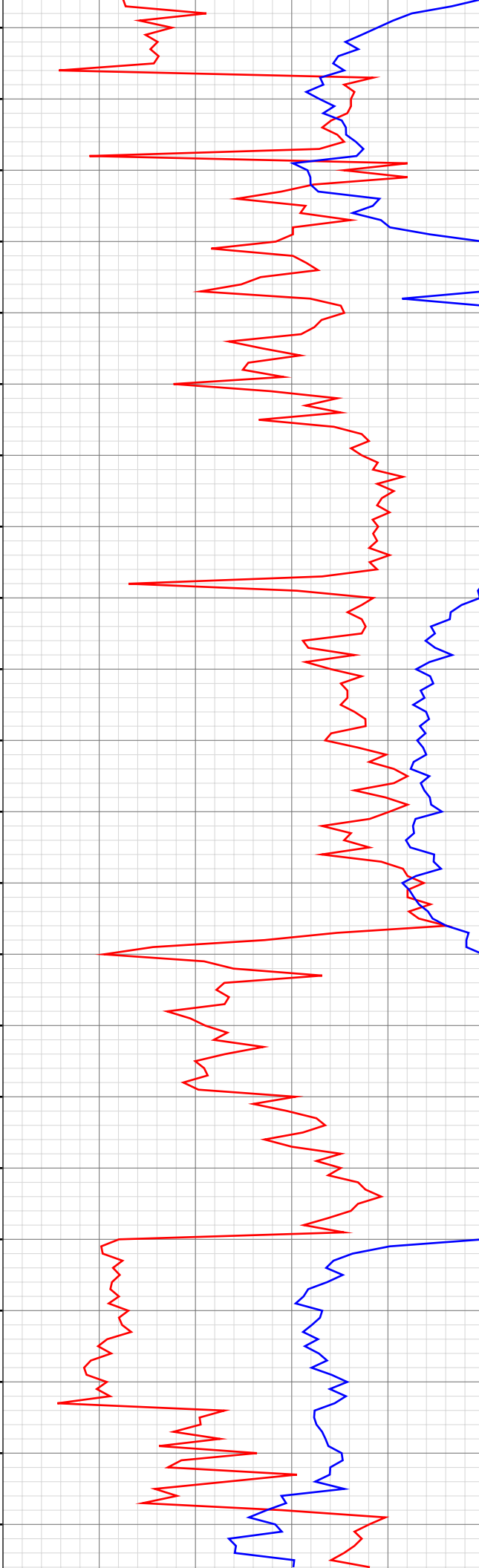
4178.77ft: MW 9.1+/46 VIS PH 9.0/ H2O 7 GPM

4224.97ft: SURVEY 4172 20.2 INC 270.7 AZI
4224.97ft: Connection at 4227.2
4224.97ft: ZDiffPressure from SideKick sk-11-11-1250
4224.97ft: ZWOB from SideKick sk-11-11-1250

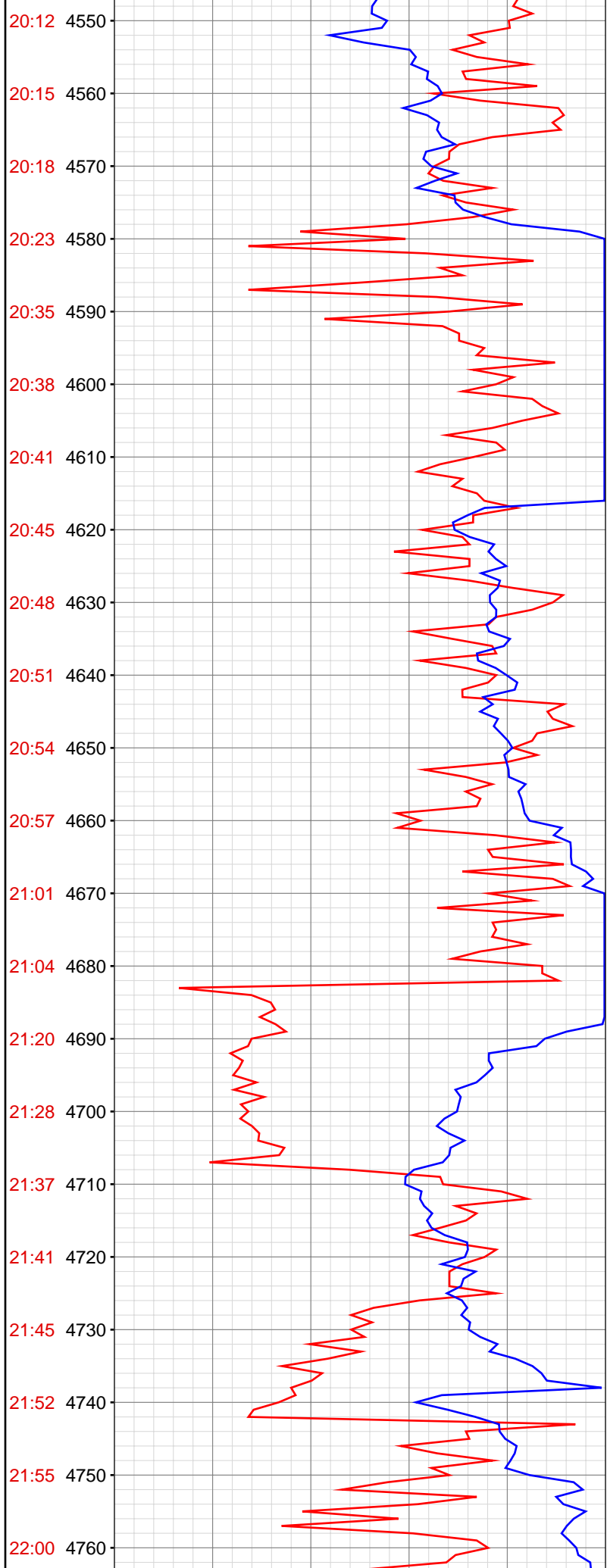
4232.64ft: ZERO ALL PUMPS from SideKick sk-06-03-3868
4233.86ft: PUMPED 15 BBLS SWEEP

4316.50ft: MW 9.1+/47 VIS PH 9.6/ H2O 7 GPM
4316.50ft: Connection at 4318.8
4316.50ft: ZDiffPressure from SideKick sk-11-11-1250
4316.50ft: SURVEY 4355 20.0 INC 272.3 AZI

17:51 4330
17:59 4340
18:08 4350
18:12 4360
18:17 4370
18:21 4380
18:25 4390
18:28 4400
18:44 4410
18:47 4420
18:51 4430
18:54 4440
18:57 4450
19:03 4460
19:08 4470
19:14 4480
19:18 4490
19:30 4500
19:41 4510
19:52 4520
20:04 4530
20:09 4540



4347.08ft: BOP DRILL
4355.48ft: WT 9.3/ VIS 45/ PH 9.8/ H2O 7 GPM
4407.58ft: ZWOB from SideKick sk-11-11-1250
4407.58ft: SURVEY 4355 19.8 INC 269.1 AZI
4407.58ft: Connection at 4410.6
4407.58ft: ZERO ALL PUMPS from SideKick sk-06-03-3868
4426.67ft: TRAN. 10 BBLS FROM DEWATER
4452.33ft: PUMP OUT CELLAR
4459.32ft: ZDiffPressure from SideKick sk-11-11-1250
4468.67ft: DEFOAM MUD
4499.25ft: Connection at 4501.9
4499.25ft: ZWOB from SideKick sk-11-11-1250
4500.07ft: SURVEY 446 19.2 INC 270.0 AZI
4522.80ft: WT 9.3/ VIS 44/ PH 9.2/ H2O 7 GPM
4530.45ft: ZERO ALL PUMPS from SideKick sk-06-03-3868
4534.48ft: TRAN. 10 BBLS FROM DEWATER



4590.65ft: Connection at 4593.6
4590.65ft: ZDiffPressure from SideKick sk-11-11-1250
4590.65ft: SURVEY 4538 20.4 INC 267.5 AZI
4593.41ft: ZERO ALL PUMPS from SideKick sk-06-03-3868

4657.45ft: WT 9.3/ VIS 44/ PH 9.6/ H2O 7 GPM

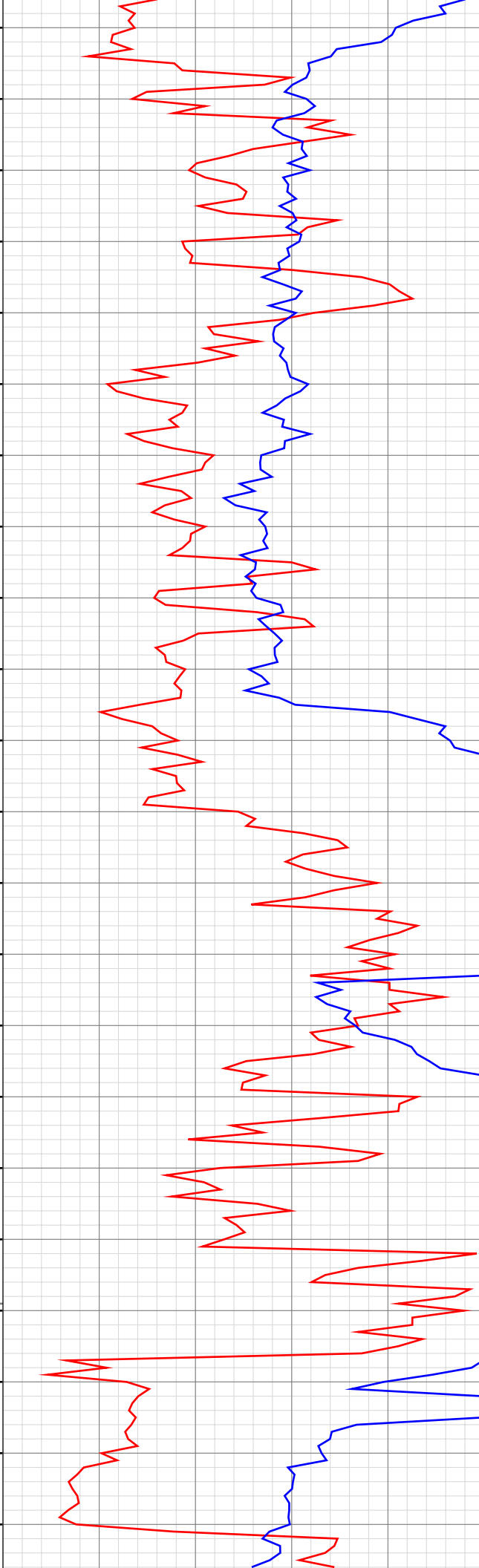
4682.22ft: ZWOB from SideKick sk-11-11-1250
4682.22ft: Connection at 4685.0
4682.22ft: SURVEY 4630 19.6 INC 267.9 AZI
4682.22ft: ZDiffPressure from SideKick sk-11-11-1250

4706.07ft: ZDiffPressure from SideKick sk-11-11-1250

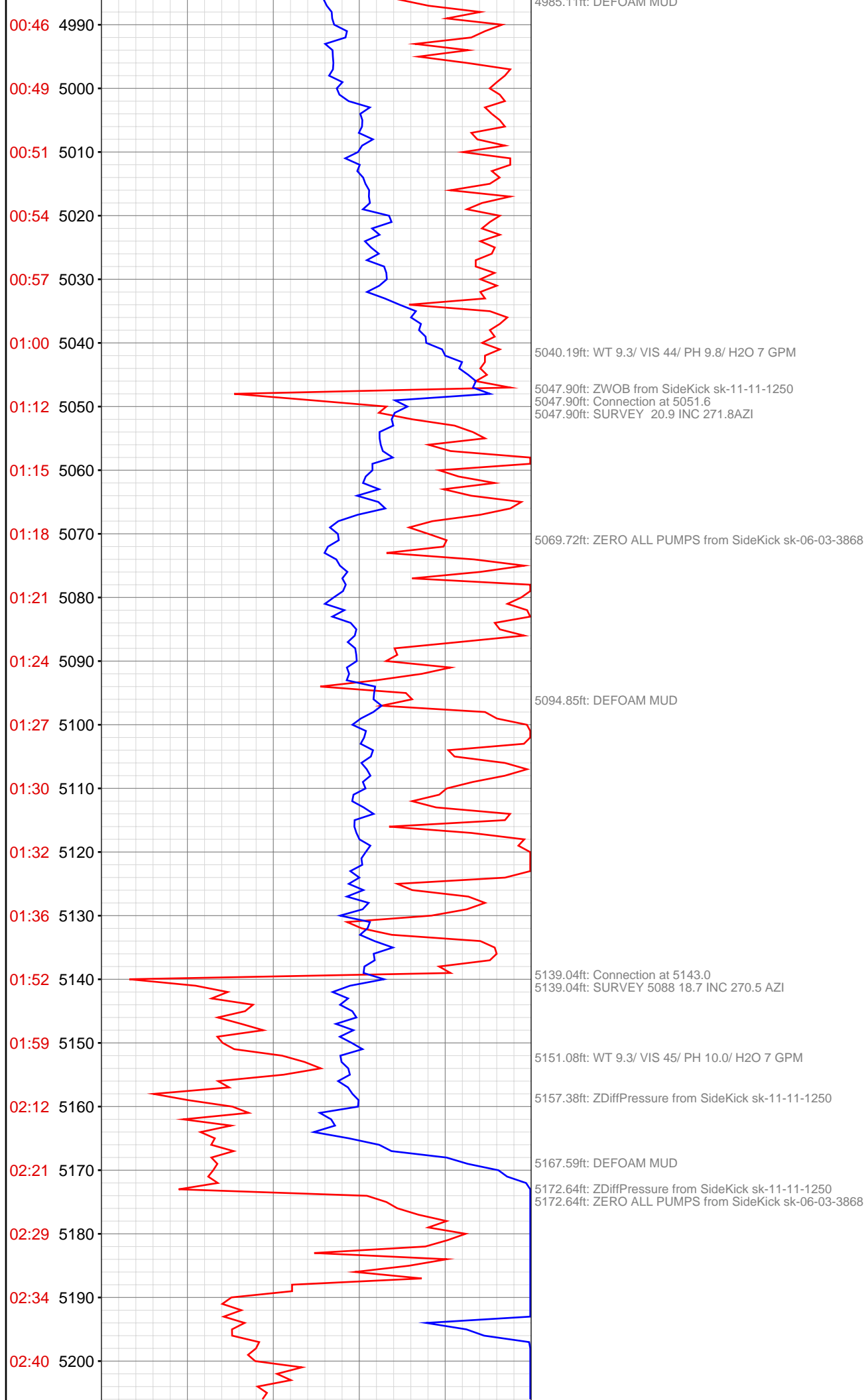
4715.09ft: ZERO ALL PUMPS from SideKick sk-06-03-3868

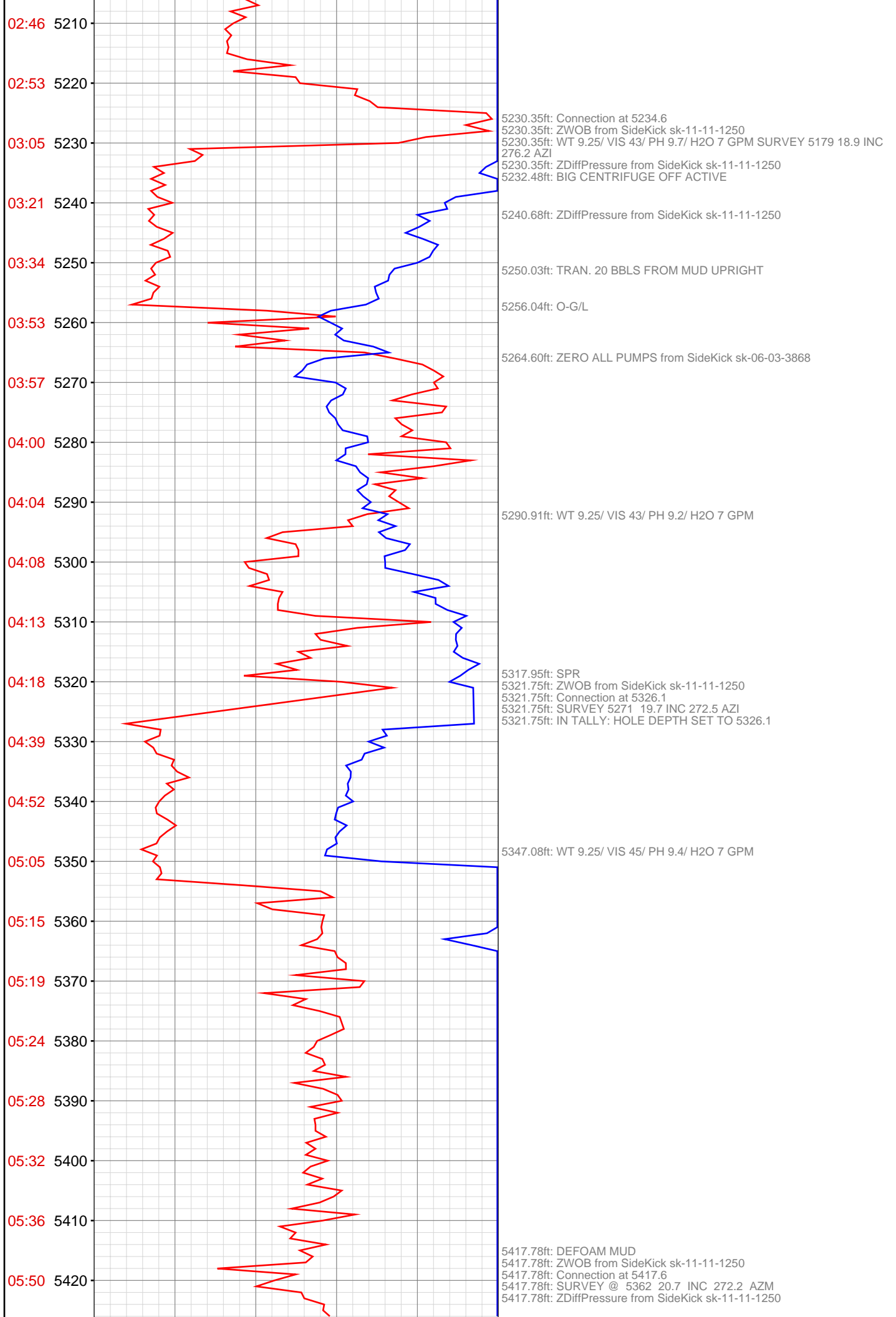
4753.18ft: WT 9.3/ VIS 44/ PH 9.6/ H2O 7 GPM

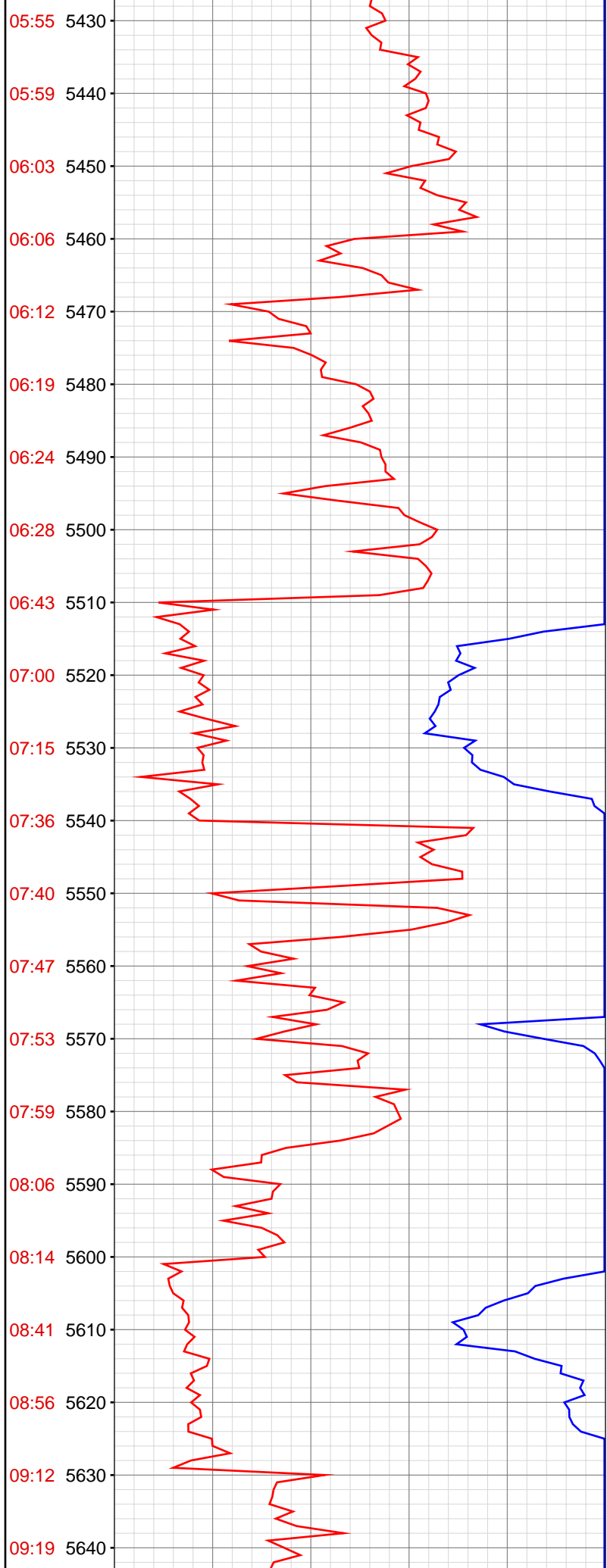
22:06 4770
22:24 4780
22:29 4790
22:33 4800
22:37 4810
22:44 4820
22:52 4830
22:58 4840
23:04 4850
23:09 4860
23:26 4870
23:33 4880
23:37 4890
23:40 4900
23:43 4910
23:47 4920
23:52 4930
23:57 4940
Dec 30 2012
00:00 4950
00:16 4960
00:25 4970
00:43 4980



4773.72ft: ZWOB from SideKick sk-11-11-1250
4773.72ft: Connection at 4685.0
4773.72ft: SURVEY 4721 21.1 INC 270.3 AZI
4773.72ft: ZDiffPressure from SideKick sk-11-11-1250
4773.72ft: Connection at 4776.7
4787.27ft: ZERO ALL PUMPS from SideKick sk-06-03-3868
4800.53ft: DEFOAM MUD
4810.53ft: TRAN. 10 BBLs FROM DEWATER
4842.78ft: WT 9.3/ VIS 44/ PH 9.6/ H2O 7 GPM
4865.12ft: Connection at 4868.1
4865.12ft: SURVEY 4813 20.7 INC 270.2 AZI
4865.12ft: ZDiffPressure from SideKick sk-11-11-1250
4875.46ft: ZERO ALL PUMPS from SideKick sk-06-03-3868
4948.36ft: WT 9.3/ VIS 44/ PH 9.6/ H2O 7 GPM
4956.27ft: SURVEY 4905 19.8 INC 271.4 AZI
4956.27ft: Connection at 4960.1
4956.27ft: SURVEY 4905 19.8 INC 271.4 AZI
4956.27ft: ZDiffPressure from SideKick sk-11-11-1250
4963.52ft: TRAN. 10 BBLs FROM DEWATER
4980.38ft: ZERO ALL PUMPS from SideKick sk-06-03-3868
4985.44ft: DEFOAM MUD







5446.00ft: PVT:Flow alarm reactivated: un-muted

5468.47ft: PUMPED 10BBLS SWEEP
5468.47ft: ZERO ALL PUMPS from SideKick sk-06-03-3868

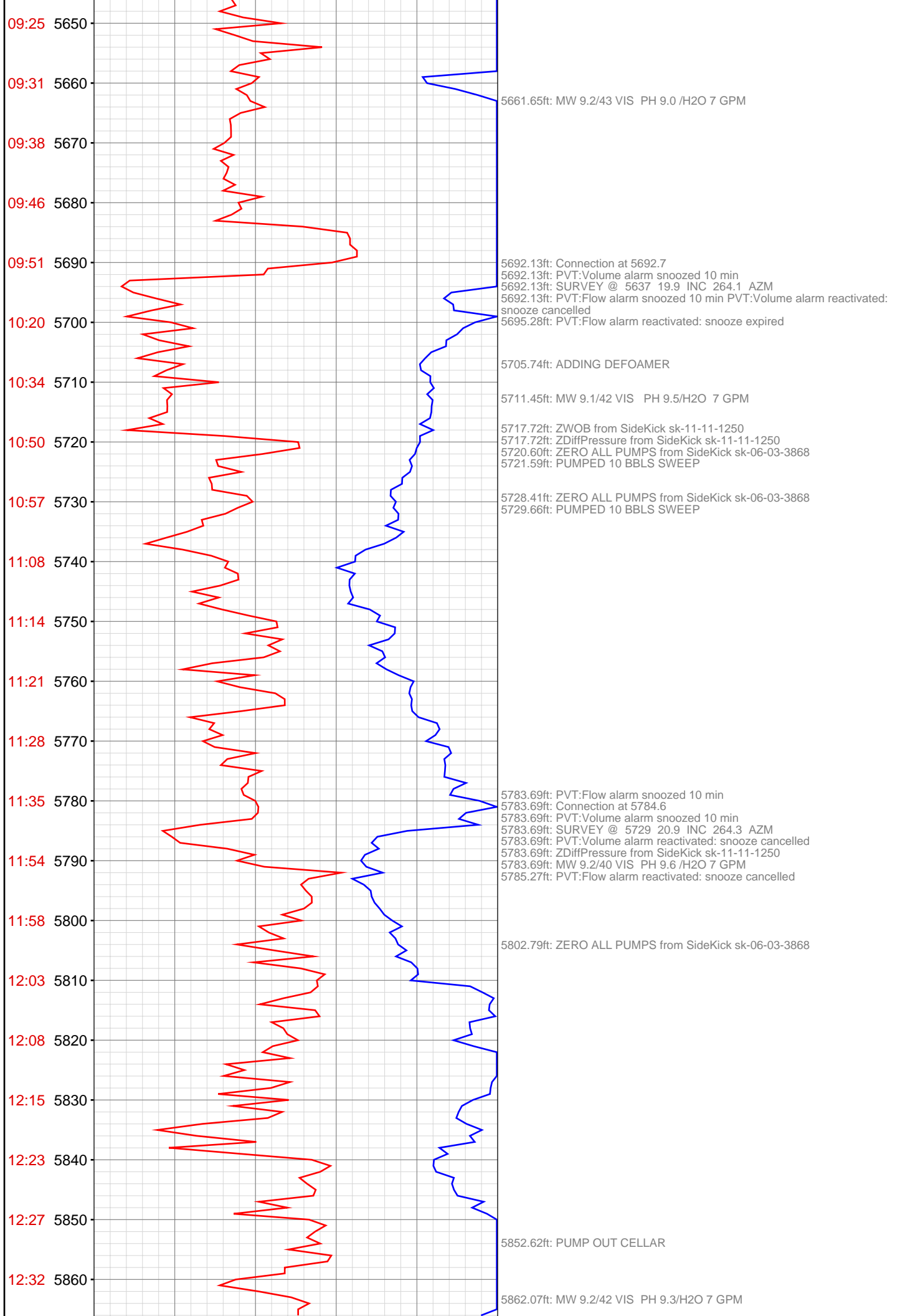
5486.52ft: MW 9.4/42 VIS /PH 9.6/ H2O 7 GPM

5509.12ft: Connection at 5509.2
5509.12ft: SURVEY @ 5454 19.9 INC 274.2 AZM
5509.12ft: PVT:Flow alarm snoozed 10 min
5513.58ft: PVT:Flow alarm reactivated: snooze expired

5532.05ft: MW 9.3/46 VIS PH 9./H2O 7 GPM

5539.07ft: ZWOB from SideKick sk-11-11-1250
5543.01ft: ZERO ALL PUMPS from SideKick sk-06-03-3868
5544.72ft: PUMPED 15 BBLS SWEEP

5600.62ft: Connection at 5601.2
5600.62ft: PVT:Volume alarm snoozed 10 min
5600.62ft: SURVEY @ 5546 18.6 INC 269.1 AZM
5600.62ft: PVT:Flow alarm snoozed 10 min
5600.62ft: ZDiffPressure from SideKick sk-11-11-1250
5600.98ft: PVT:Volume alarm reactivated: snooze expired
5604.23ft: MW 9*.25/44 VIS PH 9.4 /H2O 7 GPM
5605.18ft: PVT:Flow alarm reactivated: snooze expired



12:37 5870
12:54 5880
12:58 5890
13:01 5900
13:04 5910
13:08 5920
13:12 5930
13:17 5940
13:21 5950
13:26 5960
13:40 5970
13:45 5980
13:48 5990
13:52 6000
13:56 6010
14:01 6020
14:07 6030
14:12 6040
14:16 6050
14:36 6060
14:53 6070
15:17 6080



5875.07ft: Connection at 5876.4
5875.07ft: SURVEY @ 5821 19.9 INC 265.7 AZM
5875.07ft: PVT:Flow alarm snoozed 10 min
5875.07ft: ZDiffPressure from SideKick sk-11-11-1250
5875.07ft: ZWOB from SideKick sk-11-11-1250
5875.62ft: PVT:Flow alarm reactivated: snooze cancelled
5880.02ft: ZERO ALL PUMPS from SideKick sk-06-03-3868

5887.47ft: PUMPED 10 BBLS SWEEP

5966.57ft: Connection at 5967.7
5966.57ft: PVT:Flow alarm snoozed 10 min
5966.57ft: ZDiffPressure from SideKick sk-11-11-1250
5966.57ft: ZWOB from SideKick sk-11-11-1250
5971.78ft: SURVEY @ 5912 17.1 INC 265.2 AZM

5984.22ft: PVT:Flow alarm reactivated: snooze expired
5987.99ft: ZERO ALL PUMPS from SideKick sk-06-03-3868
5988.75ft: PUMPED 15 BBLS SWEEP

5999.05ft: MW 9.3/42 VIS PH 9.6/ H2O 2 GPM

6057.84ft: Connection at 6059.3
6057.84ft: SURVEY @ 6004 15.1 INC 266.2 AZM
6057.84ft: PVT:Flow alarm snoozed 10 min
6062.07ft: PVT:Flow alarm reactivated: snooze expired

6066.86ft: SUCKING UP H2O ON LOCATION INTO POSSUM BELLY
6072.05ft: MW 9.2+/ 43 VIS PH 9.4 /

6086.25ft: ZERO ALL PUMPS from SideKick sk-06-03-3868
6086.58ft: PUMPED 15 BBLS SWEEP

15:28 6090
15:32 6100
15:36 6110
15:41 6120
15:45 6130
15:51 6140
16:34 6150
16:41 6160
16:49 6170
16:58 6180
17:07 6190
17:16 6200
17:25 6210
17:30 6220
17:34 6230
17:49 6240
17:53 6250
17:58 6260
18:02 6270
18:09 6280
18:13 6290
18:18 6300

6148.88ft: PVT:Flow and volume alarm muted
6148.88ft: RIG SERVICE
6148.88ft: MW 9.3/44 VIS PH 9.2
6148.88ft: FUNCTIONED ANNULAR
6148.88ft: Connection at 6151.1
6148.88ft: ZWOB from SideKick sk-11-11-1250
6148.88ft: ZDiffPressure from SideKick sk-11-11-1250
6152.46ft: ZERO ALL PUMPS from SideKick sk-06-03-3868
6152.92ft: PUMPED 10 BBLS SWEEP

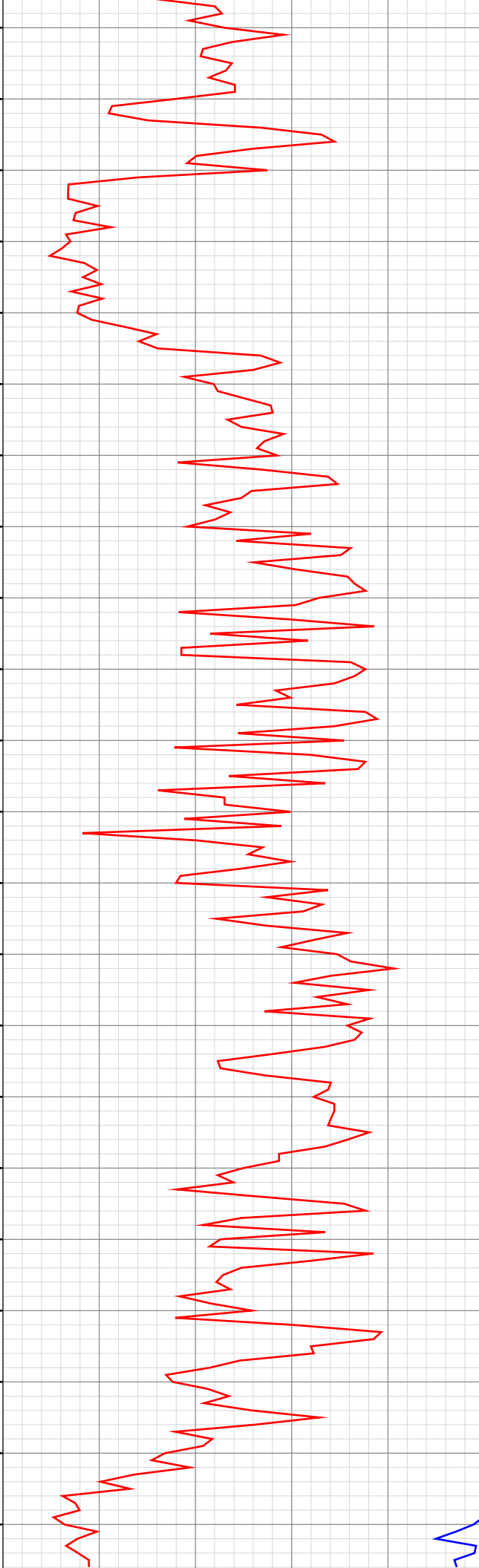
6198.69ft: MW 9.3/45 VIS PH 9.5 / H2O 3 GPM
6200.53ft: ZDiffPressure from SideKick sk-11-11-1250

6240.22ft: SURVEY 6187 14.1 INC 272.4 AZI Connection at 6242.7
6240.22ft: PVT:Flow and volume alarm reactivated: un-muted
6240.22ft: ZWOB from SideKick sk-11-11-1250
6240.22ft: ZDiffPressure from SideKick sk-11-11-1250
6243.04ft: ZERO ALL PUMPS from SideKick sk-06-03-3868 PUMPED 15 BBLS SWEEP

6283.24ft: DEFOAM MUD

6289.01ft: WT 9.3+/ VIS 43/ PH 9.6/ H2O 7 GPM

18:25 6310
18:30 6320
18:37 6330
19:04 6340
19:20 6350
19:29 6360
19:34 6370
19:39 6380
19:43 6390
19:47 6400
19:51 6410
19:56 6420
20:11 6430
20:15 6440
20:18 6450
20:22 6460
20:26 6470
20:31 6480
20:36 6490
20:41 6500
20:46 6510
21:09 6520



6331.69ft: ZWOB from SideKick sk-11-11-1250
6331.69ft: Connection at 6334.4
6331.69ft: SURVEY 6279 11.6 INC 273.4 AZI
6331.69ft: PVT:Flow alarm muted
6331.69ft: TRAN. 10 BBLs FROM MUD UPRIGHT
6337.73ft: WT 9.3+/ VIS 44/ PH 9.4/ H2O 7 GPM
6338.39ft: DEFOAM MUD

6348.33ft: TRAN. 10 BBLs FROM MUD UPRIGHT

6353.84ft: ZERO ALL PUMPS from SideKick sk-06-03-3868

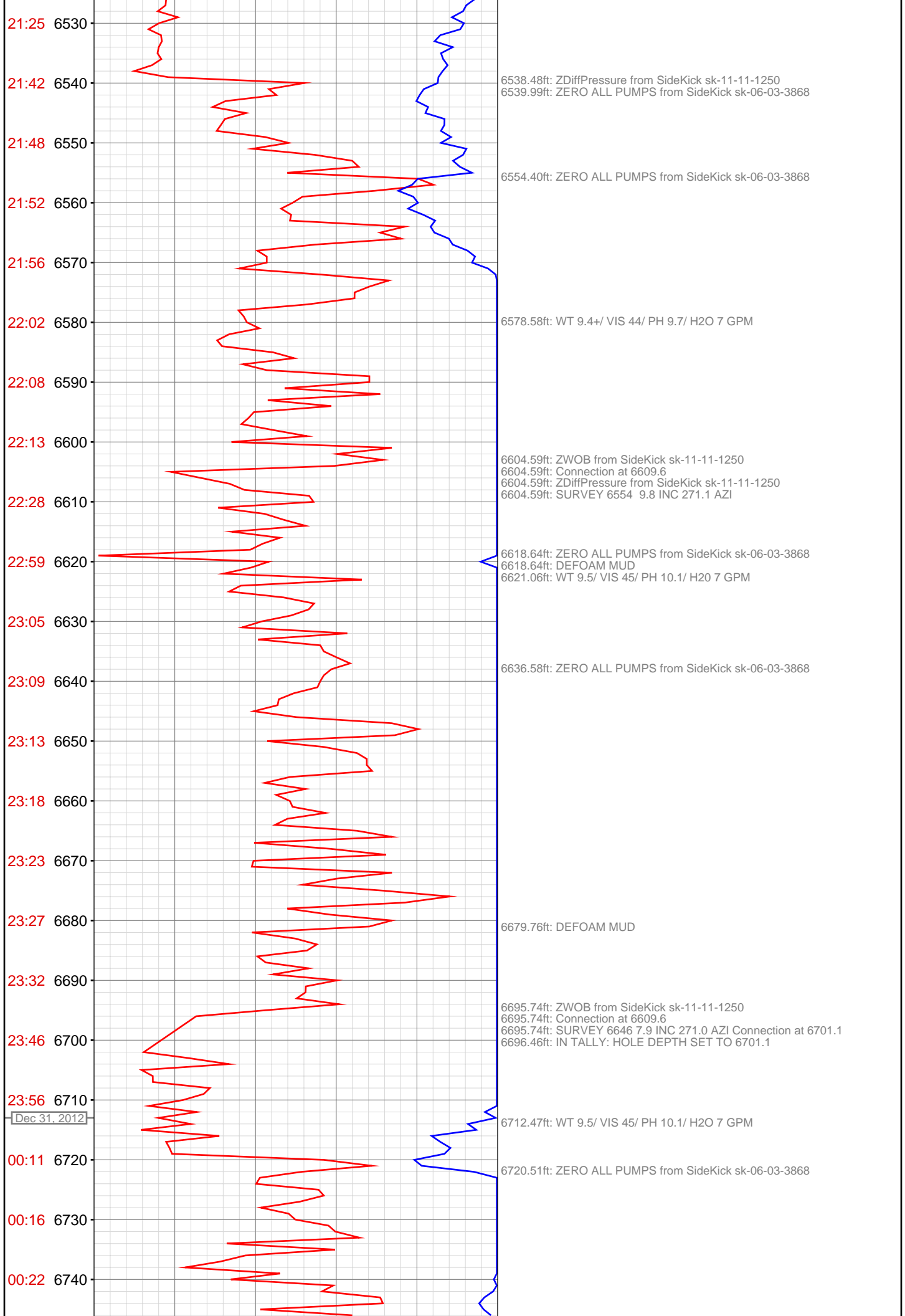
6422.41ft: Connection at 6426.3
6422.41ft: WT 9.3+/ VIS 42/ PH 9.7/ H2O 7 GPM
6422.41ft: SURVEY 6371 11.4 INC 274.0 AZI
6422.41ft: ZDiffPressure from SideKick sk-11-11-1250

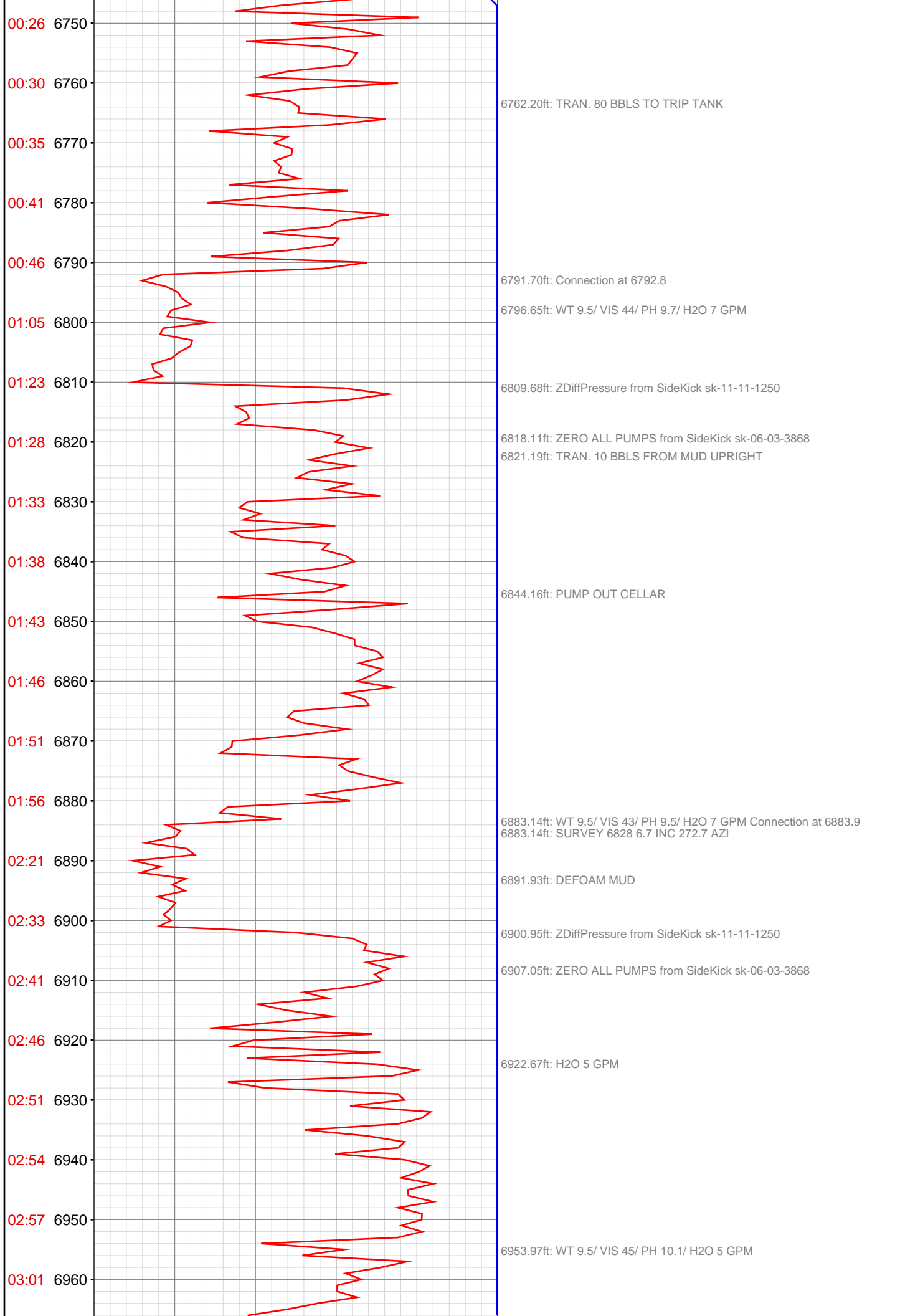
6431.76ft: TRAN. 10 BBLs FROM MUD UPRIGHT

6477.00ft: ZERO ALL PUMPS from SideKick sk-06-03-3868

6499.84ft: TRAN. 10 BBLs FROM MUD UPRIGHT

6513.68ft: ZWOB from SideKick sk-11-11-1250
6513.68ft: Connection at 6517.9
6513.68ft: SURVEY 6462 9.5 INC 277.2 AZI
6515.32ft: WT 9.4/ VIS 45/ PH 10.1/ H2O 7 GPM





03:05 6970
03:23 6980
03:36 6990
03:44 7000
03:49 7010
03:52 7020
03:56 7030
04:00 7040
04:04 7050
04:09 7060
04:26 7070
04:32 7080
04:35 7090
04:39 7100
04:44 7110
04:49 7120
04:54 7130
04:58 7140
05:03 7150
05:18 7160
05:24 7170
05:31 7180

6974.74ft: Connection at 6975.3
6974.74ft: SURVEY 6920 6.7 INC 275.0 AZI

6985.63ft: H2O 2 GPM

6992.19ft: ZDiffPressure from SideKick sk-11-11-1250
6993.31ft: ZERO ALL PUMPS from SideKick sk-06-03-3868

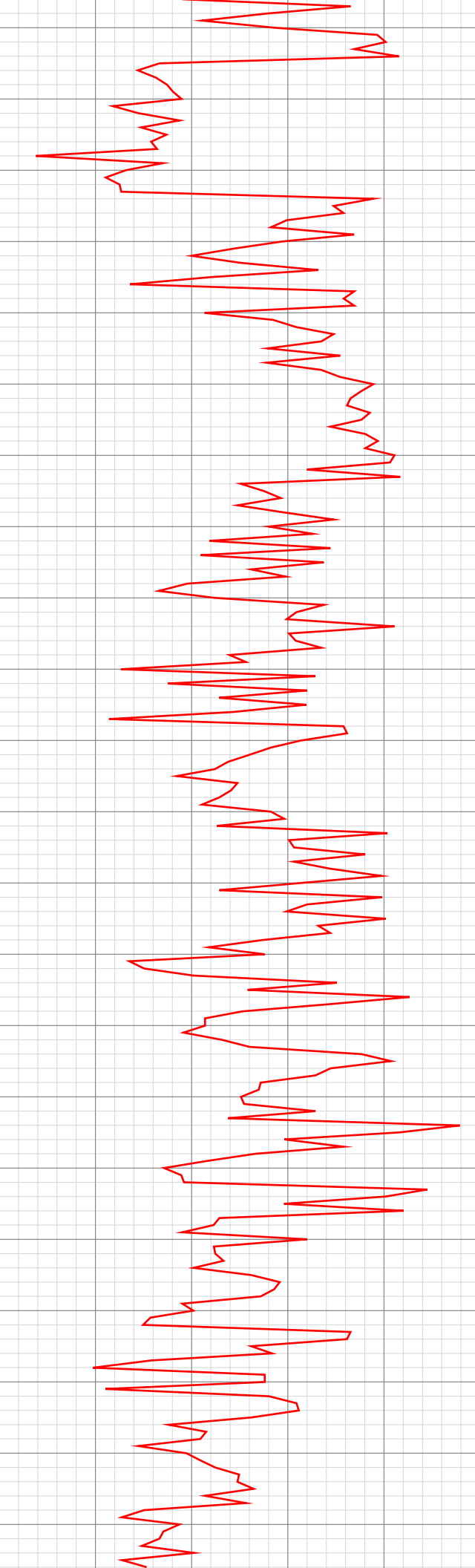
7037.30ft: DEFOAM MUD
7039.96ft: WT 9.5/ VIS 44/ PH 9.7/ H2O 2 GPM

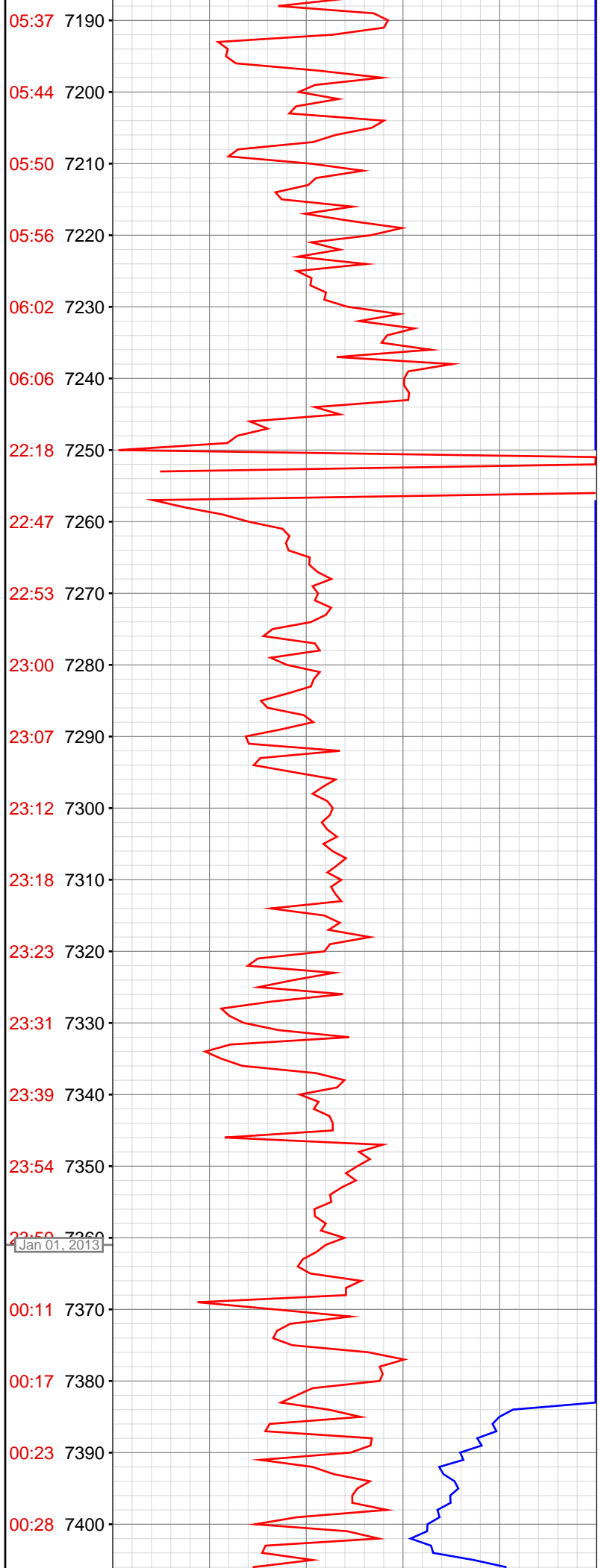
7066.08ft: S-P-R
7066.08ft: Connection at 7066.6
7066.08ft: ZDiffPressure from SideKick sk-11-11-1250
7066.08ft: SURVEY 7011 7.6 INC 207.2 AZI

7093.64ft: ZERO ALL PUMPS from SideKick sk-06-03-3868

7141.86ft: WT 9.5/ VIS 44/ PH 9.4/ H2O 2 GPM

7157.48ft: ZWOB from SideKick sk-11-11-1250
7157.48ft: Connection at 7158.0
7157.48ft: SURVEY 7102 6.1 INC 272.8 AZI
7157.48ft: ZDiffPressure from SideKick sk-11-11-1250
7162.34ft: ZERO ALL PUMPS from SideKick sk-06-03-3868





7249.28ft: SENT 20 BBLs SWEEP
7249.28ft: ZERO ALL PUMPS from SideKick sk-06-03-3868
7249.28ft: MW 9.5/ 42 VIS/ PH 9.7/ H2O 2 GPM
7249.28ft: FLOW CHECK
7249.28ft: ZERO ALL PUMPS from SideKick sk-06-03-3868
7249.28ft: MW 9.5/ 41 VIS PH 9.7/
7249.28ft: FLOW CHECK
7249.28ft: MW 9.5/43 VIS PH 9.6/
7249.28ft: PULL ROT HEAD
7249.28ft: MW 9.55/45 VIS PH 9.6/
7249.28ft: PVT:Volume alarm muted
7249.28ft: MW 9.6/46 VIS PH 9.6
7249.28ft: PVT Horn Disabled
7249.28ft: MW 9.6+/46 VIS PH 9.6
7249.28ft: MW 9.8 /45 VIS PH 10.1
7249.28ft: MW 9.5+/45 VIS /PH 10.2
7249.28ft: ZERO ALL PUMPS from SideKick sk-06-03-3868
7249.28ft: PUMPED 10 BBLs SWEEP
7249.28ft: ZERO ALL PUMPS from SideKick sk-06-03-3868
7249.28ft: PUMPED 10 BBLs SWEEP
7249.28ft: MW 9.7/46 VIS / PH 9.6
7249.28ft: SMALL CENTRIFUGE IS ON ACTIVE
7249.28ft: MW ON UP-RIGHT IS 9.8
7249.28ft: TRANSFERING 100 BBLs FROM UP-RIGHT
7249.28ft: ZERO ALL PUMPS from SideKick sk-06-03-3868
7249.28ft: MW 9.7/45 VIS PH 9.4
7249.28ft: ZERO ALL PUMPS from SideKick sk-11-11-1250
7249.28ft: DONE TRANSFER
7249.28ft: SMALL CENTRIFUGE OFF ACTIVE
7249.28ft: WT 9.7/ VIS 45/ PH 9.8
7249.28ft: ZDIFF from DHC
7249.28ft: WT 9.7/ VIS 45/ PH 9.6
7249.28ft: ZERO ALL PUMPS from SideKick sk-06-03-3868
7249.28ft: ZERO ALL PUMPS from SideKick sk-11-11-1250
7249.28ft: ZDIFF from DHC
7249.28ft: ZERO ALL PUMPS from SideKick sk-06-03-3868
7249.28ft: WT 9.7/ VIS 45/ PH 9.2
7249.28ft: ZERO ALL PUMPS from SideKick sk-06-03-3868
7249.28ft: WT 9.7/ VIS 44/ PH 9.1
7249.28ft: WT 9.7/ VIS 44/ PH 9.0
7256.27ft: BIT DEPTH CHANGED TO 7164.0 FEET
7256.27ft: ZWOB from SideKick sk-11-11-1250
7256.27ft: ZDiffPressure from SideKick sk-11-11-1250
7256.27ft: ZWOB from SideKick sk-11-11-1250
7256.27ft: Connection at 7256.4
7256.53ft: PVT Horn Enabled
7274.44ft: ZERO ALL PUMPS from SideKick sk-06-03-3868
7278.94ft: WT 9.7/ VIS 45/ PH 9.0/ H2O 2 GPM
7282.25ft: DEFOAM MUD

7298.62ft: TRAN. 10 BBLs FROM MUD UPRIGHT

7345.41ft: ZWOB from SideKick sk-11-11-1250
7345.41ft: Connection at 7347.9
7345.41ft: SURVEY 7292 3.3 INC 270.6 AZI
7345.41ft: ZDiffPressure from SideKick sk-11-11-1250

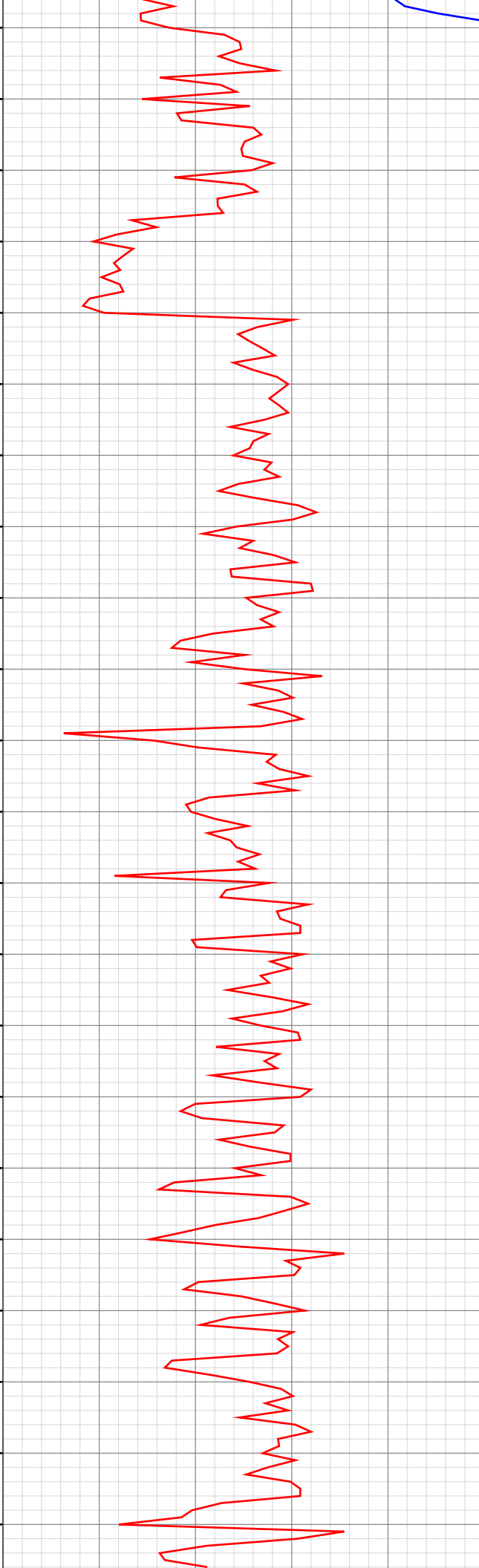
7358.14ft: WT 9.7/ VIS 44/ PH 9.0/ H2O 2 GPM

7368.31ft: ZWOB from SideKick sk-11-11-1250

7374.02ft: ZERO ALL PUMPS from SideKick sk-06-03-3868

22:50 7260
Jan 01, 2013

00:35 7410
00:40 7420
00:46 7430
01:04 7440
01:17 7450
01:22 7460
01:26 7470
01:31 7480
01:36 7490
01:40 7500
01:47 7510
01:51 7520
02:07 7530
02:11 7540
02:15 7550
02:20 7560
02:25 7570
02:31 7580
02:35 7590
02:40 7600
02:44 7610
03:00 7620



7436.58ft: Connection at 7439.8
7436.58ft: ZDiffPressure from SideKick sk-11-11-1250
7436.58ft: SURVEY 7384 2.6 INC 273.2 AZI

7449.28ft: ZDiffPressure from SideKick sk-11-11-1250

7464.47ft: ZERO ALL PUMPS from SideKick sk-06-03-3868

7528.08ft: ZWOB from SideKick sk-11-11-1250
7528.08ft: ZWOB from SideKick sk-11-11-1250
7528.08ft: WT 9.7/ VIS44/ PH 9.1/ H2O 5 GPM
7528.08ft: Connection at 7531.4
7528.08ft: SURVEY 7476 1.5 INC 311.2 AZI
7528.08ft: ZDiffPressure from SideKick sk-11-11-1250
7534.91ft: TRAN. 10 BBLS FROM MUD UPRIGHT

7585.63ft: H2O 7 GPM
7587.24ft: DEFOAM MUD

7613.35ft: TRAN. 10 BBLS FROM MUD UPRIGHT
7619.36ft: Connection at 7623.0
7619.36ft: ZDiffPressure from SideKick sk-11-11-1250
7619.36ft: SURVEY 7568 1.1 INC 332.3 AZI
7619.36ft: WT 9.7/ VIS 44/ PH 9.5/ H2O 7 GPM

03:06 7630
03:10 7640
03:15 7650
03:20 7660
03:25 7670
03:30 7680
03:34 7690
03:39 7700
03:44 7710
04:04 7720
04:15 7730
04:24 7740
04:28 7750
04:33 7760
04:37 7770
04:43 7780
04:48 7790
04:52 7800
05:07 7810
05:11 7820
05:16 7830
05:21 7840

7637.99ft: ZERO ALL PUMPS from SideKick sk-06-03-3868

7696.26ft: DEFOAM MUD

7710.63ft: S-P-R
7710.63ft: Connection at 7714.6
7710.63ft: SURVEY 7659 1.2 INC 23.9 AZI
7710.63ft: ZDiffPressure from SideKick sk-11-11-1250
7711.38ft: IN TALLY: HOLE DEPTH SET TO 7714.6
7717.45ft: WT 9.75/ VIS 44/ PH 9.8/ H2O 7 GPM
7718.27ft: SMALL CENTRIFUGE ON ACTIVE

7724.74ft: TRAN. 10 BBLS FROM MUD UPRIGHT

7733.89ft: ZDiffPressure from SideKick sk-11-11-1250

7743.67ft: ZERO ALL PUMPS from SideKick sk-06-03-3868

7754.82ft: WT 9.7 SMALL CENRIFUGE OFF ACTIVE

7804.79ft: Connection at 7806.5
7804.79ft: WT 9.7/ VIS 45/ PH 9.5/ H2O 7 GPM
7804.79ft: ZDiffPressure from SideKick sk-11-11-1250
7804.79ft: SURVEY 7751 0.3 INC 108.3 AZI

05:25 7850
05:29 7860
05:33 7870
05:38 7880
05:43 7890
05:57 7900
06:01 7910
06:05 7920
06:11 7930
06:15 7940
06:19 7950
06:23 7960
06:27 7970
06:33 7980
06:50 7990
06:53 8000
06:59 8010
07:03 8020
07:08 8030
07:13 8040
07:17 8050
07:23 8060



7896.13ft: ZWOB from SideKick sk-11-11-1250
7896.13ft: Connection at 7898.3
7896.13ft: SURVEY @ 7843 .6 INC 103.2 AZM

7957.12ft: MW 9.7+/ 45 VIS / PH 9.9/ H2O 8 GPM

7987.40ft: SURVEY @ 7935 1.1 INC 100.0 AZM
7987.40ft: Connection at 7990.2
7987.40ft: ZDiffPressure from SideKick sk-11-11-1250
7987.40ft: ZWOB from SideKick sk-11-11-1250
7993.18ft: PUMPED 15 BBLs SQWEEP
7993.18ft: ZERO ALL PUMPS from SideKick sk-06-03-3868

7999.97ft: PVT:Flow and volume alarm reactivated: un-muted

8063.85ft: MW-9.7+/43 VIS PH-9.8/H2O 8GPM

07:30 8070
07:47 8080
07:57 8090
08:09 8100
08:25 8110
08:29 8120
08:36 8130
08:41 8140
08:45 8150
08:49 8160
08:53 8170
09:08 8180
09:13 8190
09:17 8200
09:23 8210
09:28 8220
09:34 8230
09:38 8240
09:43 8250
09:47 8260
10:07 8270
10:17 8280



8078.84ft: Connection at 8081.9
8078.84ft: SURVEY @ 8026 1.9 INC 87.4 AZM
8078.84ft: PVT:Flow alarm snoozed 10 min
8078.84ft: ZDiffPressure from SideKick sk-11-11-1250
8078.84ft: IN TALLY: HOLE DEPTH SET TO 8081.9

8089.37ft: PVT:Flow alarm reactivated: snooze expired

8115.22ft: ZERO ALL PUMPS from SideKick sk-06-03-3868
8116.54ft: PUMPED 20BBLS SWEEP

8125.85ft: MW-9.7/ 44 VIS/ PH-9.4/ H2O-8 GPM

8173.16ft: Connection at 8173.6
8173.16ft: SURVEY @ 8118 .8 INC 85.0 AZM
8173.16ft: PVT:Flow alarm snoozed 10 min
8173.16ft: ZDiffPressure from SideKick sk-11-11-1250

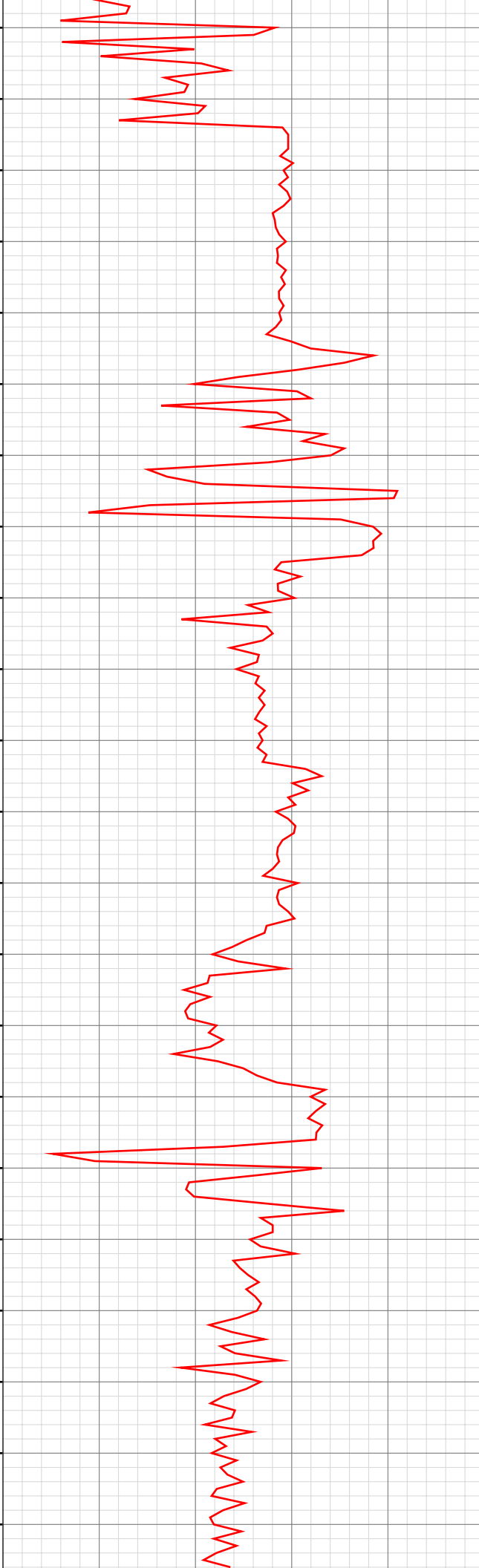
8190.32ft: SENDED 20 BBLS SWEEP
8190.65ft: ZERO ALL PUMPS from SideKick sk-06-03-3868
8193.11ft: PVT:Flow alarm reactivated: snooze expired

8222.67ft: ADDED OPEN BUCKET OF ESF-13

8233.56ft: MW-9.7 VIS-46 PH-10.3 H2O-8 GPM

8264.60ft: Connection at 8264.8
8264.60ft: SURVEY @ 8209 1.7 INC 78.7 AZM
8264.60ft: PVT:Flow alarm snoozed 10 min
8264.60ft: ZDiffPressure from SideKick sk-11-11-1250
8264.60ft: PVT:Flow alarm reactivated: snooze cancelled PVT:Volume alarm snoozed 10 min
8268.47ft: PVT:Volume alarm reactivated: snooze expired

10:28 8290
10:35 8300
10:49 8310
10:53 8320
10:58 8330
11:02 8340
11:06 8350
11:21 8360
11:24 8370
11:30 8380
11:34 8390
11:38 8400
11:42 8410
11:46 8420
11:53 8430
11:57 8440
12:14 8450
12:19 8460
12:23 8470
12:29 8480
12:34 8490
12:39 8500



8303.22ft: MW 9.8/46 VIS PH 10.0 /H2O 8 GPM
8306.46ft: ZERO ALL PUMPS from SideKick sk-06-03-3868
8308.10ft: PUMPED 20 BBLS SWEEP

8356.10ft: Connection at 8356.4
8356.10ft: PVT:Volume alarm snoozed 10 min
8356.10ft: PVT:Flow alarm snoozed 10 min
8356.10ft: ZWOB from SideKick sk-11-11-1250
8356.10ft: ZDiffPressure from SideKick sk-11-11-1250
8359.15ft: PUMPED 20 BBLS SWEEP
8360.01ft: ZERO ALL PUMPS from SideKick sk-06-03-3868

8370.41ft: PVT:Volume alarm reactivated: snooze expired
8372.70ft: PVT:Flow alarm reactivated: snooze expired

8422.38ft: MW 9.8/44 VIS PH 9.6/ H2O 7 GPM

8447.18ft: Connection at 8448.1
8447.18ft: SURVEY @ 8303 1.78 INC 3.9 AZM
8447.18ft: PVT:Flow alarm snoozed 10 min
8447.18ft: ZDiffPressure from SideKick sk-11-11-1250
8452.92ft: PUMPED 15 BBLS SWEEP
8453.74ft: ZERO ALL PUMPS from SideKick sk-06-03-3868

8463.62ft: PVT:Flow alarm reactivated: snooze expired

8495.74ft: MW 9.8+ IN/ OUT 9.7+/ 44 VIS PH 9.6/H2O 7GPM

12:44 8510
12:50 8520
12:56 8530
13:24 8540
13:28 8550
13:34 8560
13:40 8570
13:45 8580
13:49 8590
13:53 8600
13:56 8610
14:00 8620
14:20 8630
14:31 8640
14:36 8650
14:47 8660
15:05 8670
15:10 8680
15:15 8690
15:20 8700
15:26 8710
15:32 8720

8539.30ft: CIRCULATE GASSES
8539.30ft: Connection at 8539.6
8539.30ft: SURVEY @ 8484 1.7 INC 16.7 AZM
8539.30ft: PVT:Flow alarm snoozed 10 min
8539.30ft: ZDiffPressure from SideKick sk-11-11-1250
8539.30ft: ZWOB from SideKick sk-11-11-1250
8543.01ft: ZERO ALL PUMPS from SideKick sk-06-03-3868
8547.97ft: PUMPED 20 BBLs SWEEP
8552.40ft: MW 9.8+/ 45 VIS PH 9.4/ H2O 7 GPM
8555.15ft: PVT:Flow alarm reactivated: snooze expired

8630.81ft: Connection at 8631.4
8630.81ft: SURVEY @ 8576 2.2 INCV 56.8 AZM
8630.81ft: PVT:Flow and volume alarm snoozed 10 min
8630.81ft: ZDiffPressure from SideKick sk-11-11-1250
8638.52ft: PVT:Flow and volume alarm reactivated: snooze expired

8653.97ft: MW 9.8++ /45 VIS PH 10.3/ H2O 8 GPM

8667.32ft: PUMPED 20 BBLs SWEEP
8667.32ft: ZERO ALL PUMPS from SideKick sk-06-03-3868

8702.13ft: PVT:Volume alarm muted

8722.24ft: MW 9.8/ 44 VIS PH 9.9/ H2O 8 GPM.
8722.24ft: TRNSFERING 60 BBLs F/ UP-RIGHT TO ACTIVE
8722.24ft: Connection at 8723.1
8722.24ft: PVT:Flow alarm snoozed 10 min
8722.24ft: ZDiffPressure from SideKick sk-11-11-1250

8723.23ft: PVT:Flow alarm reactivated: snooze cancelled PVT:Volume alarm reactivated: un-muted
8725.39ft: ZERO ALL PUMPS from SideKick sk-06-03-3868
8725.82ft: PUMPED 15 BBLs SWEEP

8813.78ft: SURVEY 8759 3.3 INC 56.5 AZI
8813.78ft: Connection at 8814.8
8813.78ft: SURVEY @ 8759 3.3 INC 56.5 AZM
8813.78ft: PVT:Flow alarm snoozed 10 min
8813.91ft: MW 9.8+/44 VIS PH 9.6/ H2O 8 GPM
8813.91ft: ZDiffPressure from SideKick sk-11-11-1250
8820.87ft: PVT:Flow alarm reactivated: snooze expired

8851.74ft: ADDING DEFOAMER

8861.61ft: MW 9.8+/ 46 VIS PH 9.6/ H2O 8 GPM

8873.59ft: PVT:Volume alarm snoozed 10 min
8875.98ft: PVT:Volume alarm reactivated: un-muted

8897.83ft: WT 9.8+/ VIS 44/ PH 9.4/ H2O 8 GPM
8901.38ft: DEFOAM MUD
8904.76ft: ZWOB from SideKick sk-11-11-1250
8904.76ft: Connection at 8906.8
8904.76ft: ZERO ALL PUMPS from SideKick sk-06-03-3868
8904.76ft: PVT:Flow alarm muted
8904.76ft: ZDiffPressure from SideKick sk-11-11-1250
8904.76ft: SURVEY 8851 2.3 INC 116.6 AZI
8907.05ft: TRANS 88 BBLs T/ TRIP TANK

8941.93ft: PVT:Volume alarm muted

15:49 8730
15:55 8740
16:01 8750
16:06 8760
16:12 8770
16:17 8780
16:22 8790
16:25 8800
16:28 8810
16:45 8820
16:58 8830
17:15 8840
17:24 8850
17:38 8860
17:47 8870
17:58 8880
18:03 8890
18:09 8900
18:29 8910
18:35 8920
18:42 8930
18:48 8940



