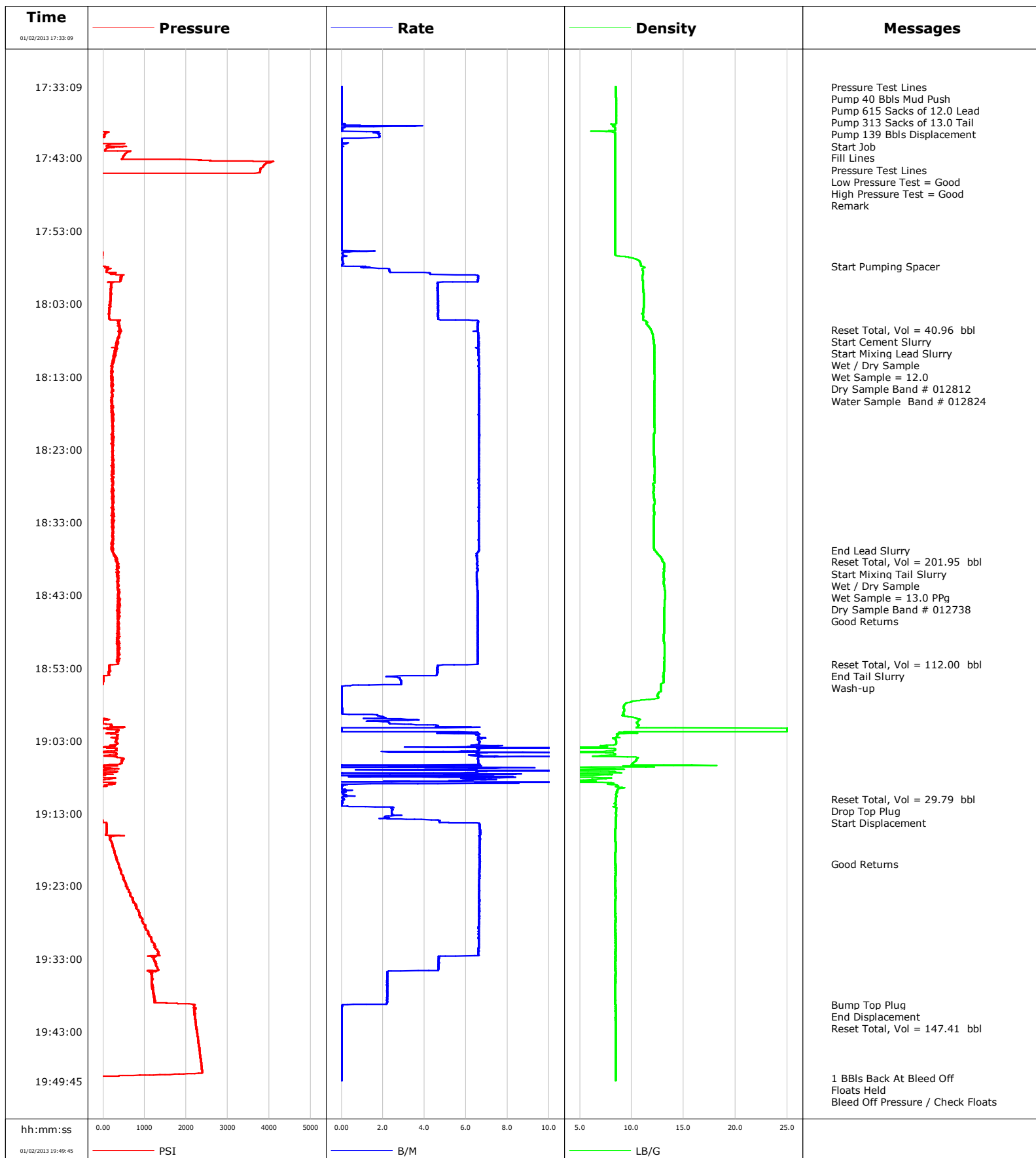


Well SHIDELER FEE 31-13CC
Field Mamm Creek
Engineer ROGERS / MORROW
Country United States

Client Encana
SIR No. C459-00979
Job Type 4 1/2 Production
Job Date 01-02-2013

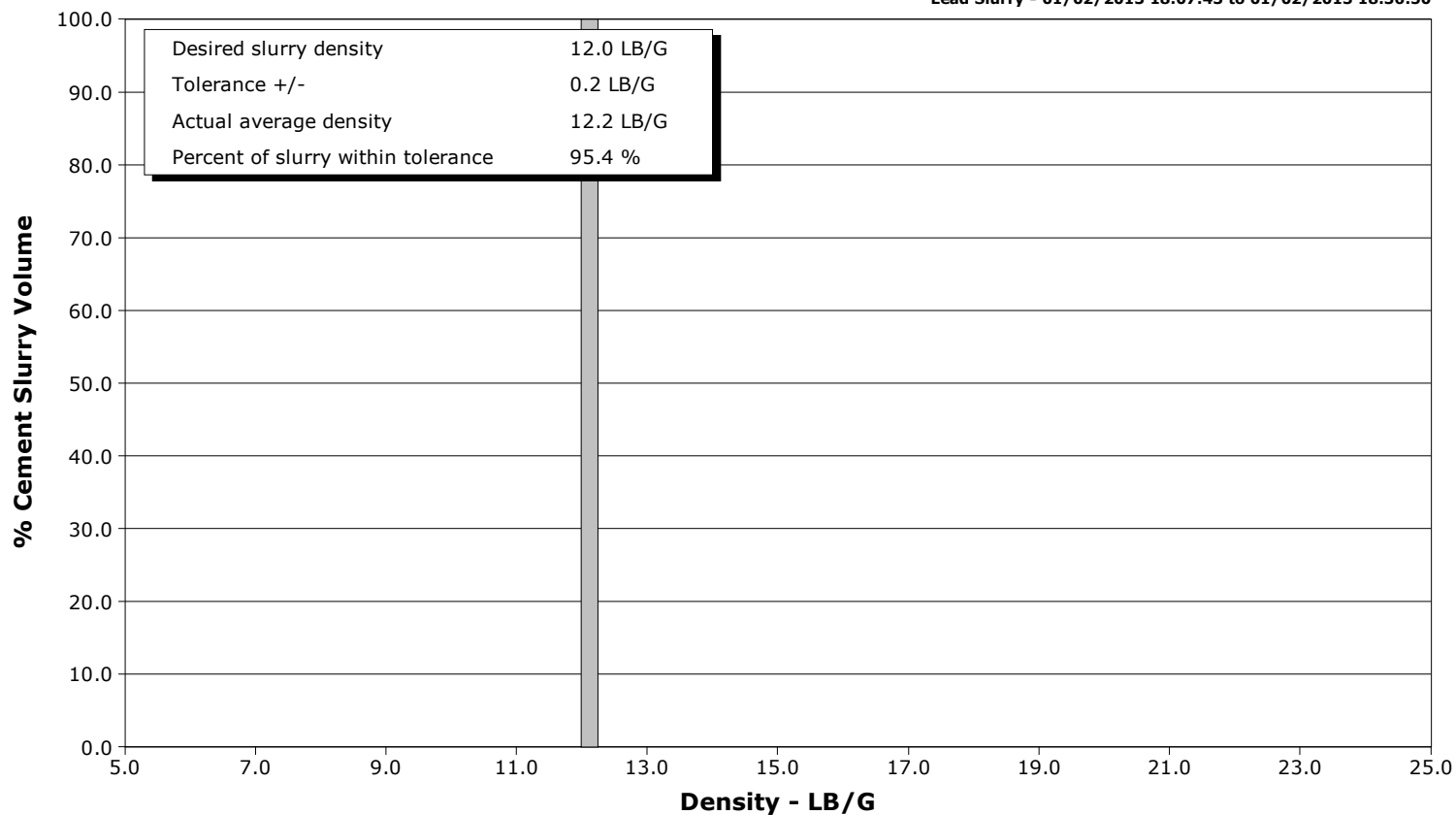


Schlumberger Cementing Qa/Qc Density Report

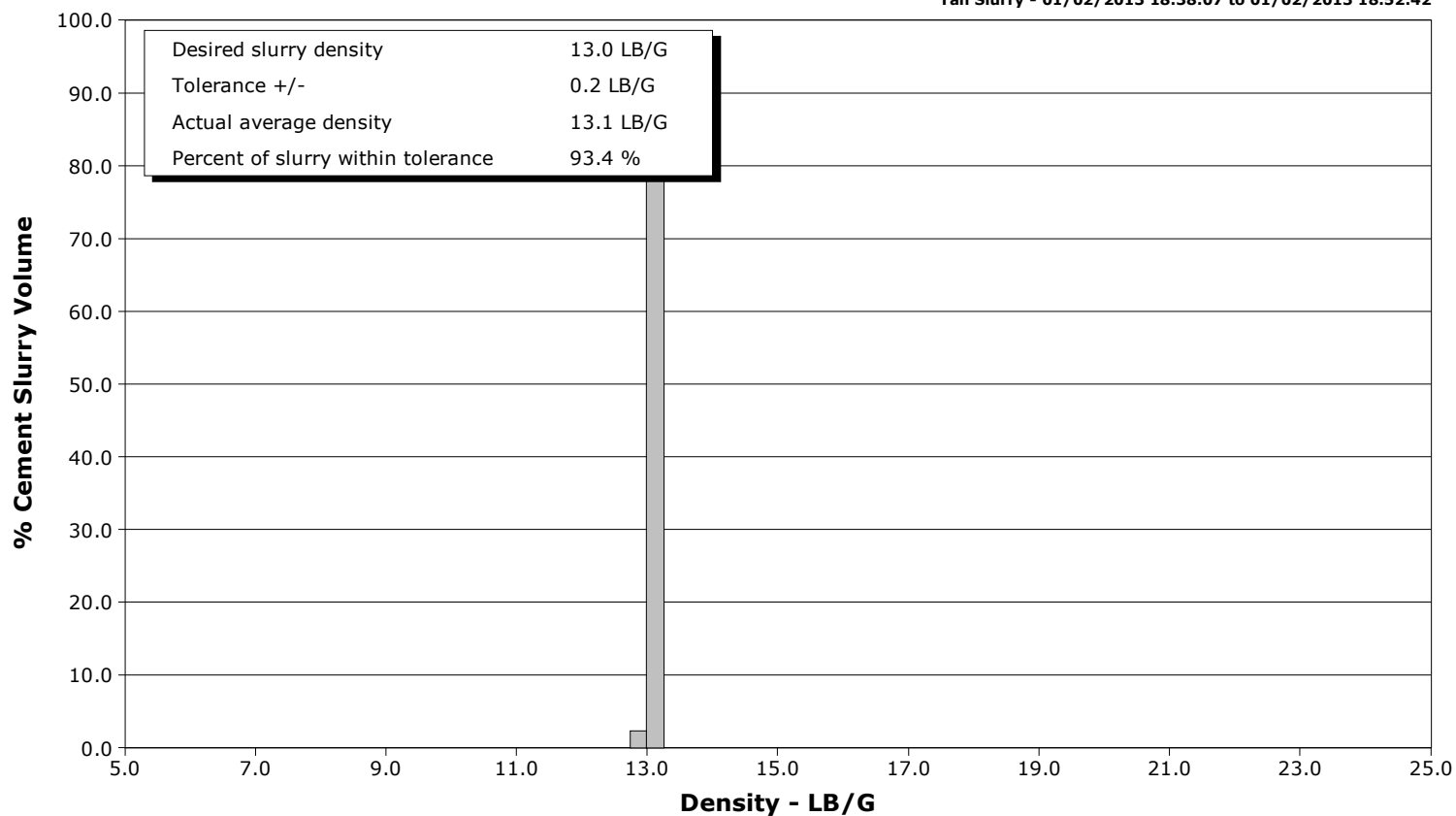
Well SHIDELER FEE 31-13CC
Field Mamm Creek
Engineer ROGERS / MORROW
Country United States

Client Encana
SIR No. C459-00979
Job Type 4 1/2 Production
Job Date 01-02-2013

Lead Slurry - 01/02/2013 18:07:43 to 01/02/2013 18:36:50



Tail Slurry - 01/02/2013 18:38:07 to 01/02/2013 18:52:42





Cementing Service Report

				Customer Encana		Job Number C459-00979			
Well SHIDELER FEE 31-13CC			Location (legal) 031E		Schlumberger Location Grand Junction, CO.		Job Start Jan/02/2013		
Field Mamm Creek		Formation Name/Type Dirty-Sandstone		Deviation	Bit Size	Well MD		Well TVD	
County Garfield		State/Province Colorado		BHP	BHST 230 degF	BHCT 186 degF	Pore Press. Gradient		
Well Master 12169343		API/UWI 0504521744							
Rig Name Patterson 303	Drilled For Gas	Service Via Land	Casing/Liner						
			Depth, ft	Size, in	Weight, lb/ft	Grade	Thread		
Offshore Zone	Well Class New	Well Type Development	8998.0	4.500	11.6	N-55	BUTT		
			0.0	0.000	0.0				
Drilling Fluid Type Bentonite		Max. Density	Plastic Viscosity	Tubing/Drill Pipe					
				Depth,	Size,	Weight,	Grade	Thread	
Service Line Cementing	Job Type 4 1/2 Production								
Max. Allowed Tub. Press	Max. Allowed Ann. Press	WH Connection Single Cement head	Perforations/Open Hole						
			Top,	Bottom,		No. of Shots	Total Interval		
Service Instructions							Diameter		
			Treat Down Casing	Displacement	Packer Type	Packer Depth			
			Tubing Vol.	Casing Vol.	Annular Vol.	Openhole Vol.			
Casing/Tubing Secured <input checked="" type="checkbox"/>			1 Hole Vol. Circulated prior to Cement <input checked="" type="checkbox"/>			Casing Tools		Squeeze Job	
Lift Pressure			Shoe Type Float			Squeeze Type			
Pipe Rotated <input type="checkbox"/>			Pipe Reciprocated <input type="checkbox"/>			Shoe Depth 8998.0 ft			
Tool Type									
No. Centralizers		Top Plugs 1	Bottom Plugs 0	Stage Tool Type		Tool Depth			
Cement Head Type Single			Stage Tool Depth			Tail Pipe Size			
Job Scheduled For Jan/02/2013		Arrived on Location Jan/02/2013	Leave Location Jan/02/2013	Collar Type Float		Tail Pipe Depth			
				Collar Depth 8955.0 ft		Sqz. Total Vol.			
Date	Time 24-hr clock	Treating Pressure PSI	Flow Rate B/M	Density LB/G	Volume BBL	Message			
01/02/2013	16:37:39					Started Acquisition			
01/02/2013	17:33:09	-143	0.0	8.46	0.0				
01/02/2013	17:33:12					Pressure Test Lines			
01/02/2013	17:33:12	-142	0.0	8.46	0.0				
01/02/2013	17:33:14					Pump 40 Bbls Mud Push			
01/02/2013	17:33:14					Pump 615 Sacks of 12.0 Lead			
01/02/2013	17:33:14	-143	0.0	8.46	0.0				
01/02/2013	17:33:15					Pump 313 Sacks of 13.0 Tail			
01/02/2013	17:33:15	-143	0.0	8.46	0.0				
01/02/2013	17:33:16					Pump 139 Bbls Displacement			
01/02/2013	17:33:16	-143	0.0	8.46	0.0				
01/02/2013	17:33:29					Start Job			
01/02/2013	17:33:29	-143	0.0	8.47	0.0				
01/02/2013	17:33:48					Fill Lines			
01/02/2013	17:33:48	-143	0.0	8.47	0.0				
01/02/2013	17:33:51					Pressure Test Lines			
01/02/2013	17:33:51	-143	0.0	8.47	0.0				
01/02/2013	17:33:54					Low Pressure Test = Good			
01/02/2013	17:33:54					High Pressure Test = Good			
01/02/2013	17:33:54	-142	0.0	8.47	0.0				
01/02/2013	17:33:55					Remark			

Well			Field	Job Start	Customer	Job Number
SHIDELER FEE 31-13CC			Mamm Creek	Jan/02/2013	Encana	C459-00979
Date	Time 24-hr clock	Treating Pressure PSI	Flow Rate B/M	Density LB/G	Volume BBL	Message
01/02/2013	17:37:39	-142	0.0	8.49	0.0	
01/02/2013	17:42:39	506	0.0	8.42	2.1	
01/02/2013	17:47:39	-94	0.0	8.42	2.2	
01/02/2013	17:52:39	-93	0.0	8.42	2.3	
01/02/2013	17:57:39	-34	0.0	10.88	2.6	
01/02/2013	17:57:55					Start Pumping Spacer
01/02/2013	17:57:55	60	1.2	11.13	2.6	
01/02/2013	18:02:39	184	4.6	11.17	24.2	
01/02/2013	18:06:34					Reset Total, Vol = 40.96 bbl
01/02/2013	18:06:34	407	6.5	11.84	45.0	
01/02/2013	18:07:08					Start Cement Slurry
01/02/2013	18:07:08	393	6.6	12.00	48.7	
01/02/2013	18:07:39	392	6.6	12.06	52.1	
01/02/2013	18:07:43					Start Mixing Lead Slurry
01/02/2013	18:07:43	393	6.6	12.07	52.5	
01/02/2013	18:08:41					Wet / Dry Sample
01/02/2013	18:08:41	306	6.6	12.15	58.9	
01/02/2013	18:08:42					Wet Sample = 12.0
01/02/2013	18:08:42	302	6.6	12.15	59.0	
01/02/2013	18:08:43					Dry Sample Band # 012812
01/02/2013	18:08:43					Water Sample Band # 012824
01/02/2013	18:08:43	302	6.6	12.15	59.1	
01/02/2013	18:12:39	220	6.6	12.19	85.1	
01/02/2013	18:17:39	223	6.6	12.17	118.2	
01/02/2013	18:22:39	219	6.6	12.14	151.3	
01/02/2013	18:27:39	239	6.6	12.18	184.4	
01/02/2013	18:32:39	221	6.6	12.13	217.5	
01/02/2013	18:36:50					End Lead Slurry
01/02/2013	18:36:50	229	6.6	12.18	245.1	
01/02/2013	18:37:06					Reset Total, Vol = 201.95 bbl
01/02/2013	18:37:06	220	6.6	12.34	246.9	
01/02/2013	18:37:39	269	6.5	12.68	250.5	
01/02/2013	18:38:07					Start Mixing Tail Slurry
01/02/2013	18:38:07	345	6.5	12.91	253.5	
01/02/2013	18:38:11					Wet / Dry Sample
01/02/2013	18:38:11	301	6.5	12.91	254.0	
01/02/2013	18:38:12					Wet Sample = 13.0 PPg
01/02/2013	18:38:12					Dry Sample Band # 012738
01/02/2013	18:38:12	301	6.5	12.92	254.1	
01/02/2013	18:38:14					Good Returns
01/02/2013	18:38:14	318	6.5	12.92	254.3	
01/02/2013	18:42:39	378	6.6	13.20	283.2	
01/02/2013	18:47:39	356	6.5	13.10	315.9	
01/02/2013	18:52:30					Reset Total, Vol = 112.00 bbl
01/02/2013	18:52:30	360	6.5	13.14	347.7	
01/02/2013	18:52:39	167	4.7	13.12	348.6	
01/02/2013	18:52:42					End Tail Slurry
01/02/2013	18:52:42	142	4.6	13.12	348.8	
01/02/2013	18:53:34					Wash-up
01/02/2013	18:53:34	136	4.6	13.11	352.8	
01/02/2013	18:57:39	-97	0.0	10.01	358.9	
01/02/2013	19:02:39	198	6.9	8.44	369.7	
01/02/2013	19:07:39	226	7.2	7.63	401.2	
01/02/2013	19:11:03					Reset Total, Vol = 29.79 bbl

Well			Field		Job Start		Customer		Job Number	
SHIDELER FEE 31-13CC			Mamm Creek		Jan/02/2013		Encana		C459-00979	
Date	Time 24-hr clock	Treating Pressure PSI	Flow Rate B/M	Density LB/G	Volume BBL	Message				
01/02/2013	19:11:16					Drop Top Plug				
01/02/2013	19:11:16	-111	0.0	8.46	408.7					
01/02/2013	19:11:17					Start Displacement				
01/02/2013	19:11:17	-110	0.0	8.46	408.7					
01/02/2013	19:12:39	-72	2.4	8.49	410.1					
01/02/2013	19:17:39	235	6.7	8.43	437.4					
01/02/2013	19:19:54					Good Returns				
01/02/2013	19:19:54	366	6.7	8.43	452.3					
01/02/2013	19:22:39	546	6.6	8.43	470.6					
01/02/2013	19:27:39	947	6.6	8.43	503.7					
01/02/2013	19:32:39	1297	4.7	8.43	536.6					
01/02/2013	19:37:39	1203	2.2	8.43	552.6					
01/02/2013	19:39:14					Bump Top Plug				
01/02/2013	19:39:14	2169	2.2	8.43	556.1					
01/02/2013	19:39:16					End Displacement				
01/02/2013	19:39:16	2186	0.6	8.43	556.1					
01/02/2013	19:39:38					Reset Total, Vol = 147.41 bbl				
01/02/2013	19:39:38	2212	0.0	8.43	556.1					
01/02/2013	19:42:39	2251	0.0	8.43	556.2					
01/02/2013	19:47:39	2368	0.0	8.43	556.2					
01/02/2013	19:49:18					1 BBIs Back At Bleed Off				
01/02/2013	19:49:18	-119	0.0	8.43	556.3					
01/02/2013	19:49:19					Floats Held				
01/02/2013	19:49:19					Bleed Off Pressure / Check Floats				
01/02/2013	19:49:19	-120	0.0	8.43	556.3					
01/02/2013	19:49:42					End Job				
01/02/2013	19:49:42	-118	0.0	8.43	556.3					

Post Job Summary

Average Pump Rates, bbl/min					Volume of Fluid Injected, bbl			
Slurry 4.3	N2	Mud 0.0	Maximum Rate 25.0	Total Slurry 556.3	Mud 0.0	Spacer 40.6	N2	
Treating Pressure Summary, psi				Breakdown Fluid				
Maximum 4111	Final -119	Average 642	Bump Plug to	Breakdown	Type	Volume	Density	
Avg. N2 Percent		Designed Slurry Volume		Displacement 139.0 bbl	Mix Water Temp	Cement Circulated to Surface? <input type="checkbox"/>	Volume	
						Washed Thru Perfs <input type="checkbox"/>	To	
Customer or Authorized Representative Mike Olsen			Schlumberger Supervisor ROGERS / MORROW			Circulation Lost <input type="checkbox"/>	Job Completed <input checked="" type="checkbox"/>	
						-	-	