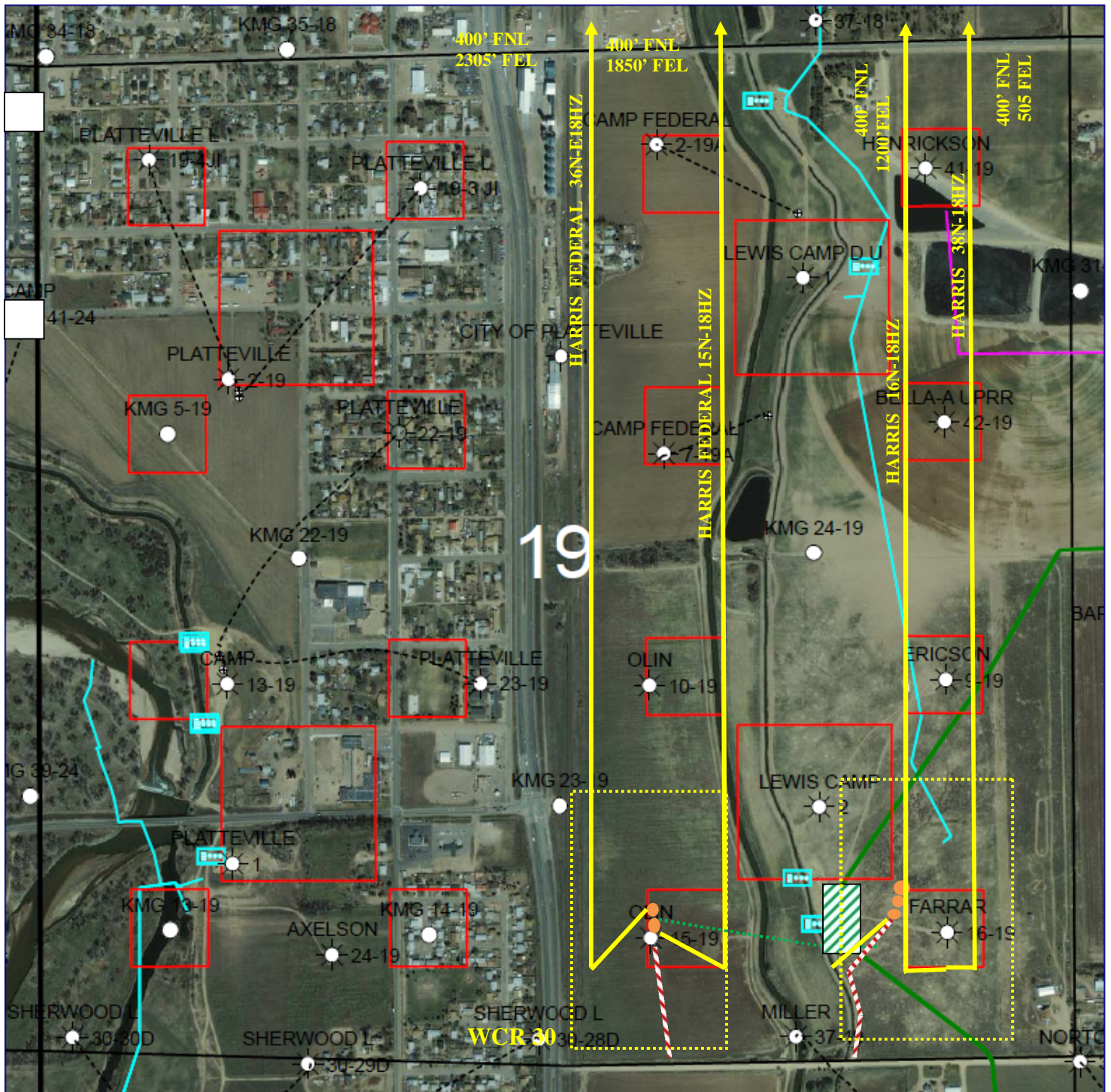


# HARRIS FEDERAL 16N-18HZ ACCESS ROAD MAP



This aerial photo and all notations and depictions thereon is provided as a courtesy and is intended to be used for general reference purposes only. Kerr-McGee/Anadarko expressly disclaims any and all representations or warranties regarding the accuracy or the completeness of the information appearing on this aerial photo and any reliance on it for any purpose whatsoever is at the sole risk of the party so relying.



- Access Road
- KMG Gathering Line
- Duke Pipeline
- RGSI Pipeline
- Proposed Flowline
- Legal Drilling Window
- Exist Battery Location
- New Battery Location
- Proposed Wellhead
- Bottomhole Location
- Potential Drill Sites



**Aerial Photo  
Sec. 19-3N-66W  
Weld County, CO**

Author:  
**Teddy Ruampant**

Edited By:

Last Edited:  
**1/12/11**