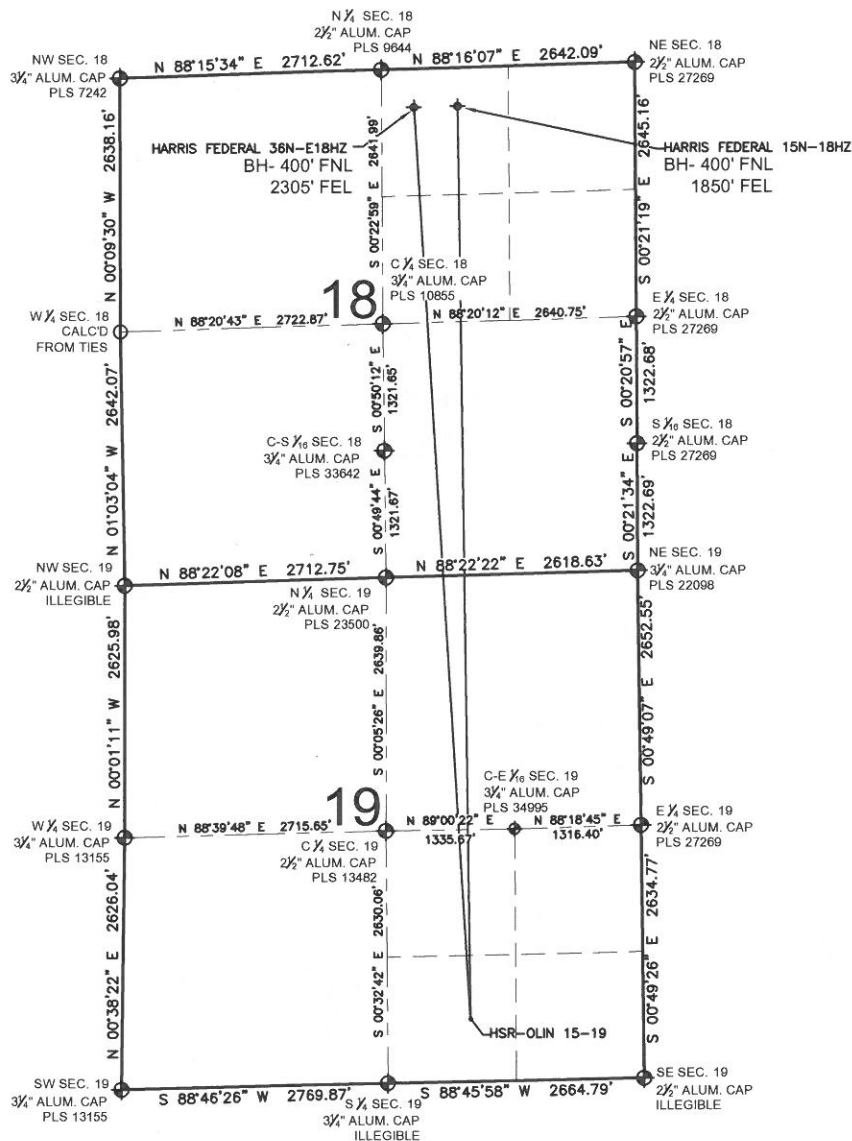


HARRIS FEDERAL 15N-18HZ MULTI-WELL PLAN

SECTION 19, TOWNSHIP 3 NORTH, RANGE 66 WEST, 6TH P.M.



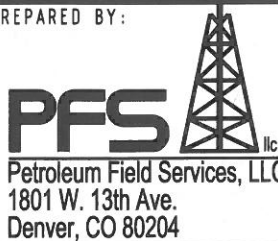
NOTES:

HARRIS FEDERAL 15N-18HZ TO BE AT 682' FSL, 1801' FEL.
 BOTTOM HOLE AT 400' FNL & 1850' FEL,
 HARRIS FEDERAL 36N-E18HZ TO BE AT 712' FSL, 1803' FEL.
 BOTTOM HOLE AT 400' FNL & 2305' FEL,
 HSR-OLIN 15-19 IS AT 652' FSL, 1798' FEL.

LEGEND

= EXISTING MONUMENT
 = BOTTOM HOLE
 BH= BOTTOM HOLE
 = PROPOSED WELL
 = EXISTING WELL

PREPARED BY:



KERR-MCGEE OIL & GAS ONSHORE LP

FIELD DATE:
03-18-13

DRAWING DATE:
04-08-13

SURFACE LOCATION:

SW 1/4 SE 1/4, SEC. 19, T3N, R66W, 6TH P.M.
 WELD COUNTY, COLORADO

