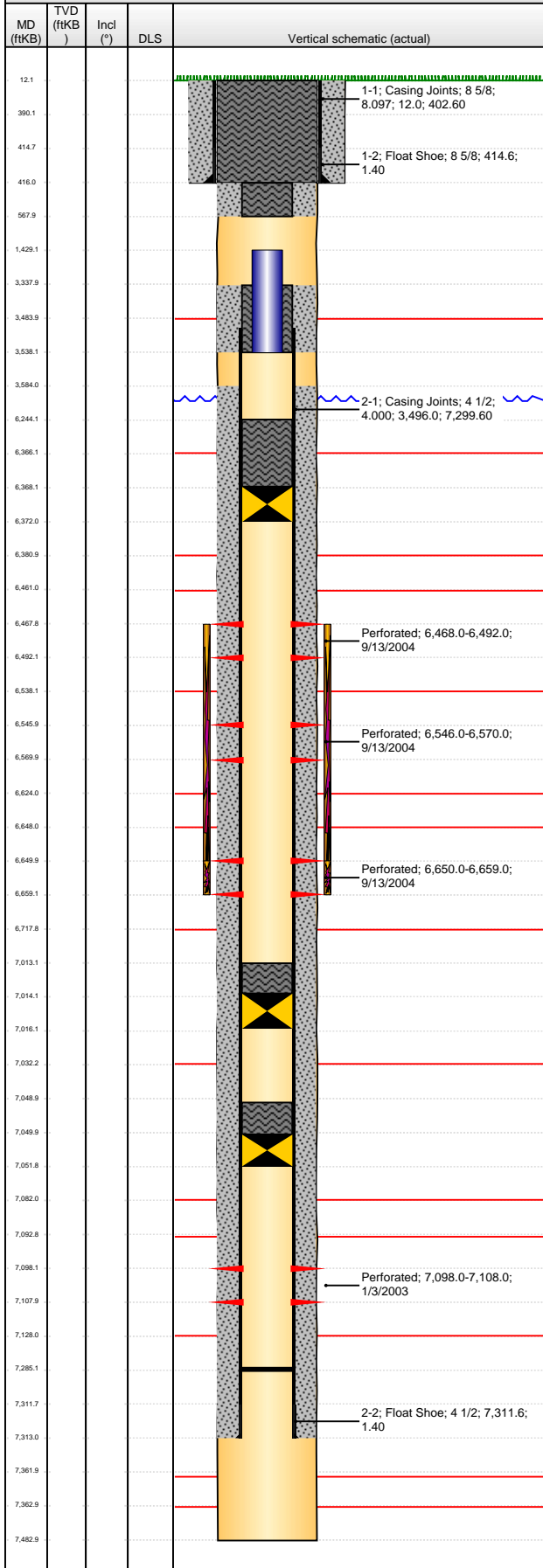


Well Name: WELLS 43-03

VERTICAL - ORIGINAL HOLE, 5/31/2013 2:09:17 PM



Well Header

API 05-123-21157	Business Unit WATTENBERG	District 15	Well Config VERTICAL
Original KB Elevation (ft) 4,712.00	KB - GL / MSL (ftKB) 12.00	Spud Date 12/17/2002	P & A Date 5/16/2013

Comment
CIBP @7050' W/2SX 9/13/04, CIBP @7014' W/2SX 9/14/04--TIGHT @ 5300--RBP 6368' W/2 SX SAND ON TOP

Directions To Well

Congressional Location

Quarter 1	Quarter 2	Quarter 3	Quarter 4	Section	Township	Twnshp N...	Range	Rng E/W Dir
		NE	SE	3	5	N	63	W

Bottom Hole Location

North-South Distance (ft)	From N or S Line	East-West Distance (ft)	From E or W Line
---------------------------	------------------	-------------------------	------------------

Plug Back Total Depths

Date	Depth (ftKB)	Method	Com
12/23/2002	7,285.0	TAG	

Wellbore Sections

Section Des	Size (in)	Act Top (ftKB)	Act Btm (ftKB)
SURFACE	12 1/4	12.0	416.0
PRODUCTION	7 7/8	416.0	7,483.0

Zone Statuses

Zone Name	Status Date	Status	Job
NIOBRARA	9/22/2004	PR	RECOMPLETION, 9/10/2004 00:00
NIOBRARA	4/6/2009	SI	CASING REPAIR, 4/2/2009 00:00
NIOBRARA	5/16/2013	P&A	ABANDON WELL, 5/10/2013 06:00
J SAND	1/10/2003	PR	DRILLING/COMPLETION - ORIGINAL, 12/18/2002 00:00
J SAND	2/24/2004	SI	DRILLING/COMPLETION - ORIGINAL, 12/18/2002 00:00
J SAND	9/13/2004	SI	RECOMPLETION, 9/10/2004 00:00
J SAND	5/16/2013	P&A	ABANDON WELL, 5/10/2013 06:00
CODELL	9/22/2004	PR	RECOMPLETION, 9/10/2004 00:00
CODELL	10/20/2006	PR	RE-FRAC, 8/8/2006 00:00
CODELL	4/6/2009	SI	CASING REPAIR, 4/2/2009 00:00
CODELL	5/16/2013	P&A	ABANDON WELL, 5/10/2013 06:00

Casing Strings

Surface, 416.0ftKB

Casing Description	Run Date	OD (in)	Wt/Len (l...)	Grade	Top (ftKB)	MD (ftKB)
Surface	12/18/2002	8 5/8	24.00	J-55	12.0	416.0

Production, 7,313.0ftKB

Casing Description	Run Date	OD (in)	Wt/Len (l...)	Grade	Top (ftKB)	MD (ftKB)
Production	12/23/2002	4 1/2	11.60	LS75	12.0	7,313.0

Cement

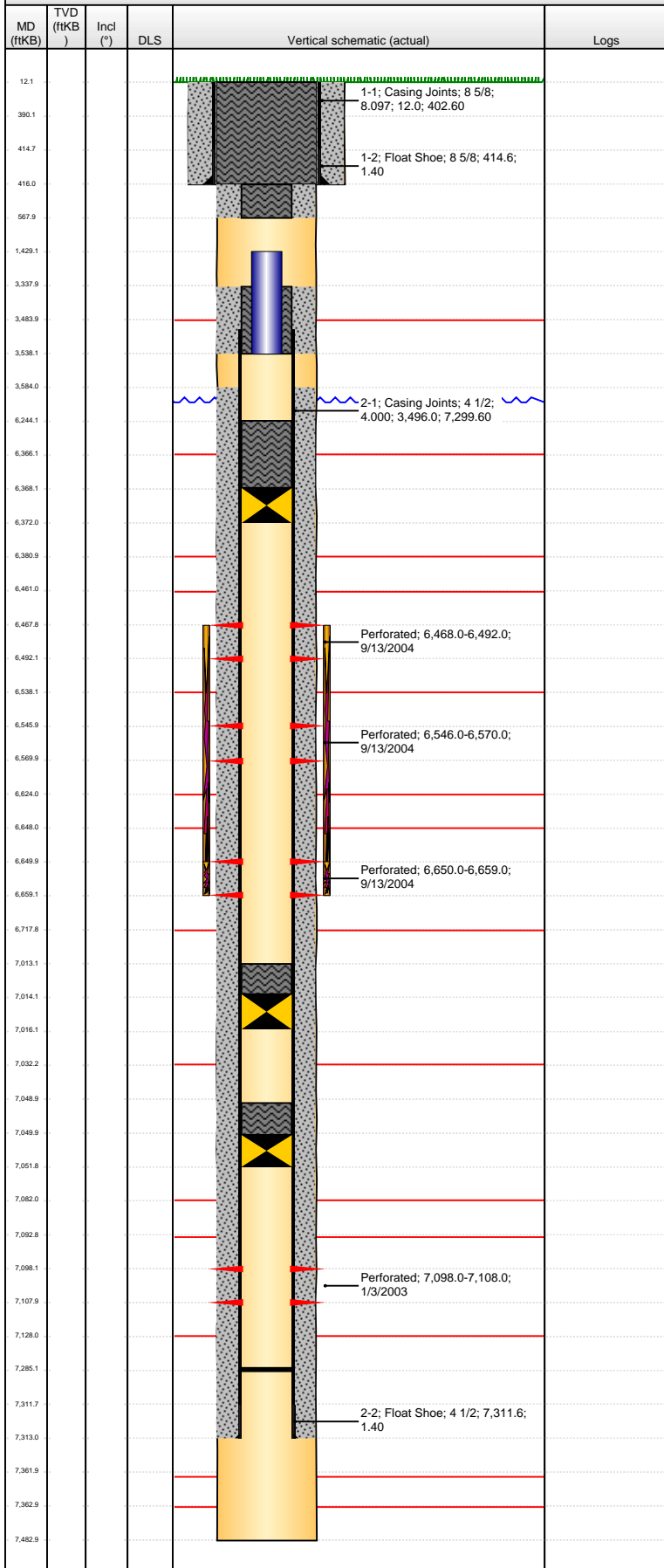
Description	Top Depth (ftKB)	Bottom Depth (ftKB)
SURFACE CASING CEMENT	12.0	416.0
PRODUCTION CASING CEMENT	3,584.0	7,313.0
CEMENT BRIDGE PLUG	7,049.0	7,050.0
CEMENT BRIDGE PLUG	7,013.0	7,014.0
Cement Plug	6,244.0	6,368.0
Cement Plug	3,338.0	3,538.0
Cement Plug	3,338.0	3,538.0
Cement Plug	416.0	568.0
Cement Plug	416.0	568.0
Cement Plug	12.1	416.0

Tubing Components

Item Des	OD (in)	Wt (lb/ft)	Grade	Jts	Len (ft)	Btm (ftKB)	Btm (TVD) (ftKB)

Well Name: WELLS 43-03

VERTICAL - ORIGINAL HOLE, 5/31/2013 2:09:18 PM



Perforation Data					
Zone	Bnch/St g	Entered Shot Total	Top (ftKB)	Btm (ftKB)	Date
NIOBRARA, ORIGINAL HOLE		96	6,468.00	6,492.00	9/13/2004
NIOBRARA, ORIGINAL HOLE		96	6,546.00	6,570.00	9/13/2004
CODELL, ORIGINAL HOLE		36	6,650.00	6,659.00	9/13/2004
J SAND, ORIGINAL HOLE		40	7,098.00	7,108.00	1/3/2003
Stimulations & Treatments					
Date	Zone	Primary Job Type			
6/30/2004	J SAND, ORIGINAL HOLE	DRILLING/COMPLETION - ORIGINAL			
Technical Result		Tech Result Details		Tech Result Note	
Comment					
ACIDIZED JSAND W/1000GAL OF 10% HCl, NO FRAC					
Date	Zone	Primary Job Type			
9/14/2004	NIOBRARA-CODELL, ORIGINAL HOLE	RECOMPLETION			
Technical Result		Tech Result Details		Tech Result Note	
Comment					
Date	Zone	Primary Job Type			
9/5/2006	CODELL, ORIGINAL HOLE	RE-FRAC			
Technical Result		Tech Result Details		Tech Result Note	
Comment					
Other In Hole					
Run Date	Des		OD (in)	Top (ftKB)	Btm (ftKB)
9/13/2004	Bridge Plug - Permanent		4	7,050.0	7,052.0
9/14/2004	Bridge Plug - Permanent		3.99	7,014.0	7,016.0
4/6/2009	Retrievable Bridge Plug		3.99	6,368.0	6,372.0
5/14/2013	Tubing fish		2 3/8	1,429.0	3,538.0
Logs					
Date	Type		Top (ftKB)	Btm (ftKB)	
12/23/2002	CEMENT BOND				
12/23/2002	COMPENSATED DENSITY		416.0	7,483.0	
12/28/2012	GYRO		12.0	6,340.0	