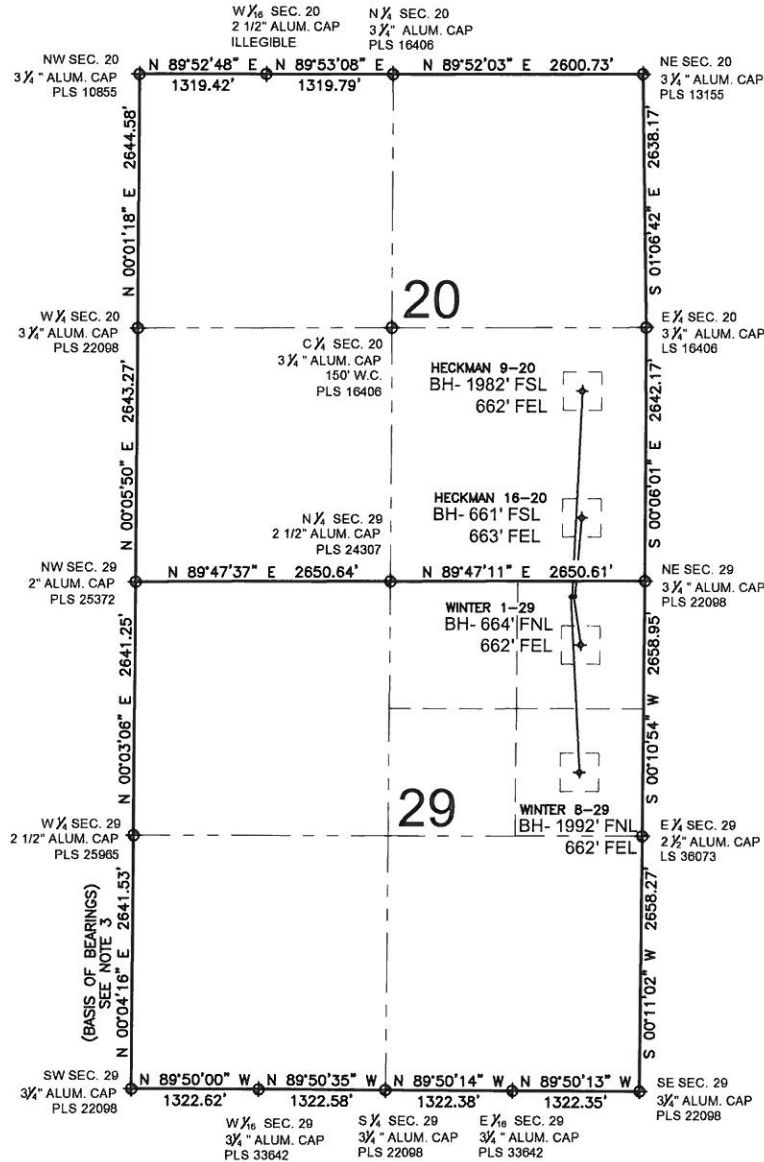


PAD DRAWING: WINTER 29-D PAD

SECTION 29, TOWNSHIP 7 NORTH, RANGE 67 WEST, 6TH P.M.



NOTES:

1. THIS FIELD SURVEY CONFORMS TO THE MINIMUM STANDARDS SET BY THE C.O.G.C.C., RULE NO. 215
2. HORIZONTAL POSITIONS AND ORTHOMETRIC ELEVATIONS SHOWN AT THE WELL HEAD, ARE BASED ON GPS-RTK POSITIONS DERIVED FROM MINIMUM 2-HOUR STATIC OBSERVATIONS CORRECTED BY THE NATIONAL GEODETIC SURVEY ONLINE POSITIONING USER SERVICE, O.P.U.S. DATUM: HORIZONTAL = NAD83/2007, VERTICAL = NAVD88
3. THE BASIS OF BEARINGS ARE STATE PLANE COORDINATE SYSTEM GRID BEARINGS SHOWN HEREON BETWEEN THE DESCRIBED MONUMENTS SHOWN HEREON.
4. GRID DISTANCES ARE SHOWN, AS MEASURED IN THE FIELD, WITH TIES TO WELLS MEASURED PERPENDICULAR TO SECTION LINES.

LEGEND

- = EXISTING MONUMENT
 = PROPOSED WELL
 = BOTTOM HOLE
 BH= BOTTOM HOLE
 = EXISTING WELL

NOTES:

- WINTER 8-29 TO BE AT 160' FNL, 771' FEL.
 BOTTOM HOLE AT 1992' FNL & 662' FEL.
 HECKMAN 9-20 TO BE AT 160' FNL, 756' FEL.
 BOTTOM HOLE AT 1982' FSL & 662' FEL OF SEC. 20.
 WINTER 1-29 TO BE AT 160' FNL, 741' FEL.
 BOTTOM HOLE AT 664' FNL & 662' FEL.
 HECKMAN 16-20 TO BE AT 160' FNL, 726' FEL.
 BOTTOM HOLE AT 661' FSL & 663' FEL OF SEC. 20.

PREPARED BY:

PFS

Petroleum Field Services, LLC
1801 W. 13th Ave.
Denver, CO 80204



BAYSWATER EXPLORATION & PRODUCTION, LLC

FIELD DATE:
04-01-13

DRAWING DATE:
04-09-13

BY:
KAD

CHECKED:
MLP

PAD NAME:

WINTER 4 PAD

SURFACE LOCATION:

NE 1/4 NE 1/4, SEC. 29, T7N, R67W, 6TH P.M.
WELD COUNTY, COLORADO

