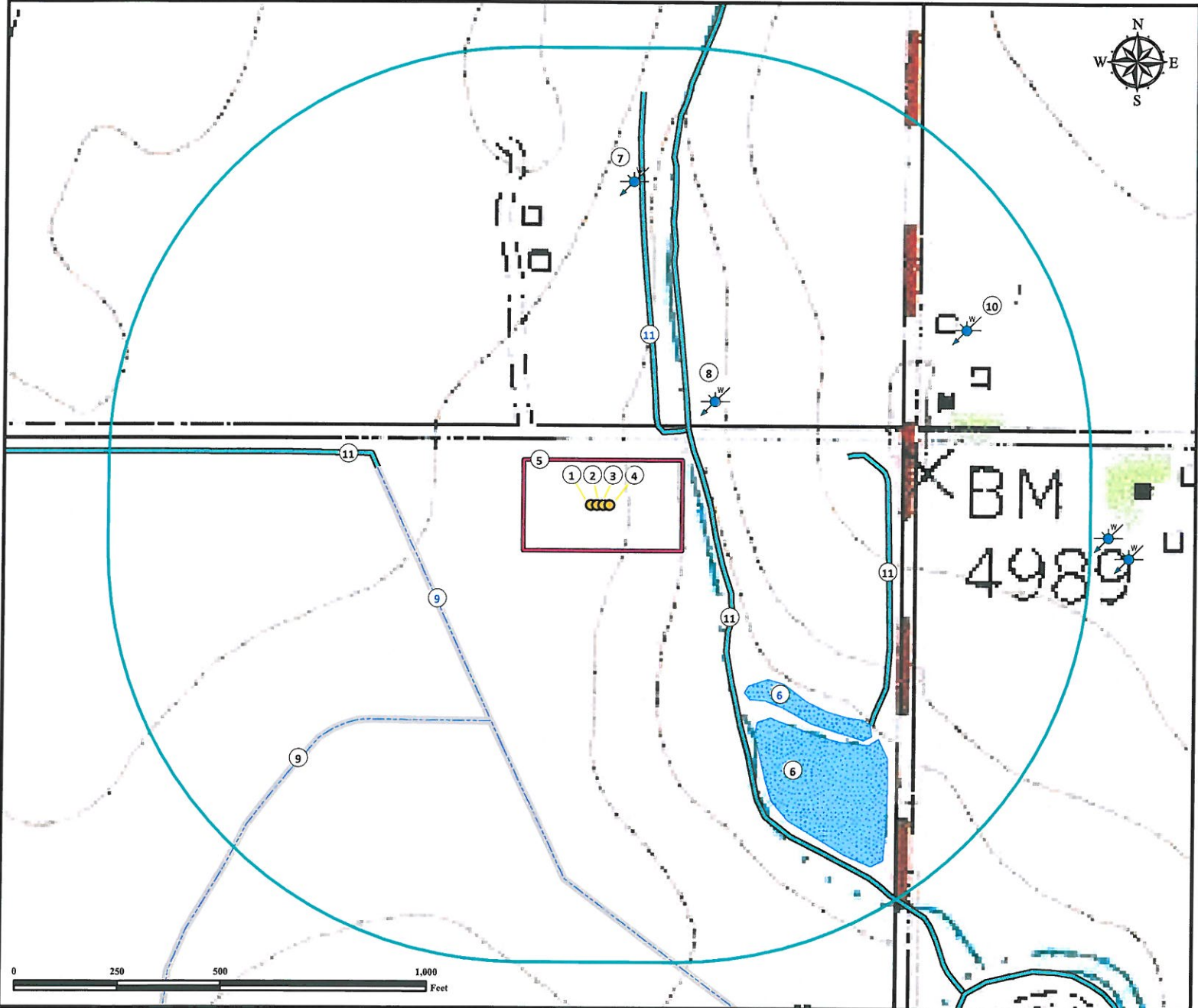


Hydrology Map

WINTER 29-D PAD

Multi Well Pad

NE¼ NE¼ SECTION 29, TOWNSHIP 7 NORTH, RANGE 67 WEST OF THE 6TH PRINCIPAL MERIDIAN



- | | | |
|---------------------------------|---|--|
| 1. Proposed Well WINTER 8-29. | 5. Operational Disturbance Area. | 9. Concrete Ditches are ±449' SW, and ±583' SW. |
| 2. Proposed Well HECKMAN 9-20. | 6. Ponds are ±574' SE, and ±657' SE. | 10. Water Well (Well Constructed, 246129) is ±993' NE. |
| 3. Proposed Well WINTER 1-29. | 7. Water Well (Well Constructed, 40849) is ±792' NE. | 11. Ditches are ±238' NE, ±264' NE, ±543' NW, |
| 4. Proposed Well HECKMAN 16-20. | 8. Water Well (Well Constructed, 245912) is ±381' NE. | and ±708' E. |

Legend

- | | | |
|-----------------------------------|---------------|------------------------------|
| Proposed Well
Disturbance Area | Pond
Ditch | Water Well
Concrete Ditch |
|-----------------------------------|---------------|------------------------------|

Reference Location

** All Measurements are Made from
Reference Well HECKMAN 9-20**

Lat: 40.552116° Long:-104.910562° (NAD83)
Elevation: 4972 Feet



Use our resources to find yours!
www.petro-fs.com
(303) 928-7128

Field Date: 04/01/2013
Drafting Date: 04/11/2013
Drafter: CPO
Revision:

Data Sources:
- TOPO courtesy USGS

Prepared for:

