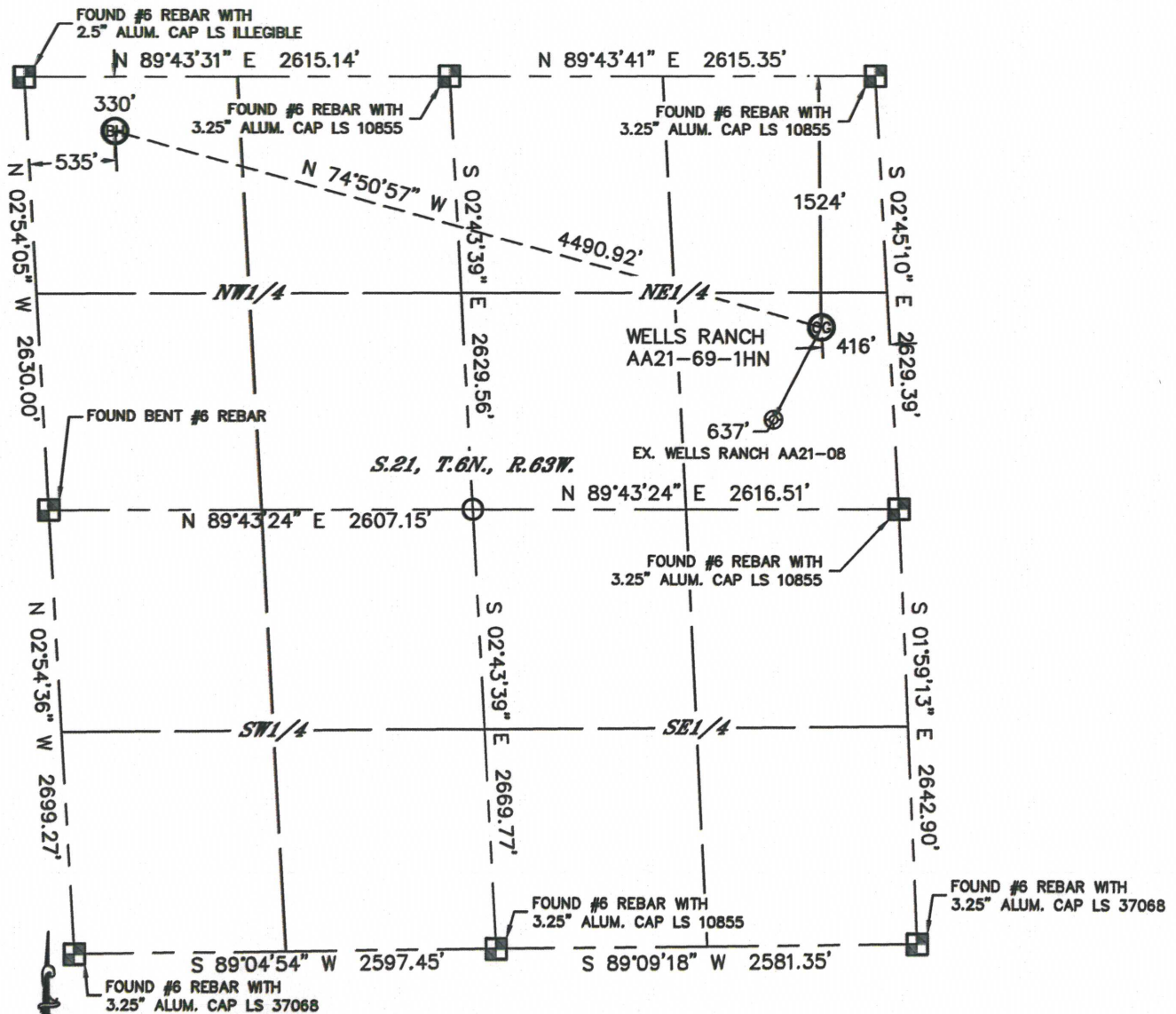


# WELL LOCATION CERTIFICATE

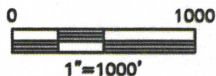
THIS MAP DOES NOT REPRESENT A BOUNDARY SURVEY

SECTION: 21  
TOWNSHIP: 6N  
RANGE: 63W



In accordance with a request from MATT VERBIT with Noble Energy Inc. Lat40°, Inc. has determined the surface location of the WELLS RANCH AA21-69-1HN to be 1524' from the NORTH line and 416' from the EAST line and the bottom hole to be 330' from the NORTH line and 535' from the WEST line as measured at right angles from the section lines of Section 21, Township 6 North, Range 63 West of the Sixth Principal Meridian, County of Weld, State of Colorado.

I hereby state that this Well Location Certificate was prepared by me, or under my direct supervision, that the fieldwork was completed on 10/19/12, for and on behalf of Noble Energy Inc. That this is not a Land Survey Plat or an Improvement Survey Plat, and that it is not to be relied upon for establishment of fence, building, or other future improvement lines.



## NOTE:

- 1) Bearings shown are Grid Bearings of the Colorado State Plane Coordinate System, North Zone, North American Datum 1983/2007. The lineal dimensions as contained herein are based upon the "U.S. Survey Foot."
- 2) Ground elevations are based on an observed GPS elevation (NAVD 1988 DATUM).
- 3) NEAREST EXISTING WELL: WELLS RANCH AA21-08, 637'
- 4) IMPROVEMENTS: See LOCATION DRAWING for all visible improvements within 400' of disturbed area.
- 5) SURFACE USE: RANGELAND
- 6) INSTRUMENT OPERATOR: ADAM KELLY

## NOTE

According to Colorado law, you must commence any legal action based upon any defect in this W.L.C. within three years after you discover such defect. In no event, may any action based upon any defect in this survey be commenced more than ten years after the date of the certificate shown hereon. (13-80-105 C.R.S.)

## LEGEND

- = ALIQUOT MONUMENT AS DESCRIBED
- = CALCULATED POSITION

## SURFACE LOCATION

LAT: 40.47516°N  
LONG: 104.43401°W  
PDOP: 1.7  
ELEV: 4721'  
1/4, 1/4: SE1/4NE1/4  
NEAREST PROPERTY LINE: 416' EAST

## BOTTOM HOLE

LAT: 40.47852°N  
LONG: 104.44854°W



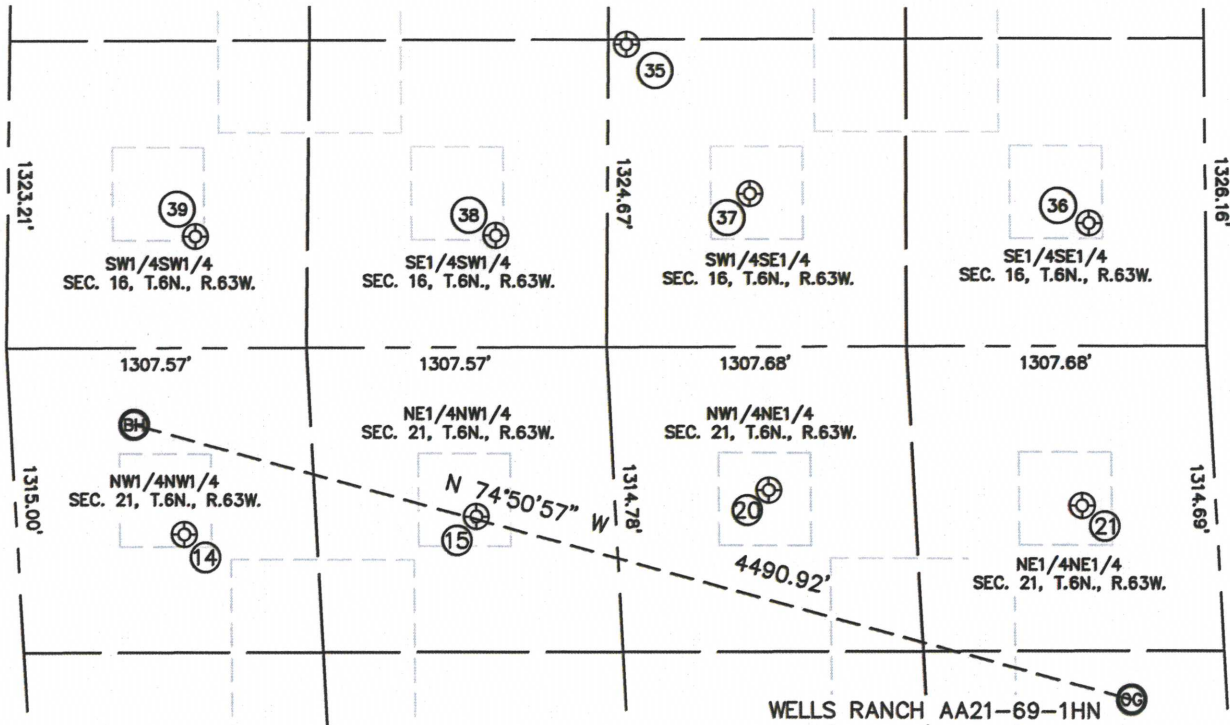
Brian T. Brinkman—On behalf of Lat40°, Inc.  
Colorado Licensed Professional  
Land Surveyor No. 38175

DATE: 11/16/2012  
PROJECT#: 2012141

# SITE SKETCH

## WELLS RANCH AA21-69-1HN

SECTION: 21  
TOWNSHIP: 6N  
RANGE: 63W



14

WELLS RANCH AA21-4  
NW1/4NW1/4  
803' FNL  
727' FWL  
LAT-40.47722N  
LONG-104.44878W  
PDOP: 1.5  
ELEV: 4677'

15

WELLS RANCH AA21-3  
NE1/4NW1/4  
729' FNL  
2004' FWL  
LAT-40.47740N  
LONG-104.44420W  
PDOP: 1.5  
ELEV: 4679'

20

WELLS RANCH AA21-2  
NW1/4NE1/4  
619' FNL  
1940' FEL  
LAT-40.47767N  
LONG-104.43961W  
PDOP: 2.3  
ELEV: 4682'

21

WELLS RANCH AA21-1  
NE1/4NE1/4  
688' FNL  
584' FEL  
LAT-40.47746N  
LONG-104.43473W  
PDOP: 2.2  
ELEV: 4706'

35

BASHOR STATE AA16-24  
SW1/4SE1/4  
1304' FSL  
2518' FEL  
LAT-40.48296N  
LONG-104.44171W  
PDOP: 2.0  
ELEV: 4679'

36

BASHOR STATE AA16-16  
SE1/4SE1/4  
529' FSL  
511' FEL  
LAT-40.48080N  
LONG-104.43453W  
PDOP: 1.9  
ELEV: 4694'

37

BASHOR STATE AA16-15  
SW1/4SE1/4  
660' FSL  
1984' FEL  
LAT-40.48118N  
LONG-104.43982W  
PDOP: 1.8  
ELEV: 4680'

38

BASHOR STATE AA16-14  
SE1/4SW1/4  
482' FSL  
2126' FWL  
LAT-40.48072N  
LONG-104.44381W  
PDOP: 1.8  
ELEV: 4678'

39

BASHOR STATE AA16-13  
SW1/4SW1/4  
479' FSL  
816' FWL  
LAT-40.48074N  
LONG-104.44852W  
PDOP: 1.7  
ELEV: 4680'

