

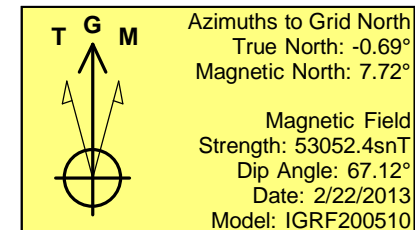
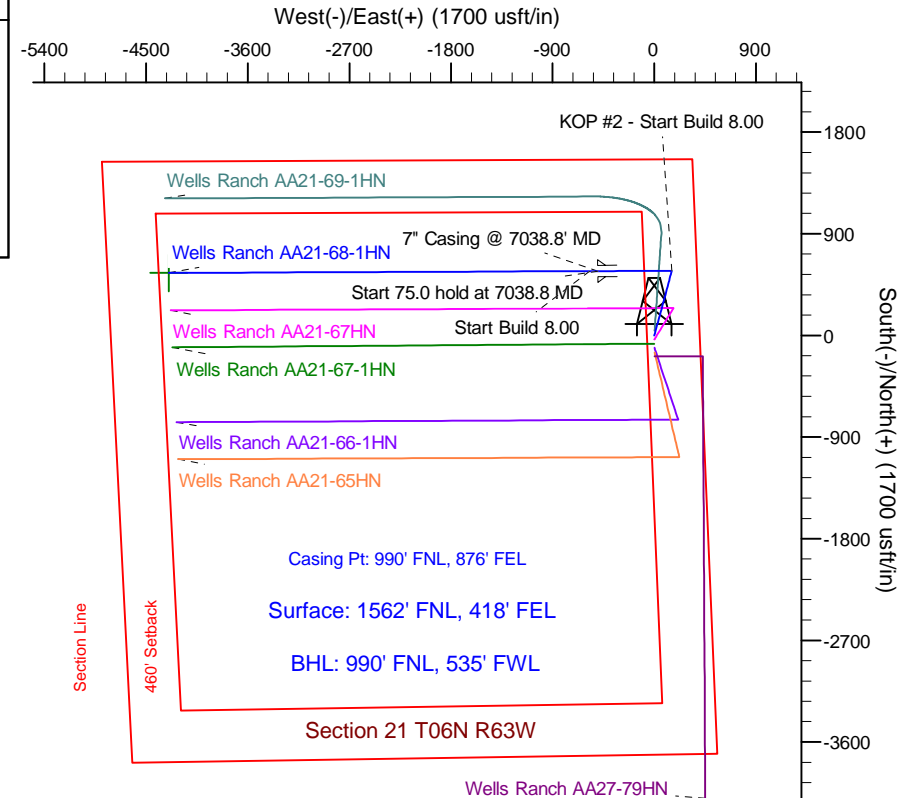
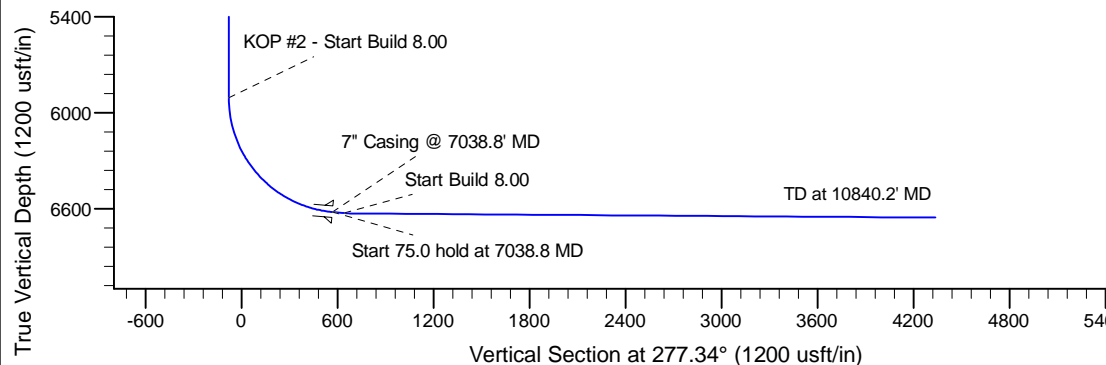
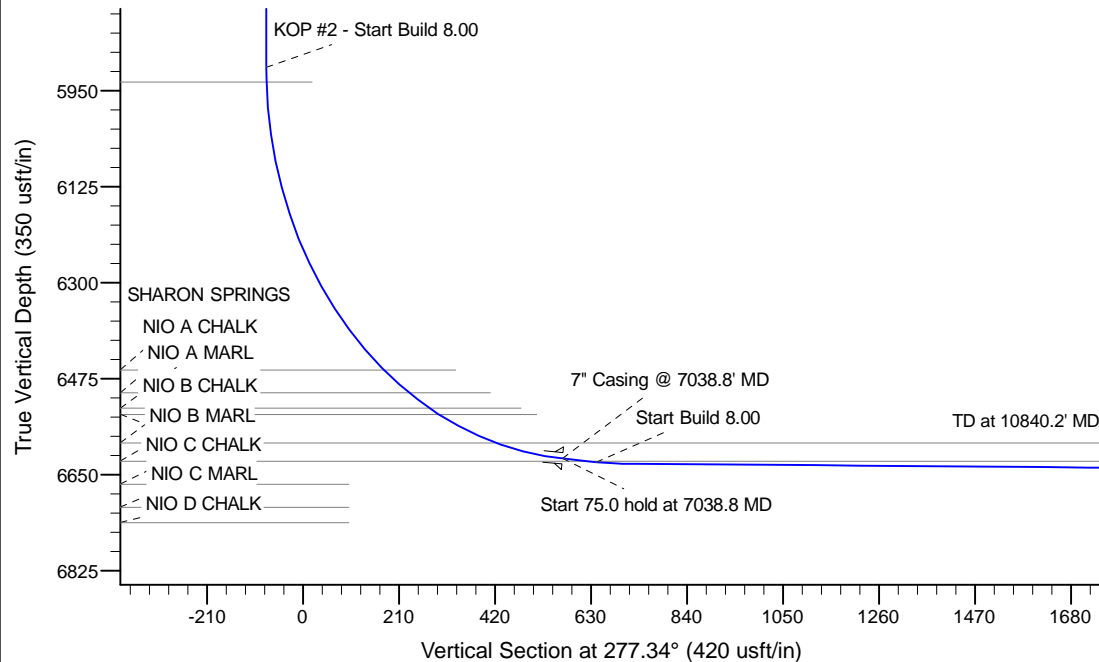
Project: Wattenberg Field
 Site: AA (Sec.21-T06N-R63W) Weld County, CO
 Well: Wells Ranch AA21-68-1HN
 Wellbore: Original Drilling
 Design: APD - Rev 0

Northern Region Drilling

Geodetic System: US State Plane 1983
 Datum: North American Datum 1983
 Ellipsoid: GRS 1980
 Zone: Colorado Northern Zone
 System Datum: Mean Sea Level

SECTION DETAILS

Sec	MD	Inc	Azi	TVD	+N/-S	+E/-W	Dleg	TFace	VSect	Target
1	0.0	0.00	0.00	0.0	0.0	0.0	0.00	0.00	0.0	
2	1500.0	0.00	0.00	1500.0	0.0	0.0	0.00	0.00	0.0	
3	2250.5	15.01	15.16	2241.9	94.3	25.6	2.00	15.16	-13.3	
4	3783.9	15.01	15.16	3723.1	477.7	129.4	0.00	0.00	-67.4	
5	4534.4	0.00	0.00	4465.0	572.0	155.0	2.00	180.00	-80.7	
6	5976.3	0.00	0.00	5906.9	572.0	155.0	0.00	0.00	-80.7	
7	7038.8	85.00	269.76	6620.3	569.3	-498.8	8.00	269.76	567.4	
8	7113.8	85.00	269.76	6626.9	569.0	-573.5	0.00	0.00	641.4	
9	7171.3	89.60	269.76	6629.6	568.7	-630.9	8.00	0.00	698.4	
10	10840.2	89.60	269.76	6655.2	553.5	-4299.7	0.00	0.00	4335.1	Wells Ranch AA21-68-1HN BHL 990'FNL, 535'FWL



WELL DETAILS: Wells Ranch AA21-68-1HN

Ground Level: 4722.0			
Northing	Easting	Latitude	Longitude
0.0	0.0	1417683.57	3296550.66
		40.475050	-104.434020

Plan: APD - Rev 0 (Wells Ranch AA21-68-1HN/Original Drilling)

Created By: Shailey Jewell Date: 13:36, March 13 2013

OK to submit with 2A as per Noble Drilling
3/14/13 10:55