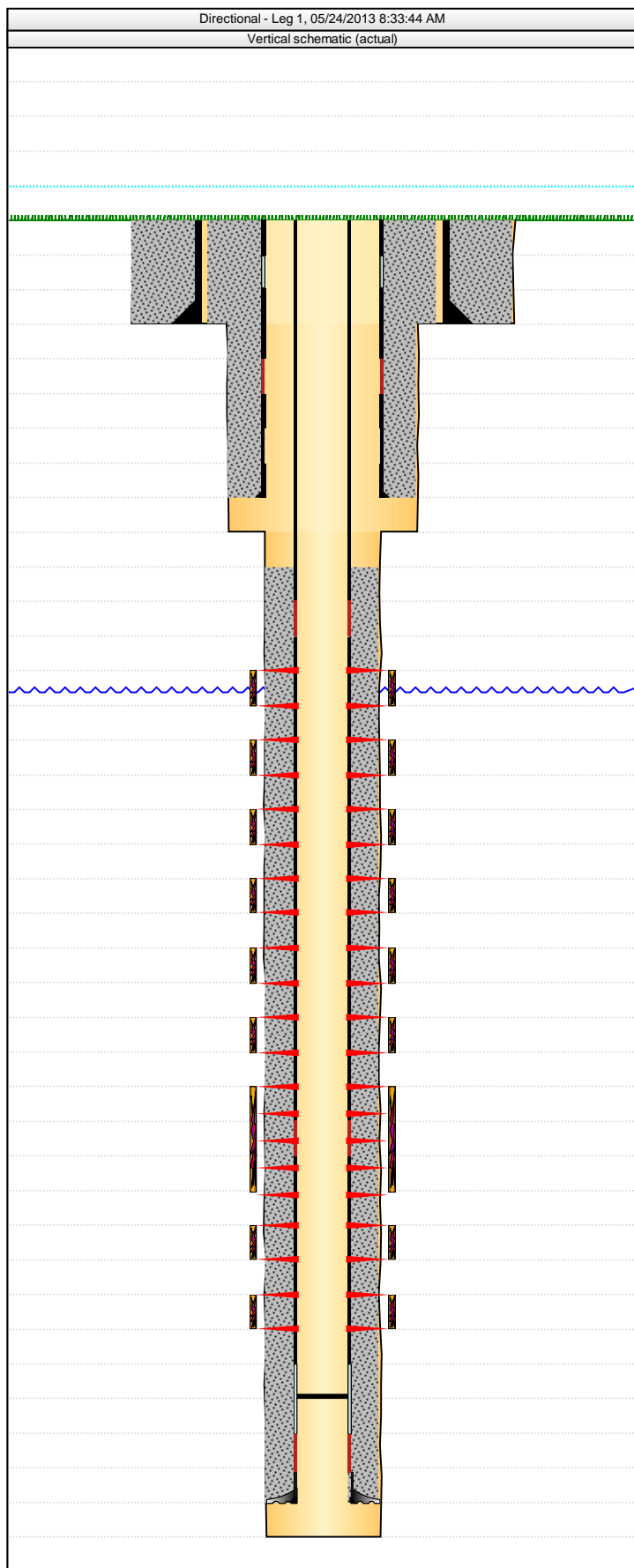




Final Well Report Detailed (graphic)

Well Name: SG 8515D-25 D36 496

API #	Well Type	Business Unit	SBU	Area	Pad	State	County/Parish
05045209340000	Gas	Southern Rockies	North Piceance	Story Gulch	D36 496	CO	GARFIELD



Well Header Setup

Well Name		API #	
SG 8515D-25 D36 496		05045209340000	
Original KB Elevation (ft)	Ground Elevation (ft)	Spud Date	Final Rig Relea...
8,320.00	8,290.00	09/19/2012	10/26/2012
Surface Legal Location		Latitude (decimal) (°)	Longitude (decimal) (°)
		39.66525600	-108.12267200

Wellbore Sections Setup

Wellbore Type Leg 1		Kick Off Depth (ftKB)	VS Dir (°) 69.82	
Section Des	Hole Size (in)		Act Top (ftKB)	Act Btm (ftKB)
Conductor	30		30.0	120.0
Surface	14 3/4		120.0	3,040.0
Production	8 3/4		3,040.0	12,520.0

Plug Back Total Depths

Date	Depth (ftKB)	Method	Com
03/25/2013	12,476.0	Wireline	

Casing Data

Conductor

Casing Description			Run Date		Set Depth (ftKB)	
Conductor			12/20/2011		120.0	
Item Des	OD (in)	ID (in)	Wt (lb/ft)	Grade	Len (ft)	
Casing Joints	20		52.78	A53B	120.00	

Surface

Casing Description			Run Date		Set Depth (ftKB)
Surface			09/21/2012		3,017.0
Item Des	OD (in)	ID (in)	Wt (lb/ft)	Grade	Len (ft)
Float Shoe	9 5/8			J-55	1.50
Casing Joints	9 5/8	8.921	36.00	J-55	41.69
Float Collar	9 5/8			J-55	1.50
Casing Joints	9 5/8	8.921	36.00	J-55	125.06
Collar	9 5/8				1.40
Casing Joints	9 5/8	8.921	36.00	K-55	2,816.57
Casing Joints	9 5/8				5.00
Casing Joints	9 5/8	8.921	36.00	J-55	28.75

Production

Casing Description			Run Date		Set Depth (ftKB)
Production			10/25/2012		12,500.0
Item Des	OD (in)	ID (in)	Wt (lb/ft)	Grade	Len (ft)
Casing Joints	4 1/2	4.000	11.60	P-110	7,982.82
Marker joint	4 1/2	4.000	11.60	P-110	20.21
Casing Joints	4 1/2	4.000	11.60	P-110	3,009.85
Marker Joint	4 1/2	4.000	11.60	P-110	19.44
Casing Joints	4 1/2	4.000	11.60	P-110	1,446.50
Float Collar	4 1/2	4.000	11.60	P-110	1.50
Shoe Joint	4 1/2	4.000	11.60	P-110	21.68
Float Shoe	4 1/2	4.000	11.60	P-110	1.50

Cement Data

Conductor, 120.0ftKB Proposed? No

Description Conductor Cement		String Conductor, 120.0ftKB Proposed? No	Wellbore Leg 1		Type Casing	
Stg # 1	Description Conductor Cement		Top (ftKB) 30.0	Btm (ftKB) 120.0	Full Return?	
Sequence		Fluid Des		Amount (sacks)	Class	
Lead				170	A	

Surface, 3,017.0ftKB Proposed? No

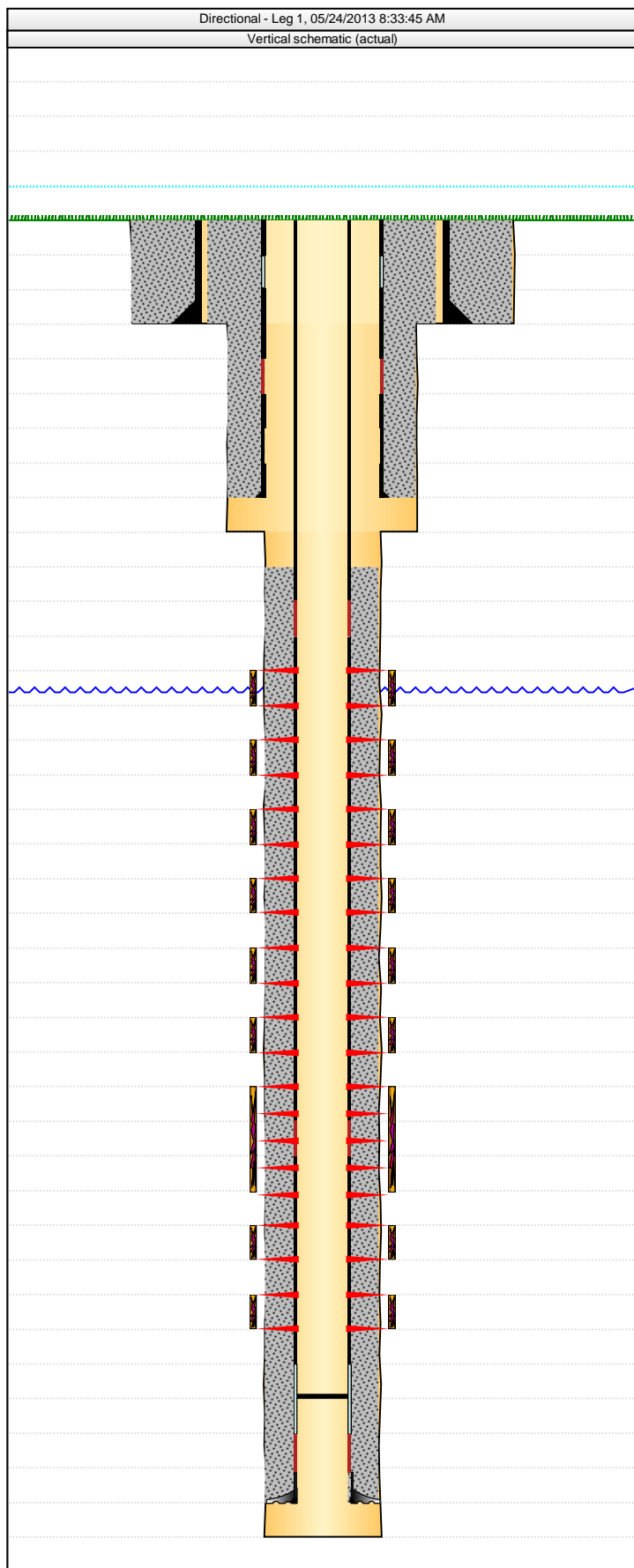
Description		String	Wellbore	Type
Surface Casing Cement		Surface, 3,017.0ftKB Proposed? No	Leg 1	Casing
Stg #	Description	Top (ftKB)	Btm (ftKB)	Full Return?
1	Surface Casing Cement	30.0	3,017.0	



Final Well Report Detailed (graphic)

Well Name: SG 8515D-25 D36 496

API #	Well Type	Business Unit	SBU	Area	Pad	State	County/Parish
05045209340000	Gas	Southern Rockies	North Piceance	Story Gulch	D36 496	CO	GARFIELD



Sequence	Fluid Des	Amount (sacks)	Class
Fill	Pressure NET 160 bbls.		
Fill	60 bbls Zone Lock w/ 40 bbls S001		
Fill	50 bbls Mud Push II		
Lead	9.0# LiteCrete w/ 50.5% SVF	1,136	

Production, 12,500.0ftKB Proposed? <proposedrun>			
Description	String	Wellbore	Type
Production Casing Cement	Production, 12,500.0ftKB Proposed? <proposedrun>	Leg 1	Casing

Stg #	Description	Top (ftKB)	Btm (ftKB)	Full Return?
3	Production Casing Cement	4,026.0	12,500.0	
Sequence	Fluid Des	Amount (sacks)	Class	
Tail	13.00 ppg TXI Tail	585		
Lead	12.00 ppg TXI	646		
Lead	11.00 ppg TXI	908		

Tubing Data			
Tubing Description		Tubing Set Date	Set Depth (ftKB)
Item Des	OD (in)	ID (in)	Len (ft)

Rod Data		
Rod Description		Run Date
		Set Depth (ftKB)
Item Des	OD (in)	Len (ft)

Zones			
Zone Name	Wellbore	Top Depth (ftKB)	Btm (ftKB)
Williams Fork	Leg 1	8,440.0	12,409.9
Cur Stat Date	Current Status	Formation(s)	
04/23/2013	Producing	Williams Fork	
Zone Name	Wellbore	Top Depth (ftKB)	Btm (ftKB)
Rollins	Leg 1	12,410.0	12,520.0
Cur Stat Date	Current Status	Formation(s)	
		Rollins	

Perforation Data				
Stage #	Type	Top Depth (ftKB)	Bottom Depth (ftKB)	Zone
9	Perforated	8,456.0	8,834.0	Williams Fork, Leg 1
8	Perforated	8,915.0	9,315.0	Williams Fork, Leg 1
7	Perforated	9,370.0	9,774.0	Williams Fork, Leg 1
6	Perforated	9,794.0	10,183.0	Williams Fork, Leg 1
5	Perforated	10,198.0	10,585.0	Williams Fork, Leg 1
4	Perforated	10,597.0	10,980.0	Williams Fork, Leg 1
3	Perforated	11,004.0	11,377.0	Williams Fork, Leg 1
2	Perforated	11,396.0	11,787.0	Williams Fork, Leg 1
1	Perforated	11,793.0	12,187.0	Williams Fork, Leg 1

Other In Hole					
OD (in)	Des	Top (ftKB)	Btm (ftKB)	ID (in)	Make

Wellhead Description					
Install Date	Type	Make	Size (in)	WP (psi)	
Make	Model	Section	Top Sz (in)	Btm Sz (in)	WP (psi)