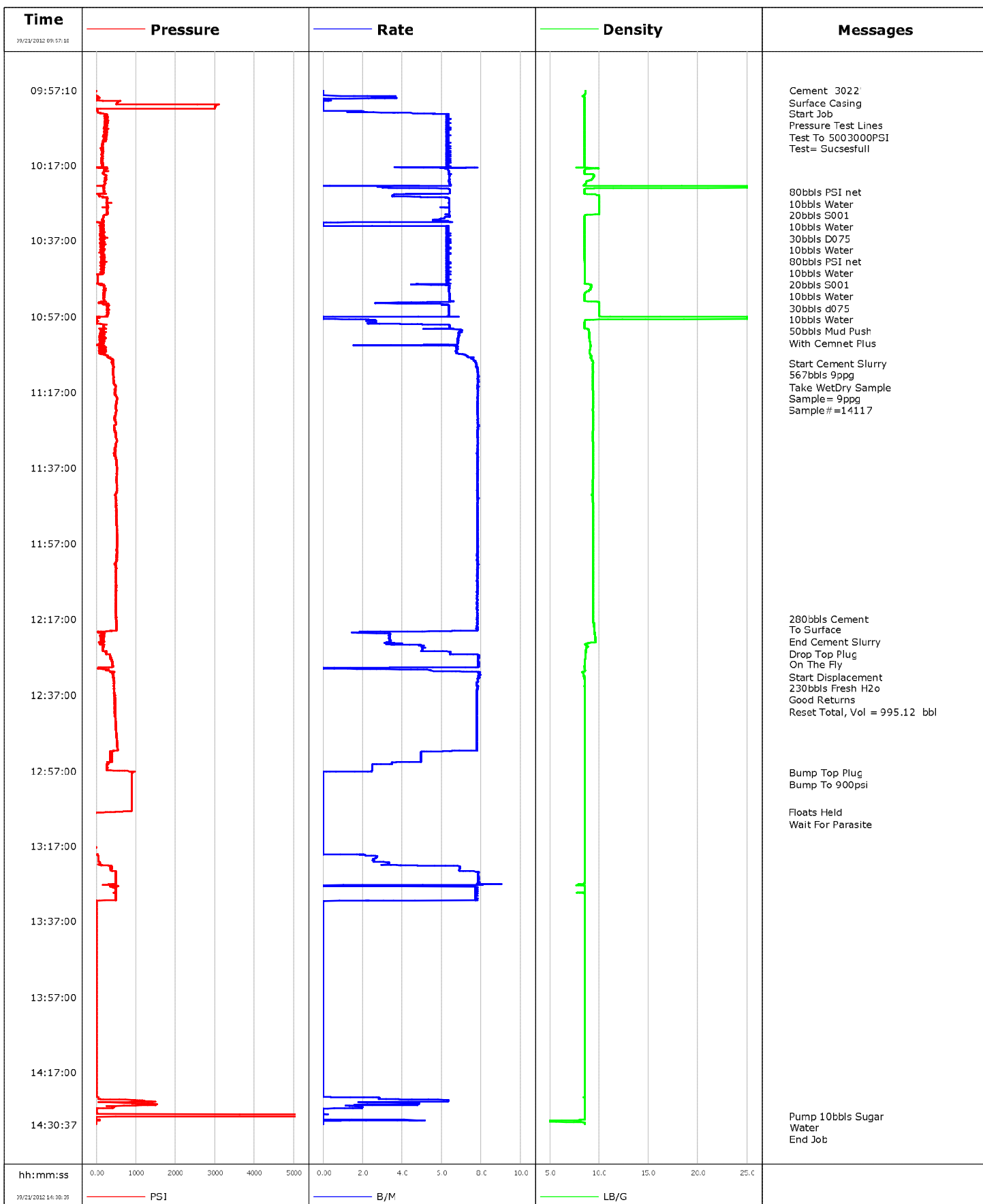


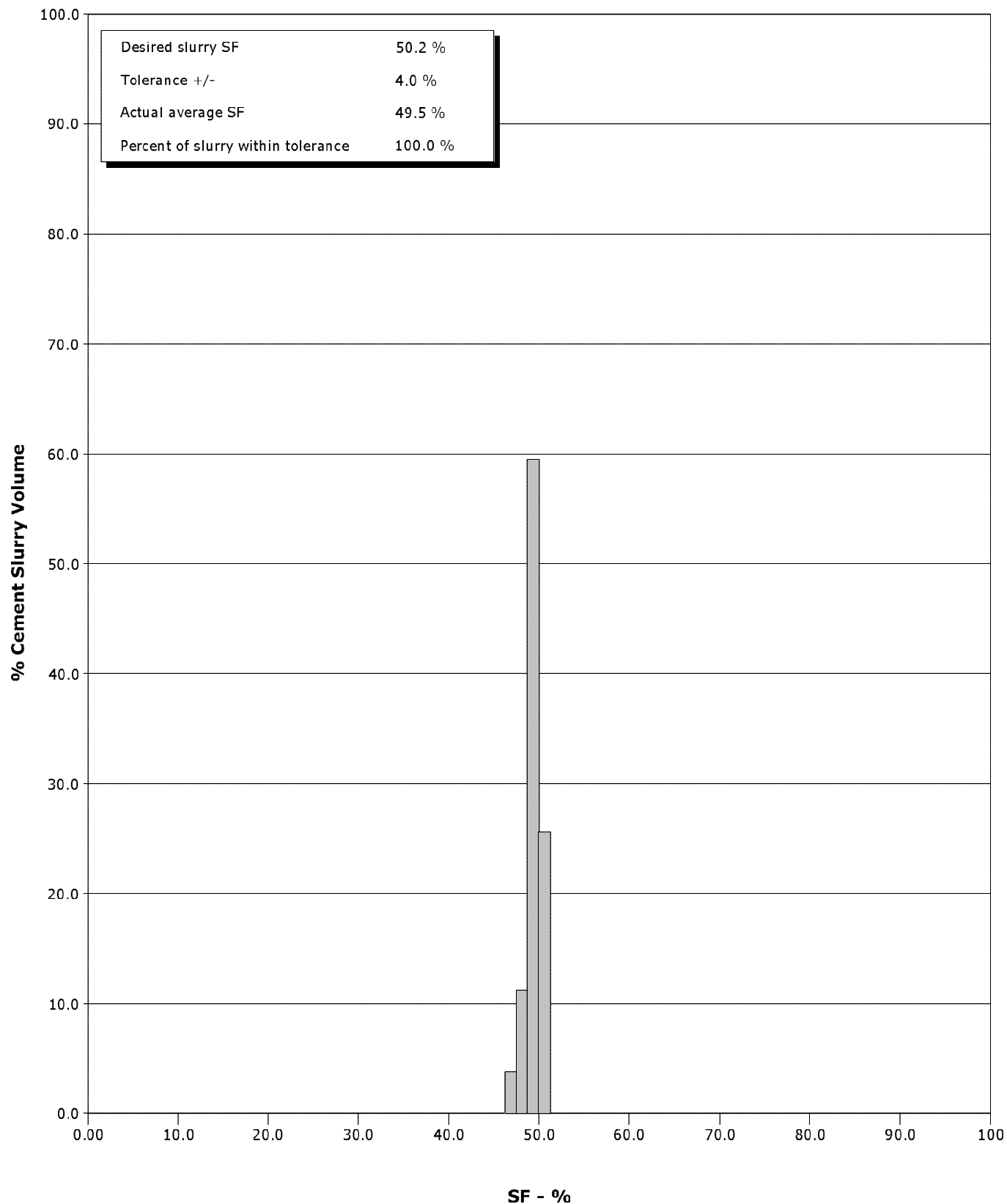
Well	SG 8515 D-25	Client	ENCANA
Field	STORY GULCH	SIR No.	C610-00566
Engineer		Job Type	SURFACE
Country	United States	Job Date	09-21-2012



Schlumberger Cementing Qa/Qc SFM Report

Well	SG 8515 D-25	Client	ENCANA
Field	STORY GULCH	SIR No.	C610-00566
Engineer		Job Type	SURFACE
Country	United States	Job Date	09-21-2012

Cement Slurry - 09/21/2012 11:09:26 to 09/21/2012 12:17:00





Cementing Service Report

				Customer ENCANA		Job Number C610-00566	
Well SG 8515 D-25			Location (legal) N PARACHUTE		Schlumberger Location GCC		Job Start Sep/21/2012
Field STORY GULCH		Formation Name/Type		Deviation	Bit Size	Well MD	Well TVD
County GARFILED		State/Province Colorado		BHP	BHST	BHCT	Pore Press. Gradient
Well Master		API/UWI					
Rig Name		Drilled For	Service Via	Casing/Liner			
				Depth,	Size,	Weight,	Grade
Offshore Zone		Well Class	Well Type				
Drilling Fluid Type		Max. Density	Plastic Viscosity	Tubing/Drill Pipe			
				Depth,	Size,	Weight,	Grade
Service Line Cementing		Job Type SURFACE					
Max. Allowed Tub. Press		Max. Allowed Ann. Press	WH Connection	Perforations/Open Hole			
				Top,	Bottom,	No. of Shots	Total Interval
							Diameter
				Treat Down Casing	Displacement 230.0 bbl	Packer Type	Packer Depth
				Tubing Vol.	Casing Vol. 233.0 bbl	Annular Vol. 384.0 bbl	Openhole Vol. 635.0 bbl
Casing/Tubing Secured <input checked="" type="checkbox"/>		1 Hole Vol. Circulated prior to Cement <input checked="" type="checkbox"/>		Casing Tools		Squeeze Job	
Lift Pressure 1495 psi				Shoe Type Auto-Fill		Squeeze Type	
Pipe Rotated <input type="checkbox"/>		Pipe Reciprocated <input type="checkbox"/>		Shoe Depth 3022.0 ft		Tool Type	
No. Centralizers		Top Plugs 1	Bottom Plugs	Stage Tool Type		Tool Depth	
Cement Head Type Single				Stage Tool Depth		Tail Pipe Size	
Job Scheduled For Sep/21/2012		Arrived on Location Sep/21/2012	Leave Location Sep/21/2012	Collar Type Diff-Fill		Tail Pipe Depth	
				Collar Depth 2977.0 ft		Sqz. Total Vol.	
Date	Time 24-hr clock	Treating Pressure PSI	Flow Rate B/M	Density LB/G	Volume BBL	Message	
09/21/2012	09:32:00					Started Acquisition	
09/21/2012	09:57:10	-10	0.0	8.60	0.0		
09/21/2012	09:57:11					Cement 3022'	
09/21/2012	09:57:11					Surface Casing	
09/21/2012	09:57:11	-9	0.0	8.60	0.0		
09/21/2012	09:57:13					Start Job	
09/21/2012	09:57:13	-9	0.0	8.60	0.0		
09/21/2012	09:57:15					Pressure Test Lines	
09/21/2012	09:57:15					Test To 5003000PSI	
09/21/2012	09:57:15	-10	0.0	8.60	0.0		
09/21/2012	09:57:16					Test= Sucsesfull	
09/21/2012	09:57:16	-9	0.0	8.60	0.0		
09/21/2012	09:57:30	-12	0.0	8.60	0.0		
09/21/2012	09:58:00	-13	0.0	8.60	0.0		
09/21/2012	09:58:30	-14	0.0	8.52	0.0		
09/21/2012	09:59:00	35	2.5	8.49	1.1		
09/21/2012	09:59:30	3	0.0	8.52	2.3		
09/21/2012	10:00:00	581	0.0	8.52	2.3		
09/21/2012	10:00:30	522	0.0	8.52	2.3		
09/21/2012	10:01:00	3039	0.0	8.52	2.3		
09/21/2012	10:01:30	3006	0.0	8.52	2.3		

Well			Field		Job Start	Customer		Job Number	
SG 8515 D-25			STORY GULCH		Sep/21/2012	ENCANA		C610-00566	
Date	Time 24-hr clock	Treating Pressure PSI	Flow Rate B/M	Density LB/G	Volume BBL	Message			
09/21/2012	10:02:30	6	0.0	8.52	2.3				
09/21/2012	10:03:00	32	2.0	8.52	2.9				
09/21/2012	10:03:30	258	6.2	8.52	5.3				
09/21/2012	10:04:00	189	6.4	8.52	8.5				
09/21/2012	10:04:30	280	6.2	8.52	11.6				
09/21/2012	10:05:00	273	6.4	8.52	14.8				
09/21/2012	10:05:30	217	6.4	8.52	18.0				
09/21/2012	10:06:00	264	6.2	8.52	21.1				
09/21/2012	10:06:30	250	6.4	8.52	24.3				
09/21/2012	10:07:00	225	6.4	8.52	27.4				
09/21/2012	10:07:30	235	6.2	8.52	30.6				
09/21/2012	10:08:00	196	6.2	8.52	33.7				
09/21/2012	10:08:30	214	6.4	8.52	36.9				
09/21/2012	10:09:00	206	6.4	8.52	40.0				
09/21/2012	10:09:30	228	6.4	8.52	43.2				
09/21/2012	10:10:00	250	6.4	8.52	46.3				
09/21/2012	10:10:30	155	6.4	8.52	49.5				
09/21/2012	10:11:00	148	6.5	8.52	52.6				
09/21/2012	10:11:30	132	6.2	8.52	55.8				
09/21/2012	10:12:00	145	6.2	8.52	58.9				
09/21/2012	10:12:30	148	6.4	8.52	62.1				
09/21/2012	10:13:00	153	6.4	8.52	65.3				
09/21/2012	10:13:30	152	6.2	8.52	68.4				
09/21/2012	10:14:00	136	6.4	8.52	71.6				
09/21/2012	10:14:30	155	6.2	8.52	74.7				
09/21/2012	10:15:00	116	6.2	8.52	77.9				
09/21/2012	10:15:30	137	6.4	8.52	81.0				
09/21/2012	10:16:00	148	6.2	8.52	84.2				
09/21/2012	10:16:30	115	6.2	8.52	87.3				
09/21/2012	10:17:00	144	6.4	8.52	90.5				
09/21/2012	10:17:30	265	6.4	8.52	93.7				
09/21/2012	10:18:00	226	6.3	8.70	96.7				
09/21/2012	10:18:30	201	6.4	8.52	99.9				
09/21/2012	10:19:00	153	6.4	8.51	103.1				
09/21/2012	10:19:30	222	6.4	9.47	106.3				
09/21/2012	10:20:00	232	6.4	9.50	109.5				
09/21/2012	10:20:30	220	6.4	9.31	112.7				
09/21/2012	10:21:00	214	6.4	9.02	115.9				
09/21/2012	10:21:30	206	6.4	8.72	119.1				
09/21/2012	10:22:00	209	6.4	8.54	122.3				
09/21/2012	10:22:30	180	4.9	18.33	125.2				
09/21/2012	10:23:00	173	4.9	11.45	126.8				
09/21/2012	10:23:30	183	6.4	8.51	129.9				
09/21/2012	10:24:00	198	6.4	8.51	133.1				
09/21/2012	10:24:04					30bbbls PSI net			
09/21/2012	10:24:04					10bbbls Water			
09/21/2012	10:24:04					20bbbls S001			
09/21/2012	10:24:04					10bbbls Water			
09/21/2012	10:24:04					30bbbls D075			
09/21/2012	10:24:04					10bbbls Water			
09/21/2012	10:24:04					30bbbls PSI net			
09/21/2012	10:24:04	191	6.4	8.51	133.6				
09/21/2012	10:24:05					10bbbls Water			
09/21/2012	10:24:05	192	6.4	8.51	133.7				

Well			Field		Job Start	Customer		Job Number
SG 8515 D-25			STORY GULCH		Sep/21/2012	ENCANA		C610-00566
Date	Time 24-hr clock	Treating Pressure PSI	Flow Rate B/M	Density LB/G	Volume BBL	Message		
09/21/2012	10:25:00	67	3.5	10.00	138.3			
09/21/2012	10:25:25					20bbls S001		
09/21/2012	10:25:25					10bbls Water		
09/21/2012	10:25:25					30bbls d075		
09/21/2012	10:25:25	254	5.3	10.03	140.0			
09/21/2012	10:25:26					10bbls Water		
09/21/2012	10:25:26					50bbls Mud Push		
09/21/2012	10:25:26	251	5.9	10.03	140.1			
09/21/2012	10:25:30	145	6.3	10.04	140.5			
09/21/2012	10:26:00	252	6.4	10.04	143.7			
09/21/2012	10:26:24					With Cemnet Plus		
09/21/2012	10:26:24	251	6.4	10.04	146.3			
09/21/2012	10:26:30	266	6.4	10.04	146.9			
09/21/2012	10:27:00	288	6.4	10.04	150.1			
09/21/2012	10:27:30	260	6.4	10.04	153.3			
09/21/2012	10:28:00	264	6.4	10.04	156.5			
09/21/2012	10:28:30	277	6.4	10.04	159.6			
09/21/2012	10:29:00	269	6.4	10.04	162.8			
09/21/2012	10:29:30	275	6.4	10.04	166.0			
09/21/2012	10:30:00	254	6.2	9.07	169.2			
09/21/2012	10:30:30	188	6.4	8.52	172.4			
09/21/2012	10:31:00	152	6.1	8.52	175.5			
09/21/2012	10:31:30	142	5.6	8.52	178.4			
09/21/2012	10:32:00	-13	3.4	8.52	181.4			
09/21/2012	10:32:30	114	0.0	8.52	181.5			
09/21/2012	10:33:00	125	6.2	8.52	181.7			
09/21/2012	10:33:30	124	6.2	8.52	184.9			
09/21/2012	10:34:00	180	6.4	8.52	188.0			
09/21/2012	10:34:30	151	6.2	8.52	191.2			
09/21/2012	10:35:00	134	6.4	8.52	194.3			
09/21/2012	10:35:30	128	6.4	8.52	197.5			
09/21/2012	10:36:00	162	6.4	8.52	200.6			
09/21/2012	10:36:30	100	6.4	8.52	203.8			
09/21/2012	10:37:00	179	6.4	8.52	206.9			
09/21/2012	10:37:30	94	6.2	8.52	210.1			
09/21/2012	10:38:00	188	6.2	8.52	213.2			
09/21/2012	10:38:30	121	6.2	8.52	216.4			
09/21/2012	10:39:00	195	6.5	8.53	219.6			
09/21/2012	10:39:30	100	6.4	8.53	222.7			
09/21/2012	10:40:00	165	6.2	8.53	225.9			
09/21/2012	10:40:30	125	6.2	8.53	229.0			
09/21/2012	10:41:00	170	6.4	8.53	232.2			
09/21/2012	10:41:30	115	6.4	8.53	235.3			
09/21/2012	10:42:00	139	6.2	8.53	238.5			
09/21/2012	10:42:30	134	6.2	8.53	241.6			
09/21/2012	10:43:00	120	6.4	8.53	244.8			
09/21/2012	10:43:30	196	6.2	8.53	247.9			
09/21/2012	10:44:00	176	6.4	8.53	251.1			
09/21/2012	10:44:30	132	6.4	8.53	254.2			
09/21/2012	10:45:00	166	6.4	8.53	257.4			
09/21/2012	10:45:30	111	6.2	8.53	260.6			
09/21/2012	10:46:00	26	6.4	8.53	263.7			
09/21/2012	10:46:30	28	6.2	8.53	266.9			
09/21/2012	10:47:00	28	6.4	8.53	270.0			

Well			Field		Job Start	Customer		Job Number	
SG 8515 D-25			STORY GULCH		Sep/21/2012	ENCANA		C610-00566	
Date	Time 24-hr clock	Treating Pressure PSI	Flow Rate B/M	Density LB/G	Volume BBL	Message			
09/21/2012	10:48:00	29	6.4	8.53	276.3				
09/21/2012	10:48:30	68	4.5	9.14	279.2				
09/21/2012	10:49:00	198	6.4	9.22	282.2				
09/21/2012	10:49:30	191	6.4	9.16	285.4				
09/21/2012	10:50:00	205	6.4	8.95	288.6				
09/21/2012	10:50:30	203	6.4	8.71	291.8				
09/21/2012	10:51:00	202	6.4	8.53	295.0				
09/21/2012	10:51:30	177	6.4	8.52	298.2				
09/21/2012	10:52:00	205	6.4	8.53	301.4				
09/21/2012	10:52:30	188	6.4	8.52	304.6				
09/21/2012	10:53:00	216	6.5	9.65	307.8				
09/21/2012	10:53:30	111	2.7	10.01	310.0				
09/21/2012	10:54:00	271	6.3	10.04	312.8				
09/21/2012	10:54:30	274	6.4	10.04	315.9				
09/21/2012	10:55:00	264	6.4	10.04	319.1				
09/21/2012	10:55:30	277	6.4	10.04	322.3				
09/21/2012	10:56:00	306	6.4	10.05	325.5				
09/21/2012	10:56:30	255	6.4	10.05	328.7				
09/21/2012	10:57:00	281	6.3	10.08	331.9				
09/21/2012	10:57:30	23	0.0	25.00	332.3				
09/21/2012	10:58:00	21	2.7	8.57	333.1				
09/21/2012	10:58:30	19	2.7	8.53	334.4				
09/21/2012	10:59:00	122	4.9	8.52	335.9				
09/21/2012	10:59:30	180	6.4	8.53	338.9				
09/21/2012	11:00:00	185	6.4	8.53	342.1				
09/21/2012	11:00:30	120	6.9	8.92	345.2				
09/21/2012	11:01:00	169	6.9	8.96	348.7				
09/21/2012	11:01:30	95	6.9	8.98	352.2				
09/21/2012	11:02:00	182	6.8	9.01	355.6				
09/21/2012	11:02:30	72	6.9	9.01	359.0				
09/21/2012	11:03:00	149	6.8	9.04	362.4				
09/21/2012	11:03:30	85	6.8	9.05	365.8				
09/21/2012	11:04:00	77	6.8	9.08	369.2				
09/21/2012	11:04:30	70	6.7	9.12	372.5				
09/21/2012	11:05:00	81	6.8	9.12	375.6				
09/21/2012	11:05:30	208	6.8	9.07	379.0				
09/21/2012	11:06:00	82	6.7	9.03	382.4				
09/21/2012	11:06:30	138	6.8	9.05	385.7				
09/21/2012	11:07:00	173	7.1	9.09	389.2				
09/21/2012	11:07:30	267	7.3	9.23	392.8				
09/21/2012	11:08:00	348	7.5	9.18	396.5				
09/21/2012	11:08:30	384	7.6	9.28	400.3				
09/21/2012	11:09:00	410	7.7	9.37	404.1				
09/21/2012	11:09:26					Start Cement Slurry			
09/21/2012	11:09:26	433	7.7	9.36	407.5				
09/21/2012	11:09:27					567bbls 9ppg			
09/21/2012	11:09:27					Take WetDry Sample			
09/21/2012	11:09:27					Sample= 9ppg			
09/21/2012	11:09:27					Sample # =14117			
09/21/2012	11:09:27	391	7.8	9.36	407.6				
09/21/2012	11:09:30	416	7.7	9.36	408.0				
09/21/2012	11:10:00	411	7.8	9.34	411.9				
09/21/2012	11:10:30	437	7.8	9.34	415.8				
09/21/2012	11:11:00	414	7.8	9.36	419.7				

Well			Field		Job Start		Customer		Job Number	
SG 8515 D-25			STORY GULCH		Sep/21/2012		ENCANA		C610-00566	
Date	Time 24-hr clock	Treating Pressure PSI	Flow Rate B/M	Density LB/G	Volume BBL	Message				
09/21/2012	11:12:00	421	7.9	9.36	427.5					
09/21/2012	11:12:30	421	7.8	9.36	431.4					
09/21/2012	11:13:00	434	7.8	9.36	435.4					
09/21/2012	11:13:30	437	7.8	9.36	439.3					
09/21/2012	11:14:00	448	7.9	9.36	443.2					
09/21/2012	11:14:30	433	7.8	9.36	447.1					
09/21/2012	11:15:00	467	7.8	9.35	451.1					
09/21/2012	11:15:30	478	7.9	9.34	455.0					
09/21/2012	11:16:00	470	7.8	9.35	458.9					
09/21/2012	11:16:30	470	7.8	9.36	462.8					
09/21/2012	11:17:00	472	7.8	9.38	466.7					
09/21/2012	11:17:30	464	7.9	9.39	470.6					
09/21/2012	11:18:00	494	7.8	9.38	474.6					
09/21/2012	11:18:30	522	7.8	9.37	478.5					
09/21/2012	11:19:00	512	7.8	9.38	482.4					
09/21/2012	11:19:30	511	7.8	9.39	486.3					
09/21/2012	11:20:00	490	7.8	9.39	490.2					
09/21/2012	11:20:30	494	7.8	9.38	494.1					
09/21/2012	11:21:00	469	7.8	9.38	498.0					
09/21/2012	11:21:30	493	7.8	9.36	502.0					
09/21/2012	11:22:00	500	7.8	9.37	505.9					
09/21/2012	11:22:30	481	7.8	9.38	509.8					
09/21/2012	11:23:00	470	7.8	9.39	513.7					
09/21/2012	11:23:30	472	7.8	9.41	517.6					
09/21/2012	11:24:00	459	7.9	9.43	521.5					
09/21/2012	11:24:30	470	7.8	9.44	525.4					
09/21/2012	11:25:00	493	7.8	9.43	529.4					
09/21/2012	11:25:30	483	7.8	9.44	533.3					
09/21/2012	11:26:00	451	7.9	9.43	537.2					
09/21/2012	11:26:30	456	7.9	9.42	541.1					
09/21/2012	11:27:00	447	7.8	9.38	545.1					
09/21/2012	11:27:30	481	7.8	9.36	549.0					
09/21/2012	11:28:00	480	7.8	9.35	552.9					
09/21/2012	11:28:30	497	7.8	9.35	556.8					
09/21/2012	11:29:00	483	7.8	9.34	560.7					
09/21/2012	11:29:30	508	7.8	9.35	564.6					
09/21/2012	11:30:00	512	7.8	9.36	568.5					
09/21/2012	11:30:30	493	7.8	9.38	572.4					
09/21/2012	11:31:00	476	7.8	9.39	576.4					
09/21/2012	11:31:30	481	7.8	9.39	580.3					
09/21/2012	11:32:00	468	7.8	9.40	584.2					
09/21/2012	11:32:30	475	7.8	9.40	588.1					
09/21/2012	11:33:00	466	7.8	9.40	592.0					
09/21/2012	11:33:30	460	7.8	9.42	595.9					
09/21/2012	11:34:00	474	7.8	9.42	599.8					
09/21/2012	11:34:30	490	7.8	9.42	603.8					
09/21/2012	11:35:30	504	7.8	9.43	611.6					
09/21/2012	11:36:00	506	7.8	9.42	615.5					
09/21/2012	11:36:30	514	7.8	9.42	619.4					
09/21/2012	11:37:00	517	7.8	9.42	623.3					
09/21/2012	11:37:30	512	7.8	9.42	627.2					
09/21/2012	11:38:00	516	7.8	9.42	631.1					
09/21/2012	11:38:30	511	7.8	9.41	635.0					
09/21/2012	11:39:00	505	7.8	9.40	639.0					

Well			Field		Job Start		Customer		Job Number	
SG 8515 D-25			STORY GULCH		Sep/21/2012		ENCANA		C610-00566	
Date	Time 24-hr clock	Treating Pressure PSI	Flow Rate B/M	Density LB/G	Volume BBL	Message				
09/21/2012	11:40:00	500	7.8	9.36	646.8					
09/21/2012	11:40:30	503	7.8	9.36	650.7					
09/21/2012	11:41:00	504	7.8	9.36	654.6					
09/21/2012	11:41:30	513	7.8	9.36	658.5					
09/21/2012	11:42:00	513	7.8	9.35	662.4					
09/21/2012	11:42:30	510	7.8	9.35	666.3					
09/21/2012	11:43:00	516	7.8	9.35	670.2					
09/21/2012	11:43:30	507	7.8	9.34	674.1					
09/21/2012	11:44:00	472	7.8	9.31	678.0					
09/21/2012	11:44:30	474	7.8	9.32	681.9					
09/21/2012	11:45:00	494	7.8	9.34	685.9					
09/21/2012	11:45:30	497	7.8	9.36	689.8					
09/21/2012	11:46:00	484	7.8	9.36	693.7					
09/21/2012	11:46:30	491	7.8	9.37	697.6					
09/21/2012	11:47:00	491	7.8	9.37	701.5					
09/21/2012	11:47:30	500	7.8	9.37	705.4					
09/21/2012	11:48:00	493	7.8	9.38	709.3					
09/21/2012	11:48:30	491	7.8	9.38	713.2					
09/21/2012	11:49:00	502	7.8	9.38	717.1					
09/21/2012	11:49:30	495	7.8	9.38	721.0					
09/21/2012	11:50:00	497	7.8	9.39	725.0					
09/21/2012	11:50:30	505	7.8	9.39	728.9					
09/21/2012	11:51:00	498	7.8	9.39	732.8					
09/21/2012	11:51:30	502	7.8	9.39	736.7					
09/21/2012	11:52:00	504	7.8	9.40	740.6					
09/21/2012	11:52:30	504	7.8	9.40	744.5					
09/21/2012	11:53:00	521	7.8	9.40	748.4					
09/21/2012	11:53:30	507	7.8	9.40	752.3					
09/21/2012	11:54:00	515	7.8	9.41	756.2					
09/21/2012	11:54:30	523	7.8	9.41	760.1					
09/21/2012	11:55:00	513	7.8	9.41	764.0					
09/21/2012	11:55:30	524	7.8	9.40	768.0					
09/21/2012	11:56:00	530	7.8	9.41	771.9					
09/21/2012	11:56:30	514	7.8	9.40	775.8					
09/21/2012	11:57:00	516	7.8	9.40	779.7					
09/21/2012	11:57:30	521	7.8	9.41	783.6					
09/21/2012	11:58:00	523	7.8	9.41	787.5					
09/21/2012	11:58:30	520	7.8	9.41	791.4					
09/21/2012	11:59:00	524	7.8	9.41	795.3					
09/21/2012	11:59:30	503	7.8	9.42	799.2					
09/21/2012	12:00:00	522	7.8	9.43	803.2					
09/21/2012	12:00:30	515	7.8	9.43	807.1					
09/21/2012	12:01:00	506	7.8	9.44	811.0					
09/21/2012	12:01:30	514	7.9	9.45	814.9					
09/21/2012	12:02:00	491	7.8	9.43	818.8					
09/21/2012	12:02:30	479	7.8	9.42	822.7					
09/21/2012	12:03:00	488	7.8	9.43	826.6					
09/21/2012	12:03:30	496	7.8	9.43	830.5					
09/21/2012	12:04:00	487	7.8	9.42	834.5					
09/21/2012	12:04:30	480	7.8	9.41	838.4					
09/21/2012	12:05:00	493	7.8	9.41	842.3					
09/21/2012	12:05:30	492	7.8	9.41	846.2					
09/21/2012	12:06:00	492	7.8	9.41	850.1					
09/21/2012	12:06:30	482	7.8	9.41	854.0					

Well			Field		Job Start		Customer		Job Number	
SG 8515 D-25			STORY GULCH		Sep/21/2012		ENCANA		C610-00566	
Date	Time 24-hr clock	Treating Pressure PSI	Flow Rate B/M	Density LB/G	Volume BBL	Message				
09/21/2012	12:07:30	485	7.8	9.42	861.8					
09/21/2012	12:08:00	501	7.8	9.42	865.7					
09/21/2012	12:08:30	483	7.8	9.42	869.6					
09/21/2012	12:09:00	497	7.8	9.42	873.5					
09/21/2012	12:09:30	485	7.8	9.42	877.4					
09/21/2012	12:10:00	498	7.8	9.42	881.3					
09/21/2012	12:10:30	487	7.8	9.42	885.2					
09/21/2012	12:11:00	492	7.8	9.41	889.1					
09/21/2012	12:11:30	489	7.8	9.41	893.0					
09/21/2012	12:12:00	485	7.8	9.41	896.9					
09/21/2012	12:12:30	492	7.8	9.40	900.8					
09/21/2012	12:13:00	483	7.8	9.40	904.7					
09/21/2012	12:13:30	486	7.8	9.40	908.6					
09/21/2012	12:14:00	484	7.8	9.40	912.5					
09/21/2012	12:14:30	496	7.8	9.39	916.4					
09/21/2012	12:15:00	477	7.8	9.39	920.3					
09/21/2012	12:15:30	491	7.8	9.40	924.3					
09/21/2012	12:16:00	488	7.8	9.41	928.2					
09/21/2012	12:16:30	502	7.8	9.42	932.1					
09/21/2012	12:16:44					280bbls Cement				
09/21/2012	12:16:44					To Surface				
09/21/2012	12:16:44	488	7.8	9.42	933.9					
09/21/2012	12:17:00					End Cement Slurry				
09/21/2012	12:17:00	490	7.8	9.43	936.0					
09/21/2012	12:17:05					Drop Top Plug				
09/21/2012	12:17:05	492	7.8	9.43	936.6					
09/21/2012	12:17:15					On The Fly				
09/21/2012	12:17:15	494	7.8	9.43	937.9					
09/21/2012	12:17:30	497	7.8	9.44	939.9					
09/21/2012	12:18:00	498	7.8	9.46	943.8					
09/21/2012	12:18:30	510	7.8	9.48	947.7					
09/21/2012	12:19:00	500	7.8	9.50	951.6					
09/21/2012	12:19:30	514	7.8	9.52	955.5					
09/21/2012	12:20:00	497	7.8	9.53	959.4					
09/21/2012	12:20:30	47	1.5	9.56	962.0					
09/21/2012	12:21:00	135	3.4	9.55	963.4					
09/21/2012	12:21:30	165	3.3	9.60	965.1					
09/21/2012	12:22:00	112	3.4	9.63	966.7					
09/21/2012	12:22:30	115	3.4	9.57	968.4					
09/21/2012	12:23:00	177	3.4	9.69	970.1					
09/21/2012	12:23:30	89	3.4	8.72	971.8					
09/21/2012	12:24:00	175	5.0	8.75	973.9					
09/21/2012	12:24:30	148	5.1	8.79	976.4					
09/21/2012	12:25:00	148	5.0	8.69	978.9					
09/21/2012	12:25:30	230	5.6	8.64	981.4					
09/21/2012	12:26:00	228	6.4	8.63	984.6					
09/21/2012	12:26:30	345	7.9	8.61	988.0					
09/21/2012	12:26:47					Start Displacement				
09/21/2012	12:26:47	356	7.9	8.60	990.3					
09/21/2012	12:26:48					230bbls Fresh H2o				
09/21/2012	12:26:48	342	7.9	8.60	990.4					
09/21/2012	12:26:49					Good Returns				
09/21/2012	12:26:49	356	7.9	8.60	990.5					
09/21/2012	12:27:00	361	7.9	8.60	992.0					

Well			Field		Job Start	Customer		Job Number
SG 8515 D-25			STORY GULCH		Sep/21/2012	ENCANA		C610-00566
Date	Time 24-hr clock	Treating Pressure PSI	Flow Rate B/M	Density LB/G	Volume BBL	Message		
09/21/2012	12:27:24	356	7.9	8.58	995.1			
09/21/2012	12:27:30	373	7.9	8.58	995.9			
09/21/2012	12:28:00	375	7.9	8.57	999.8			
09/21/2012	12:28:30	399	7.9	8.57	1003.8			
09/21/2012	12:29:00	411	7.9	8.54	1007.7			
09/21/2012	12:29:30	402	7.9	8.53	1011.6			
09/21/2012	12:30:00	33	0.0	8.56	1013.7			
09/21/2012	12:30:30	293	5.4	8.58	1015.1			
09/21/2012	12:31:00	444	7.9	8.29	1018.4			
09/21/2012	12:31:30	399	7.9	8.45	1022.3			
09/21/2012	12:32:00	435	7.9	8.48	1026.3			
09/21/2012	12:32:30	423	7.9	8.49	1030.2			
09/21/2012	12:33:00	431	7.8	8.53	1034.2			
09/21/2012	12:33:30	443	7.9	8.55	1038.1			
09/21/2012	12:34:00	440	7.8	8.55	1042.0			
09/21/2012	12:34:30	447	7.8	8.55	1045.9			
09/21/2012	12:35:00	446	7.8	8.55	1049.8			
09/21/2012	12:35:30	455	7.8	8.55	1053.7			
09/21/2012	12:36:00	442	7.8	8.55	1057.6			
09/21/2012	12:36:30	457	7.8	8.55	1061.5			
09/21/2012	12:37:00	455	7.8	8.55	1065.4			
09/21/2012	12:37:30	457	7.8	8.55	1069.3			
09/21/2012	12:38:00	465	7.8	8.55	1073.2			
09/21/2012	12:38:30	464	7.8	8.55	1077.1			
09/21/2012	12:39:00	462	7.8	8.55	1080.9			
09/21/2012	12:39:30	464	7.8	8.55	1084.8			
09/21/2012	12:40:00	468	7.8	8.55	1088.7			
09/21/2012	12:40:30	462	7.8	8.55	1092.6			
09/21/2012	12:41:00	465	7.8	8.55	1096.5			
09/21/2012	12:41:30	468	7.8	8.55	1100.4			
09/21/2012	12:42:00	463	7.8	8.55	1104.3			
09/21/2012	12:42:30	472	7.8	8.55	1108.2			
09/21/2012	12:43:00	466	7.8	8.55	1112.1			
09/21/2012	12:43:30	477	7.8	8.55	1116.0			
09/21/2012	12:44:00	474	7.8	8.55	1119.9			
09/21/2012	12:44:30	487	7.8	8.55	1123.8			
09/21/2012	12:45:00	483	7.8	8.55	1127.6			
09/21/2012	12:45:30	484	7.8	8.55	1131.5			
09/21/2012	12:46:00	490	7.8	8.55	1135.4			
09/21/2012	12:46:30	490	7.8	8.55	1139.3			
09/21/2012	12:47:00	503	7.8	8.55	1143.2			
09/21/2012	12:47:30	497	7.8	8.55	1147.1			
09/21/2012	12:48:00	503	7.8	8.55	1151.0			
09/21/2012	12:48:30	511	7.8	8.55	1154.9			
09/21/2012	12:49:00	513	7.8	8.55	1158.8			
09/21/2012	12:49:30	522	7.8	8.55	1162.7			
09/21/2012	12:50:00	526	7.8	8.55	1166.6			
09/21/2012	12:50:30	534	7.8	8.55	1170.5			
09/21/2012	12:51:00	527	7.8	8.55	1174.3			
09/21/2012	12:52:00	338	5.1	8.55	1181.8			
09/21/2012	12:52:30	392	5.0	8.55	1184.2			
09/21/2012	12:53:00	397	5.0	8.55	1186.7			
09/21/2012	12:53:30	348	5.0	8.55	1189.2			
09/21/2012	12:54:00	354	5.0	8.55	1191.7			

Well			Field		Job Start	Customer		Job Number	
SG 8515 D-25			STORY GULCH		Sep/21/2012	ENCANA		C610-00566	
Date	Time 24-hr clock	Treating Pressure PSI	Flow Rate B/M	Density LB/G	Volume BBL	Message			
09/21/2012	12:55:00	305	3.5	8.55	1196.4				
09/21/2012	12:55:30	256	2.5	8.55	1198.0				
09/21/2012	12:56:00	249	2.5	8.55	1199.2				
09/21/2012	12:56:30	252	2.5	8.55	1200.5				
09/21/2012	12:57:00	301	2.5	8.55	1201.7				
09/21/2012	12:57:30	900	0.0	8.55	1202.5				
09/21/2012	12:57:32					Bump Top Plug			
09/21/2012	12:57:32	898	0.0	8.55	1202.5				
09/21/2012	12:57:43					Bump To 900psi			
09/21/2012	12:57:43	904	0.0	8.55	1202.5				
09/21/2012	12:58:00	902	0.0	8.55	1202.5				
09/21/2012	12:58:30	900	0.0	8.55	1202.5				
09/21/2012	12:59:00	898	0.0	8.55	1202.5				
09/21/2012	12:59:30	898	0.0	8.55	1202.5				
09/21/2012	13:00:00	897	0.0	8.55	1202.5				
09/21/2012	13:00:30	897	0.0	8.55	1202.5				
09/21/2012	13:01:00	897	0.0	8.55	1202.5				
09/21/2012	13:01:30	897	0.0	8.55	1202.5				
09/21/2012	13:02:00	897	0.0	8.55	1202.5				
09/21/2012	13:02:30	898	0.0	8.55	1202.5				
09/21/2012	13:03:00	898	0.0	8.55	1202.5				
09/21/2012	13:03:30	898	0.0	8.55	1202.5				
09/21/2012	13:04:00	899	0.0	8.55	1202.5				
09/21/2012	13:04:30	899	0.0	8.55	1202.5				
09/21/2012	13:05:00	899	0.0	8.55	1202.5				
09/21/2012	13:05:30	900	0.0	8.55	1202.5				
09/21/2012	13:06:00	900	0.0	8.55	1202.5				
09/21/2012	13:06:30	901	0.0	8.55	1202.5				
09/21/2012	13:07:00	901	0.0	8.55	1202.5				
09/21/2012	13:07:30	902	0.0	8.55	1202.5				
09/21/2012	13:08:00	377	0.0	8.55	1202.5				
09/21/2012	13:08:08					Floats Held			
09/21/2012	13:08:08	119	0.0	8.55	1202.5				
09/21/2012	13:08:30	-13	0.0	8.55	1202.5				
09/21/2012	13:09:00					Wait For Parasite			
09/21/2012	13:09:00	-13	0.0	8.55	1202.5				
09/21/2012	13:09:30	-14	0.0	8.55	1202.5				
09/21/2012	13:10:00	-14	0.0	8.55	1202.5				
09/21/2012	13:10:30	-13	0.0	8.55	1202.5				
09/21/2012	13:11:00	-22	0.0	8.55	1202.5				
09/21/2012	13:11:30	-21	0.0	8.55	1202.5				
09/21/2012	13:12:00	-22	0.0	8.55	1202.5				
09/21/2012	13:12:30	-23	0.0	8.55	1202.5				
09/21/2012	13:13:00	-22	0.0	8.55	1202.5				
09/21/2012	13:13:30	-26	0.0	8.55	1202.5				
09/21/2012	13:14:00	-22	0.0	8.55	1202.5				
09/21/2012	13:14:30	-22	0.0	8.55	1202.5				
09/21/2012	13:15:00	-22	0.0	8.55	1202.5				
09/21/2012	13:15:30	-24	0.0	8.55	1202.5				
09/21/2012	13:16:00	-24	0.0	8.55	1202.5				
09/21/2012	13:16:30	-13	0.0	8.55	1202.5				
09/21/2012	13:17:00	-12	0.0	8.55	1202.5				
09/21/2012	13:17:30	-13	0.0	8.55	1202.5				
09/21/2012	13:18:00	-13	0.0	8.55	1202.5				

Well			Field		Job Start	Customer		Job Number
SG 8515 D-25			STORY GULCH		Sep/21/2012	ENCANA		C610-00566
Date	Time 24-hr clock	Treating Pressure PSI	Flow Rate B/M	Density LB/G	Volume BBL	Message		
09/21/2012	13:19:00	-14	0.0	8.55	1202.5			
09/21/2012	13:19:30	26	2.2	8.57	1203.0			
09/21/2012	13:20:00	42	2.7	8.56	1204.3			
09/21/2012	13:20:30	41	2.5	8.56	1205.6			
09/21/2012	13:21:00	45	2.6	8.56	1206.9			
09/21/2012	13:21:30	86	3.3	8.56	1208.4			
09/21/2012	13:22:00	124	3.4	8.56	1210.0			
09/21/2012	13:22:30	383	6.9	8.57	1212.8			
09/21/2012	13:23:00	378	6.9	8.56	1216.2			
09/21/2012	13:23:30	367	6.9	8.56	1219.7			
09/21/2012	13:24:00	489	7.9	8.55	1223.4			
09/21/2012	13:24:30	485	7.9	8.54	1227.4			
09/21/2012	13:25:00	491	7.8	8.54	1231.3			
09/21/2012	13:25:30	489	7.9	8.54	1235.2			
09/21/2012	13:26:00	493	7.9	8.54	1239.2			
09/21/2012	13:26:30	487	7.9	8.54	1243.1			
09/21/2012	13:27:00	479	7.8	8.54	1247.0			
09/21/2012	13:27:30	517	0.0	8.52	1249.1			
09/21/2012	13:28:00	407	7.7	8.55	1251.4			
09/21/2012	13:28:30	476	7.7	8.54	1255.3			
09/21/2012	13:29:00	492	7.7	8.54	1259.1			
09/21/2012	13:29:30	491	7.7	8.42	1263.0			
09/21/2012	13:30:00	483	7.7	8.54	1266.9			
09/21/2012	13:30:30	481	7.7	8.54	1270.7			
09/21/2012	13:31:00	480	7.7	8.54	1274.6			
09/21/2012	13:31:30	0	2.3	8.54	1278.0			
09/21/2012	13:32:00	1	0.0	8.54	1278.1			
09/21/2012	13:32:30	1	0.0	8.54	1278.1			
09/21/2012	13:33:00	1	0.0	8.54	1278.1			
09/21/2012	13:33:30	1	0.0	8.54	1278.1			
09/21/2012	13:34:00	1	0.0	8.54	1278.1			
09/21/2012	13:34:30	1	0.0	8.54	1278.1			
09/21/2012	13:35:00	1	0.0	8.54	1278.1			
09/21/2012	13:35:30	1	0.0	8.54	1278.1			
09/21/2012	13:36:00	1	0.0	8.54	1278.1			
09/21/2012	13:36:30	1	0.0	8.54	1278.1			
09/21/2012	13:37:00	1	0.0	8.54	1278.1			
09/21/2012	13:37:30	1	0.0	8.54	1278.1			
09/21/2012	13:38:00	1	0.0	8.54	1278.1			
09/21/2012	13:38:30	1	0.0	8.54	1278.1			
09/21/2012	13:39:00	1	0.0	8.54	1278.1			
09/21/2012	13:39:30	1	0.0	8.54	1278.1			
09/21/2012	13:40:00	1	0.0	8.54	1278.1			
09/21/2012	13:40:30	1	0.0	8.54	1278.1			
09/21/2012	13:41:00	1	0.0	8.54	1278.1			
09/21/2012	13:41:30	1	0.0	8.54	1278.1			
09/21/2012	13:42:00	1	0.0	8.54	1278.1			
09/21/2012	13:42:30	1	0.0	8.54	1278.1			
09/21/2012	13:43:00	1	0.0	8.54	1278.1			
09/21/2012	13:43:30	1	0.0	8.54	1278.1			
09/21/2012	13:44:00	1	0.0	8.54	1278.1			
09/21/2012	13:44:30	1	0.0	8.54	1278.1			
09/21/2012	13:45:00	1	0.0	8.54	1278.1			
09/21/2012	13:45:30	1	0.0	8.54	1278.1			

Well			Field		Job Start	Customer		Job Number
SG 8515 D-25			STORY GULCH		Sep/21/2012	ENCANA		C610-00566
Date	Time 24-hr clock	Treating Pressure PSI	Flow Rate B/M	Density LB/G	Volume BBL	Message		
09/21/2012	13:46:30	1	0.0	8.54	1278.1			
09/21/2012	13:47:00	1	0.0	8.54	1278.1			
09/21/2012	13:47:30	1	0.0	8.54	1278.1			
09/21/2012	13:48:00	1	0.0	8.54	1278.1			
09/21/2012	13:48:30	1	0.0	8.54	1278.1			
09/21/2012	13:49:00	1	0.0	8.54	1278.1			
09/21/2012	13:49:30	1	0.0	8.54	1278.1			
09/21/2012	13:50:00	2	0.0	8.54	1278.1			
09/21/2012	13:50:30	1	0.0	8.54	1278.1			
09/21/2012	13:51:00	1	0.0	8.54	1278.1			
09/21/2012	13:51:30	2	0.0	8.54	1278.1			
09/21/2012	13:52:00	1	0.0	8.54	1278.1			
09/21/2012	13:52:30	1	0.0	8.54	1278.1			
09/21/2012	13:53:00	1	0.0	8.54	1278.1			
09/21/2012	13:53:30	2	0.0	8.54	1278.1			
09/21/2012	13:54:00	1	0.0	8.54	1278.1			
09/21/2012	13:54:30	1	0.0	8.54	1278.1			
09/21/2012	13:55:00	1	0.0	8.54	1278.1			
09/21/2012	13:55:30	1	0.0	8.54	1278.1			
09/21/2012	13:56:00	2	0.0	8.54	1278.1			
09/21/2012	13:56:30	1	0.0	8.54	1278.1			
09/21/2012	13:57:00	2	0.0	8.54	1278.1			
09/21/2012	13:57:30	2	0.0	8.54	1278.1			
09/21/2012	13:58:00	1	0.0	8.54	1278.1			
09/21/2012	13:58:30	1	0.0	8.54	1278.1			
09/21/2012	13:59:00	2	0.0	8.54	1278.1			
09/21/2012	13:59:30	2	0.0	8.54	1278.1			
09/21/2012	14:00:00	2	0.0	8.54	1278.1			
09/21/2012	14:00:30	2	0.0	8.54	1278.1			
09/21/2012	14:01:00	2	0.0	8.54	1278.1			
09/21/2012	14:01:30	2	0.0	8.54	1278.1			
09/21/2012	14:02:00	2	0.0	8.54	1278.1			
09/21/2012	14:02:30	2	0.0	8.54	1278.1			
09/21/2012	14:03:00	2	0.0	8.54	1278.1			
09/21/2012	14:03:30	2	0.0	8.54	1278.1			
09/21/2012	14:04:00	2	0.0	8.54	1278.1			
09/21/2012	14:04:30	2	0.0	8.54	1278.1			
09/21/2012	14:05:00	2	0.0	8.54	1278.1			
09/21/2012	14:05:30	2	0.0	8.54	1278.1			
09/21/2012	14:06:00	2	0.0	8.54	1278.1			
09/21/2012	14:06:30	2	0.0	8.54	1278.1			
09/21/2012	14:07:00	2	0.0	8.54	1278.1			
09/21/2012	14:07:30	2	0.0	8.54	1278.1			
09/21/2012	14:08:00	2	0.0	8.54	1278.1			
09/21/2012	14:08:30	2	0.0	8.54	1278.1			
09/21/2012	14:09:00	2	0.0	8.54	1278.1			
09/21/2012	14:09:30	2	0.0	8.54	1278.1			
09/21/2012	14:10:00	2	0.0	8.54	1278.1			
09/21/2012	14:10:30	3	0.0	8.54	1278.1			
09/21/2012	14:11:00	2	0.0	8.54	1278.1			
09/21/2012	14:11:30	2	0.0	8.54	1278.1			
09/21/2012	14:12:00	3	0.0	8.54	1278.1			
09/21/2012	14:12:30	2	0.0	8.54	1278.1			
09/21/2012	14:13:00	2	0.0	8.54	1278.1			

Well			Field		Job Start	Customer		Job Number
SG 8515 D-25			STORY GULCH		Sep/21/2012	ENCANA		C610-00566
Date	Time 24-hr clock	Treating Pressure PSI	Flow Rate B/M	Density LB/G	Volume BBL	Message		
09/21/2012	14:14:00	2	0.0	8.54	1278.1			
09/21/2012	14:14:30	2	0.0	8.54	1278.1			
09/21/2012	14:15:00	2	0.0	8.54	1278.1			
09/21/2012	14:15:30	2	0.0	8.54	1278.1			
09/21/2012	14:16:00	2	0.0	8.54	1278.1			
09/21/2012	14:16:30	2	0.0	8.54	1278.1			
09/21/2012	14:17:00	2	0.0	8.54	1278.1			
09/21/2012	14:17:30	2	0.0	8.54	1278.1			
09/21/2012	14:18:00	2	0.0	8.54	1278.1			
09/21/2012	14:18:30	2	0.0	8.54	1278.1			
09/21/2012	14:19:00	2	0.0	8.54	1278.1			
09/21/2012	14:19:30	2	0.0	8.54	1278.1			
09/21/2012	14:20:00	2	0.0	8.54	1278.1			
09/21/2012	14:20:30	2	0.0	8.54	1278.1			
09/21/2012	14:21:00	2	0.0	8.54	1278.1			
09/21/2012	14:21:30	2	0.0	8.54	1278.1			
09/21/2012	14:22:00	2	0.0	8.54	1278.1			
09/21/2012	14:22:30	2	0.0	8.54	1278.1			
09/21/2012	14:23:00	2	0.0	8.54	1278.1			
09/21/2012	14:23:30	43	2.1	8.44	1278.1			
09/21/2012	14:24:00	163	4.5	8.57	1279.7			
09/21/2012	14:24:30	1234	6.3	8.57	1282.7			
09/21/2012	14:25:00	929	4.8	8.57	1285.0			
09/21/2012	14:25:30	1485	4.8	8.58	1287.1			
09/21/2012	14:26:00	422	2.0	8.57	1288.2			
09/21/2012	14:26:30	2	0.0	8.58	1288.9			
09/21/2012	14:27:00	1	0.0	8.58	1288.9			
09/21/2012	14:27:30	11	0.0	8.57	1288.9			
09/21/2012	14:28:00	5842	0.3	8.56	1288.9			
09/21/2012	14:28:24					Pump 10bbbls Sugar		
09/21/2012	14:28:24	5749	0.0	8.55	1288.9			
09/21/2012	14:28:25					Water		
09/21/2012	14:28:25	5745	0.0	8.55	1288.9			
09/21/2012	14:28:26					End Job		
09/21/2012	14:28:26	5742	0.0	8.55	1288.9			
09/21/2012	14:28:30	5669	0.0	8.55	1288.9			
09/21/2012	14:29:00	-8	0.0	8.55	1288.9			
09/21/2012	14:29:30	71	4.7	7.70	1289.3			
09/21/2012	14:30:00	-9	0.0	7.41	1290.1			

Well SG 8515 D-25	Field STORY GULCH	Job Start Sep/21/2012	Customer ENCANA	Job Number C610-00566
-----------------------------	-----------------------------	---------------------------------	---------------------------	---------------------------------

Post Job Summary

Average Pump Rates, bbl/min					Volume of Fluid Injected, bbl			
Slurry 6.8	N2	Mud 0.0	Maximum Rate 9.0	Total Slurry 1288.9	Mud 0.0	Spacer 407.4	N2	
Treating Pressure Summary, psi					Breakdown Fluid			
Maximum 5854	Final -9	Average 326	Bump Plug to	Breakdown	Type	Volume	Density	
Avg. N2 Percent	Designed Slurry Volume 567.0 bbl		Displacement 266.0 bbl	Mix Water Temp 63 degF	Cement Circulated to Surface? <input checked="" type="checkbox"/>	Volume 280.0 bbl		
					Washed Thru Perfs <input type="checkbox"/>	To		
Customer or Authorized Representative ROBERT ESCAJEDA			Schlumberger Supervisor JASON CRICK			Circulation Lost <input type="checkbox"/>	Job Completed <input checked="" type="checkbox"/>	
					-		-	



Service Order #:	
Date:	Sep/21/2012
Operating Time:	0.0
Client Rep:	ENCANA
Schlumberger Engineer:	JASON CRICK
Schlumberger FSM:	

To be completed by Company Rep. Please answer Y (Yes) or N (No) and add any comments below.

4	Evaluation				
4a	Main job objective achieved with no consequential non-productive time	10	yes <input type="checkbox"/>	no <input checked="" type="checkbox"/>	0
Sub-total					0%

Comments: (Please include a brief explanation for a "NO" response and summarize any innovations attempted on this well.)

Client:	Schlumberger:
Client Signature:	Schlumberger Signature: