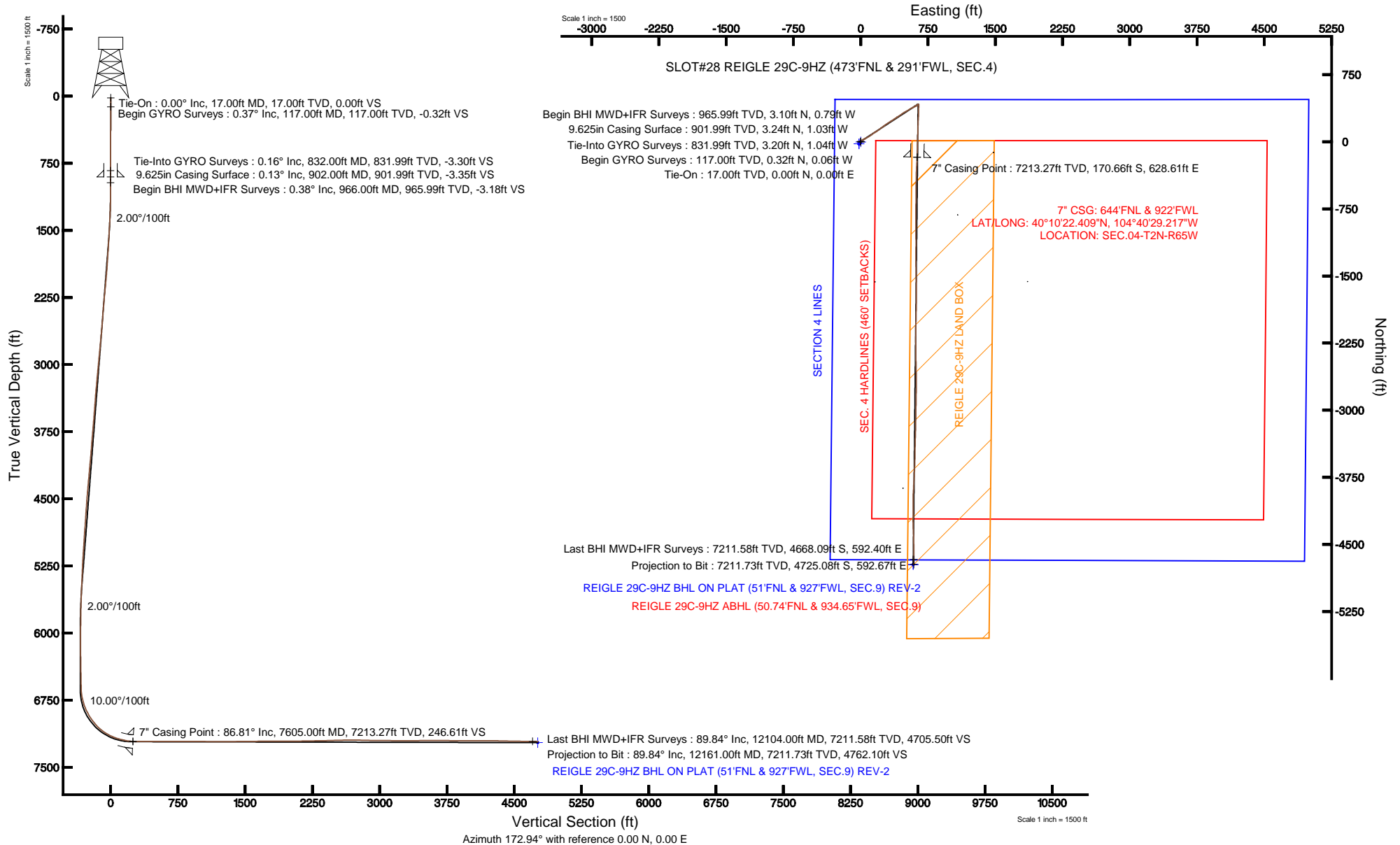


KERR-MCGEE OIL & GAS ONSHORE LP

Location: COLORADO Slot: SLOT#28 REIGLE 29C-9HZ (473'FNL & 291'FWL, SEC.4)
 Field: WELD COUNTY (KERR MCGEE) Well: REIGLE 29C-9HZ
 Facility: SEC.04-T2N-R65W Wellbore: REIGLE 29C-9HZ PWB

Plot reference wellpath is REIGLE 29C-9HZ (REV-C.0) PWP

True vertical depths are referenced to XTREME 6 (RKB)	Grid System: NAD83 / Lambert Colorado SP, Northern Zone (501), US feet
Measured depths are referenced to XTREME 6 (RKB)	North Reference: True north
XTREME 6 (RKB) to Mean Sea Level: 4886 feet	Scale: True distance
Mean Sea Level to Mud line (At Slot: SLOT#28 REIGLE 29C-9HZ (473'FNL & 291'FWL, SEC.4)): 0 feet	Depths are in feet
Coordinates are in feet referenced to Slot	Created by: wilsjef02 on 2/22/2013





Actual Wellpath Report

REIGLE 29C-9HZ AWP

Page 1 of 7



REFERENCE WELLPATH IDENTIFICATION			
Operator	KERR-MCGEE OIL & GAS ONSHORE LP	Slot	SLOT#28 REIGLE 29C-9HZ (473'FNL & 291'FWL, SEC.4)
Area	COLORADO	Well	REIGLE 29C-9HZ
Field	WELD COUNTY (KERR MCGEE)	Wellbore	REIGLE 29C-9HZ AWB
Facility	SEC.04-T2N-R65W		

REPORT SETUP INFORMATION			
Projection System	NAD83 / Lambert Colorado SP, Northern Zone (501), US feet	Software System	WellArchitect® 3.0.2
North Reference	True	User	Wilsjef02
Scale	0.999958	Report Generated	2/22/2013 at 11:10:08
Convergence at slot	0.53° East	Database/Source file	WellArchitectDB/REIGLE_29C-9HZ_AWB.xml

WELLPATH LOCATION						
	Local coordinates		Grid coordinates		Geographic coordinates	
	North[ft]	East[ft]	Easting[US ft]	Northing[US ft]	Latitude	Longitude
Slot Location	1746.50	-2203.18	3229968.07	1307065.12	40°10'24.096"N	104°40'37.315"W
Facility Reference Pt			3232187.42	1305339.42	40°10'06.838"N	104°40'08.933"W
Field Reference Pt			3197771.84	1268891.29	40°04'09.600"N	104°47'36.000"W

WELLPATH DATUM			
Calculation method	Minimum curvature	XTREME 6 (RKB) to Facility Vertical Datum	4886.00ft
Horizontal Reference Pt	Slot	XTREME 6 (RKB) to Mean Sea Level	4886.00ft
Vertical Reference Pt	XTREME 6 (RKB)	XTREME 6 (RKB) to Mud Line at Slot (SLOT#28 REIGLE 29C-9HZ (473'FNL & 291'FWL, SEC.4))	4886.00ft
MD Reference Pt	XTREME 6 (RKB)	Section Origin	N 0.00, E 0.00 ft
Field Vertical Reference	Mean Sea Level	Section Azimuth	172.94°



Actual Wellpath Report

REIGLE 29C-9HZ AWP

Page 2 of 7



REFERENCE WELLPATH IDENTIFICATION			
Operator	KERR-MCGEE OIL & GAS ONSHORE LP	Slot	SLOT#28 REIGLE 29C-9HZ (473'FNL & 291'FWL, SEC.4)
Area	COLORADO	Well	REIGLE 29C-9HZ
Field	WELD COUNTY (KERR MCGEE)	Wellbore	REIGLE 29C-9HZ AWB
Facility	SEC.04-T2N-R65W		

WELLPATH DATA (157 stations) † = interpolated/extrapolated station										
MD [ft]	Inclination [°]	Azimuth [°]	TVD [ft]	Vert Sect [ft]	North [ft]	East [ft]	Latitude	Longitude	DLS [°/100ft]	Comments
0.00†	0.000	349.300	0.00	0.00	0.00	0.00	40°10'24.096"N	104°40'37.315"W	0.00	
17.00	0.000	349.300	17.00	0.00	0.00	0.00	40°10'24.096"N	104°40'37.315"W	0.00	Tie-On
117.00	0.370	349.300	117.00	-0.32	0.32	-0.06	40°10'24.099"N	104°40'37.316"W	0.37	Begin GYRO Surveys
217.00	0.440	354.900	217.00	-1.03	1.02	-0.15	40°10'24.106"N	104°40'37.317"W	0.08	
317.00	0.330	335.340	316.99	-1.69	1.66	-0.31	40°10'24.112"N	104°40'37.319"W	0.17	
417.00	0.440	323.070	416.99	-2.29	2.23	-0.66	40°10'24.118"N	104°40'37.323"W	0.14	
517.00	0.100	270.000	516.99	-2.64	2.54	-0.98	40°10'24.121"N	104°40'37.328"W	0.39	
617.00	0.280	1.650	616.99	-2.89	2.78	-1.06	40°10'24.123"N	104°40'37.329"W	0.30	
717.00	0.090	38.240	716.99	-3.19	3.09	-1.00	40°10'24.127"N	104°40'37.328"W	0.21	
817.00	0.080	297.640	816.99	-3.28	3.18	-1.01	40°10'24.127"N	104°40'37.328"W	0.13	
832.00	0.160	317.190	831.99	-3.30	3.20	-1.04	40°10'24.128"N	104°40'37.328"W	0.59	Tie-Into GYRO Surveys
966.00	0.380	121.990	965.99	-3.18	3.10	-0.79	40°10'24.127"N	104°40'37.325"W	0.40	Begin BHI MWD+IFR Surveys
1057.00	0.230	94.810	1056.99	-2.95	2.93	-0.35	40°10'24.125"N	104°40'37.320"W	0.22	
1147.00	1.420	52.740	1146.98	-3.47	3.59	0.72	40°10'24.131"N	104°40'37.306"W	1.40	
1239.00	2.830	50.120	1238.91	-5.28	5.73	3.37	40°10'24.153"N	104°40'37.272"W	1.54	
1330.00	4.410	46.660	1329.73	-8.57	9.58	7.64	40°10'24.191"N	104°40'37.217"W	1.75	
1421.00	5.750	49.510	1420.37	-13.15	14.94	13.65	40°10'24.244"N	104°40'37.139"W	1.50	
1510.00	6.990	56.570	1508.82	-18.01	20.82	21.56	40°10'24.302"N	104°40'37.037"W	1.65	
1595.00	7.880	60.010	1593.10	-22.58	26.58	30.92	40°10'24.359"N	104°40'36.917"W	1.17	
1680.00	9.440	62.240	1677.13	-27.31	32.74	42.14	40°10'24.420"N	104°40'36.772"W	1.88	
1766.00	10.460	61.660	1761.84	-32.64	39.73	55.25	40°10'24.489"N	104°40'36.603"W	1.19	
1851.00	10.210	61.900	1845.46	-38.14	46.94	68.69	40°10'24.560"N	104°40'36.430"W	0.30	
1936.00	11.080	58.800	1929.00	-44.19	54.72	82.32	40°10'24.637"N	104°40'36.255"W	1.22	
2021.00	10.770	58.780	2012.45	-50.78	63.07	96.10	40°10'24.719"N	104°40'36.077"W	0.36	
2106.00	11.390	53.850	2095.87	-58.11	72.13	109.67	40°10'24.809"N	104°40'35.902"W	1.33	
2191.00	10.880	52.050	2179.27	-66.31	82.02	122.77	40°10'24.907"N	104°40'35.733"W	0.73	
2276.00	10.270	52.600	2262.83	-74.26	91.56	135.11	40°10'25.001"N	104°40'35.574"W	0.73	
2362.00	10.440	58.050	2347.43	-81.41	100.33	147.82	40°10'25.088"N	104°40'35.411"W	1.16	
2447.00	10.420	57.680	2431.02	-87.93	108.52	160.85	40°10'25.168"N	104°40'35.243"W	0.08	
2532.00	9.920	59.270	2514.69	-94.16	116.37	173.64	40°10'25.246"N	104°40'35.078"W	0.67	
2617.00	10.380	55.550	2598.36	-100.62	124.44	186.24	40°10'25.326"N	104°40'34.916"W	0.94	
2703.00	10.960	53.370	2682.87	-108.22	133.70	199.19	40°10'25.417"N	104°40'34.749"W	0.82	
2788.00	10.590	51.550	2766.37	-116.27	143.38	211.79	40°10'25.513"N	104°40'34.587"W	0.59	
2873.00	10.770	53.740	2849.90	-124.22	152.94	224.32	40°10'25.607"N	104°40'34.425"W	0.52	
2958.00	10.860	53.050	2933.39	-132.08	162.45	237.12	40°10'25.701"N	104°40'34.260"W	0.19	
3043.00	11.010	54.370	3016.85	-139.96	171.99	250.12	40°10'25.796"N	104°40'34.093"W	0.34	
3129.00	10.860	54.110	3101.29	-147.79	181.52	263.35	40°10'25.890"N	104°40'33.922"W	0.18	
3214.00	10.490	54.080	3184.82	-155.39	190.76	276.11	40°10'25.981"N	104°40'33.758"W	0.44	
3299.00	10.650	53.550	3268.37	-162.98	199.96	288.69	40°10'26.072"N	104°40'33.596"W	0.22	
3384.00	10.660	58.030	3351.91	-170.14	208.79	301.68	40°10'26.159"N	104°40'33.429"W	0.97	
3469.00	9.980	56.790	3435.53	-176.70	216.99	314.51	40°10'26.240"N	104°40'33.263"W	0.84	
3554.00	10.070	59.850	3519.24	-182.86	224.75	327.10	40°10'26.317"N	104°40'33.101"W	0.64	
3640.00	10.740	57.290	3603.82	-189.28	232.86	340.34	40°10'26.397"N	104°40'32.931"W	0.95	
3725.00	10.310	55.600	3687.39	-196.20	241.44	353.28	40°10'26.482"N	104°40'32.764"W	0.62	
3808.00	11.030	57.160	3768.96	-203.07	249.94	366.08	40°10'26.566"N	104°40'32.599"W	0.93	



Actual Wellpath Report

REIGLE 29C-9HZ AWP

Page 3 of 7



REFERENCE WELLPATH IDENTIFICATION

Operator	KERR-MCGEE OIL & GAS ONSHORE LP	Slot	SLOT#28 REIGLE 29C-9HZ (473'FNL & 291'FWL, SEC.4)
Area	COLORADO	Well	REIGLE 29C-9HZ
Field	WELD COUNTY (KERR MCGEE)	Wellbore	REIGLE 29C-9HZ AWB
Facility	SEC.04-T2N-R65W		

WELLPATH DATA (157 stations)

MD [ft]	Inclination [°]	Azimuth [°]	TVD [ft]	Vert Sect [ft]	North [ft]	East [ft]	Latitude	Longitude	DLS [°/100ft]	Comments
3893.00	10.300	56.520	3852.49	-209.99	258.54	379.25	40°10'26.651"N	104°40'32.429"W	0.87	
3978.00	10.260	56.050	3936.12	-216.79	266.96	391.87	40°10'26.734"N	104°40'32.267"W	0.11	
4064.00	11.190	56.990	4020.62	-223.91	275.79	405.22	40°10'26.821"N	104°40'32.095"W	1.10	
4147.00	10.930	55.560	4102.08	-231.05	284.62	418.47	40°10'26.909"N	104°40'31.924"W	0.46	
4233.00	11.420	58.140	4186.45	-238.37	293.73	432.42	40°10'26.999"N	104°40'31.744"W	0.81	
4317.00	10.920	54.170	4268.86	-245.69	302.78	445.93	40°10'27.088"N	104°40'31.570"W	1.09	
4401.00	10.780	53.880	4351.36	-253.34	312.06	458.73	40°10'27.180"N	104°40'31.405"W	0.18	
4486.00	10.760	56.280	4434.86	-260.76	321.15	471.75	40°10'27.270"N	104°40'31.238"W	0.53	
4569.00	10.650	61.040	4516.42	-267.10	329.17	484.91	40°10'27.349"N	104°40'31.068"W	1.07	
4654.00	10.310	60.730	4600.00	-272.90	336.69	498.41	40°10'27.423"N	104°40'30.894"W	0.41	
4739.00	10.330	60.720	4683.62	-278.66	344.14	511.70	40°10'27.497"N	104°40'30.723"W	0.02	
4824.00	9.970	60.820	4767.29	-284.31	351.45	524.77	40°10'27.569"N	104°40'30.555"W	0.42	
4909.00	9.140	55.100	4851.12	-290.24	358.90	536.73	40°10'27.643"N	104°40'30.401"W	1.48	
4994.00	9.170	58.990	4935.03	-296.14	366.25	548.07	40°10'27.715"N	104°40'30.254"W	0.73	
5080.00	9.680	59.730	5019.87	-301.77	373.43	560.19	40°10'27.786"N	104°40'30.098"W	0.61	
5165.00	9.650	61.460	5103.67	-307.20	380.44	572.62	40°10'27.855"N	104°40'29.938"W	0.34	
5250.00	9.420	63.110	5187.49	-312.17	386.99	585.08	40°10'27.920"N	104°40'29.778"W	0.42	
5335.00	8.070	64.410	5271.50	-316.42	392.71	596.67	40°10'27.977"N	104°40'29.628"W	1.61	
5421.00	7.460	63.950	5356.71	-320.16	397.77	607.13	40°10'28.027"N	104°40'29.494"W	0.71	
5506.00	6.310	59.850	5441.10	-323.79	402.54	616.13	40°10'28.074"N	104°40'29.378"W	1.47	
5591.00	5.410	57.370	5525.65	-327.35	407.04	623.54	40°10'28.118"N	104°40'29.282"W	1.10	
5676.00	4.570	52.670	5610.33	-330.78	411.26	629.61	40°10'28.160"N	104°40'29.204"W	1.10	
5761.00	3.280	55.660	5695.13	-333.61	414.68	634.31	40°10'28.194"N	104°40'29.144"W	1.54	
5847.00	2.040	62.450	5781.04	-335.27	416.78	637.70	40°10'28.215"N	104°40'29.100"W	1.49	
5932.00	1.320	53.440	5866.00	-336.28	418.06	639.82	40°10'28.227"N	104°40'29.072"W	0.90	
6016.00	0.490	34.750	5949.99	-337.03	418.93	640.81	40°10'28.236"N	104°40'29.060"W	1.04	
6101.00	0.310	53.400	6034.99	-337.41	419.37	641.20	40°10'28.240"N	104°40'29.055"W	0.26	
6185.00	0.640	84.210	6118.98	-337.51	419.55	641.85	40°10'28.242"N	104°40'29.046"W	0.48	
6270.00	0.650	125.480	6203.98	-337.18	419.32	642.71	40°10'28.240"N	104°40'29.035"W	0.53	
6356.00	0.740	132.190	6289.97	-336.43	418.66	643.52	40°10'28.233"N	104°40'29.025"W	0.14	
6441.00	0.840	151.020	6374.96	-335.43	417.75	644.23	40°10'28.224"N	104°40'29.016"W	0.33	
6526.00	1.200	150.630	6459.95	-334.03	416.43	644.97	40°10'28.211"N	104°40'29.006"W	0.42	
6611.00	1.200	150.940	6544.93	-332.38	414.88	645.84	40°10'28.196"N	104°40'28.995"W	0.01	
6650.00	1.410	148.120	6583.92	-331.57	414.11	646.29	40°10'28.188"N	104°40'28.989"W	0.56	
6693.00	1.470	162.360	6626.91	-330.54	413.14	646.73	40°10'28.179"N	104°40'28.983"W	0.84	
6736.00	5.190	181.660	6669.83	-328.08	410.67	646.85	40°10'28.154"N	104°40'28.982"W	8.91	
6778.00	10.400	181.250	6711.43	-322.45	404.97	646.71	40°10'28.098"N	104°40'28.984"W	12.41	
6821.00	14.740	182.600	6753.39	-313.21	395.62	646.37	40°10'28.005"N	104°40'28.988"W	10.12	
6864.00	18.660	181.260	6794.56	-301.00	383.28	645.98	40°10'27.883"N	104°40'28.993"W	9.16	
6906.00	21.600	180.600	6833.99	-286.69	368.83	645.75	40°10'27.741"N	104°40'28.996"W	7.02	
6949.00	26.120	180.410	6873.31	-269.45	351.44	645.60	40°10'27.569"N	104°40'28.998"W	10.51	
6991.00	29.150	181.180	6910.51	-250.16	331.96	645.32	40°10'27.376"N	104°40'29.002"W	7.26	
7034.00	33.360	181.950	6947.27	-228.11	309.67	644.70	40°10'27.156"N	104°40'29.010"W	9.83	
7077.00	36.770	183.400	6982.46	-203.77	284.99	643.53	40°10'26.912"N	104°40'29.025"W	8.16	
7119.00	40.770	183.210	7015.20	-177.90	258.74	642.02	40°10'26.653"N	104°40'29.044"W	9.53	



Actual Wellpath Report

REIGLE 29C-9HZ AWP



REFERENCE WELLPATH IDENTIFICATION

Operator	KERR-MCGEE OIL & GAS ONSHORE LP	Slot	SLOT#28 REIGLE 29C-9HZ (473'FNL & 291'FWL, SEC.4)
Area	COLORADO	Well	REIGLE 29C-9HZ
Field	WELD COUNTY (KERR MCGEE)	Wellbore	REIGLE 29C-9HZ AWB
Facility	SEC.04-T2N-R65W		

WELLPATH DATA (157 stations) † = interpolated/extrapolated station

MD [ft]	Inclination [°]	Azimuth [°]	TVD [ft]	Vert Sect [ft]	North [ft]	East [ft]	Latitude	Longitude	DLS [°/100ft]	Comments
7162.00	45.530	183.890	7046.56	-149.00	229.40	640.19	40°10'26.363"N	104°40'29.068"W	11.12	
7204.00	50.190	181.530	7074.73	-118.32	198.30	638.74	40°10'26.056"N	104°40'29.086"W	11.85	
7247.00	54.160	181.570	7101.10	-84.75	164.36	637.83	40°10'25.720"N	104°40'29.098"W	9.23	
7290.00	58.610	181.130	7124.90	-49.33	128.57	636.99	40°10'25.366"N	104°40'29.109"W	10.38	
7332.00	63.030	181.320	7145.37	-13.05	91.92	636.20	40°10'25.004"N	104°40'29.119"W	10.53	
7375.00	67.780	180.890	7163.26	25.64	52.84	635.45	40°10'24.618"N	104°40'29.129"W	11.08	
7417.00	72.390	181.640	7177.56	64.70	13.37	634.57	40°10'24.228"N	104°40'29.140"W	11.10	
7460.00	75.630	181.940	7189.41	105.54	-27.94	633.28	40°10'23.820"N	104°40'29.157"W	7.56	
7502.00	78.130	182.210	7198.94	145.92	-68.82	631.80	40°10'23.416"N	104°40'29.176"W	5.99	
7545.00	80.880	181.720	7206.77	187.68	-111.07	630.35	40°10'22.998"N	104°40'29.195"W	6.49	
7590.00	85.200	181.560	7212.22	231.82	-155.71	629.07	40°10'22.557"N	104°40'29.211"W	9.61	
7605.00†	86.814	182.005	7213.27	246.61	-170.66	628.61	40°10'22.409"N	104°40'29.217"W	11.16	7" Casing Point
7636.00	90.150	182.920	7214.09	277.16	-201.62	627.28	40°10'22.104"N	104°40'29.234"W	11.16	
7721.00	90.760	182.810	7213.41	360.89	-286.51	623.03	40°10'21.265"N	104°40'29.289"W	0.73	
7807.00	89.870	181.620	7212.94	445.76	-372.44	619.71	40°10'20.415"N	104°40'29.332"W	1.73	
7892.00	90.520	180.090	7212.65	529.95	-457.43	618.44	40°10'19.576"N	104°40'29.348"W	1.96	
7977.00	90.060	180.180	7212.22	614.28	-542.43	618.24	40°10'18.736"N	104°40'29.351"W	0.55	
8062.00	89.780	181.380	7212.34	698.48	-627.42	617.08	40°10'17.896"N	104°40'29.366"W	1.45	
8147.00	89.750	180.490	7212.69	782.66	-712.41	615.69	40°10'17.056"N	104°40'29.384"W	1.05	
8233.00	89.560	180.970	7213.21	867.86	-798.40	614.60	40°10'16.206"N	104°40'29.398"W	0.60	
8318.00	90.000	180.030	7213.53	952.12	-883.39	613.86	40°10'15.366"N	104°40'29.407"W	1.22	
8403.00	89.630	179.180	7213.81	1036.54	-968.39	614.44	40°10'14.526"N	104°40'29.400"W	1.09	
8488.00	89.230	179.340	7214.65	1121.02	-1053.38	615.54	40°10'13.686"N	104°40'29.386"W	0.51	
8573.00	90.270	179.890	7215.02	1205.45	-1138.37	616.11	40°10'12.846"N	104°40'29.378"W	1.38	
8658.00	89.900	181.550	7214.90	1289.66	-1223.36	615.04	40°10'12.007"N	104°40'29.392"W	2.00	
8743.00	90.830	179.210	7214.36	1373.94	-1308.35	614.48	40°10'11.167"N	104°40'29.400"W	2.96	
8828.00	90.580	178.940	7213.31	1458.44	-1393.33	615.85	40°10'10.327"N	104°40'29.382"W	0.43	
8913.00	90.150	178.820	7212.77	1542.99	-1478.32	617.51	40°10'09.487"N	104°40'29.361"W	0.53	
8998.00	91.080	179.670	7211.86	1627.47	-1563.30	618.63	40°10'08.647"N	104°40'29.346"W	1.48	
9083.00	90.740	179.590	7210.51	1711.88	-1648.29	619.18	40°10'07.807"N	104°40'29.339"W	0.41	
9169.00	90.280	180.140	7209.74	1797.25	-1734.29	619.38	40°10'06.958"N	104°40'29.336"W	0.83	
9254.00	89.820	180.200	7209.67	1881.57	-1819.28	619.13	40°10'06.118"N	104°40'29.340"W	0.55	
9339.00	89.420	180.970	7210.23	1965.81	-1904.28	618.26	40°10'05.278"N	104°40'29.351"W	1.02	
9424.00	90.680	181.450	7210.16	2049.93	-1989.26	616.47	40°10'04.438"N	104°40'29.374"W	1.59	
9509.00	90.890	180.630	7208.99	2134.07	-2074.23	614.93	40°10'03.598"N	104°40'29.394"W	1.00	
9595.00	91.200	180.960	7207.42	2219.25	-2160.21	613.73	40°10'02.749"N	104°40'29.409"W	0.53	
9680.00	90.800	179.400	7205.94	2303.56	-2245.19	613.47	40°10'01.909"N	104°40'29.413"W	1.89	
9765.00	91.050	179.780	7204.57	2387.98	-2330.18	614.07	40°10'01.069"N	104°40'29.405"W	0.54	
9850.00	92.180	178.630	7202.17	2472.43	-2415.14	615.25	40°10'00.229"N	104°40'29.390"W	1.90	
9935.00	91.200	179.060	7199.66	2556.94	-2500.08	616.96	40°09'59.390"N	104°40'29.368"W	1.26	
10020.00	90.890	178.720	7198.11	2641.47	-2585.05	618.61	40°09'58.550"N	104°40'29.347"W	0.54	
10105.00	89.540	179.900	7197.80	2725.94	-2670.04	619.63	40°09'57.711"N	104°40'29.334"W	2.11	
10190.00	88.240	180.740	7199.44	2810.22	-2755.02	619.16	40°09'56.871"N	104°40'29.340"W	1.82	
10275.00	88.740	180.680	7201.68	2894.41	-2839.98	618.11	40°09'56.031"N	104°40'29.353"W	0.59	
10360.00	89.410	181.230	7203.05	2978.57	-2924.96	616.69	40°09'55.191"N	104°40'29.372"W	1.02	



Actual Wellpath Report

REIGLE 29C-9HZ AWP

Page 5 of 7



REFERENCE WELLPATH IDENTIFICATION			
Operator	KERR-MCGEE OIL & GAS ONSHORE LP	Slot	SLOT#28 REIGLE 29C-9HZ (473'FNL & 291'FWL, SEC.4)
Area	COLORADO	Well	REIGLE 29C-9HZ
Field	WELD COUNTY (KERR MCGEE)	Wellbore	REIGLE 29C-9HZ AWB
Facility	SEC.04-T2N-R65W		

WELLPATH DATA (157 stations)										
MD [ft]	Inclination [°]	Azimuth [°]	TVD [ft]	Vert Sect [ft]	North [ft]	East [ft]	Latitude	Longitude	DLS [°/100ft]	Comments
10445.00	89.810	181.110	7203.63	3062.69	-3009.94	614.96	40°09'54.352"N	104°40'29.394"W	0.49	
10530.00	89.190	180.530	7204.37	3146.89	-3094.93	613.74	40°09'53.512"N	104°40'29.410"W	1.00	
10615.00	90.520	181.590	7204.59	3231.03	-3179.91	612.17	40°09'52.672"N	104°40'29.430"W	2.00	
10700.00	89.690	181.840	7204.43	3315.04	-3264.87	609.62	40°09'51.832"N	104°40'29.463"W	1.02	
10786.00	90.400	181.370	7204.37	3400.05	-3350.84	607.21	40°09'50.983"N	104°40'29.494"W	0.99	
10871.00	90.700	181.120	7203.55	3484.16	-3435.81	605.37	40°09'50.143"N	104°40'29.518"W	0.46	
10956.00	90.920	180.880	7202.35	3568.31	-3520.79	603.88	40°09'49.303"N	104°40'29.537"W	0.38	
11042.00	89.200	182.230	7202.26	3653.34	-3606.75	601.55	40°09'48.454"N	104°40'29.567"W	2.54	
11127.00	89.100	181.980	7203.52	3737.24	-3691.69	598.43	40°09'47.615"N	104°40'29.607"W	0.32	
11212.00	89.140	183.540	7204.83	3820.99	-3776.58	594.34	40°09'46.776"N	104°40'29.660"W	1.84	
11297.00	89.350	183.000	7205.95	3904.60	-3861.43	589.49	40°09'45.937"N	104°40'29.722"W	0.68	
11382.00	89.910	182.230	7206.49	3988.39	-3946.34	585.61	40°09'45.098"N	104°40'29.772"W	1.12	
11467.00	90.180	179.540	7206.43	4072.57	-4031.32	584.30	40°09'44.258"N	104°40'29.789"W	3.18	
11552.00	91.510	180.360	7205.17	4156.92	-4116.31	584.37	40°09'43.418"N	104°40'29.788"W	1.84	
11637.00	89.080	180.780	7204.74	4241.16	-4201.30	583.53	40°09'42.579"N	104°40'29.799"W	2.90	
11722.00	88.460	178.150	7206.56	4325.58	-4286.27	584.32	40°09'41.739"N	104°40'29.789"W	3.18	
11807.00	88.770	177.290	7208.62	4410.26	-4371.17	587.70	40°09'40.900"N	104°40'29.745"W	1.08	
11892.00	88.790	179.020	7210.43	4494.89	-4456.11	590.44	40°09'40.061"N	104°40'29.710"W	2.03	
11977.00	89.690	179.290	7211.55	4579.38	-4541.09	591.69	40°09'39.221"N	104°40'29.694"W	1.11	
12062.00	90.240	179.920	7211.60	4663.81	-4626.09	592.28	40°09'38.381"N	104°40'29.687"W	0.98	
12104.00	89.840	179.730	7211.58	4705.50	-4668.09	592.40	40°09'37.966"N	104°40'29.685"W	1.05	Last BHI MWD+IFR Surveys
12161.00	89.840	179.730	7211.73	4762.10	-4725.08	592.67	40°09'37.402"N	104°40'29.681"W	0.00	Projection to Bit

HOLE & CASING SECTIONS - Ref Wellbore: REIGLE 29C-9HZ AWB Ref Wellpath: REIGLE 29C-9HZ AWP									
String/Diameter	Start MD [ft]	End MD [ft]	Interval [ft]	Start TVD [ft]	End TVD [ft]	Start N/S [ft]	Start E/W [ft]	End N/S [ft]	End E/W [ft]
13.5in Open Hole	17.00	902.00	885.00	17.00	901.99	0.00	0.00	3.24	-1.03
9.625in Casing Surface	17.00	902.00	885.00	17.00	901.99	0.00	0.00	3.24	-1.03
8.75in Open Hole	902.00	7635.00	6733.00	901.99	7214.09	3.24	-1.03	-200.62	627.33
7in Casing Intermediate	17.00	7605.00	7588.00	17.00	7213.27	0.00	0.00	-170.66	628.61
6.125in Open Hole	7605.00	12161.00	4556.00	7213.27	7211.73	-170.66	628.61	-4725.08	592.67



Actual Wellpath Report

REIGLE 29C-9HZ AWP

Page 6 of 7



REFERENCE WELLPATH IDENTIFICATION			
Operator	KERR-MCGEE OIL & GAS ONSHORE LP	Slot	SLOT#28 REIGLE 29C-9HZ (473'FNL & 291'FWL, SEC.4)
Area	COLORADO	Well	REIGLE 29C-9HZ
Field	WELD COUNTY (KERR MCGEE)	Wellbore	REIGLE 29C-9HZ AWB
Facility	SEC.04-T2N-R65W		

TARGETS									
Name	MD [ft]	TVD [ft]	North [ft]	East [ft]	Grid East [US ft]	Grid North [US ft]	Latitude	Longitude	Shape
SECTION 4 LINES		0.00	-22.26	-19.87	3229948.40	1307042.68	40°10'23.876"N	104°40'37.571"W	polygon
REIGLE 29C-9HZ BHL ON PLAT (51'FNL & 927'FWL, SEC.9) REV-1		7209.00	-4725.34	585.02	3230596.89	1302345.63	40°09'37.400"N	104°40'29.780"W	point
REIGLE 29C-9HZ LAND BOX		7209.00	0.00	0.00	3229968.07	1307065.12	40°10'24.096"N	104°40'37.315"W	polygon
SEC. 4 HARDLINES (460' SETBACKS)		7220.00	-22.26	-19.87	3229948.40	1307042.68	40°10'23.876"N	104°40'37.571"W	polygon
REIGLE 29C-9HZ BHL ON PLAT (51'FNL & 927'FWL, SEC.9) REV-2		7226.00	-4725.34	585.02	3230596.89	1302345.62	40°09'37.400"N	104°40'29.780"W	point

WELLPATH COMPOSITION - Ref Wellbore: REIGLE 29C-9HZ AWB Ref Wellpath: REIGLE 29C-9HZ AWP				
Start MD [ft]	End MD [ft]	Positional Uncertainty Model	Log Name/Comment	Wellbore
17.00	832.00	Generic gyro - continuous (Standard)	GYRODATA SURVEYS <117-832>	REIGLE 29C-9HZ AWB
832.00	7590.00	NaviTrak (MAGCORR,IFR)	BHI MWD+IFR SURVEYS 8 3/4" HOLE <966-7590>	REIGLE 29C-9HZ AWB
7590.00	12104.00	OnTrak (MAGCORR,IFR)	BHI MWD+IFR SURVEYS 6 1/8" HOLE <7636-12104>	REIGLE 29C-9HZ AWB
12104.00	12161.00	Blind Drilling (std)	Projection to bit	REIGLE 29C-9HZ AWB



Actual Wellpath Report

REIGLE 29C-9HZ AWP

Page 7 of 7



REFERENCE WELLPATH IDENTIFICATION			
Operator	KERR-MCGEE OIL & GAS ONSHORE LP	Slot	SLOT#28 REIGLE 29C-9HZ (473'FNL & 291'FWL, SEC.4)
Area	COLORADO	Well	REIGLE 29C-9HZ
Field	WELD COUNTY (KERR MCGEE)	Wellbore	REIGLE 29C-9HZ AWB
Facility	SEC.04-T2N-R65W		

WELLPATH COMMENTS					
MD [ft]	Inclination [°]	Azimuth [°]	TVD [ft]	Comment	
17.00	0.000	349.300	17.00	Tie-On	
117.00	0.370	349.300	117.00	Begin GYRO Surveys	
832.00	0.160	317.190	831.99	Tie-Into GYRO Surveys	
966.00	0.380	121.990	965.99	Begin BHI MWD+IFR Surveys	
7605.00	86.814	182.005	7213.27	7" Casing Point	
12104.00	89.840	179.730	7211.58	Last BHI MWD+IFR Surveys	
12161.00	89.840	179.730	7211.73	Projection to Bit	