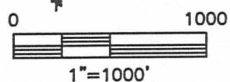
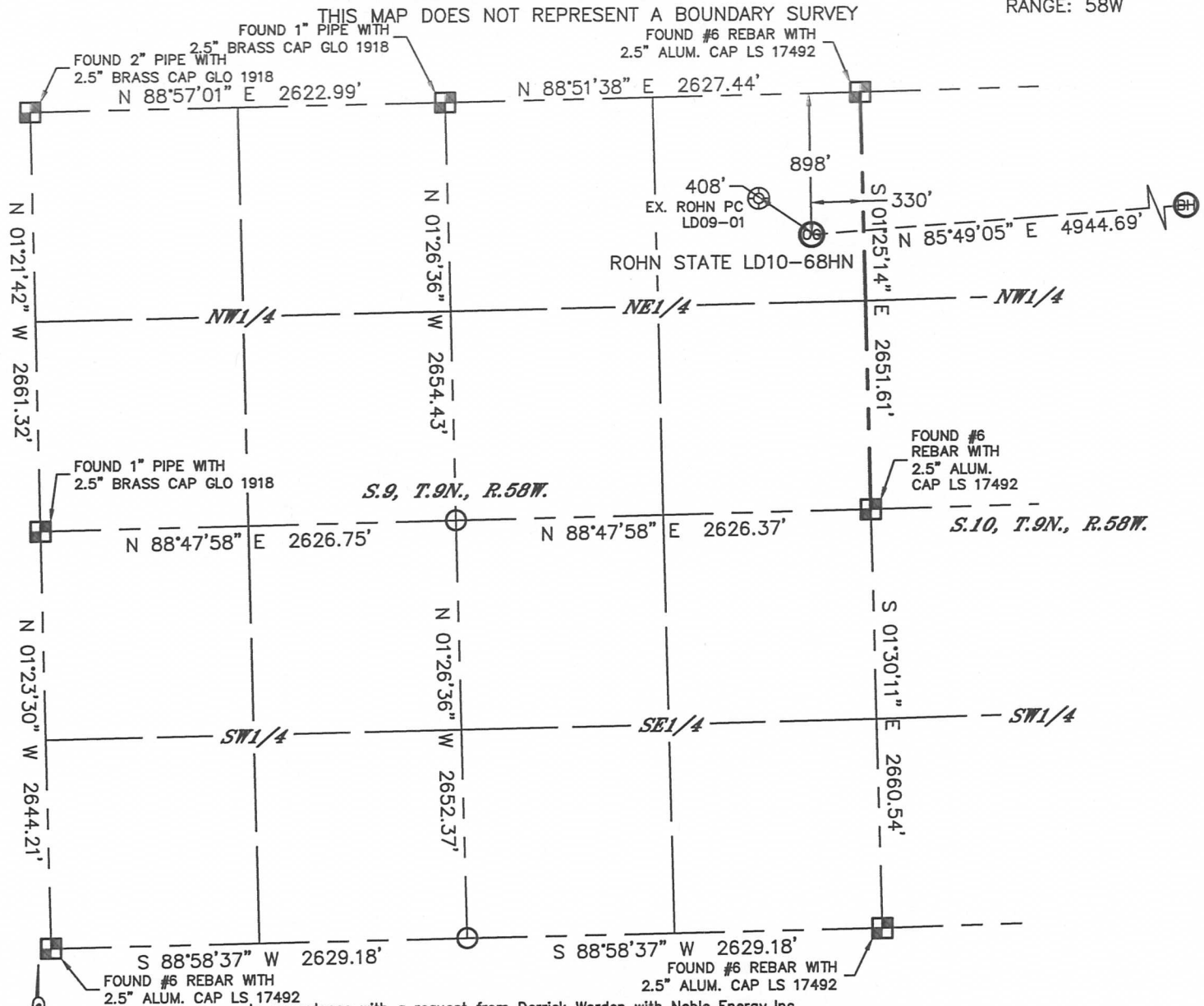


## WELL LOCATION CERTIFICATE

SECTION: 9  
TOWNSHIP: 9N  
RANGE: 58W

In accordance with a request from Derrick Worden with Noble Energy Inc., Lat40°, Inc. has determined the surface location of the ROHN STATE LD10-68HN to be 898' from the NORTH line and 330' from the EAST line as measured at right angles from the section lines of Section 9, Township 9 North, Range 58 West of the Sixth Principal Meridian and the bottom hole to be 660' from the NORTH line and 660' from the EAST line as measured at right angles from the section lines of Section 10, Township 9 North, Range 58 West of the Sixth Principal Meridian, County of Weld, State of Colorado.

I hereby state that this Well Location Certificate was prepared by me, or under my direct supervision, that the fieldwork was completed on 11/29/2012, for and on behalf of Noble Energy Inc. That this is not a Land Survey Plat or an Improvement Survey Plat, and that it is not to be relied upon for establishment of fence, building, or other future improvement lines.

## NOTE:

- 1) Bearings shown are Grid Bearings of the Colorado State Plane Coordinate System, North Zone, North American Datum 1983/2007. The lineal dimensions as contained herein are based upon the "U.S. Survey Foot."
- 2) Ground elevations are based on an observed GPS elevation (NAVD 1988 DATUM).
- 3) NEAREST EXISTING WELL: ROHN PC LD09-01, 408'
- 4) IMPROVEMENTS: See LOCATION DRAWING for all visible improvements within 400' of disturbed area.
- 5) SURFACE USE: RANGELAND
- 6) INSTRUMENT OPERATOR: BRIAN ROTTINGHAUS

## NOTE

According to Colorado law, you must commence any legal action based upon any defect in this W.L.C. within three years after you discover such defect. In no event, may any action based upon any defect in this survey be commenced more than ten years after the date of the certificate shown hereon. (13-80-105 C.R.S.)

## LEGEND

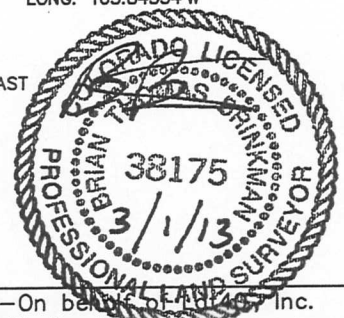
- = ALIQUOT MONUMENT AS DESCRIBED  
 = CALCULATED POSITION

## SURFACE LOCATION

LAT: 40.77069°N  
 LONG: 103.86116°W  
 PDOP: 2.7  
 ELEV: 4739'  
 1/4, 1/4: NE1/4NE1/4  
 NEAREST PROPERTY LINE: 330' EAST

## BOTTOM HOLE

LAT: 40.77143°N  
 LONG: 103.84334°W



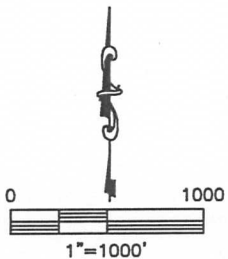
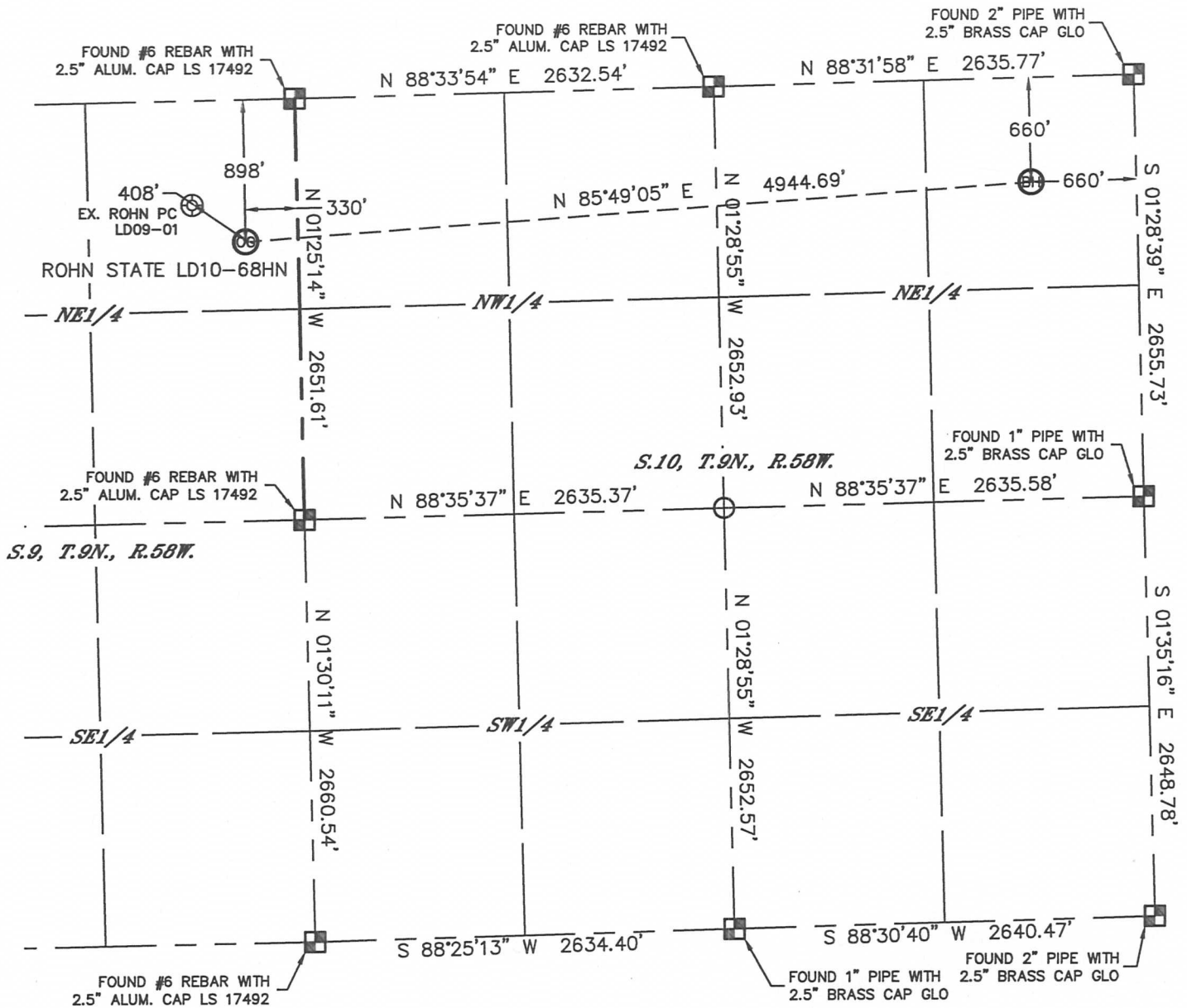
## SHEET 1 OF 2

Brian T. Brinkman—On behalf of Lat40°, Inc.  
 Colorado Licensed Professional Land Surveyor No. 38175  
 DATE: 3/1/2013  
 PROJECT#: 2012159

# WELL LOCATION CERTIFICATE

THIS MAP DOES NOT REPRESENT A BOUNDARY SURVEY

SECTION: 9  
TOWNSHIP: 9N  
RANGE: 58W



**NOTE**

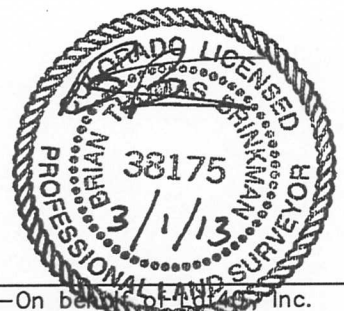
According to Colorado law, you must commence any legal action based upon any defect in this W.L.C. within three years after you discover such defect. In no event, may any action based upon any defect in this survey be commenced more than ten years after the date of the certificate shown hereon. (13-80-105 C.R.S.)

**LEGEND**

- = ALIQUOT MONUMENT AS DESCRIBED
- = CALCULATED POSITION

**SHEET 2 OF 2**

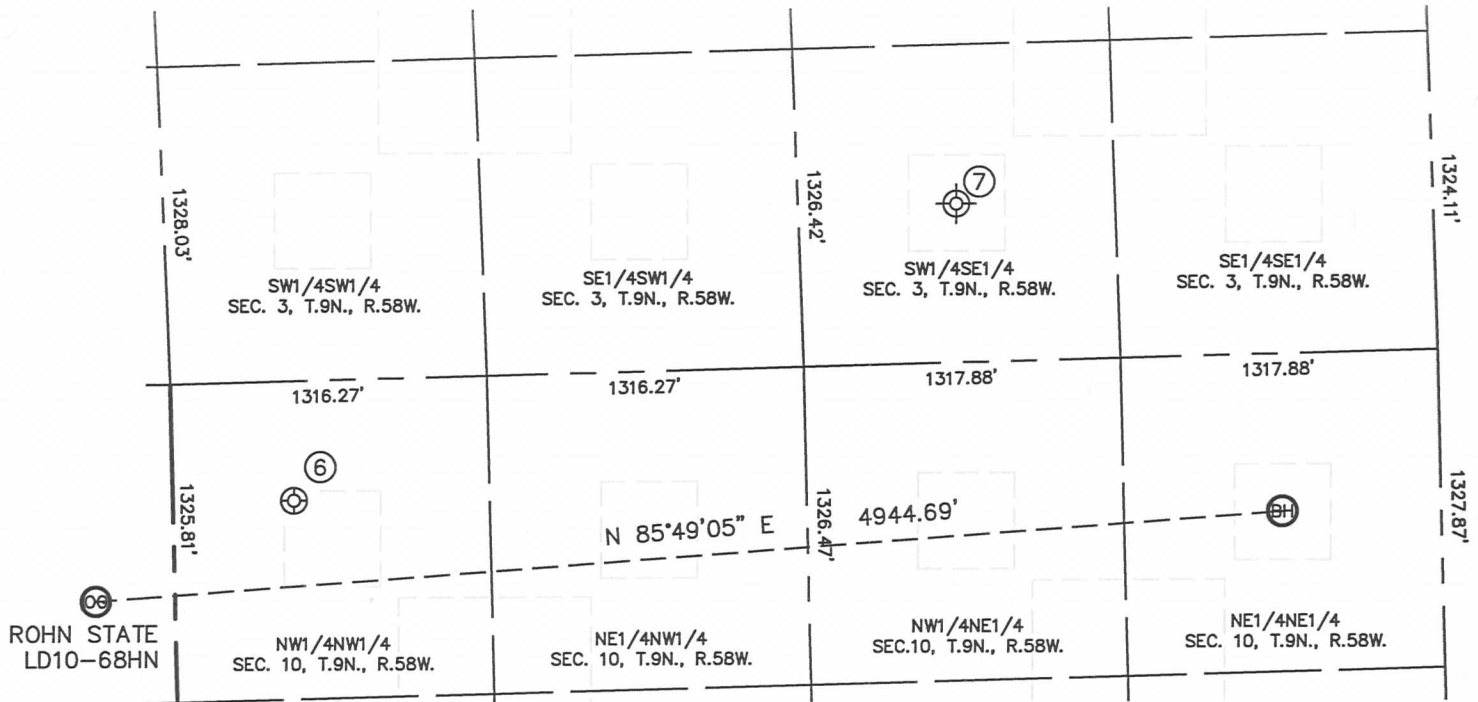
Brian T. Brinkman—On behalf of Lat40°, Inc.  
Colorado Licensed Professional Land Surveyor No. 38175  
DATE: 3/1/2013  
PROJECT#: 2012159



# SITE SKETCH

ROHN STATE LD10-68HN

SECTION: 9  
TOWNSHIP: 9N  
RANGE: 58W



⑥

FISCUS MESA 09-10H  
NW1/4NW1/4  
500' FNL  
501' FWL  
LAT-40.77179°N  
LONG-103.85817°W  
PDOP: 1.5  
ELEV: 4716'

⑦

ALICE NAY 1  
Drilled & Abandoned  
SW1/4SE1/4  
660' FSL (COGCC)  
1980' FEL (COGCC)  
LAT-40.77484°N (COGCC)  
LONG-103.84826°W (COGCC)  
PDOP: N/A  
ELEV: 4658' (COGCC)

