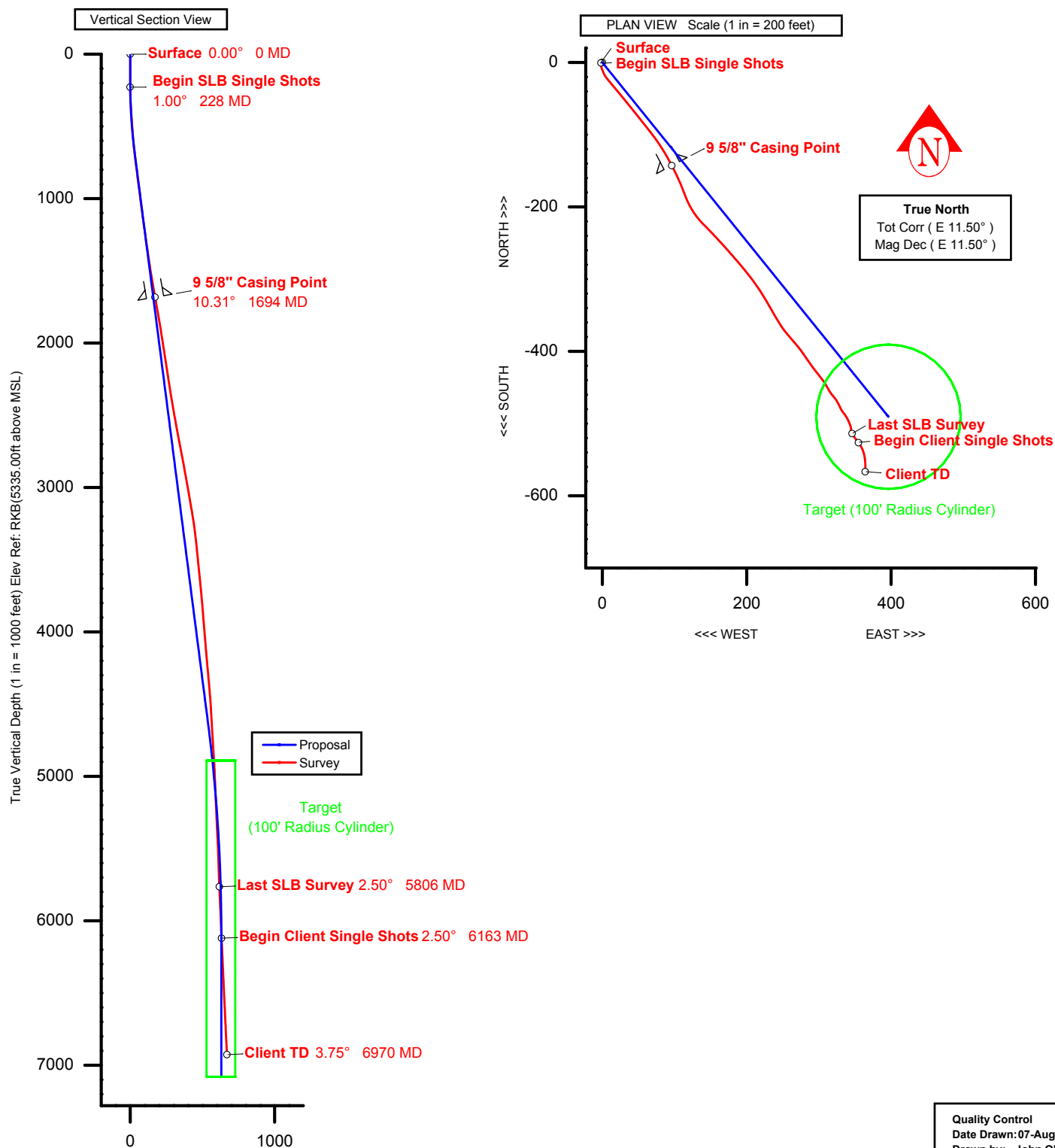


WELL PA 343-33	FIELD Garfield County, Colorado	RIG Nabors 903
Magnetic Parameters Model: BGGM 2002 Dip: 65.966° Mag Dec: 11.497° Date: June 03, 2002 FS: 53092.4 nT	Surface Location Lat: N39 28 47.361 Lon: W107 59 49.024 North: 1063285.32 ftUS East: 2295227.73 ftUS Grid Conv: -1.6134° Scale Fact:1.0000	Plan# : Rev0 jok 13-Mar-02 Slot: PA 343-33 Elev Ref: RKB(5335.00ft above MSL) Date Drawn: 01:18:41PM 07-Aug-2002



Vertical Section Departure at 141.07 deg from (0.0, 0.0). (1 in = 1000 feet)

Quality Control
Date Drawn: 07-Aug-2002
Drawn by: John O'Keefe
Checked by: Jim Amundson
Client OK: _____