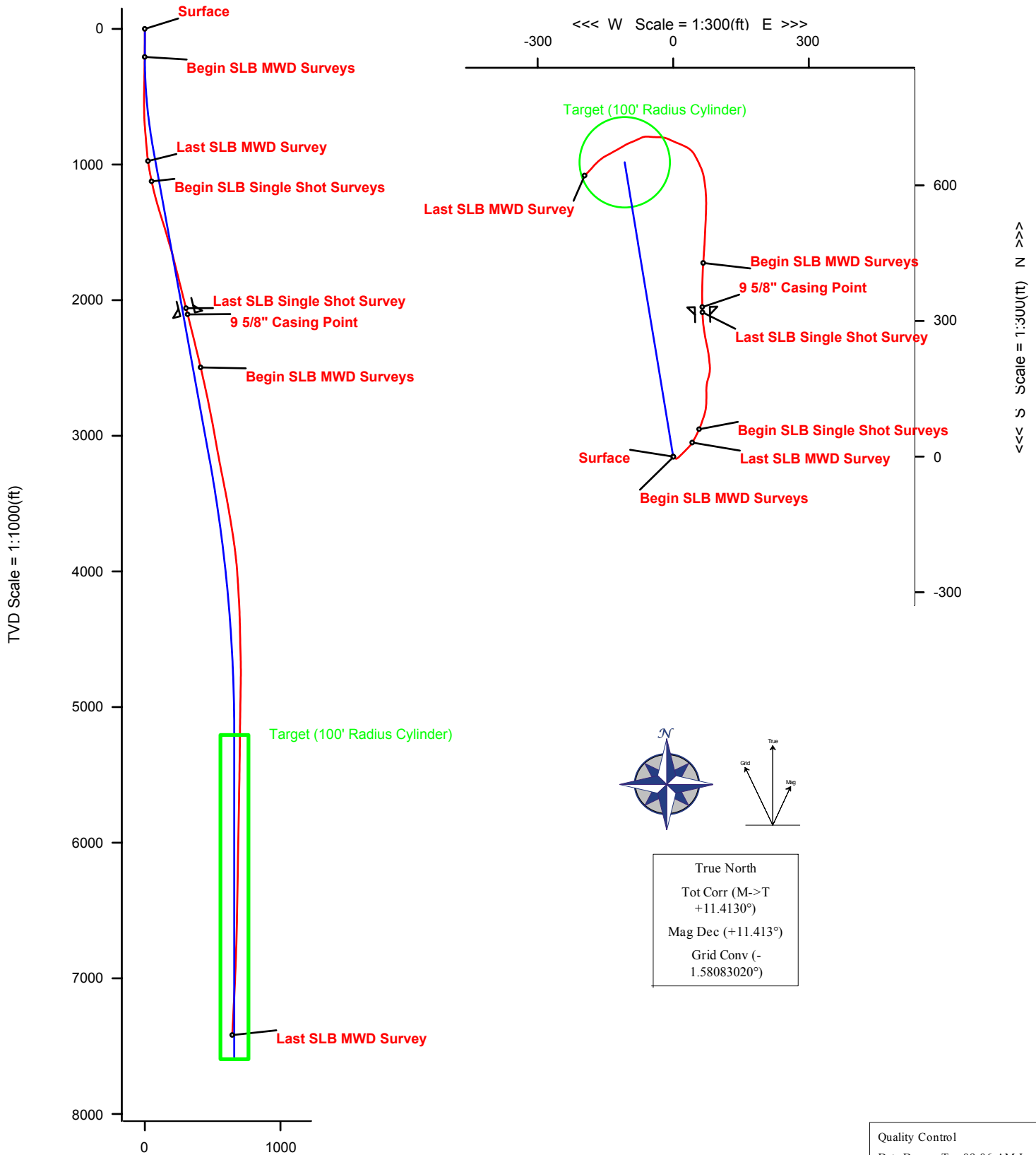


Well PA 24-28				Field Garfield County, Colorado				Rig Nabors 909							
Magnetic Parameters				Surface Location				Miscellaneous							
Model	BGM 2002	Dip	65.951°	Date	April 30, 2003	Latitude	N39 29 21.991	Northing	1612916.40 RUS	Grid Convergence	-1.58083020°	Slot	PA 24-28	TVD Reference	RKB (5609.00 ft above MSL)
		Mag Dec	+11.413°	Field Strength	53110.2 nT	Longitude	W108 0 23.439	Easting	2292685.30 RUS	Scale Factor	0.9999590000	Plan	Rev0 jaw 02-Jan-03	Survey Date	June 24, 2003



Vertical Section (ft) Azim = 350.63°, Scale = 1:1000 Origin = 0 N/-S, 0 E/-W

Quality Control
 Date Drawn: Tue 09:06 AM June 24, 2003
 Drawn by: Jim Wimberg
 Checked by: John O'Keefe
 Client OK: