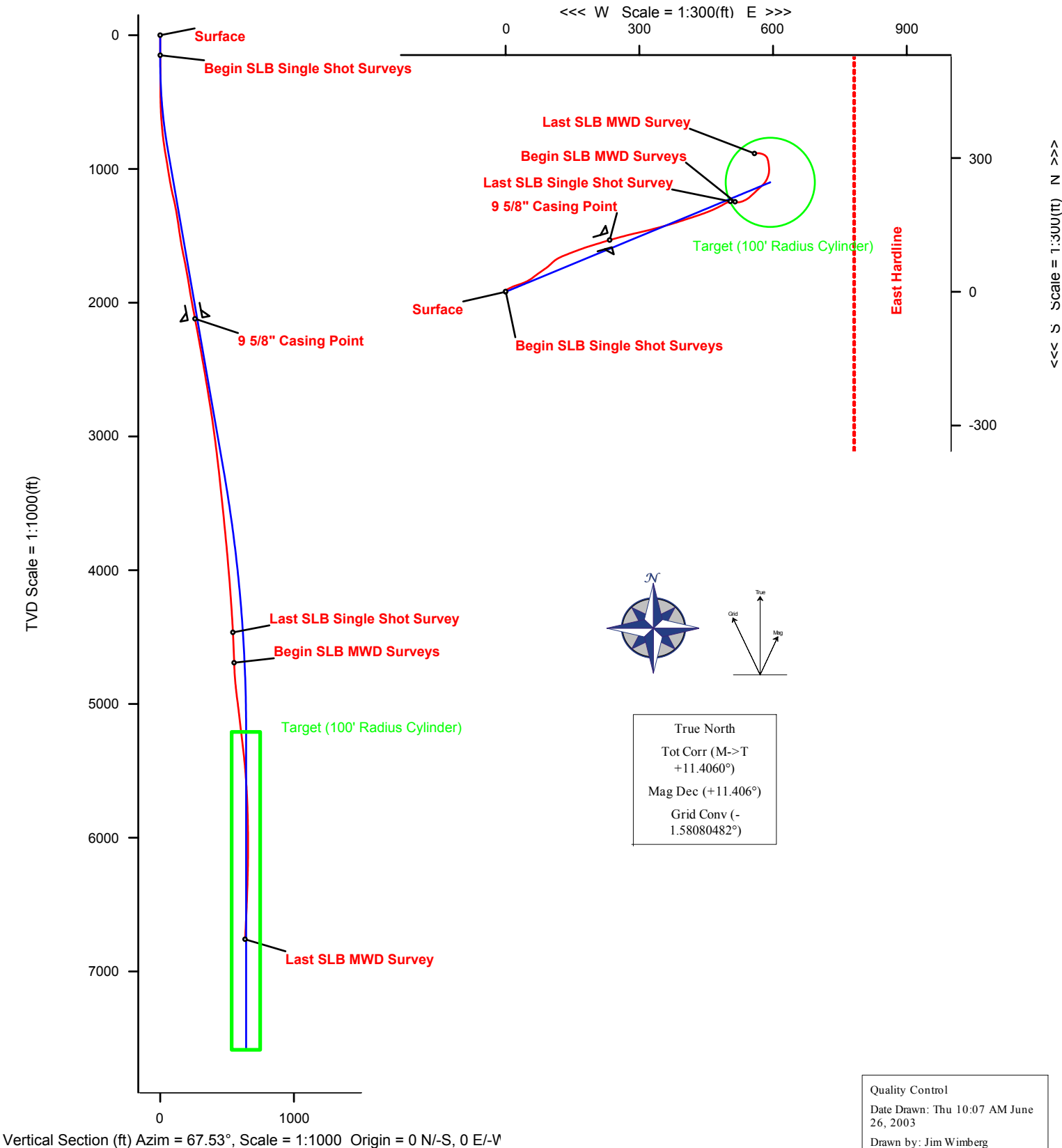


Well <b>PA 324-28</b>						Field <b>Garfield County, Colorado</b>						Rig <b>Nabors 909</b>			
Magnetic Parameters						Surface Location						Miscellaneous			
Model	BGGM 2002	Dip	65.950°	Date	May 25, 2003	Latitude	N39 29 21.894	Northing	1612906.28 ftUS	Grid Convergence	-1.58080482°	Slot	PA 324-28	TVD Reference	RKB (5609.00 ft above MSL)
		Mag Dec	+11.406°	Field Strength	53103.9 nT	Longitude	W108 0 23.294	Easting	2292696.39 ftUS	Scale Factor	0.9999590000	Plan	Rev0 jaw 02-Jan-03	Survey Date	June 26, 2003



Quality Control  
Date Drawn: Thu 10:07 AM June 26, 2003  
Drawn by: Jim Wimberg  
Checked by: John O'Keefe  
Client OK: