

---

**WPX ENERGY ROCKY MOUNTAIN LLC-EBUS**

---

**PA 44-5  
PARACHUTE  
Garfield County , Colorado**

**Cement Surface Casing**  
**05-Dec-2012**

**Post Job Report**

## The Road to Excellence Starts with Safety

Sold To #: 300721	Ship To #: 2962940	Quote #:	Sales Order #: 9954190
Customer: WPX ENERGY ROCKY MOUNTAIN LLC-EBUS	Customer Rep: Towers, Ron		
Well Name: PA	Well #: 44-5	API/UWI #: 05-045-20058	
Field: PARACHUTE	City (SAP): PARACHUTE	County/Parish: Garfield	State: Colorado
Lat: N 39.463 deg. OR N 39 deg. 27 min. 48.337 secs.	Long: W 108.007 deg. OR W -109 deg. 59 min. 35.423 secs.		
Contractor: NABORS 577	Rig/Platform Name/Num: NABORS 577		
Job Purpose: Cement Surface Casing			
Well Type: Development Well	Job Type: Cement Surface Casing		
Sales Person: MAYO, MARK	Srv Supervisor: CASTILLO, FRANCISCO	MBU ID Emp #: 513620	

## Job Personnel

HES Emp Name	Exp Hrs	Emp #	HES Emp Name	Exp Hrs	Emp #	HES Emp Name	Exp Hrs	Emp #
CASTILLO, FRANCISCO P	0.0	513620	CASTILLO, FRANCISCO P	0.0	513620	ENGBERG, KEVIN W	0.0	454218
SMITH, CHRISTOPHER Scott	0.0	452619	WOLFE, JON P	0.0	485217			

## Equipment

HES Unit #	Distance-1 way	HES Unit #	Distance-1 way	HES Unit #	Distance-1 way	HES Unit #	Distance-1 way
10616651C	60 mile	10867423	60 mile	10867425	60 mile	10897891	60 mile
11259884	60 mile	11562538	60 mile	11808827	60 mile		

## Job Hours

Date	On Location Hours	Operating Hours	Date	On Location Hours	Operating Hours	Date	On Location Hours	Operating Hours

TOTAL	Total is the sum of each column separately							
-------	--	--	--	--	--	--	--	--

## Job

Formation Name	Top	Bottom	Called Out	Date	Time	Time Zone
Formation Depth (MD)			On Location	05 - Dec - 2012	00:30	MST
Form Type		BHST	Job Started	05 - Dec - 2012	04:31	MST
Job depth MD	19250. ft	Job Depth TVD	19250. ft	Job Completed	05 - Dec - 2012	05:39
Water Depth		Wk Ht Above Floor	3. ft	Departed Loc	05 - Dec - 2012	07:00
Perforation Depth (MD)	From	To				

## Well Data

Description	New / Used	Max pressure psig	Size in	ID in	Weight lbm/ft	Thread	Grade	Top MD ft	Bottom MD ft	Top TVD ft	Bottom TVD ft
-------------	------------	-------------------	---------	-------	---------------	--------	-------	-----------	--------------	------------	---------------

Sales/Rental/3<sup>rd</sup> Party (HES)

Description	Qty	Qty uom	Depth	Supplier
PLUG,CMTG,TOP,9 5/8,HWE,8.16 MIN/9.06 MA	1	EA		

## Tools and Accessories

Type	Size	Qty	Make	Depth	Type	Size	Qty	Make	Depth	Type	Size	Qty	Make
Guide Shoe					Packer					Top Plug			
Float Shoe					Bridge Plug					Bottom Plug			
Float Collar					Retainer					SSR plug set			
Insert Float										Plug Container			
Stage Tool										Centralizers			

## Miscellaneous Materials

Gelling Agt	Conc	Surfactant	Conc	Acid Type	Qty	Conc	%
Treatment Fld	Conc	Inhibitor	Conc	Sand Type	Size	Qty	

## Fluid Data

Stage/Plug #: 1	Fluid #	Stage Type	Fluid Name	Qty	Qty uom	Mixing Density lbm/gal	Yield ft <sup>3</sup> /sk	Mix Fluid Gal/sk	Rate bbl/min	Total Mix Fluid Gal/sk
-----------------	---------	------------	------------	-----	---------	------------------------	---------------------------	------------------	--------------	------------------------

1	Water Spacer		20.00	bbl	8.33	.0	.0	.0	
2	Lead Cement	VERSACEM (TM) SYSTEM (452010)	270.0	sacks	12.3	2.38	13.75		13.75
3	Tail Cement	VERSACEM (TM) SYSTEM (452010)	160.0	sacks	12.8	2.11	11.75		11.75
4	Displacement		147.00	bbl	8.33	.0	.0	.0	
<b>Calculated Values</b>		<b>Pressures</b>		<b>Volumes</b>					
Displacement		Shut In: Instant		Lost Returns		Cement Slurry		Pad	
Top Of Cement		5 Min		Cement Returns		Actual Displacement		Treatment	
Frac Gradient		15 Min		Spacers		Load and Breakdown		Total Job	
<b>Rates</b>									
Circulating		Mixing		Displacement		Avg. Job			
Cement Left In Pipe		Amount	0 ft	Reason	Shoe Joint				
Frac Ring # 1 @	ID	Frac ring # 2 @	ID	Frac Ring # 3 @	ID	Frac Ring # 4 @	ID		
The Information Stated Herein Is Correct				Customer Representative Signature					

*The Road to Excellence Starts with Safety*

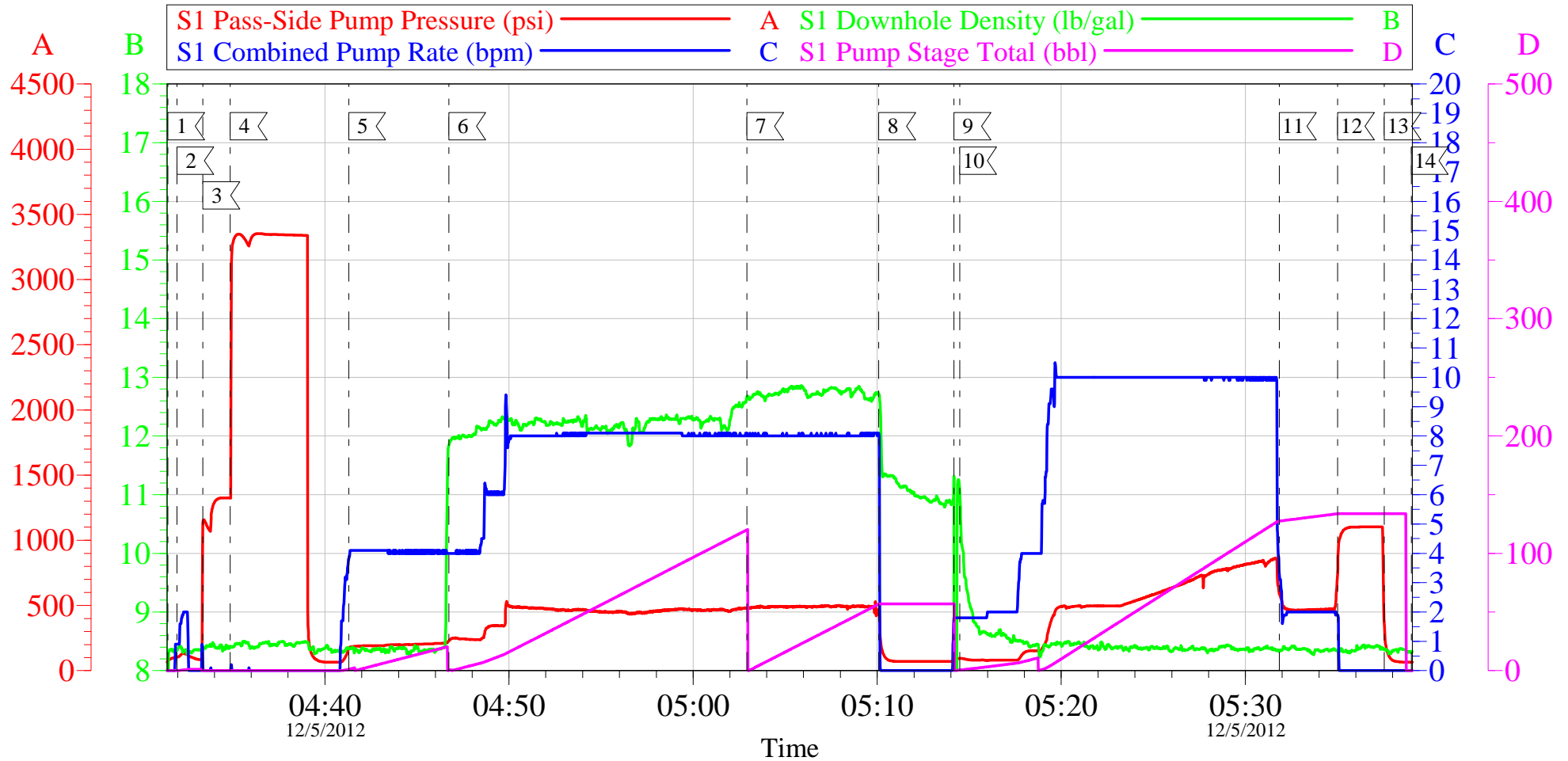
<b>Sold To #:</b> 300721		<b>Ship To #:</b> 2962940		<b>Quote #:</b>		<b>Sales Order #:</b> 9954190	
<b>Customer:</b> WPX ENERGY ROCKY MOUNTAIN LLC-EBUS				<b>Customer Rep:</b> Towers, Ron			
<b>Well Name:</b> PA			<b>Well #:</b> 44-5			<b>API/UWI #:</b> 05-045-20058	
<b>Field:</b> PARACHUTE		<b>City (SAP):</b> PARACHUTE		<b>County/Parish:</b> Garfield		<b>State:</b> Colorado	
<b>Legal Description:</b>							
<b>Lat:</b> N 39.463 deg. OR N 39 deg. 27 min. 48.337 secs.				<b>Long:</b> W 108.007 deg. OR W -109 deg. 59 min. 35.423 secs.			
<b>Contractor:</b> NABORS 577			<b>Rig/Platform Name/Num:</b> NABORS 577				
<b>Job Purpose:</b> Cement Surface Casing						<b>Ticket Amount:</b>	
<b>Well Type:</b> Development Well			<b>Job Type:</b> Cement Surface Casing				
<b>Sales Person:</b> MAYO, MARK			<b>Srvc Supervisor:</b> CASTILLO, FRANCISCO			<b>MBU ID Emp #:</b> 513620	

Activity Description	Date/Time	Cht #	Rate bbl/min	Volume bbl		Pressure psig		Comments
				Stage	Total	Tubing	Casing	
Pre-Convoy Safety Meeting	12/04/2012 23:20							ALL HES PERSONEL
Crew Leave Yard	12/04/2012 23:30							
Arrive At Loc	12/05/2012 00:30							RIG WAS RUNNING CASING/RIG LANDED CASING AT 03:00 AM AND STARTED CIRCULATING WELL AT 03:20 AM
Assessment Of Location Safety Meeting	12/05/2012 00:45							ALL HES PERSONEL
Rig-Up Equipment	12/05/2012 01:00							1-ELITE#4, 2-660 BULK TRUCKS, PUMPING IRON
Rig-Up Completed	12/05/2012 02:00							
Pre-Job Safety Meeting	12/05/2012 04:15							ALL HES PERSONEL AND RIG CREW
Start Job	12/05/2012 04:31							TD-1925', TP-1912', SJ-44', FC-1868', OH-13.5", MUD-11ppg, FV-60, PV-24, YP-32, pH-10.2, TEMP-125 deg
Other	12/05/2012 04:31		2	2			180.0	FILL LINES
Other	12/05/2012 04:33		0.2	0.2				STALL OUT/PRESSURE HELD AT 1326 PSI
Pressure Test	12/05/2012 04:34		0.2	0.2				ALL LINES HELD PRESSURE AT 3348 PSI
Pump Spacer 1	12/05/2012 04:41		4	20			210.0	FRESH WATER

Activity Description	Date/Time	Cht #	Rate bbl/min	Volume bbl		Pressure psig		Comments
				Stage	Total	Tubing	Casing	
Pump Lead Cement	12/05/2012 04:46		8	114			478.0	270 SKS, 12.3 PPG, 2.38 FT3/ SK, 13.77 GAL/SK
Pump Tail Cement	12/05/2012 05:02		8	60			490.0	160 SKS, 12.8 PPG, 2.11 FT3/SK, 11.75 GAL/SK
Shutdown	12/05/2012 05:10							
Drop Top Plug	12/05/2012 05:14							PLUG DROP VERIFIED BY CUSTOMER AND DRILLER
Pump Displacement	12/05/2012 05:14		10	137			830.0	FRESH WATER
Slow Rate	12/05/2012 05:31		2	10			480.0	USED 80LBS OF SUGAR
Bump Plug	12/05/2012 05:35			147			1100.0	CIRCULATED 27BBLS/64SKS OF CEMENT TO SURFACE
Check Floats	12/05/2012 05:37							FLOATS HELD/FLOW BACK 1BBL
End Job	12/05/2012 05:39							
Post-Job Safety Meeting (Pre Rig-Down)	12/05/2012 05:45							ALL HES PERSONEL
Rig-Down Completed	12/05/2012 06:30							
Depart Location Safety Meeting	12/05/2012 06:50							ALL HES PERSONEL
Crew Leave Location	12/05/2012 07:00							
Other	12/05/2012 07:00							THANK YOU FOR CHOOSING HALLIBURTON, JAVIER CASTILLO AND CREW

# WPX PA 44-5

SURFACE



## Local Event Log

1 START JOB	04:31:28	2 FILL LINES	04:31:58	3 STALL OUT	04:33:23
4 TEST LINES	04:34:52	5 SPACER	04:41:18	6 LEAD SLURRY	04:46:44
7 TAIL SLURRY	05:02:55	8 SHUTDOWN	05:10:05	9 DROP PLUG	05:14:10
10 DISPLACEMENT	05:14:29	11 SLOW RATE	05:31:51	12 BUMP PLUG	05:35:00
13 CHECK FLOATS	05:37:32	14 END JOB	05:39:01		

Customer: WPX ENERGY ROCKY MOUNTAIN LLC-EBUS  
 Well Description: PA 44-5  
 Company Rep: RON TOWERS

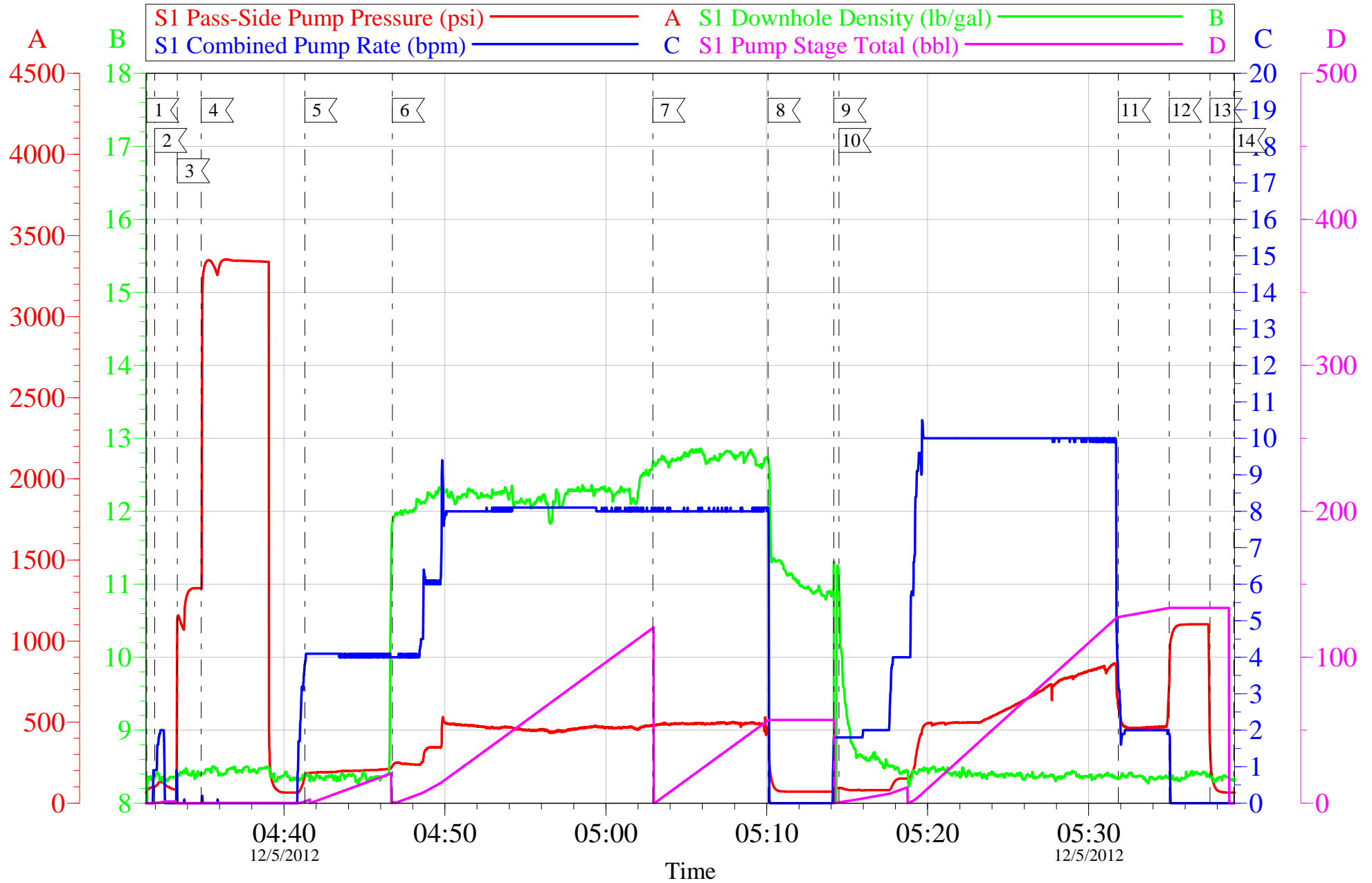
Job Date: 05-Dec-2012  
 Job Type: SURFACE  
 Cement Supervisor: JAVIER CASTILLO

Sales Order #: 9954190  
 ADC Used: YES  
 Elite #4: CHRIS SMITH

OptiCem v6.4.10  
 05-Dec-12 05:52

# WPX PA 44-5

SURFACE



Customer: WPX ENERGY ROCKY MOUNTAIN LLC-EBUS  
 Well Description: PA 44-5  
 Company Rep: RON TOWERS

Job Date: 05-Dec-2012  
 Job Type: SURFACE  
 Cement Supervisor: JAVIER CASTILLO

Sales Order #: 9954190  
 ADC Used: YES  
 Elite #4: CHRIS SMITH

OptiCem v6.4.10  
 05-Dec-12 05:52

# HALLIBURTON

## Water Analysis Report

Company: WPX

Submitted by: JAVIER CASTILLO

Attention: J.Trout

Lease PA

Well # 44-5

Date: 12/5/2012

Date Rec.: 12/5/2012

S.O.# 9954190

Job Type: SURFACE

Specific Gravity	<i>MAX</i>	<b>1</b>
pH	<i>8</i>	<b>7</b>
Potassium (K)	<i>5000</i>	<b>200</b> Mg / L
Calcium (Ca)	<i>500</i>	<b>100</b> Mg / L
Iron (FE2)	<i>300</i>	<b>0 0</b>
Chlorides (Cl)	<i>3000</i>	<b>0</b> Mg / L
Sulfates (SO <sub>4</sub> )	<i>1500</i>	<b>200</b> Mg / L
Chlorine (Cl <sub>2</sub> )		<b>0</b> Mg / L
Temp	<i>40-80</i>	<b>67</b> Deg
Total Dissolved Solids		<b>200</b> Mg / L

Respectfully: JAVIER CASTILLO

Title: CEMENTING SUPERVISOR

Location: Grand Junction, CO

NOTICE: This report is limited to the described sample tested. Any person using or relying on this report agrees that Halliburton shall not be liable for any loss or damage whether due to act or omission resulting from such report or its use.



<b>Sales Order #:</b> 9954190	<b>Line Item:</b> 10	<b>Survey Conducted Date:</b> 12/5/2012
<b>Customer:</b> WPX ENERGY ROCKY MOUNTAIN LLC-EBUS		<b>Job Type (BOM):</b> CMT SURFACE CASING BOM
<b>Customer Representative:</b> WC WILSON		<b>API / UWI: (leave blank if unknown)</b> 05-045-20058
<b>Well Name:</b> PA		<b>Well Number:</b> 44-5
<b>Well Type:</b> Development Well	<b>Well Country:</b> United States of America	
<b>H2S Present:</b> No	<b>Well State:</b> Colorado	<b>Well County:</b> Garfield

Dear Customer,

We hope that you were satisfied with the service quality of this job performed by Halliburton. It is the aim of our management and service personnel to deliver equipment and service of a standard unmatched in the service sector of the energy industry.

Please take the time to let us know if our performance met with your satisfaction. Please be as critical as possible to ensure we constantly improve our service. Your comments are of great value to us and are intended for the exclusive use of Halliburton.

### CUSTOMER SATISFACTION SURVEY

CATEGORY	CUSTOMER SATISFACTION RESPONSE	
Survey Conducted Date	The date the survey was conducted	12/5/2012
Survey Interviewer	The survey interviewer is the person who initiated the survey.	FRANCISCO CASTILLO (HB85312)
Customer Participation	Did the customer participate in this survey? (Y/N)	Yes
Customer Representative	Enter the Customer representative name	WC WILSON
HSE	Was our HSE performance satisfactory? Circle Y or N	Yes
Equipment	Were you satisfied with our Equipment? Circle Y or N	Yes
Personnel	Were you satisfied with our people? Circle Y or N	Yes
Customer Comment	Customer's Comment	

<b>CUSTOMER SIGNATURE</b>
---------------------------

<b>Sales Order #:</b> 9954190	<b>Line Item:</b> 10	<b>Survey Conducted Date:</b> 12/5/2012
<b>Customer:</b> WPX ENERGY ROCKY MOUNTAIN LLC-EBUS		<b>Job Type (BOM):</b> CMT SURFACE CASING BOM
<b>Customer Representative:</b> WC WILSON		<b>API / UWI: (leave blank if unknown)</b> 05-045-20058
<b>Well Name:</b> PA		<b>Well Number:</b> 44-5
<b>Well Type:</b> Development Well	<b>Well Country:</b> United States of America	
<b>H2S Present:</b> No	<b>Well State:</b> Colorado	<b>Well County:</b> Garfield

### KEY PERFORMANCE INDICATORS

General	
<b>Survey Conducted Date</b> The date the survey was conducted	12/5/2012

Cementing KPI Survey	
<b>Type of Job</b> Select the type of job. (Cementing or Non-Cementing)	0
<b>Select the Maximum Deviation range for this Job</b> What is the highest deviation for the job you just completed? This may not be the maximum well deviation.	Vertical
<b>Total Operating Time (hours)</b> Total Operating Hours Including Rig-up, Pumping, Rig-down. Enter in decimal format.	6.5
<b>HSE Incident, Accident, Injury</b> HSE Incident, Accident, Injury. This should be recordable incidents only.	No
<b>Was the job purpose achieved?</b> Was the job delivered correctly as per customer agreed design?	Yes
<b>Operating Hours (Pumping Hours)</b> Total number of hours pumping fluid on this job. Enter in decimal format.	1
<b>Customer Non-Productive Rig Time (hrs)</b> Lost time due to Halliburton in the start, execution, or completion of an ordered service or product, or delays in a follow-on service. Enter in decimal format. 0 if none.	0
<b>Type of Rig Classification Job Was Performed</b> Type Of Rig (classification) Job Was Performed On	Drilling Rig (Portable)
<b>Number Of JSAs Performed</b> Number Of Jsas Performed	5
<b>Number of Unplanned Shutdowns</b> Unplanned shutdown is when injection stops for any period of time.	0
<b>Was this a Primary Cement Job (Yes / No)</b>	Yes

<b>Sales Order #:</b> 9954190	<b>Line Item:</b> 10	<b>Survey Conducted Date:</b> 12/5/2012
<b>Customer:</b> WPX ENERGY ROCKY MOUNTAIN LLC-EBUS		<b>Job Type (BOM):</b> CMT SURFACE CASING BOM
<b>Customer Representative:</b> WC WILSON		<b>API / UWI: (leave blank if unknown)</b> 05-045-20058
<b>Well Name:</b> PA		<b>Well Number:</b> 44-5
<b>Well Type:</b> Development Well	<b>Well Country:</b> United States of America	
<b>H2S Present:</b> No	<b>Well State:</b> Colorado	<b>Well County:</b> Garfield

Primary Cement Job= Casing job, Liner job, or Tie-back job.	
<b>Did We Run Wiper Plugs?</b> Did We Run Top And Bottom Casing Wiper Plugs?	Top
<b>Mixing Density of Job Stayed in Designed Density Range (0-100%)</b> Density Range defined as +/- .20 ppg. Calculation: Total BBLs cement mixed at designed density divided by total BBLs of cement multiplied by 100	90
<b>Was Automated Density Control Used?</b> Was Automated Density Control (ADC) Used ?	Yes
<b>Pump Rate (percent) of Job Stayed At Designed Pump Rate</b> Pump Rate range defined as +/- 1bbl/min. Calculation: Total BBLs of fluid pumped at the designed rate divided by Total BBLs of fluid pumped, multiplied by 100	90
<b>Nbr of Remedial Sqz Jobs Rqd - Competition</b> Number Of Remedial Squeeze Jobs Required After Primary Job Performed By Competition	0
<b>Nbr of Remedial Plug Jobs Rqd - HES</b> Number Of Remedial Plug Jobs Needed After Primary Plug Pumped By HES	0
<b>Nbr of Remedial Sqz Jobs Rqd - HES</b> Number Of Remedial Squeeze Jobs Required After Primary Job Performed By HES	0