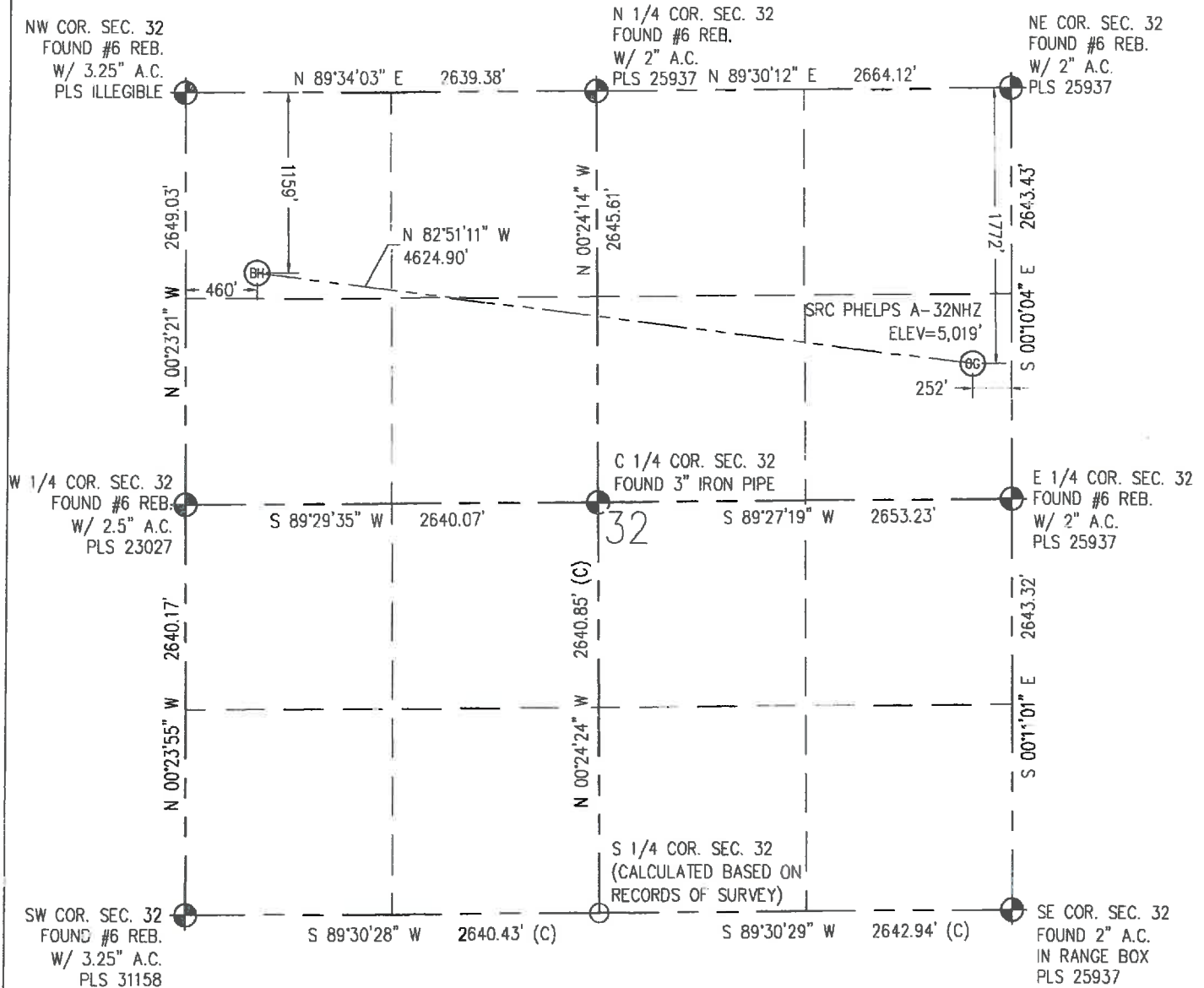


WELL LOCATION CERTIFICATE
THIS MAP DOES NOT REPRESENT A BOUNDARY SURVEY

0 1000
Scale 1" = 1000 ft

IN ACCORDANCE WITH A REQUEST FROM CRAIG RASMUSON - SYNERGY RESOURCES, BASELINE ENGINEERING CORP. HAS DETERMINED THE LOCATION OF THE SRC PHELPS A-32NHZ TO BE 1,772' FNL AND 252' FEL, AS MEASURED AT NINETY (90) DEGREES FROM THE SECTION LINE OF SECTION 32, TOWNSHIP 1 NORTH, RANGE 66 WEST AND THE BOTTOM HOLE LOCATION TO BE 1,159' FNL AND 460' FNL OF SECTION 32, TOWNSHIP 1 NORTH, RANGE 66 WEST, 6TH PRINCIPAL MERIDIAN, WELD COUNTY, COLORADO.

I HEREBY CERTIFY THAT THIS WELL LOCATION CERTIFICATE WAS PREPARED BY ME, OR UNDER MY DIRECT SUPERVISION, THAT THE FIELD WORK WAS COMPLETED ON 5/2/2013, THAT IT IS NOT A LAND SURVEY PLAT OR AN IMPROVEMENT SURVEY PLAT, AND THAT IT IS NOT TO BE RELIED UPON FOR ESTABLISHMENT OF FENCE, BUILDING, OR OTHER FUTURE IMPROVEMENT LINES.

NOTES:

- 1) LAT/LONG SHOWN ARE BASED ON A GPS OBSERVATION (NAD83).
- 2) BEARINGS SHOWN ARE GRID BEARINGS OF THE COLORADO STATE PLANE COORDINATE SYSTEM, NORTH ZONE, NORTH AMERICAN DATUM 1983/2007.
- 3) GROUND ELEVATIONS ARE BASED ON A GPS OBSERVATION (NAVD 88 DATUM).
- 4) ALL DISTANCES SHOWN ARE FIELD MEASURED UNLESS OTHERWISE NOTED.
- 5) THE NEAREST EXISTING WELL IS: EMMA DELVENTAL GAS UNIT #1 675' SOUTHWEST.
- 6) IMPROVEMENTS: SEE LOCATION DRAWING EXHIBIT FOR ALL VISIBLE IMPROVEMENTS WITHIN 600' OF WELL HEAD.
- 7) SURFACE USE: NATURAL GROUND.

NOTICE: According to Colorado law you MUST commence any legal action based upon any defect in this W.L.C. within three years after you first discover such defect. In no event may any action based upon any defect in this W.L.C. be commenced more than ten years from this said date of the certification show hereon.

SURFACE HOLE:
LATITUDE: 40.010083° N
LONGITUDE: 104.792375° W
PDOP: 1.3
1/4, 1/4: SE1/4NE1/4
NEAREST PROPERTY LINE: 252' N

BOTTOM HOLE:
LATITUDE: 40.011761° N
LONGITUDE: 104.808737° W

LEGEND

- - FOUND/SET SURVEY MONUMENT PER MONUMENT RECORD EXCEPTIONS NOTED
- - CALCULATED SURVEY MONUMENT POSITION
- (C) - CALCULATED DIMENSION



AARON A. DEMO
Professional Land Surveyor Registration No. 38285
State of Colorado
FOR AND ON BEHALF OF BASELINE ENGINEERING CORP.

Completed
5/21/2013

JOB #:SYN01N66W32-01