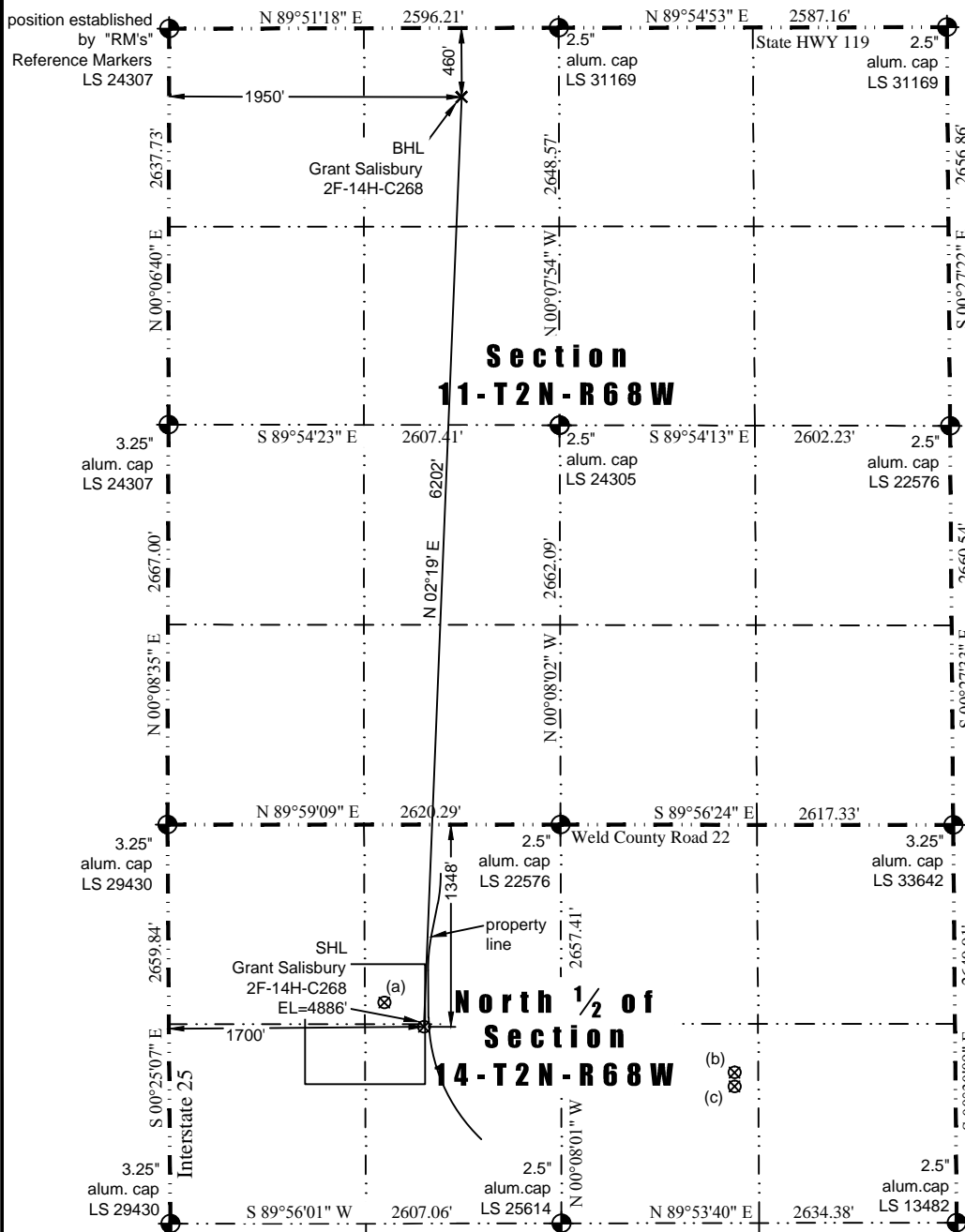


JR Land Surveying, LLC

8114 Northstar Drive
Windsor, Colorado 80528
P. 970-576-4641

WELL LOCATION CERTIFICATE

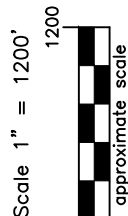
THIS MAP DOES NOT REPRESENT A BOUNDARY SURVEY



(a) Existing Well Data:
Olander #2
Latitude: N 40.14279°
Longitude: W 104.97463°
FNL: 1186'
FWL: 1436'
ELEV: 4890'
PDOP: 2.0

(b) Existing Well Data:
Stanley Olsen #1
Latitude: N 40.14147°
Longitude: W 104.96629°
FNL: 1651'
FEL: 1471'
ELEV: 4884'
PDOP: 1.7

(c) Existing Well Data:
Stanley Olsen #2
Latitude: N 40.14122°
Longitude: W 104.96629°
FNL: 1744'
FEL: 1474'
ELEV: 4883'
PDOP: 1.7



LEGEND
— found survey monument
— calculated dimension
⊗ (c)

Nearest:
Building: 753' northwest
Above Ground Utility: 1,320' northwest
Public Road: 1,334' north
Railroad: 17,153' northwest
Property Line: 32' northeast
Well Window: SHL is 6' inside
Existing Well: Olander #2, 311' northwest

In accordance with a request from Jay Knutson of EnCana Oil & Gas (USA) Inc., JR Land Surveying, LLC has determined the location of the **Grant Salisbury 2F-14H-C268** well site to be SHL: 1348' FNL and 1700' FWL, (BHL: 460' FNL and 1950' FWL), as measured at ninety (90) degrees from the section lines of Sections 11 and 14, Township 2 North, Range 68 West of the 6th Principal Meridian, Weld County Colorado.

Proposed Surface Hole Data:

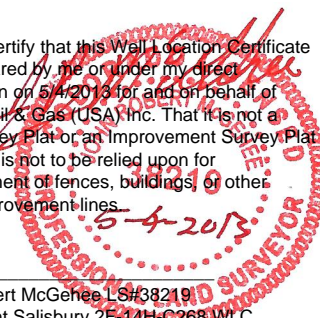
Latitude: N 40.14234° (BHL: 40.15935°)
Longitude: W 104.97369° (BHL: 104.97266°)
PDOP: 2.0

Notes:

- 1) Bearings and distances based on NAD 83 Colorado North State Plane Coordinate, using RTK GPS observations taken 5/3/13 by operator John Rice.
- 2) Conversion factor to ground (1.000285153).
- 3) Elevations based on NAVD 88 GPS heights and Geoid 2003 corrections.
- 4) See Location Drawing for visible improvements within 500 feet of Pad Site.
- 5) The surface use is a cultivated field.

NOTICE: According to Colorado law you must commence any legal action based upon any defect in this W.L.C. within three years after you first discover such defect. In no event may any action based upon any defect in this W.L.C. be commenced more than ten years from this said date of the certification shown hereon.

I hereby certify that this Well Location Certificate was prepared by me or under my direct supervision on 5/4/2013 for and on behalf of EnCana Oil & Gas (USA) Inc. That it is not a Land Survey Plat or an Improvement Survey Plat and that it is not to be relied upon for establishment of fences, buildings, or other future improvement lines.



John Robert McGehee LS#38219
Well: Grant Salisbury 2F-14H-C268 WLC