



WARRIOR
ENERGY SERVICES

CEMENT BOND LOG
GAMMA RAY
CCL

Company: KERR-McGEE OIL & GAS ONSHORE LP
Well: COLAND 41-17
Field: WATTENBERG
County: WELD
State: COLORADO

Location: AP F : 05-123-30227
Other Services:

Company: KERR-McGEE OIL & GAS ONSHORE LP
Well: COLAND 41-17
Field: WATTENBERG
County: WELD
State: COLORADO

Location: AP F : 05-123-30227
Other Services:

SEC 16 TWP 3N RGE 60W
Elevation: 4900
K.B. 4615
D.F. 4614
G.L. 4600

Permanent Datum: KB
Log Measured From: KB
Datum Measured From: KB
Elevation: 4900

Date: 05/06
Run Number: 1534
Depth: 1534
Bottom Log Depth: 1530
Top Log Interval: 50
Type of Fluid: WATER
Density / Viscosity: NA
Max Recorder Temp: 1.0
General Remarks: (99
Time Well Started: NA
Time Well Stopped: NA

Line Logger on Bottom: 5432
Equipment Number: 62427
Operator: M. ANSBERG
Recorded By: B. SMITH
Checked By: B. SMITH
Run Number: 1534
Run Date: 05/06
TWO: 8090

Run Number: 1534
Run Date: 05/06
TWO: 8090

Casein Record: 8.58
Subsiding String: 0
Production String: 0
Weight: 0
Top: 0
Bottom: 830

Company: KERR-McGEE OIL & GAS ONSHORE LP
Well: COLAND 41-17
Field: WATTENBERG
County: WELD
State: COLORADO

Location: AP F : 05-123-30227
Other Services:

SEC 16 TWP 3N RGE 60W
Elevation: 4900
K.B. 4615
D.F. 4614
G.L. 4600

Permanent Datum: KB
Log Measured From: KB
Datum Measured From: KB
Elevation: 4900

Date: 05/06
Run Number: 1534
Depth: 1534
Bottom Log Depth: 1530
Top Log Interval: 50
Type of Fluid: WATER
Density / Viscosity: NA
Max Recorder Temp: 1.0
General Remarks: (99
Time Well Started: NA
Time Well Stopped: NA

Line Logger on Bottom: 5432
Equipment Number: 62427
Operator: M. ANSBERG
Recorded By: B. SMITH
Checked By: B. SMITH
Run Number: 1534
Run Date: 05/06
TWO: 8090

Run Number: 1534
Run Date: 05/06
TWO: 8090

Casein Record: 8.58
Subsiding String: 0
Production String: 0
Weight: 0
Top: 0
Bottom: 830

<<< Fold Here >>>

All interpretations are opinions based on inferences from electrical or other measurements and we cannot and do not guarantee the accuracy or correctness of any interpretation, and we shall not, except in the case of gross or willful negligence on our part, be liable or responsible for any loss, costs, damages, or expenses incurred or sustained by anyone resulting from any interpretation made by any of our officers, agents or employees. These interpretations are also subject to our general terms and conditions set out in our current Price Schedule.

Comments

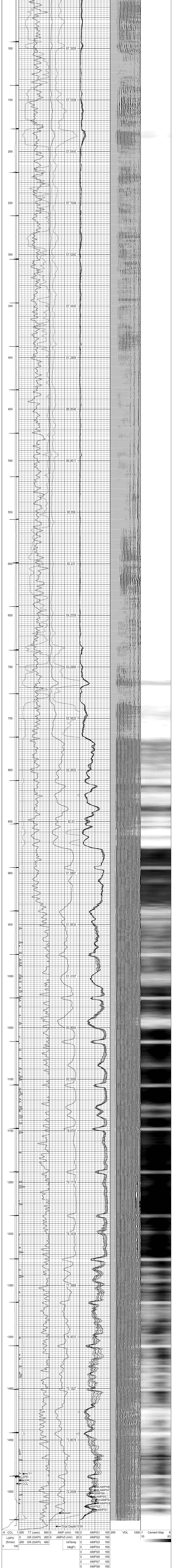
NOT CORRELATED

THANK YOU FOR USING WARRIOR ENERGY SERVICES!!!!

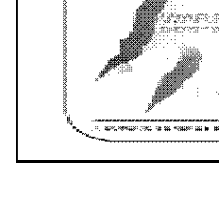
Dataset: coland 41-17.db; field/well/run1/pass2
Total Length: 17.42 ft
Total Weight: 201.00 lb
O.D.: 2.75 in

Database File: coland 41-17.db
Dataset Pathname: pass2
Presentation Format: ips_rbt
Dataset Creation: Wed May 01 07:02:42 2013 by Log 7.0 B1
Charted by: Depth in Feet scaled 1.240

-6 CCL	1200	TT (usec)	800	0	AMP (mV)	20	0	AMPS1	100	200	VDL	1200	1	Cement Map	8
LSPD	0	GR (GAPI)	200	0	AMPx5 (mV)	100	0	AMPS2	100						
	0	GR (GAPI)	400		IntTemp	0		AMPS3	100						
					(degF)	0		AMPS4	100						
						0		AMPS5	100						
						0		AMPS6	100						
						0		AMPS7	100						
						0		AMPS8	100						



Company: KERR-McGEE OIL & GAS ONSHORE LP
Well: COLAND 41-17
Field: WATTENBERG
County: WELD
State: COLORADO



WARRIOR
ENERGY SERVICES

Company: KERR-McGEE OIL & GAS ONSHORE LP
Well: COLAND 41-17
Field: WATTENBERG
County: WELD
State: COLORADO