
WPX ENERGY ROCKY MOUNTAIN LLC-EBUS

**PA 344-5
PARACHUTE
Garfield County , Colorado**

Cement Surface Casing
12-Dec-2012

Post Job Report

The Road to Excellence Starts with Safety

Sold To #: 300721	Ship To #: 2965002	Quote #:	Sales Order #: 900018412
Customer: WPX ENERGY ROCKY MOUNTAIN LLC-EBUS		Customer Rep: Towers, Ron	
Well Name: PA		Well #: 344-5	API/UWI #: 05-045-20086
Field: PARACHUTE	City (SAP): PARACHUTE	County/Parish: Garfield	State: Colorado
Lat: N 39.463 deg. OR N 39 deg. 27 min. 48.348 secs.		Long: W 108.007 deg. OR W -109 deg. 59 min. 35.264 secs.	
Contractor: NABORS 577		Rig/Platform Name/Num: NABORS 577	
Job Purpose: Cement Surface Casing			
Well Type: Development Well		Job Type: Cement Surface Casing	
Sales Person: MAYO, MARK		Srv Supervisor: WYCKOFF, RYAN	MBU ID Emp #: 476117

Job Personnel

HES Emp Name	Exp Hrs	Emp #	HES Emp Name	Exp Hrs	Emp #	HES Emp Name	Exp Hrs	Emp #
ANDERSON, ADAM S	10	456683	CHASTAIN, DERICK Allan	10	455848	WEAVER, CARLTON Russell	10	457698
WYCKOFF, RYAN Scott	10	476117						

Equipment

HES Unit #	Distance-1 way	HES Unit #	Distance-1 way	HES Unit #	Distance-1 way	HES Unit #	Distance-1 way
10616651C	60 mile	11021972	60 mile	11027039	60 mile	11583932	60 mile
11808827	60 mile						

Job Hours

Date	On Location Hours	Operating Hours	Date	On Location Hours	Operating Hours	Date	On Location Hours	Operating Hours
12/11/2012	2.5	0	12/12/2012	7.5	4			

TOTAL Total is the sum of each column separately

Job				Job Times			
Formation Name				Date	Time	Time Zone	
Formation Depth (MD)	Top	Bottom		Called Out	11 - Dec - 2012	07:00	MST
Form Type	BHST			On Location	11 - Dec - 2012	21:30	MST
Job depth MD	1201.2 ft			Job Started	12 - Dec - 2012	04:37	MST
Water Depth	Wk Ht Above Floor			Job Completed	12 - Dec - 2012	05:50	MST
Perforation Depth (MD)	From	To		Departed Loc	12 - Dec - 2012	07:30	MST

Well Data

Description	New / Used	Max pressure psig	Size in	ID in	Weight lbm/ft	Thread	Grade	Top MD ft	Bottom MD ft	Top TVD ft	Bottom TVD ft
-------------	------------	-------------------	---------	-------	---------------	--------	-------	-----------	--------------	------------	---------------

Sales/Rental/3rd Party (HES)

Description	Qty	Qty uom	Depth	Supplier
PLUG,CMTG,TOP,9 5/8,HWE,8.16 MIN/9.06 MA	1	EA		

Tools and Accessories

Type	Size	Qty	Make	Depth	Type	Size	Qty	Make	Depth	Type	Size	Qty	Make
Guide Shoe					Packer					Top Plug	9 5/8	1	HES
Float Shoe					Bridge Plug					Bottom Plug			
Float Collar					Retainer					SSR plug set			
Insert Float										Plug Container	9 5/8	1	HES
Stage Tool										Centralizers			

Miscellaneous Materials

Gelling Agt	Conc	Surfactant	Conc	Acid Type	Qty	Conc	%
Treatment Fld	Conc	Inhibitor	Conc	Sand Type	Size		Qty

Fluid Data

Stage/Plug #: 1									
Fluid #	Stage Type	Fluid Name	Qty	Qty uom	Mixing Density lbm/gal	Yield ft ³ /sk	Mix Fluid Gal/sk	Rate bbl/min	Total Mix Fluid Gal/sk

Stage/Plug #: 1									
Fluid #	Stage Type	Fluid Name	Qty	Qty uom	Mixing Density lbm/gal	Yield ft ³ /sk	Mix Fluid Gal/sk	Rate bbl/min	Total Mix Fluid Gal/sk
1	Water Spacer		20.00	bbl	8.33	.0	.0	.0	
2	Lead Cement	VERSACEM (TM) SYSTEM (452010)	160.0	sacks	12.3	2.38	13.75		13.75
3	Tail Cement	VERSACEM (TM) SYSTEM (452010)	160.0	sacks	12.8	2.11	11.75		11.75
4	Displacement		91.1	bbl	8.33	.0	.0	.0	
Calculated Values		Pressures		Volumes					
Displacement	91.1	Shut In: Instant		Lost Returns	0	Cement Slurry	128	Pad	
Top Of Cement	0	5 Min		Cement Returns	24	Actual Displacement	91.1	Treatment	
Frac Gradient		15 Min		Spacers	20	Load and Breakdown		Total Job	238
Rates									
Circulating		Mixing	5	Displacement	10	Avg. Job		8	
Cement Left In Pipe	Amount	44.22 ft	Reason	Shoe Joint					
Frac Ring # 1 @	ID	Frac ring # 2 @	ID	Frac Ring # 3 @	ID	Frac Ring # 4 @	ID		
The Information Stated Herein Is Correct				Customer Representative Signature					

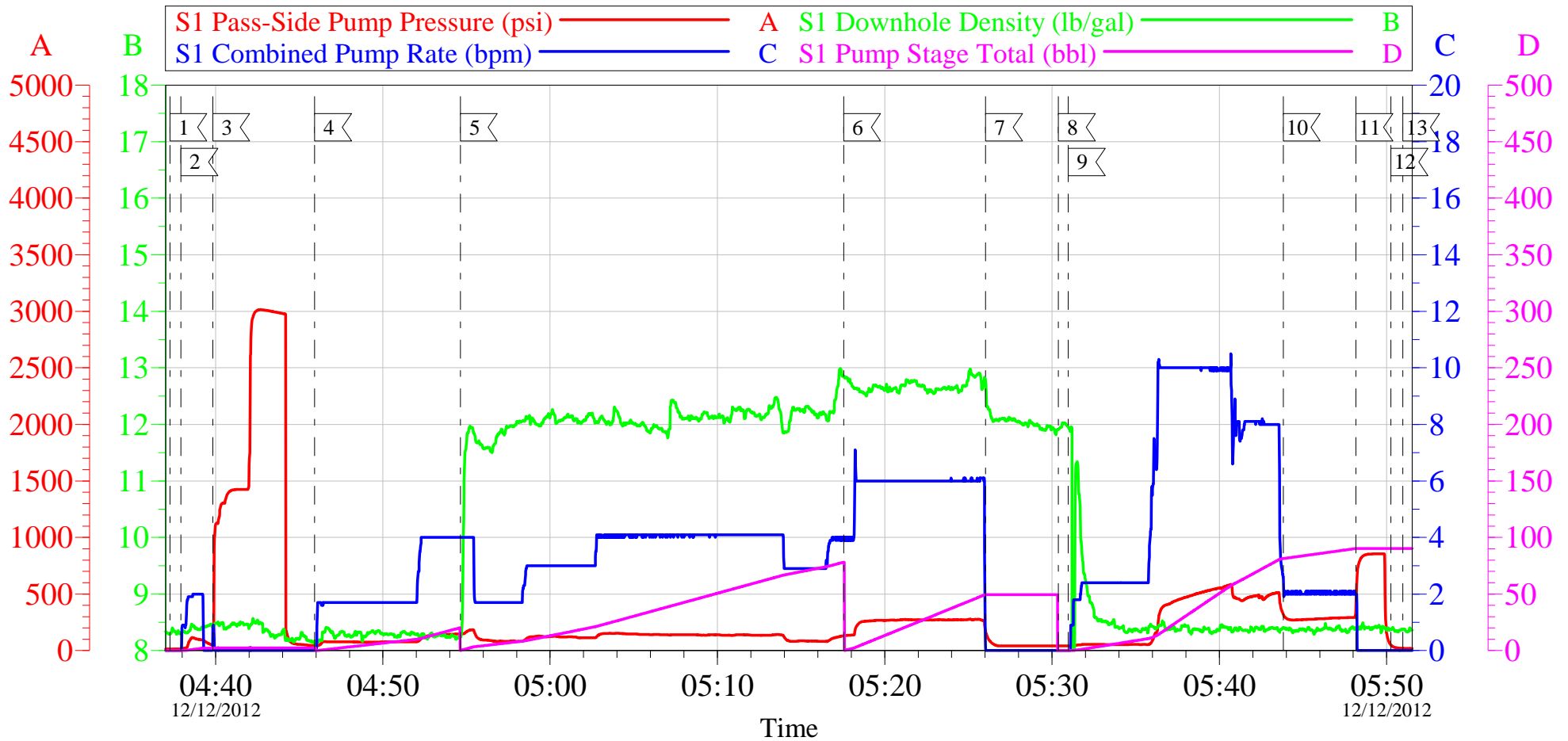
The Road to Excellence Starts with Safety

Sold To #: 300721		Ship To #: 2965002		Quote #:		Sales Order #: 900018412	
Customer: WPX ENERGY ROCKY MOUNTAIN LLC-EBUS				Customer Rep: Towers, Ron			
Well Name: PA			Well #: 344-5			API/UWI #: 05-045-20086	
Field: PARACHUTE		City (SAP): PARACHUTE		County/Parish: Garfield		State: Colorado	
Legal Description:							
Lat: N 39.463 deg. OR N 39 deg. 27 min. 48.348 secs.				Long: W 108.007 deg. OR W -109 deg. 59 min. 35.264 secs.			
Contractor: NABORS 577			Rig/Platform Name/Num: NABORS 577				
Job Purpose: Cement Surface Casing						Ticket Amount:	
Well Type: Development Well			Job Type: Cement Surface Casing				
Sales Person: MAYO, MARK			Srvc Supervisor: WYCKOFF, RYAN			MBU ID Emp #: 476117	

Activity Description	Date/Time	Cht #	Rate bbl/min	Volume bbl		Pressure psig		Comments
				Stage	Total	Tubing	Casing	
Call Out	12/11/2012 19:00							ELITE # 4
Pre-Convoy Safety Meeting	12/11/2012 20:00							ALL HES EMPLOYEES
Arrive At Loc	12/11/2012 21:30							ARRIVE AT LOCATION AT 21:30 RIG WAS PULLING DP, WAIT OFF LOCATION UNTIL RUNNING CASING
Assessment Of Location Safety Meeting	12/11/2012 21:45							ALL HES EMPLOYEES
Pre-Rig Up Safety Meeting	12/12/2012 01:03							ALL HES EMPLOYEES
Rig-Up Equipment	12/12/2012 02:00							1 HT 400 PUMP TRUCK (ELITE), 1-660 BULK TRUCK, 1 F-550 PICKUP
Pre-Job Safety Meeting	12/12/2012 04:15							ALL HES EMPLOYEES AND RIG CREW
Rig-Up Completed	12/12/2012 04:30							
Start Job	12/12/2012 04:37							TD 1215', TP 1201.16', SHOE 44.22', OH 13 1/2, CSG 9 5/8 32#, MUD 9.7 PPG
Pressure Test	12/12/2012 04:39					3013.0		PRESSURE TEST PUMPS AND LINES TO 3000 PSI
Pump Spacer	12/12/2012 04:45		4	20	20		145.0	PUMP 20 BBLS FRESH WATER SPACER
Activity Description	Date/Time	Cht #	Rate bbl/min	Volume bbl		Pressure psig		Comments
				Stage	Total	Tubing	Casing	

Pump Lead Cement	12/12/2012 04:54		4	67.8	67.8		151.0	160 SKS, 12.3 PPG, 2.38 YIELD, 13.75 GAL/SK, WEIGHT VERIFIED VIA MUD SCALES THROUGHOUT LEAD CEMENT, HAD MIXING ISSUES DUE TO DOWN HOLE DENSOMETER AND BULK DELIVERY ISSUES
Pump Tail Cement	12/12/2012 05:17		6	60.1	60.1		286.0	160 SKS, 12.8 PPG, 2.11 YIELD, 11.75 GAL/SL, WEIGHT VERIFIED VIA MUD SCALES THROUGHOUT TAIL CEMENT
Shutdown	12/12/2012 05:26							
Drop Plug	12/12/2012 05:30							PLUG AWAY NO ISSUES, WASH-UP ON TOP OF PLUG AS PER COMPANY REP
Pump Displacement	12/12/2012 05:30		10	91.1	91.1		488.0	PUMP FRESH WATER DISPLACEMENT
Slow Rate	12/12/2012 05:43		4	81.1	81.1		290.0	SLOW RATE TO BUMP PLUG
Bump Plug	12/12/2012 05:48		4	91.1	91.1		850.0	BUMP PLUG AT 290 PSI, PRESSURED UP TO 850 PSI, 24 BBLS OF CEMENT BACK TO SURFACE
Check Floats	12/12/2012 05:50							FLOATS HELD, 1/2 BBL BACK TO DISPLACEMENT TANK
End Job	12/12/2012 05:50							NO ADD HOURS, NO DERICK CHARGE, 40# OF SUGAR
Pre-Rig Down Safety Meeting	12/12/2012 06:00							ALL HES EMPLOYEES
Rig-Down Equipment	12/12/2012 06:10							
Pre-Convoy Safety Meeting	12/12/2012 07:15							ALL HES EMPLOYEES
Crew Leave Location	12/12/2012 07:30							THANK YOU FOR USING HALLIBURTON CEMENT RYAN WYCKOFF AND CREW

WPX PA 344-5 9 5/8" SURFACE

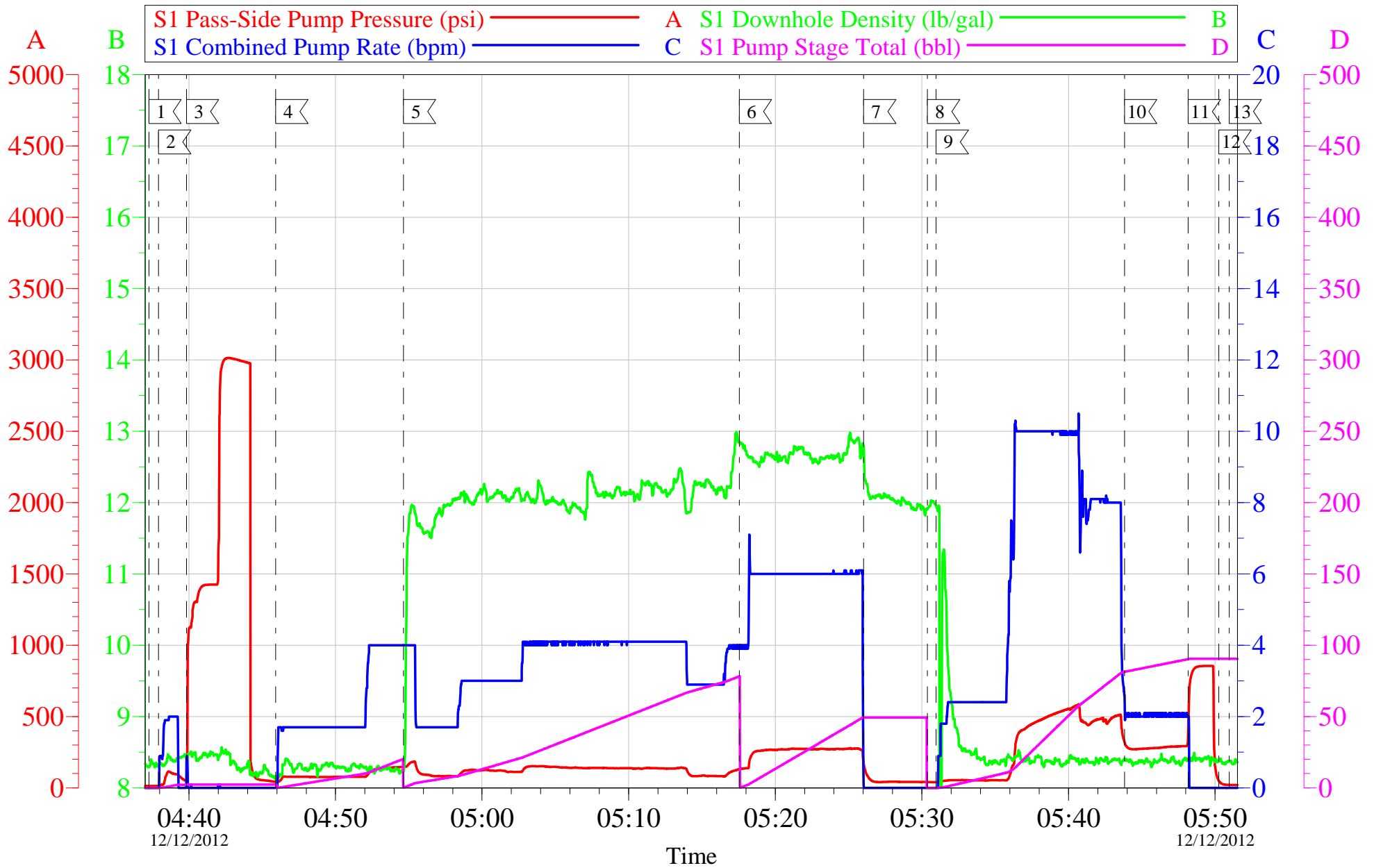


Local Event Log			
1 START JOB	04:37:16	2 FILL LINES	04:37:56
3 PRESSURE TEST	04:39:50	4 PUMP H2O SPACER	04:45:55
5 PUMP LEAD CEMENT	04:54:38	6 PUMP TAIL CEMENT	05:17:33
7 SHUTDOWN	05:26:02	8 DROP PLUG	05:30:23
9 PUMP DISPLACEMENT	05:30:58	10 SLOW RATE	05:43:49
11 BUMP PLUG	05:48:10	12 CHECK FLOATS	05:50:16
13 END JOB	05:50:58		

Customer: WPX	Job Date: 12-Dec-2012	Sales Order #: 900018412
Well Description: PA 344-5	Job Type: SURFACE	ADC Used: YES
Company Rep: W.C. WILSON	Cement Supervisor: RYAN WYCKOFF	Elite # 4: RUSTY WEAVER

OptiCem v6.4.10
12-Dec-12 05:56

WPX PA 344-5 9 5/8" SURFACE



Customer: WPX
Well Description: PA 344-5
Company Rep: W.C. WILSON

Job Date: 12-Dec-2012
Job Type: SURFACE
Cement Supervisor: RYAN WYCKOFF

Sales Order #: 900018412
ADC Used: YES
Elite # 4: RUSTY WEAVER

OptiCem v6.4.10
12-Dec-12 05:56

HALLIBURTON

Water Analysis Report

Company: WPX

Submitted by: RYAN WYCKOFF

Attention: J. TROUT/C.MARTINEZ

Lease PA 344-5

Well # 344-5

Date: 12/11/2012

Date Rec.: 12/11/2012

S.O.# 900018412

Job Type: SURFACE

15-13-2219

Specific Gravity	<i>MAX</i>	1
pH	<i>8</i>	6.8
Potassium (K)	<i>5000</i>	400 Mg / L
Calcium (Ca)	<i>500</i>	Mg / L
Iron (FE2)	<i>300</i>	0 Mg / L
Chlorides (Cl)	<i>3000</i>	Mg / L
Sulfates (SO ₄)	<i>1500</i>	UNDER 200 Mg / L
Chlorine (Cl ₂)		Mg / L
Temp	<i>40-90</i>	50 Deg
Total Dissolved Solids		200 Mg / L

Respectfully: RYAN WYCKOFF

Title: CEMENTING SUPERVISOR

Location: Grand Junction, CO

NOTICE:

This report is limited to the described sample tested. Any person using or relying on this report agrees that Halliburton shall not be liable for any loss or damage whether due to act or omission resulting from such report or

Sales Order #: 900018412	Line Item: 10	Survey Conducted Date: 12/12/2012
Customer: WPX ENERGY ROCKY MOUNTAIN LLC-EBUS		Job Type (BOM): CMT SURFACE CASING BOM
Customer Representative: W.C. WILSON		API / UWI: (leave blank if unknown) 05-045-20086
Well Name: PA		Well Number: 344-5
Well Type: Development Well	Well Country: United States of America	
H2S Present: No	Well State: Colorado	Well County: Garfield

Dear Customer,

We hope that you were satisfied with the service quality of this job performed by Halliburton. It is the aim of our management and service personnel to deliver equipment and service of a standard unmatched in the service sector of the energy industry.

Please take the time to let us know if our performance met with your satisfaction. Please be as critical as possible to ensure we constantly improve our service. Your comments are of great value to us and are intended for the exclusive use of Halliburton.

CUSTOMER SATISFACTION SURVEY

CATEGORY	CUSTOMER SATISFACTION RESPONSE	
Survey Conducted Date	The date the survey was conducted	12/12/2012
Survey Interviewer	The survey interviewer is the person who initiated the survey.	RYAN WYCKOFF (HB47901)
Customer Participation	Did the customer participate in this survey? (Y/N)	Yes
Customer Representative	Enter the Customer representative name	W.C. WILSON
HSE	Was our HSE performance satisfactory? Circle Y or N	Yes
Equipment	Were you satisfied with our Equipment? Circle Y or N	Yes
Personnel	Were you satisfied with our people? Circle Y or N	Yes
Customer Comment	Customer's Comment	

CUSTOMER SIGNATURE

Sales Order #: 900018412	Line Item: 10	Survey Conducted Date: 12/12/2012
Customer: WPX ENERGY ROCKY MOUNTAIN LLC-EBUS		Job Type (BOM): CMT SURFACE CASING BOM
Customer Representative: W.C. WILSON		API / UWI: (leave blank if unknown) 05-045-20086
Well Name: PA		Well Number: 344-5
Well Type: Development Well	Well Country: United States of America	
H2S Present: No	Well State: Colorado	Well County: Garfield

KEY PERFORMANCE INDICATORS

General	
Survey Conducted Date The date the survey was conducted	12/12/2012

Cementing KPI Survey	
Type of Job Select the type of job. (Cementing or Non-Cementing)	0
Select the Maximum Deviation range for this Job What is the highest deviation for the job you just completed? This may not be the maximum well deviation.	Vertical
Total Operating Time (hours) Total Operating Hours Including Rig-up, Pumping, Rig-down. Enter in decimal format.	4
HSE Incident, Accident, Injury HSE Incident, Accident, Injury. This should be recordable incidents only.	No
Was the job purpose achieved? Was the job delivered correctly as per customer agreed design?	Yes
Operating Hours (Pumping Hours) Total number of hours pumping fluid on this job. Enter in decimal format.	2
Customer Non-Productive Rig Time (hrs) Lost time due to Halliburton in the start, execution, or completion of an ordered service or product, or delays in a follow-on service. Enter in decimal format. 0 if none.	0
Type of Rig Classification Job Was Performed Type Of Rig (classification) Job Was Performed On	Drilling Rig (Portable)
Number Of JSAs Performed Number Of Jsas Performed	6
Number of Unplanned Shutdowns Unplanned shutdown is when injection stops for any period of time.	0
Was this a Primary Cement Job (Yes / No)	Yes

Sales Order #: 900018412	Line Item: 10	Survey Conducted Date: 12/12/2012
Customer: WPX ENERGY ROCKY MOUNTAIN LLC-EBUS		Job Type (BOM): CMT SURFACE CASING BOM
Customer Representative: W.C. WILSON		API / UWI: (leave blank if unknown) 05-045-20086
Well Name: PA		Well Number: 344-5
Well Type: Development Well	Well Country: United States of America	
H2S Present: No	Well State: Colorado	Well County: Garfield

Primary Cement Job= Casing job, Liner job, or Tie-back job.	
Did We Run Wiper Plugs? Did We Run Top And Bottom Casing Wiper Plugs?	Top
Mixing Density of Job Stayed in Designed Density Range (0-100%) Density Range defined as +/- .20 ppg. Calculation: Total BBLs cement mixed at designed density divided by total BBLs of cement multiplied by 100	90
Was Automated Density Control Used? Was Automated Density Control (ADC) Used ?	Yes
Pump Rate (percent) of Job Stayed At Designed Pump Rate Pump Rate range defined as +/- 1bbl/min. Calculation: Total BBLs of fluid pumped at the designed rate divided by Total BBLs of fluid pumped, multiplied by 100	90
Nbr of Remedial Sqz Jobs Rqd - Competition Number Of Remedial Squeeze Jobs Required After Primary Job Performed By Competition	0
Nbr of Remedial Plug Jobs Rqd - HES Number Of Remedial Plug Jobs Needed After Primary Plug Pumped By HES	0
Nbr of Remedial Sqz Jobs Rqd - HES Number Of Remedial Squeeze Jobs Required After Primary Job Performed By HES	0