

Noble Energy

Weld County, CO (NAD 83)

Sec. 8-T6N-R62W (Wells Ranch 8 North PAD)

Wells Ranch AE08-68-1HN

MWD Surveys

Sperry Drilling Services

Final Survey Report

04 January, 2013

Well Coordinates: 1,428,634.69 N, 3,318,408.51 E (40° 30' 15.70" N, 104° 21' 17.82" W)

Ground Level: -4,987.00 ft

Local Coordinate Origin: Centered on Well Wells Ranch AE08-68-1HN - Slot A

Viewing Datum: KB=30' @ 5017.00ft (H&P 321)

TVDs to System: N

North Reference: Grid

Unit System: API - US Survey Feet - Custom

Geodetic Scale Factor Applied

Version: 2003.16 Build: 431

HALLIBURTON

Design Report for Wells Ranch AE08-68-1HN - MWD Surveys

Measured Depth (ft)	Inclination (°)	Azimuth (°)	Vertical Depth (ft)	+N/-S (ft)	+E/-W (ft)	Vertical Section (ft)	Dogleg Rate (°/100ft)
0.00	0.00	0.00	0.00	0.00	0.00	0.00	0.00
823.00	0.00	0.00	823.00	0.00	0.00	0.00	0.00
Tie On To Surface Casing Assumed Vertical							
898.00	0.65	303.98	898.00	0.24	-0.35	-0.32	0.87
First MWD Survey							
1,174.00	0.62	279.82	1,173.98	1.37	-3.12	-2.90	0.10
1,450.00	1.17	268.11	1,449.95	1.53	-7.41	-7.12	0.21
1,545.00	1.07	281.77	1,544.93	1.68	-9.25	-8.92	0.30
1,753.00	0.86	263.81	1,752.90	1.91	-12.70	-12.30	0.18
1,830.00	2.08	307.54	1,829.88	2.70	-14.38	-13.86	2.05
1,925.00	3.38	312.58	1,924.77	5.64	-17.81	-16.84	1.39
2,020.00	4.96	347.48	2,019.53	11.55	-20.77	-18.92	3.07
2,115.00	5.47	1.09	2,114.14	20.08	-21.57	-18.51	1.40
2,209.00	8.66	350.74	2,207.41	31.55	-22.62	-17.93	3.64
2,304.00	10.57	345.98	2,301.08	47.06	-25.89	-18.97	2.18
2,399.00	12.21	341.80	2,394.20	65.06	-31.14	-21.62	1.93
2,494.00	15.27	344.20	2,486.47	86.65	-37.68	-25.05	3.28
2,589.00	15.40	340.40	2,578.09	110.57	-45.32	-29.22	1.07
2,684.00	15.33	335.44	2,669.70	133.88	-54.77	-35.29	1.38
2,779.00	16.37	338.84	2,761.09	157.78	-64.82	-41.86	1.47
2,874.00	15.16	338.01	2,852.52	181.79	-74.31	-47.85	1.30
2,968.00	16.00	336.60	2,943.06	205.07	-84.07	-54.23	0.99
3,063.00	14.78	336.68	3,034.65	228.20	-94.09	-60.87	1.29
3,158.00	15.50	339.80	3,126.36	251.24	-103.27	-66.70	1.14
3,253.00	14.80	337.85	3,218.06	274.39	-112.23	-72.30	0.91
3,348.00	14.33	336.24	3,310.00	296.39	-121.54	-78.40	0.65
3,443.00	14.01	338.64	3,402.11	317.86	-130.47	-84.20	0.70
3,538.00	12.98	344.08	3,494.49	338.83	-137.58	-88.28	1.72
3,633.00	13.20	342.91	3,587.02	359.46	-143.70	-91.41	0.36
3,728.00	12.80	340.52	3,679.59	379.75	-150.39	-95.17	0.71
3,823.00	12.67	340.79	3,772.25	399.51	-157.33	-99.25	0.15
3,917.00	13.15	340.40	3,863.88	419.32	-164.31	-103.35	0.52
4,012.00	13.25	342.10	3,956.37	439.86	-171.28	-107.35	0.42
4,107.00	11.92	338.95	4,049.08	459.38	-178.15	-111.39	1.57
4,202.00	10.09	328.97	4,142.34	475.67	-185.97	-116.82	2.77
4,297.00	7.35	319.41	4,236.24	487.41	-194.21	-123.33	3.25
4,392.00	3.84	309.60	4,330.77	494.06	-200.62	-128.73	3.82
4,487.00	1.24	274.16	4,425.68	496.16	-204.10	-131.87	3.07
4,581.00	0.38	248.11	4,519.67	496.12	-205.40	-133.17	0.97
4,666.00	0.43	328.26	4,804.66	496.68	-206.84	-134.52	0.18
5,151.00	0.41	117.70	5,089.66	497.11	-206.50	-134.12	0.28
5,435.00	0.32	145.71	5,373.65	495.98	-205.15	-132.94	0.07
5,720.00	0.20	306.54	5,658.65	495.62	-205.10	-132.95	0.18
6,005.00	0.44	2.39	5,943.65	497.01	-205.46	-133.10	0.13
6,030.00	0.44	342.12	5,968.65	497.20	-205.48	-133.10	0.62
6,097.00	0.48	8.43	6,035.64	497.72	-205.52	-133.06	0.32
6,192.00	7.83	109.32	6,130.35	495.97	-199.35	-127.20	8.35
6,240.00	13.70	103.76	6,177.49	493.54	-190.73	-119.01	12.41
6,287.00	15.58	99.52	6,222.96	491.17	-179.10	-107.83	4.60
6,335.00	17.20	95.74	6,269.01	489.39	-165.68	-94.80	4.04

Design Report for Wells Ranch AE08-68-1HN - MWD Surveys

Measured Depth (ft)	Inclination (°)	Azimuth (°)	Vertical Depth (ft)	+N/-S (ft)	+E/-W (ft)	Vertical Section (ft)	Dogleg Rate (°/100ft)
6,382.00	20.07	94.59	6,313.54	488.05	-150.72	-80.18	6.16
6,430.00	22.78	90.49	6,358.22	487.31	-133.22	-62.96	6.45
6,477.00	26.95	87.11	6,400.86	487.77	-113.47	-43.35	9.37
6,525.00	30.61	87.37	6,442.92	488.88	-90.39	-20.34	7.63
6,572.00	35.17	87.69	6,482.38	489.98	-64.90	5.05	9.71
6,620.00	39.43	89.32	6,520.55	490.71	-35.83	33.93	9.11
6,666.00	43.70	88.72	6,554.96	491.24	-5.33	64.21	9.32
6,714.00	46.27	87.57	6,588.91	492.35	28.58	97.93	5.62
6,761.00	50.93	86.69	6,619.98	494.12	63.78	133.03	10.01
6,809.00	54.43	86.08	6,649.08	496.53	101.88	171.08	7.36
6,856.00	57.26	85.21	6,675.47	499.49	140.65	209.88	6.21
6,904.00	61.79	84.88	6,699.80	503.07	181.85	251.18	9.46
6,951.00	66.17	86.53	6,720.42	506.22	223.96	293.30	9.84
6,999.00	68.67	88.52	6,738.85	508.12	268.23	337.40	6.46
7,046.00	72.55	89.35	6,754.45	508.94	312.55	381.39	8.42
7,094.00	76.11	89.34	6,767.41	509.47	358.76	427.21	7.42
7,141.00	79.98	88.46	6,777.15	510.36	404.72	472.83	8.44
7,175.00	83.11	87.96	6,782.14	511.41	438.33	506.25	9.32
7,244.00	86.70	87.80	6,788.27	513.95	507.00	574.59	5.21
7,316.00	88.24	88.65	6,791.45	516.18	578.89	646.08	2.44
7,411.00	90.96	86.51	6,792.11	520.19	673.79	740.59	3.64
7,506.00	91.36	87.53	6,790.19	525.13	768.64	835.18	1.15
7,601.00	89.51	88.23	6,789.47	528.64	863.57	929.65	2.08
7,696.00	88.21	87.35	6,791.36	532.30	958.48	1,024.13	1.65
7,791.00	90.43	87.86	6,792.49	536.27	1,053.38	1,118.64	2.40
7,886.00	90.46	86.56	6,791.75	540.90	1,148.26	1,213.22	1.37
7,981.00	90.65	89.21	6,790.83	544.40	1,243.18	1,307.68	2.80
8,076.00	91.33	89.22	6,789.19	545.70	1,338.16	1,401.89	0.72
8,170.00	89.69	89.12	6,788.35	547.07	1,432.14	1,495.12	1.75
8,265.00	88.46	89.04	6,789.88	548.59	1,527.12	1,589.35	1.30
8,360.00	89.26	89.16	6,791.77	550.08	1,622.09	1,683.58	0.85
8,455.00	89.81	88.37	6,792.54	552.13	1,717.06	1,777.89	1.01
8,550.00	91.08	88.00	6,791.81	555.14	1,812.01	1,872.31	1.39
8,645.00	90.80	87.28	6,790.25	559.05	1,906.91	1,966.81	0.81
8,740.00	89.88	87.54	6,789.68	563.34	2,001.81	2,061.37	1.01
8,835.00	90.46	88.72	6,789.40	566.44	2,096.76	2,155.80	1.38
8,929.00	89.08	87.48	6,789.78	569.56	2,190.70	2,249.24	1.97
9,024.00	89.78	87.40	6,790.72	573.80	2,285.60	2,343.78	0.74
9,119.00	90.99	86.43	6,790.09	578.91	2,380.46	2,438.41	1.63
9,214.00	89.72	85.58	6,789.50	585.53	2,475.23	2,533.16	1.61
9,309.00	90.93	85.86	6,788.96	592.62	2,569.96	2,627.94	1.31
9,404.00	91.17	88.62	6,787.22	597.20	2,664.82	2,722.50	2.92
9,499.00	89.88	90.32	6,786.35	598.07	2,759.81	2,816.65	2.25
9,594.00	90.31	89.60	6,786.19	598.14	2,854.81	2,910.71	0.88
9,689.00	88.86	87.01	6,786.88	600.95	2,949.75	3,005.09	3.12
9,784.00	90.68	89.98	6,787.26	603.44	3,044.70	3,099.44	3.67
9,878.00	90.92	90.60	6,785.95	602.97	3,138.69	3,192.42	0.71
9,973.00	89.72	90.03	6,785.42	602.45	3,233.69	3,286.39	1.40
10,068.00	88.25	88.31	6,787.10	603.82	3,328.66	3,380.60	2.38
10,163.00	90.09	88.35	6,788.48	606.59	3,423.60	3,474.98	1.94
10,258.00	89.38	89.07	6,788.91	608.73	3,518.58	3,569.30	1.06

Design Report for Wells Ranch AE08-68-1HN - MWD Surveys

Measured Depth (ft)	Inclination (°)	Azimuth (°)	Vertical Depth (ft)	+N/-S (ft)	+E/-W (ft)	Vertical Section (ft)	Dogleg Rate (°/100ft)
10,353.00	88.92	88.97	6,790.32	610.35	3,613.55	3,663.55	0.50
10,448.00	90.34	88.30	6,790.94	612.62	3,708.52	3,757.89	1.65
10,543.00	91.57	88.10	6,789.35	615.60	3,803.46	3,852.29	1.31
10,638.00	92.28	87.60	6,786.16	619.16	3,898.34	3,946.72	0.91
10,732.00	91.94	87.84	6,782.70	622.90	3,992.20	4,040.17	0.44
10,827.00	90.06	87.78	6,781.04	626.53	4,087.11	4,134.64	1.98
10,922.00	91.33	88.33	6,779.89	629.75	4,182.05	4,229.08	1.46
11,017.00	93.21	87.57	6,776.13	633.15	4,276.91	4,323.46	2.13
11,112.00	94.97	87.10	6,769.35	637.55	4,371.56	4,417.78	1.92
11,139.00	95.77	86.64	6,766.83	639.02	4,398.40	4,444.56	3.41
Final MWD Survey							
11,201.00	95.77	86.64	6,760.59	642.64	4,459.98	4,506.04	0.00
Bit Projection - Estimated BHL 984'FNL 536'FEL							

Design Annotations

Measured Depth (ft)	Vertical Depth (ft)	Local Coordinates		Comment
		+N/-S (ft)	+E/-W (ft)	
823.00	823.00	0.00	0.00	Tie On To Surface Casing Assumed Vertical
898.00	898.00	0.24	-0.35	First MWD Survey
11,139.00	6,766.83	639.02	4,398.40	Final MWD Survey
11,201.00	6,760.59	642.64	4,459.98	Bit Projection
11,201.00	6,760.59	642.64	4,459.98	Estimated BHL 984'FNL 536'FEL

Vertical Section Information

Angle Type	Target	Azimuth (°)	Origin Type	Origin +N/_S (ft)	Origin +E/-W (ft)	Start TVD (ft)
Target	Wells Ranch AE08-68-1HN_PlanA - Rev0_B HL Tgt	81.87	Slot	0.00	0.00	0.00

Survey tool program

From (ft)	To (ft)	Survey/Plan	Survey Tool
823.00	11,201.00	Sperry MWD Surveys	MWD

Design Report for Wells Ranch AE08-68-1HN - MWD Surveys

Targets

Target Name - hit/miss target - Shape	Dip Angle (°)	Dip Dir. (°)	TVD (ft)	+N/-S (ft)	+E/-W (ft)	Northing (ft)	Easting (ft)	Latitude	Longitude
Wells Ranch	0.00	0.00	-1.00	36.43	-0.47	1,428,671.12	3,318,408.04	40° 30' 16.056 N	104° 21' 17.820 W
- actual wellpath misses target center by 36.44ft at 0.00ft MD (0.00 TVD, 0.00 N, 0.00 E)									
- Polygon									
Point 1				165.53	1,015.43	1,429,650.08	3,318,574.03		
Point 2				4,521.53	1,186.43	1,429,821.08	3,322,929.88		
Point 3				4,593.53	-3,168.57	1,425,466.22	3,323,001.88		
Point 4				239.53	-3,328.57	1,425,306.23	3,318,648.03		
Point 5				165.53	1,015.43	1,429,650.08	3,318,574.03		
Wells Ranch	0.00	0.00	6,787.19	637.32	4,460.95	1,429,271.99	3,322,869.31	40° 30' 21.420 N	104° 20' 19.968 W
- actual wellpath misses target center by 27.06ft at 11198.99ft MD (6760.80 TVD, 642.52 N, 4457.98 E)									
- Point									
Wells Ranch	0.00	0.00	-1.00	36.43	-0.47	1,428,671.12	3,318,408.04	40° 30' 16.056 N	104° 21' 17.820 W
- actual wellpath misses target center by 36.44ft at 0.00ft MD (0.00 TVD, 0.00 N, 0.00 E)									
- Polygon									
Point 1				-294.47	1,475.43	1,430,110.07	3,318,114.05		
Point 2				4,981.53	1,646.43	1,430,281.06	3,323,389.87		
Point 3				5,053.53	-3,628.57	1,425,006.24	3,323,461.87		
Point 4				-220.47	-3,788.57	1,424,846.24	3,318,188.04		
Point 5				-294.47	1,475.43	1,430,110.07	3,318,114.05		

North Reference Sheet for Sec. 8-T6N-R62W (Wells Ranch 8 North PAD) - Wells Ranch AE08-68-1HN

All data is in US Feet unless otherwise stated. Directions and Coordinates are relative to Grid North Reference.

Vertical Depths are relative to KB=30' @ 5017.00ft (H&P 321). Northing and Easting are relative to Wells Ranch AE08-68-1HN - Slot A2

Coordinate System is US State Plane 1983, Colorado Northern Zone using datum North American Datum 1983, ellipsoid GRS 1980

Projection method is Lambert Conformal Conic (2 parallel)

Central Meridian is 105° 30' 0.000 W°, Longitude Origin:0° 0' 0.000 E°, Latitude Origin:40° 47' 0.000 N°

False Easting: 3,000,000.00ft, False Northing: 1,000,000.00ft, Scale Reduction: 0.99996662

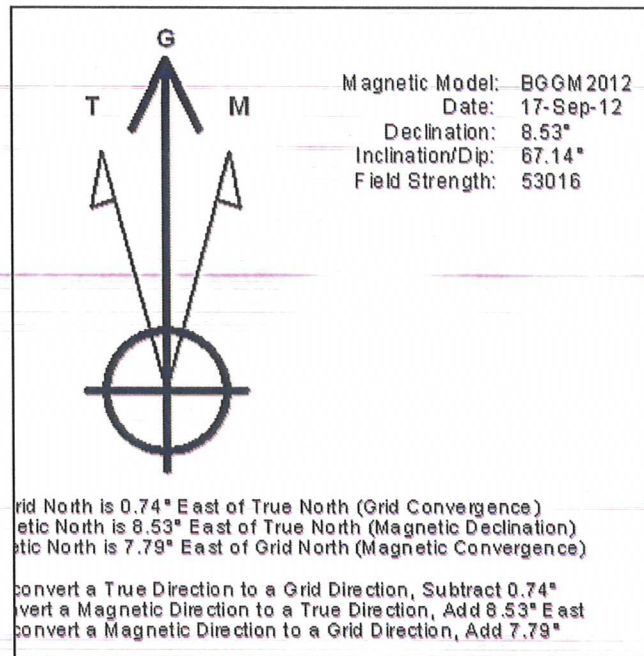
Grid Coordinates of Well: 1,428,634.69 ft N, 3,318,408.51 ft E

Geographical Coordinates of Well: 40° 30' 15.70" N, 104° 21' 17.82" W

Grid Convergence at Surface is: 0.74°

Based upon Minimum Curvature type calculations, at a Measured Depth of 11,201.00ft
the Bottom Hole Displacement is 4,506.04ft in the Direction of 81.80° (Grid).

Magnetic Convergence at surface is: -7.79° (17 September 2012, , BGGM2012)

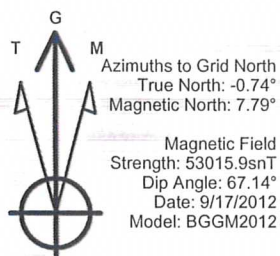


Project: Weld County, CO (NAD 83)
 Site: Sec. 8-T6N-R62W (Wells Ranch 8 North PAD)
 Well: Wells Ranch AE08-68-1HN

Noble Energy

HALLIBURTON

Sperry Drilling

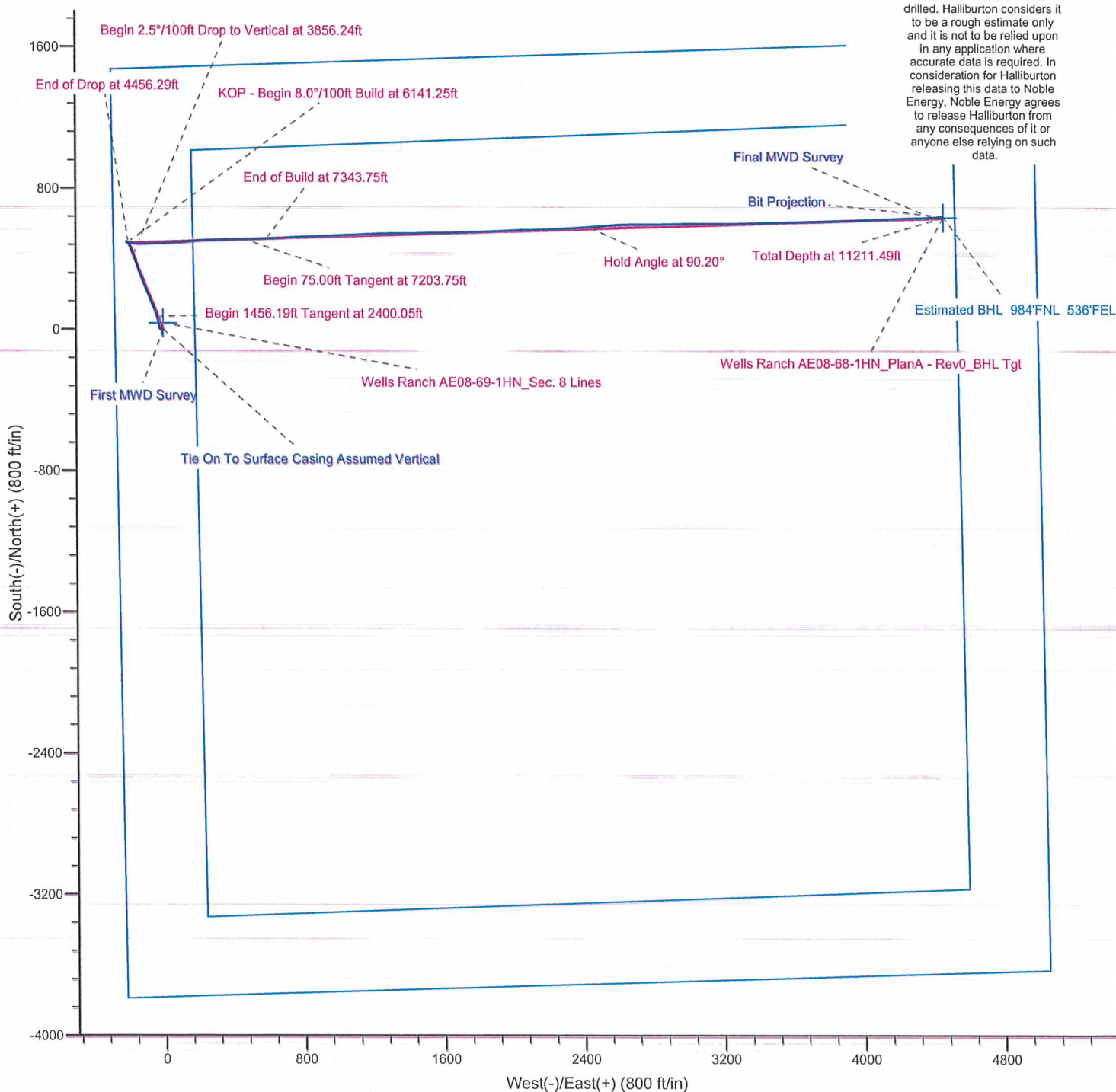


LEGEND

- Wells Ranch AE08-68-1HN, Plan A, Plan A - Rev 0 Proposal V0
- MWD Surveys

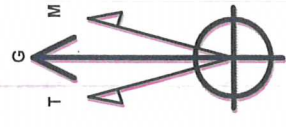
Permitted BHL: 990' FNL, 535' FEL

Halliburton Energy Services, Inc. ("Halliburton") recently completed directional drilling and MWD operations at the Wells Ranch AE08-68-1HN well located at Weld County, CO. At the conclusion of the job Halliburton performed a final survey on the well. Noble Energy has requested that Halliburton provide them the distances from BHL to section lines from that final survey to allow Noble Energy to meet its requirements under Colorado law. These distances are generated by a mathematical algorithm based on rough data collected after the well is drilled. Halliburton considers it to be a rough estimate only and it is not to be relied upon in any application where accurate data is required. In consideration for Halliburton releasing this data to Noble Energy, Noble Energy agrees to release Halliburton from any consequences of it or anyone else relying on such data.



Noble Energy

Project: Weld County, CO (NAD 83)
Site: Sec. 8-T6N-R62W (Wells Ranch 8 North PAD)
Well: Wells Ranch AE08-68-1HN



Azimuths to Grid North
True North: -0.74°
Magnetic North: 7.79°

Magnetic Field
Strength: 53015.9snT
Dip Angle: 67.14°
Date: 9/17/2012
Model: BGGM2012

LEGEND

- Wells Ranch AE08-68-1HN, Plan A, Plan A - Rev 0 Proposal V0
- MWD Surveys

Halliburton Energy Services, Inc. ("Halliburton") recently completed directional drilling and MWD operations at the Wells Ranch AE08-68-1HN well located at Weld County, CO. At the conclusion of the job Halliburton performed a final survey on the well. Noble Energy has requested that Halliburton provide them the distances from BHL to section lines from that final survey to allow Noble Energy to meet its requirements under Colorado law. These distances are generated by a mathematical algorithm based on rough data collected after the well is drilled. Halliburton considers it to be a rough estimate only and it is not to be relied upon in any application where accurate data is required. In consideration for Halliburton releasing this data to Noble Energy, Noble Energy agrees to release Halliburton from any consequences of it or anyone else relying on such data.

