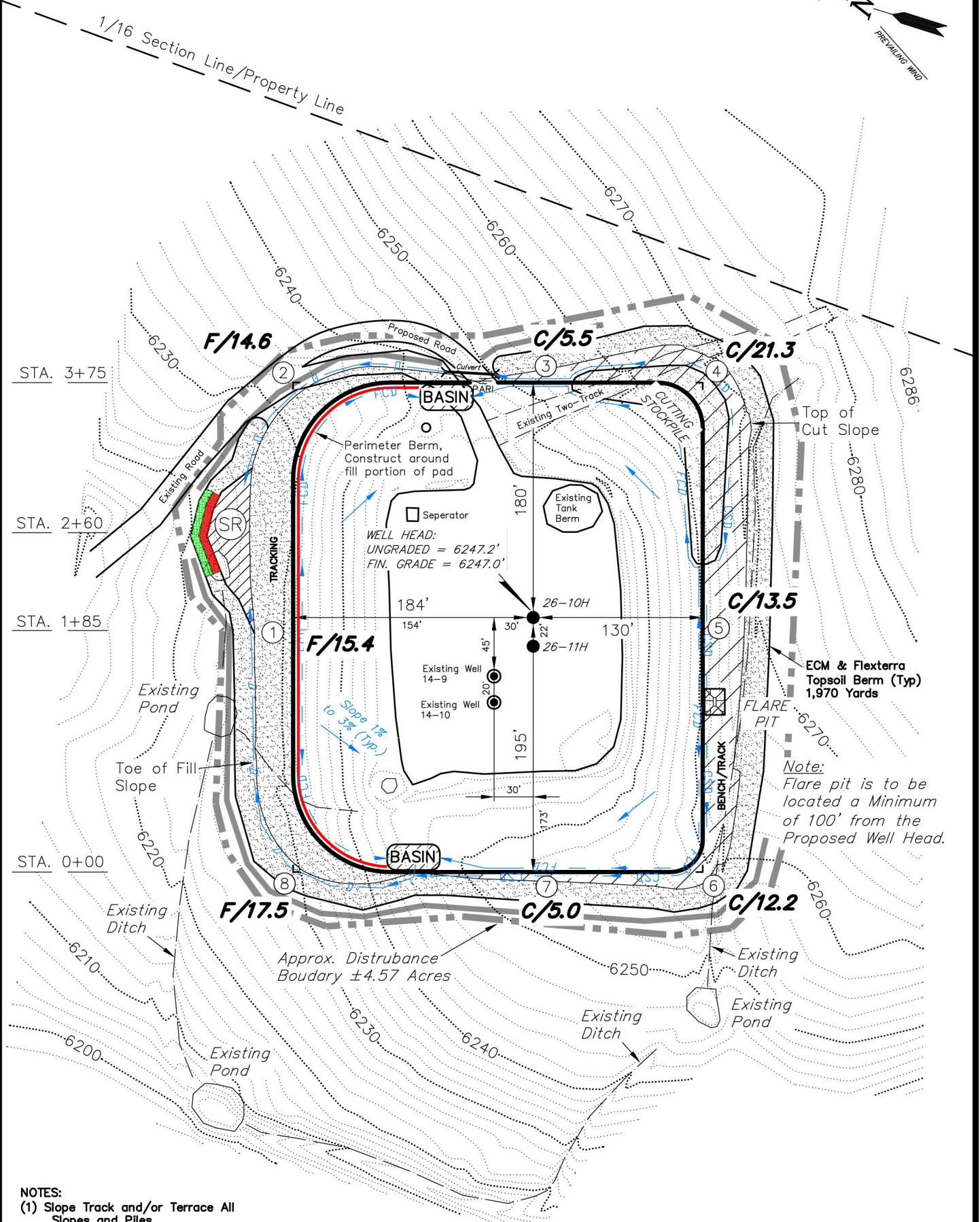
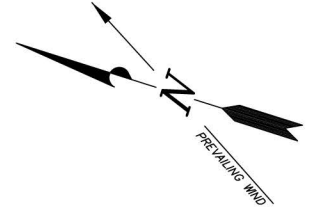


ENCANA OIL & GAS (USA) INC

CONSTRUCTION LAYOUT DRAWING CUT SHEET

WELL PAD (J140U) EXPANSION
Section 14, T8S, R96W, 6th P.M.



NOTES:

- (1) Slope Track and/or Terrace All Slopes and Piles
- (2) Erosion Control & Seed Topsoil Stockpile
- (3) Erosion Control & Seed Outside Slopes of Stockpiles
- (4) Slope away from Substructure Areas 1% to 3% to Flow Control Ditch on Entire Pad
- (5) When Possible the Cut and Fill Slopes Directly Behind the Proposed Production Equipment Should be Reclaimed with 3:1 Slopes and Topsoil Spread During Pad Construction.
- (6) BMP Selection and Position may Change Depending on Actual Conditions Encountered During the Construction Process.
- (7) All CMP's Shall have Inlet and Outlet Protection.
- (8) All BMP's to be constructed to EnCana Oil & Gas (USA) Inc. BMP Manual's Specifications.

LEGEND:

- PARI = PAD/ACCESS ROAD INTERFACE
SR = SEDIMENT RESERVOIR
— = PERIMETER CONTROL (WATTLES)
CDM = CHECK DAM
FCD = FLOW CONTROL DITCH
ECB = EROSION CONTROL BLANKET
D = FILL DIVERSION TO SEDIMENT TRAP
CSD = CUT SLOPE DIVERSION (BERM TOE OF CUT SLOPE)
VGB = VEGETATION BUFFER (UNDISTURBED LAND INSIDE PC)
— = SEED, ECB & FLEX
— = LEVEL SPREADER

SURVEYED BY:	C.D.S.	DATE SURVEYED:	10-03-11
DRAWN BY:	F.T.M.	DATE DRAWN:	10-06-11
SCALE:	1" = 100'	REVISED:	M.W. 02-22-13

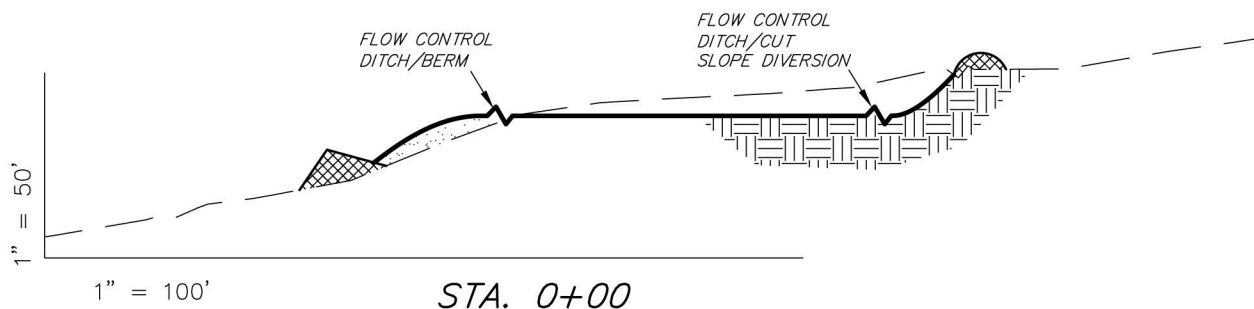
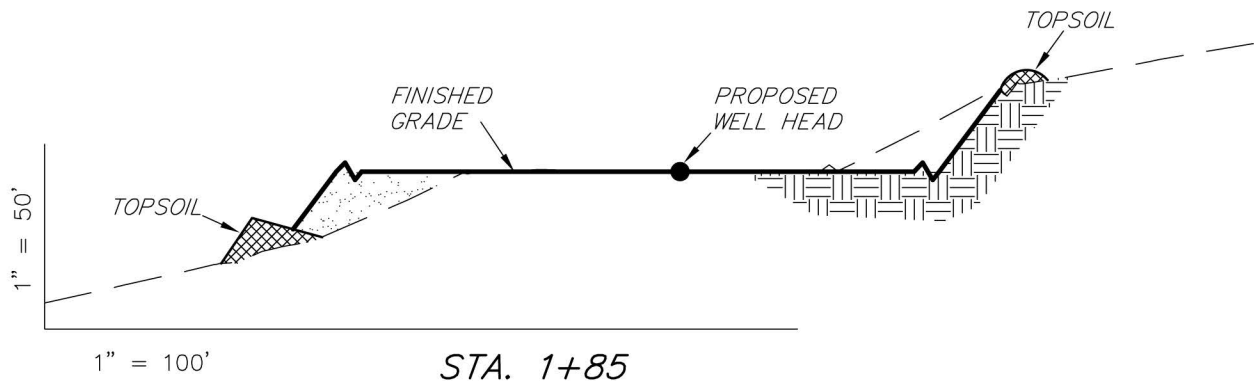
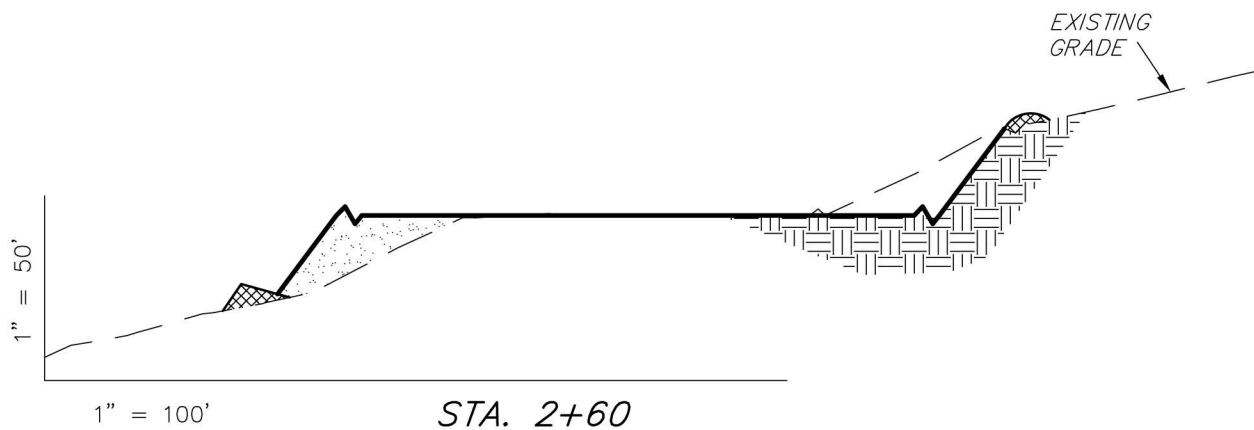
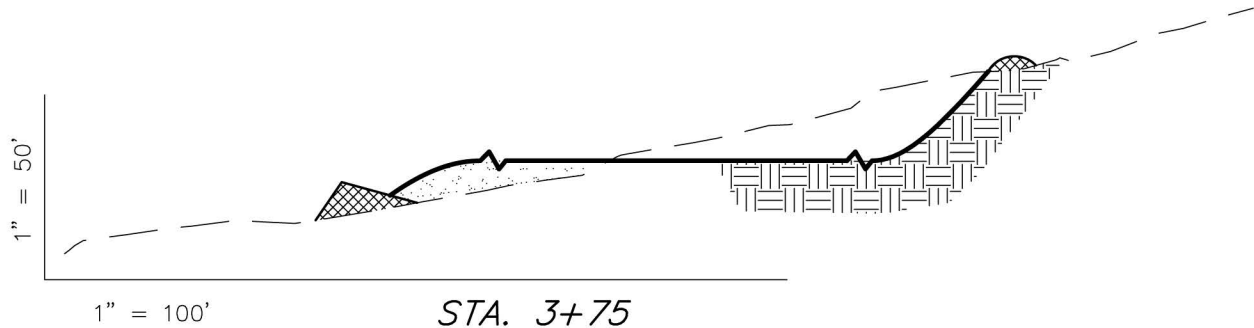
Tri State
Land Surveying, Inc.
180 NORTH VERNAL AVE. VERNAL, UTAH 84078
(435) 781-2501

SHEET
4
OF 11

ENCANA OIL & GAS (USA) INC

CONSTRUCTION LAYOUT DRAWING CROSS SECTIONS

WELL PAD (J140U) EXPANSION Section 14, T8S, R96W, 6th P.M.



NOTE:
UNLESS OTHERWISE NOTED
CUT SLOPES ARE AT 1.5:1
FILL SLOPES ARE AT 1.5:1

ESTIMATED EARTHWORK QUANTITIES (No Shrink or swell adjustments have been used) (Expressed in Cubic Yards)				
ITEM	CUT	FILL	6" TOPSOIL	EXCESS
PAD	11,780	11,750	Topsoil is not included in Pad Cut	30
PIT	N/A	N/A		N/A
TOTALS	11,780	11,750	1,940	30

SURVEYED BY: C.D.S.	DATE SURVEYED: 10-03-11
DRAWN BY: F.T.M.	DATE DRAWN: 10-06-11
SCALE: 1" = 100'	REVISED: M.W. 02-22-13

Tri State
Land Surveying, Inc.
180 NORTH VERNAL AVE. VERNAL, UTAH 84078
(435) 781-2501

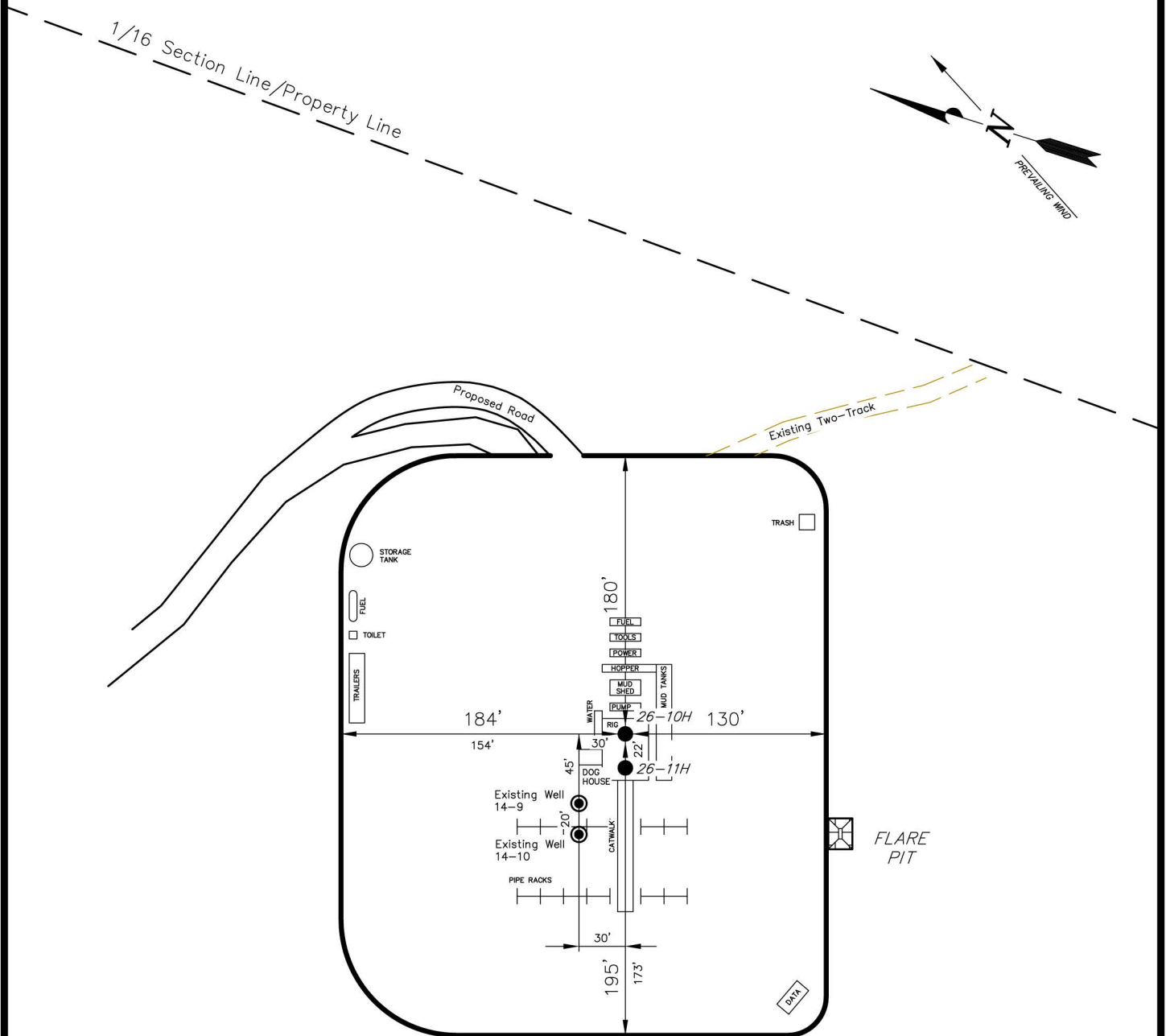
SHEET
5
OF 11

ENCANA OIL & GAS (USA) INC

TYPICAL RIG LAYOUT

WELL PAD (J140U) EXPANSION

Section 14, T8S, R96W, 6th P.M.



SURVEYED BY: C.D.S.	DATE SURVEYED: 10-03-11
DRAWN BY: F.T.M.	DATE DRAWN: 10-06-11
SCALE: 1" = 100'	REVISED: M.W. 02-22-13

Tri State
Land Surveying, Inc.
180 NORTH VERNAL AVE. VERNAL, UTAH 84078
(435) 781-2501

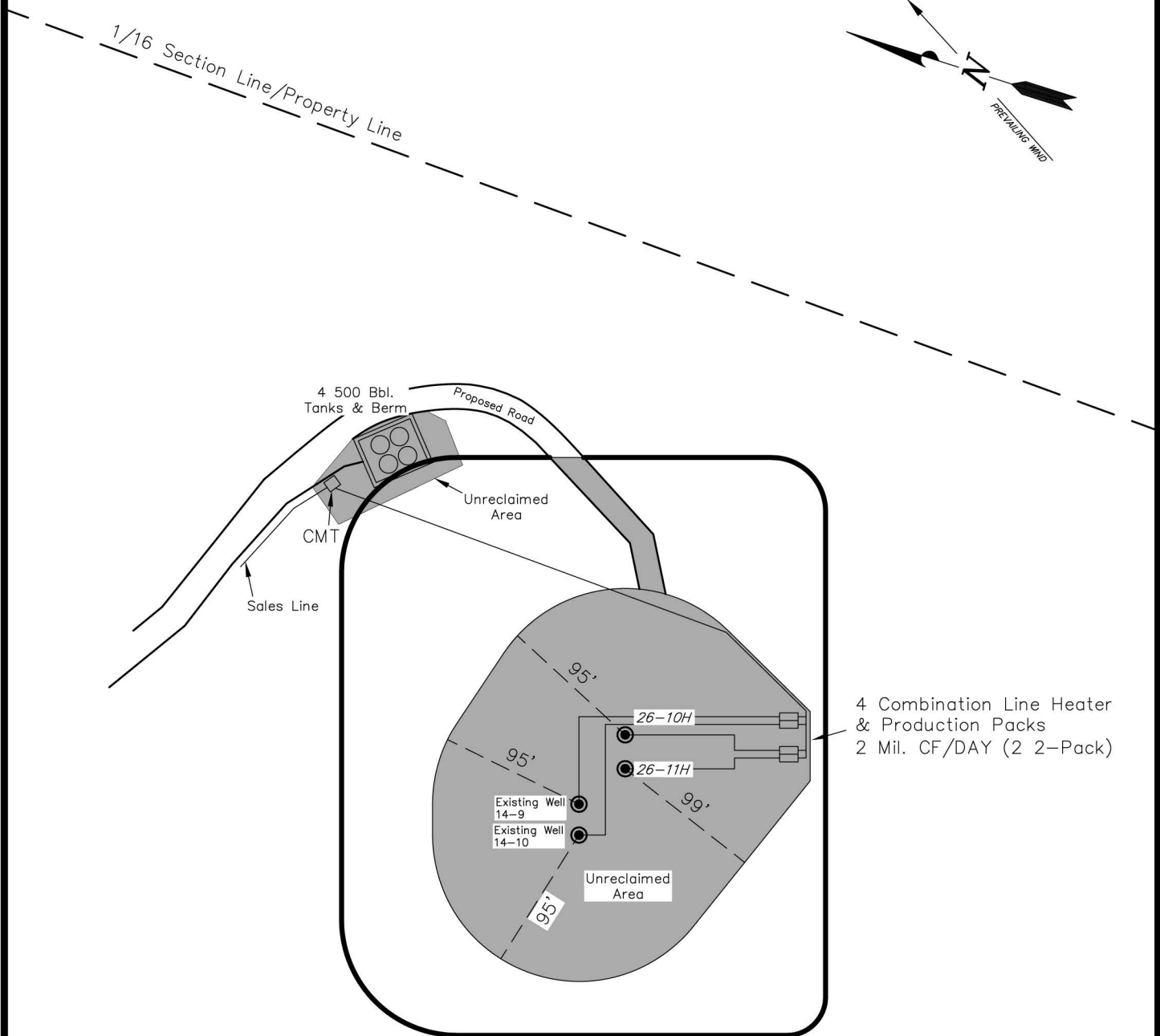
SHEET
6
OF 11

ENCANA OIL & GAS (USA) INC

PRODUCTION SCHEMATIC

WELL PAD (J140U) EXPANSION

Section 14, T8S, R96W, 6th P.M.



Notes:

1. Reclaimed area to include seeding of approved vegetation and sufficient storm water management system.
2. Reclaimed Pad to have storm water Management BMP's Per Encana Oil & Gas (USA) Inc. BMP Manual.
3. Actual Equipment Layout and Reclaimed Pad Surface Area May Change do to Production Requirements or Site Conditions.

DISTURBED AREA:

TOTAL DISTURBED AREA = 4.57 ACRES
TOTAL RECLAIMED AREA = 3.40 ACRES
UNRECLAIMED AREA = 1.17 ACRES

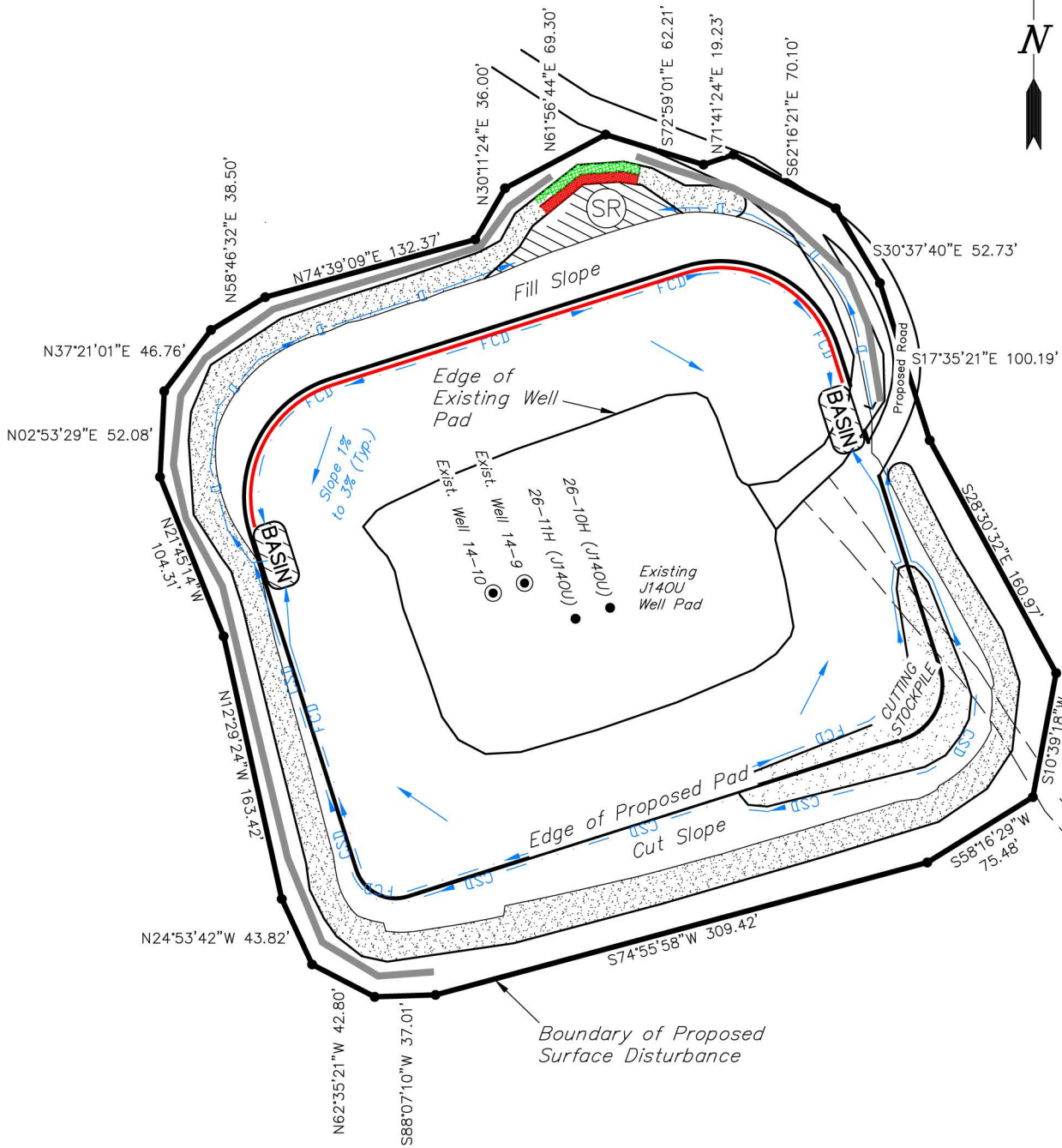
SURVEYED BY: C.D.S.	DATE SURVEYED: 10-03-11
DRAWN BY: F.T.M.	DATE DRAWN: 10-06-11
SCALE: 1" = 100'	REVISED: M.W. 02-22-13

Tri State
Land Surveying, Inc.
180 NORTH VERNAL AVE. VERNAL, UTAH 84078
(435) 781-2501

SHEET
7
OF 11

ENCANA OIL & GAS (USA) INC

SURFACE DISTURBANCE AREA WELL PAD (J140U) EXPANSION Section 14, T8S, R96W, 6th P.M.



1/16 Section Line/Property Line

Surface Disturbance Area

PROPOSED	EXISTING	TOTAL
3.58 Acres	0.99 Acres	4.57 Acres

SURVEYED BY: C.D.S. DATE SURVEYED: 10-13-11
 DRAWN BY: M.W. DATE DRAWN: 07-13-12
 SCALE: 1" = 100' REVISED: M.W. 02-22-13

Tri State
 Land Surveying, Inc.
 180 NORTH VERNAL AVE. VERNAL, UTAH 84078
 (435) 781-2501

SHEET
 8
 OF 11