

EnCana Oil & Gas Inc.

**Well Pad (J14OU) Expansion
SEC 14, T8S, R96W, 6th P.M.**



**Tri-State
Land Surveying Inc.**
(435) 781-2501
180 North Vernal Ave. Vernal, Utah 84078

SCALE: 1 = 100,000
DRAWN BY: JAS
DATE: 02-22-2013

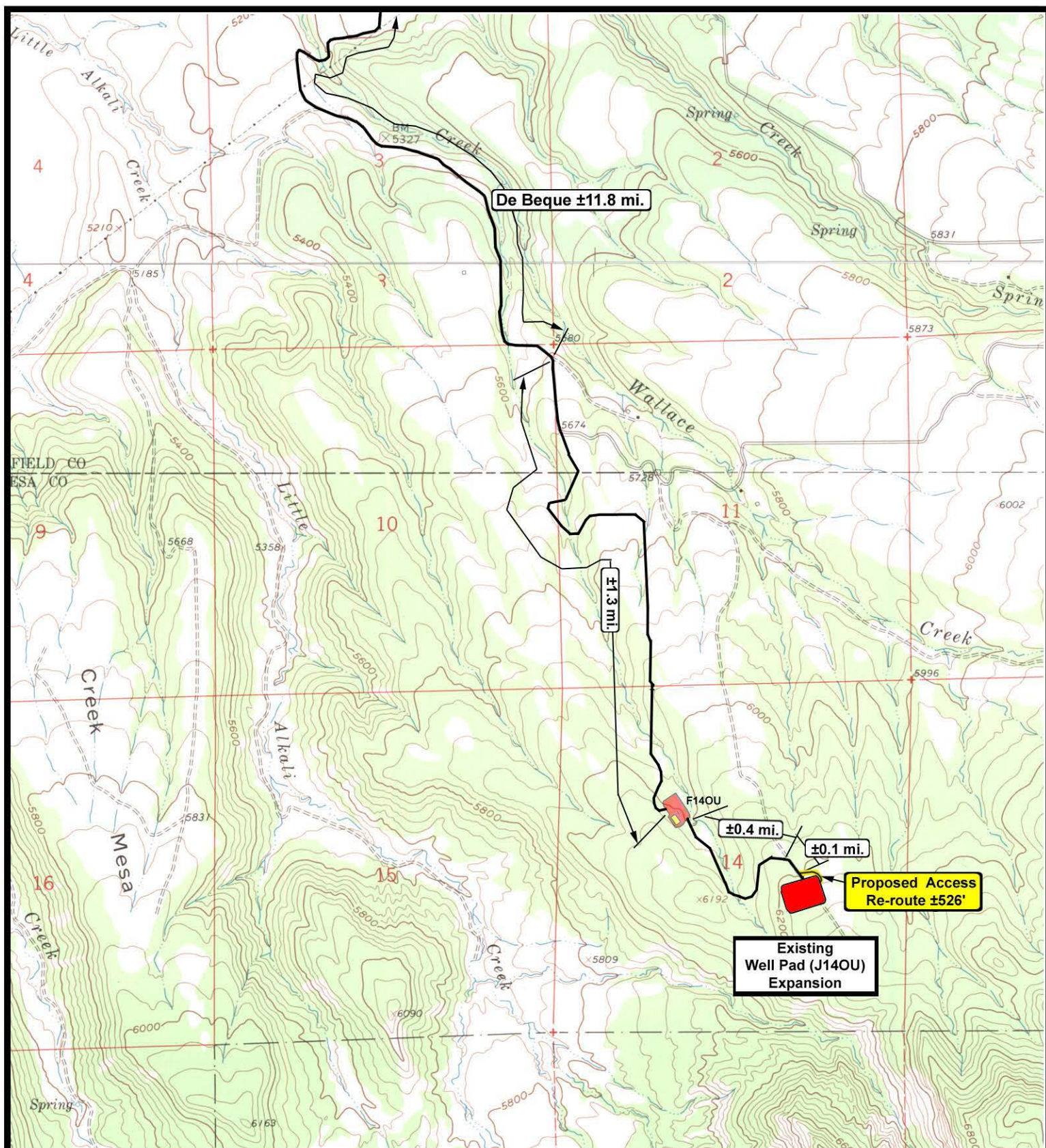
Legend

Existing Road
Proposed Access

TOPOGRAPHIC MAP

"A"

SHEET
9
OF 11



EnCana Oil & Gas Inc.

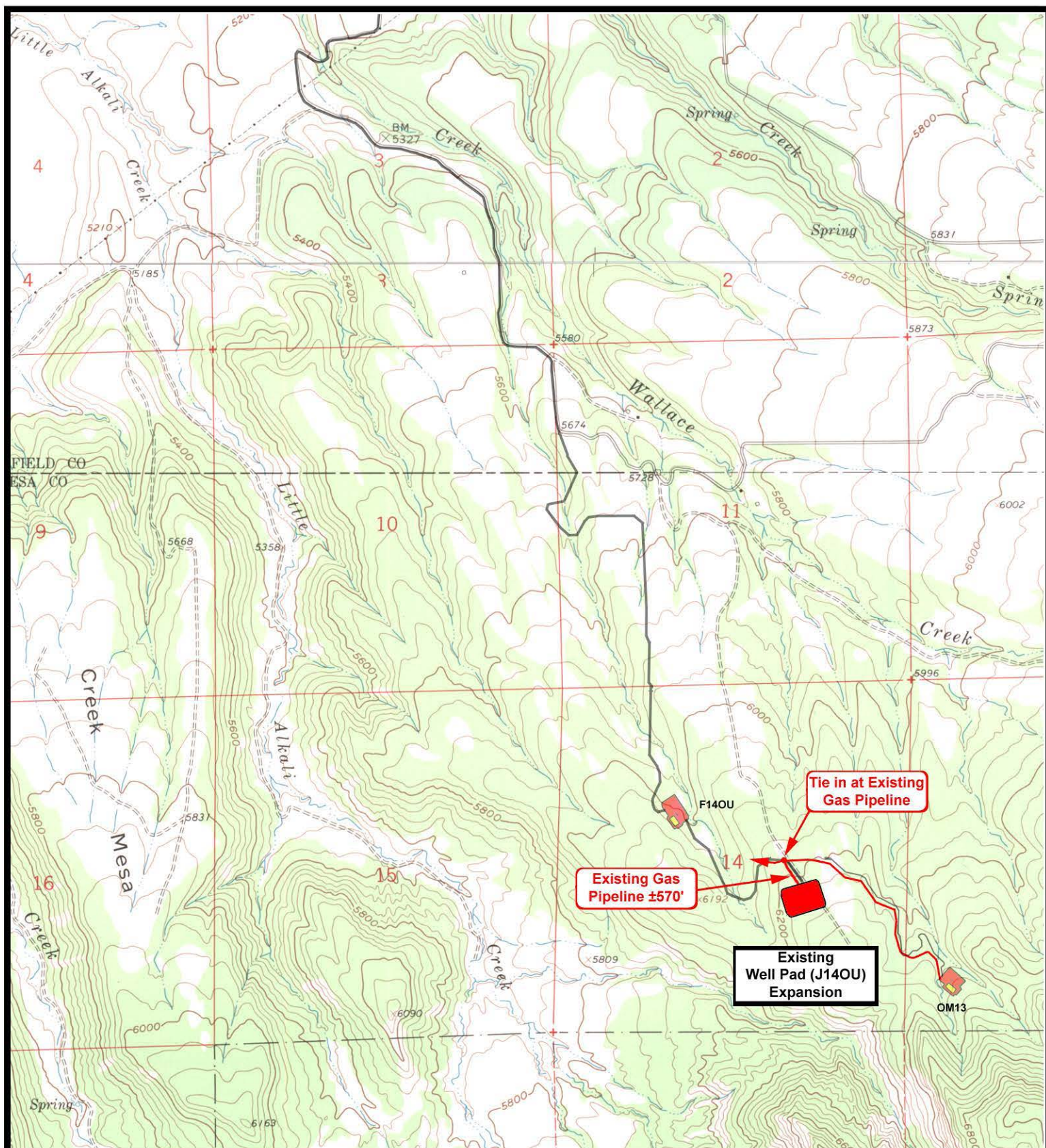
Well Pad (J14OU) Expansion
SEC 14, T8S, R96W, 6th P.M.



Tri-State
Land Surveying Inc.
 (435) 781-2501
 180 North Vernal Ave. Vernal, Utah 84078

SCALE: 1" = 2,000'
 DRAWN BY: JAS
 DATE: 02-22-2013

Legend	
	Existing Road
	Proposed Access
TOPOGRAPHIC MAP	
"B"	SHEET 10 OF 11



EnCana Oil & Gas Inc.

**Well Pad (J14OU) Expansion
SEC 14, T8S, R96W, 6th P.M.**



**Tri-State
Land Surveying Inc.**
(435) 781-2501
180 North Vernal Ave. Vernal, Utah 84078

SCALE: 1" = 2,000'
DRAWN BY: JAS
DATE: 02-22-2013

Legend
— Roads
— Existing Gas Line
- - - Proposed Gas Line

TOPOGRAPHIC MAP
"D"

SHEET
11
OF 11