

FORESTAR PETROLEUM CORPORATION

ACE DRAW STATE #44-36

LOCATED IN MOFFAT COUNTY, COLORADO

SECTION 36, T12N, R97W, 6th P.M.



PHOTO: VIEW OF EXISTING LOCATION

CAMERA ANGLE: NORTHERLY



PHOTO: VIEW FROM BEGINNING OF EXISTING ACCESS

CAMERA ANGLE: NORTHWESTERLY



- Since 1964 -

U **E** **L** **S** Uintah Engineering & Land Surveying
85 South 200 East Vernal, Utah 84078
(435) 789-1017 * FAX (435) 789-1813

LOCATION PHOTOS

04 29 13
MONTH DAY YEAR

PHOTO

P1

TAKEN BY: B.H.

DRAWN BY: A.T.

REVISED: 00-00-00

FORESTAR PETROLEUM CORPORATION

ACE DRAW STATE #44-36

LOCATED IN MOFFAT COUNTY, COLORADO

SECTION 36, T12N, R97W, 6th P.M.

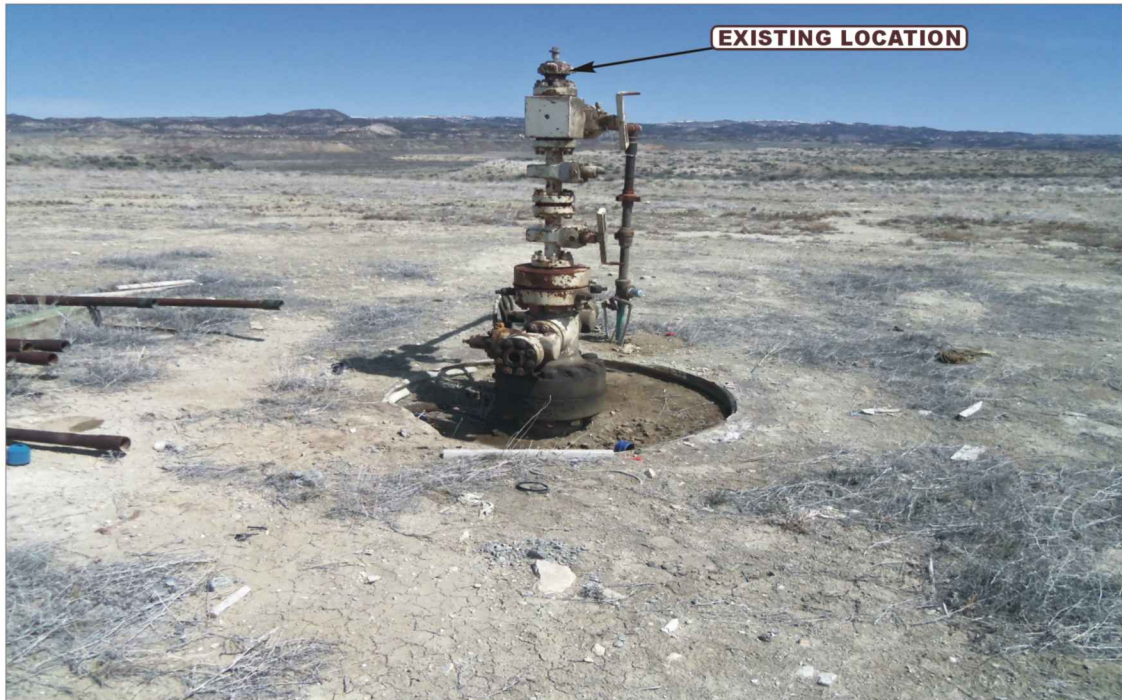


PHOTO: VIEW OF EXISTING LOCATION

CAMERA ANGLE: NORTHERLY

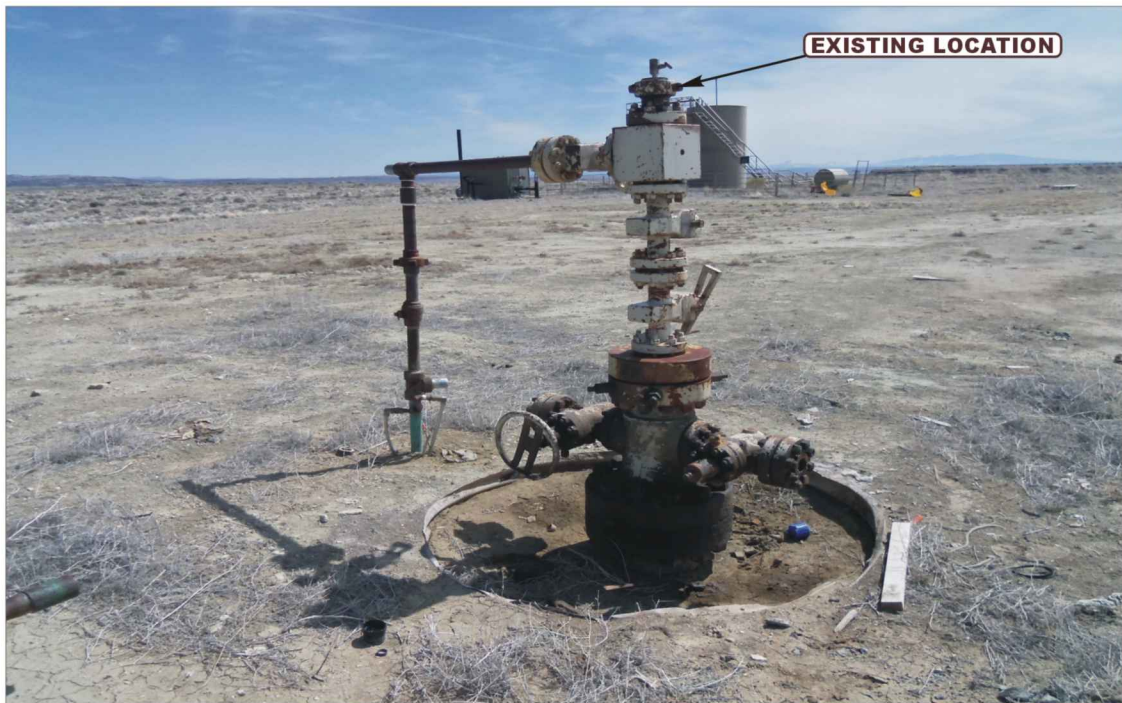


PHOTO: VIEW OF EXISTING LOCATION

CAMERA ANGLE: EASTERLY



- Since 1964 -

U
ELS Uintah Engineering & Land Surveying
85 South 200 East Vernal, Utah 84078
(435) 789-1017 * FAX (435) 789-1813

LOCATION PHOTOS

04 29 13
MONTH DAY YEAR

PHOTO

P2

TAKEN BY: B.H.

DRAWN BY: A.T.

REVISED: 00-00-00

FORESTAR PETROLEUM CORPORATION

ACE DRAW STATE #44-36

LOCATED IN MOFFAT COUNTY, COLORADO

SECTION 36, T12N, R97W, 6th P.M.

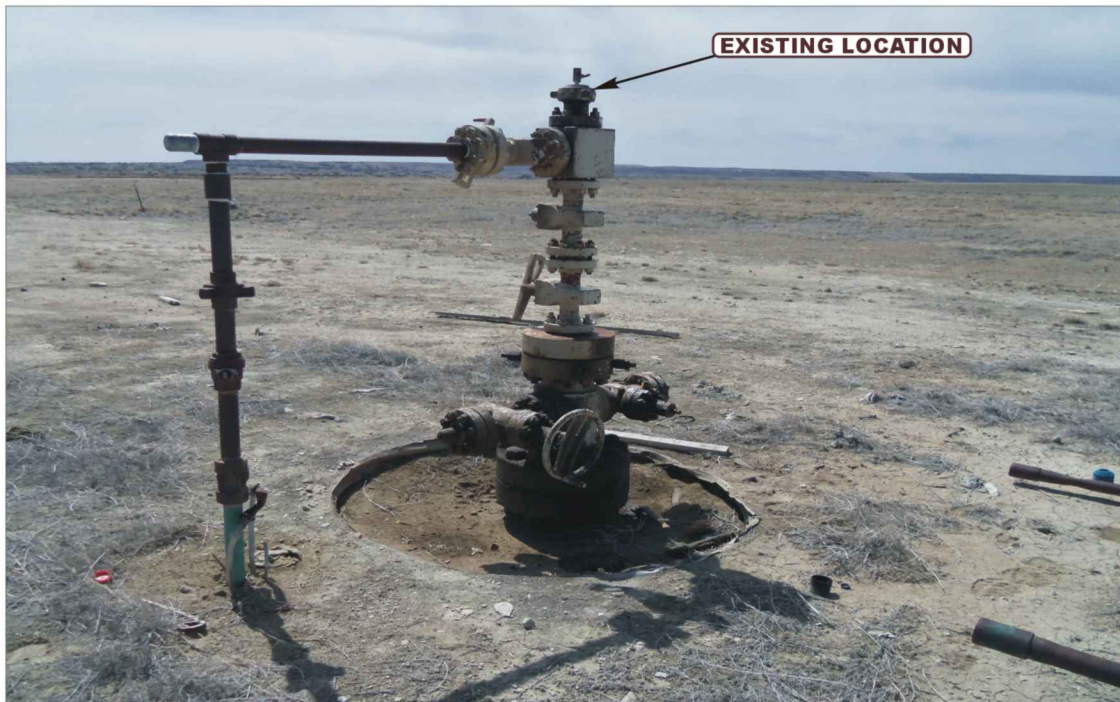


PHOTO: VIEW OF EXISTING LOCATION

CAMERA ANGLE: SOUTHERLY

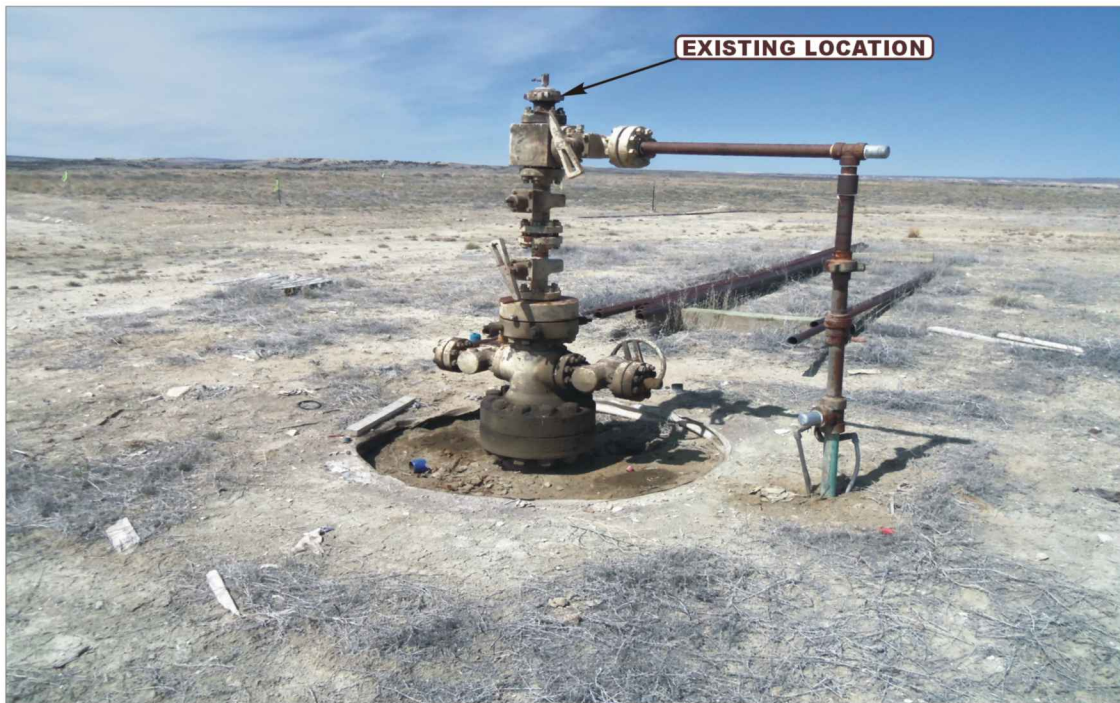


PHOTO: VIEW OF EXISTING LOCATION

CAMERA ANGLE: WESTERLY



- Since 1964 -

Uintah Engineering & Land Surveying
85 South 200 East Vernal, Utah 84078
(435) 789-1017 * FAX (435) 789-1813

LOCATION PHOTOS

04 29 13
MONTH DAY YEAR

PHOTO

P3

TAKEN BY: B.H.

DRAWN BY: A.T.

REVISED: 00-00-00