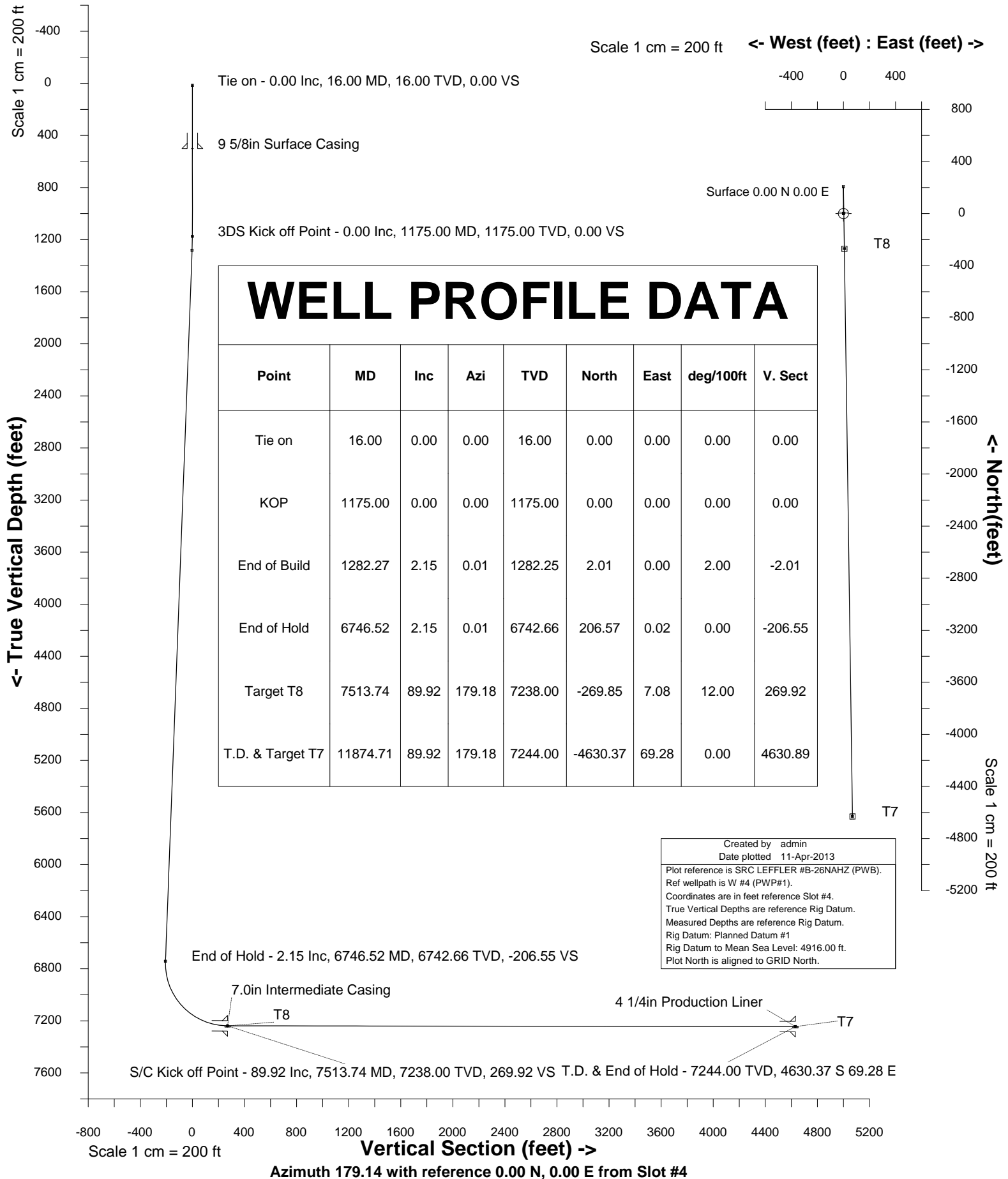


SYNERGY RESOURCES			
Location	Weld County, CO, USA(Imported)	Slot	Slot #4
Field	Wattenberg	Well	SRC LEFFLER #B-26NAHZ
Installation	SRC LEFFLER	Wellbore	SRC LEFFLER #B-26NAHZ (PWB)

Slot	Slot #4
1	1
2	2
3	3
4	4
5	5
6	6
7	7
8	8
9	9
10	10
11	11
12	12
13	13
14	14
15	15
16	16
17	17
18	18
19	19
20	20
21	21
22	22
23	23
24	24
25	25
26	26
27	27
28	28
29	29
30	30
31	31
32	32
33	33
34	34
35	35
36	36
37	37
38	38
39	39
40	40
41	41
42	42
43	43
44	44
45	45
46	46
47	47
48	48
49	49
50	50
51	51
52	52
53	53
54	54
55	55
56	56
57	57
58	58
59	59
60	60
61	61
62	62
63	63
64	64
65	65
66	66
67	67
68	68
69	69
70	70
71	71
72	72
73	73
74	74
75	75
76	76
77	77
78	78
79	79
80	80
81	81
82	82
83	83
84	84
85	85
86	86
87	87
88	88
89	89
90	90
91	91
92	92
93	93
94	94
95	95
96	96
97	97
98	98
99	99
100	100

Well SRC LEFFLER #B-26NAHZ

**Wellbore** SRC LEFFLER #B-26NAHZ (PWB)





SYSDRILL  
Well Design Combined Report  
Wellbore: SRC LEFFLER #B-26NAHZ (PWB)  
Wellpath: W #4 (PWP#1)

Wellhead Details

Name	Northing	Easting	Latitude	Longitude	North	East
Slot #4	1445135.1930	3208208.6280	N40 33 10.3723	W104 45 2.5988	1.60N	67.47E

Site Details

Name	Northing	Easting	Coord System Name	North Alignment
SRC LEFFLER	1445133.5911	3208141.1650	CO83-NF on NORTH AMERICAN DATUM 1983 datum	Grid

Summary Wellpath

MD[ft]	Inc[deg]	Azi[deg]	TVD[ft]	North[ft]	East[ft]	Dogleg [deg/100ft]	Vertical Section[ft]	Northing	Easting
16.00	0.00	0.000	16.00	0.00N	0.00E		0.00	1445135.19	3208208.63
1175.00	0.00	0.000	1175.00	0.00N	0.00E	==>	0.00	1445135.19	3208208.63
1282.27	2.15	0.010	1282.25	2.01N	0.00E	2.00	-2.01	1445137.20	3208208.63
6746.52	2.15	0.010	6742.66	206.57N	0.02E	==>	-206.55	1445341.76	3208208.65
7513.74	89.92	179.180	7238.00	269.85S	7.08E	12.00	269.92	1444865.36	3208215.71
11874.71	89.92	179.180	7244.00	4630.37S	69.28E	==>	4630.89	1440504.97	3208277.90

Interpolated Wellpath

MD[ft]	Inc[deg]	Azi[deg]	TVD[ft]	North[ft]	East[ft]	Dogleg [deg/100ft]	Vertical Section[ft]	Northing	Easting
0.00	0.00	0.000	0.00	0.00N	0.00E		0.00	1445135.19	3208208.63
16.00	0.00	0.000	16.00	0.00N	0.00E	==>	0.00	1445135.19	3208208.63
100.00	0.00	0.000	100.00	0.00N	0.00E	==>	0.00	1445135.19	3208208.63
200.00	0.00	0.000	200.00	0.00N	0.00E	==>	0.00	1445135.19	3208208.63
300.00	0.00	0.000	300.00	0.00N	0.00E	==>	0.00	1445135.19	3208208.63
400.00	0.00	0.000	400.00	0.00N	0.00E	==>	0.00	1445135.19	3208208.63
500.00	0.00	0.000	500.00	0.00N	0.00E	==>	0.00	1445135.19	3208208.63
600.00	0.00	0.000	600.00	0.00N	0.00E	==>	0.00	1445135.19	3208208.63
700.00	0.00	0.000	700.00	0.00N	0.00E	==>	0.00	1445135.19	3208208.63
800.00	0.00	0.000	800.00	0.00N	0.00E	==>	0.00	1445135.19	3208208.63
900.00	0.00	0.000	900.00	0.00N	0.00E	==>	0.00	1445135.19	3208208.63
1000.00	0.00	0.000	1000.00	0.00N	0.00E	==>	0.00	1445135.19	3208208.63
1100.00	0.00	0.000	1100.00	0.00N	0.00E	==>	0.00	1445135.19	3208208.63
1159.00	0.00	0.000	1159.00	0.00N	0.00E	==>	0.00	1445135.19	3208208.63
1175.00	0.00	0.000	1175.00	0.00N	0.00E	==>	0.00	1445135.19	3208208.63
1259.00	1.68	0.010	1258.99	1.23N	0.00E	2.00	-1.23	1445136.42	3208208.63
1282.27	2.15	0.010	1282.25	2.01N	0.00E	2.00	-2.01	1445137.20	3208208.63
1300.00	2.15	0.010	1299.96	2.67N	0.00E	==>	-2.67	1445137.86	3208208.63
1400.00	2.15	0.010	1399.89	6.42N	0.00E	==>	-6.41	1445141.61	3208208.63
1500.00	2.15	0.010	1499.82	10.16N	0.00E	==>	-10.16	1445145.35	3208208.63
1600.00	2.15	0.010	1599.75	13.90N	0.00E	==>	-13.90	1445149.10	3208208.63
1700.00	2.15	0.010	1699.68	17.65N	0.00E	==>	-17.64	1445152.84	3208208.63
1800.00	2.15	0.010	1799.61	21.39N	0.00E	==>	-21.39	1445156.58	3208208.63
1900.00	2.15	0.010	1899.54	25.13N	0.00E	==>	-25.13	1445160.33	3208208.63
2000.00	2.15	0.010	1999.47	28.88N	0.00E	==>	-28.87	1445164.07	3208208.63
2100.00	2.15	0.010	2099.40	32.62N	0.00E	==>	-32.62	1445167.81	3208208.63
2200.00	2.15	0.010	2199.33	36.37N	0.00E	==>	-36.36	1445171.56	3208208.63
2300.00	2.15	0.010	2299.26	40.11N	0.00E	==>	-40.10	1445175.30	3208208.63
2400.00	2.15	0.010	2399.19	43.85N	0.00E	==>	-43.85	1445179.04	3208208.63
2500.00	2.15	0.010	2499.12	47.60N	0.01E	==>	-47.59	1445182.79	3208208.63
2600.00	2.15	0.010	2599.05	51.34N	0.01E	==>	-51.33	1445186.53	3208208.63
2700.00	2.15	0.010	2698.98	55.08N	0.01E	==>	-55.08	1445190.28	3208208.63
2800.00	2.15	0.010	2798.91	58.83N	0.01E	==>	-58.82	1445194.02	3208208.63
2900.00	2.15	0.010	2898.84	62.57N	0.01E	==>	-62.56	1445197.76	3208208.63
3000.00	2.15	0.010	2998.77	66.32N	0.01E	==>	-66.31	1445201.51	3208208.64
3100.00	2.15	0.010	3098.70	70.06N	0.01E	==>	-70.05	1445205.25	3208208.64
3200.00	2.15	0.010	3198.63	73.80N	0.01E	==>	-73.79	1445208.99	3208208.64
3300.00	2.15	0.010	3298.56	77.55N	0.01E	==>	-77.54	1445212.74	3208208.64
3400.00	2.15	0.010	3398.49	81.29N	0.01E	==>	-81.28	1445216.48	3208208.64
3500.00	2.15	0.010	3498.42	85.03N	0.01E	==>	-85.02	1445220.22	3208208.64
3600.00	2.15	0.010	3598.35	88.78N	0.01E	==>	-88.77	1445223.97	3208208.64
3700.00	2.15	0.010	3698.28	92.52N	0.01E	==>	-92.51	1445227.71	3208208.64
3800.00	2.15	0.010	3798.21	96.27N	0.01E	==>	-96.25	1445231.46	3208208.64
3900.00	2.15	0.010	3898.14	100.01N	0.01E	==>	-100.00	1445235.20	3208208.64
4000.00	2.15	0.010	3998.07	103.75N	0.01E	==>	-103.74	1445238.94	3208208.64
4100.00	2.15	0.010	4098.00	107.50N	0.01E	==>	-107.48	1445242.69	3208208.64
4200.00	2.15	0.010	4197.93	111.24N	0.01E	==>	-111.23	1445246.43	3208208.64
4300.00	2.15	0.010	4297.86	114.98N	0.01E	==>	-114.97	1445250.17	3208208.64
4400.00	2.15	0.010	4397.79	118.73N	0.01E	==>	-118.71	1445253.92	3208208.64
4500.00	2.15	0.010	4497.72	122.47N	0.01E	==>	-122.46	1445257.66	3208208.64
4600.00	2.15	0.010	4597.65	126.21N	0.01E	==>	-126.20	1445261.40	3208208.64
4700.00	2.15	0.010	4697.58	129.96N	0.01E	==>	-129.94	1445265.15	3208208.64
4800.00	2.15	0.010	4797.51	133.70N	0.01E	==>	-133.69	1445268.89	3208208.64

All data is in Feet unless otherwise stated  
Coordinates are from Slot MD's are from Rig and TVD's are from Rig ( Planned Datum #1 4916.0ft above Mean Sea Level )  
Vertical Section is from 0.00N 0.00E on azimuth 179.140 degrees  
Bottom hole distance is 4630.89 Feet on azimuth 179.14 degrees from Wellhead  
Calculation method uses Minimum Curvature method  
Prepared by Peterson Energy  
Date Printed: 11-Apr-2013



SYSDRILL  
Well Design Combined Report  
Wellbore: SRC LEFFLER #B-26NAHZ (PWB)  
Wellpath: W #4 (PWP#1)

Interpolated Wellpath

MD[ft]	Inc[deg]	Azi[deg]	TVD[ft]	North[ft]	East[ft]	Dogleg [deg/100ft]	Vertical Section[ft]	Northing	Easting
4900.00	2.15	0.010	4897.44	137.45N	0.02E	==>	-137.43	1445272.63	3208208.64
5000.00	2.15	0.010	4997.37	141.19N	0.02E	==>	-141.17	1445276.38	3208208.64
5100.00	2.15	0.010	5097.30	144.93N	0.02E	==>	-144.92	1445280.12	3208208.64
5200.00	2.15	0.010	5197.23	148.68N	0.02E	==>	-148.66	1445283.87	3208208.64
5300.00	2.15	0.010	5297.16	152.42N	0.02E	==>	-152.40	1445287.61	3208208.64
5400.00	2.15	0.010	5397.09	156.16N	0.02E	==>	-156.15	1445291.35	3208208.65
5500.00	2.15	0.010	5497.02	159.91N	0.02E	==>	-159.89	1445295.10	3208208.65
5600.00	2.15	0.010	5596.95	163.65N	0.02E	==>	-163.63	1445298.84	3208208.65
5700.00	2.15	0.010	5696.88	167.40N	0.02E	==>	-167.38	1445302.58	3208208.65
5800.00	2.15	0.010	5796.81	171.14N	0.02E	==>	-171.12	1445306.33	3208208.65
5900.00	2.15	0.010	5896.74	174.88N	0.02E	==>	-174.86	1445310.07	3208208.65
6000.00	2.15	0.010	5996.67	178.63N	0.02E	==>	-178.61	1445313.81	3208208.65
6100.00	2.15	0.010	6096.60	182.37N	0.02E	==>	-182.35	1445317.56	3208208.65
6200.00	2.15	0.010	6196.53	186.11N	0.02E	==>	-186.09	1445321.30	3208208.65
6300.00	2.15	0.010	6296.46	189.86N	0.02E	==>	-189.84	1445325.05	3208208.65
6400.00	2.15	0.010	6396.39	193.60N	0.02E	==>	-193.58	1445328.79	3208208.65
6500.00	2.15	0.010	6496.32	197.35N	0.02E	==>	-197.32	1445332.53	3208208.65
6600.00	2.15	0.010	6596.25	201.09N	0.02E	==>	-201.07	1445336.28	3208208.65
6700.00	2.15	0.010	6696.18	204.83N	0.02E	==>	-204.81	1445340.02	3208208.65
6746.52	2.15	0.010	6742.66	206.57N	0.02E	==>	-206.55	1445341.76	3208208.65
6800.00	4.27	178.770	6796.11	205.58N	0.07E	12.00	-205.56	1445340.77	3208208.69
6900.00	16.27	179.080	6894.32	187.78N	0.37E	12.00	-187.76	1445322.97	3208209.00
7000.00	28.27	179.130	6986.69	149.96N	0.96E	12.00	-149.93	1445285.15	3208209.59
7100.00	40.27	179.150	7069.18	93.75N	1.81E	12.00	-93.72	1445228.94	3208210.44
7200.00	52.27	179.160	7138.18	21.63N	2.87E	12.00	-21.58	1445156.82	3208211.50
7300.00	64.27	179.170	7190.67	63.26S	4.11E	12.00	63.32	1445071.93	3208212.74
7400.00	76.27	179.180	7224.36	157.21S	5.47E	12.00	157.27	1444977.99	3208214.10
7500.00	88.27	179.180	7237.78	256.11S	6.89E	12.00	256.19	1444879.09	3208215.52
7513.74	89.92	179.180	7238.00	269.85S	7.08E	12.00	269.92	1444865.36	3208215.71
7600.00	89.92	179.180	7238.12	356.10S	8.31E	==>	356.18	1444779.11	3208216.94
7700.00	89.92	179.180	7238.26	456.09S	9.74E	==>	456.18	1444679.12	3208218.37
7800.00	89.92	179.180	7238.39	556.08S	11.17E	==>	556.18	1444579.13	3208219.79
7900.00	89.92	179.180	7238.53	656.07S	12.59E	==>	656.18	1444479.15	3208221.22
8000.00	89.92	179.180	7238.67	756.06S	14.02E	==>	756.18	1444379.16	3208222.65
8100.00	89.92	179.180	7238.81	856.05S	15.44E	==>	856.18	1444279.17	3208224.07
8200.00	89.92	179.180	7238.94	956.04S	16.87E	==>	956.18	1444179.19	3208225.50
8300.00	89.92	179.180	7239.08	1056.03S	18.30E	==>	1056.18	1444079.20	3208226.92
8400.00	89.92	179.180	7239.22	1156.02S	19.72E	==>	1156.18	1443979.21	3208228.35
8500.00	89.92	179.180	7239.36	1256.01S	21.15E	==>	1256.18	1443879.23	3208229.78
8600.00	89.92	179.180	7239.49	1356.00S	22.58E	==>	1356.18	1443779.24	3208231.20
8700.00	89.92	179.180	7239.63	1455.99S	24.00E	==>	1456.18	1443679.25	3208232.63
8800.00	89.92	179.180	7239.77	1555.98S	25.43E	==>	1556.18	1443579.27	3208234.05
8900.00	89.92	179.180	7239.91	1655.97S	26.85E	==>	1656.18	1443479.28	3208235.48
9000.00	89.92	179.180	7240.04	1755.96S	28.28E	==>	1756.18	1443379.29	3208236.91
9100.00	89.92	179.180	7240.18	1855.94S	29.71E	==>	1856.18	1443279.31	3208238.33
9200.00	89.92	179.180	7240.32	1955.93S	31.13E	==>	1956.18	1443179.32	3208239.76
9300.00	89.92	179.180	7240.46	2055.92S	32.56E	==>	2056.18	1443079.33	3208241.19
9400.00	89.92	179.180	7240.60	2155.91S	33.98E	==>	2156.18	1442979.35	3208242.61
9500.00	89.92	179.180	7240.73	2255.90S	35.41E	==>	2256.18	1442879.36	3208244.04
9600.00	89.92	179.180	7240.87	2355.89S	36.84E	==>	2356.18	1442779.37	3208245.46
9700.00	89.92	179.180	7241.01	2455.88S	38.26E	==>	2456.18	1442679.39	3208246.89
9800.00	89.92	179.180	7241.15	2555.87S	39.69E	==>	2556.18	1442579.40	3208248.32
9900.00	89.92	179.180	7241.28	2655.86S	41.11E	==>	2656.18	1442479.41	3208249.74
10000.00	89.92	179.180	7241.42	2755.85S	42.54E	==>	2756.18	1442379.43	3208251.17
10100.00	89.92	179.180	7241.56	2855.84S	43.97E	==>	2856.18	1442279.44	3208252.59
10200.00	89.92	179.180	7241.70	2955.83S	45.39E	==>	2956.18	1442179.45	3208254.02
10300.00	89.92	179.180	7241.83	3055.82S	46.82E	==>	3056.18	1442079.47	3208255.45
10400.00	89.92	179.180	7241.97	3155.81S	48.25E	==>	3156.18	1441979.48	3208256.87
10500.00	89.92	179.180	7242.11	3255.80S	49.67E	==>	3256.18	1441879.49	3208258.30
10600.00	89.92	179.180	7242.25	3355.79S	51.10E	==>	3356.18	1441779.51	3208259.72
10700.00	89.92	179.180	7242.38	3455.78S	52.52E	==>	3456.18	1441679.52	3208261.15
10800.00	89.92	179.180	7242.52	3555.77S	53.95E	==>	3556.18	1441579.53	3208262.58
10900.00	89.92	179.180	7242.66	3655.76S	55.38E	==>	3656.18	1441479.55	3208264.00
11000.00	89.92	179.180	7242.80	3755.75S	56.80E	==>	3756.18	1441379.56	3208265.43
11100.00	89.92	179.180	7242.93	3855.74S	58.23E	==>	3856.18	1441279.57	3208266.85
11200.00	89.92	179.180	7243.07	3955.73S	59.65E	==>	3956.18	1441179.59	3208268.28
11300.00	89.92	179.180	7243.21	4055.72S	61.08E	==>	4056.18	1441079.60	3208269.71
11400.00	89.92	179.180	7243.35	4155.71S	62.51E	==>	4156.18	1440979.61	3208271.13
11500.00	89.92	179.180	7243.48	4255.70S	63.93E	==>	4256.18	1440879.63	3208272.56
11600.00	89.92	179.180	7243.62	4355.69S	65.36E	==>	4356.18	1440779.64	3208273.98
11700.00	89.92	179.180	7243.76	4455.68S	66.78E	==>	4456.18	1440679.65	3208275.41
11800.00	89.92	179.180	7243.90	4555.67S	68.21E	==>	4556.18	1440579.67	3208276.84
11874.71	89.92	179.180	7244.00	4630.37S	69.28E	==>	4630.89	1440504.97	3208277.90

All data is in Feet unless otherwise stated  
Coordinates are from Slot MD's are from Rig and TVD's are from Rig ( Planned Datum #1 4916.0ft above Mean Sea Level )  
Vertical Section is from 0.00N 0.00E on azimuth 179.140 degrees  
Bottom hole distance is 4630.89 Feet on azimuth 179.14 degrees from Wellhead  
Calculation method uses Minimum Curvature method  
Prepared by Peterson Energy  
Date Printed: 11-Apr-2013



SYSDRILL  
Well Design Combined Report  
Wellbore: SRC LEFFLER #B-26NAHZ (PWB)  
Wellpath: W #4 (PWP#1)

Hole Sections

Diameter [in]	Start MD[ft]	Start TVD[ft]	Start North[ft]	Start East[ft]	End MD[ft]	End TVD[ft]	End North[ft]	End East[ft]	Wellbore
12 1/4	16.00	16.00	0.00N	0.00E	500.00	500.00	0.00N	0.00E	SRC LEFFLER #B-26NAHZ (PWB)
9 5/8	500.00	500.00	0.00N	0.00E	7514.00	7238.00	270.11S	7.09E	SRC LEFFLER #B-26NAHZ (PWB)
6 1/8	7514.00	7238.00	270.11S	7.09E	11874.71	7244.00	4630.37S	69.28E	SRC LEFFLER #B-26NAHZ (PWB)

Casings

Name	Top MD[ft]	Top TVD[ft]	Top North[ft]	Top East[ft]	Shoe MD[ft]	Shoe TVD[ft]	Shoe North[ft]	Shoe East[ft]	Wellbore
9 5/8in Surface Casing	16.00	16.00	0.00N	0.00E	500.00	500.00	0.00N	0.00E	SRC LEFFLER #B-26NAHZ (PWB)
7.0in Intermediate Casing	16.00	16.00	0.00N	0.00E	7514.00	7238.00	270.11S	7.09E	SRC LEFFLER #B-26NAHZ (PWB)
4 1/4in Production Liner	6745.00	6741.15	206.52N	0.02E	11874.71	7244.00	4630.37S	69.28E	SRC LEFFLER #B-26NAHZ (PWB)

Targets

Name	North[ft]	East[ft]	TVD[ft]	Latitude	Longitude	Northing	Easting	Last Revised
T7	4630.37S	69.28E	7244.00	N40 32 24.6137	W104 45 2.2083	1440504.97	3208277.90	8-Apr-2013
T8	269.85S	7.08E	7238.00	N40 33 7.7054	W104 45 2.5366	1444865.36	3208215.71	8-Apr-2013

Survey Tool Program

Reference	Survey Name	MD[ft]	TVD[ft]	Survey Tool	Error Model
17357	Planned	11874.71	7244.00	WdW Rate Gyro	Standard

Notes

All data is in Feet unless otherwise stated  
Coordinates are from Slot MD's are from Rig and TVD's are from Rig ( Planned Datum #1 4916.0ft above Mean Sea Level )  
Vertical Section is from 0.00N 0.00E on azimuth 179.140 degrees  
Bottom hole distance is 4630.89 Feet on azimuth 179.14 degrees from Wellhead  
Calculation method uses Minimum Curvature method  
Prepared by Peterson Energy  
Date Printed: 11-Apr-2013



SYSDRILL  
Closest Approach + Clearance Factor Summary Report  
Wellbore: SRC LEFFLER #B-26NAHZ (PWB)  
Wellpath: W #4 (PWP#1)

Ellipse separations are reported ONLY if BOTH wells have uncertainty data  
Only Depth and Magnetic Reference Field error terms are correlated across tie points  
Cutoff is calculated on CENTRE to CENTRE distance

Summary data uses Closest Approach clearance calculation for all minima  
Hole size/Casings ARE included  
Hole size/Casings are NOT subtracted from Centre-Centre distance  
Confidence limit of 95.00% / 2.80 SD.

### Wellbore

Name	Created	Last Revised
SRC LEFFLER #B-26NAHZ (PWB)	1-Apr-2013	10-Apr-2013

### Well

Name	Government ID	Last Revised
SRC LEFFLER #B-26NAHZ		1-Apr-2013

### Slot

Name	Grid Northing	Grid Easting	Latitude	Longitude	North	East
Slot #4	1445135.1930	3208208.6280	N40 33 10.3723	W104 45 2.5988	1.60N	67.47E

### Installation

Name	Easting	Northing	Coord System Name	North Alignment
SRC LEFFLER	3208141.1650	1445133.5911	CO83-NF on NAD83 datum	Grid

### Field

Name	Easting	Northing	Coord System Name	North Alignment
Wattenberg	41136929.7567	12284170.6461	CO83-NF on NAD83 datum	Grid

### Clearance Summary

Offset WellName	Offset Wellbore	Offset Slot	Offset Structure	Separation [ft]	MD[ft]	Diverging From[ft]	Ellipse Separation [ft]	Ellipse MD[ft]	Clearance Factor	Clearance MD[ft]
SRC LEFFLER #B-26CHZ	SRC LEFFLER #B-26CHZ (PWB)	Slot #5	SRC LEFFLER	22.50	1175.00	11859.83	19.94	1175.00	6.48	11874.71
SRC LEFFLER #14-26NHZ	SRC LEFFLER #14-26NHZ (PWB)	Slot #3	SRC LEFFLER	22.50	1033.06	1033.06	20.16	1033.06	5.08	11874.71
SRC LEFFLER #H-26CHZ	SRC LEFFLER #H-26CHZ (PWB)	Slot #2	SRC LEFFLER	44.99	967.44	11874.71	42.76	967.44	9.20	11874.71
SRC LEFFLER #B-26NBH Z	SRC LEFFLER #B-26NBH Z (PWB)	Slot #6	SRC LEFFLER	44.99	1131.49	11859.83	42.50	1131.49	7.97	11874.71
SRC LEFFLER #H-26NHZ	SRC LEFFLER #H-26NHZ (PWB)	Slot #1	SRC LEFFLER	67.48	852.61	11874.71	65.44	852.61	10.88	11874.71
SRC LEFFLER #24-26NHZ	SRC LEFFLER #24-26NHZ (PWB)	Slot #7	SRC LEFFLER	67.48	1065.87	1065.87	65.10	1065.87	12.68	11874.71
SRC LEFLER #P-26NHZ	SRC LEFLER #P-26NHZ (PWB)	Slot #8	SRC LEFFLER	89.98	951.04	11860.89	87.78	951.04	16.86	11874.71
SRC LEFFLER P-26CHZ	SRC LEFFLER P-26CHZ (PWB)	Slot #9	SRC LEFFLER	112.47	852.61	11859.83	110.43	852.61	19.01	11874.71
MAGNUSO N #23L-201	MAGNUSO N #23L-201 (AWB)	MAGNUSO N #23L-201	SRC LEFFLER OFFSETS	151.56	6529.38	6529.38	124.54	6544.87	5.60	6561.28
SRC LEFFLER #13-26D	SRC LEFFLER #13-26D (AWB)	SRC LEFFLER #13-26D	SRC LEFFLER OFFSETS	304.58	10427.11	10427.11	250.34	10427.11	5.61	10427.11
SRC LEFFLER #14-26D	SRC LEFFLER #14-26D	SRC LEFFLER #14-26D	SRC LEFFLER OFFSETS	317.75	11669.10	11669.10	249.07	11679.39	4.61	11695.79

All data is in Feet unless otherwise stated  
Coordinates are from Slot MD's are from Rig and TVD's are from Rig ( Planned Datum #1 4916.0ft above Mean Sea Level )  
Vertical Section is from 0.00N 0.00E on azimuth 179.140 degrees  
Prepared by Peterson Energy  
Date Printed: 11-Apr-2013



SYSDRILL  
Closest Approach + Clearance Factor Summary Report  
Wellbore: SRC LEFFLER #B-26NAHZ (PWB)  
Wellpath: W #4 (PWP#1)

**Clearance Summary**

Offset WellName	Offset Wellbore	Offset Slot	Offset Structure	Separation [ft]	MD[ft]	Diverging From[ft]	Ellipse Separation [ft]	Ellipse MD[ft]	Clearance Factor	Clearance MD[ft]
MAGNUSO N #23L-421	(AWB) MAGNUSON #23L-421	MAGNUSO N #23L-421	SRC LEFFLER OFFSETS	358.89	1756.91	6676.10	347.14	1787.65	26.05	2378.20
MAGNUSO N #23I-421	(AWB) MAGNUSON #23I-421	MAGNUSO N #23I-421	SRC LEFFLER OFFSETS	473.47	6708.91	6708.91	446.25	6746.52	17.27	6840.15
MAGNUSO N #23I-221	(AWB) MAGNUSON #23I-221	MAGNUSO N #23I-221	SRC LEFFLER OFFSETS	508.80	1000.25	6533.01	504.15	1033.06	31.47	6816.00
MAGNUSS ON #1-23	(AWB) MAGNUSSO N #1-23	MAGNUSS ON #1-23	SRC LEFFLER OFFSETS	671.84	6758.13	6758.13	642.55	6758.13	22.90	6790.93
SRC LEFFLER #24-26D	(AWB) SRC LEFFLER #24-26D	SRC LEFFLER #24-26D	SRC LEFFLER OFFSETS	941.03	11667.88	11667.88	871.00	11679.39	13.15	11827.02
SRC LEFFLER #23-26D	(AWB) SRC LEFFLER #23-26D	SRC LEFFLER #23-26D	SRC LEFFLER OFFSETS	978.19	10394.64	10394.64	922.37	10394.64	17.52	10383.45
TRACY #23M-203	(AWB) TRACY #23M-203	TRACY #23M-203	SRC LEFFLER OFFSETS	1751.37	6974.97	6974.97	1640.86	6971.38	15.81	6916.00
LEFFLER #26Q-421	(AWB) LEFFLER #26Q-421	LEFFLER #26Q-421	SRC LEFFLER OFFSETS	2224.41	11597.36	11597.36	2123.01	7513.74	17.52	7513.74
TRACY #31-23H	(AWB) TRACY #31-23H	TRACY #31-23H	SRC LEFFLER OFFSETS	3015.26	6987.78	6987.78	2892.94	6984.33	24.65	6971.38
SRC LEFLER #23-26DX	(AWB) SRC LEFLER #23-26DX	SRC LEFLER #23-26DX	SRC LEFFLER OFFSETS	3680.19	524.53	10916.00	3677.44	491.72	371.09	11874.71