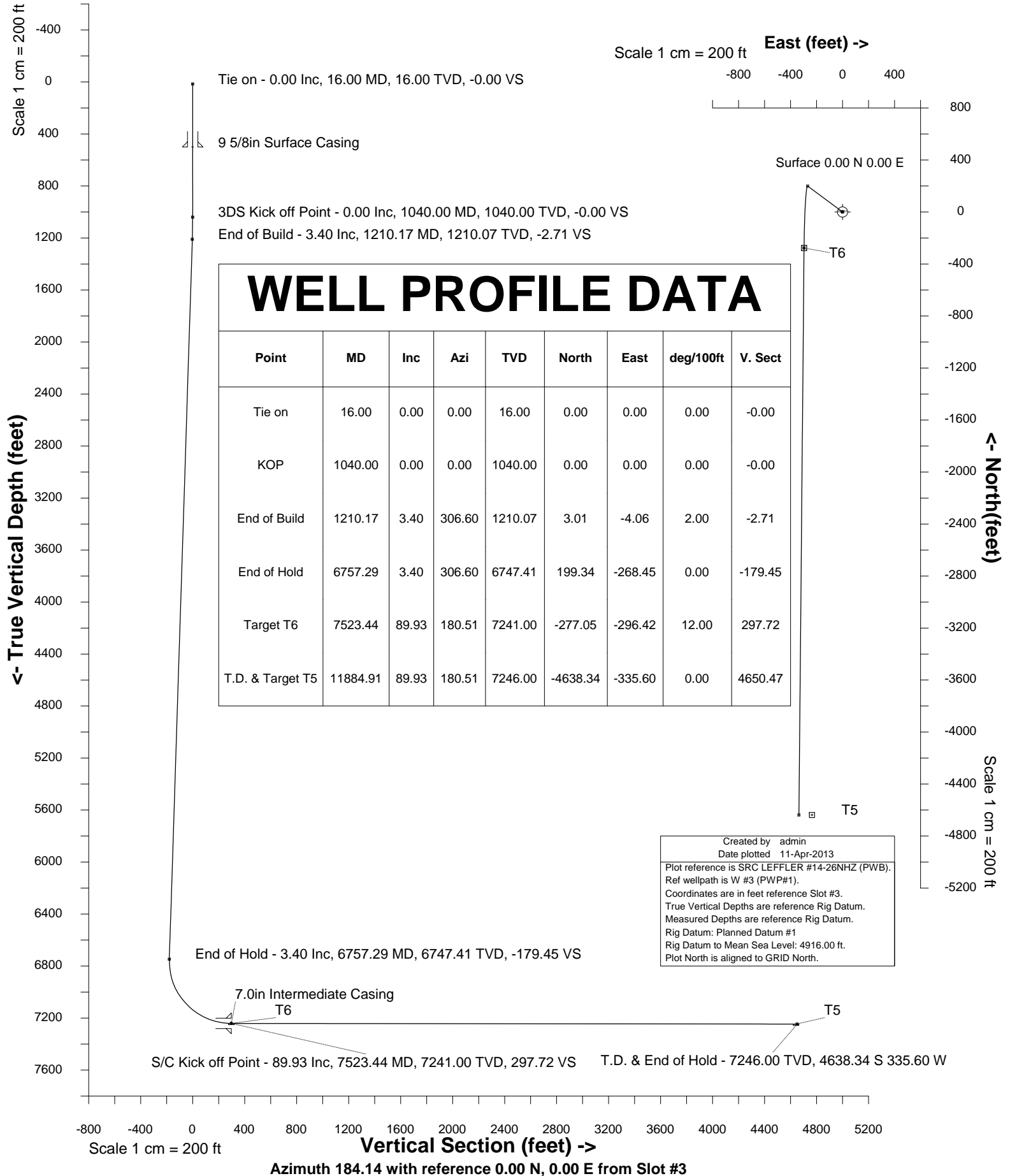


SYNERGY RESOURCES

Location	Weld County, CO, USA(Imported)	Slot	Slot #3
Field	Wattenberg	Well	SRC LEFFLER #14-26NHZ
Installation	SRC LEFFLER	Wellbore	SRC LEFFLER #14-26NHZ (PWB)





SYSDRILL
Well Design Combined Report
Wellbore: SRC LEFFLER #14-26NHZ (PWB)
Wellpath: W #3 (PWP#1)

Wellhead Details

Name	Northing	Easting	Latitude	Longitude	North	East
Slot #3	1445134.6590	3208186.1400	N40 33 10.3689	W104 45 2.8902	1.07N	44.98E

Site Details

Name	Northing	Easting	Coord System Name	North Alignment
SRC LEFFLER	1445133.5911	3208141.1650	CO83-NF on NORTH AMERICAN DATUM 1983 datum	Grid

Summary Wellpath

MD[ft]	Inc[deg]	Azi[deg]	TVD[ft]	North[ft]	East[ft]	Dogleg [deg/100ft]	Vertical Section[ft]	Northing	Easting
16.00	0.00	0.000	16.00	0.00N	0.00E		0.00	1445134.66	3208186.14
1040.00	0.00	0.000	1040.00	0.00N	0.00E	==>	0.00	1445134.66	3208186.14
1210.17	3.40	306.600	1210.07	3.01N	4.06W	2.00	-2.71	1445137.67	3208182.08
6757.29	3.40	306.600	6747.41	199.34N	268.45W	==>	-179.45	1445333.99	3207917.70
7523.44	89.93	180.510	7241.00	277.05S	296.42W	12.00	297.72	1444857.61	3207889.72
11884.91	89.93	180.510	7246.00	4638.34S	335.60W	==>	4650.47	1440496.46	3207850.56

Interpolated Wellpath

MD[ft]	Inc[deg]	Azi[deg]	TVD[ft]	North[ft]	East[ft]	Dogleg [deg/100ft]	Vertical Section[ft]	Northing	Easting
0.00	0.00	0.000	0.00	0.00N	0.00E		0.00	1445134.66	3208186.14
16.00	0.00	0.000	16.00	0.00N	0.00E	==>	0.00	1445134.66	3208186.14
100.00	0.00	0.000	100.00	0.00N	0.00E	==>	0.00	1445134.66	3208186.14
200.00	0.00	0.000	200.00	0.00N	0.00E	==>	0.00	1445134.66	3208186.14
300.00	0.00	0.000	300.00	0.00N	0.00E	==>	0.00	1445134.66	3208186.14
400.00	0.00	0.000	400.00	0.00N	0.00E	==>	0.00	1445134.66	3208186.14
500.00	0.00	0.000	500.00	0.00N	0.00E	==>	0.00	1445134.66	3208186.14
600.00	0.00	0.000	600.00	0.00N	0.00E	==>	0.00	1445134.66	3208186.14
700.00	0.00	0.000	700.00	0.00N	0.00E	==>	0.00	1445134.66	3208186.14
800.00	0.00	0.000	800.00	0.00N	0.00E	==>	0.00	1445134.66	3208186.14
900.00	0.00	0.000	900.00	0.00N	0.00E	==>	0.00	1445134.66	3208186.14
1000.00	0.00	0.000	1000.00	0.00N	0.00E	==>	0.00	1445134.66	3208186.14
1024.00	0.00	0.000	1024.00	0.00N	0.00E	==>	0.00	1445134.66	3208186.14
1040.00	0.00	0.000	1040.00	0.00N	0.00E	==>	0.00	1445134.66	3208186.14
1124.00	1.68	306.600	1123.99	0.73N	0.99W	2.00	-0.66	1445135.39	3208185.15
1200.00	3.20	306.600	1199.92	2.66N	3.59W	2.00	-2.40	1445137.32	3208182.55
1210.17	3.40	306.600	1210.07	3.01N	4.06W	2.00	-2.71	1445137.67	3208182.08
1300.00	3.40	306.600	1299.74	6.19N	8.34W	==>	-5.57	1445140.85	3208177.80
1400.00	3.40	306.600	1399.57	9.73N	13.10W	==>	-8.76	1445144.39	3208173.04
1500.00	3.40	306.600	1499.39	13.27N	17.87W	==>	-11.95	1445147.93	3208168.27
1600.00	3.40	306.600	1599.21	16.81N	22.64W	==>	-15.13	1445151.47	3208163.50
1700.00	3.40	306.600	1699.04	20.35N	27.40W	==>	-18.32	1445155.01	3208158.74
1800.00	3.40	306.600	1798.86	23.89N	32.17W	==>	-21.50	1445158.55	3208153.97
1900.00	3.40	306.600	1898.68	27.43N	36.94W	==>	-24.69	1445162.09	3208149.21
2000.00	3.40	306.600	1998.51	30.97N	41.70W	==>	-27.88	1445165.62	3208144.44
2100.00	3.40	306.600	2098.33	34.51N	46.47W	==>	-31.06	1445169.16	3208139.67
2200.00	3.40	306.600	2198.15	38.05N	51.23W	==>	-34.25	1445172.70	3208134.91
2300.00	3.40	306.600	2297.98	41.58N	56.00W	==>	-37.43	1445176.24	3208130.14
2400.00	3.40	306.600	2397.80	45.12N	60.77W	==>	-40.62	1445179.78	3208125.37
2500.00	3.40	306.600	2497.63	48.66N	65.53W	==>	-43.81	1445183.32	3208120.61
2600.00	3.40	306.600	2597.45	52.20N	70.30W	==>	-46.99	1445186.86	3208115.84
2700.00	3.40	306.600	2697.27	55.74N	75.07W	==>	-50.18	1445190.40	3208111.08
2800.00	3.40	306.600	2797.10	59.28N	79.83W	==>	-53.37	1445193.94	3208106.31
2900.00	3.40	306.600	2896.92	62.82N	84.60W	==>	-56.55	1445197.48	3208101.54
3000.00	3.40	306.600	2996.74	66.36N	89.36W	==>	-59.74	1445201.02	3208096.78
3100.00	3.40	306.600	3096.57	69.90N	94.13W	==>	-62.92	1445204.56	3208092.01
3200.00	3.40	306.600	3196.39	73.44N	98.90W	==>	-66.11	1445208.09	3208087.25
3300.00	3.40	306.600	3296.21	76.98N	103.66W	==>	-69.30	1445211.63	3208082.48
3400.00	3.40	306.600	3396.04	80.52N	108.43W	==>	-72.48	1445215.17	3208077.71
3500.00	3.40	306.600	3495.86	84.06N	113.20W	==>	-75.67	1445218.71	3208072.95
3600.00	3.40	306.600	3595.68	87.60N	117.96W	==>	-78.85	1445222.25	3208068.18
3700.00	3.40	306.600	3695.51	91.13N	122.73W	==>	-82.04	1445225.79	3208063.41
3800.00	3.40	306.600	3795.33	94.67N	127.50W	==>	-85.23	1445229.33	3208058.65
3900.00	3.40	306.600	3895.16	98.21N	132.26W	==>	-88.41	1445232.87	3208053.88
4000.00	3.40	306.600	3994.98	101.75N	137.03W	==>	-91.60	1445236.41	3208049.12
4100.00	3.40	306.600	4094.80	105.29N	141.79W	==>	-94.78	1445239.95	3208044.35
4200.00	3.40	306.600	4194.63	108.83N	146.56W	==>	-97.97	1445243.49	3208039.58
4300.00	3.40	306.600	4294.45	112.37N	151.33W	==>	-101.16	1445247.03	3208034.82
4400.00	3.40	306.600	4394.27	115.91N	156.09W	==>	-104.34	1445250.56	3208030.05
4500.00	3.40	306.600	4494.10	119.45N	160.86W	==>	-107.53	1445254.10	3208025.29
4600.00	3.40	306.600	4593.92	122.99N	165.63W	==>	-110.72	1445257.64	3208020.52
4700.00	3.40	306.600	4693.74	126.53N	170.39W	==>	-113.90	1445261.18	3208015.75
4800.00	3.40	306.600	4793.57	130.07N	175.16W	==>	-117.09	1445264.72	3208010.99

All data is in Feet unless otherwise stated
Coordinates are from Slot MD's are from Rig and TVD's are from Rig (Planned Datum #1 4916.0ft above Mean Sea Level)
Vertical Section is from 0.00N 0.00E on azimuth 184.140 degrees
Bottom hole distance is 4650.47 Feet on azimuth 184.14 degrees from Wellhead
Calculation method uses Minimum Curvature method
Prepared by Peterson Energy
Date Printed: 11-Apr-2013



SYSDRILL
Well Design Combined Report
Wellbore: SRC LEFFLER #14-26NHZ (PWB)
Wellpath: W #3 (PWP#1)

Interpolated Wellpath

MD[ft]	Inc[deg]	Azi[deg]	TVD[ft]	North[ft]	East[ft]	Dogleg [deg/100ft]	Vertical Section[ft]	Northing	Easting
4900.00	3.40	306.600	4893.39	133.61N	179.92W	==>	-120.27	1445268.26	3208006.22
5000.00	3.40	306.600	4993.22	137.14N	184.69W	==>	-123.46	1445271.80	3208001.46
5100.00	3.40	306.600	5093.04	140.68N	189.46W	==>	-126.65	1445275.34	3207996.69
5200.00	3.40	306.600	5192.86	144.22N	194.22W	==>	-129.83	1445278.88	3207991.92
5300.00	3.40	306.600	5292.69	147.76N	198.99W	==>	-133.02	1445282.42	3207987.16
5400.00	3.40	306.600	5392.51	151.30N	203.76W	==>	-136.20	1445285.96	3207982.39
5500.00	3.40	306.600	5492.33	154.84N	208.52W	==>	-139.39	1445289.50	3207977.62
5600.00	3.40	306.600	5592.16	158.38N	213.29W	==>	-142.58	1445293.03	3207972.86
5700.00	3.40	306.600	5691.98	161.92N	218.05W	==>	-145.76	1445296.57	3207968.09
5800.00	3.40	306.600	5791.80	165.46N	222.82W	==>	-148.95	1445300.11	3207963.33
5900.00	3.40	306.600	5891.63	169.00N	227.59W	==>	-152.13	1445303.65	3207958.56
6000.00	3.40	306.600	5991.45	172.54N	232.35W	==>	-155.32	1445307.19	3207953.79
6100.00	3.40	306.600	6091.28	176.08N	237.12W	==>	-158.51	1445310.73	3207949.03
6200.00	3.40	306.600	6191.10	179.62N	241.89W	==>	-161.69	1445314.27	3207944.26
6300.00	3.40	306.600	6290.92	183.16N	246.65W	==>	-164.88	1445317.81	3207939.50
6400.00	3.40	306.600	6390.75	186.69N	251.42W	==>	-168.06	1445321.35	3207934.73
6500.00	3.40	306.600	6490.57	190.23N	256.18W	==>	-171.25	1445324.89	3207929.96
6600.00	3.40	306.600	6590.39	193.77N	260.95W	==>	-174.44	1445328.43	3207925.20
6700.00	3.40	306.600	6690.22	197.31N	265.72W	==>	-177.62	1445331.97	3207920.43
6757.29	3.40	306.600	6747.41	199.34N	268.45W	==>	-179.45	1445333.99	3207917.70
6800.00	4.16	221.870	6790.05	198.94N	270.50W	12.00	-178.90	1445333.60	3207915.65
6900.00	15.36	190.590	6888.49	183.16N	275.37W	12.00	-162.81	1445317.82	3207910.78
7000.00	27.25	185.870	6981.50	147.24N	280.16W	12.00	-126.63	1445281.89	3207905.98
7100.00	39.20	183.890	7065.00	92.73N	284.66W	12.00	-71.95	1445227.39	3207901.48
7200.00	51.17	182.730	7135.35	22.04N	288.68W	12.00	-1.15	1445156.69	3207897.47
7300.00	63.15	181.910	7189.48	61.77S	292.03W	12.00	82.68	1445072.89	3207894.12
7400.00	75.14	181.240	7225.01	155.01S	294.57W	12.00	175.86	1444979.65	3207891.58
7500.00	87.12	180.650	7240.40	253.62S	296.19W	12.00	274.33	1444881.05	3207889.96
7523.44	89.93	180.510	7241.00	277.05S	296.42W	12.00	297.72	1444857.61	3207889.72
7600.00	89.93	180.510	7241.09	353.61S	297.11W	==>	374.12	1444781.06	3207889.04
7700.00	89.93	180.510	7241.20	453.60S	298.01W	==>	473.92	1444681.07	3207888.14
7800.00	89.93	180.510	7241.32	553.60S	298.91W	==>	573.72	1444581.08	3207887.24
7900.00	89.93	180.510	7241.43	653.59S	299.81W	==>	673.52	1444481.09	3207886.34
8000.00	89.93	180.510	7241.55	753.59S	300.70W	==>	773.32	1444381.09	3207885.45
8100.00	89.93	180.510	7241.66	853.59S	301.60W	==>	873.12	1444281.10	3207884.55
8200.00	89.93	180.510	7241.78	953.58S	302.50W	==>	972.92	1444181.11	3207883.65
8300.00	89.93	180.510	7241.89	1053.58S	303.40W	==>	1072.72	1444081.11	3207882.75
8400.00	89.93	180.510	7242.00	1153.57S	304.30W	==>	1172.52	1443981.12	3207881.85
8500.00	89.93	180.510	7242.12	1253.57S	305.19W	==>	1272.32	1443881.13	3207880.95
8600.00	89.93	180.510	7242.23	1353.57S	306.09W	==>	1372.12	1443781.14	3207880.06
8700.00	89.93	180.510	7242.35	1453.56S	306.99W	==>	1471.92	1443681.14	3207879.16
8800.00	89.93	180.510	7242.46	1553.56S	307.89W	==>	1571.72	1443581.15	3207878.26
8900.00	89.93	180.510	7242.58	1653.55S	308.79W	==>	1671.52	1443481.16	3207877.36
9000.00	89.93	180.510	7242.69	1753.55S	309.69W	==>	1771.32	1443381.17	3207876.46
9100.00	89.93	180.510	7242.81	1853.54S	310.58W	==>	1871.12	1443281.17	3207875.57
9200.00	89.93	180.510	7242.92	1953.54S	311.48W	==>	1970.92	1443181.18	3207874.67
9300.00	89.93	180.510	7243.04	2053.54S	312.38W	==>	2070.72	1443081.19	3207873.77
9400.00	89.93	180.510	7243.15	2153.53S	313.28W	==>	2170.52	1442981.19	3207872.87
9500.00	89.93	180.510	7243.27	2253.53S	314.18W	==>	2270.32	1442881.20	3207871.97
9600.00	89.93	180.510	7243.38	2353.52S	315.07W	==>	2370.12	1442781.21	3207871.08
9700.00	89.93	180.510	7243.50	2453.52S	315.97W	==>	2469.92	1442681.22	3207870.18
9800.00	89.93	180.510	7243.61	2553.52S	316.87W	==>	2569.72	1442581.22	3207869.28
9900.00	89.93	180.510	7243.72	2653.51S	317.77W	==>	2669.52	1442481.23	3207868.38
10000.00	89.93	180.510	7243.84	2753.51S	318.67W	==>	2769.32	1442381.24	3207867.48
10100.00	89.93	180.510	7243.95	2853.50S	319.56W	==>	2869.12	1442281.24	3207866.59
10200.00	89.93	180.510	7244.07	2953.50S	320.46W	==>	2968.92	1442181.25	3207865.69
10300.00	89.93	180.510	7244.18	3053.50S	321.36W	==>	3068.72	1442081.26	3207864.79
10400.00	89.93	180.510	7244.30	3153.49S	322.26W	==>	3168.52	1441981.27	3207863.89
10500.00	89.93	180.510	7244.41	3253.49S	323.16W	==>	3268.32	1441881.27	3207862.99
10600.00	89.93	180.510	7244.53	3353.48S	324.06W	==>	3368.12	1441781.28	3207862.09
10700.00	89.93	180.510	7244.64	3453.48S	324.95W	==>	3467.92	1441681.29	3207861.20
10800.00	89.93	180.510	7244.76	3553.47S	325.85W	==>	3567.72	1441581.30	3207860.30
10900.00	89.93	180.510	7244.87	3653.47S	326.75W	==>	3667.52	1441481.30	3207859.40
11000.00	89.93	180.510	7244.99	3753.47S	327.65W	==>	3767.32	1441381.31	3207858.50
11100.00	89.93	180.510	7245.10	3853.46S	328.55W	==>	3867.12	1441281.32	3207857.60
11200.00	89.93	180.510	7245.21	3953.46S	329.44W	==>	3966.92	1441181.32	3207856.71
11300.00	89.93	180.510	7245.33	4053.45S	330.34W	==>	4066.72	1441081.33	3207855.81
11400.00	89.93	180.510	7245.44	4153.45S	331.24W	==>	4166.52	1440981.34	3207854.91
11500.00	89.93	180.510	7245.56	4253.45S	332.14W	==>	4266.32	1440881.35	3207854.01
11600.00	89.93	180.510	7245.67	4353.44S	333.04W	==>	4366.12	1440781.35	3207853.11
11700.00	89.93	180.510	7245.79	4453.44S	333.93W	==>	4465.92	1440681.36	3207852.22
11800.00	89.93	180.510	7245.90	4553.43S	334.83W	==>	4565.72	1440581.37	3207851.32
11884.91	89.93	180.510	7246.00	4638.34S	335.60W	==>	4650.47	1440496.46	3207850.56

All data is in Feet unless otherwise stated
Coordinates are from Slot MD's are from Rig and TVD's are from Rig (Planned Datum #1 4916.0ft above Mean Sea Level)
Vertical Section is from 0.00N 0.00E on azimuth 184.140 degrees
Bottom hole distance is 4650.47 Feet on azimuth 184.14 degrees from Wellhead
Calculation method uses Minimum Curvature method
Prepared by Peterson Energy
Date Printed: 11-Apr-2013



SYSDRILL
Well Design Combined Report
Wellbore: SRC LEFFLER #14-26NHZ (PWB)
Wellpath: W #3 (PWP#1)

Hole Sections

Diameter [in]	Start MD[ft]	Start TVD[ft]	Start North[ft]	Start East[ft]	End MD[ft]	End TVD[ft]	End North[ft]	End East[ft]	Wellbore
12 1/4	16.00	16.00	0.00N	0.00E	500.00	500.00	0.00N	0.00E	SRC LEFFLER #14-26NHZ (PWB)
8 5/8	500.00	500.00	0.00N	0.00E	7523.00	7241.00	276.61S	296.42W	SRC LEFFLER #14-26NHZ (PWB)
6 1/8	7523.00	7241.00	276.61S	296.42W	11884.93	7246.00	4638.36S	335.60W	SRC LEFFLER #14-26NHZ (PWB)

Casings

Name	Top MD[ft]	Top TVD[ft]	Top North[ft]	Top East[ft]	Shoe MD[ft]	Shoe TVD[ft]	Shoe North[ft]	Shoe East[ft]	Wellbore
9 5/8in Surface Casing	16.00	16.00	0.00N	0.00E	500.00	500.00	0.00N	0.00E	SRC LEFFLER #14-26NHZ (PWB)
7.0in Intermediate Casing	16.00	16.00	0.00N	0.00E	7523.00	7241.00	276.61S	296.42W	SRC LEFFLER #14-26NHZ (PWB)
4 1/2in Production Liner	6757.00	6747.12	199.33N	268.43W	11884.93		4638.36S	335.60W	SRC LEFFLER #14-26NHZ (PWB)

Targets

Name	North[ft]	East[ft]	TVD[ft]	Latitude	Longitude	Northing	Easting	Last Revised
T5	4637.68S	235.41W	7246.00	N40 32 24.5634	W104 45 6.4467	1440497.12	3207950.74	8-Apr-2013
T6	277.05S	296.42W	7241.00	N40 33 7.6561	W104 45 6.7604	1444857.61	3207889.72	8-Apr-2013

Survey Tool Program

Reference	Survey Name	MD[ft]	TVD[ft]	Survey Tool	Error Model
17353	Planned	11884.91	7246.00	WdW Rate Gyro	Standard

Notes

All data is in Feet unless otherwise stated
Coordinates are from Slot MD's are from Rig and TVD's are from Rig (Planned Datum #1 4916.0ft above Mean Sea Level)
Vertical Section is from 0.00N 0.00E on azimuth 184.140 degrees
Bottom hole distance is 4650.47 Feet on azimuth 184.14 degrees from Wellhead
Calculation method uses Minimum Curvature method
Prepared by Peterson Energy
Date Printed: 11-Apr-2013



SYSDRILL
Closest Approach + Clearance Factor Summary Report
Wellbore: SRC LEFFLER #14-26NHZ (PWB)
Wellpath: W #3 (PWP#1)

Ellipse separations are reported ONLY if BOTH wells have uncertainty data
Only Depth and Magnetic Reference Field error terms are correlated across tie points
Cutoff is calculated on CENTRE to CENTRE distance

Summary data uses Closest Approach clearance calculation for all minima
Hole size/Casings ARE included
Hole size/Casings are NOT subtracted from Centre-Centre distance
Confidence limit of 95.00% / 2.80 SD.

Wellbore

Name	Created	Last Revised
SRC LEFFLER #14-26NHZ (PWB)	1-Apr-2013	10-Apr-2013

Well

Name	Government ID	Last Revised
SRC LEFFLER #14-26NHZ		1-Apr-2013

Slot

Name	Grid Northing	Grid Easting	Latitude	Longitude	North	East
Slot #3	1445134.6590	3208186.1400	N40 33 10.3689	W104 45 2.8902	1.07N	44.98E

Installation

Name	Easting	Northing	Coord System Name	North Alignment
SRC LEFFLER	3208141.1650	1445133.5911	CO83-NF on NORTH AMERICAN DATUM 1983 datum	Grid

Field

Name	Easting	Northing	Coord System Name	North Alignment
Wattenberg	41136929.7567	12284170.6461	CO83-NF on NORTH AMERICAN DATUM 1983 datum	Grid

Clearance Summary

Offset WellName	Offset Wellbore	Offset Slot	Offset Structure	Separation [ft]	MD[ft]	Diverging From[ft]	Ellipse Separation [ft]	Ellipse MD[ft]	Clearance Factor	Clearance MD[ft]
SRC LEFFLER #H-26CHZ	SRC LEFFLER #H-26CHZ (PWB)	Slot #2	SRC LEFFLER	22.50	967.44	11884.91	20.31	967.44	4.47	11884.91
SRC LEFFLER #B-26NAHZ	SRC LEFFLER #B-26NAHZ (PWB)	Slot #4	SRC LEFFLER	22.50	1040.00	1040.00	20.19	1049.46	5.08	11884.91
SRC LEFFLER #H-26NHZ	SRC LEFFLER #H-26NHZ (PWB)	Slot #1	SRC LEFFLER	44.99	852.61	11884.91	42.99	852.61	5.79	11884.91
SRC LEFFLER #B-26CHZ	SRC LEFFLER #B-26CHZ (PWB)	Slot #5	SRC LEFFLER	44.99	1040.00	1040.00	42.69	1049.46	11.31	11884.91
SRC LEFFLER #B-26NBH	SRC LEFFLER #B-26NBHZ (PWB)	Slot #6	SRC LEFFLER	67.49	1040.00	1040.00	65.18	1049.46	13.06	11884.91
SRC LEFFLER #13-26D	SRC LEFFLER #13-26D (AWB)	SRC LEFFLER #13-26D	SRC LEFFLER OFFSETS	88.38	10431.13	10431.13	34.05	10432.67	1.63	10432.67
SRC LEFFLER #24-26NHZ	SRC LEFFLER #24-26NHZ (PWB)	Slot #7	SRC LEFFLER	89.98	1040.00	1040.00	87.68	1049.46	17.76	11884.91
SRC LEFFLER #14-26D	SRC LEFFLER #14-26D (AWB)	SRC LEFFLER #14-26D	SRC LEFFLER OFFSETS	104.03	11677.50	11677.50	35.10	11677.50	1.51	11677.50
SRC LEFFLER #P-26NHZ	SRC LEFFLER #P-26NHZ (PWB)	Slot #8	SRC LEFFLER	112.47	951.04	951.04	110.32	951.04	21.94	11884.91
SRC LEFFLER P-26CHZ	SRC LEFFLER P-26CHZ (PWB)	Slot #9	SRC LEFFLER	134.97	852.61	852.61	132.97	852.61	24.04	11884.91

All data is in Feet unless otherwise stated
Coordinates are from Slot MD's are from Rig and TVD's are from Rig (Planned Datum #1 4916.0ft above Mean Sea Level)
Vertical Section is from 0.00N 0.00E on azimuth 184.140 degrees
Prepared by Peterson Energy
Date Printed: 11-Apr-2013



SYSDRILL
Closest Approach + Clearance Factor Summary Report
Wellbore: SRC LEFFLER #14-26NHZ (PWB)
Wellpath: W #3 (PWP#1)

Clearance Summary

Offset WellName	Offset Wellbore	Offset Slot	Offset Structure	Separation [ft]	MD[ft]	Diverging From[ft]	Ellipse Separation [ft]	Ellipse MD[ft]	Clearance Factor	Clearance MD[ft]
MAGNUSO N #23I-421	MAGNUSON #23I-421 (AWB)	MAGNUSO N #23I-421	SRC LEFFLER OFFSETS	185.70	6790.93	6790.93	158.34	6790.93	6.78	6807.34
MAGNUSO N #23L-201	MAGNUSON #23L-201 (AWB)	MAGNUSO N #23L-201	SRC LEFFLER OFFSETS	266.29	3920.20	3920.20	249.33	3953.01	14.65	4510.75
MAGNUSO N #23L-421	MAGNUSON #23L-421 (AWB)	MAGNUSO N #23L-421	SRC LEFFLER OFFSETS	368.52	1541.70	1541.70	358.54	1574.40	30.70	2148.55
MAGNUSO N #23I-221	MAGNUSON #23I-221 (AWB)	MAGNUSO N #23I-221	SRC LEFFLER OFFSETS	489.75	1672.82	6744.41	482.25	1869.67	20.94	6816.00
MAGNUSS ON #1-23	MAGNUSSO N #1-23 (AWB)	MAGNUSS ON #1-23	SRC LEFFLER OFFSETS	583.79	6774.53	6774.53	554.17	6774.53	19.68	6807.34
SRC LEFFLER #24-26D	SRC LEFFLER #24-26D (AWB)	SRC LEFFLER #24-26D	SRC LEFFLER OFFSETS	1363.21	11646.58	11646.58	1293.67	11662.98	19.12	11884.91
SRC LEFFLER #23-26D	SRC LEFFLER #23-26D (AWB)	SRC LEFFLER #23-26D	SRC LEFFLER OFFSETS	1370.71	10370.52	10370.52	1314.92	10370.52	24.57	10367.05
TRACY #23M-203	TRACY #23M-203 (AWB)	TRACY #23M-203	SRC LEFFLER OFFSETS	2037.08	6938.57	6938.57	1923.30	6938.57	17.89	6905.76
LEFFLER #26Q-421	LEFFLER #26Q-421 (AWB)	LEFFLER #26Q-421	SRC LEFFLER OFFSETS	2576.97	7457.35	7457.35	2448.69	7479.91	20.06	7516.00
TRACY #31-23H	TRACY #31-23H (AWB)	TRACY #31-23H	SRC LEFFLER OFFSETS	3310.78	6916.00	6916.00	3188.00	6916.00	26.96	6938.57
SRC LEFFLER #23-26DX	SRC LEFFLER #23-26DX (AWB)	SRC LEFFLER #23-26DX	SRC LEFFLER OFFSETS	3680.57	524.53	10916.00	3677.82	491.72	368.59	11884.91