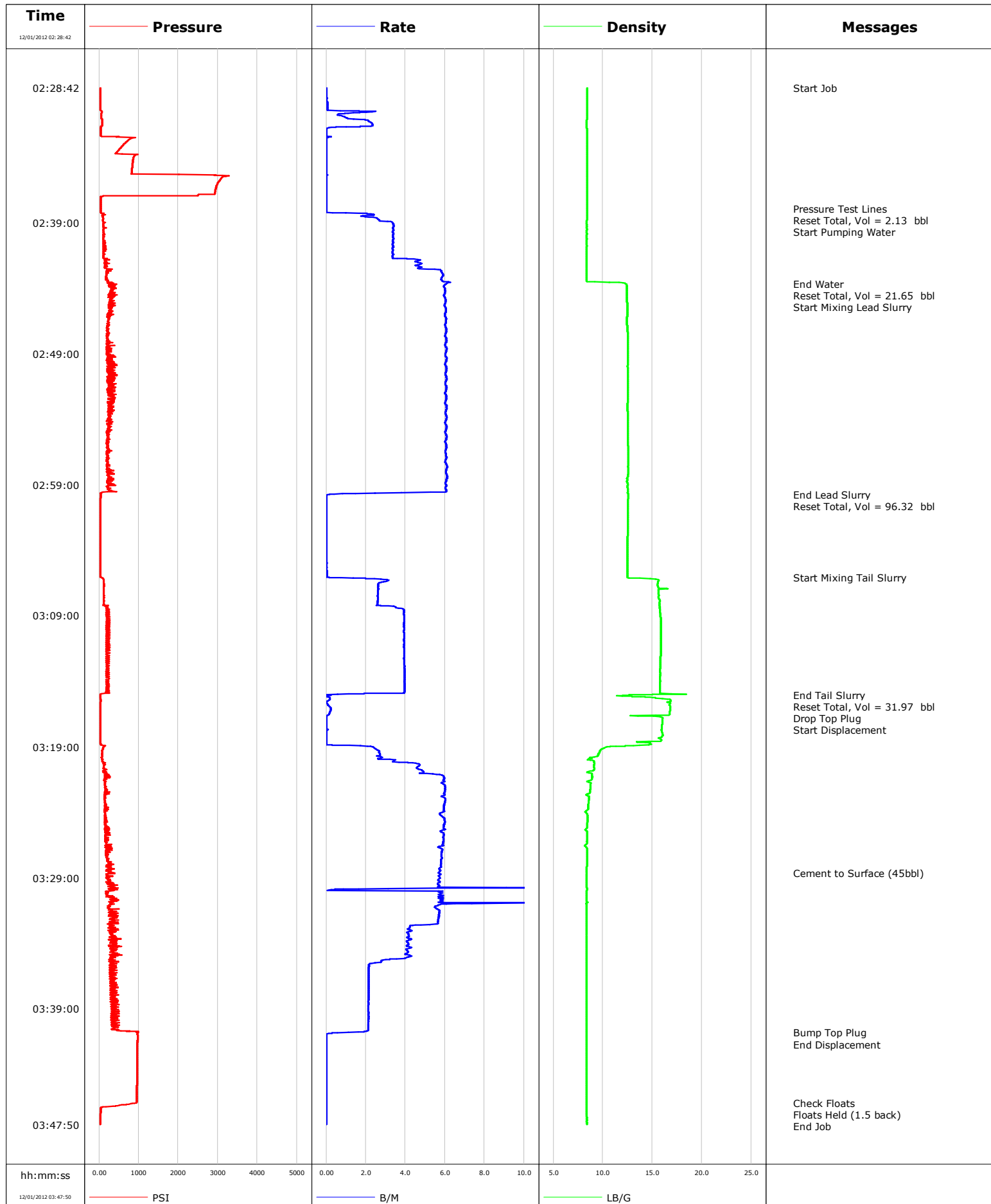


Well	Sheidler Fee 6-6DD	Client	Encana
Field	Mamm Creek	SIR No.	CE6H-00017
Engineer		Job Type	Surface
Country	United States	Job Date	11-30-2012





Cementing Service Report

				Customer Encana			Job Number CE6H-00017								
Well Sheidler Fee 6-6DD			Location (legal)			Schlumberger Location		Job Start Nov/30/2012							
Field Mamm Creek		Formation Name/Type		Deviation		Bit Size		Well MD		Well TVD					
County Garfield		State/Province Colorado		BHP		BHST		BHCT		Pore Press. Gradient					
Well Master		API/UWI													
Rig Name		Drilled For Gas		Service Via Land		Casing/Liner									
						Depth, ft		Size, in		Weight, lb/ft		Grade		Thread	
Offshore Zone		Well Class New		Well Type Exploration		1208.5		9.630		36.0		J55		8RD	
						0.0		0.000		0.0					
Drilling Fluid Type		Max. Density		Plastic Viscosity		Tubing/Drill Pipe									
						Depth,		Size,		Weight,		Grade		Thread	
Service Line Cementing		Job Type Surface													
Max. Allowed Tub. Press		Max. Allowed Ann. Press		WH Connection		Perforations/Open Hole									
						Top,		Bottom,				No. of Shots		Total Interval	
Service Instructions														Diameter	
Treat Down Casing				Displacement 90.0 bbl				Packer Type				Packer Depth			
Tubing Vol.				Casing Vol.				Annular Vol.				Openhole Vol.			
Casing/Tubing Secured <input checked="" type="checkbox"/>		1 Hole Vol. Circulated prior to Cement <input checked="" type="checkbox"/>				Casing Tools				Squeeze Job					
Lift Pressure 400 psi				Shoe Type Guide				Squeeze Type							
Pipe Rotated <input type="checkbox"/>		Pipe Reciprocated <input type="checkbox"/>		Shoe Depth 1208.0 ft				Tool Type							
No. Centralizers		Top Plugs 1		Bottom Plugs		Stage Tool Type				Tool Depth					
Cement Head Type Single				Stage Tool Depth						Tail Pipe Size					
Job Scheduled For Nov/30/2012		Arrived on Location Nov/30/2012		Leave Location Nov/30/2012		Collar Type Float				Tail Pipe Depth					
						Collar Depth 1164.9 ft				Sqz. Total Vol.					
Date	Time 24-hr clock	Treating Pressure PSI	Flow Rate B/M	Density LB/G	Volume BBL	Stage BBL	Message								
12/01/2012	02:28:42	28	0.0	8.41	0.0	0.0									
12/01/2012	02:28:44						Start Job								
12/01/2012	02:28:44	28	0.0	8.41	0.0	0.0									
12/01/2012	02:31:12	83	2.1	8.38	1.0	1.0									
12/01/2012	02:33:42	423	0.0	8.38	2.1	2.1									
12/01/2012	02:36:12	2964	0.0	8.39	2.1	2.1									
12/01/2012	02:37:56						Pressure Test Lines								
12/01/2012	02:37:56	44	0.0	8.39	2.1	2.1									
12/01/2012	02:37:58						Reset Total, Vol = 2.13 bbl								
12/01/2012	02:37:58	44	0.0	8.39	2.1	2.1									
12/01/2012	02:38:08						Start Pumping Water								
12/01/2012	02:38:08	43	0.0	8.39	0.0	0.0									
12/01/2012	02:38:42	98	2.6	8.38	1.0	1.0									
12/01/2012	02:41:12	106	3.3	8.38	9.3	9.3									
12/01/2012	02:43:40						End Water								
12/01/2012	02:43:40	323	6.1	12.34	21.4	21.4									
12/01/2012	02:43:42						Reset Total, Vol = 21.65 bbl								
12/01/2012	02:43:42	435	6.0	12.37	21.6	21.6									
12/01/2012	02:43:44						Start Mixing Lead Slurry								
12/01/2012	02:43:44	317	6.0	12.40	21.9	0.2									
12/01/2012	02:46:12	205	6.0	12.45	36.6	15.0									

Well Sheidler Fee 6-6DD			Field Mamm Creek		Job Start Nov/30/2012		Customer Encana		Job Number CE6H-00017
Date	Time 24-hr clock	Treating Pressure PSI	Flow Rate B/M	Density LB/G	Volume BBL	Stage BBL	Message		
12/01/2012	02:51:12	333	6.0	12.50	66.9	45.2			
12/01/2012	02:53:42	227	6.1	12.51	82.0	60.4			
12/01/2012	02:56:12	223	6.1	12.58	97.2	75.5			
12/01/2012	02:58:42	205	6.1	12.46	112.3	90.7			
12/01/2012	02:59:44						End Lead Slurry		
12/01/2012	02:59:44	42	0.2	12.57	118.0	96.3			
12/01/2012	03:00:00						Reset Total, Vol = 96.32 bbl		
12/01/2012	03:00:00	39	0.0	12.56	118.0	96.3			
12/01/2012	03:01:12	33	0.0	12.52	118.0	0.0			
12/01/2012	03:03:42	33	0.0	12.49	118.0	0.0			
12/01/2012	03:06:04						Start Mixing Tail Slurry		
12/01/2012	03:06:04	65	0.1	12.47	118.0	0.0			
12/01/2012	03:06:12	108	2.8	15.33	118.2	0.2			
12/01/2012	03:08:42	233	3.9	15.78	125.3	7.4			
12/01/2012	03:11:12	179	3.9	15.85	135.1	17.2			
12/01/2012	03:13:42	190	4.0	15.78	145.0	27.0			
12/01/2012	03:15:03						End Tail Slurry		
12/01/2012	03:15:03	29	0.0	12.69	149.9	32.0			
12/01/2012	03:15:06						Reset Total, Vol = 31.97 bbl		
12/01/2012	03:15:06	30	0.1	12.04	149.9	32.0			
12/01/2012	03:15:08						Drop Top Plug		
12/01/2012	03:15:08	30	0.0	11.98	149.9	0.0			
12/01/2012	03:15:09						Start Displacement		
12/01/2012	03:15:09	30	0.0	12.97	149.9	0.0			
12/01/2012	03:16:12	31	0.2	16.79	150.1	0.1			
12/01/2012	03:18:42	35	0.0	14.73	150.2	0.2			
12/01/2012	03:21:12	141	5.9	8.92	158.6	8.6			
12/01/2012	03:23:42	222	5.9	8.49	173.5	23.5			
12/01/2012	03:26:12	164	5.9	8.39	188.3	38.3			
12/01/2012	03:28:38						Cement to Surface (45bbl)		
12/01/2012	03:28:38	228	5.7	8.38	202.4	52.5			
12/01/2012	03:28:42	203	5.8	8.38	202.8	52.8			
12/01/2012	03:31:12	283	5.5	8.37	216.7	66.8			
12/01/2012	03:33:42	317	4.3	8.38	229.2	79.3			
12/01/2012	03:36:12	339	2.2	8.37	237.8	87.8			
12/01/2012	03:38:42	329	2.1	8.38	243.1	93.2			
12/01/2012	03:40:49						Bump Top Plug		
12/01/2012	03:40:49	944	1.1	8.38	247.6	97.7			
12/01/2012	03:40:51						End Displacement		
12/01/2012	03:40:51	975	0.3	8.38	247.6	97.7			
12/01/2012	03:41:12	970	0.0	8.38	247.6	97.7			
12/01/2012	03:43:42	960	0.0	8.38	247.6	97.7			
12/01/2012	03:46:12						Check Floats		
12/01/2012	03:46:12	932	0.0	8.38	247.6	97.7			
12/01/2012	03:46:37						Floats Held (1.5 back)		
12/01/2012	03:46:37	40	0.0	8.38	247.6	97.7			
12/01/2012	03:47:47						End Job		

Well Sheidler Fee 6-6DD	Field Mamm Creek	Job Start Nov/30/2012	Customer Encana	Job Number CE6H-00017
-----------------------------------	----------------------------	---------------------------------	---------------------------	---------------------------------

Post Job Summary

Average Pump Rates, bbl/min					Volume of Fluid Injected, bbl			
Slurry 4.2	N2	Mud 0.0	Maximum Rate 11.7		Total Slurry 128.0	Mud 0.0	Spacer 21.8	N2
Treating Pressure Summary, psi					Breakdown Fluid			
Maximum 3277	Final 26	Average 322	Bump Plug to 970	Breakdown	Type	Volume		Density
Avg. N2 Percent		Designed Slurry Volume 120.0 bbl	Displacement 89.0 bbl	Mix Water Temp 65 degF	Cement Circulated to Surface? <input checked="" type="checkbox"/>	Volume 45.0 bbl		
					Washed Thru Perfs <input type="checkbox"/>	To		
Customer or Authorized Representative Erasmo Parras			Schlumberger Supervisor			Circulation Lost <input type="checkbox"/>	Job Completed <input type="checkbox"/>	
					-		-	