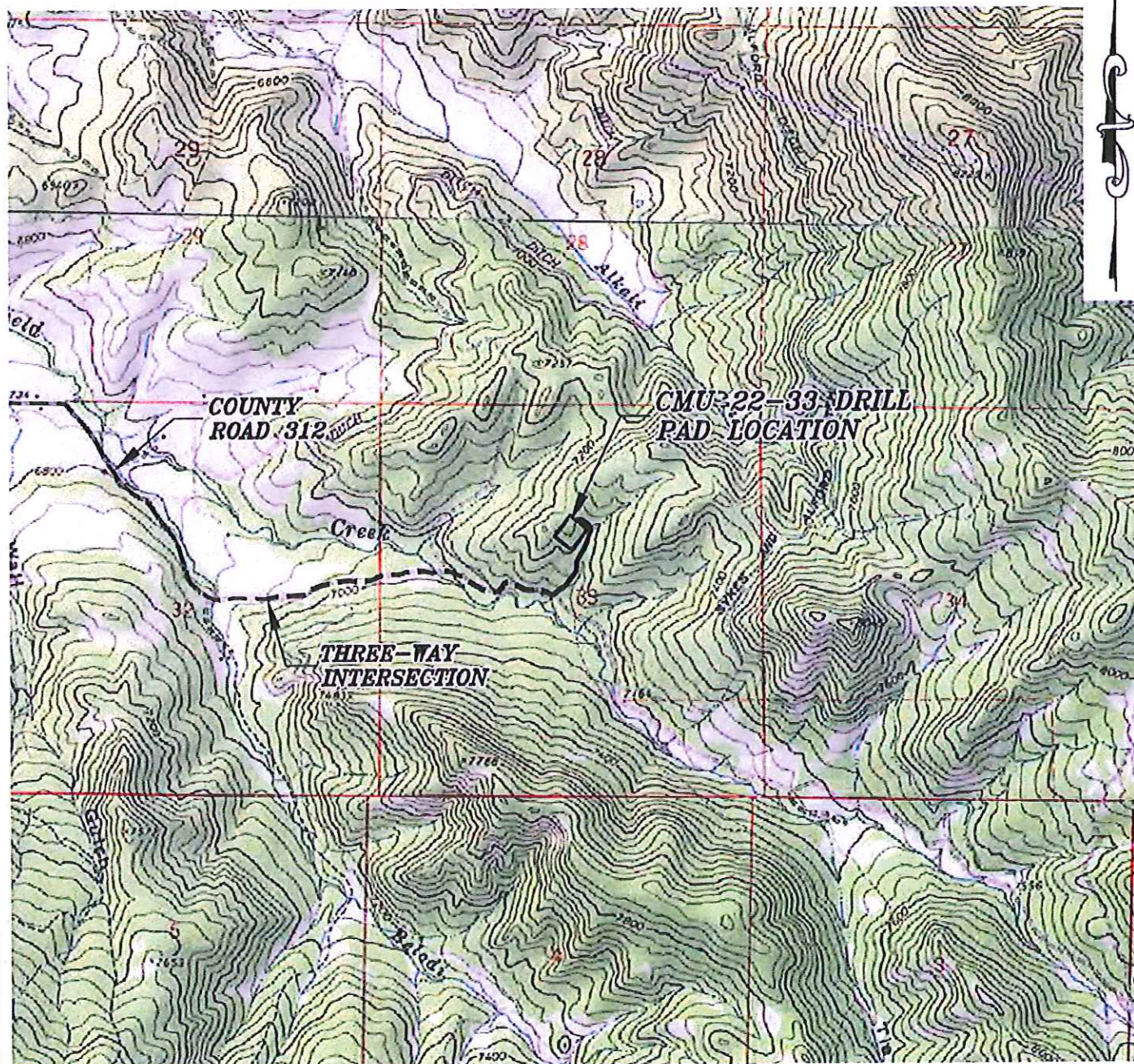


Section 33
T. 6 S., R 90 W.



ACCESS DESCRIPTION: (Garfield Creek Access)

FROM THE INTERSECTION OF COLORADO INTERSTATE 70 OVERPASS (Exit 97) AND RIVER FRONTAGE ROAD SOUTH OF THE TOWN OF SILT, COLORADO, PROCEED EAST ± 0.4 MILES ALONG RIVER FRONTAGE ROAD TO THE INTERSECTION WITH COUNTY ROAD 311 (DIVIDE CREEK ROAD), PROCEED RIGHT IN A SOUTHERLY TO EASTERLY DIRECTION ± 2.0 MILES TO A 'Y' INTERSECTION WITH COUNTY ROAD 335, PROCEED LEFT IN AN EASTERLY DIRECTION ALONG COUNTY ROAD 335 (Colorado River Road) ± 3.8 MILES TO THE INTERSECTION COUNTY ROAD 312 (GARFIELD CREEK ROAD), PROCEED RIGHT IN A SOUTHERLY DIRECTION ± 8.0 MILES ALONG COUNTY ROAD 312, TO A THREE WAY INTERSECTION, PROCEED STRAIGHT IN AN EASTERLY DIRECTION ± 0.8 MILES TO AN INTERSECTION WITH A DIRT/GRAVEL ROAD, PROCEED LEFT IN A NORTHERLY DIRECTION ± 0.3 MILES TO THE CMU 22-33 DRILL PAD LOCATION, AS SHOWN HEREON.

Construction Plan Prepared for:
WPX ENERGY

WPX Energy Rocky Mountain, LLC

CMU 22-33 Drill Pad - Plat 5
ACCESS ROAD & TOPO MAP

136 East Third Street
Rifle, Colorado 81650
Ph. (970) 625-2720
Fax (970) 625-2773



BOOKCLIFF
Survey Services, Inc.

SCALE: 1" = 2000'
DATE: 2/29/13
PLAT: 5 of 7
PROJECT: Kokopelli
DFT: cws