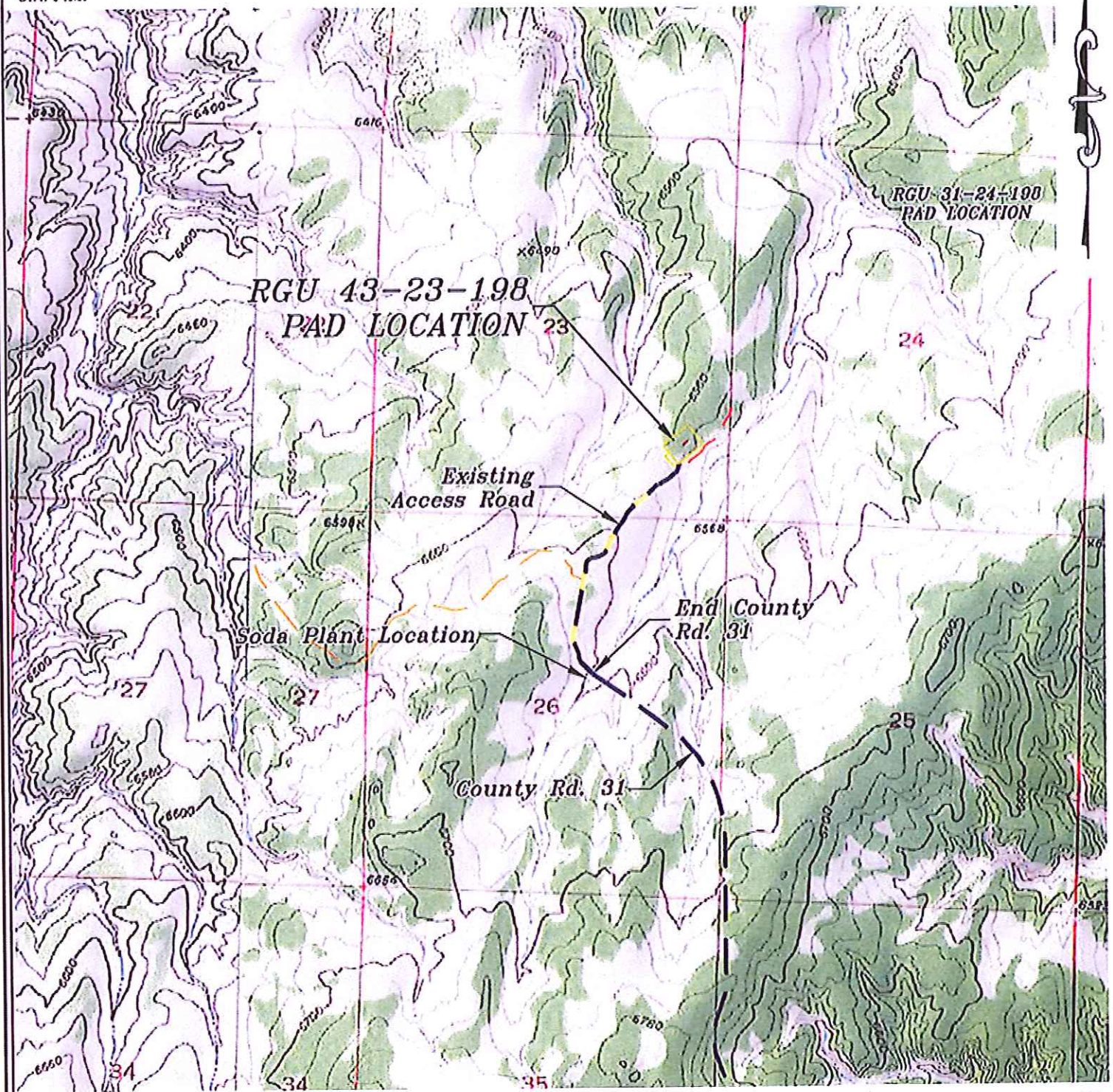


Section 23
T. 1 S., R 98 W
6th. P.M.



ACCESS DESCRIPTION:

FROM THE INTERSECTION OF STATE HIGHWAY 64 AND RIO BLANCO COUNTY ROAD 5 PROCEED SOUTHERLY ALONG COUNTY ROAD 5 ± 14.5 MILES TO THE INTERSECTION WITH COUNTY ROAD 24 (Mile Marker 26.8), PROCEED WESTERLY ALONG COUNTY ROAD 24 ± 1.8 MILES TO THE INTERSECTION WITH COUNTY ROAD 31, PROCEED RIGHT IN A NORTHERLY DIRECTION ± 3.2 MILES TO THE AMERICAN SODA PLANT, PROCEED RIGHT IN A NORTHERLY DIRECTION ± 0.7 ON A DIRT/ GRAVEL ROAD TO AN INTERSECTION WITH A DIRT/GRAVEL ROAD, PROCEED LEFT IN A NORTHWESTERLY DIRECTION TO THE RGU 43-23-198 DRILL PAD LOCATION, AS SHOWN HEREON.

REVISED: 4/15/13

SCALE: 1" = 2000'
DATE: 3/12/13
PLAT: 5 of 7
PROJECT: WPX Highlands
DFT: CWS

Construction Plan Prepared for:
WPX ENERGY
WPX Energy Rocky Mountain, LLC

RGU 43-23-198 Drill Pad - Plat 5
ACCESS MAP

136 East Third Street
Rifle, Colorado 81650
Ph. (970) 625-2720
Fax: (970) 625-2773



BOOKCLIFF
Survey Services, Inc.