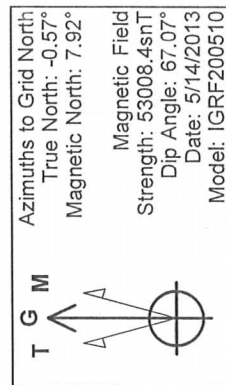
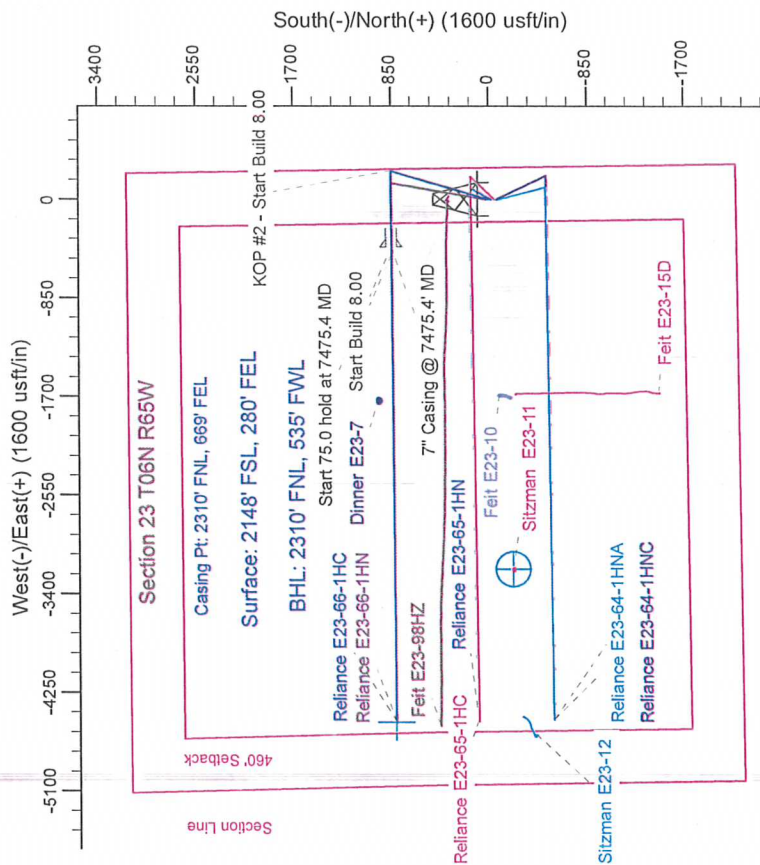
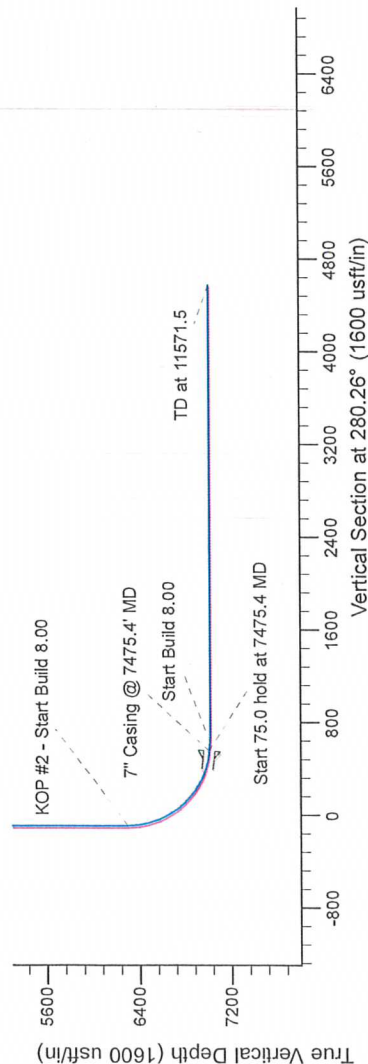
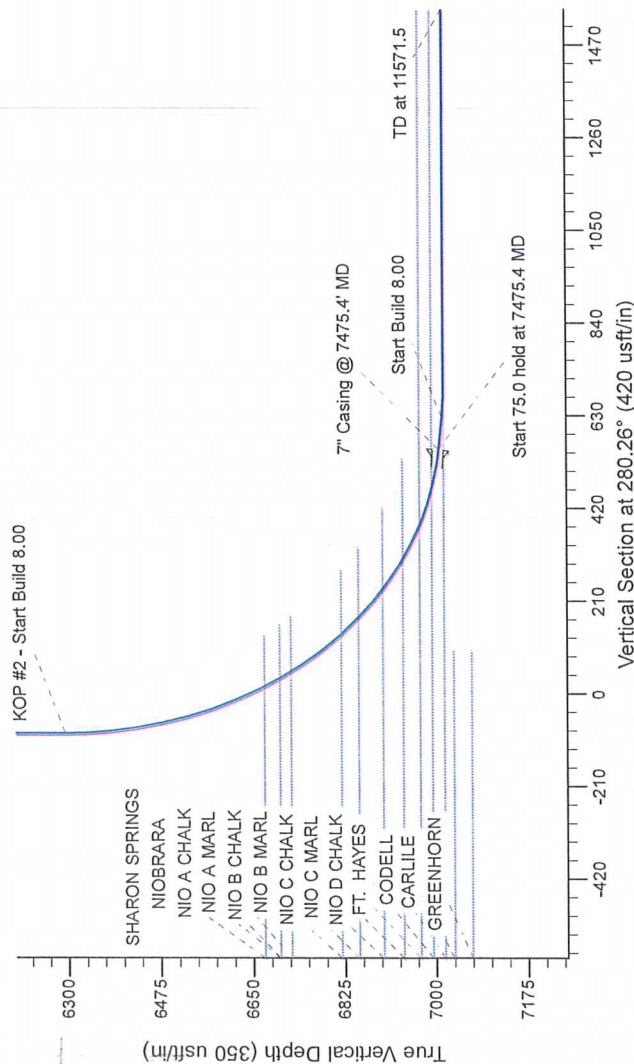


Project: Wattenberg Field
Site: E (Sec.23-T06N-R65W) Weld County, CO
Well: Reliance E23-66-1HC
Wellbore: Original Drilling
Design: APD - Rev 0

Geodetic System: US State Plane 1983
Datum: North American Datum 1983
Ellipsoid: GRS 1980
Zone: Colorado Northern Zone
System Datum: Mean Sea Level

Sec	MD	Inc	Azi	TVD	+N/Ls	+E/W	Dleg	TFace	VSect	Target
1	1200.0	0.00	0.00	0.0	0.0	0.0	0.00	0.00	0.0	
2	2039.9	0.00	0.00	1200.0	0.0	0.0	0.00	0.00	0.0	
3	2039.9	17.00	16.08	2037.5	120.2	34.7	2.00	18.08	-12.7	
4	4216.7	17.00	16.08	4112.5	729.8	210.3	2.00	0.00	-76.9	
5	5086.6	0.00	0.00	4950.0	850.0	245.0	2.00	180.00	-89.6	
6	6412.9	0.00	0.00	6293.3	850.0	245.0	0.00	0.00	-89.6	
7	7475.4	85.00	269.59	7006.7	845.3	-408.8	8.00	269.59	552.8	
8	7550.4	85.00	269.59	7013.3	844.7	-483.5	8.00	0.00	626.2	
9	7612.9	90.00	269.59	7016.0	844.3	-545.9	8.00	0.00	687.6	
10	11571.5	90.00	269.59	7016.0	815.6	-4504.4	0.00	0.00	4577.6	Reliance E23-66-1HC BHL 2310FNL 535FWL



WELL DETAILS: Reliance E23-66-1HC			
0.0	0.0	1415307.55	3244316.98
	Northing	Ground Level: 4695.0	
		Easting	Latitude
			Longitude
			-104.621850
		40.470100	
Plan: APD - Rev 0 (Reliance E23-66-1HC/Original Drilling)			
Created By: Shalley Jewell		Date: 15:10, May 14 2013	
Checked: _____		Date: _____	
Reviewed: _____		Date: _____	
Approved: _____		Date: _____	