

Project: Wattenberg Field  
Site: E (Sec.23-T06N-R65W) Weld County, CO  
Well: Reliance E23-65-1HC  
Wellbore: Original Drilling  
Design: APD - Rev 0

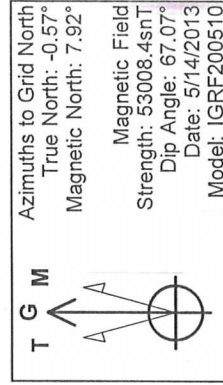
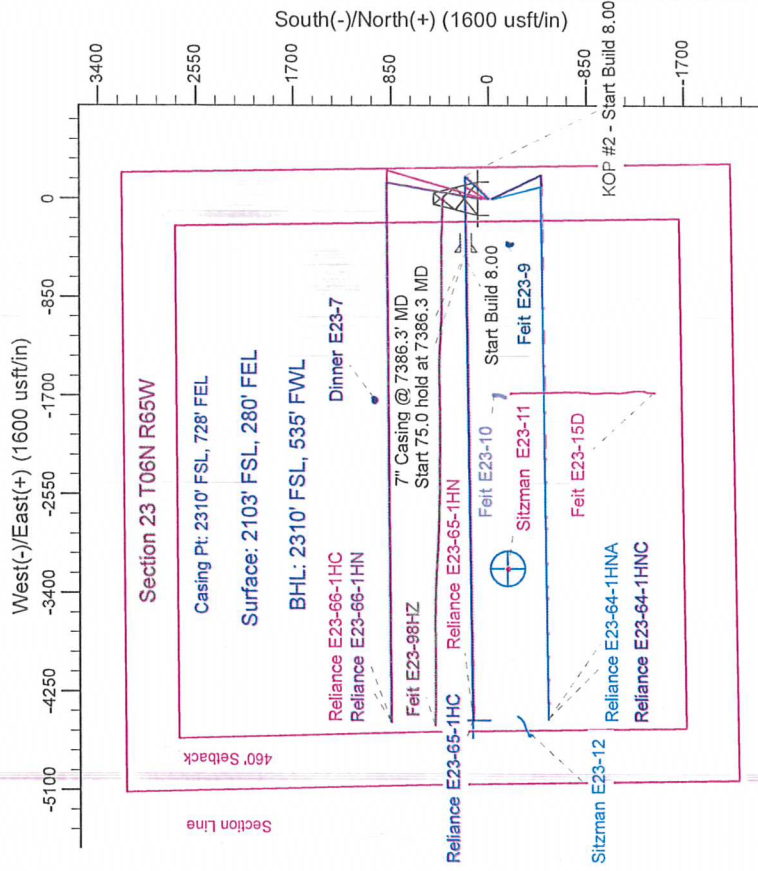
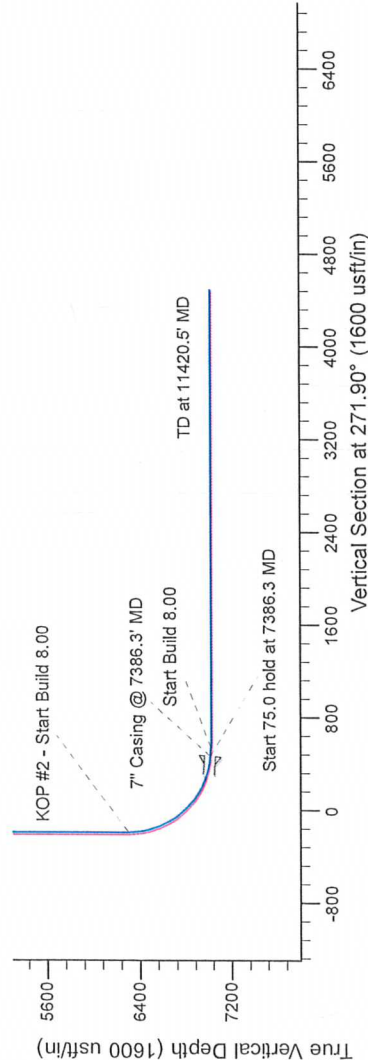
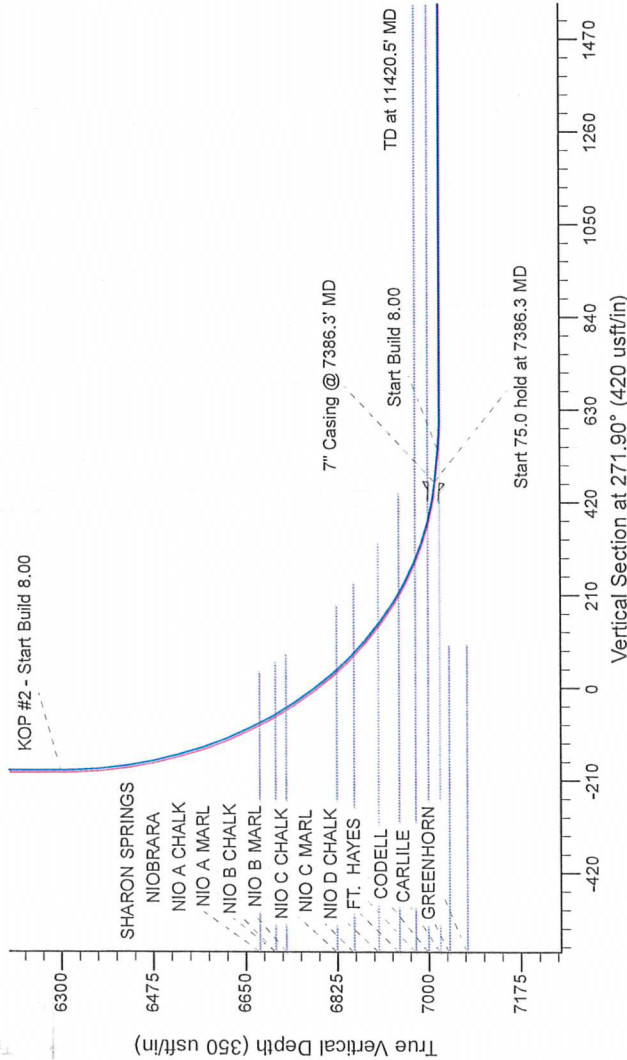
# Northern Region Drilling

Geodetic System: US State Plane 1983  
Datum: North American Datum 1983  
Ellipsoid: GRS 1980  
Zone: Colorado Northern Zone  
System Datum: Mean Sea Level

## SECTION DETAILS

Sec	MD	Inc	Azi	TVD	+N-S	+E-W	Dleg	TFace	VSecl	Target
1	0.0	0.00	0.00	0.0	0.0	0.0	0.00	0.00	0.0	
2	1800.0	0.00	0.00	1800.0	0.0	0.0	0.00	0.00	0.0	
3	2400.1	12.00	43.29	2395.7	45.6	42.9	2.00	43.29	-41.4	
4	3165.4	12.00	43.29	3144.3	161.4	152.1	0.00	180.00	-146.6	
5	3765.5	0.00	0.00	3740.0	207.0	195.0	2.00	180.00	-188.0	
6	6323.8	0.00	0.00	6298.3	207.0	195.0	0.00	269.29	465.1	
7	7386.3	85.00	289.29	7011.7	198.9	458.7	8.00	269.29	539.7	
8	7461.3	85.00	289.29	7018.3	198.9	458.7	8.00	269.29	539.7	
9	7523.8	90.00	289.29	7021.0	197.2	456.9	8.00	269.29	539.7	
10	11420.5	90.00	289.29	7021.0	149.0	-4492.3	0.00	0.00	4494.8	

Reliance E23-65-1HC BHL 2310' FSL, 535FWL



## WELL DETAILS: Reliance E23-65-1HC

North	East	Ground Level	Longitude
0.0	1415263.84	4695.0	-104.621850
0.0	3244317.41	40.469980	

Plan: APD - Rev 0 (Reliance E23-65-1HC/Original Drilling)

Created By: Shalley Jewell Date: 14/49, May 14 2013

Checked: Date: \_\_\_\_\_

Reviewed: Date: \_\_\_\_\_

Approved: Date: \_\_\_\_\_