

Project: Wattenberg Field
Site: E (Sec. 23-T06N-R65W) Weld County, CO
Well: Reliance E23-66-1HN
Design: APD - Rev 0

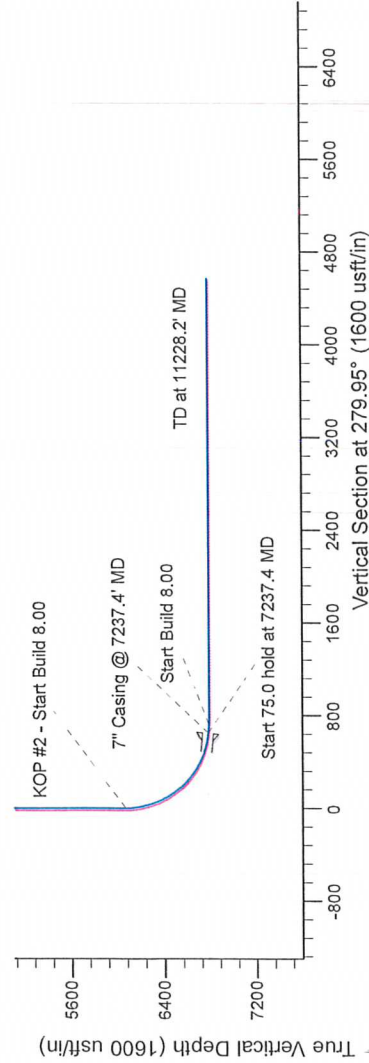
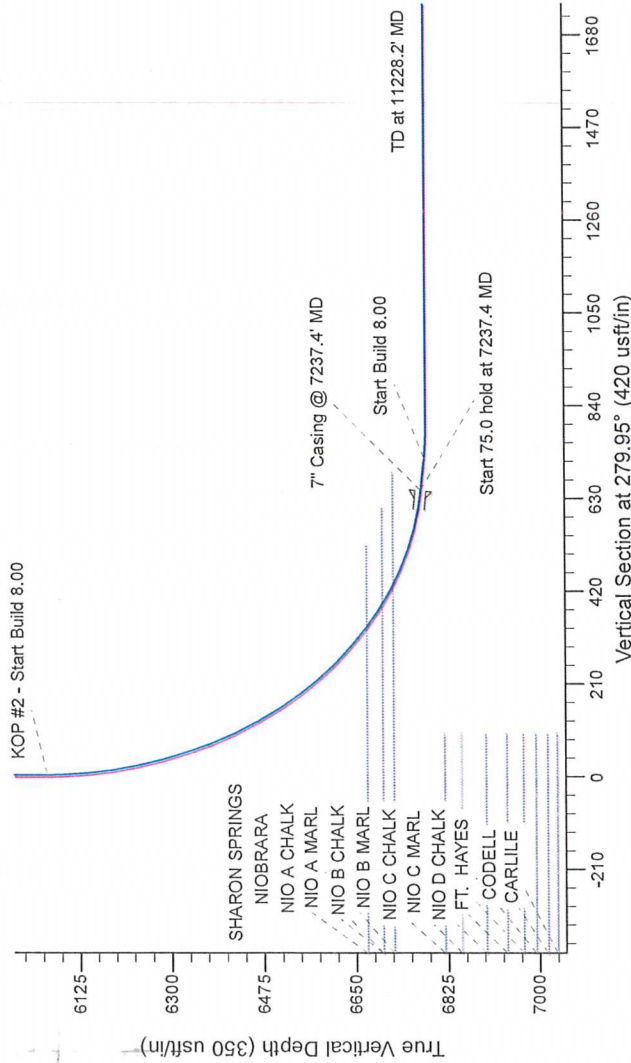
Northern Region Drilling

Geodetic System: US State Plane 1983
Datum: North American Datum 1983
Ellipsoid: GRS 1980
Zone: Colorado Northern Zone
System Datum: Mean Sea Level

SECTION DETAILS

Sec	MD	Inc	Azi	TVD	+NLS	+EWS	Dleg	TFace	Vsect	Target
1	1000.0	0.00	0.00	0.0	0.0	0.0	0.00	0.00	0.0	0.0
2	1850.4	17.03	9.63	1000.0	0.0	0.0	0.00	0.00	0.0	0.0
3	3851.2	17.03	9.63	1838.9	123.8	21.0	0.00	9.63	0.7	0.7
4	4702.6	0.00	0.00	3751.1	701.2	119.0	0.00	0.00	4.0	4.0
5	4702.6	0.00	0.00	4590.0	825.0	140.0	0.00	180.00	4.7	4.7
6	6174.9	0.00	0.00	6062.3	825.0	140.0	0.00	0.00	4.7	4.7
7	7237.4	85.00	269.57	6775.7	820.1	-513.8	8.00	269.57	647.7	647.7
8	7312.4	85.00	269.57	6782.3	819.5	-588.5	8.00	721.2	721.2	721.2
9	7374.9	90.00	269.57	6785.0	819.1	-650.9	8.00	0.00	762.6	762.6
10	11228.2	90.00	269.57	6785.0	790.1	-4504.1	0.00	0.00	4572.9	4572.9

Reliance E23-66-1HN BHL 2310'FNL, 535'FWL



T G M

Azimuths to Grid North
True North: -0.57°
Magnetic North: 7.92°

Magnetic Field
Strength: 53008.5nT
Dip Angle: 67.07°
Date: 5/14/2013
Model: IGRF200510

WELL DETAILS: Reliance E23-66-1HN

Wellbore: APD - Rev 0

North	East	Ground Level	Longitude
0.0	0.0	1415333.05	3244316.73
0.0	0.0	40.470170	-104.621850

Plan: APD - Rev 0 (Reliance E23-66-1HN Original Drilling)

Created By: Shalley Jewell Date: 15/20, May 14 2013

Checked: Date: _____

Reviewed: Date: _____

Approved: Date: _____