

The Road to Excellence Starts with Safety

Sold To #: 300721	Ship To #: 2978532	Quote #:	Sales Order #: 900190455
Customer: WPX ENERGY ROCKY MOUNTAIN LLC-EBUS	Customer Rep: Hartl, Al		
Well Name: RWF	Well #: 322-36	API/UWI #:	
Field: RULISON	City (SAP): RIFLE	County/Parish: Garfield	State: Colorado
Lat: N 39.482 deg. OR N 39 deg. 28 min. 56.518 secs.	Long: W 107.837 deg. OR W -108 deg. 9 min. 48.107 secs.		
Contractor: NABORS 576	Rig/Platform Name/Num: NABORS 576		
Job Purpose: Cement Surface Casing			
Well Type: Development Well	Job Type: Cement Surface Casing		
Sales Person: MAYO, MARK	Srvc Supervisor: DEUSSEN, EDWARD	MBU ID Emp #: 485182	

Job Personnel

HES Emp Name	Exp Hrs	Emp #	HES Emp Name	Exp Hrs	Emp #	HES Emp Name	Exp Hrs	Emp #
BANKS, BRENT A	8.5	371353	DEUSSEN, EDWARD Eric	8.5	485182	SIMINEO, JEROD M	8.5	479954

Equipment

HES Unit #	Distance-1 way	HES Unit #	Distance-1 way	HES Unit #	Distance-1 way	HES Unit #	Distance-1 way
10297346	60 mile	10616651C	60 mile	11071559	60 mile	11259886	60 mile
11808827	60 mile						

Job Hours

Date	On Location Hours	Operating Hours	Date	On Location Hours	Operating Hours	Date	On Location Hours	Operating Hours
2-25-2013	8.5	4.5						
TOTAL			Total is the sum of each column separately					

Job

Job Times

Formation Name	Formation Depth (MD)	Top	Bottom	Called Out	Date	Time	Time Zone
Form Type			BHST	On Location	25 - Feb - 2013	04:30	MST
Job depth MD	1156. ft		Job Depth TVD	Job Started	25 - Feb - 2013	09:54	MST
Water Depth			Wk Ht Above Floor	Job Completed	25 - Feb - 2013	10:56	MST
Perforation Depth (MD)	From		To	Departed Loc	25 - Feb - 2013	13:00	MST

Well Data

Description	New / Used	Max pressure psig	Size in	ID in	Weight lbm/ft	Thread	Grade	Top MD ft	Bottom MD ft	Top TVD ft	Bottom TVD ft
OPEN HOLE				13.5				.	1170.		
SURFACE CASING	Unknown		9.625	9.001	32.3		H-40	.	1156.		

Sales/Rental/3rd Party (HES)

Description	Qty	Qty uom	Depth	Supplier
PLUG,CMTG,TOP,9 5/8,HWE,8.16 MIN/9.06 MA	1	EA		

Tools and Accessories

Type	Size	Qty	Make	Depth	Type	Size	Qty	Make	Depth	Type	Size	Qty	Make
Guide Shoe					Packer					Top Plug	9 5/8	1	HES
Float Shoe					Bridge Plug					Bottom Plug			
Float Collar					Retainer					SSR plug set			
Insert Float										Plug Container	9 5/8	1	HES
Stage Tool										Centralizers			

Miscellaneous Materials

Gelling Agt	Conc	Surfactant	Conc	Acid Type	Qty	Conc	%
Treatment Fld	Conc	Inhibitor	Conc	Sand Type	Size	Qty	

Fluid Data

Stage/Plug #: 1	Fluid #	Stage Type	Fluid Name	Qty	Qty uom	Mixing Density lbm/gal	Yield ft ³ /sk	Mix Fluid Gal/sk	Rate bbl/min	Total Mix Fluid Gal/sk
-----------------	---------	------------	------------	-----	---------	------------------------	---------------------------	------------------	--------------	------------------------

HALLIBURTON***Cementing Job Summary***

1	Water Spacer	FRESH WATER	20.00	bbl	.	.0	.0	4.0	
2	Lead Cement	VERSACEM (TM) SYSTEM (452010)	160.0	sacks	12.3	2.38	13.75	8.0	13.75
	13.75 Gal	FRESH WATER							
3	Tail Cement	VERSACEM (TM) SYSTEM (452010)	160.0	sacks	12.8	2.11	11.75	8.0	11.75
4	Displacement	FRESH WATER	88.00	bbl	.	.0	.0	10.0	
Calculated Values		Pressures		Volumes					
Displacement	87.8	Shut In: Instant		Lost Returns		Cement Slurry	127.9	Pad	
Top Of Cement	SURFACE	5 Min		Cement Returns	23	Actual Displacement	87.8	Treatment	
Frac Gradient		15 Min		Spacers	20	Load and Breakdown		Total Job	235.7
Rates									
Circulating		Mixing	8	Displacement	10	Avg. Job		8	
Cement Left In Pipe	Amount	41 ft	Reason	Shoe Joint					
Frac Ring # 1 @	ID	Frac ring # 2 @	ID	Frac Ring # 3 @	ID	Frac Ring # 4 @	ID		
The Information Stated Herein Is Correct				Customer Representative Signature					

The Road to Excellence Starts with Safety

Sold To #: 300721	Ship To #: 2978532	Quote #:	Sales Order #: 900190455
Customer: WPX ENERGY ROCKY MOUNTAIN LLC-EBUS	Customer Rep: Hartl, Al		
Well Name: RWF	Well #: 322-36	API/UWI #:	
Field: RULISON	City (SAP): RIFLE	County/Parish: Garfield	State: Colorado
Legal Description:			
Lat: N 39.482 deg. OR N 39 deg. 28 min. 56.518 secs.		Long: W 107.837 deg. OR W -108 deg. 9 min. 48.107 secs.	
Contractor: NABORS 576	Rig/Platform Name/Num: NABORS 576		
Job Purpose: Cement Surface Casing			Ticket Amount:
Well Type: Development Well	Job Type: Cement Surface Casing		
Sales Person: MAYO, MARK	Srv Supervisor: DEUSSEN, EDWARD	MBU ID Emp #: 485182	

Activity Description	Date/Time	Cht #	Rate bbl/min	Volume bbl		Pressure psig		Comments
				Stage	Total	Tubing	Casing	
Call Out	02/25/2013 00:30							
Pre-Convoy Safety Meeting	02/25/2013 03:00							ALL HES PERSONNEL
Crew Leave Yard	02/25/2013 03:15							1 ELITE, 1 660, 1 PICKUP
Arrive At Loc	02/25/2013 04:30							RIG STILL PULLING DRILL PIPE
Assessment Of Location Safety Meeting	02/25/2013 04:45							
Pre-Rig Up Safety Meeting	02/25/2013 07:15							ALL HES PERSONNEL
Rig-Up Equipment	02/25/2013 07:30							1 HARD LINE TO FLOOR, 2 WATER LINES TO UPRIGHT AND DAY TANK, BULK HOSES TO SILO AND 660
Pre-Job Safety Meeting	02/25/2013 09:30							ALL HES PERSONNEL AND RIG CREW
Start Job	02/25/2013 09:54							TD 1170', TP 1156', SJ 41', MW 10.2, OH 13 1/2", CSG 9 5/8", 32.3# H-40, PV = 29, YP = 17
Pump Water	02/25/2013 09:55		2	2			76.0	FILL LINES
Pressure Test	02/25/2013 10:04							PRESSURED UP TO 3144 PSI - PRESSURE HELD WELL
Pump Spacer 1	02/25/2013 10:07		20	4			115.0	FRESH WATER SPACER
Pump Lead Cement	02/25/2013 10:16		67.8	8			328.0	160 SKS, 12.3 PPG, 2.38 YIELD, 13.75 GAL/SK
Activity Description	Date/Time	Cht	Rate bbl/min	Volume bbl		Pressure psig		Comments

Sold To #: 300721

Ship To #: 2978532

Quote #:

Sales Order #: 900190455

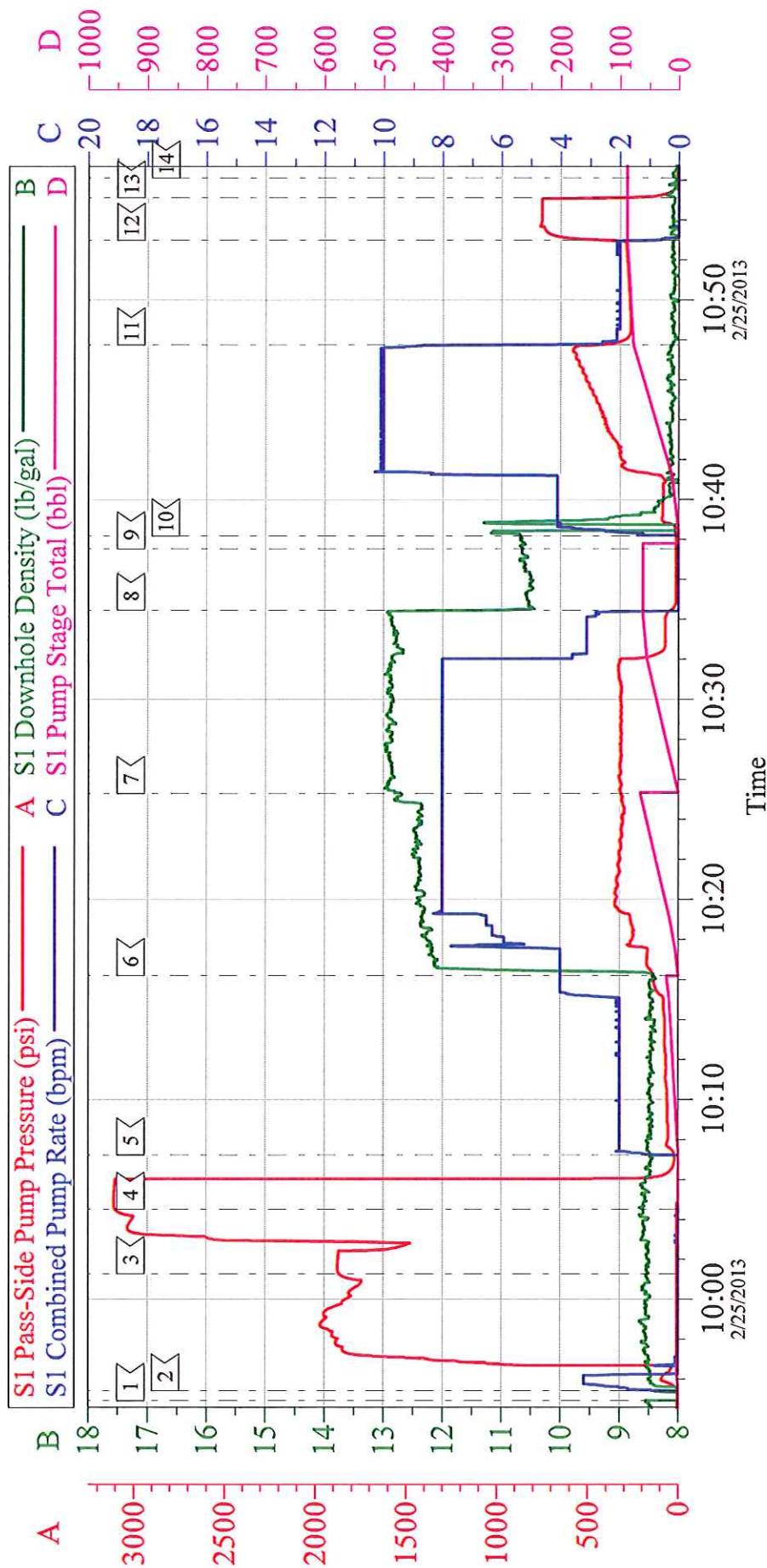
SUMMIT Version: 7.3.0078

Thursday, February 28, 2013 12:14:00

		#		Stage	Total	Tubing	Casing	
Pump Tail Cement	02/25/2013 10:25		60.1	8			312.0	160 SKS, 12.8 PPG, 2.11 YIELD, 11.75 GAL/SK
Shutdown	02/25/2013 10:34							
Drop Top Plug	02/25/2013 10:37							
Pump Displacement	02/25/2013 10:38		10	87.8			557.0	FRESH WATER
Slow Rate	02/25/2013 10:47		2	10			270.0	
Bump Plug	02/25/2013 10:53						281.0	PRESSURED UP TO 755 PSI
Check Floats	02/25/2013 10:55							FLOATS HELD - GOT 1 BBL BACK
End Job	02/25/2013 10:56							GOT 23 BBLs CEMENT TO SURFACE / USED 40 LBS SUGAR / NO ADD HOURS OR DERRICK CHARGE
Post-Job Safety Meeting (Pre Rig-Down)	02/25/2013 11:15							ALL HES PERSONNEL
Rig-Down Equipment	02/25/2013 11:30							
Pre-Convoy Safety Meeting	02/25/2013 12:45							ALL HES PERSONNEL
Crew Leave Location	02/25/2013 13:00							THANK YOU FOR USING HALLIBURTON AND ED DEUSSEN AND CREW

WPX - RWF 322-36

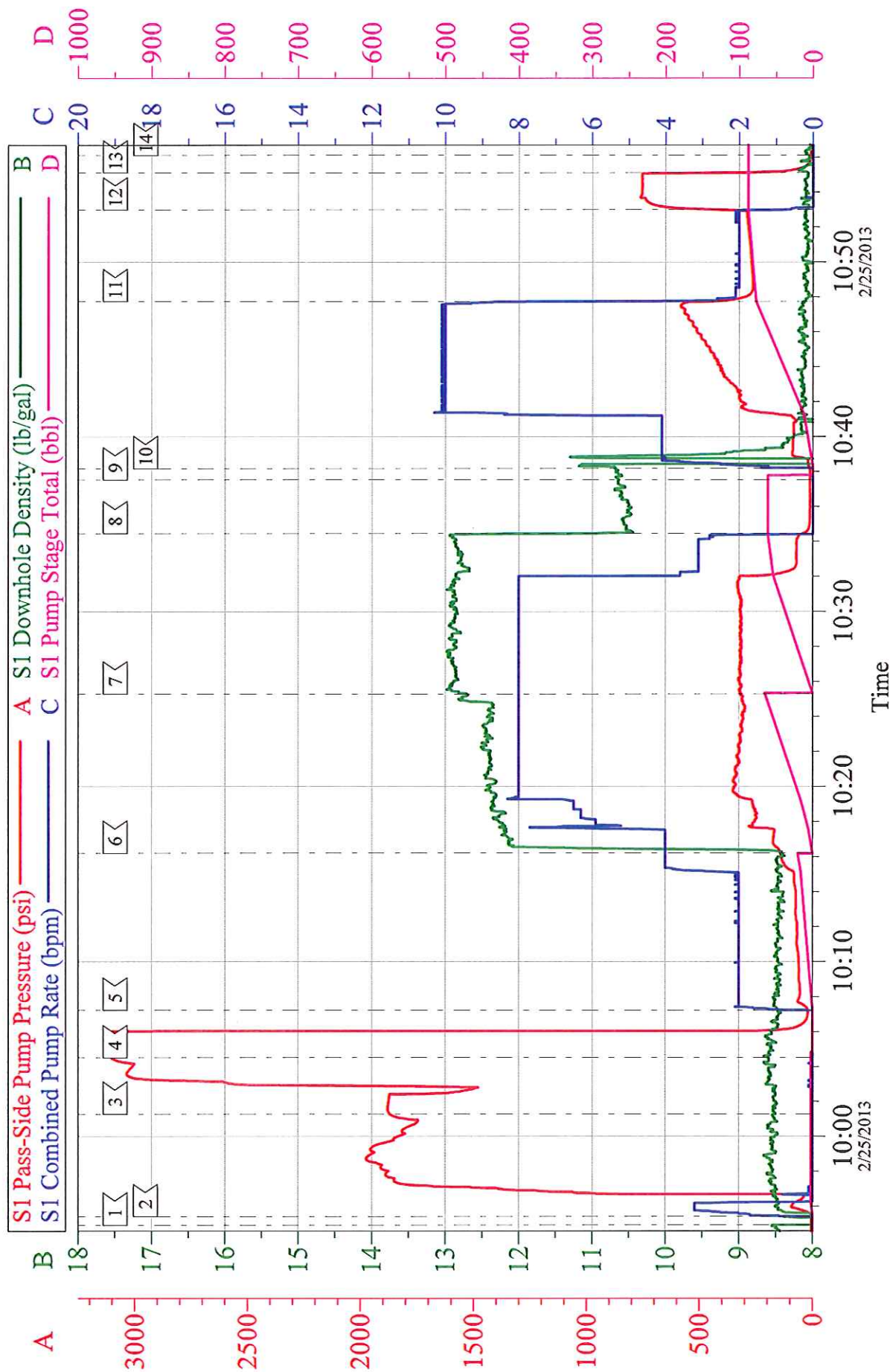
9 5/8 SURFACE



Customer: WPX	Job Date: 25-Feb-2013	Sales Order #: 900190455
Well Description: RF 322-36	Job Type: SURFACE	ADC Used: YES
Company Rep: RICK OAKS	Cement Supervisor: ED DEUSSEN	Elite #: BRENT BANKS

WPX - RWF 322-36

9 5/8 SURFACE



Customer: WPX	Job Date: 25-Feb-2013	Sales Order #: 900190455
Well Description: RF 322-36	Job Type: SURFACE	ADC Used: YES
Company Rep: RICK OAKS	Cement Supervisor: ED DEUSSEN	Elite #: BRENT BANKS