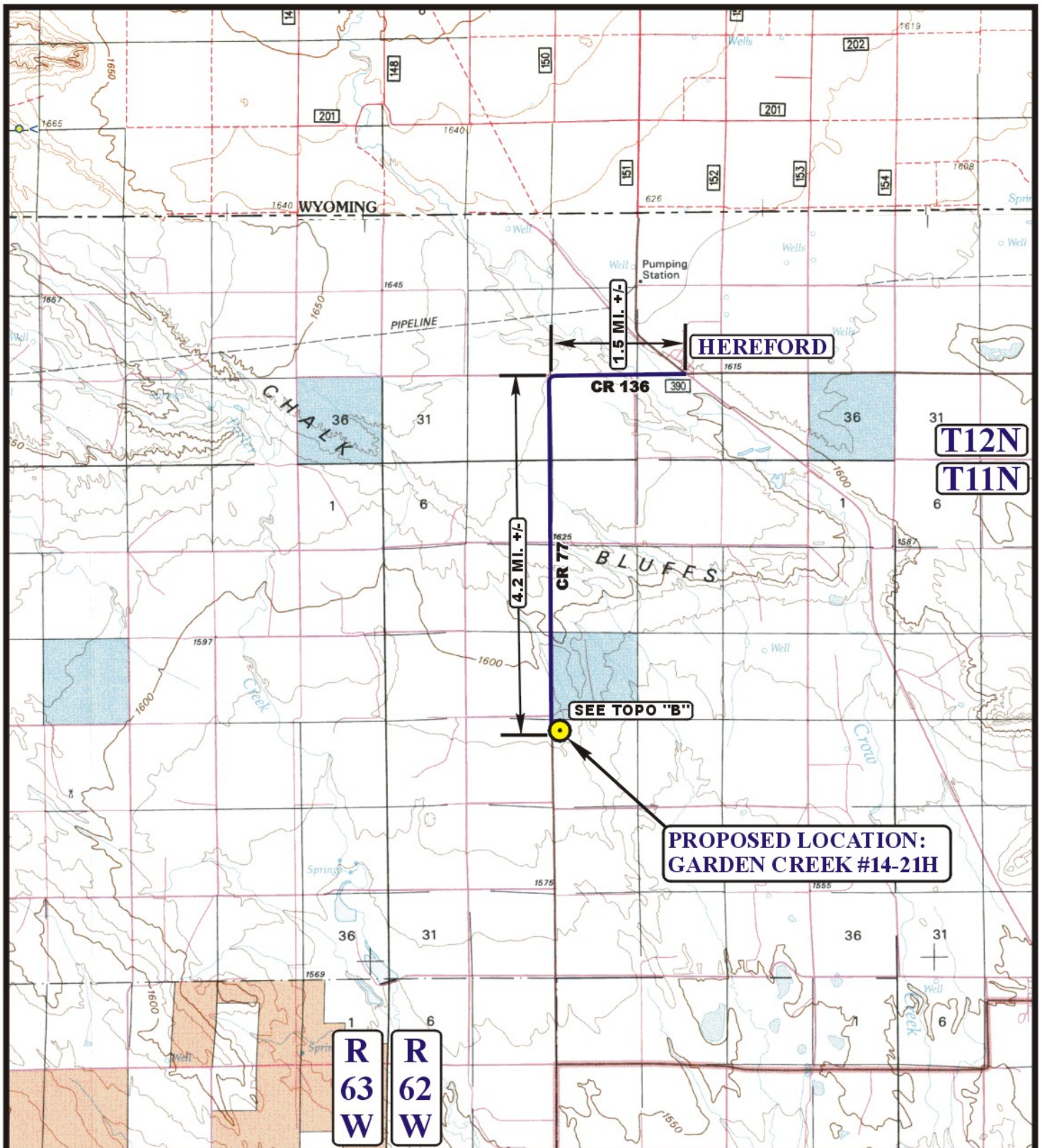


EOG RESOURCES, INC.  
GARDEN CREEK #14-21H  
SECTION 21, T11N, R62W, 6th P.M.

PROCEED IN A WESTERLY DIRECTION FROM HEREFORD, COLORADO ON COUNTY ROAD 136 APPROXIMATELY 1.5 MILES TO THE JUNCTION OF COUNTY ROAD 136 AND COUNTY ROAD 77 TO THE SOUTH; TURN LEFT AND PROCEED IN A SOUTHERLY DIRECTION APPROXIMATELY 4.2 MILES TO THE BEGINNING OF THE PROPOSED ACCESS ROAD TO THE EAST; FOLLOW ROAD FLAGS IN AN EASTERLY DIRECTION APPROXIMATELY 607' TO THE PROPOSED LOCATION.

TOTAL DISTANCE FROM HEREFORD, COLORADO TO THE PROPOSED LOCATION IS APPROXIMATELY 5.8 MILES.



# LEGEND:

● PROPOSED LOCATION

## EOG RESOURCES, INC.

GARDEN CREEK #14-21H  
SECTION 21, T11N, R62W, 6th P.M.  
895' FNL 502' FWL



Uintah Engineering & Land Surveying  
85 South 200 East Vernal, Utah 84078  
(435) 789-1017 \* FAX (435) 789-1813



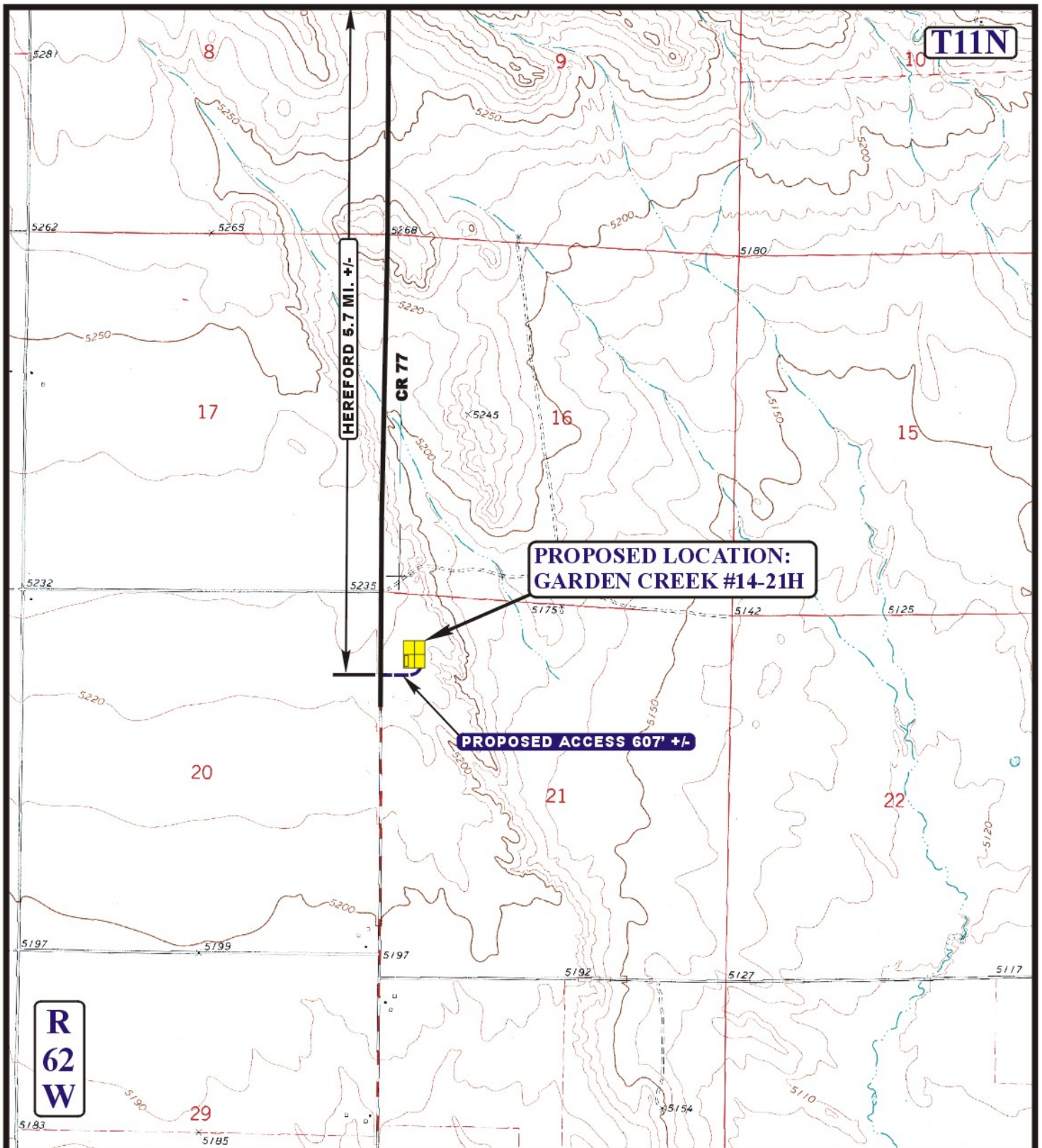
ACCESS ROAD  
MAP

09 20 10  
MONTH DAY YEAR

SCALE: 1:100,000 DRAWN BY: Z.L. REVISED: 00-00-00

A  
TOPO





# **LEGEND:**

 EXISTING ROAD  
 PROPOSED ACCESS ROAD



**EOG RESOURCES, INC.**

**GARDEN CREEK #14-21H**  
**SECTION 21, T11N, R62W, 6th P.M.**  
**895' FNL 502' FWL**



Uintah Engineering & Land Surveying  
 85 South 200 East Vernal, Utah 84078  
 (435) 789-1017 \* FAX (435) 789-1813

**ACCESS ROAD**  
**MAP**

**09** **20** **10**  
 MONTH DAY YEAR

SCALE: 1" = 2000' DRAWN BY: Z.L. REVISED: 00-00-00

**B**  
 TOPO