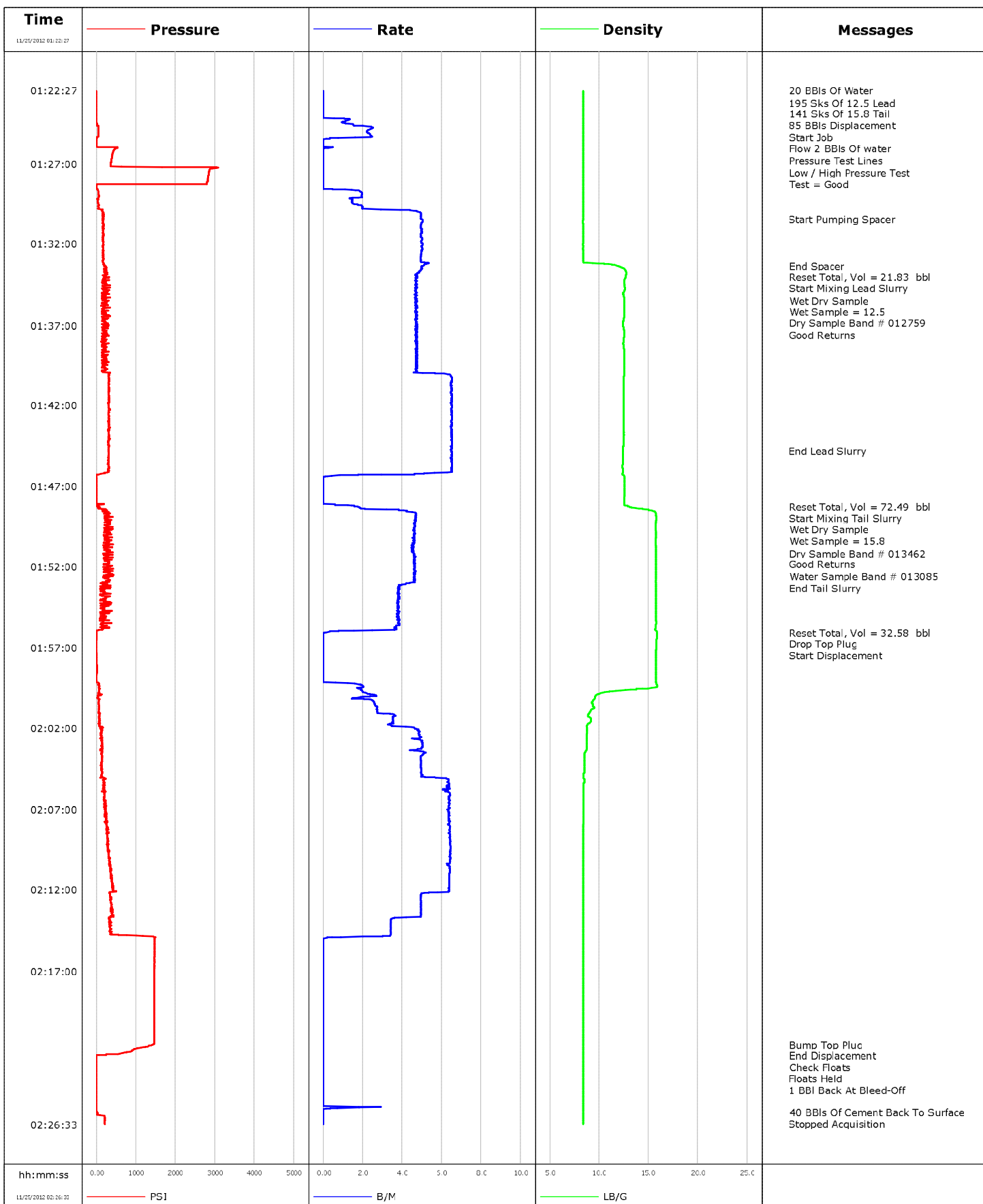


Well	Shideler Fee 6-3A	Client	Encana
Field	Mamm Creek	SIR No.	CE6H-00011
Engineer	ROGERS / FAIRBROOK	Job Type	9 5/8 Surface
Country	United States	Job Date	11-24-2012





Cementing Service Report

				Customer Encana		Job Number CE6H-00011	
Well Shideler Fee 6-3A			Location (legal) O31E		Schlumberger Location Grand Junction, CO.		Job Start Nov/24/2012
Field Mamm Creek		Formation Name/Type		Deviation	Bit Size	Well MD	Well TVD
County Garfield		State/Province Colorado		BHP	BHST	BHCT	Pore Press. Gradient
Well Master		API/UWI 05045217410000					
Rig Name Patterson 303		Drilled For Gas	Service Via Land	Casing/Liner			
				Depth,	Size,	Weight,	Grade
Offshore Zone		Well Class New	Well Type Development				
Drilling Fluid Type		Max. Density	Plastic Viscosity	Tubing/Drill Pipe			
				Depth,	Size,	Weight,	Grade
Service Line Cementing		Job Type 9 5/8 Surface					
Max. Allowed Tub. Press		Max. Allowed Ann. Press	WH Connection	Perforations/Open Hole			
				Top,	Bottom,	No. of Shots	Total Interval
				Treat Down	Displacement	Packer Type	Packer Depth
				Tubing Vol.	Casing Vol.	Annular Vol.	Openhole Vol.
Casing/Tubing Secured <input checked="" type="checkbox"/>		1 Hole Vol. Circulated prior to Cement <input checked="" type="checkbox"/>		Casing Tools		Squeeze Job	
Lift Pressure				Shoe Type Float		Squeeze Type	
Pipe Rotated <input type="checkbox"/>		Pipe Reciprocated <input type="checkbox"/>		Shoe Depth 10.0 ft		Tool Type	
No. Centralizers		Top Plugs	Bottom Plugs	Stage Tool Type		Tool Depth	
Cement Head Type				Stage Tool Depth		Tail Pipe Size	
Job Scheduled For Nov/24/2012		Arrived on Location Nov/24/2012	Leave Location Nov/24/2012	Collar Type Float		Tail Pipe Depth	
				Collar Depth		Sqz. Total Vol.	
Date	Time 24-hr clock	Treating Pressure PSI	Flow Rate B/M	Density LB/G	Volume BBL	Message	
11/25/2012	00:04:18					Started Acquisition	
11/25/2012	01:22:27	-7	0.0	8.41	0.0		
11/25/2012	01:22:28					20 BBLs Of Water	
11/25/2012	01:22:28	-7	0.0	8.41	0.0		
11/25/2012	01:22:29					195 Sks Of 12.5 Lead	
11/25/2012	01:22:29	-7	0.0	8.41	0.0		
11/25/2012	01:22:30					141 Sks Of 15.8 Tail	
11/25/2012	01:22:30					85 BBLs Displacement	
11/25/2012	01:22:30	-7	0.0	8.41	0.0		
11/25/2012	01:22:37					Start Job	
11/25/2012	01:22:37	-7	0.0	8.41	0.0		
11/25/2012	01:22:38					Flow 2 BBLs Of water	
11/25/2012	01:22:38	-7	0.0	8.41	0.0		
11/25/2012	01:22:42					Pressure Test Lines	
11/25/2012	01:22:42	-7	0.0	8.41	0.0		
11/25/2012	01:22:44					Low / High Pressure Test	
11/25/2012	01:22:44	-7	0.0	8.41	0.0		
11/25/2012	01:22:45					Test = Good	
11/25/2012	01:22:45	-7	0.0	8.41	0.0		
11/25/2012	01:24:18	-5	1.3	8.41	0.2		
11/25/2012	01:29:18	30	1.4	8.40	3.6		

Well Shideler Fee 6-3A			Field Mamm Creek		Job Start Nov/24/2012	Customer Encana	Job Number CE6H-00011
Date	Time 24-hr clock	Treating Pressure PSI	Flow Rate B/M	Density LB/G	Volume BBL	Message	
11/25/2012	01:30:26	146	5.0	8.39	7.5		
11/25/2012	01:33:17					End Spacer	
11/25/2012	01:33:17	197	5.1	11.60	21.7		
11/25/2012	01:33:18					Reset Total, Vol = 21.83 bbl	
11/25/2012	01:33:18	198	5.1	11.80	21.8		
11/25/2012	01:34:18	236	4.7	12.51	26.7		
11/25/2012	01:34:27					Start Mixing Lead Slurry	
11/25/2012	01:34:27	233	4.7	12.55	27.4		
11/25/2012	01:34:31					Wet Dry Sample	
11/25/2012	01:34:31	223	4.7	12.57	27.7		
11/25/2012	01:34:33					Wet Sample = 12.5	
11/25/2012	01:34:33	352	4.7	12.57	27.8		
11/25/2012	01:34:34					Dry Sample Band # 012759	
11/25/2012	01:34:34	227	4.7	12.58	27.9		
11/25/2012	01:34:36					Good Returns	
11/25/2012	01:34:36	140	4.7	12.58	28.1		
11/25/2012	01:39:18	315	4.8	12.54	50.2		
11/25/2012	01:44:18	292	6.5	12.46	81.5		
11/25/2012	01:44:48					End Lead Slurry	
11/25/2012	01:44:48	295	6.5	12.44	84.7		
11/25/2012	01:48:14					Reset Total, Vol = 72.49 bbl	
11/25/2012	01:48:14	24	1.6	12.89	94.3		
11/25/2012	01:48:44					Start Mixing Tail Slurry	
11/25/2012	01:48:44	318	4.7	15.75	96.0		
11/25/2012	01:48:53					Wet Dry Sample	
11/25/2012	01:48:53	407	4.7	15.79	96.7		
11/25/2012	01:48:54					Wet Sample = 15.8	
11/25/2012	01:48:54	407	4.7	15.79	96.8		
11/25/2012	01:48:55					Dry Sample Band # 013462	
11/25/2012	01:48:55	321	4.7	15.80	96.9		
11/25/2012	01:48:58					Good Returns	
11/25/2012	01:48:58	280	4.7	15.80	97.1		
11/25/2012	01:49:18	285	4.7	15.73	98.7		
11/25/2012	01:50:20					Water Sample Band # 013085	
11/25/2012	01:50:20	375	4.6	15.73	103.4		
11/25/2012	01:52:45					End Tail Slurry	
11/25/2012	01:52:45	294	4.6	15.75	114.5		
11/25/2012	01:54:18	136	3.8	15.75	120.7		
11/25/2012	01:56:03					Reset Total, Vol = 32.58 bbl	
11/25/2012	01:56:03	5	0.1	15.86	126.9		
11/25/2012	01:56:05					Drop Top Plug	
11/25/2012	01:56:05	4	0.0	15.86	126.9		
11/25/2012	01:56:06					Start Displacement	
11/25/2012	01:56:06	4	0.0	15.87	126.9		
11/25/2012	01:59:18	31	1.9	15.87	127.1		
11/25/2012	02:04:18	108	5.0	8.51	146.0		
11/25/2012	02:09:18	288	6.5	8.40	176.8		
11/25/2012	02:14:18	326	3.4	8.39	204.8		
11/25/2012	02:19:18	1453	0.0	8.40	207.0		
11/25/2012	02:21:33					Bump Top Plug	
11/25/2012	02:21:33					End Displacement	
11/25/2012	02:21:33	1449	0.0	8.40	207.0		
11/25/2012	02:21:37					Check Floats	
11/25/2012	02:21:37	1426	0.0	8.40	207.0		

Well			Field		Job Start	Customer		Job Number	
Shideler Fee 6-3A			Mamm Creek		Nov/24/2012	Encana		CE6H-00011	
Date	Time 24-hr clock	Treating Pressure PSI	Flow Rate B/M	Density LB/G	Volume BBL	Message			
11/25/2012	02:22:08	670	0.0	8.40	207.0				
11/25/2012	02:22:10					1 BBL Back At Bleed-Off			
11/25/2012	02:22:10	587	0.0	8.40	207.0				
11/25/2012	02:24:18	-12	0.0	8.40	207.0				
11/25/2012	02:25:45					40 BBLs Of Cement Back To Surface			
11/25/2012	02:25:45	-12	0.0	8.40	207.2				

Post Job Summary

Average Pump Rates, bbl/min					Volume of Fluid Injected, bbl			
Slurry 4.8	N2	Mud 0.0	Maximum Rate 6.5	Total Slurry 207.0	Mud 0.0	Spacer 21.7	N2	
Treating Pressure Summary, psi					Breakdown Fluid			
Maximum 3086	Final -11	Average 411	Bump Plug to	Breakdown	Type	Volume	Density	
Avg. N2 Percent	Designed Slurry Volume		Displacement 80.1 bbl	Mix Water Temp	Cement Circulated to Surface? <input checked="" type="checkbox"/>	Volume		
					Washed Thru Perts <input type="checkbox"/>	To		
Customer or Authorized Representative Erasmus Parras			Schlumberger Supervisor ROGERS / FAIRBROOK			Circulation Lost <input type="checkbox"/>	Job Completed <input checked="" type="checkbox"/>	
						-	-	