

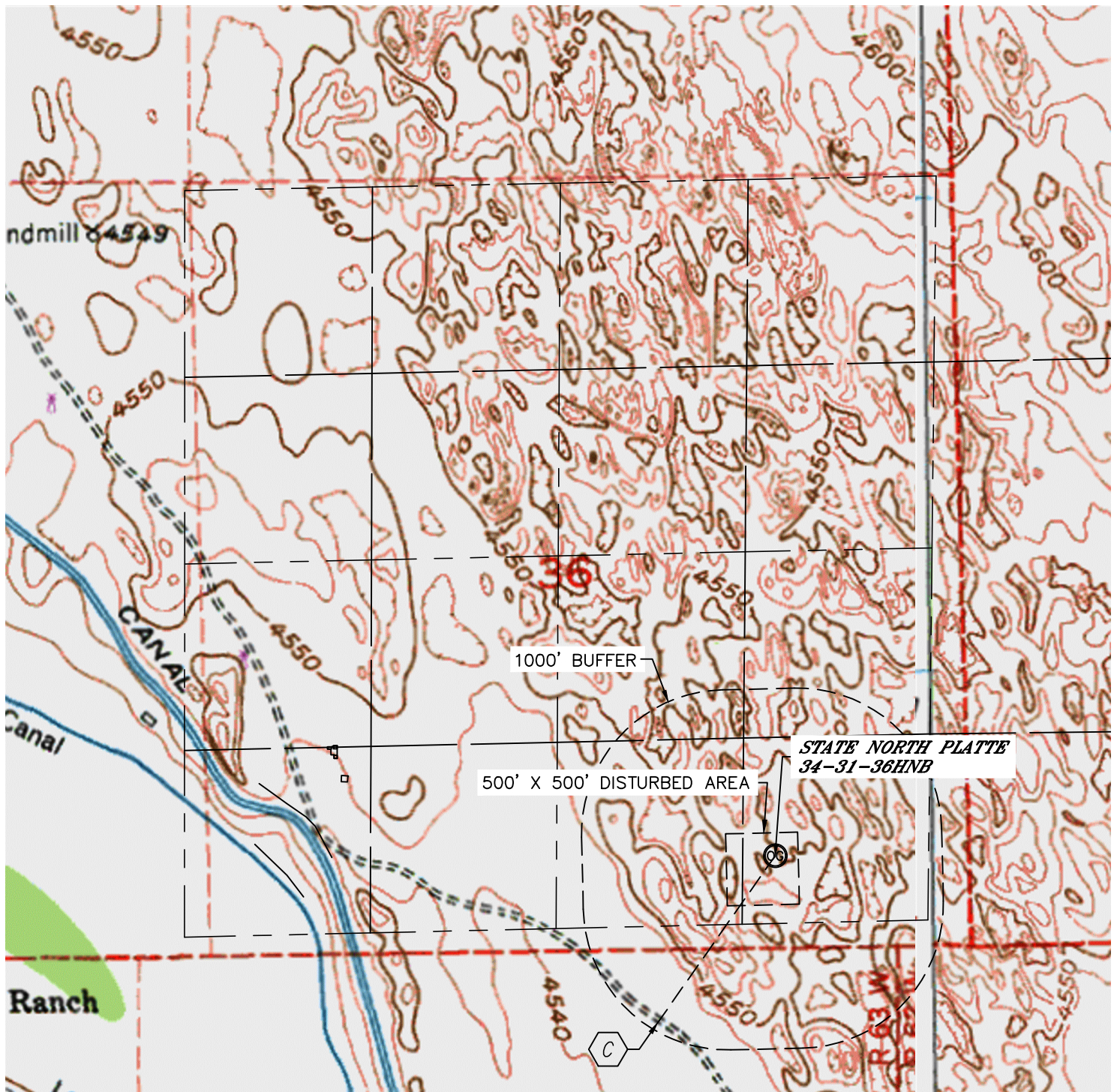


Lat40°, Inc. 1635 Foxtrail Drive, Suite 325 Loveland, CO 970-776-3321

HYDROLOGY MAP

STATE NORTH PLATTE T-36 PAD

SECTION: 36
TOWNSHIP: 5N
RANGE: 63W



LOW AREA 1420' SW



1"=1000'

DATE: 3/14/2013
PROJECT#: 2012021