

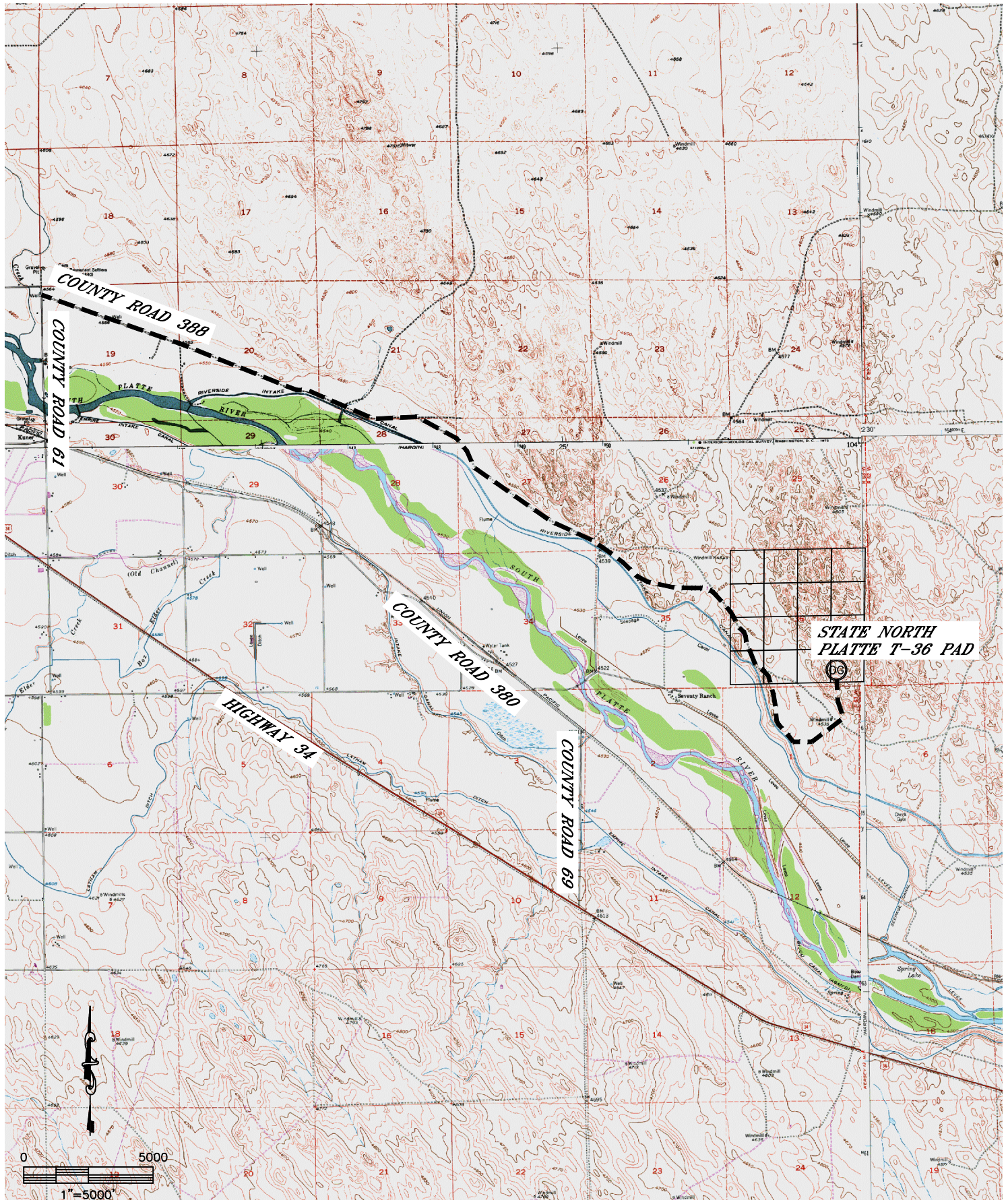


Lat40°, Inc. 1635 Foxtrail Drive, Suite 325 Loveland, CO 970-776-3321

ACCESS ROAD MAP

STATE NORTH PLATTE T-36 PAD

SECTION: 36
TOWNSHIP: 5N
RANGE: 63W



DATE: 3/14/2013
PROJECT#: 2012021