

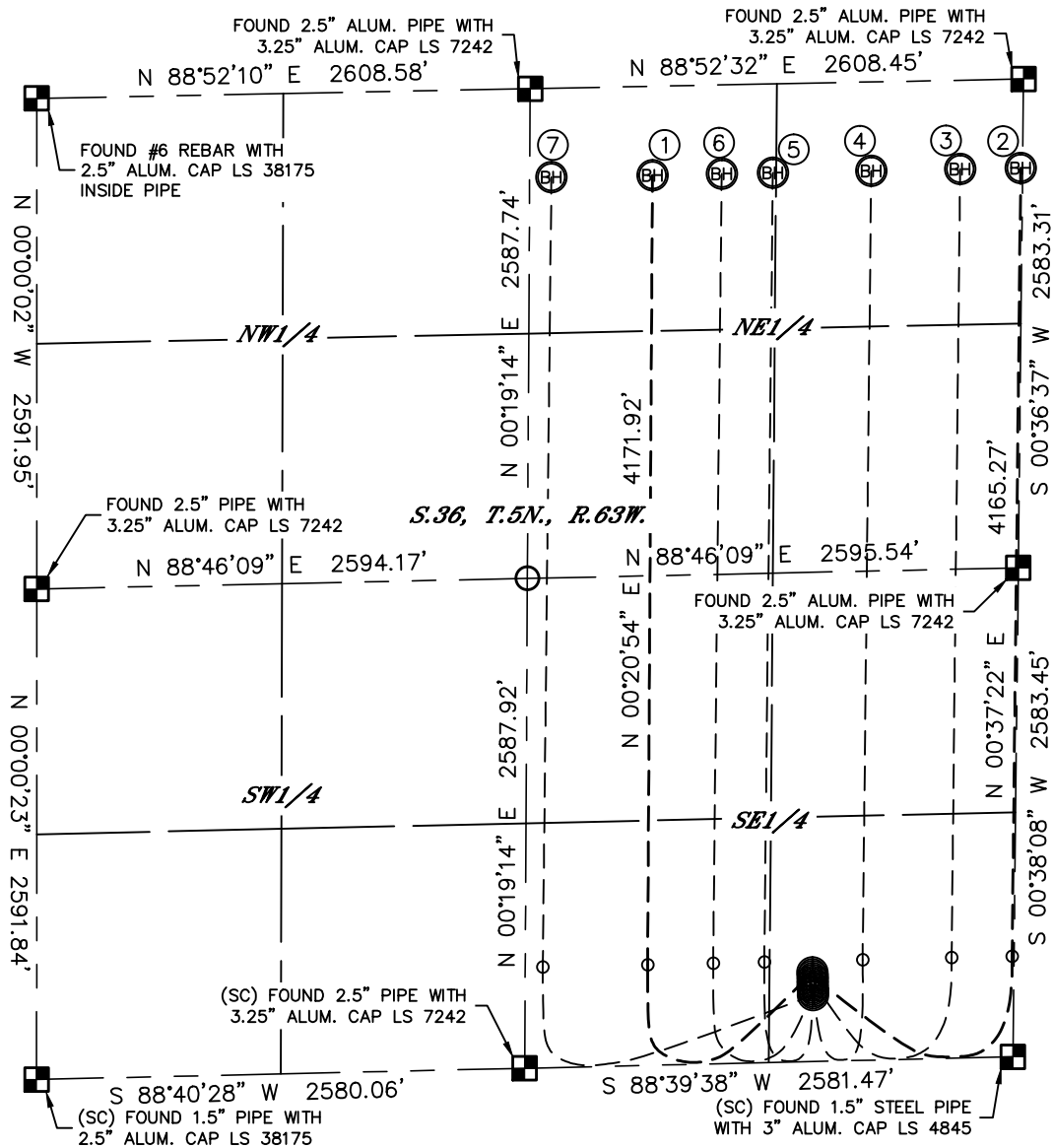


Lat40°, Inc. 1635 Foxtrail Drive, Suite 325 Loveland, CO 970-776-3321

MULTI-WELL PLAN

STATE NORTH PLATTE T-36 PAD
THIS MAP DOES NOT REPRESENT A BOUNDARY SURVEY

SECTION: 36
TOWNSHIP: 5N
RANGE: 63W



①
-SURFACE LOCATION-
STATE NORTH PLATTE
34-31-36HNB
470' FSL
1065' FEL
LAT-40.35036°N
LONG-104.37943°W

②
-SURFACE LOCATION-
STATE NORTH PLATTE
Y-U-36HNB
450' FSL
1065' FEL
LAT-40.35030°N
LONG-104.37943°W

③
-SURFACE LOCATION-
STATE NORTH PLATTE
A3-36
430' FSL
1064' FEL
LAT-40.35025°N
LONG-104.37943°W

④
-SURFACE LOCATION-
STATE NORTH PLATTE
A4-36
410' FSL
1063' FEL
LAT-40.35020°N
LONG-104.37943°W

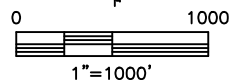
⑤
-SURFACE LOCATION-
STATE NORTH PLATTE
A5-36
390' FSL
1062' FEL
LAT-40.35014°N
LONG-104.37943°W

⑥
-SURFACE LOCATION-
STATE NORTH PLATTE
A6-36
370' FSL
1062' FEL
LAT-40.35009°N
LONG-104.37943°W

⑦
-SURFACE LOCATION-
STATE NORTH PLATTE
A7-36
350' FSL
1061' FEL
LAT-40.35003°N
LONG-104.37942°W

LEGEND

- = ALIQUOT MONUMENT AS DESCRIBED
○ = CALCULATED POSITION



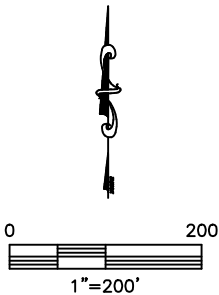
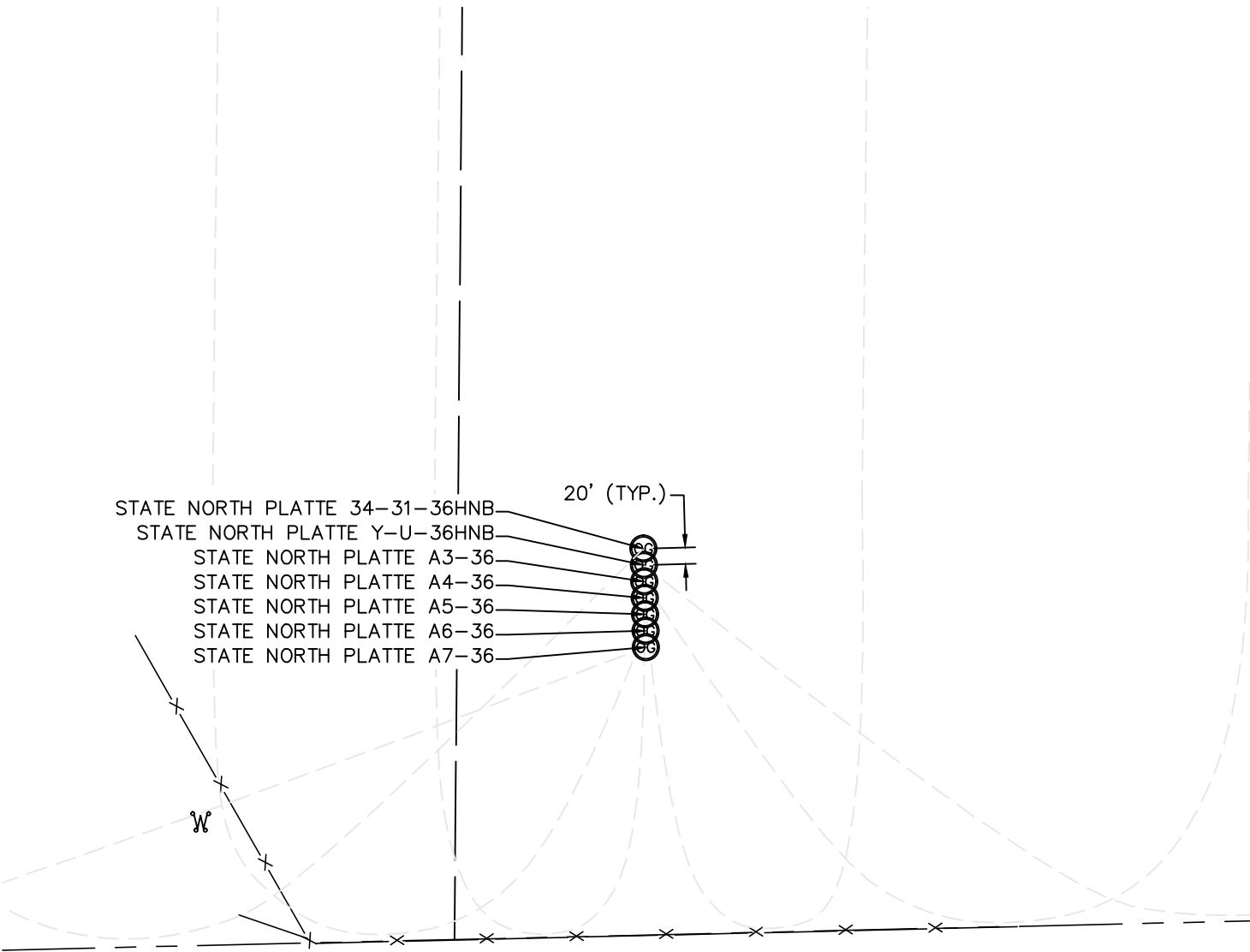
DATE: 3/14/2013
PROJECT#: 2012021



Lat40°, Inc. 1635 Foxtrail Drive, Suite 325 Loveland, CO 970-776-3321

MULTI-WELL PLAN
STATE NORTH PLATTE T-36 PAD

SECTION: 36
TOWNSHIP: 5N
RANGE: 63W



DATE: 3/14/2013
PROJECT#: 2012021