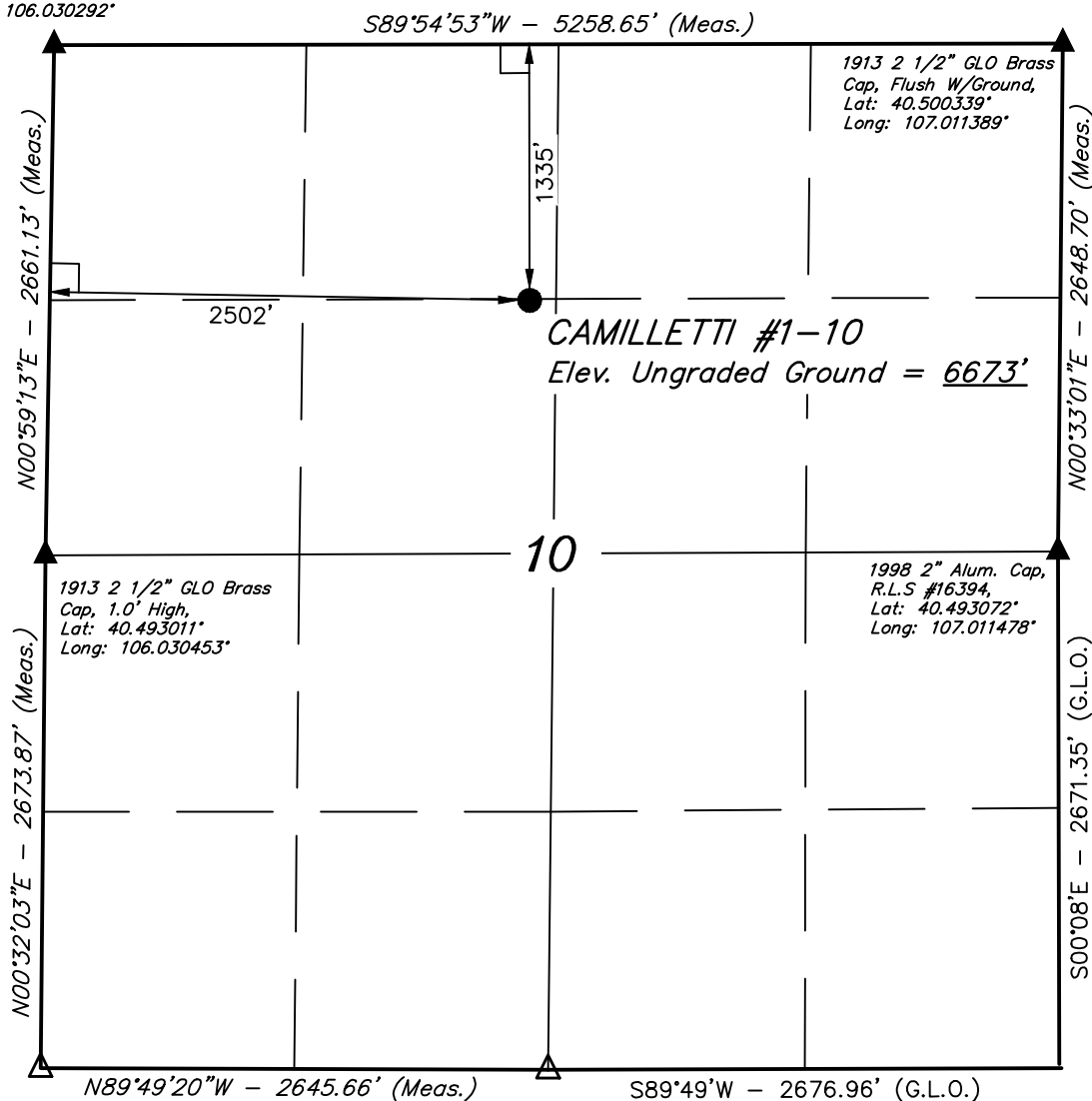


1913 2 1/2" GLO Brass
Cap, 0.9' High,
Fence Post
Lat: 40.500311°
Long: 106.030292°

T6N, R86W, 6th. P.M.



Re-established Sec, Cor
Using Reference Markers

Re-established Sec, Cor
Using Reference Markers

LEGEND:

- └─┘ = 90° SYMBOL
- = PROPOSED WELL HEAD.
- ▲ = SECTION CORNERS LOCATED.
- △ = SECTION CORNERS RE-ESTABLISHED.
(Not Set on Ground.)

PDOP = 1.5

NAD 83 (SURFACE LOCATION)	
LATITUDE	= 40°29'47.98" (40.496661)
LONGITUDE	= 107°01'16.97" (107.021381)
NAD 27 (SURFACE LOCATION)	
LATITUDE	= 40°29'48.07" (40.496686)
LONGITUDE	= 107°01'14.78" (107.020772)

SWEPI LP

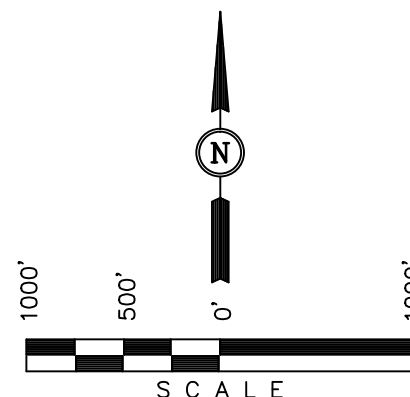
Well location, CAMILLETTI #1-10, located as shown in the SE 1/4 NW 1/4 of Section 10, T6N, R86W, 6th. P.M., Routt County, Colorado.

BASIS OF ELEVATION

BENCH MARK 6605 LOCATED IN THE NORTHWEST 1/4 OF SECTION 6, T5N, R85W, 6th P.M., TAKEN FROM THE COW CREEK QUADRANGLE, COLORADO, ROUTT COUNTY, 7.5 MINUTE QUAD. (TOPOGRAPHIC MAP) PUBLISHED BY THE UNITED STATES DEPARTMENT OF THE INTERIOR, GEOLOGICAL SURVEY. SAID ELEVATION IS MARKED AS BEING 6605 FEET.

BASIS OF BEARINGS

BASIS OF BEARINGS IS A G.P.S. OBSERVATION.



CERTIFICATE

THIS IS TO CERTIFY THAT THE ABOVE MAP WAS PREPARED FROM FIELD NOTES OF ACTUAL SURVEYS MADE BY ME OR UNDER MY SUPERVISION AND THAT THE SAME ARE TRUE AND CORRECT TO THE BEST OF MY KNOWLEDGE AND BELIEF.

REGISTERED LAND SURVEYOR
REGISTRATION NO. 17492
STATE OF COLORADO
05-16-13

UINTAH ENGINEERING & LAND SURVEYING
85 SOUTH 200 EAST - VERNAL, UTAH 84078
(435) 789-1017

SCALE 1" = 1000'	DATE SURVEYED: 05-07-13	DATE DRAWN: 05-16-13
PARTY G.M. T.B. M.D.	REFERENCES G.L.O. PLAT	
WEATHER WARM	FILE SWEPI LP	